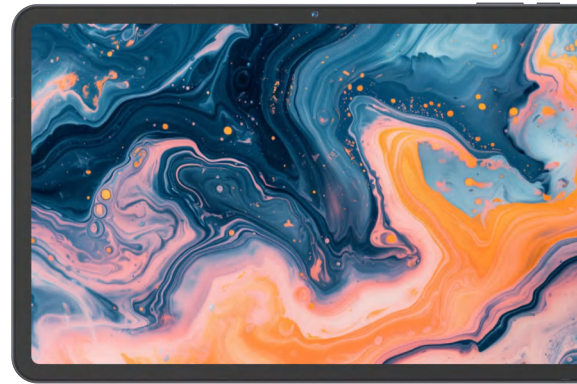


Android Tablet User Manual



Please read the instruction thoroughly before using this product and keep it for future reference.

English



- ① Headphone / Type-C
- ② Micro SD Slot
- ③ Front Camera
- ④ Power Button
- ⑤ Volume +
- ⑥ Volume -
- ⑦ Reset
- ⑧ Speakers

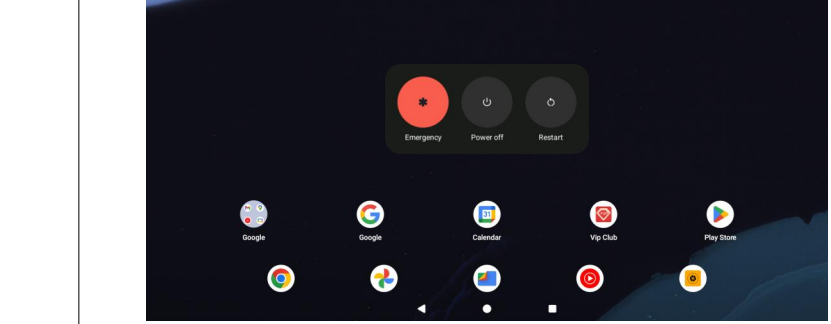
01

Getting Started

POWER ON/POWER OFF
When the tablet is on, you can turn off the screen to save battery power. Simply press the power button once to turn the screen off. Press the power button again to turn the screen back on.

Tip: Go to **Settings-Display-Lock display-Screen timeout** to set the time gap for initiating "sleep mode".

Power-off: Press and hold the Power button until the Device Options menu appears, it will show "Power off", "Restart", select "Power off" to turn off the tablet.



Reboot: If it's frozen, press and hold the power button for 7-8s to do a force reboot.

02

SLEEP MODE

When the tablet is on, you can turn off the screen to save battery power. Simply press the power button once to turn the screen off. Press the power button again to turn the screen back on.

Tip: Go to **Settings-Display-Lock display-Screen timeout** to set the time gap for initiating "sleep mode".

BATTERY

A RECHARGEABLE Li-ion battery is installed in the tablet. We suggest you drain the battery completely once a month if you only use your tablet occasionally. Do Not dispose of the tablet in a fire.

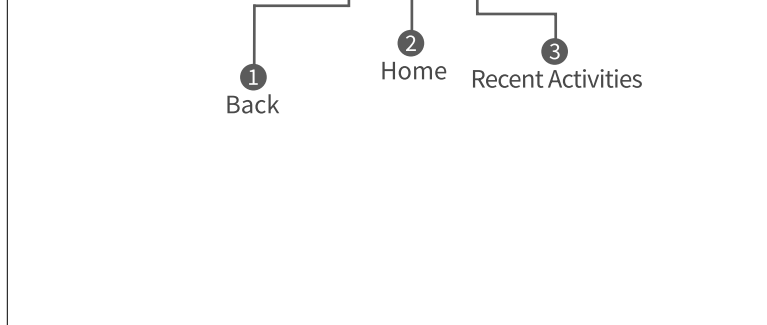
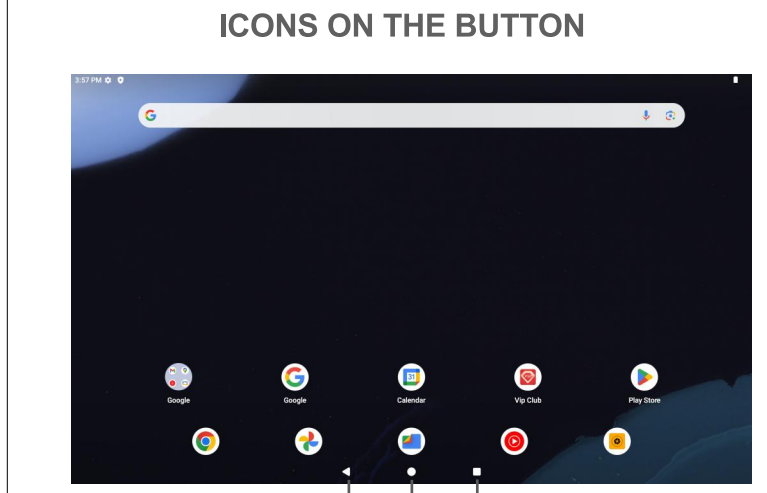
SCREENSHOT

Press and hold the power button and volume "+" at the same time to screenshot. The screenshot will be saved in the photos file.



03

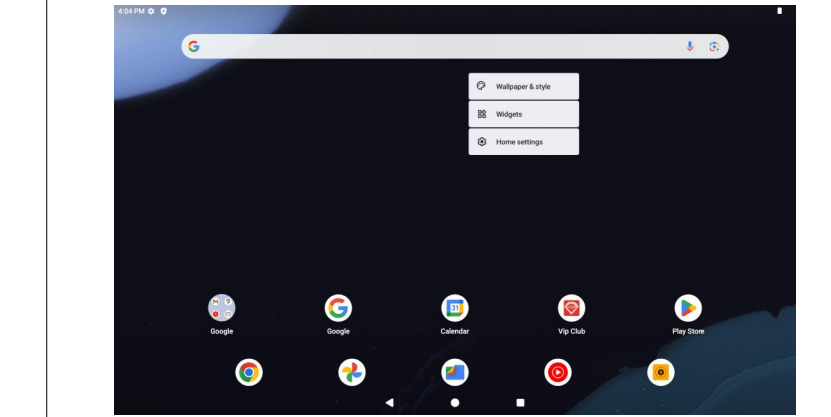
Home Screen ICONS ON THE BUTTON



04

HOME SETTINGS & WIDGETS & WALLPAPER

Tap and hold your finger in any blank space on the home screen, you will see a pop-up menu: "Home Settings", "Widgets" and "Wallpaper buttons" will be displayed.



-Select "Home Settings" you can enable/disable "Add icons to Home Screen" This is applicable to any new Apps installed from "Play Store". You can also change settings for "pull-down actions", "notification dots" home screen style" and more.

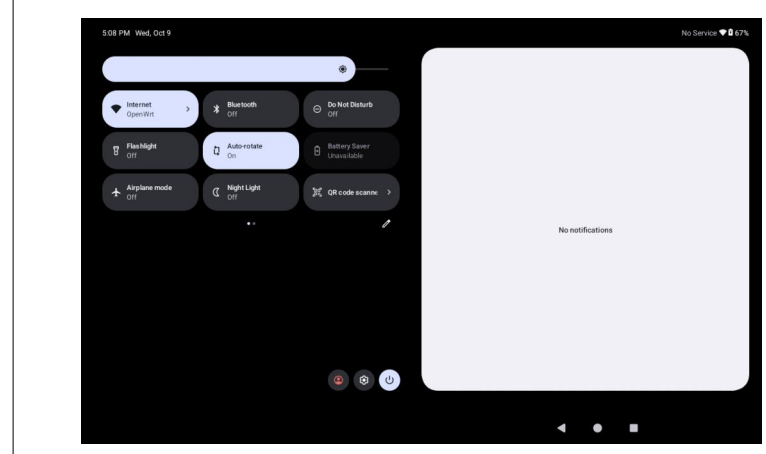
-Select "Widgets" touch and hold any application(e.g.clock), then slide and add it to the Home screen, and remove it by sliding to "X Remove" above.

Tip: Hold one icon and drag it on top of another icon to create a new

05

Basic Settings

Swipe down vertically from the top to enter quick notification menu.



WiFi: Tap to connect/disconnect to a wireless network.
Bluetooth: Enable/disable the Bluetooth of this tablet.

06

Flashlight

Turn on/off the Flashlight of this tablet.
Do not disturb: Block sound after enabling this function.

Alarm: Tap to set up alarm.
Airplane mode: Turn on/off all network connectivity.

Auto-rotate: Turn on/off the "Auto-rotate" of the screen.
Battery Saver: Tap to choose the power setting you prefer to save battery time.

Location: Turn on/off the location services for certain Apps.
Screen cast: Turn on/off cast screen to device.

Screen record: Tap to record screen action.
Mic access: Turn on/off microphone access for apps and services.

Nearby share: Tap to find nearby devices.

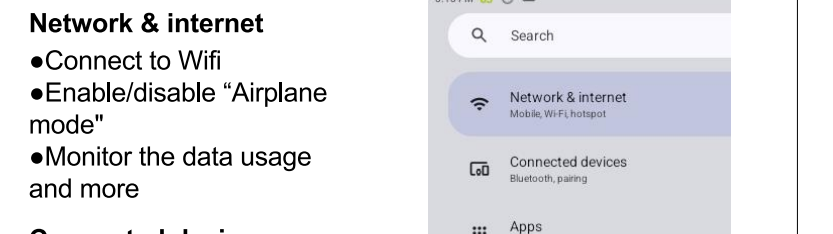
Tap the icon to change the options in the "Quick Settings". Long press each icon to enter the interface of the detailed setting pages.

Tap the icon to set up user setting.
Tap the icon to power off/restart tablet.

07

DETAILED SETTINGS

Swipe down from the top of the screen, tap icon to enter the detailed setting interface. Or tap the "Settings" App from the home screen to enter.



Network & internet
•Connect to Wifi
•Enable/disable "Airplane mode"
•Monitor the data usage and more

Connected devices
•Turn on/off Bluetooth
•Pair with Bluetooth devices and check the paired devices
•Check the received files from other devices via Bluetooth connection
•Add and check printers and more

Apps
•Check the Apps recently opened
•Check all the Apps on the tablet
•Set the App permissions

08

Storage

View and manage your storage space

Sound
•View the volumes for notifications, media and alarm

Display
•Adjust the screen brightness
•Adjust the font size and display size
•Set a screen saver
•Change the wall paper
•Adjust the time for entering the sleep mode
•Adjust Color and Contrast of display
•Set to check the notifications and other info and more

Wallpaper
•choose wallpaper from Live wallpapers photos or wallpapers

Accessibility
•For vision and hearing-impaired users, manage settings for Screen readers, Display, Interaction, controls and morewallpapers

09

Security&privacy

•App security,device lock,permissions

Location
•On/3 apps have access to location

Safety & emergency
•Emergency SOS, medical info, alerts

Memory Expansion

Passwords & accounts
•Saved passwords, autofill, synced accounts

Digital Wellbeing & parental controls

•Check your app usage based on Screen time. Notifications received, or Times opened from Dashboard

•Set a schedule for Wind Down and turn on the setting you prefer

10

Manage the related notification settings to reduce interruptions

•Set up Parental controls to help your kids balance their screen time and more

Google

•Set the preferences for Google-related services

DuraSpeed

•Helps boost foreground APP speed by restricting background Apps

System

•Set Language: Tap Language & input - Languages - Add a language to add your language

•Restore Factory Setting: Tap Advanced - Reset options-Erase all data(factory reset) to restore the factory setting (please note that If you perform a Hard Reset, all user applications and user data will be deleted. Please remember to back up any important data before performing a Hard Reset)

•Set date and time
•Turn on/off the Back up to Google Drive
•Check and update the tablet's system and more

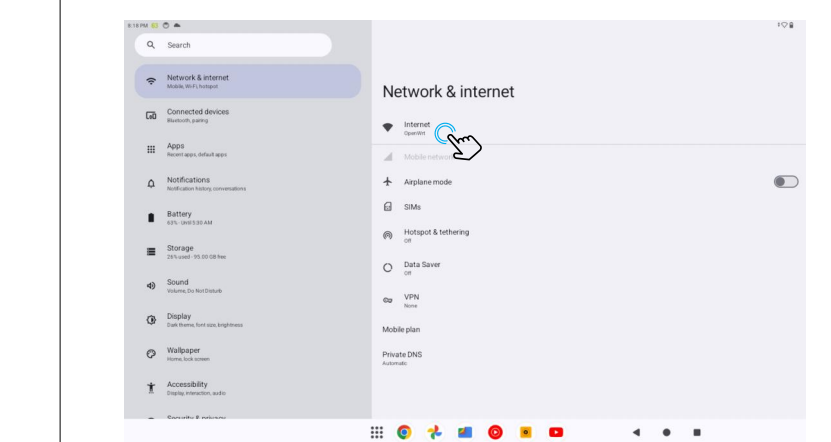
About tablet

•Basic information of device

11

Network Connection

Turn on the Wi-Fi
Tap "Network & Internet" and turn on the "Wifi" all available connections will be listed. Select your Wifi and input the correct password.



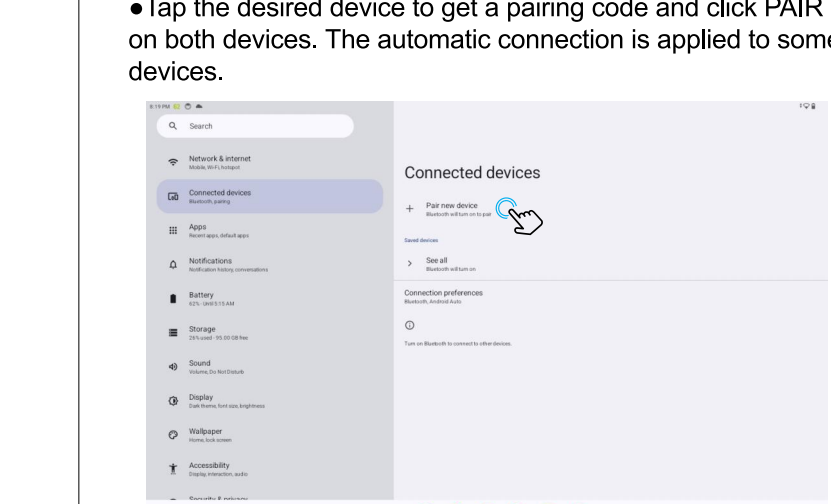
Internet Navigation

Please make sure the tablet is connected to a working Wifi network before navigating the internet. You may use Google Chrome or download other browsers on Google Play Store.

12

Bluetooth

Please turn on the Bluetooth on your tablet and your Bluetooth device first.
•Enter Settings - connected devices - Pair new device to enter the scanning interface. Devices available will be displayed after a few seconds.
•Tap the desired device to get a pairing code and click PAIR on both devices. The automatic connection is applied to some devices.



App Management

•Open Play Store on the home screen
•Log in your Google Account, search and download the Apps you need

13

Move the APP

Tap and hold on the App, and slide it onto the desired places
Remove the App from Home Screen
Tap and hold on the App, slide to X Remove above, to remove it from your Home Screen

Uninstall the App
Touch and hold the App, then slide to the X above, to uninstall the App

Optional Connections

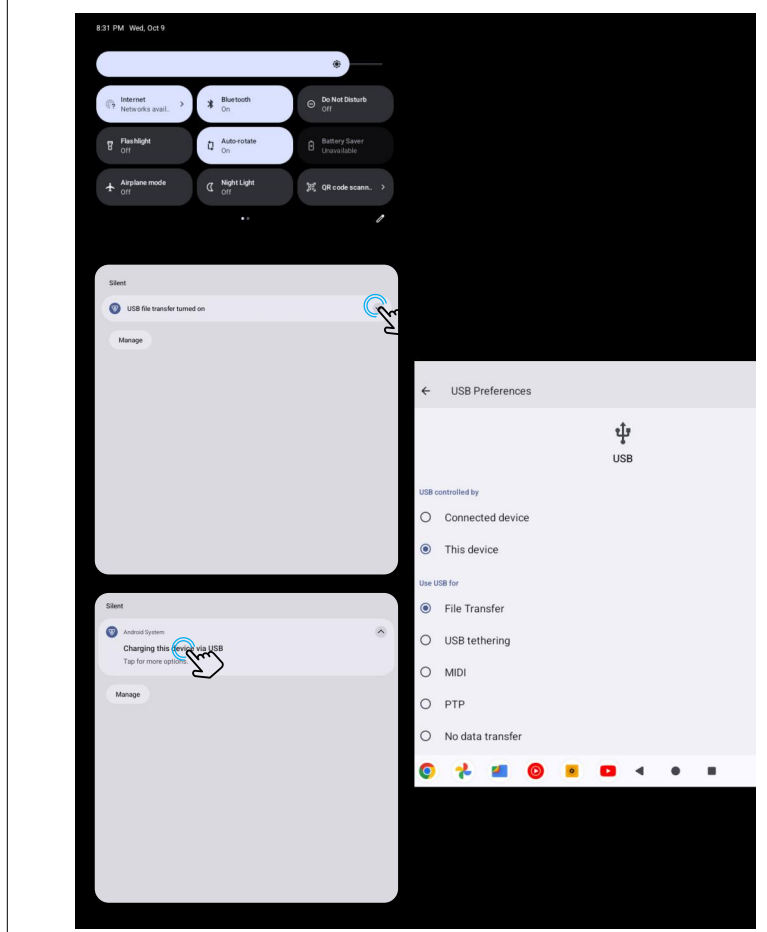
CONNECTING TO A COMPUTER

•Connect your tablet to the computer with a USB cable
•Go to your computer and find your tablet to transfer files between your tablet and computer

Tips:
Go to Quick Settings, tap Android system Charging this device to set USB preference.

- File Transfer: for file transfer
- USB tethering: share tablet's internet connection via USB
- MIDI: Play MIDI instruments on the tablet
- PTP: Transfer photos between the devices
- No data transfer: to charge tablet only

14



15

HOW TO INSTALL THE SD CARD

• Use the ejection pin to open the card slot on the right side of the tablet.

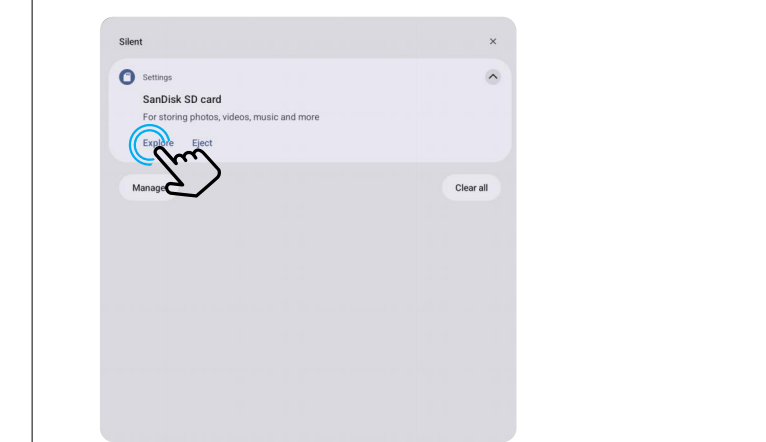
•Install the microSD card into the right side of the tablet slot and go to Quick Setting.

•Tap SET UP, Set the microSD card as portable storage by selecting Explore. Enter MicroSD Card storage to open with Files by Google or Files.



16

HOW WILL YOU USE THIS SD CARD?



17

Specification

Display	12 Inch
CPU	MTK8781 (2*A76 2.2Ghz+6*A55 2.0Ghz)
ROM	256GB
RAM	16(8+8)GB
Operation System	Android
Audio	Speakers*4
Ports	Type C/MicroSD Card Slot
WiFi	IEEE 802.11a/b/g/n/ac, Dual-band 2.4Ghz/5Ghz
Front Camera	8MP
Rear Camera	13MP
Power supply	9V/2A Type-C USB
Bluetooth	BT 5.0
GPS	Enable
Language	Support multi-language

Google, Android, Google Play, Google Chrome and other marks are trademarks of Google LLC.

18

Troubleshooting

Q1. The tablet doesn't power on.

- Reboot your tablet after charging for 30 minutes.
- Press the power button in case your device is in sleep mode.
- Press the power button for about 7-8s to reboot.
- Press the Reset button with a pin to reboot the tablet.

Q2. The tablet doesn't charge.

- Keep your device plugged in for 30 minutes if it was completely drained.
- Check and make sure the charger is properly plugged into the charging port.
- Try another compatible USB cable and adapter.

Q3. Error message during operation.

- Uninstall the application with an error message and download it to install again. You can also update certain applications with the error.
- Press the Reset button with a pin to reboot the tablet.

Q4. The tablet can't be detected by the computer.

- Try another USB cable.
- Connect your tablet to a different port on your PC.
- Instead of Charge only, choose Media device(MTP) Or Camera(PTP) when connecting the tablet to the computer.

19

Q5. Device cannot connect to Wifi.

- Make sure the Wifi on your tablet is ON.
- Make sure you input the correct password
- Restart the router.
- Make sure there is no filtering setting or device connection limit in your router setting.
- Forget the original Wi-Fi connection, reset the router, and connect again.

Q6. The storage space of the tablet is not enough.

- Delete any applications you don't use.
- Clean the caches in your device regularly.
- Install a microSD card to expand the storage.

Q7. The tablet comes with scratches on the screen.

- Check if the scratches are on the film, if yes, please remove the film.

Q8. The screen is unresponsive.

- Check if the screen is dusty or greasy. If yes, please gently wipe the screen with a cloth.

Q9. How to use your voice to search for a fact?

- Tap the microphone icon on Google Search bar, tell the tablet what you want to know and it will show you the search results.

20

This equipment has been tested and found to comply with the limits for a Class B digital device, pursuant to Part 15 of the FCC Rules.

These limits are designed to provide reasonable protection against harmful interference in a residential installation. This equipment generates uses and can radiate radio frequency energy and, if not installed and used in accordance with the instructions, may cause harmful interference to radio communications. However, there is no guarantee that interference will not occur in a particular installation. If this equipment does cause harmful interference to radio or television reception, which can be determined by turning the equipment off and on, the user is encouraged to try to correct the interference by one or more of the following measures:
-- Reorient or relocate the receiving antenna.
-- Increase the separation between the equipment and receiver.
-- Connect the equipment into an outlet on a circuit different from that to which the receiver is connected.
-- Consult the dealer or an experienced radio/TV technician for help.

This device complies with part 15 of the FCC Rules. Operation is subject to the following two conditions:
(1) This device may not cause harmful interference, and (2) this device must accept any interference received, including interference that may cause undesired operation.

Changes or modifications not expressly approved by the party responsible for compliance could void the user's authority to operate the equipment

*** RF warning for Portable device:**
The device has been evaluated to meet general RF exposure requirement. The device can be used in portable exposure condition without restriction.

11

