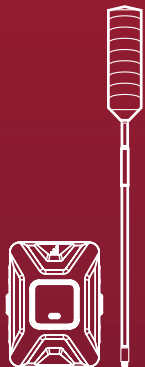

Install Guide



DRIVE 4G-X OTR

CellPhone
SignalBooster
USA



Get ready for a great signal.

Follow these easy steps and the Drive 4G-X OTR will be boosting your signal in no time. Drive 4G-X OTR technology - the solution for a strong, reliable cell signal.

For more information please refer to this package's User Manual, or find it online at:

<https://cellphonesignalbooster.us/weboost-drive-4g-x-otr-470210-truck-signal-booster-kit/>

PACKAGE CONTENTS



Drive 4G-X
Signal
Booster



4G-OTR
Antenna &
Mount



Slim Low
Profile
Antenna



Mounting
Bracket



DC Power
Supply

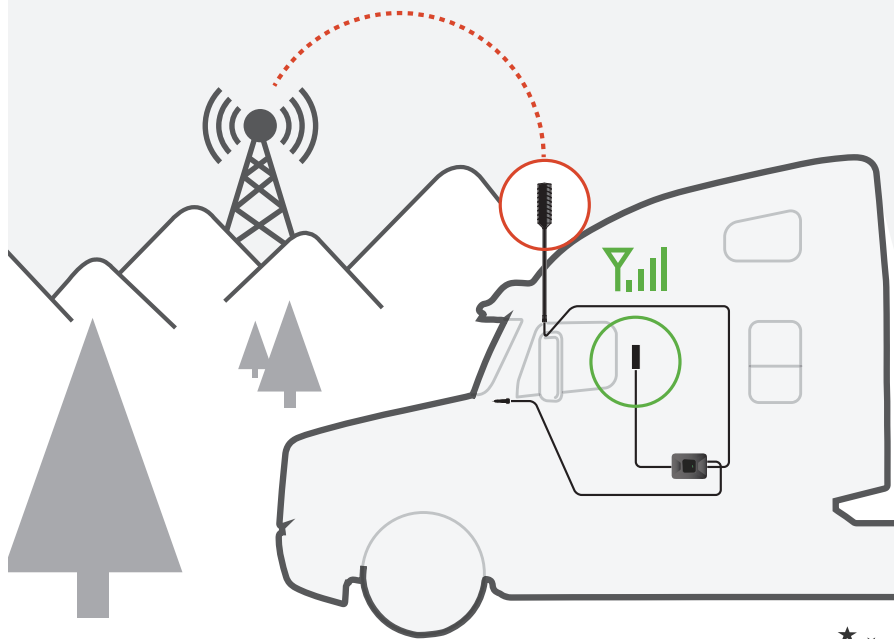
FCC ID: PWO460021 **IC:** 4726A-460021 **Model#** 460021 **Product#** U470010



<https://cellphonesignalbooster.us/weboost-drive-4g-x-otr-470210-truck-signal-booster-kit>

HOW DOES DRIVE 4G-X OTR WORK?

Drive 4G-X OTR receives a cell signal from the tower, amplifies it, and sends it over the cable to the antenna. The antenna broadcasts the amplified signal throughout the cab of the truck.

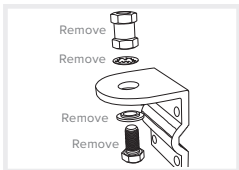


CellPhone
SignalBooster
US

<https://cellphonesignalbooster.us/weboost-drive-4g-x-otr-470210-truck-signal-booster-kit>

Quick Install Guide

Please refer to our **User Manual** for more options on how to properly install your booster.



Step 1

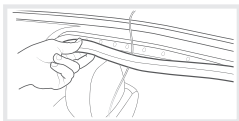
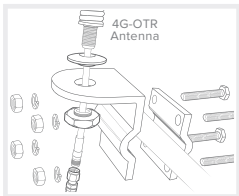
4G-OTR ANTENNA INSTALLATION

Select a location on one of the mirror rails to mount the 4G-OTR Antenna that is:

- At least 12 inches from any other antennas.
- Free of obstructions.
- At least 6 inches from any windows (including sunroofs).

Remove existing nut from mount as shown.

Mount antenna with fitted disc washer and nut provided in package. Add included thread lock on all threads.



Step 2

RUNNING ANTENNA CABLE

Run the Outside Antenna cable into the vehicle.

The cable is strong enough that it may be shut in most vehicle doors without damaging the cable.

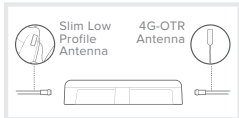
For a cleaner look, carefully pull down the door seal, run the cable under the seal, and push the seal back into place. This method reduces wear on the cable as the door opens and closes.



Step 3

INSIDE ANTENNA INSTALLATION

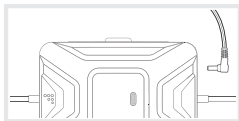
Identify a place on the side of the seat to mount the Slim Low Profile Antenna. The location should be at least 18 inches but no more than 36 inches from where the cellular device will be used. Peel off the backing of the Velcro® and attach to seat.



Step 4

CONNECT COAX CABLES TO DRIVE 4G-X

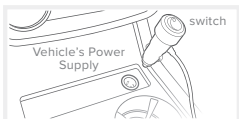
Select a location for the Drive 4G-X that is free from excessive heat, direct sunlight and moisture and that has proper ventilation. Good locations include underneath a seat or under the dashboard. Connect the cable from the 4G-OTR Antenna to the port labeled "Outside Antenna" on the Drive 4G-X and connect the cable from the Slim Low Profile Antenna to the port labeled "Inside Antenna" on the booster.



Step 5

CONNECT TO POWER SUPPLY

Connect the power supply cord to the end of the Drive 4G-X labeled "Power." NOTE: Do NOT connect the power to the Signal Booster until you have connected both the Inside and Outside Antennas.



Step 6

CONNECT TO POWER SUPPLY

Plug the power adapter into vehicle's 12V DC power supply. Power up your Drive 4G-X by flipping the switch on the back of the DC power adapter on. If your Drive 4G-X is working correctly, the lights will remain green.

NOTE: If light is not green on your weBoost booster, please refer to the full user manual online or contact customer support at 1-800-501-3153

Congratulations! Once your booster is running, please allow some time for your phone to adjust to your new signal. Read more about it here at

<https://cellphonesignalbooster.us/weboost-drive-4g-x-otr-470210-truck-signal-booster-kit/>

WHAT COLOR IS YOUR LIGHT?

weboost



GREEN

Booster is operating seamlessly

weboost



BLINKING RED

Booster has reduced power to eliminate oscillation

weboost



SOLID RED

Booster has shut down due to oscillation.

FOR ADDITIONAL INFORMATION PLEASE REFER TO OUR USER MANUAL



<https://cellphonesignalbooster.us/weboost-drive-4g-x-otr-470210-truck-signal-booster-kit/>