



Content

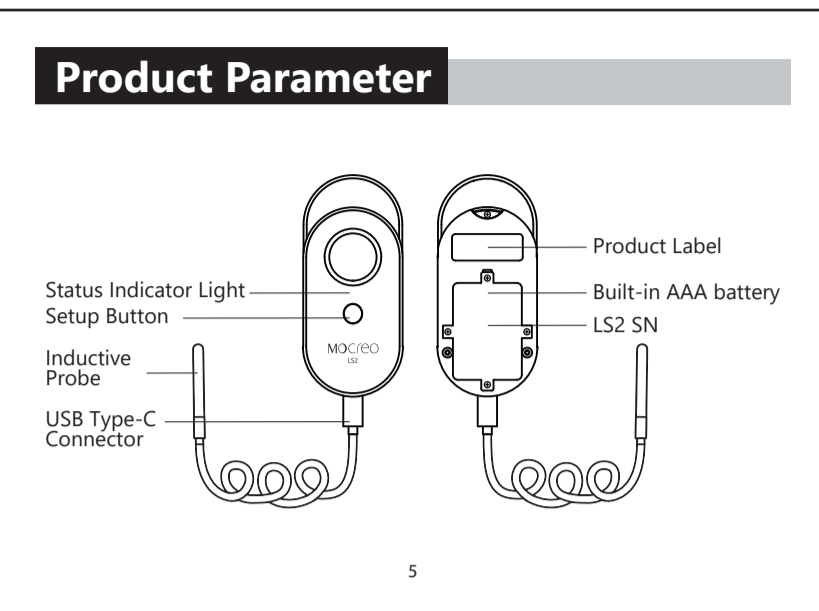
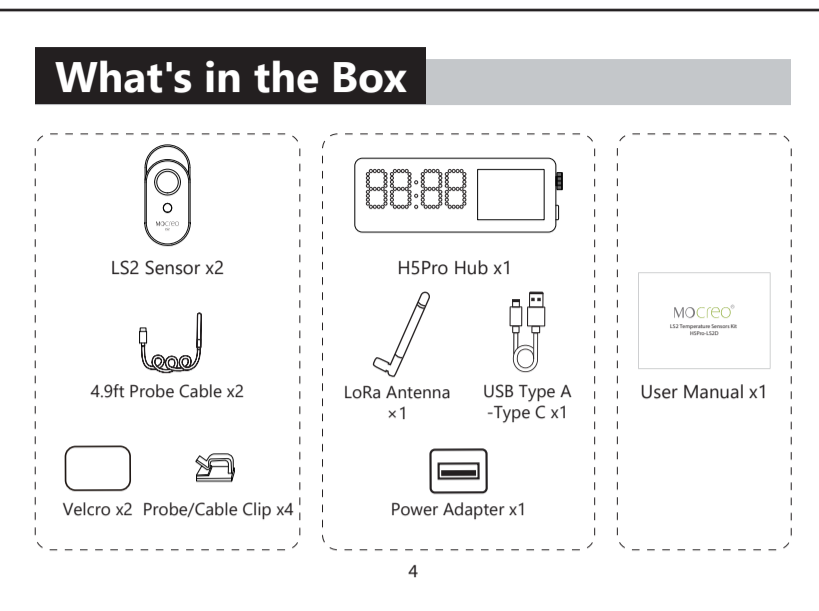
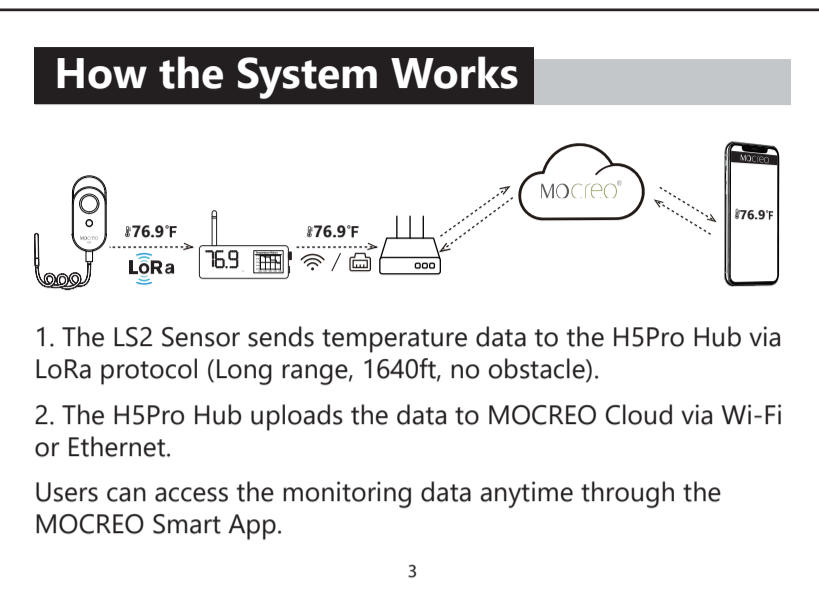
- Introduction 2
- How the System Works 3
- What's in the Box 4
- Product Parameter 5
- Mounting 11
- Setup 12
- Precautions and Disclaimer 17
- FCC Statement 19
- Warranty 22
- Customer Service 23

Introduction

The H5Pro-LS2D Kit is a long-range, reliable solution for remote temperature monitoring, featuring the H5Pro LoRa Hub and LS2 LoRa Temperature Sensor.

LS2 Sensor: Equipped with a high-precision, professional-grade sensor, the LS2 Sensor ensures accurate temperature readings. Its waterproof probe and low power consumption make it perfect for continuous use in challenging environments, such as refrigerator and freezers.

H5Pro Hub: The H5Pro Hub leverages LoRa technology to communicate with multiple sensors across expansive areas. Its 2-inch display provides real-time monitoring at a glance, making it the dashboard for managing sensors, checking historical data, alerts, etc.



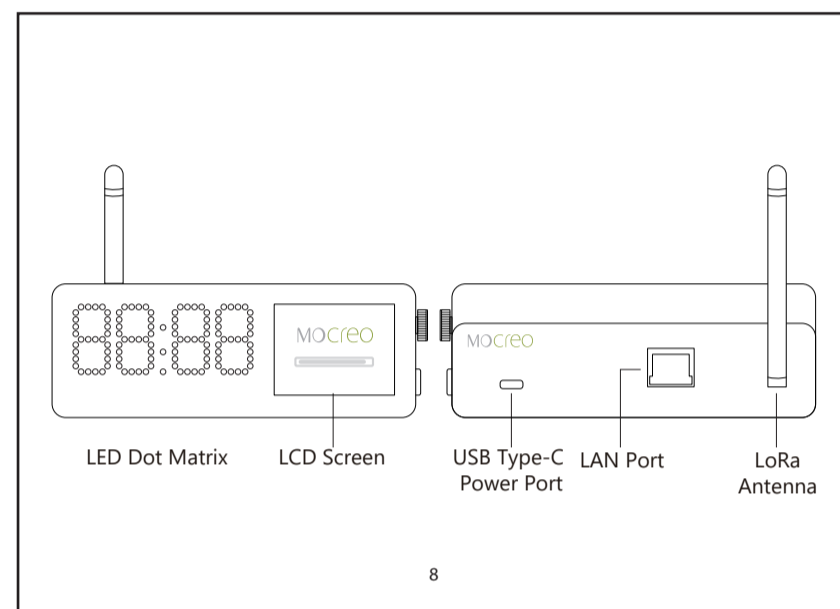
Specifications

Model	LS2
Wireless Connection	LoRa
Communication Range	1640 ft / 500 m (No obstacles)
Dimensions	4.20 x 2.22 x 0.79 in
Weight (Including probe)	3.7 oz
Cable Length	4.9 ft (1.5 m)
Cable Cross Section	0.16 x 0.05 in
Battery	AAA battery x 3 (Replaceable)
Probe Measuring Range	-40°~ 221°F(-40°~ 105°C)
Temperature Accuracy	±0.9°F (±0.5°C)

LS2 Sensor Button Functions

Function	Button Operation	Indicator Light Behavior
Enter Setup mode	Press and hold for 3s, then release	The blue light is flashing
Restore default settings and restart	Press and hold for more than 15s, then release	The red light briefly illuminates and then extinguishes
LS2 Sensor reports data (Battery level, signal strength, monitoring data)	Press the button once	The blue light flashes once

Note: "Restore default settings and restart" will reset the Sensor to factory settings. You will need to re-add the Sensor through the App. This action is generally not recommended unless necessary.



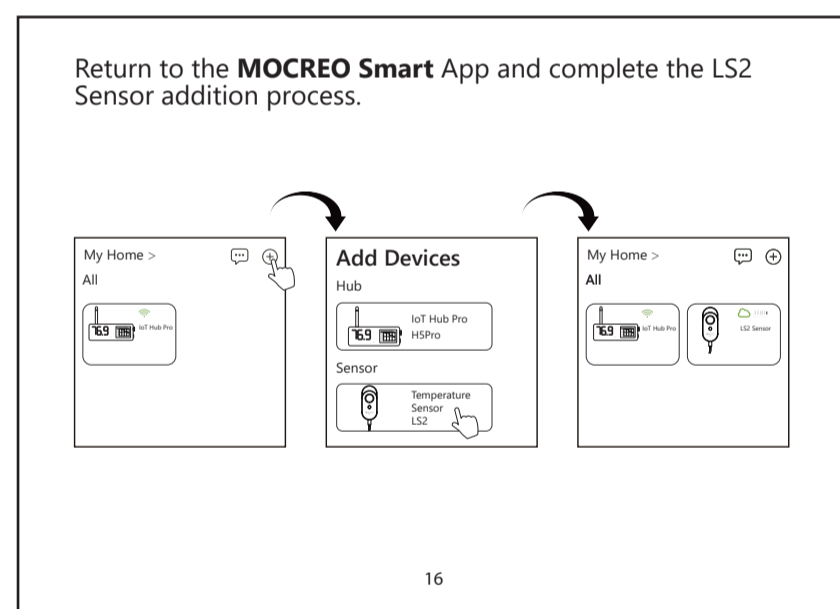
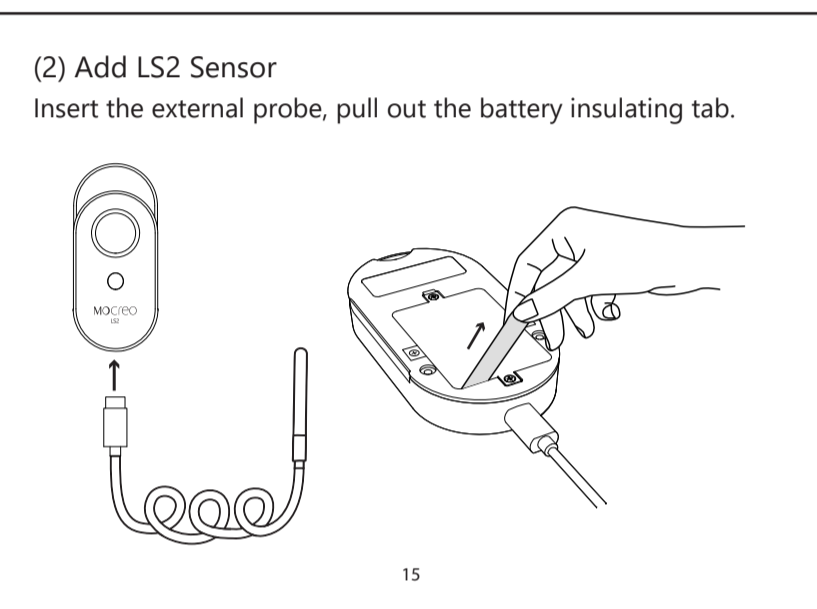
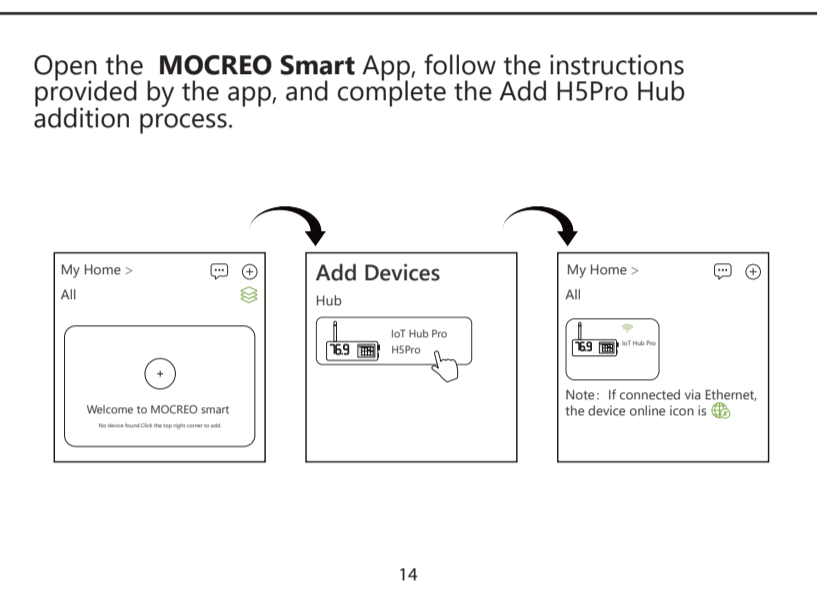
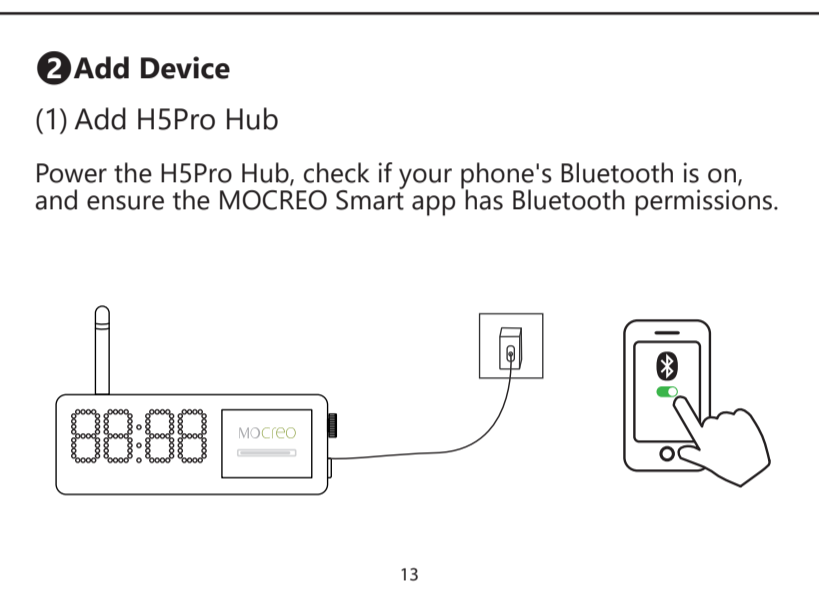
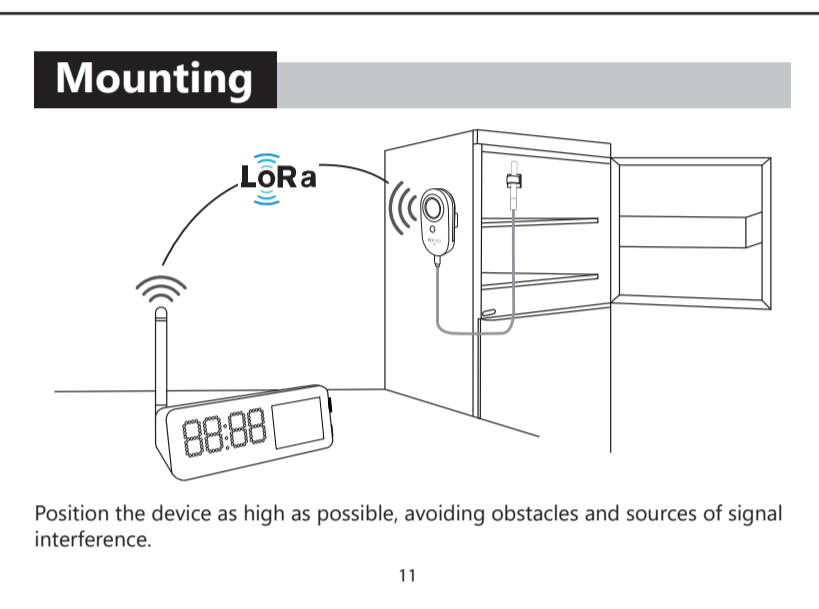
Button Functionality

Rotary Encoder: The rotary button allows moving the selection box up and down the screen, and pressing the button confirms the selection.

Side Button: Return to the previous interface.

Specifications

Model	H5Pro	
Button	Physical Button x2	Rotary Encoder x1, Side Button x1
Display	LCD Display (W x H)	2-inch, 320 x 240 IPS display, non touch
	LED Dot Matrix	7-segment 4-digit clock display
Network	Wi-Fi	2.4GHz
	LoRa	915MHz
	Ethernet	10Mbps/100Mbps
	BLE	BLE 5.0
Dimensions (L x W x H)	5.04 x 3.08 x 3.77 in (Include antenna)	
Weight	4.1 oz	
Power	DC 5V/1A	



Precautions and Disclaimer

Precautions for Use

To ensure the normal use of the product, please pay attention to the following situations:

- Do not expose the Device to high temperatures, humidity, or dusty environments.
- Do not place the Device near flammable materials.
- Do not put heavy objects on the Device or use it as a support.
- Children should not use the Device without adult supervision.

Disclaimer

The contents about how to use the product and the App guidance are only for reference; please refer to the actual situation for specific applications. If there is something different from the instructions during using the product, please contact MOCREO Support for updates.

This product is for detecting and monitoring only. MOCREO is not responsible for any property damage or other consequences of the use of this product.

FCC Statement

FCC ID (LS2 Sensor): 2BFZL-LS2
FCC ID (H5Pro Hub): 2BFZL-H5LR

This device complies with part 15 of the FCC Rules. Operation is subject to the following two conditions:

- This device may not cause harmful interference.
- This device must accept any interference received, including interference that may cause undesired operation.

Warning: Changes or modifications not expressly approved by the party responsible for compliance could void the user's authority to operate the equipment.

Note: This equipment has been tested and found to comply with the limits for a Class B digital device, according to part 15 of the FCC Rules.

These limits are designed to provide reasonable protection against harmful interference in a residential installation. This equipment generates uses and can radiate radio frequency energy and, if not installed and used in accordance with the instructions, may cause harmful interference to radio communications.

However, there is no guarantee that interference will not occur in a particular installation. If this equipment does cause harmful interference to radio or television reception, which can be determined by turning the equipment off and on, the user is encouraged to try to correct the interference by one or more of the following measures:

- Increase the separation between the equipment and the receiver.
- Connect the equipment to an outlet on a circuit different from that to which the receiver is connected.
- Consult the dealer or an experienced radio/TV technician for help.

Warranty

MOCREO products enjoy a 12-month limited warranty (starting from the date when the customer receives the product), which applies only to hardware components of the device that are not subject to accident, misuse, neglect, fire, or other external causes, alterations, or repair.

Customer Service

<https://doc.mocreo.com/>

+1 (530) 988-8608

help@mocreo.com

YouTube MOCREO Sensor

Search [MOCREO] on YouTube to watch the setup video tutorials.

User Guide Manual

