

Installation Instructions

Wireless Motion Sensor LED UltraBright Spotlight

MB380 / MB390

Thank you for purchasing the Mr Beams® Wireless UltraBright Spotlight. We are committed to eliminating darkness using the latest in Light-Emitting Diodes (LEDs). LEDs are the most efficient and durable light sources available. We are certain that your light will contribute to a safer environment and provide light where you need it at a very reasonable cost.

What is included per light:

- 1 Wireless UltraBright Spotlight
- 3 Screws
- 3 Anchors

What you need to install:

- 1 Small Screwdriver
- 4 D-Cell Alkaline Batteries

Spotlight Features:

Motion/Light Sensor: Light instantly turns on when it detects motion from up to 25 feet away. The light sensor conserves battery life by preventing the light from activating in daylight.

Auto Shut-off: Light shuts off automatically after 20 seconds if no motion is detected.

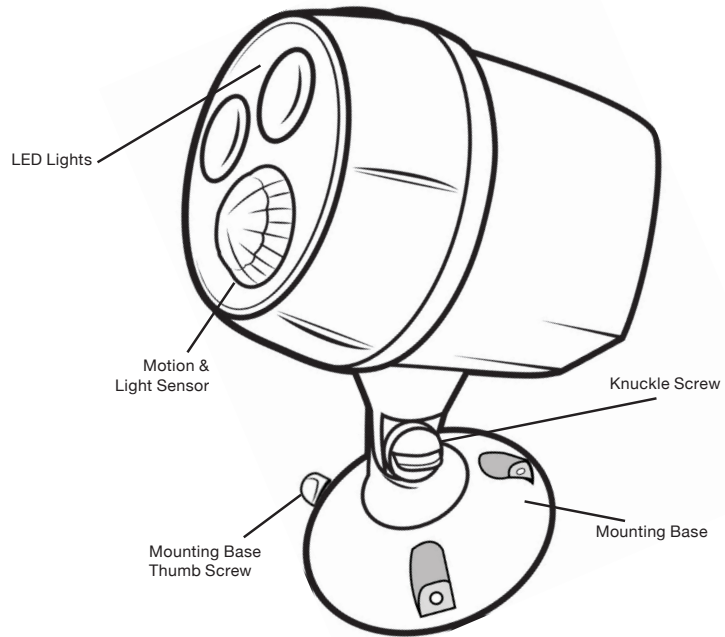
Fully Adjustable: Motion Sensor Spotlight can be rotated 360° as well as up and down.

Bright LEDs: 400 Lumens covers up to 400 sq ft.

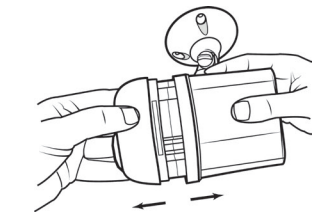
Durable, Weather Resistant: Tight seals and UV resistant material allow the light to work in all weather conditions.

Tips:

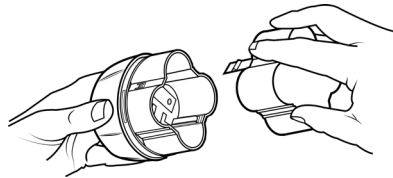
- Use only new alkaline D-Cell batteries with 1.5V rating.
- Do not mix old and new batteries. If batteries are not new, it may cause the light to malfunction.
- Install batteries with polarity in correct position.
- Light may activate when batteries are inserted. Simply take light into a dark room. Allow batteries to settle, then test activation.
- **If your light will not turn off, it means that it is time to replace the batteries.**



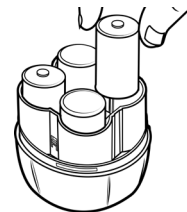
NOTE: Light sensor only allows light to activate in darkness. We recommend you test in a dark room or closet.



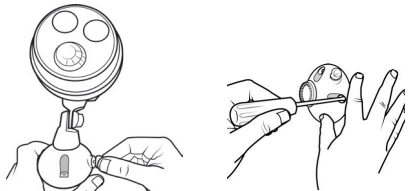
1. Remove front cover of Spotlight by rotating counter-clockwise as shown above. Pull face out from cup to reveal battery holder.



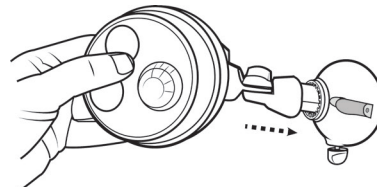
2. Separate two parts by squeezing tabs and pulling apart.



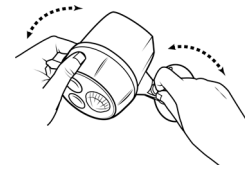
3. Insert 4 D-Cell batteries into Spotlight. Attach holder by aligning the grooves on the side and match white arrows, snapping both tabs in the holder.



4. Remove mounting base by turning thumb screw counter-clockwise. Pull mounting base off stem of light.



6. Insert spotlight back into mounting base pointed in the desired direction. Tighten mounting base thumb screw.



7. To pivot Spotlight up and down, loosen knuckle screw in the joint of the Spotlight stem and adjust Spotlight head to proper direction. Tighten knuckle screw.

Battery Caution:

- 1) Do not mix old and new batteries
- 2) Do not mix Alkaline, Standard (Carbon-Zinc) or Rechargeable (Nickel Cadmium) or (Nickel Metal Hydride) batteries
- 3) Do not dispose of batteries in fire
- 4) Batteries should be recycled or disposed of as per state and local guidelines

MR BEAMS®
Surprisingly Bright Light Anywhere
www.mrbeams.com



* Visit our website to view installation video.
* 1 year limited warranty. Visit site for details.

600 Beta Drive, Mayfield Village, Unit 100, Mayfield, OH 44143
877.298.9082