

Vacuum cleaner

User manual

SC21K51**** Series

- Before operating this unit, please read the instructions carefully.
- For indoor use only.



SAMSUNG

Contents

PREPARATION

Safety information	3
Safety information	3
Important safety instructions	4

INSTALLATION

Name of the parts	10
Accessories	11

OPERATIONS

Using the vacuum cleaner	12
Using the body	12
Using the handle control	12
Using the brushes	13

MAINTENANCE

Cleaning and maintaining	14
When to empty the dust bin	14
Cleaning the dust bin	14
Cleaning the dust filter	15
Cleaning the outlet filter	15
Cleaning the brush	16
Cleaning the pipe	16
Cleaning the hose	16
Storing the vacuum cleaner	16

APPENDICES

Notes and cautions	17
In use	17
Cleaning and maintenance	18
Troubleshooting	19

Safety information

Safety information

WARNING

- Before operating the appliance, please read this manual thoroughly and retain it for your reference.

WARNING

- Because these following operating instructions cover various models, the characteristics of your vacuum cleaner may differ slightly from those described in this manual.

Caution/Warning symbols used

WARNING

Indicates that a danger of death or serious injury exists.

CAUTION

Indicates that a risk of personal injury or material damage exists.

Other symbols used

NOTE

Indicates that the following text contains additional important information.

Important safety instructions

When using an electrical appliance, basic precautions should be observed, including the following:

WARNING

This vacuum cleaner is designed for household use only.

Do not use this vacuum cleaner to clean building waste and debris.

Regularly keep the filters in clean conditions to prevent of collecting fine dust in them. Replace if the filter is deformed.

Do not use this vacuum cleaner with any of the filters removed.

Always clean the dust bin & filters after vacuuming carpet cleaners or fresheners, powders and fine dust.

Failure to meet these requirements could cause damage to the internal parts and void your warranty.

General

- Read all instructions carefully. Before switching on, make sure that the voltage of your electricity supply is the same as that indicated on the rating plate on the bottom of the cleaner.
- **WARNING** : Do not use the vacuum cleaner when rug or floor is wet.
- Close supervision is necessary when any appliance is used by or near children. Do not allow the vacuum cleaner to be used as a toy. Do not allow the vacuum cleaner to run unattended at any time. Use the vacuum cleaner only for its intended use as described in these instructions.
- Do not use the vacuum cleaner without a dust bin.
- Empty the dust bin before it is full in order to maintain the best efficiency.
- Do not use the vacuum cleaner to pick up matches, live ashes or cigarette butts. Keep the vacuum cleaner away from stoves and other heat sources. Heat can deform and discolour the plastic parts of the unit.

-
- Avoid picking up hard, sharp objects with the vacuum cleaner as they may damage the cleaner parts.
 - Do not stand on the hose assembly. Do not put weight on the hose.
 - Do not block the suction or the exhaust port.
 - Switch the vacuum cleaner off on the body of the machine before unplugging from the electrical outlet. Disconnect the plug from the electrical outlet before emptying the dust bin. To avoid damage, please remove the plug by grasping the plug itself, not by pulling on the cord.
 - This appliance can be used by children aged from 8 years and above and persons with reduced physical, sensory or mental capabilities or lack of experience and knowledge if they have been given supervision or instruction concerning use of the appliance in a safe way and understand the hazards involved. Children shall not play with the appliance. Cleaning and user maintenance shall not be made by children without supervision.
 - Children should be supervised to ensure that they do not play with the appliance.
 - The plug must be removed from the socket outlet before cleaning or maintaining the appliance.
 - The use of an extension cord is not recommended.
 - If your vacuum cleaner is not operating correctly, switch off the power supply and consult an authorized service agent.
 - If the supply cord is damaged, it must be replaced by the manufacturer or its service agent or a similarly qualified person in order to avoid a hazard.
 - Don't carry the vacuum cleaner by holding the hose. Use the handle on the vacuum cleaner set.
 - Unplug the cleaner when not in use. Turn off the power switch before unplugging.

-
- Do not use to suck up water.
 - Do not immerse in water for cleaning.
 - The hose should be checked regularly and must not be used if damaged.
 - Please contact the manufacturer or service agent for a replacement.

Power related

- Please prevent any risk of electric shock or fire.
 - Do not damage the power cord.
 - Do not pull the power cord too hard or touch the power plug with wet hands.
 - Do not use a power source other than the national rated voltage and also do not use a multi outlet to supply power to number of devices at the same time.
 - Do not leave the power cord carelessly on the floor.
 - Do not use a damaged power plug, power cord or loose power outlet.
 - Turn off the power before connecting or disconnecting the power plug to the power outlet and make sure your fingers don't come in contact with the pin of the power plug.
 - Do not disassemble or modify the vacuum cleaner. When power cord is damaged, contact the manufacturer or service agent to get it replaced by certified repairman.
 - Clean dust or any foreign matters on the pin and contact part of the power plug.
- If there's any gas leak or when using combustible sprays such as a dust remover, do not touch the power outlet and open the windows to ventilate the room.
 - There is a risk of explosion or fire.

In use

- Do not use this product outdoors since it's designed for household use only.
 - There is a risk of malfunction or damage.
 - * Outdoor cleaning : A stone, Cement
 - * A billiard room : Powder of a chalk
 - * An aseptic room of a hospital
- Do not use the vacuum cleaner to suck up liquids(such as water), blades, pins or embers.
 - There is a risk of malfunction or damage.
- Be sure children do not touch the vacuum cleaner when you use it.
 - The children may get burn if the body is overheated.
- Do not mount or make any physical impacts on the body.
 - It may result in injury or damage.
- Use the carrying handle for lifting or carrying the vacuum cleaner.

Cleaning and maintenance

- Do not lift or carry the vacuum cleaner putting a brush in the groove for storage.
- Use a dry cloth or towel to clean the body and make sure to unplug the vacuum cleaner before cleaning. Do not spray water directly or use volatile materials(such as benzen, thinner or alcohol) or combustible sprays(such as a dust remover) for cleaning.
 - If water or other liquid gets into the product and cause malfunction, turn off the vacuum cleaner, unplug the power plug and then consult a service agent.

- Do not use alkaline or industrial detergents, air fresheners or (acetic) acids to clean the washable parts of the vacuum cleaner. (Refer to the following table.)
 - It may cause damage, deformation or discoloration of the plastic parts.

The washable parts		Dust bin of the body, Dust filter, Sponge filter,
Available detergent	Neutral detergent	Kitchen cleaner
Unavailable detergent	Alkaline detergent	Bleach, Mold cleaner, etc.
	Acid detergent	Paraffin oil, Emulsifier, etc.
	Industrial detergent	NV-I, PB-I, Opti, Alcohol, Acetone, Benzene, Thinner, etc.
	Air freshener	Air freshener(Spray)
	Oil	Animal or vegetable oil
	Etc.	Edible acetic acid, Vinegar, Glacial acetic acid, etc.

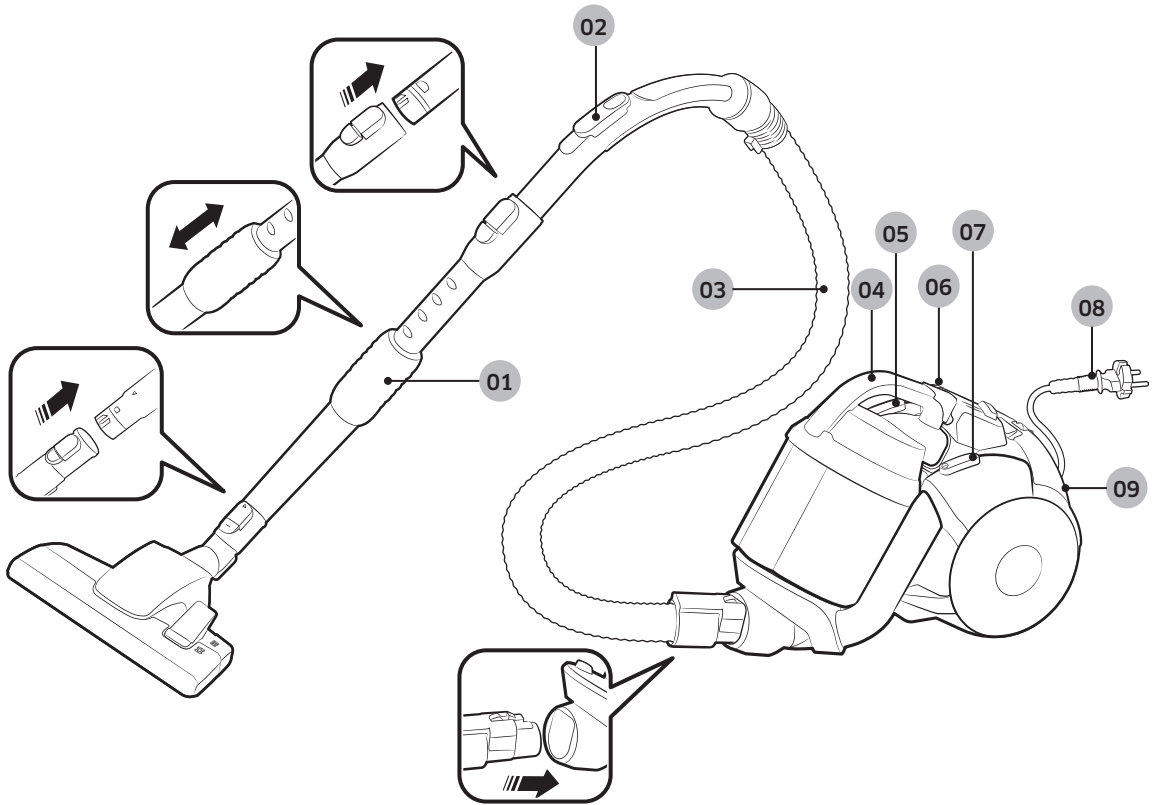
⚠ CAUTION**In use**

- Do not use the pipe for anything other than its intended purpose.
 - It may result in injury or damage.
- When you lift up the handle of dust bin while using the vacuum cleaner, safety device will be activated and there might be changes in operating noise.
 - Operating noise may change when you hold the handle of the dust bin while using the vacuum cleaner, but the circular tube on bottom of the dust bin prevents dust from spilling out.
- Do not pull the power cord beyond the yellow mark and hold the power cord with one hand when rewinding it
 - If you try to pull it beyond the yellow mark, power cord can be damaged and if you don't hold the power cord while rewinding, it may lose control and cause injury or damage to people or objects around it.
- If any abnormal sounds, smells or smoke come from the vacuum cleaner, immediately unplug the power plug and contact a service agent.
 - here is a risk of fire or electric shock.
- Do not use the vacuum cleaner in any places near heating appliances (such as stove), combustible spray or flammable materials.
 - It may cause fire or deformation of the product.

Cleaning and maintenance

- Unplug the vacuum cleaner if you do not use it for a long time.
 - It may cause electric shock or fire.

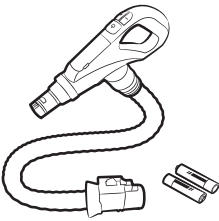
Name of the parts



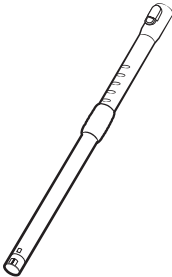
- 01** Pipe
- 02** Handle control
- 03** Hose
- 04** Dust bin
- 05** Cord rewind button

- 06** Filter light
- 07** Power button
- 08** Power cord
- 09** Outlet filter

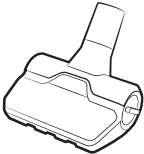
Accessories



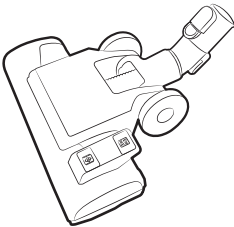
RF hose



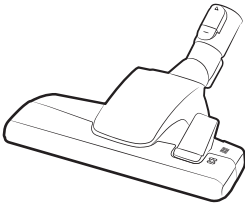
Pipe



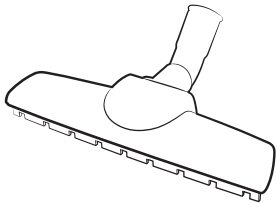
Anti-Tangle tool (Option)



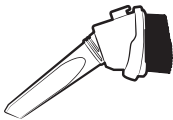
2-step brush
(SC07K51**** SERIES)



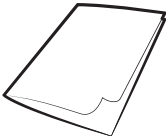
2-step brush
(SC21K51**** SERIES)



Parquet master (Option)



3-in-1 accessory



User manual

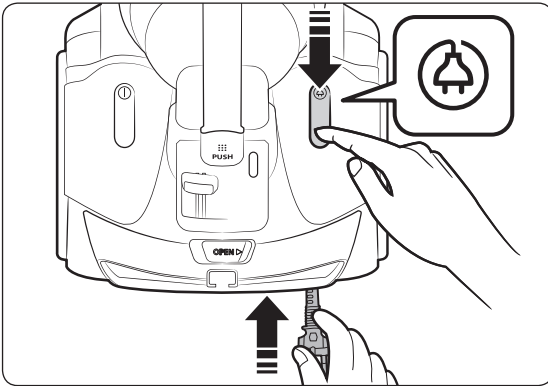
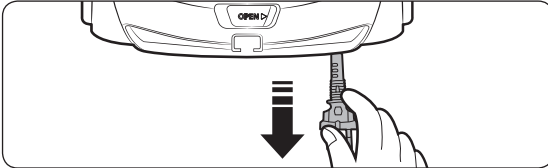
INSTALLATION



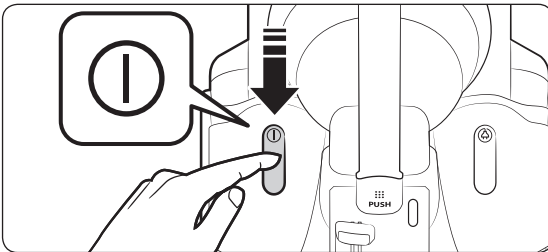
Using the vacuum cleaner

Using the body

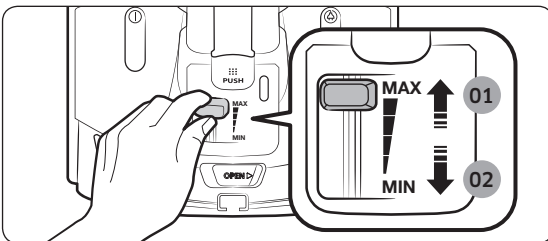
Power cord



On/Off

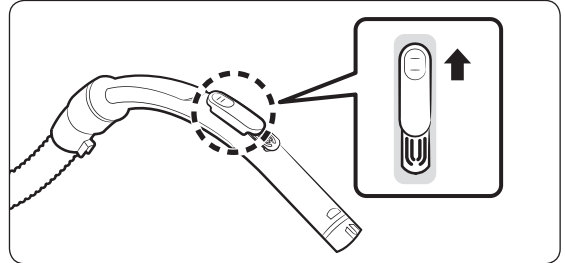


Suction



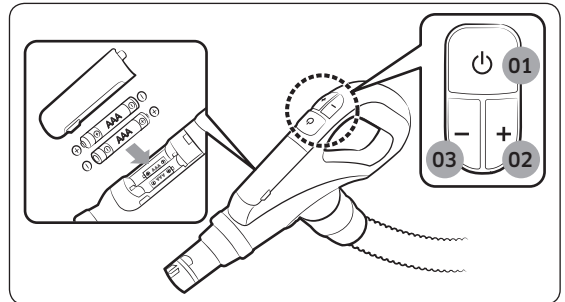
- 01 Higher power
- 02 Lower power

Using the handle control



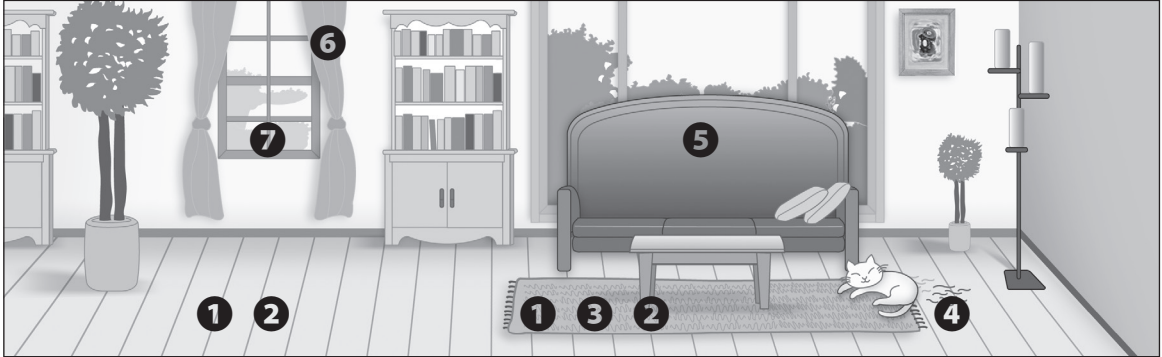
NOTE

- For cleaning fabrics, push the button downward to reduce suction.

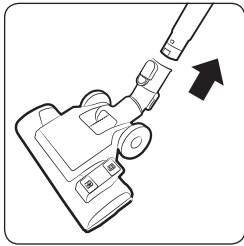


- 01 Power ON/OFF
- 02 Increasing suction power
- 03 Decreasing suction power

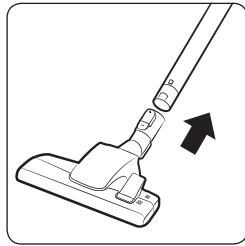
Using the brushes



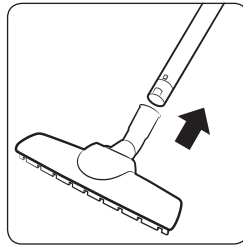
Where to use the brushes



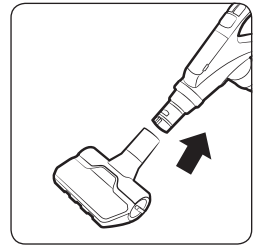
❶ 2-step brush



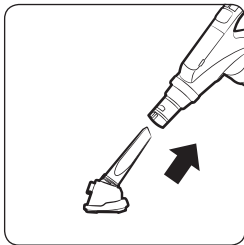
❷ 2-step brush



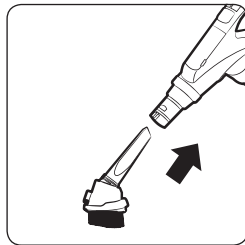
❸ Parquet master



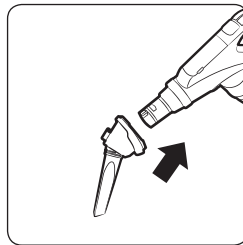
❹ Anti-Tangle tool



❺ upholstery tool



❻ Dusting brush



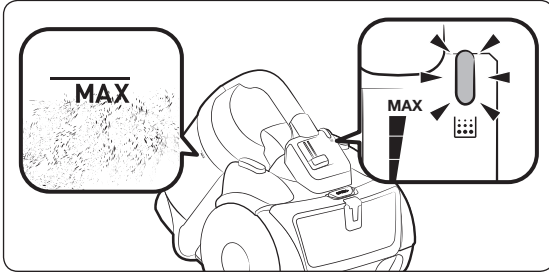
❼ Crevice tool

- *  Floor
-  Carpet

Cleaning and maintaining

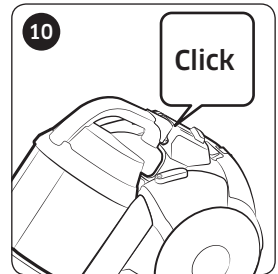
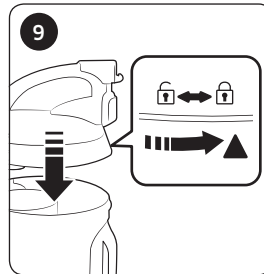
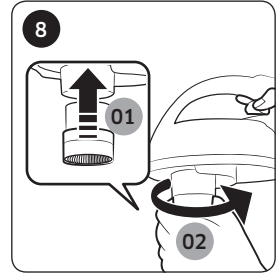
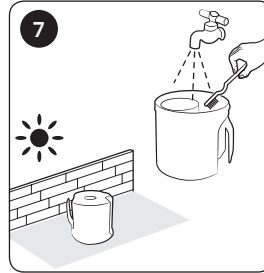
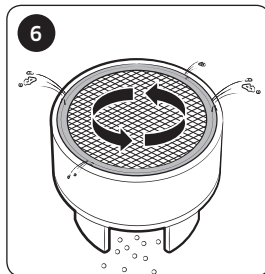
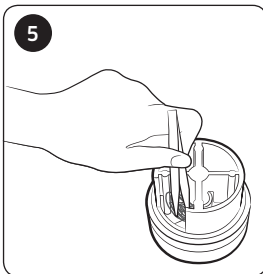
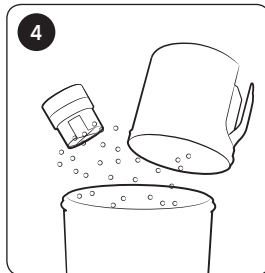
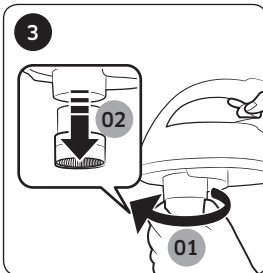
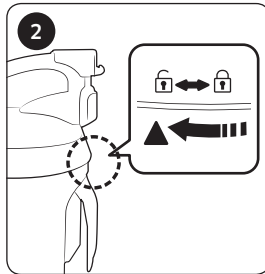
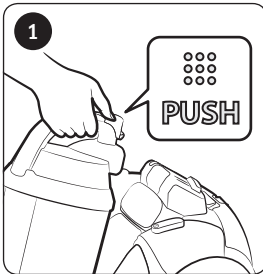
You must unplug the vacuum cleaner before cleaning it.

When to empty the dust bin



Cleaning the dust bin

Clean the dust bin if there's too much dust in the dust bin.



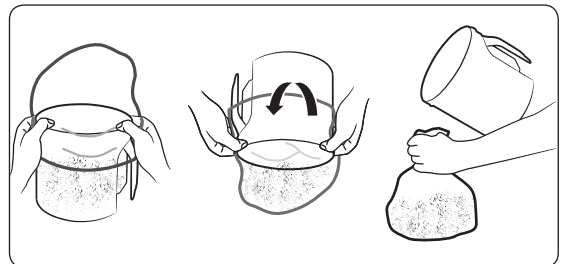
* Anti-Tangle Turbine(Cyclone Force)

- Based on internal testing. Tested at the turbine fan using a mix of hair, pet hair on Floor.

⚠ CAUTION

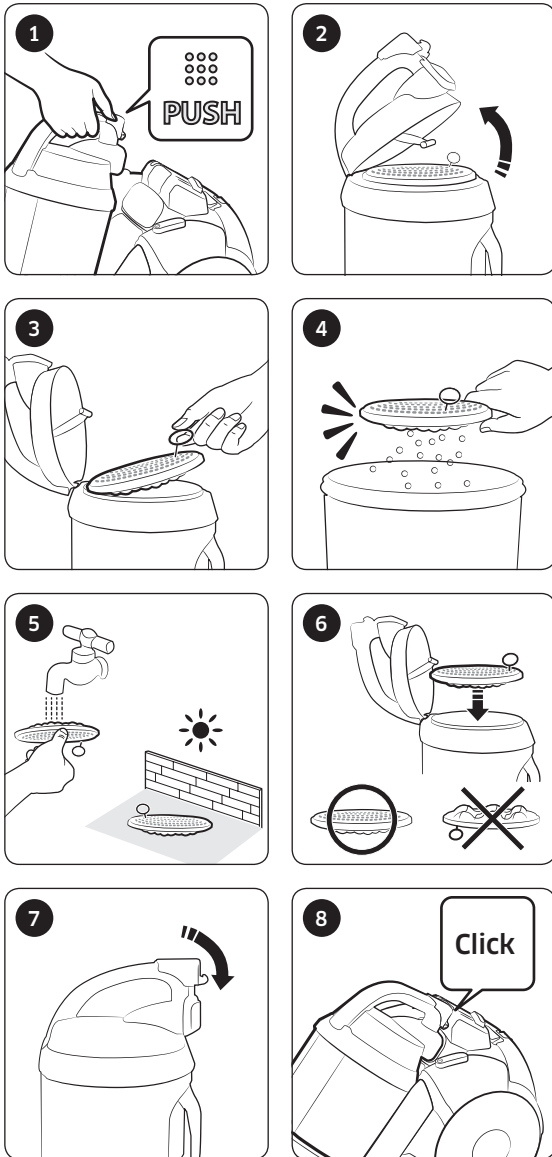
- If tool is required for cleaning, please be careful not to hurt the mesh.

How to empty the dust bin easily

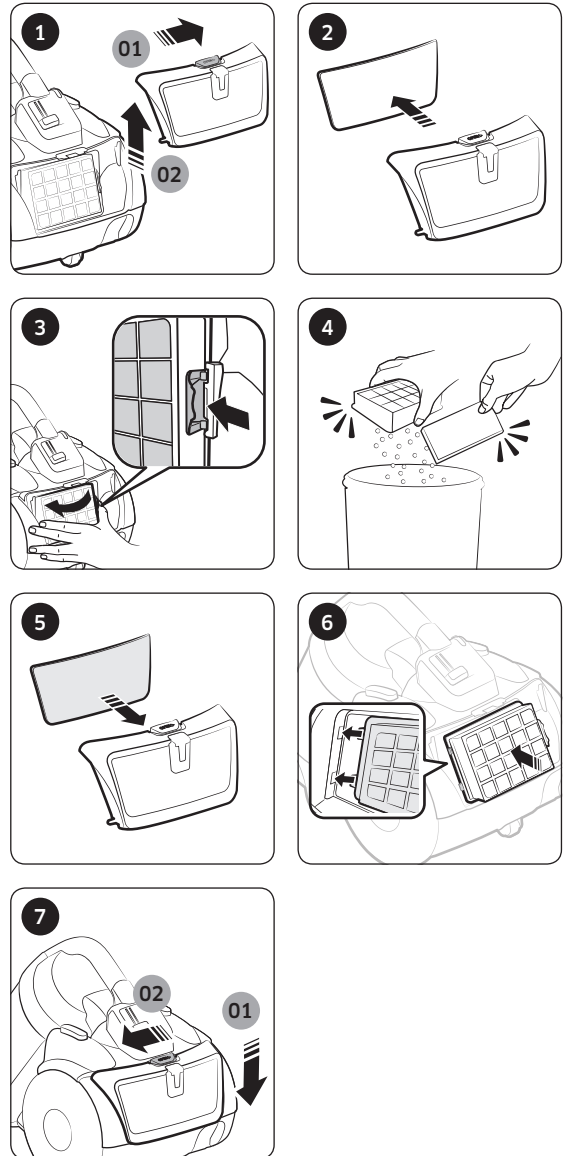


Cleaning the dust filter

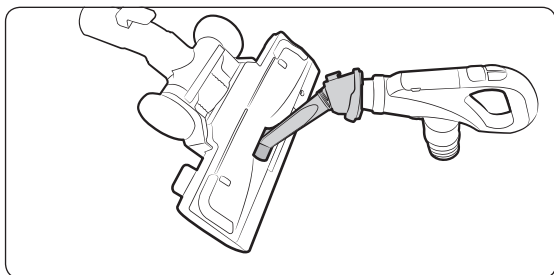
If the filter check indicator turns red with the inlet floating 10 cm above flat floor, clean the dust filter.



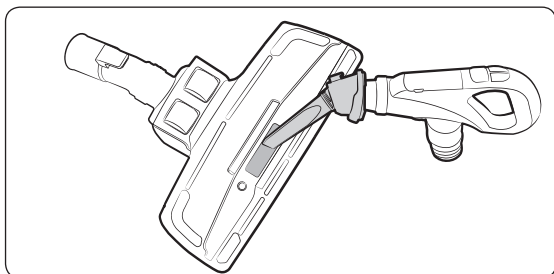
Cleaning the outlet filter



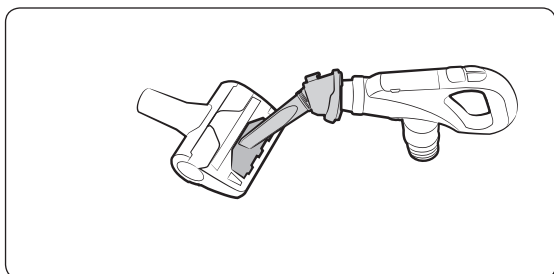
Cleaning the brush



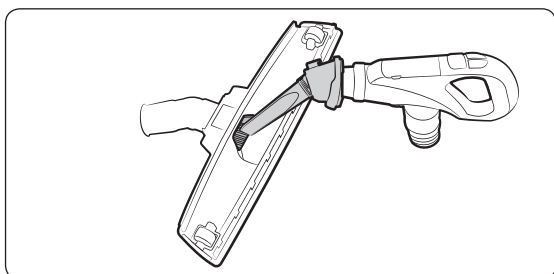
2-step brush



2-step brush

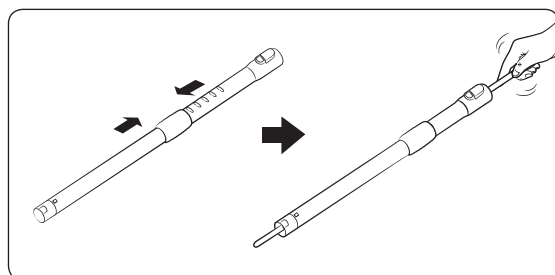


Anti-Tangle tool

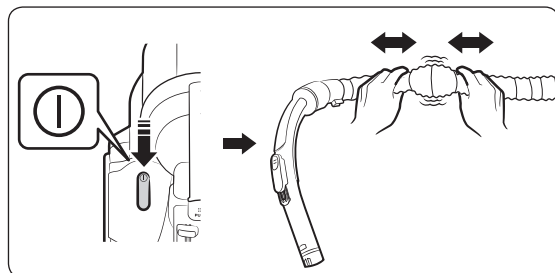


Parquet master

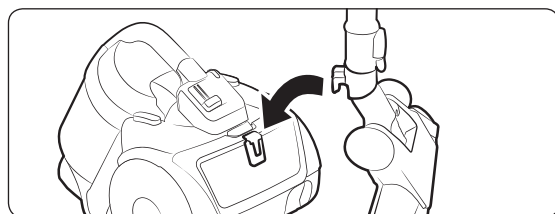
Cleaning the pipe



Cleaning the hose



Storing the vacuum cleaner



Notes and cautions

In use

NOTE

- Safety device will cut off the power when the vacuum cleaner was on for more than 30 minutes without any button input. In this case, press the [Power] button on the body or unplug the power plug and then plug it again.
- If the handle control is not working, the vacuum cleaner can be operated using the [Power] button on the body.
- When you use the dusting brush or crevice tool, you may feel vibration from the vacuum cleaner.
- Please do not press the button of dust bin handle when carrying the vacuum cleaner.
- The operating noise may change once the safety device is activated to prevent the dust bin from getting detached.
 - The circular tube on bottom of the dust bin prevents dust from spilling out.

CAUTION

- When removing the power plug from the electrical outlet, grasp the plug, not the cord.

Cleaning and maintenance

NOTE

- To make the dust filter cleaner, add neutral detergent into lukewarm water and soak the filter for 30 minutes before washing it.
- Do not wash the outlet filter with water.
- To maintain the best performance of the outlet filter, replace them once a year.
- To prevent floors from scratches, inspect condition of the brush and replace it if it is worn down.
- Replacement filters are available at your local Samsung service agent.
- Hold the power cord and then press the Cord rewind button since you can get injured if the power cord may lose control while rewinding it.
- If the power cord is not rewinding well, press the Cord rewind button again after pulling the power cord about 2 ~ 3 m

CAUTION

- Make sure the dust filter is completely dry before putting it back into the vacuum cleaner.
 - Allow 12 hours for it to dry.
- Dry the dust filter in the shade, not under sunlight, to prevent transformation or discoloration.
- You may wash the dust bin with cold water.
- When suction is noticeably reduced continuously or vacuum cleaner abnormally overheats, please clean the outlet filter.
- Suction may reduce noticeably due to wrong reassembling of the dust filter.
- Please contact a nearest service agent if you cannot remove foreign matters from the hose.
- Store the vacuum cleaner in the shade to prevent deformation or discoloration.

Troubleshooting

Symptom	Checklist
Motor does not start.	<ul style="list-style-type: none">• Check the cable, the power plug and outlet.• Leave it to cool.
Suction force is gradually decreasing.	<ul style="list-style-type: none">• Check if there is any blockage, and remove it if required.• Please check the filters, and if required, clean as illustrated in this manual.<ul style="list-style-type: none">- If filters are out of condition, replace them to new ones.
Cord does not rewind fully.	<ul style="list-style-type: none">• Pull the power cord out 2 - 3 m and press the Cord rewind button.
Vacuum cleaner does not pick up dirt.	<ul style="list-style-type: none">• Check the hose, and replace it to new one if required.
Body overheating.	<ul style="list-style-type: none">• Check the filters, and clean as illustrated in the this manual if required.
Static electricity discharge.	<ul style="list-style-type: none">• Reduce suction.• This may also occur when air in the room is very dry. Ventilate the room so that air humidity becomes a normal.

If you have any questions or comments relating to Samsung products, please contact the SAMSUNG customer care center.

Country	Customer Care Center	Web Site
AUSTRALIA	1300 362 603	www.samsung.com/au/support
HONG KONG	3698-4698	www.samsung.com/hk/support (Chinese) www.samsung.com/hk_en/support (English)
MALAYSIA	1800-88-9999	www.samsung.com/my/support
SINGAPORE	1800-SAMSUNG (7267864)	www.samsung.com/sg/support
INDIA	1800 3000 8282 1800 266 8282	www.samsung.com/in/support

This product is RoHS compliant



DJ68-00744H-00