

Bluetooth Mini Remote Speaker Microphone



快速使用手册

Quick use manual

1. 产品概括

1. Product overview



注：3分钟内无法完成配对，遥控器将自动关机
If the pairing cannot be completed within 3 minutes,
the remote control will automatically shut down

2. 手机配对

2.To pair mobile phone

1. 手机关机状态下,长按“电源键”6秒,出现红蓝等交替闪烁松手

1. When speaker microphone is turned off,press and hold “power button” for 6 seconds, when the LED flashes BLUE/RED then release



2. 将手机蓝牙功能打开

2. Turn on your mobile Bluetooth device

3. 扫描蓝牙设备,连接设备名为: B02PTT的蓝牙设备,即可完成手机连接

3. Scan the Bluetooth device, connect the name“B02PTT”Bluetooth device, then the connection is completed

3. 适配器配对

3.To pair adapter

1. 长按适配器“PTT键”,打开对讲机电源,出现红蓝等交替闪烁松手

1. Press and hold adapter “PTT”button, power up the radio, LED flashes BLUE/RED then release.

2. 手机关机状态下,长按“电源键”6秒,出现红蓝等交替闪烁松手

When speaker microphone is turned off,press and hold “power button” for 6 seconds, when the LED flashes BLUE/RED then release

3. 设备会自动连接,连接成功后,适配器蓝灯长亮,手机变为蓝灯慢闪

The device will connect automatically. Once the connection is successful, the adapter's blue light will remain on for a long time, and the microphone will turn into a blue light that flashes slowly

备注:若需要同时连接手机和适配器,请分别与手机,适配器配对,后续打开设备后,即可同时连接上手机和适配器

Note: if the need to connect mobile phone and adapter at the same time, please pair with mobile phones, adapter separately, once they have paired sucessful, when you turn on, they can be connected to the mobile phone and adapter at the same time

4. Zello配对

4. To pair Zello

IOS系统 IOS system

1. 长按“电源键”6秒，出现红蓝等交替闪烁松手

1. Press and hold "power button" for 6 seconds, until LED flashes

2. RED/BLUE then release

2. 将手机蓝牙功能打开

2. Turn on your mobile phone

Bluetooth device

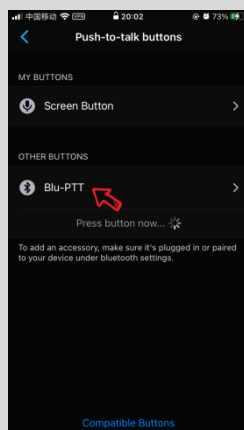
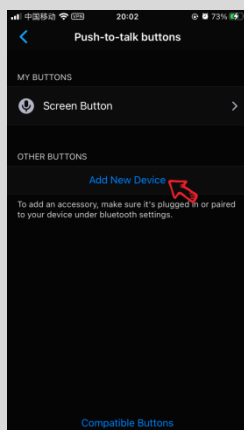
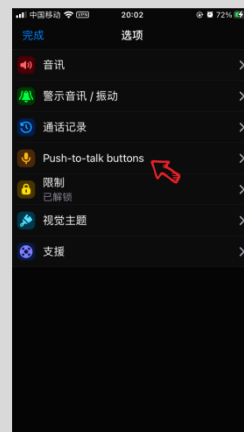
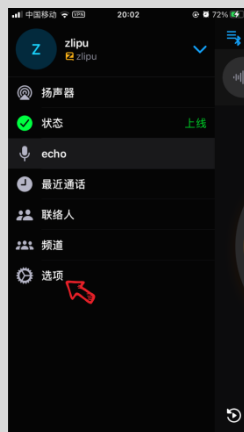
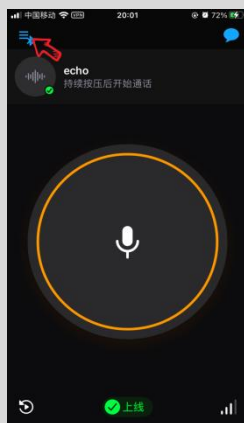


3. 扫描蓝牙设备，连接设备名为：B02PTT的蓝牙设备，即可完成手机连接

3. Scan the Bluetooth device, connect the name "B02PTT" Bluetooth device, then the connection is completed

4. 连接zello软件：打开zello软件>>设置 >>> 选项 >>> Push-to-talk buttons >>> add New Device >>> B02PTT_BLE

4. Connect to Zello APP: open zello APP>Setting>Option> Push-to-Talk-Buttons> Add New Device> B02PTT_BLE



Android系统

1. 长按“电源键”6秒，出现红蓝等交替闪烁松手

1. Press and hold "power button" for 6 seconds, until LED flashes
2. RED/BLUE then release



2. 将手机蓝牙功能打开

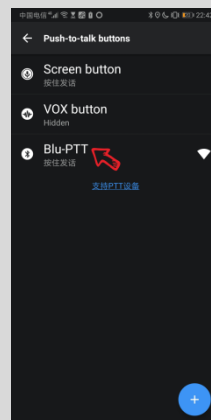
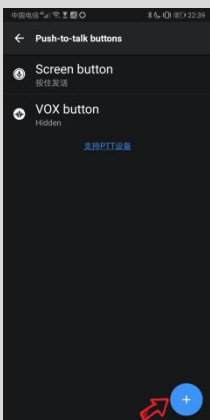
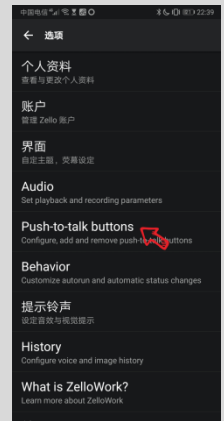
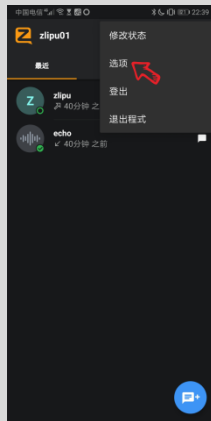
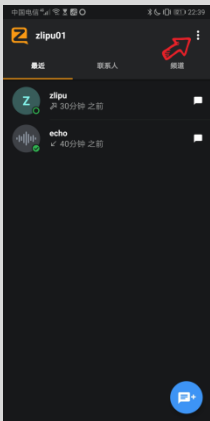
2. Turn on your mobile phone Bluetooth device

3. 扫描蓝牙设备，连接设备名为：B02PTT的蓝牙设备，即可完成手机连接

3. 3. Scan the Bluetooth device, connect the name "B02PTT" Bluetooth device, then the connection is completed

4. 连接zello软件：打开zello软件>>设置 >> 选项 >> Push-to-talk buttons >> 加键按钮 >> 轻触PTT按钮 >> 出现“B02PTT”表示配对成功

4. Connect to Zello APP: Open Zello APP> Seting>Option> Push-to-talk button> "+". Press PTT button>B02PTT appears> connected successfully



3. 如何使用 How to use

功能 Function	操作 Operation	LED状态 LED state
开机 power up	关机状态下，长按“电源键”3秒 In shutdown mode, press "power button" for 3 seconds	蓝灯闪烁 LED flashes Blue
配对 Pairing	关机状态下，长按“电源键”6秒 In shutdown mode, press and hold "power button" for 6 seconds	红、蓝灯交替闪 LED flashes Blue/RED
关机 power down	开机状态下，长按“电源键”3秒 In power up mode, press "power button" 3 seconds	LED熄灭 LED goes out
音量+ Volume +	长按“音量+”，增加音量 Long press "Volume +" to increase the volume	蓝灯闪烁 LED flashes Blue
音量- Volume -	长按“音量-”，降低音量 Long press "Volume -" to lower the volume	蓝灯闪烁 LED flashes Blue
音乐播放/暂停 Music play/pause	单击“电源键”，音乐播放/暂停 Click the "Power Button" to play/pause the music	蓝灯闪烁 LED flashes Blue
下一曲 Next Song	播放音乐时，单击音量+，播放下一曲 When playing music, click Volume + to play the next song	蓝灯闪烁 LED flashes Blue
上一曲 Previous Song	播放音乐时，单击音量-，播放上一曲 When playing music, click Volume - to play the previous Song	蓝灯闪烁 LED flashes Blue
接打电话 Answer calls	来电时，双击“电源键”，接听电话 When the call comes in, double-click the "Power Button" to answer the call	蓝灯闪烁 LED flashes Blue
拒接电话 Reject calls	来电时，长按“电源键”，拒接电话 When a call comes in, hold down the "Power button" for a long time to reject the call	蓝灯闪烁 LED flashes Blue
挂断电话 Hang up calls	通话时，双击：“电源键”，挂断电话 When making a call, double-click the "Power Button" to hang up the phone	蓝灯闪烁 LED flashes Blue

<p>适配器控制 Adapter control</p>	<p>连接状态下, 按下“PTT1”键, 即可遥控通讯, 单连接时, PTT1和PTT2都可控制 In the connected state, press the "PTT1" key to remotely control communication. When connected alone, both PTT1 and PTT2 can be controlled</p>	<p>按下和松开时 蓝灯快闪一次 LED flashes blue once when press and release PTT</p>
<p>zello遥控 Zello remote control</p>	<p>连接状态下, 按下“PTT2”键, 即可遥控通讯, 单连接时, PTT1和PTT2都可控制 In the connected state, press the "PTT2" key to remotely control communication. When connected alone, both PTT1 and PTT2 can be controlled</p>	<p>按下和松开时 蓝灯快闪一次 LED flashes blue once when press and release PTT</p>
<p>低电提示 Low battery</p>	<p>电量低于20%, 每5分钟发出2次嘟嘟声 When the battery level drops below 20%, it makes two beeping sounds every five minutes</p>	<p>红灯每30秒闪烁2次 The LED flashes red 2 times every 30 seconds</p>
<p>关机 Power off</p>	<p>无连接状态下, 长按“PTT”键6秒 In no connection mode, press and hold PTT button for 6 seconds</p>	<p>LED熄灭 LED was stopped</p>

备注:若同时连接适配器和手机后,PTT1和PTT2出现无法控制,只需双击无法控制的PPT按键,即可恢复正常



4. 技术规格

technical

产品参数 Product parameters

产品名称 Product name	Bluetooth Mini Remote Speaker Microphone
产品型号 Model	EP-10001
蓝牙版本 Bluetooth version	BT V5.1
支持协议 support agreement	HFP/A2DP/SPP/BLE
射频等级 frequency grade	Class2
工作距离 working distance	10m
发射功率 transmitting power	-5.24dBm
通讯时间 working time	8H
待机时间 standby time	60H
充电时间 charging time	<2H
输入参数 Input parameter	DC 5V=1A
工作温度 working Temperature	-10°C-45°C

FCC Warning Statement

Changes or modifications not expressly approved by the party responsible for compliance could void the user's authority to operate the equipment. This equipment has been tested and found to comply with the limits for a Class B digital device, pursuant to Part 15 of the FCC Rules. These limits are designed to provide reasonable protection against harmful interference in a residential installation. This equipment generates uses and can radiate radio frequency energy and, if not installed and used in accordance with the instructions, may cause harmful interference to radio communications. However, there is no guarantee that interference will not occur in a particular installation. If this equipment does cause harmful interference to radio or television reception, which can be determined by turning the equipment off and on, the user is encouraged to try to correct the interference by one or more of the following measures:

- Reorient or relocate the receiving antenna.
- Increase the separation between the equipment and receiver.
- Connect the equipment into an outlet on a circuit different from that to which the receiver is connected.
- Consult the dealer or an experienced radio/TV technician for help.

FCC Radiation Exposure Statement

The device has been evaluated to meet general RF exposure requirement. The device can be used in portable exposure condition without restriction.

This device complies with Part 15 of the FCC Rules. Operation is subject to the following two conditions:

- (1) This device may not cause harmful interference.
- (2) This device must accept any interference received, including interference that may cause undesired operation.