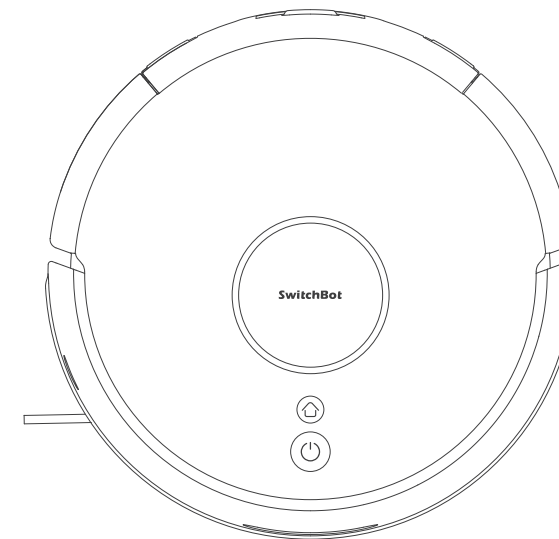


SwitchBot

Mini Robot Vacuum K11+

User Manual



Please read this user manual carefully before using your device.

www.switch-bot.com

V1.2-2407



Thank you for choosing SwitchBot!

This manual will guide you through a comprehensive understanding and quick installation of this product, and provide important information on product usage and maintenance to help you achieve the best product experience.

If you have any questions during use, please call the service hotline or contact the official email. SwitchBot technical support experts will answer your questions.

Setup and Troubleshooting: support.switch-bot.com

Customer Support: support@switch-bot.com

Scannen Sie den QR-Code, um die deutsche Version unseres Benutzerhandbuchs zu erhalten.

Scannez le code QR pour obtenir notre manuel d'utilisation en version française.

Escanee el código QR para obtener la versión en español de nuestro manual de usuario.

Scan de QR code voor de Nederlandse versie van onze gebruikershandleiding.

Scansionate il codice QR per ottenere la versione italiana del nostro manuale d'uso.

<https://www.switch-bot.com/pages/switchbot-user-manual>



Contents

Product Overview

List of Components 01

Preparing for Use

Decluttering 05

Placing the Auto-empty Station 06

Preparing Your Robot 07

Instructions for Use

Connecting to Our App 08

Starting Your Robot 09

Pausing Your Robot 10

Recharging 11

Hibernation 11

Do Not Disturb Mode 11

Child Lock 11

Restoring Factory Settings 11

Care and Maintenance

Cleaning the Bin and Filter 12

Cleaning the Mopping Pad Plate 14

Cleaning the Side Brush 14

Cleaning the Front Caster Wheel 15

Cleaning the Multi-Surface Rubber Brush 15

Cleaning Sensors and Charging Contacts 16

Replacing the Dust Bag 16

Troubleshooting

Common Issues 17

LED Indicator Light Status 19

Network Reconfiguration 20

Firmware Upgrades 20

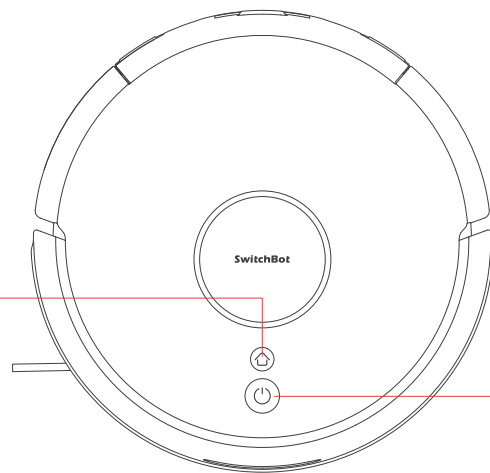
Specifications 20



Product Overview

List of Components

Robot



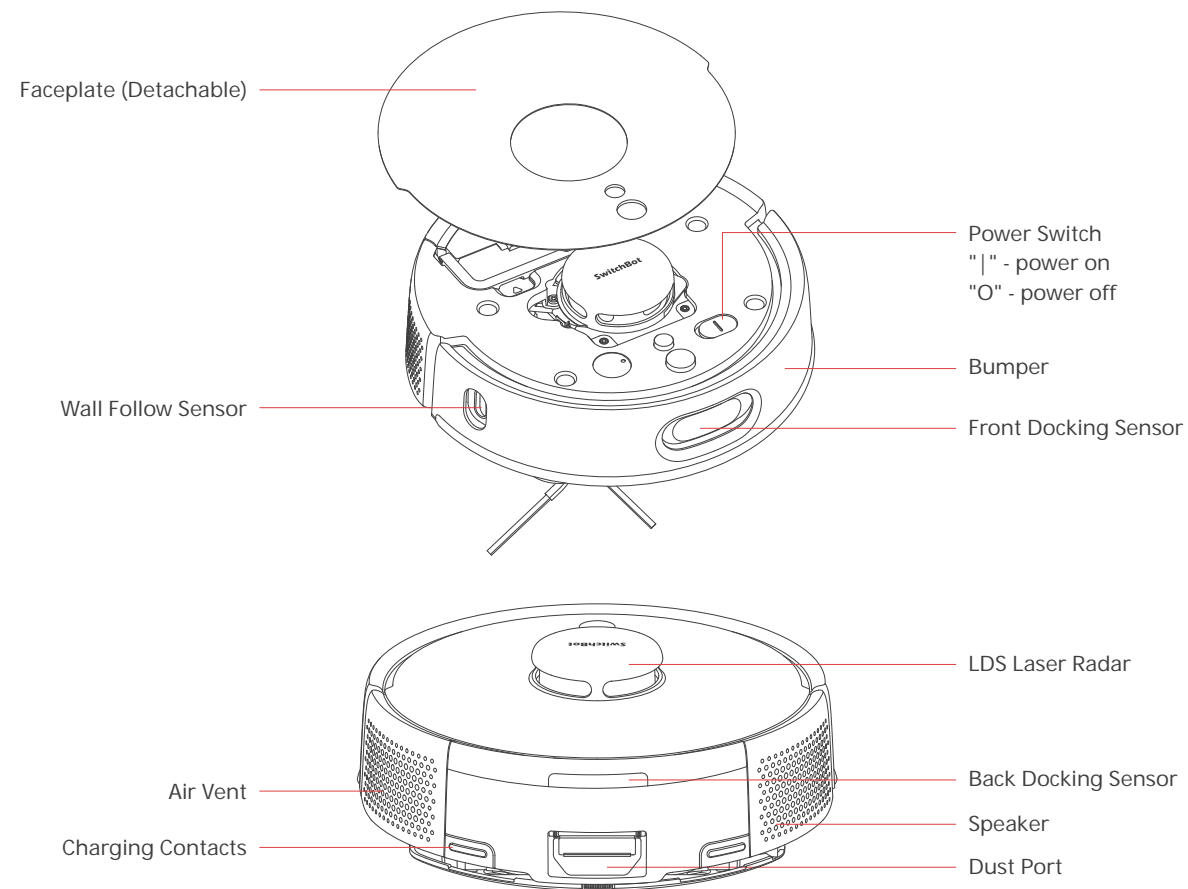
Home Button

- Short press to recharge/ pause recharging

Clean Button

- Long press to turn on/off
- Short press to start/pause cleaning

Robot Top View



Faceplate (Detachable)

Wall Follow Sensor

Power Switch
"|" - power on
"O" - power off

Bumper

Front Docking Sensor

LDS Laser Radar

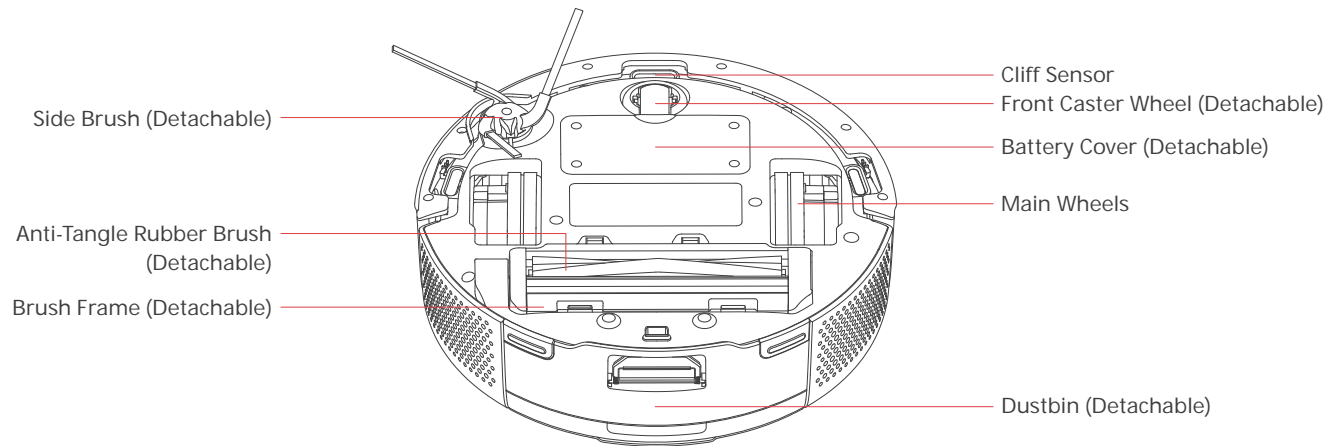
Back Docking Sensor

Speaker

Dust Port

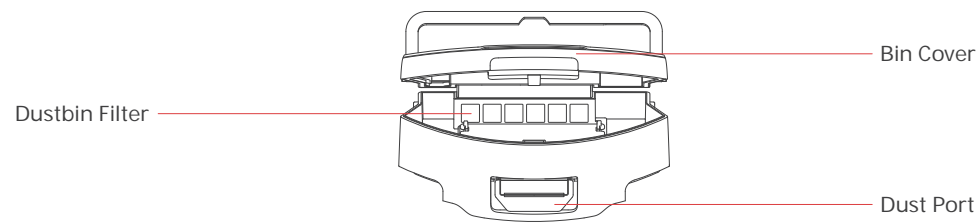
Air Vent

Charging Contacts

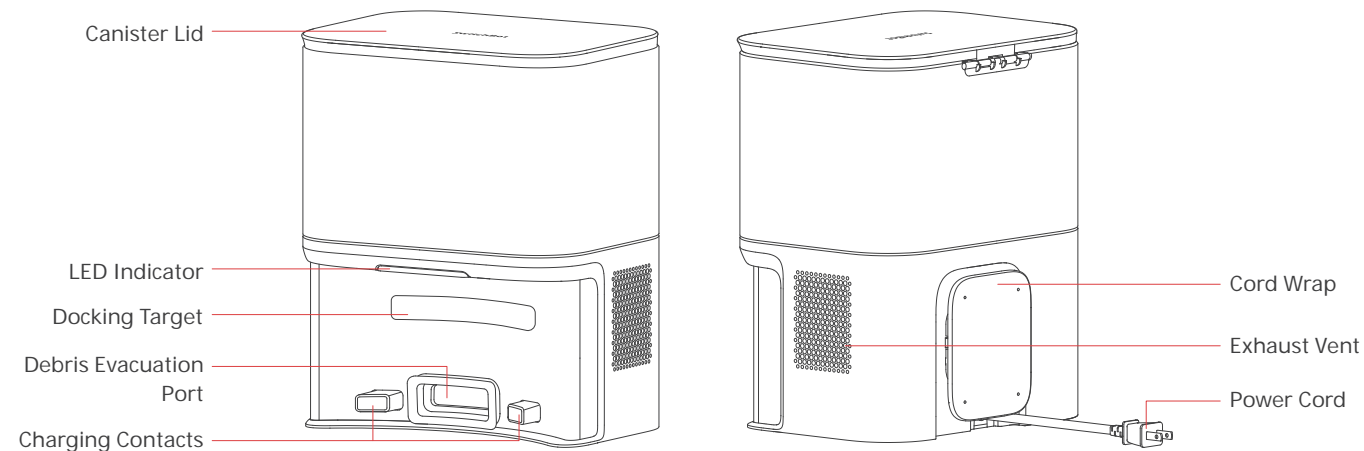


Robot Bottom View

Dustbin

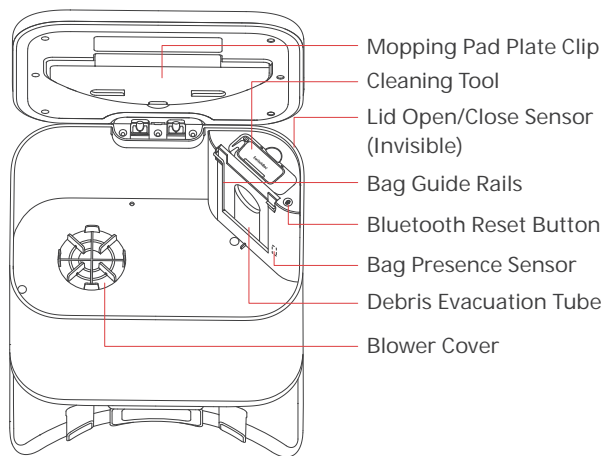


Auto-empty Station

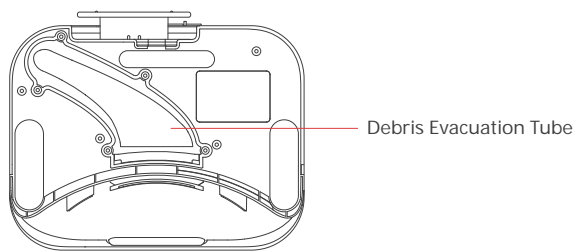


Front View

Back View



Top View



Bottom View

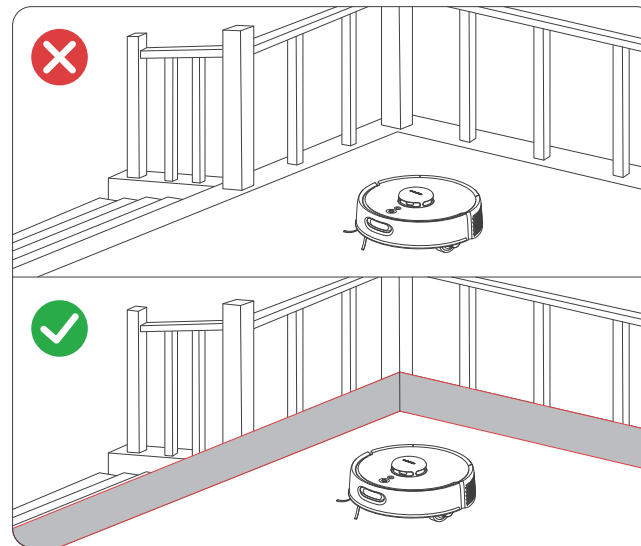
Preparing for Use

Decluttering

Before starting the robot, please check the floor and clean up any scattered items such as wires, socks, slippers, children's toys, etc. to improve the efficiency of the robot. Clear the floor of hard or sharp objects (e.g., nails, glass), and move away items that are fragile, valuable, or potentially dangerous to avoid being caught, tangled, or knocked over by the robot, causing personal injury or property damage.



Before cleaning, please use a physical barrier to avoid areas where robot may fall or get stuck, ensuring the safety and smooth operation of your robot.



Open the doors of the rooms to be cleaned, arrange the furniture neatly, and try to clear a largest cleaning space.

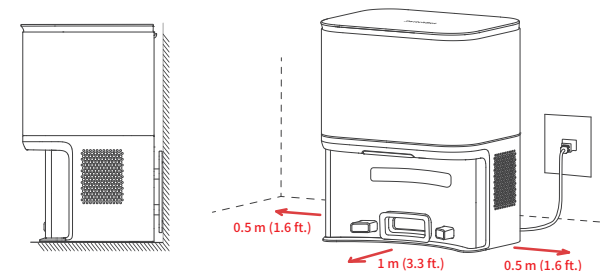
Please avoid standing in front of your robot, doorways, or narrow passages in case your robot cannot detect the area to be cleaned.



1. When using the robot for the first time, follow it throughout its whole cleaning route and watch for potential problems. This will help you identify and resolve minor issues, ensuring a more efficient cleaning process in the future.
2. If the robot gets stuck under low furniture, you can try the following solutions:
 - ① Block the bottom of the furniture;
 - ② Set a virtual wall in the app to prevent the robot from entering;
 - ③ If possible, raise the furniture slightly.

Placing the Auto-empty Station

1. Place the Auto-empty Station on a hard, level surface (such as a floor or ceramic tile) against a wall, ensuring there is at least 1 m (3.3 ft.) of space in front and above, and 0.5 m (1.6 ft.) on both sides. Make sure the location has a good Wi-Fi signal to provide a better network connection and app user experience.



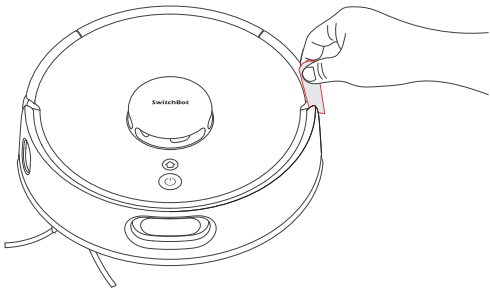
2. Plug the Auto-empty Station into an outlet, ensure the indicator light turns on, and store any excess cable in the Cord Wrap.

Note

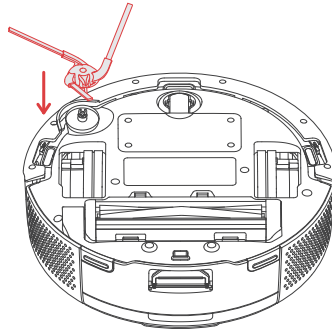
- The power cord may be dragged by the robot if hanging on the ground, causing the Auto-empty Station to move or disconnect from power.
- The indicator light on the Auto-empty Station will stay on when powered, and turn off when the robot is charging.
- If there is an issue with the Auto-empty Station, the indicator light will turn red and stay on as a reminder.
- Make sure to place the Auto-empty Station on a level indoor surface, away from open flames, heat sources, water, narrow spaces, or areas where the robot may fall.
- Placing the Auto-empty Station on non-hard surfaces (such as carpets, mats, etc.) poses a risk of tipping over, and the robot may not be able to leave the Auto-empty Station properly.
- Do not place the Auto-empty Station under direct sunlight or block its signal emitter area with any objects, as this may prevent the robot from returning automatically.
- Please maintain the Auto-empty Station according to the maintenance instructions and avoid using wet cloths or wipes for cleaning.

Preparing Your Robot

Removing the protective foam strips



Installing the Side Brush

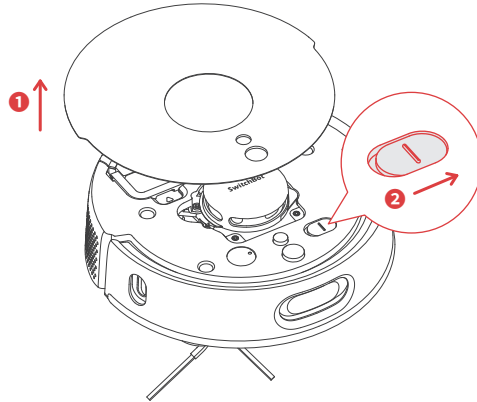


Note

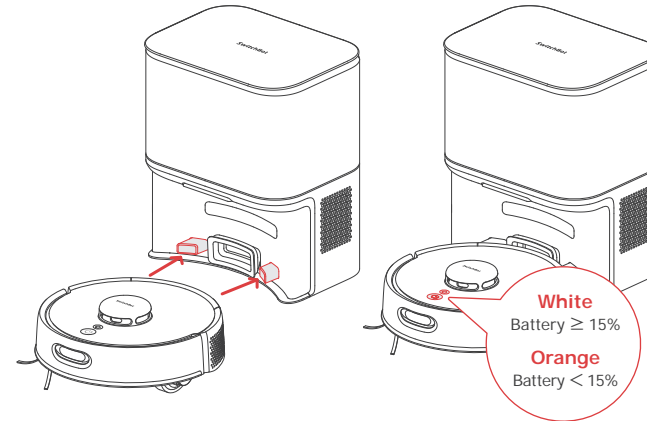
When you hear a clicking sound, it means the Side Brush has been properly installed.

Powering on and charging

1. Remove the faceplate as shown in the picture, and turn on the Power Switch. "I" means powered on, and "O" means powered off.



2. Wait for the indicator light on your robot to turn on, then manually dock your robot to the Auto-empty Station to charge, as shown in the picture. You will hear the voice prompt "Charging".



Note

Before the initial use of the robot, it's advised to charge it for 3 to 4 hours. If it fails to turn on, it may be due to low battery. Please dock the robot directly to the Auto-empty Station.

Instructions for Use

Connecting to Our App

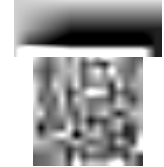
1. Download the SwitchBot app to experience more personalized settings and a better user experience.

You will need:

- A smartphone or tablet using Bluetooth 4.2 or later.
- The latest version of our app, downloadable via the Apple App Store or Google Play Store.
- A SwitchBot account, you can register via our app or sign in to your account directly if you already have one.



iOS 14.0+




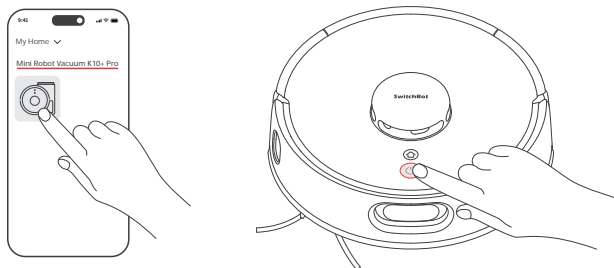
Android OS 5.0+

2. Open our app, tap the "+" icon at the right-hand corner of the home page, select Add Device.
3. Find the device icon and select, follow the instructions to add your device.

Starting Your Robot

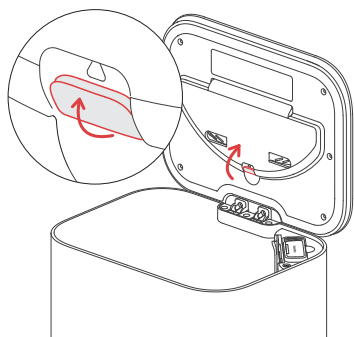
Vacuuming

Press the  button to start cleaning, or control via our app.



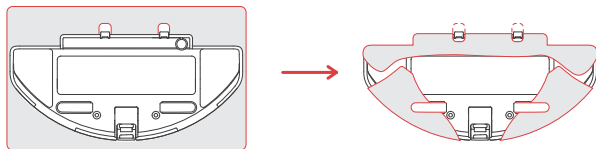
Mopping

1. Open the Canister Lid and take the mopping pad plate off.

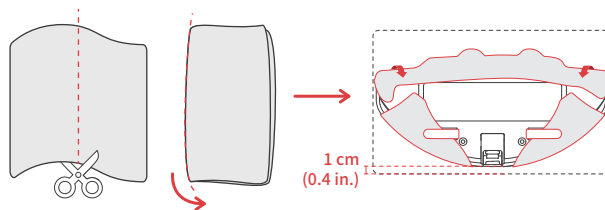


2. Attach a mopping cloth to the mopping pad plate.

Option 1: Use the original mopping cloth



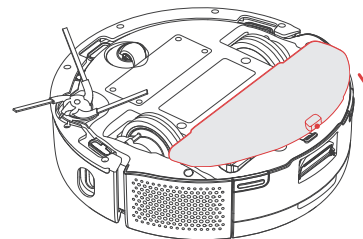
Option 2: Use a common mopping cloth




Note

Dimensions of a common mopping cloth is usually approx. 30 × 20 cm (11.8 × 7.9 in.), while your robot's mopping pad plate is compatible with 20 × 15 cm (7.9 × 5.9 in.) cloth. If you use a common mopping cloth, fold or cut it in half before attaching to the mopping pad plate.

3. Cover the mopping pad plate on the Multi-Surface Rubber Brush.

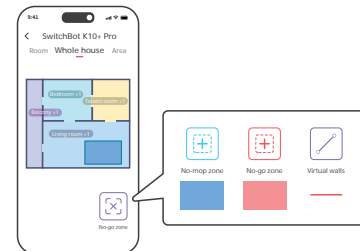


4. Press the  button to start mopping, or control via our app.

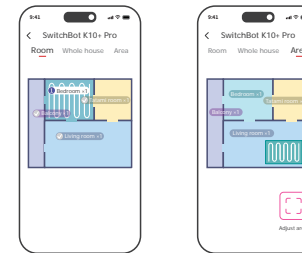


Note

① Set no-go zones in the app so your robot won't mop and wet areas like carpets.





② The mopping cloth will become dry after 20 or 30 minutes of use. It is recommended to only mop designated rooms or areas set in the app.




③ The dry mopping cloth can still wipe away some dust or hair, but it is not as effective as when it's wet. Please replace the dry mopping cloth in time when mopping.

Pausing Your Robot

Press any button on your robot to stop it while working. When paused, tap the  button to resume the previous cleaning task, tap the  button to finish the task, and your robot will return to the Auto-empty Station to recharge.

Recharging

After finishing a cleaning task, your robot will automatically return to the Auto-empty Station to recharge. To manually send it back to recharge, press the  button on your robot. The indicator light will be pulsing when charging.

Note

If the robot cannot find the Auto-empty Station, it will automatically return to the starting position. Please manually dock it to the Auto-empty Station for charging.

Hibernation

If your robot is not operated for more than 10 minutes, it will automatically enter hibernation. Press any button to wake it up.

Note

The robot will not enter hibernation while charging.

Do Not Disturb Mode

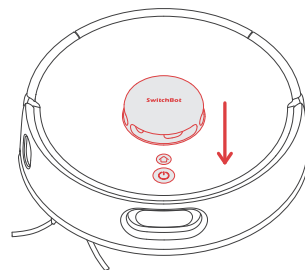
The default setting for this mode is from 22:00 to 08:00, and you can modify or disable this function via our app. During the Do Not Disturb period, device button lights will stay off, and your robot will not automatically resume cleaning or play voice prompts.

Child Lock

You can use the Child Lock function in our app to lock the robot buttons. You can remove this function via our app.

Restoring Factory Settings

Press and hold the , , and **Laser Radar** for 6s at the same time until you hear the voice prompt.



Care and Maintenance

To keep your robot running at peak performance, perform the procedures on the following pages. If you notice the robot picking up less debris from your floor, empty the bin, clean the brushes, and clean or replace the filter if needed. Replace the dust bag in time when it is full.

Part	Care Frequency	Replacement Frequency
Dust Bag		Every 70 days
Bin	Wash bin as needed	
Cliff Sensor	Clean once a month or when prompted by the app	
Filter	Clean once a month or when prompted by the app	Every 2 or 3 months
Front Caster Wheel	Clean once a month. Clean more if your pet sheds a lot.	Every 12 months
Side Brush	Clean once a month. Clean more if your pet sheds a lot.	Every 12 months
Multi-Surface Rubber Brush	Clean once a month. Clean more if your pet sheds a lot.	Every 12 months

Replacement frequency may vary. Parts should be replaced if visible wear appears.

If you need to purchase accessory kits, please visit authorized channels or our official website www.switch-bot.com

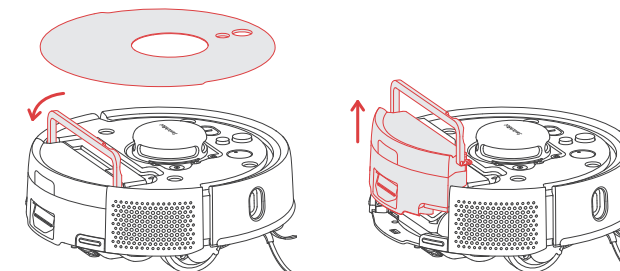
Daily Maintenance (Robot)

Find the cleaning tool in the Auto-empty Station.

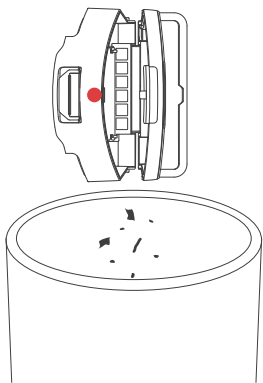


Cleaning the Bin and Filter

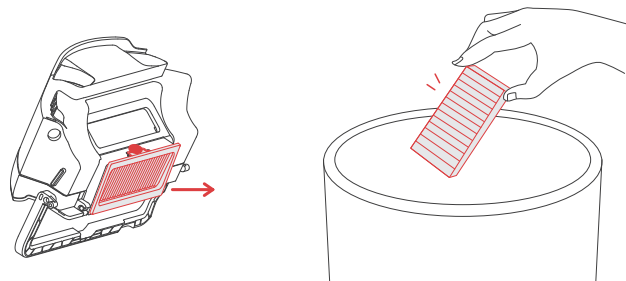
1. Open the faceplate and remove bin.



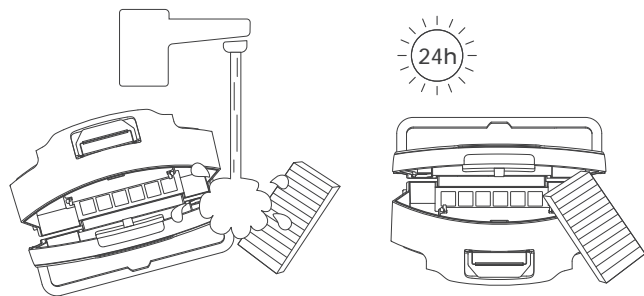
2. Press the red area (marked in the picture) to open and empty the bin.



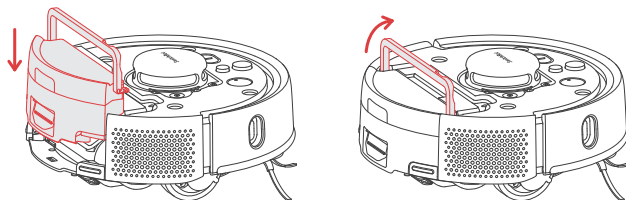
3. Remove the filter and tap to clean it.



4. Rinse the bin and filter using warm water and completely dry them.

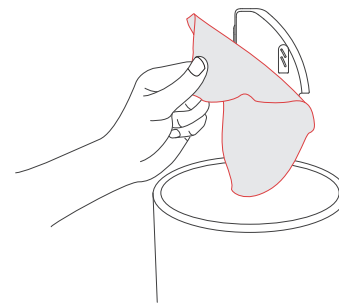


5. Reinstall the filter and bin back in the robot.

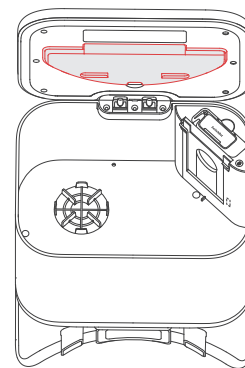


Cleaning the Mopping Pad Plate

1. Remove the mopping pad plate and throw away the disposable mopping cloth. Wash the pad plate with water.

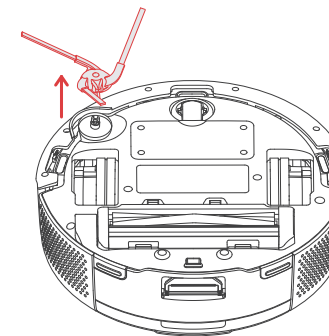


2. Place the Mopping Pad Plate back in the Canister Lid.



Cleaning the Side Brush

1. Pull to remove the Side Brush.



2. Remove any hair or debris and replace the brush.

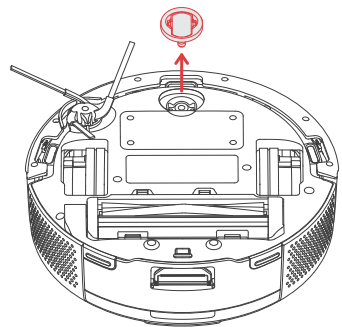
3. Align and reinstall the brush.



Replace the Side Brush once every year.

Cleaning the Front Caster Wheel

1. Pull firmly on the front wheel to remove it from the robot.



2. Remove any debris from inside the wheel cavity.
3. Reinstall the wheel. Make sure the wheel clicks into place.

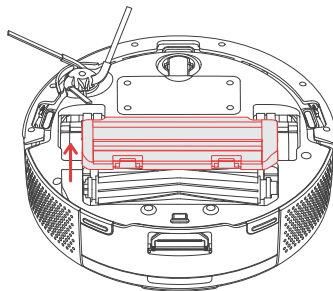


Note

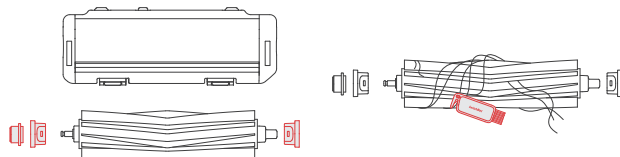
Replace the Front Caster Wheel once every year.

Cleaning the Multi-Surface Rubber Brush

1. Remove the brush frame and lift the brush from the left side.



2. Remove and clean hair and debris from the brush caps. Remove hair from the brush.



3. Reinstall the brush caps into place.

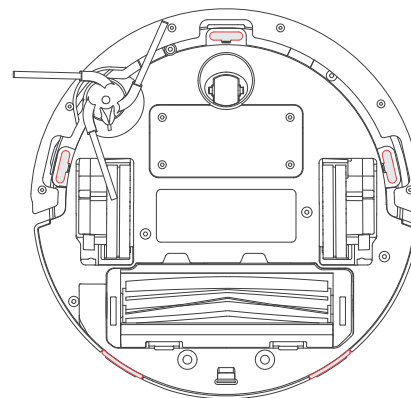
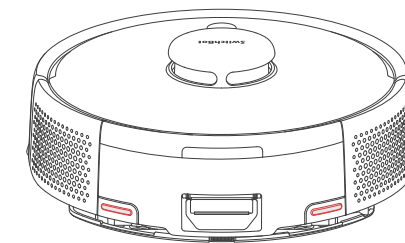


Note

Replace the Multi-Surface Rubber Brush every 12 months.

Cleaning Sensors and Charging Contacts

Wipe sensors and charging contacts with a clean, dry cloth.

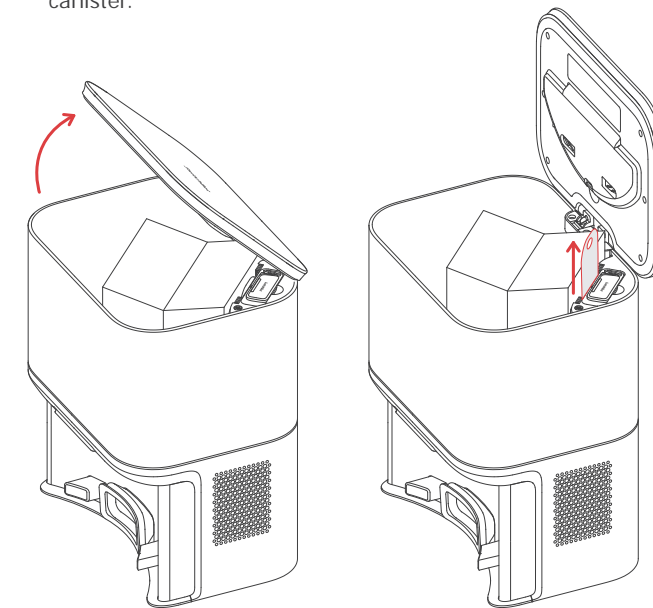


Note

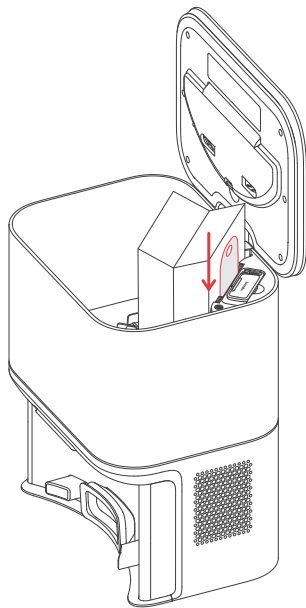
Do not spray cleaning solution or water onto the sensors, sensor openings or charging contacts.

Replacing the Dust Bag

1. Lift up on the canister lid to open.
2. Pull up on the hard paper card to remove the bag from the canister.



- Discard the used bag.
- Install a new bag, sliding the card into the guide rails. Press down on the lid, making sure it is completely closed.



Troubleshooting

Common Issues

Unable to power on

- The battery level is low. Put the robot on the charging station and charge it before use.
- The ambient temperature is too low or too high. Only use the robot within the range of 4°C to 40°C (39°F to 104°F).

Unable to charge

- The Auto-empty Station is not powered, please make sure both ends of the power cord are plugged in properly.
- Poor contact, please clean the charging contacts on the Auto-empty Station and the robot.

Network connection failure

- Incorrect Wi-Fi password, please enter the correct Wi-Fi password.
- Switch to a 2.4GHz network for pairing, as 5GHz networks and enterprise routers are not supported.
- Keep the robot within a range with good Wi-Fi signal strength.
- The robot may not be in the ready-to-configure state, exit the app and re-enter, then follow the pairing steps to try again.

Unable to create partition map in the app

- The robot needs to start mapping from the Auto-empty Station, it is recommended to use the Fast Mapping feature.
- Do not move the robot during the first mapping process to avoid locating failure.
- If the robot does not return to the Auto-empty Station after completing the first mapping task, check and remove any obstacles on the ground.

Cannot locate the Auto-empty Station, unable to return

- The Auto-empty Station is powered off or the robot was moved.
- The charging route is blocked, such as by a closed door.
- Too many obstacles near the Auto-empty Station, please place it in an open area.
- After moving the robot, it will relocate itself. If locating fails, it will generate a new map. If the Auto-empty Station is too far away, it may not be able to recharge, please manually dock the robot back to the Auto-empty Station to charge.
- Wipe the signal emission area of the Auto-empty Station in case there is dust or dirt.
- Gently wipe the Front Docking Sensor of the robot with a soft, dry cloth and keep the lens clean and unobstructed.

Slow charging speed

- The robot takes about 6 hours to charge from low to full battery.
- In high or low-temperature environments, the robot will automatically reduce charging speed to extend battery life.
- The charging contact area may be dirty, please wipe it with a dry cloth.

Abnormal behavior

- Please turn off and restart the robot.

Side Brush fell off

- Please reinstall the Side Brush, making sure to hear a "click" to indicate it is in place.
- The Side Brush may have fallen off due to tangled wires. Please clear wires on the floor before use.

Ground not cleaned up

- The dustbin is full. Please empty it.
- The filter may be clogged with dust. Please check and clean as necessary.
- The filter is not dry after cleaning. Please let it air dry before using.

Dust leaked while working

- Remove the Anti-Tangle Rubber Brush and dustbin, and clear any debris near the Anti-Tangle Rubber Brush.

Loud operating noise

- The dustbin is full. Please empty it.
- Hard objects may be tangled in the Anti-Tangle Rubber Brush and dustbin. Please check and clean as necessary.
- The Side Brush and Anti-Tangle Rubber Brush may be tangled with debris. Please check and clean as necessary.
- You can lower the suction power of the robot to Quiet or Low if necessary.

Abnormal sound emitted while moving

- Rotate and press the wheels to check for any debris tangled or stuck. Clean the debris or contact customer service if the issue persists.

Random movement path

- Loose wires, slippers, and other objects on the floor may affect the robot's normal operation. Please tidy up before use.
- Working on wet and slippery floors may cause the wheels to slip. Please manually wipe or air dry the floor before using.

Stopped due to being stuck

- The robot may be stuck under furniture of a similar height. Consider raising the furniture, manually blocking or using our app to set a virtual wall to avoid the area.
- Check the corresponding area for any wires, curtains, or carpet edges that may be tangled with or obstructing the robot. Manually remove any obstructions for smooth operation.

Missed cleaning some rooms

- Please ensure all room doors are fully opened.
- Check if there is a doorsill higher than 1.8 cm (0.7 in.) at the entrance of the room.
- If the entrance is slippery, causing the robot to skid and malfunction, it is recommended to manually clean up the water on the floor.


Frequently entered No-go Zones or passed Virtual Walls

- Check the app to see if the current map is abnormal. You can restore the map in Maps via our app.
- When setting virtual walls or No-go Zones, adjust the boundaries according to the home environment, making sure to include areas where the robot may get stuck (such as sunken steps, furniture bottoms, etc.).

Ongoing cleaning task interrupted

- When the robot's battery is depleted, it will automatically shut down.
- Note:** If the robot cannot be charged by the Auto-empty Station, the possible cause is that the Auto-empty Station is not connected to power or there is poor contact between the robot and the Auto-empty Station. Please check if the power supply is connected properly.

Didn't resume cleaning after being fully charged

- Make sure the robot is not in Do Not Disturb mode, as it will not resume cleaning in this mode.
- If the robot is manually carried to the Auto-empty Station or is sent to the Auto-empty Station by pressing the  button, it will not resume cleaning after being fully charged.

Scheduled cleaning not performed

- The cleaning will only start when the remaining battery is more than 20%.

Didn't empty dust after returning

- The robot will not empty dust during the Do Not Disturb time period.
- Please check if the dust bag is full. Replace the dust bag in a timely manner, preferably every 1 to 2 months.
- If the dust bag is not full, check for blockages in the Debris Evacuation Port and the bottom Debris Evacuation Tube of the Auto-empty Station. Remove any blockages before using.

LED Indicator on the Auto-empty Station stays orange

- The dust bag is not in position. Please check and install it correctly.
- The dust bag is full. Please check and replace with a new dust bag.
- The canister lid of the Auto-empty Station is not closed. Please check and close it tightly.

LED Indicator Light Status

LED Indicator Light	Descriptions
Solid White	The robot is fully charged or cleaning properly.
Slowly Flashing White	The robot is charging.
Blinking White	The robot is ready to configure Wi-Fi.
Solid Orange	Low battery.
Blinking Orange	The robot has run out of power or an error occurred.

Network Reconfiguration

Press and hold the  and  buttons for 3 seconds to reconfigure your Wi-Fi network.

Firmware Upgrades

In order to improve user experience, we will regularly release firmware updates to introduce new functions and solve any software defects that may occur during usage. When a new firmware version is available, we will send an upgrade notification to your account via our app. When upgrading, please make sure your product has sufficient battery or stay powered on and make sure your smartphone is within range to prevent interference.

Specifications

Mini Robot Vacuum K10+ Pro

Material: ABS Size: 248 × 248 × 92 mm (9.8 × 9.8 × 3.6 in.)
Weight: Approx. 2.3 kg (81.1 oz.) Rated Power: 30 W
Battery Voltage: 14.4 V Battery Capacity: 3200 mAh
Operating Temperature: 0 °C to 30 °C (32 °F to 86 °F)
Connectivity: 2.4 GHz Wi-Fi, Bluetooth 4.2 or later
System Requirements: iOS 14.0+, Android OS 5.0+

Auto-empty Station

Size: 220 × 180 × 250 mm
Rated Input: 24 V  1 A Rated Power (Charging): 30 W
Rated Power (Emptying Dust): 650 W

文件名称: K11+-合规声明-六合一-2502	设计师: WYY	完成时间: 2025/02/21
版本号: V1.0-2502	成品尺寸: 140mm × 200mm	
材质和工艺: 80g书写纸+单色印刷 折页  K=90		
更改内容:		
备注: 修改参数 蓝色线框不印刷 , 此页表格不印刷		

SwitchBot

REGULATORY INFORMATION

SwitchBot Robot Vacuum K11+



CE Warning

To comply with RF exposure requirements, a minimum separation distance of 20 cm must be maintained between the user's body and the device, including the antenna. Use only the supplied or an approved antenna. This device in compliance with the essential requirements and other relevant provisions of directive 2014/53/EU. All essential radio test suites have been carried out.

CE DOC

Hereby, Woan Technology (Shenzhen) Co., Ltd. declares that the radio equipment type W3003100/W3001000 is in compliance with Directive 2014/53/EU. The full text of the EU declaration of conformity is available at the following internet address:
support.switch-bot.com

This product can be used in EU member states and UK.

Manufacturer: Woan Technology (Shenzhen) Co., Ltd.
Address: Room 1101, Qiancheng Commercial Center, No. 5 Haicheng Road, Mabu Community, Xixiang Subdistrict, Bao'an District, Shenzhen, Guangdong, P.R.China, 518100
CE representative: XDH Tech
Address: 2 Rue Coysevox Bureau 3, Lyon, France

Operation frequency (Max power)
Wi-Fi: 2412 MHz to 2472 MHz (< 20 dBm)
BLE: 2402 MHz to 2480 MHz (< 10 dBm)
Operation temperature: 0 °C to 40 °C (39 °F to 104 °F)

FCC Warning

This device complies with Part 15 of the FCC Rules. Operation is subject to the following two conditions:

- (1) This device may not cause harmful interference.
- (2) This device must accept any interference received, including interference that may cause undesired operation.

NOTE: This equipment has been tested and found to comply with the limits for a Class B digital device, pursuant to part 15 of the FCC Rules. These limits are designed to provide reasonable protection against harmful interference in a residential installation.

This equipment generates uses and can radiate radio frequency energy and, if not installed and used in accordance with the instructions, may cause harmful interference to radio communications. However, there is no guarantee that interference will not occur in a particular installation. If this equipment does cause harmful interference to radio or television reception, which can be determined by turning the equipment off and on, the user is encouraged to try to correct the interference by one or more of the following measures:

- Reorient or relocate the receiving antenna.
- Increase the separation between the equipment and receiver.
- Connect the equipment into an outlet on a circuit different from that to which the receiver is connected.
- Consult the dealer or an experienced radio/TV technician for help.

NOTE: The manufacturer is not responsible for any radio or TV interference caused by unauthorized modifications to this equipment. Such modifications could void the user's authority to operate the equipment.

FCC Radiation Exposure Statement

This equipment complies with FCC radiation exposure limits set forth for an uncontrolled environment. This equipment should be installed and operated with minimum distance 20 cm between the radiator & your body.

CLASS 1 CONSUMER LASER PRODUCT

Invisible laser radiation
Laser energy --Exposure near aperture may cause burns
Wavelength: 775 nm-800 nm
Output power: 3.3 V×0.24 A
Frequency: 6Hz
Pulse duration: 3s
Laser of the vacuum cleaner complies with the standard for Class I laser products of EN 50689:2021 & EN 60825-1:2014+A11:2021.

CE-Warnung

Um die Anforderungen an die HF-Exposition zu erfüllen, muss ein Mindestabstand von 20 cm zwischen dem Körper des Benutzers und dem Gerät, einschließlich der Antenne, eingehalten werden. Verwenden Sie nur die mitgelieferte oder eine zugelassene Antenne. Dieses Gerät entspricht den grundlegenden Anforderungen und anderen relevanten Bestimmungen der Richtlinie 2014/53/EU. Alle wesentlichen Funktestreihen wurden durchgeführt.

CE-DOC

Hiermit erklärt Woan Technology (Shenzhen) Co., Ltd. dass die Funkanlage (des Typs W3003100/W3001000) mit der Richtlinie 2014/53/EU übereinstimmt. Der vollständige Text der EU-Konformitätserklärung ist unter der folgenden Internetadresse verfügbar: support.switch-bot.com

Dieses Produkt kann in den EU-Mitgliedsstaaten und in Großbritannien verwendet werden.

Hersteller: Woan Technology (Shenzhen) Co., Ltd.
Adresse: Raum 1101, Qiancheng Commercial Center, Nr. 5 Haicheng Road, Mabu Community, Xixiang Subdistrict, Bao'an District, Shenzhen, Guangdong, P.R.China, 518100
CE-Vertreter: XDH Tech
Anschrift: 2 Rue Coysevox Bureau 3, Lyon, Frankreich

Betriebsfrequenz (maximale Leistung)
Wi-Fi: 2412 MHz bis 2472 MHz (<20 dBm)
BLE: 2402 MHz bis 2480 MHz (< 10 dBm)
Betriebstemperatur: 0 °C bis 40 °C

Avertissement CE

Pour respecter les exigences en matière d'exposition aux radiofréquences, une distance de séparation minimale de 20 cm doit être maintenue entre le corps de l'utilisateur et l'appareil, y compris l'antenne. N'utilisez que l'antenne fournie ou une antenne approuvée. Cet appareil est conforme aux exigences essentielles et aux autres dispositions pertinentes de la directive 2014/53/UE. Toutes les suites de tests radio essentiels ont été effectuées.

CE DOC

Par la présente, Woan Technology (Shenzhen) Co, Ltd déclare que le type d'équipement radio (W3003100/W3001000) est conforme à la directive 2014/53/UE. Le texte intégral de la déclaration de conformité UE est disponible à l'adresse internet suivante : **support.switch-bot.com**.

Ce produit peut être utilisé dans les États membres de l'UE et au Royaume-Uni.

Fabricant : Woan Technology (Shenzhen) Co, Ltd.
Adresse : Appartement 1101, Centre Commercial de Qiancheng, No. 5 de la route de Haicheng, Communauté de Mabu, Sub-district de Xixiang, District de Bao'an, Shenzhen, Guangdong, République populaire de Chine, 518100
Représentant CE : XDH Tech
Adresse : 2 Rue Coysevox Bureau 3, Lyon, France

Fréquence de fonctionnement (Puissance maximale)
Wi-Fi : 2412 MHz à 2472 MHz (<20 dBm)
BLE : 2402 MHz à 2480 MHz (<10 dBm)
Température de fonctionnement : 0 à 40 °C

Avvertenza di CE

Per rispettare i requisiti di esposizione alle radiofrequenze, è necessario mantenere una distanza minima di 20 cm tra il corpo dell'utente e il dispositivo, compresa l'antenna. Utilizza esclusivamente l'antenna in dotazione o un'antenna approvata. Questo dispositivo è conforme ai requisiti essenziali e alle altre disposizioni pertinenti della direttiva 2014/53/UE. Sono state eseguite tutte le suite di test radio essenziali.

DOC CE

Con la presente, Woan Technology (Shenzhen) Co., Ltd. dichiara che il tipo di apparecchiatura radio (W3003100/W3001000) è conforme alla Direttiva 2014/53/UE. Il testo completo della dichiarazione di conformità UE è disponibile al seguente indirizzo internet: **support.switch-bot.com**

Questo prodotto può essere utilizzato negli Stati membri dell'UE e nel Regno Unito.

Produttore: Woan Technology (Shenzhen) Co., Ltd.
Indirizzo: Room 1101, Qiancheng Commercial Center, No. 5 Haicheng Road, Mabu Community, Xixiang Subdrict, Bao'an District, Shenzhen, Guangdong, P.R.China, 518100
Rappresentante CE: XDH Tech
Indirizzo: 2 Rue Coysevox Bureau 3, Lione, Francia

Frequenza di funzionamento (potenza massima)
Wi-Fi: da 2412 MHz a 2472 MHz (<20 dBm)
BLE: da 2402 MHz a 2480 MHz (<10 dBm)
Temperatura di funzionamento: da 0 a 40 °C

Advertencia CE

Para cumplir con los requisitos de exposición a RF, se debe mantener una distancia mínima de separación de 20 cm entre el cuerpo del usuario y el dispositivo, incluyendo la antena. Utilice solo la antena suministrada o una aprobada. Este dispositivo cumple con los requisitos esenciales y otras disposiciones relevantes de la directiva 2014/53/UE. Se han llevado a cabo todas las pruebas de radio esenciales.

DOC CE

Por la presente, Woan Technology (Shenzhen) Co., Ltd. declara que el equipo de radio (tipo W3003100/W3001000) cumple con la Directiva 2014/53/UE. El texto completo de la declaración de conformidad de la UE está disponible en la siguiente dirección de internet: **support.switch-bot.com**

Este producto puede ser utilizado en los estados miembros de la UE y el Reino Unido.

Fabricante: Woan Technology (Shenzhen) Co., Ltd.
Dirección: Sala 1101, Centro Comercial Qiancheng, No. 5 Haicheng Road, Comunidad Mabu, Subdistrito Xixiang, Distrito Bao'an, Shenzhen, Guangdong, P.R.China, 518100
Representante CE: XDH Tech
Dirección: 2 Rue Coysevox Bureau 3, Lyon, Francia

Frecuencia de Operación (Potencia máxima)
Wi-Fi: 2412 MHz a 2472 MHz (< 20 dBm)
BLE: 2402 MHz a 2480 MHz (<10 dBm)
Temperatura de operación: 0 a 40 °C

CE Waarschuwing

Om te voldoen aan de RF-blootstellingsvereisten, moet een minimale afstand van 20 cm worden aangehouden tussen het lichaam van de gebruiker en het apparaat, inclusief de antenne. Gebruik alleen de meegeleverde of een goedgekeurde antenne. Dit apparaat voldoet aan de essentiële eisen en andere relevante bepalingen van richtlijn 2014/53/EU. Alle essentiële radiotestreeksen zijn uitgevoerd.

CE DOC

Hierbij verklaart Woan Technology (Shenzhen) Co., Ltd. dat de radiouitrusting van het type (W3003100/W3001000) voldoet aan Richtlijn 2014/53/EU. De volledige tekst van de EU-verklaring van conformiteit is beschikbaar op het volgende internetadres: **support.switch-bot.com**

Dit product kan worden gebruikt in EU-lidstaten en het Verenigd Koninkrijk.

Fabrikant: Woan Technology (Shenzhen) Co., Ltd.
Adres: Kamer 1101, Qiancheng Commercial Center, Nr. 5 Haicheng Road, Mabu Community, Xixiang Subdistrict, Bao'an District, Shenzhen, Guangdong, V.R. China, 518100
CE-vertegenwoordiger: XDH Tech
Adres: 2 Rue Coysevox Bureau 3, Lyon, Frankrijk

Bedrijfsfrequentie (Maximaal vermogen)
Wi-Fi: 2412 MHz tot 2472 MHz (<20 dBm)
BLE: 2402 MHz tot 2480 MHz (< 10 dBm)
Bedrijfstemperatuur: 0 tot 40 °C