

PRINT ARTWORK ON DIRECTLY ON PAPER.

**DO NOT PRINT RED FOLD AND CUT LINES.** OPEN USER MANUAL DIMENSIONS: 6.46"W x 5.5" H



FOLD LINE



CUT LINE

FRONT

ijoy

**WIRELESS  
KEYBOARD**

ijoy



**USER  
MANUAL**

**•YOUR IJOY PRODUCT**

Thank you for purchasing and using the IJOY WIRELESS KEYBOARD. Before using this product, carefully read this manual to in order to operate at maximum benefit. Please ask your local dealer or call us if you have any questions.

IJOY KEYBOARD x 1  
User Manual x 1  
USB-A Receiver x 1

**•PRODUCT SPECIFICATIONS**

- Wireless Distance: 10m/32.8ft.
- Working Current: 6 mA
- Working Voltage: 3V
- Battery Requirement: 2x1.5V AAA alkaline batteries (Not Included)
- Model: IJIO662-FB
- With a USB A receiver Without LED light
- System switching method:
  - FN+A switches to MAC system
  - FN+S switches to WIN system
- FCC ID: 2AJQ7KEYBOARD2
- FCC ID: 2AJQ7DONGLE4
- Frequency: 2402-2480MHz

QUEST USA CORP.  
495 Flatbush Ave Brooklyn, NY 11225

© GOIJOY & IJOY are registered trademarks of QUEST USA CORP. All other trademarks and trade names are property of their respective owners. Designed by GOIJOY & IJOY in New York. All rights reserved QUEST USA CORP.

Made in China.

**•FCC ID STATEMENT**

This device complies with part 15 of the FCC Rules. Operation is subject to the following two conditions:

- (1) This device may not cause harmful interference, and
- (2) this device must accept any interference received, including interference that may cause undesired operation.

Warning: Changes or modifications not expressly approved by the party responsible for compliance could void the user's authority to operate the equipment.

NOTE: This equipment has been tested and found to comply with the limits for a Class B digital device, pursuant to Part 15 of the FCC Rules. These limits are designed to provide reasonable protection against harmful interference in a residential installation. This equipment generates uses and can radiate radio frequency energy and, if not installed and used in accordance with the instructions, may cause harmful interference to radio communications. However, there is no guarantee that interference will not occur in a particular installation. If this equipment does cause harmful interference to radio or television reception, which can be determined by turning the equipment off and on, the user is encouraged to try to correct the interference by one or more of the following measures:

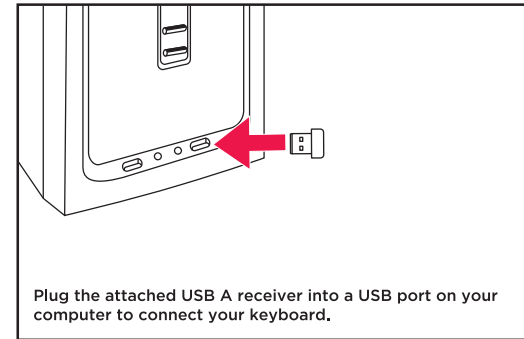
Reorient or relocate the receiving antenna.  
Increase the separation between the equipment and receiver. Connect the equipment into an outlet on a circuit different from that to which the receiver is connected.  
Consult the dealer or an experienced radio/TV technician for help.

RF warning statement:  
This equipment complies with FCC radiation exposure limits set forth for an uncontrolled environment.

BACK

**•CONNECTING THE WIRELESS KEYBOARDS**

- Put 2 x AAA batteries into the battery compartment on the back (not included).
- Turn the back switch to "ON".
- Plug the attached USB A receiver into a USB port on your computer to connect your keyboard.



Plug the attached USB A receiver into a USB port on your computer to connect your keyboard.

**•NOTES**

- While connected, the keyboard will enter standby mode without any operation, and after 3 minutes without operation it will enter the Deep Sleep Mode - Press any key to wake it up immediately.
- While not connected, keyboard will enter Deep Sleep Mode in 3 minutes - Press any key to wake it up.

**•CAUTION**

- This is not a toy. Please keep away from small children.
- Please keep the unit away from water and heat.

**•OTHER IMPORTANT SAFETY INFORMATION**

Disposal of old electrical & electronic equipment (Applicable in the European Union and other European Countries with separate collection systems.) The trash can symbol (seen on bottom right) on the product or on its packaging indicates that this product shall not be treated as household waste. Instead it shall be handed over to the applicable collection point for recycling of electronic equipment. By ensuring this product is disposed of correctly, you will help prevent potential negative consequences for the environment and human health, which could otherwise be caused by inappropriate waste handling. For more detailed information about this product, please contact your local household waste disposal service or the shop where you purchased this item.

**⚠WARNING: TO AVOID BATTERY LEAKAGE**

- 1) The batteries used with this product are small parts and should be kept away from small children who still put things in their mouths. If they are swallowed, promptly see a doctor and have the doctor phone American Association of Poison Control Centers (1-800-222-1222).
- 2) Always purchase the correct size and grade of battery most suitable for intended use.
- 3) Do not mix old and new batteries, alkaline, standard (Carbon - Zinc) or rechargeable (Nickel-cadmium) batteries.
- 4) Clean the battery contacts and those of the device prior to battery installation.
- 5) Ensure the batteries are installed correctly with the regard to polarity (+ and -).
- 6) Always remove batteries if consumed or if product is to be left unused for a long time.



PRINT ARTWORK ON DIRECTLY ON PAPER.

**DO NOT PRINT RED FOLD AND CUT LINES.** OPEN USER MANUAL DIMENSIONS: 6.46"W x 5.5" H

FOLD LINE

CUT LINE

FRONT

ijoy

WIRELESS  
KEYBOARD

ijoy



USER  
MANUAL

**•YOUR IJOY PRODUCT**

Thank you for purchasing and using the IJOY WIRELESS KEYBOARD. Before using this product, carefully read this manual to in order to operate at maximum benefit. Please ask your local dealer or call us if you have any questions.

IJOY KEYBOARD x 1  
User Manual x 1  
USB-A Receiver x 1

**•PRODUCT SPECIFICATIONS**

- Wireless Distance: 10m/32.8ft.
- Working Current: 6 mA
- Working Voltage: 3V
- Battery Requirement: 2x1.5V AAA alkaline batteries (Not Included)
- Model: IJIO663-FB
- With a USB A receiver Without LED light
- System switching method:
  - FN+A switches to MAC system
  - FN+S switches to WIN system
- FCC ID: 2AJQ7KEYBOARD2
- FCC ID: 2AJQ7DONGLE4
- Frequency: 2402-2480MHz

QUEST USA CORP.  
495 Flatbush Ave Brooklyn, NY 11225

© GOIJOY & IJOY are registered trademarks of QUEST USA CORP. All other trademarks and trade names are property of their respective owners. Designed by GOIJOY & IJOY in New York. All rights reserved QUEST USA CORP.

Made in China.

**•FCC ID STATEMENT**

This device complies with part 15 of the FCC Rules. Operation is subject to the following two conditions:

- (1) This device may not cause harmful interference, and
- (2) this device must accept any interference received, including interference that may cause undesired operation.

Warning: Changes or modifications not expressly approved by the party responsible for compliance could void the user's authority to operate the equipment.

NOTE: This equipment has been tested and found to comply with the limits for a Class B digital device, pursuant to Part 15 of the FCC Rules. These limits are designed to provide reasonable protection against harmful interference in a residential installation. This equipment generates uses and can radiate radio frequency energy and, if not installed and used in accordance with the instructions, may cause harmful interference to radio communications. However, there is no guarantee that interference will not occur in a particular installation. If this equipment does cause harmful interference to radio or television reception, which can be determined by turning the equipment off and on, the user is encouraged to try to correct the interference by one or more of the following measures:

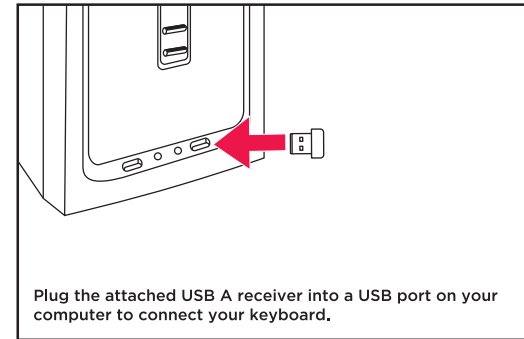
Reorient or relocate the receiving antenna.  
Increase the separation between the equipment and receiver. Connect the equipment into an outlet on a circuit different from that to which the receiver is connected.  
Consult the dealer or an experienced radio/TV technician for help.

RF warning statement:  
This equipment complies with FCC radiation exposure limits set forth for an uncontrolled environment.

BACK

**•CONNECTING THE WIRELESS KEYBOARDS**

- Put 2 x AAA batteries into the battery compartment on the back (not included).
- Turn the back switch to "ON".
- Plug the attached USB A receiver into a USB port on your computer to connect your keyboard.



Plug the attached USB A receiver into a USB port on your computer to connect your keyboard.

**•NOTES**

- While connected, the keyboard will enter standby mode without any operation, and after 3 minutes without operation it will enter the Deep Sleep Mode - Press any key to wake it up immediately.
- While not connected, keyboard will enter Deep Sleep Mode in 3 minutes - Press any key to wake it up.

**•CAUTION**

- This is not a toy. Please keep away from small children.
- Please keep the unit away from water and heat.

**•OTHER IMPORTANT SAFETY INFORMATION**

Disposal of old electronic & electronic equipment (Applicable in the European Union and other European Counties with separate collection systems) The trash can symbol (seen on the bottom) on the production indicates that this product shall not be treated as household waste. Instead it shall be handed over to the applicable collection point for recycling of electronic equipment. By ensuring this product is disposed of correctly, you will help prevent potential negative consequences for the environment and human health, which could otherwise be caused by inappropriate waste handling. For more detailed information about this product, please contact your local household waste disposal service or the shop where you purchased this item.

**⚠ WARNING: TO AVOID BATTERY LEAKAGE**

- 1) The batteries used with this product are small parts and should be kept away from small children who still put things in their mouths. If they are swallowed, promptly see a doctor and have the doctor phone American Association of Poison Control Centers (1-800-222-1222).
- 2) Always purchase the correct size and grade of battery most suitable for intended use.
- 3) Do not mix old and new batteries, alkaline, standard (Carbon - Zinc) or rechargeable (Nickel-cadmium) batteries.
- 4) Clean the battery contacts and those of the device prior to battery installation.
- 5) Ensure the batteries are installed correctly with the regard to polarity (+ and -).
- 6) Always remove batteries if consumed or if product is to be left unused for a long time.

