



User Manual

Wireless Keyboard Model: BK60

Crafting Art through Typing & Tapping

English

Package Contents

- 1 x Wireless Solar Keyboard
- 1 x User Manual

Specifications

Connection Type	Bluetooth 5.0
Bluetooth Technology	Bluetooth Low Energy
Dimensions	429.4*150.5*20.63mm
Connected Devices	Up to 3
Layout Compatibility	Windows/Mac
Power	Solar Pannel + CR2032 Battery
Solar Charge Time (500 lux)	5-7 Hours by Solar / light
Solar Work Time without Light	3-4 Days (based on 2 hours/day)
CR2032 Battery Working Time	13 Months (based on 2 hours/day)
Sleep Time	30 Minutes (press any key to wake)
Key Structure	Scissor Switch
Frequency Band	2402MHz - 2480MHz
Maximum Transmission power	0 dBm

System Requirements

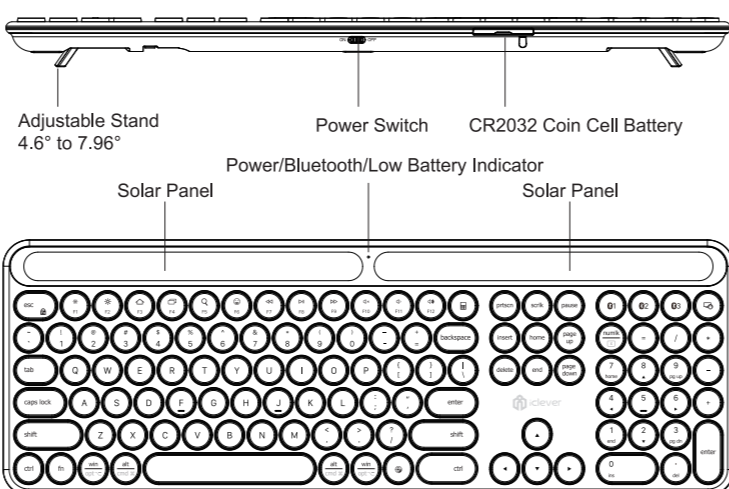
- ▶ iOS 9.0 or later iPhone/iPad
- ▶ macOS 10.12 or later Mac/iMac
- ▶ Windows 8 or later with Bluetooth HID Profile PC/laptop/tablet
- ▶ Android 6.0 or later smartphone

NOTE:

It is **not fully compatible with Bluetooth adapter, Mac mini, Samsung Smart TV, and Nokia phones.**

- 1 -

Product Overview



Power Indicator: slide the power switch to ON to turn on the keyboard.
Bluetooth Indicator: hold and press Bluetooth Button for 3 seconds to pair mode and the indicator keep flashing.
Low Battery Indicator: when the keyboard is at critical battery level (5% or below), the battery LED will pulse red.

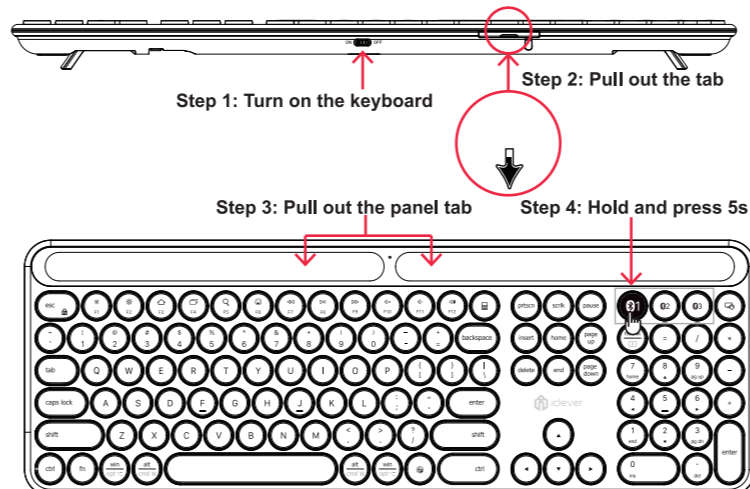
Power Saving Mode

The keyboard will enter power-saving mode after 30 minutes of inactivity. Press any key to activate it.

Note: there may be a slight typing delay during the first 3 seconds of waking up.

- 2 -

Guide to Use



A. How to pair with Bluetooth devices?

Pair with the 1st device

- Step 1. Move the power switch to "ON" to turn on the keyboard, and the indicator will be on for 3s.
- Step 2. Pull out the tab from the top side to activate the CR2032 Battery.
- Step 3. Pull out tabs from two of Solar Pannel to activate it.
- Step 4. Click once to choose Bluetooth channel 1, then hold and press this button for 5s until the indicator keeps flashing to Bluetooth pairing mode.
- Step 5. On your device, open the Bluetooth settings and select "iClever Solar KB" from the list to connect it.

- 3 -

How to find "iClever Solar KB" in different system:

- ▶ For Windows 10: Click Win Key > Settings > Devices > Bluetooth & other devices > Add Bluetooth or other device > Bluetooth > select "iClever Solar KB" to connect.
- ▶ For Mac (MacBook/iMac): Click System Preferences > Bluetooth > select "iClever Solar KB" to connect.
- ▶ For iOS (iPad/iPhone) and Android: Click Setting > Bluetooth > select "iClever Solar KB" to connect.

Pair with the 2nd device

- Step 1. Click once to choose Bluetooth channel 2, then hold and press this button for 5s until the indicator keeps flashing to Bluetooth pairing mode.
- Step 2. On your device, open the Bluetooth settings and select "iClever Solar KB" from the list to connect it.

Pair with the 3rd device

- Step 1. Click once to choose Bluetooth channel 3, then hold and press this button for 5s until the indicator keeps flashing to Bluetooth pairing mode.
- Step 2. On your device, open the Bluetooth settings and select "iClever Solar KB" from the list to connect it.

Notes:

- the Bluetooth pairing name may be shown as "Keyboard".
- keep the keyboard and your Bluetooth device in 30cm in Bluetooth pairing.
- each channel can pair with 1 device (3 channels in total).
- the keyboard will connect with the last-used device automatically.

B. Switch connection between multiple devices

Switch connection between multiple devices previously connected
 Press the corresponding button to switch keyboard connection to previously connected devices.

- 4 -

Keys and Functions

The table below describes special key combinations for different operating systems.

Function Keys	Mac OS	Android	Windows 10	Mac OS	Windows
Way to use	Press directly	Press directly	Press fn +	Press fn +	Press directly
	Brightness -	Brightness -	Brightness -	F1	F1
	Brightness +	Brightness +	Brightness +	F2	F2
	Home or N/A	Home or N/A	Web Browser	F3	F3
	N/A	N/A	Switch apps	F4	F4
	N/A	N/A	Search	F5	F5
	N/A	N/A	Emoji	F6	F6
	Previous track	Previous track	Previous track	F7	F7
	Play/pause	Play/pause	Play/pause	F8	F8
	Next track	Next track	Next track	F9	F9
	Mute	Mute	Mute	F10	F10
	Volume -	Volume -	Volume -	F11	F11
	Volume +	Volume +	Volume +	F12	F12

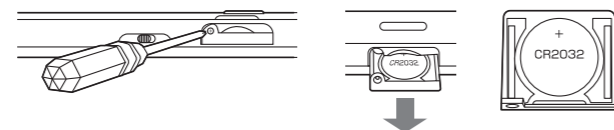
- 5 -

Special Key	Description
	Press "fn" + "esc" keys to turn on/off fn lock function. For Windows users, your keyboard has by default access to the F-keys. If you prefer to have direct access to Media and Hotkeys such as Volume Down, Volume Up, Play/Pause, and so on, simply press "fn" + "esc" keys to swap them.
	The "fn" key is used in combination with other keys to access special features.
	Switch function: press this key to Bluetooth Channel 1. Pairing function: hold and press it for 5 seconds, and the Bluetooth channel 1 indicator will flash blue to pairing mode.
	Switch function: press this key to Bluetooth Channel 2. Pairing function: hold and press it for 5 seconds, and the Bluetooth channel 2 indicator will flash blue to pairing mode.
	Switch function: press this key to Bluetooth Channel 3. Pairing function: hold and press it for 5 seconds, and the Bluetooth channel 3 indicator will flash blue to pairing mode.
	It works as screen lock. NOTE: not works for Android device.
	It works as "win" when your system is Windows. It works as "option" when your system is iOS or Mac OS.
	It works as "alt" when your system is Windows or Android. It works as "command" when your system is iOS or Mac OS.
	It works as "number lock" when your system is Windows and Android. It works as "clear" when your system is Mac OS. NOTE: not works for iOS devices.
	It works "calculator" in Windows. NOTE: works for Windows PC/laptop only.

- 6 -

Change/ Remove Battery

1. When the keyboard is at critical battery level (5% or below), the battery LED will pulse red.
2. Use a screwdriver to remove screw on the battery tray.
3. Pull the battery tray out and replace the old battery with CR2032 coin cell battery.
4. Dispose of the battery according to local laws.



Contact

For more questions, please contact us by support@iclever.com

FAQ

Delay/laggy when typing or frequently get disconnected.

1. Restart your Bluetooth device.
2. Make sure that iClever device and your device are within close proximity of each other.
3. Try moving away at least 8 inches from:
 - Any device that could emit wireless waves: Microwave, cordless phone, baby monitor, wireless speaker, garage door opener, WIFI router
 - Computer power supplies, Metal or metal wiring in the wall
4. Do not use your wireless keyboard on metal surfaces.
5. Check your computer memory, insufficient memory may cause the delay.
6. Try on a different APP/device to connect.

- 7 -

My keyboard is not working.

- ▶ Is the keyboard turned on? Slide the keyboard Off/On switch to Off and then to On position.
- ▶ Restart your Bluetooth computer/laptop/tablet/smartphone.
- ▶ Remove the connection record
For example, for iPad, click "Settings" > "Bluetooth" > under "MY DEVICE" to delete all the Bluetooth connection records
- ▶ On your device, turn off the Bluetooth and turn it on again to Refresh.
For example, for iPad, click "Settings" > "Bluetooth" > if the on-screen switch beside Bluetooth currently shows as ON, tap it twice to refresh it
- ▶ Re-establish the connection.

How much light is needed?

iClever Solor Keyboard requires only a modest level of light to operate and store energy. Indirect sunlight or indoor illumination is fine. When exposed to dim room light on a continuous basis, the keyboard has enough power for use. Because indoor environments usually have periods of darkness, a moderate level of room lighting is recommended for much of the day.
 The recharge time for the keyboard is much less in brightly lit environments or when the keyboard is placed in direct sunlight.
 The keyboard stores energy automatically, even when turned off. This stored energy allows you to use the keyboard without light for a while. With a full charge, the keyboard can operate up to 3 days in total darkness before needing a recharge.

Checking for adequate light

To check the battery status, there's no shortcut. When the keyboard's battery reaches a critical level (5% or below), the battery LED will pulse red.

Why is a CR2032 coin cell battery built in?

The CR2032 backup battery guarantees that the keyboard remains functional even in darkness or low light. This battery can power the keyboard for more than 13 months, based on 2 hours of daily use.

- 8 -

FCC Statement

Changes or modifications not expressly approved by the party responsible for compliance could void the user's authority to operate the equipment. This equipment has been tested and found to comply with the limits for a Class B digital device, pursuant to Part 15 of the FCC Rules. These limits are designed to provide reasonable protection against harmful interference in a residential installation. This equipment generates uses and can radiate radio frequency energy and, if not installed and used in accordance with the Instructions, may cause harmful interference to radio communications. However, there is no guarantee that interference will not occur in a particular installation. If this equipment does cause harmful interference to radio or television reception, which can be determined by turning the equipment off and on, the user is encouraged to try to correct the interference by one or more of the following measures:

- Reorient or relocate the receiving antenna.
- Increase the separation between the equipment and receiver.
- Connect the equipment into an outlet on a circuit different from that to which the receiver is connected.
- Consult the dealer or an experienced radio/TV technician for help.

This device complies with part 15 of the FCC rules. Operation is subject to the following two conditions (1) this device may not cause harmful interference, and (2) this device must accept any interference received, including interference that may cause undesired operation.

- 9 -

WARNING!

The product contains non-replaceable batteries. Remove and Immediately recycle or dispose of used batteries according to local regulations and keep away from children. Do NOT dispose of batteries in household trash or incinerate.
 Even used batteries may cause severe injury or death.
 Call a local poison control center for treatment information. Non-rechargeable batteries are not to be recharged.
 Do not force discharge, recharge, disassemble, heat above (manufacturer's specified temperature rating: 65°) or incinerate. Doing so may result in injury due to venting, leakage or explosion resulting in chemical burns
 The compatible battery type(CR2032)
 The nominal battery voltage: 3V
 Ensure the batteries are installed correctly according to polarity(+ and -) .
 Do not mix old and new batteries, different brands or types of batteries, such as alkaline, carbon-zinc, or rechargeable batteries.
 Remove and immediately recycle or dispose of batteries from equipment not used for an extended period of time according to local regulations.
 Always completely secure the battery compartment. If the battery compartment does not close securely, stop using the product, remove the batteries, and keep them away from children.

- 10 -

WARNING
 INGESTION HAZARD: This product contains a button cell or coin battery.

WARNING
 This product contains a button cell or coin battery.
 DEATH or serious injury can occur if ingested.
 A swallowed button cell or coin battery can cause Internal Chemical Burns in as little as 2 hours.
 KEEP new and used batteries OUT OF REACH of CHILDREN
 Seek immediate medical attention if a battery is suspected to be swallowed or inserted inside any part of the body.

