

purellusion[®]

Ultra Premium Filtration™ *Crystalline*



Installation Instructions

Properly Installing Crystalline Filters

purellusion[®]

Ultra Premium Filtration™ *Crystalline*



Filter Module Locations

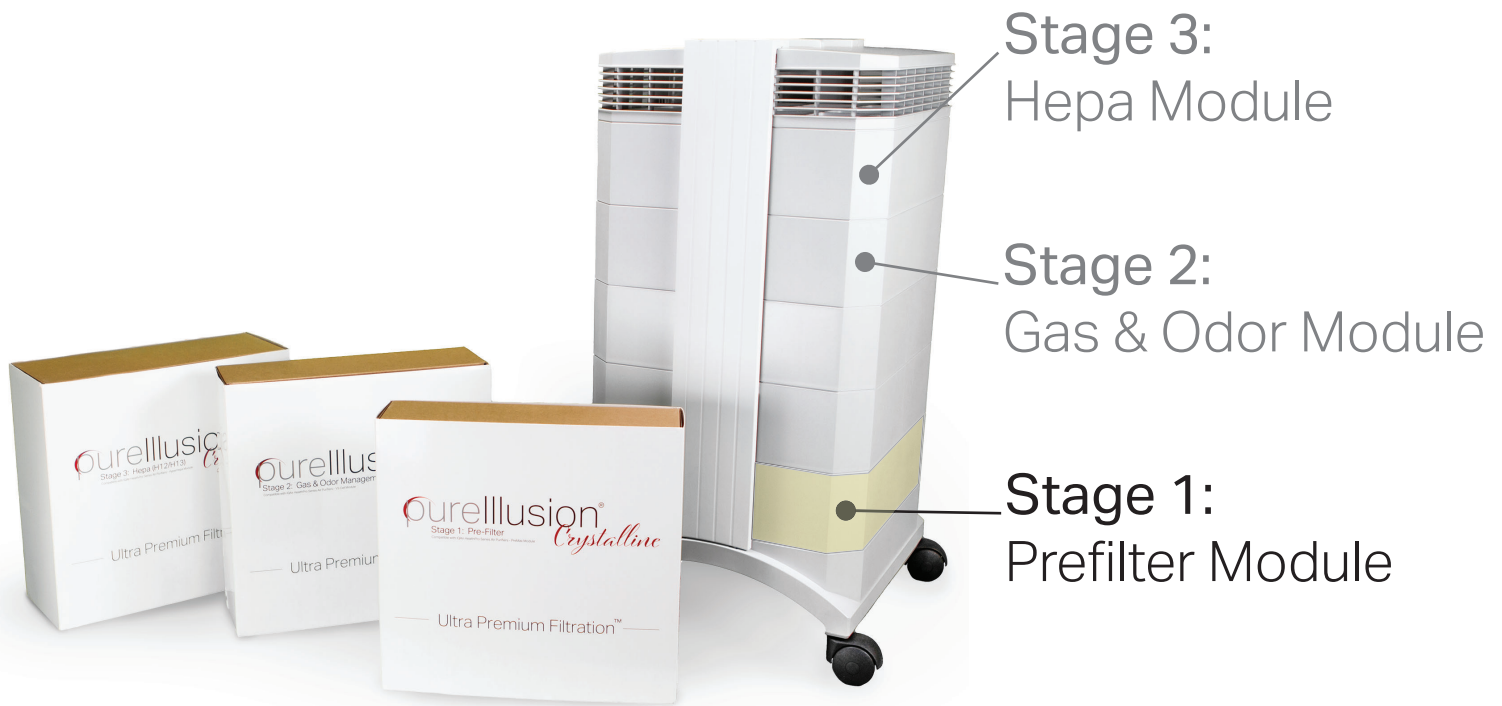


Crystalline Stage 1: Prefilter

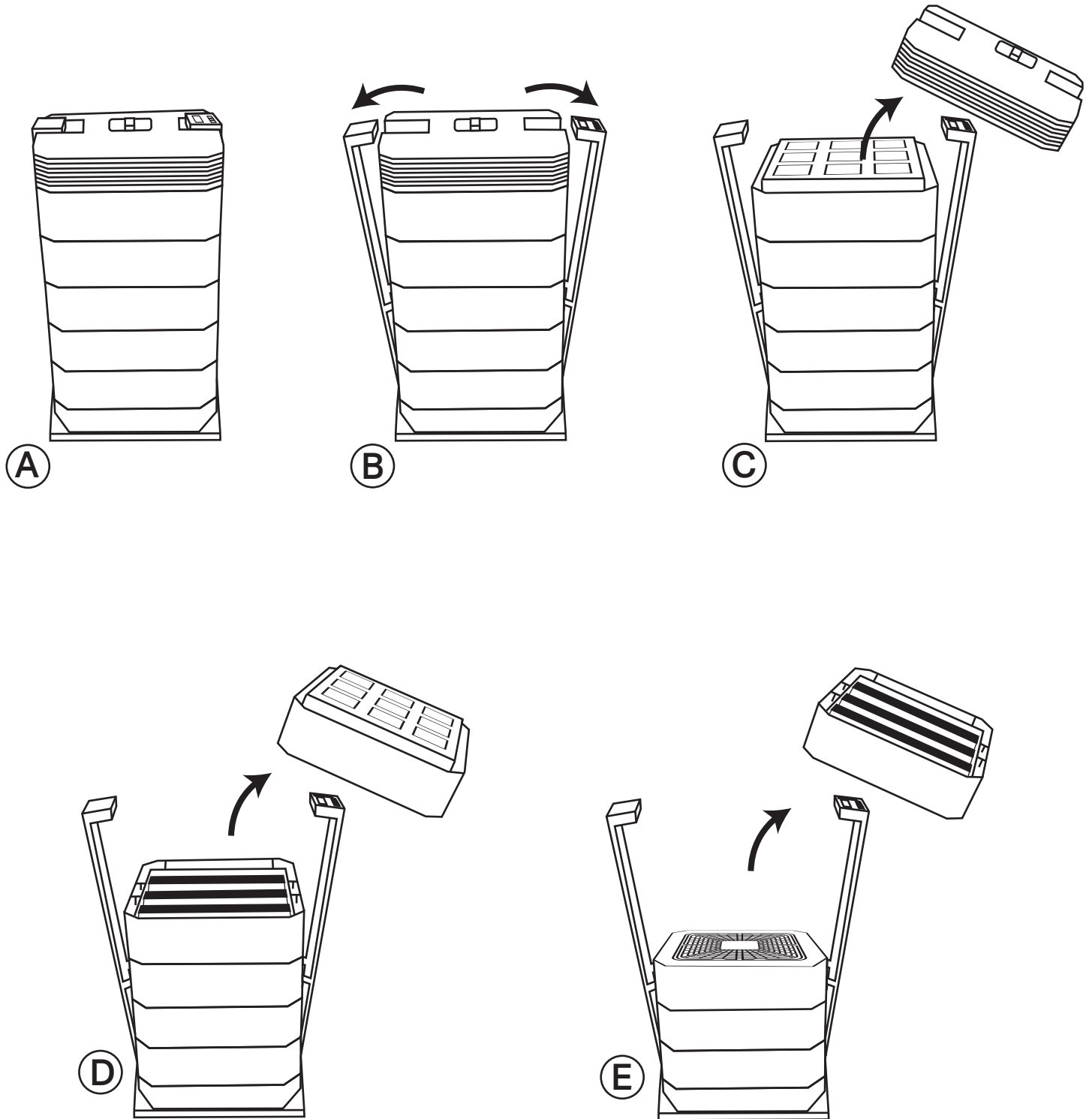
Installation Guide

purellusion[®]

Ultra Premium Filtration™ *Crystalline*



Prefilter Module Location

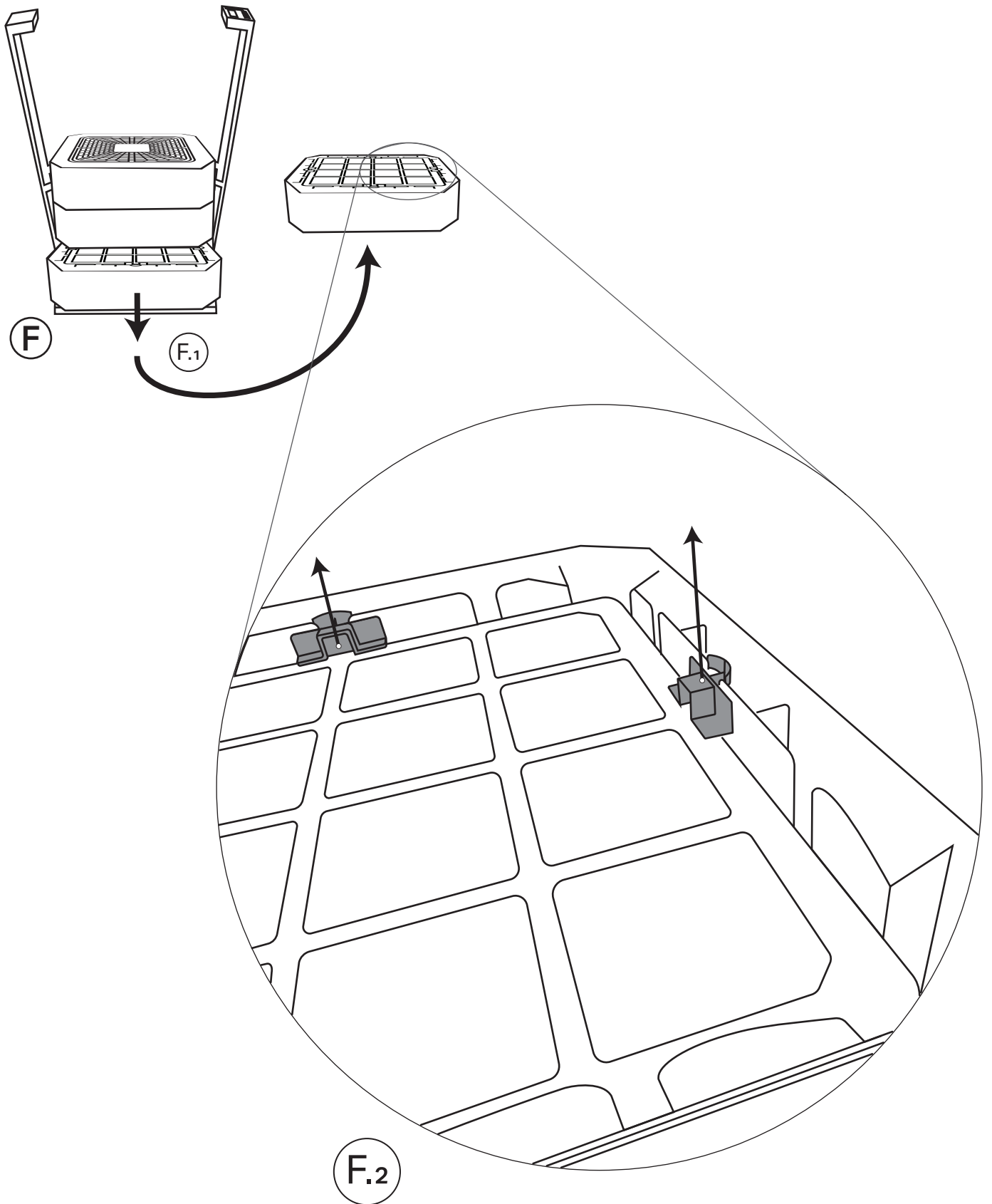


Crystalline Stage 1: Prefilter

Removing the Prefilter Module

purellusion[®]

Ultra Premium Filtration™ *Crystalline*



purellusion®
Ultra Premium Filtration™ *Crystalline*



Crystalline Stage 1: Prefilter

Installing into the Prefilter Module

purellusion®

Ultra Premium Filtration™ *Crystalline*



1. Remove Shrink Wrap



2. Remove Box Sleeve



3. Remove Filter from box and polybag

purellusion[®]

Ultra Premium Filtration™ *Crystalline*

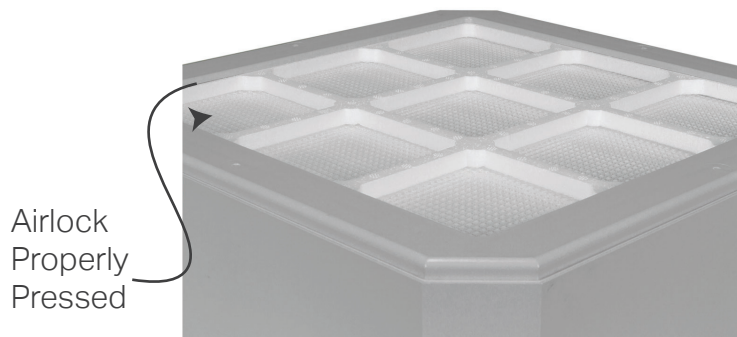


4. Place Crystalline Prefilter into the Stage 1 module tray



5. Notice Airlock Ridge on the **bottom** of the module

6. **Press** Airlock Ridge into Crystalline Airlock Channel



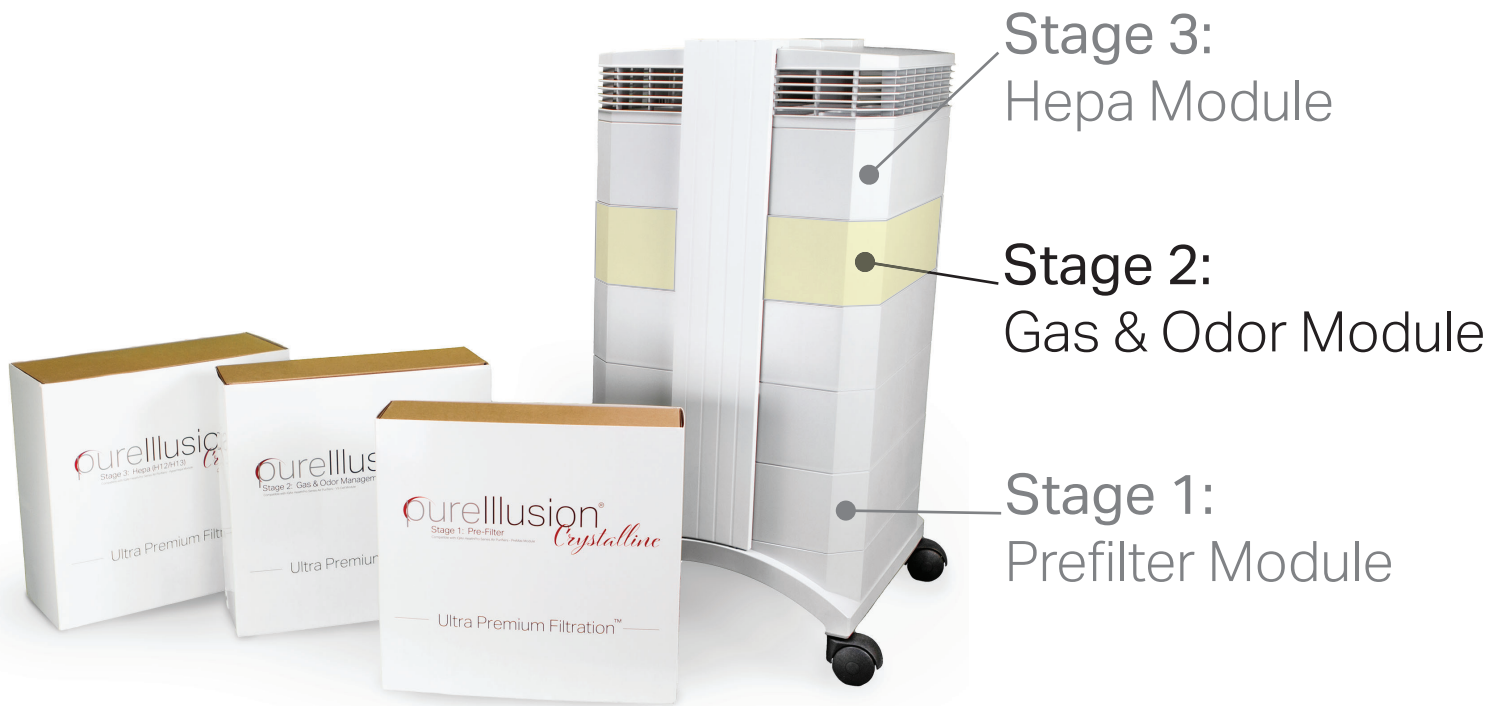
7. Verify Airlock Ridge is seated into Airlock Channel

8. Reinstall gray clips

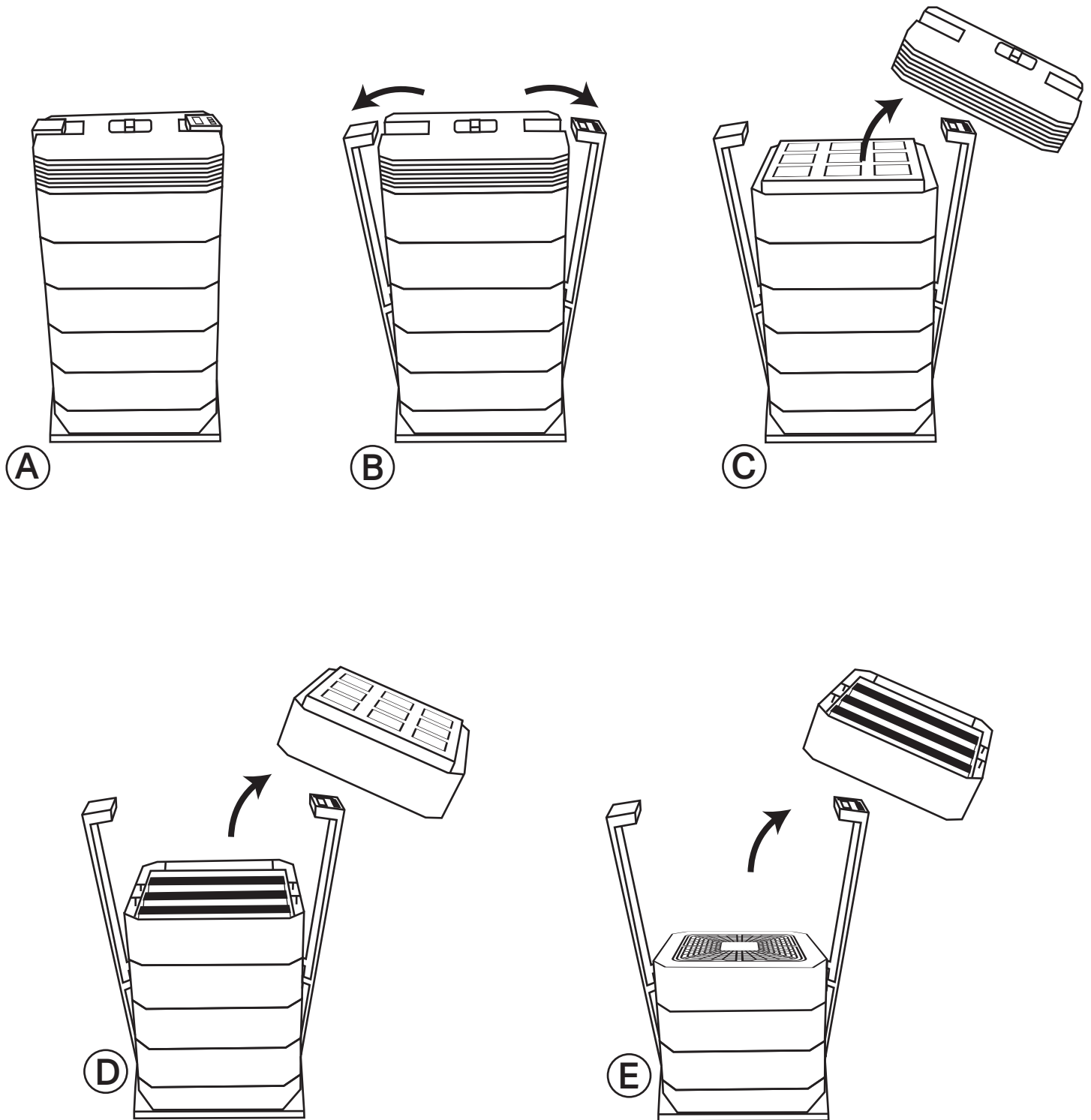
9. Done. Crystalline Stage 1: Prefilter installed into module.

Crystalline Stage 2: Gas & Odor Management Filter

Installation Guide



Gas & Odor Management Filter Module Location



Crystalline Stage 2: Gas & Odor filter

Removing the Gas & Odor Module

purellusion®
Ultra Premium Filtration™ *Crystalline*



Crystalline Stage 2: Gas & Odor Management Filter

Installing into the Gas & Odor Module

purellusion®

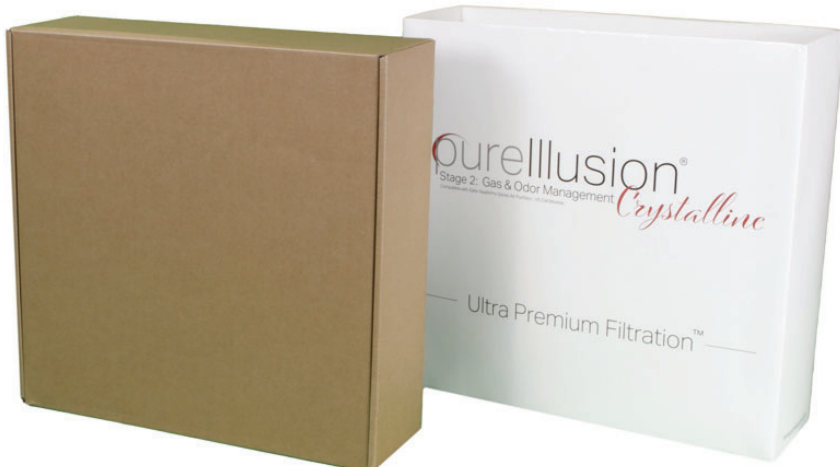
Ultra Premium Filtration™ *Crystalline*



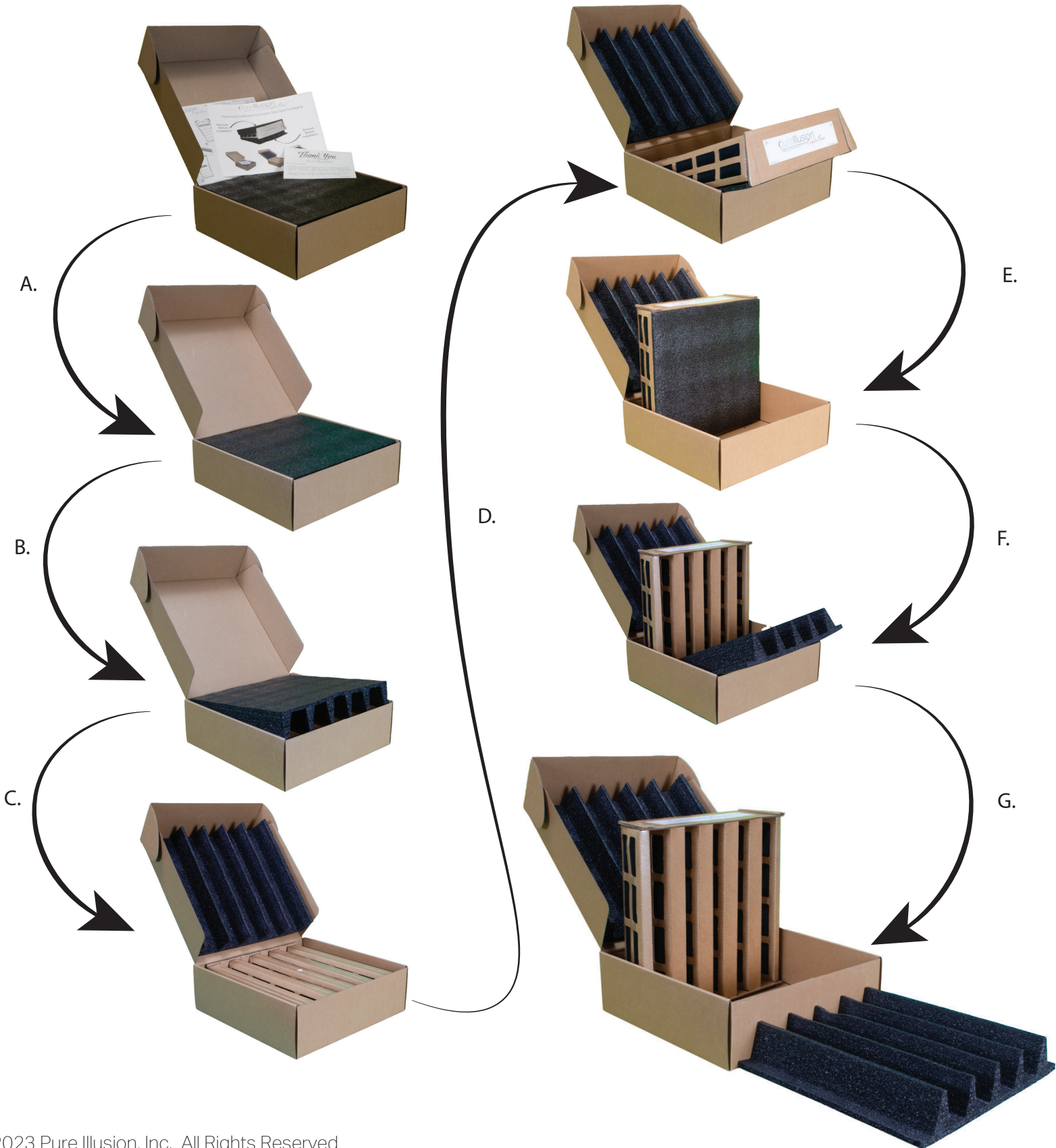
1. Remove Shrink Wrap



2. Remove Box Sleeve



4. Remove Ship Safe Packaging From Stage 2 Gas & Odor Management Filter



purellusion[®]

Ultra Premium Filtration™ *Crystalline*



5. Place Stage 2 Gas & Odor Filter into Stage 2 module tray



6. Place Stage 3 Hepa module onto Stage 2 Gas & Odor module



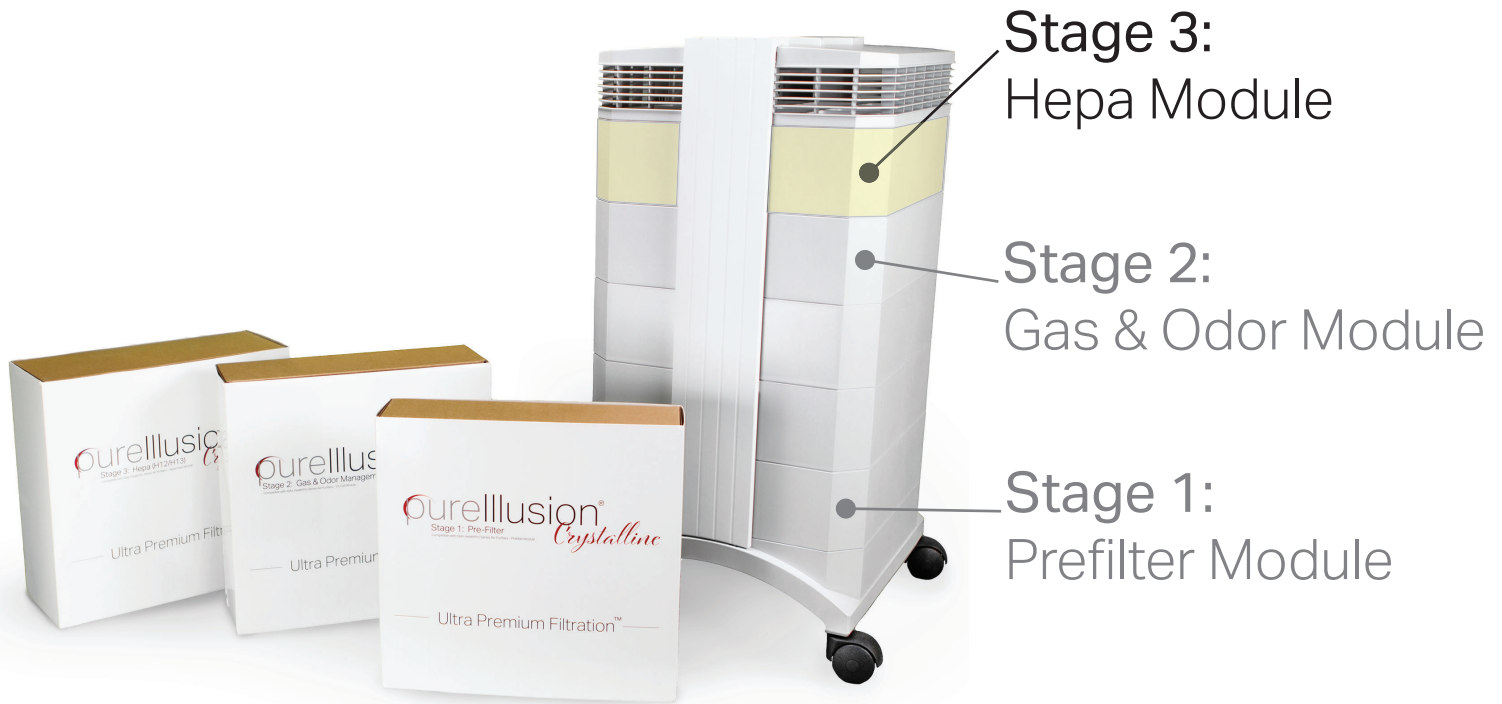
7. Fully close Stage 3 Hepa Module on the Stage 2 Gas & Odor Module

Crystalline Stage 3: Hepa Filter

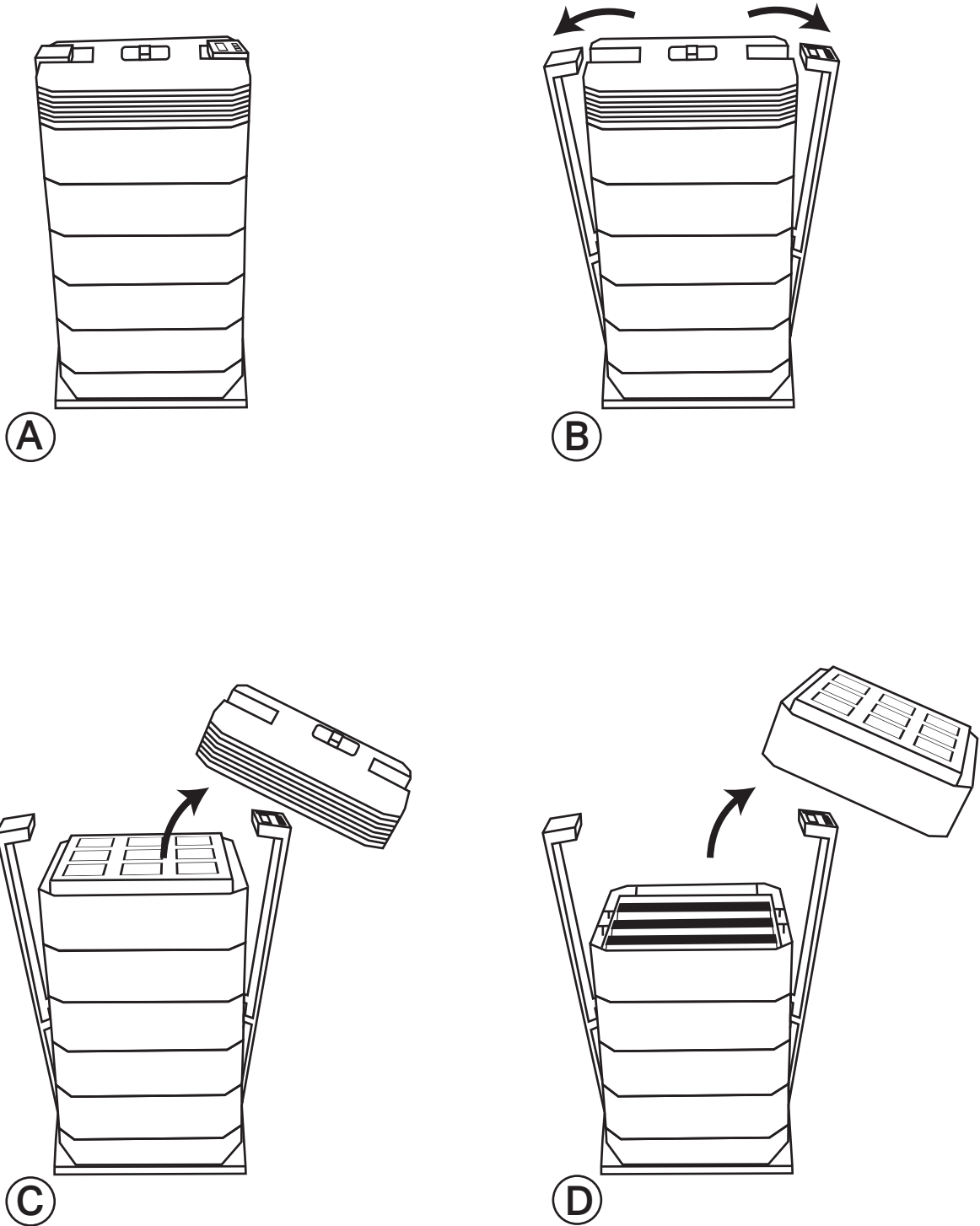
Installation Guide

purellusion[®]

Ultra Premium Filtration™ *Crystalline*



Hepa Filter Module Location



Crystalline Stage 3: Hepa filter

Removing the Hepa Module

purellusion®
Ultra Premium Filtration™ *Crystalline*



Crystalline Stage 3: HEPA Filter Installing into the Hepa Module

purellusion[®]

Ultra Premium Filtration™ *Crystalline*



1. Remove Shrink Wrap



2. Remove Box Sleeve



3. Remove Filter from box and polybag



purellusion[®]

Ultra Premium Filtration™ *Crystalline*



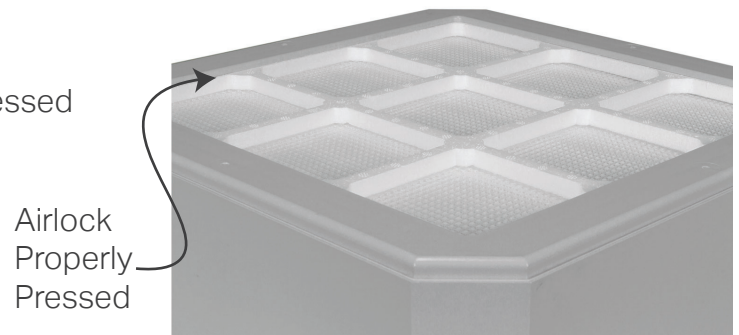
4. Place Crystalline HEPA Filter into the Stage 3 module tray



5. Notice Airlock Ridge on the **bottom** of the module



6. **Press** Airlock Ridge into Crystalline Airlock Channel



7. Verify Airlock Ridge is seated into Airlock Channel

purellusion[®]

Ultra Premium Filtration™ *Crystalline*



6. Place Cover onto Stage 3 module tray



7. Fully Close Cover



8. Crystalline Stage 3: HEPA Filter installation complete.

Crystalline Stages 1-3

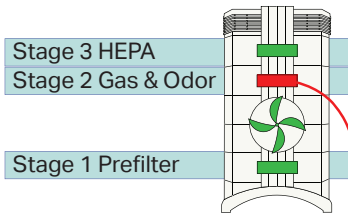
Resetting the
Filter Life Indicators

Reset Guide - Filter Replacement Indicator Lights

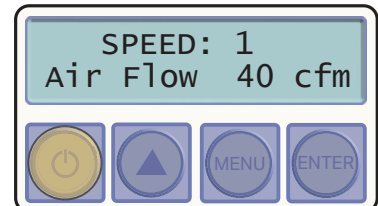
Repeat procedure for each filter replaced

Example Scenarios

- Complete Set: Requires 3 filter indicator reset operations
- Pre Filter + HEPA Filter: Requires 2 filter indicator reset operations
- Gas & Odor Filter: Requires 1 filter indicator reset operation



Press Power



Press Menu (7 Times)



Press and Hold Enter

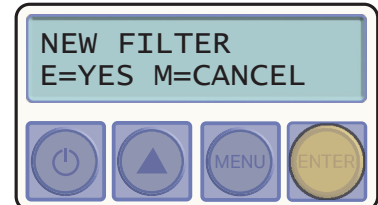


Select the filter being reset

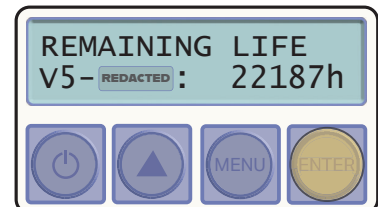
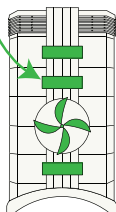
- | | |
|---------------------------|--|
| Stage 1 Pre Filter | Pre REDACTED |
| Stage 2 Gas & Odor Filter | V5- REDACTED |
| Stage 3 HEPA Filter | Hyper REDACTED |



Press Enter



Press Enter again to confirm





Contact Us for Product Support

600 Park Offices Dr
Suite 300 #123
Research Triangle Park, NC

(866) 383-1593

contact@pureillusion.com

<https://www.pureillusion.com>