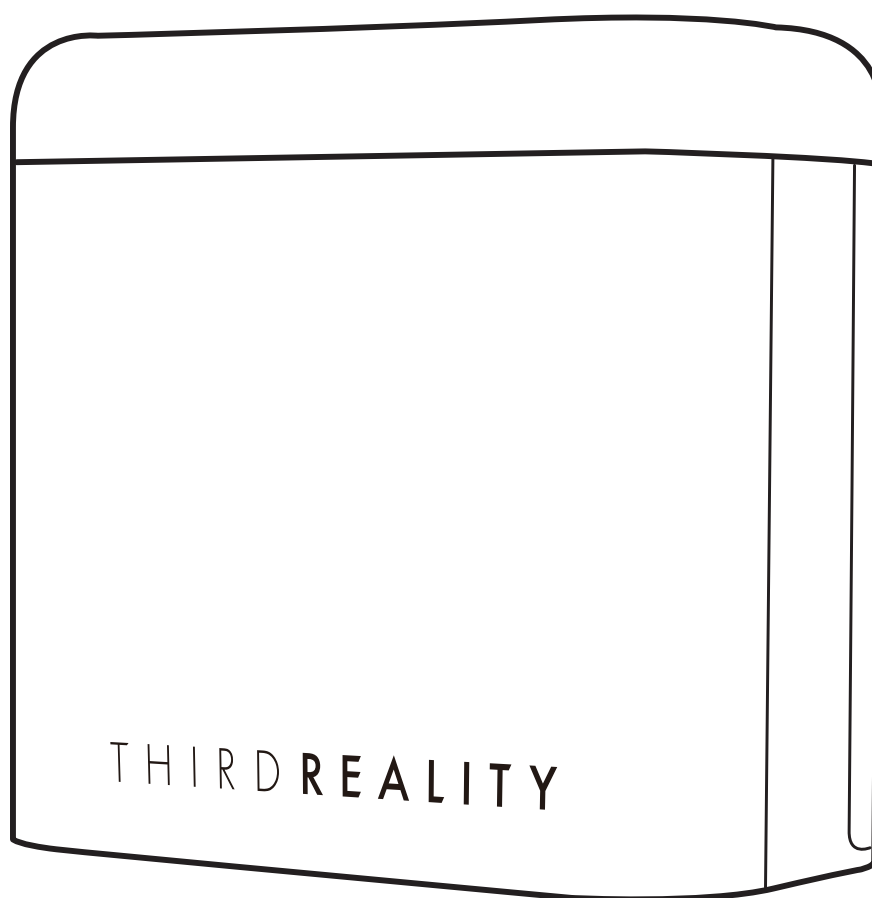


Multi-Function Smart Presence Sensor R3

User Manual



THIRD REALITY

Applicable to version 1.00.27 and above

Contents

Product Description	01
Specifications	01
Button Functions	01
LED Status	02
Setup	04
Placement Recommendations	04
Pairing with 3R-Installer	05
Pairing with Amazon Alexa	07
Pairing with SmartThings	10
Pairing with Home Assistant	14
Pairing with Homey	20
Troubleshooting	23
FCC Regulatory Conformance	24
RF Exposure	25
Limited Warranty	25

Product Description

The Multi-Function Smart Presence Sensor R3 integrates a 60 GHz mmWave human presence sensor, an RGB night light, an illuminance (lux) sensor, and a TVOC air quality sensor. The device is designed for indoor use in smart home and commercial environments, supporting presence detection, environmental data reporting, and automation-based control. It is powered via USB-C, providing a stable power supply for continuous operation.

Specifications

Model	3RPL01084Z
Radar Frequency	62025~63815.3MHz
Wireless Protocol	Zigbee 3.0 & BLE
Power Supply	DC5V / 500mA
Detection Level	6 levels adjustable (1-6m)
Placement	Desktop

Button Functions

Button	Function	Procedure
Level	View Sensitivity Level	Short press once
	Change Sensitivity Level	Press again while the indicator light is on to change the sensitivity level.
Reset	Factory Reset	Press and hold for more than 5 seconds until night light stays red and then release.

LED Status

- **Basic LED Operation Status**

LED Status	Description
Flashing in red.	Factory Reset
Yellow light breathing	Pairing
Warm white light breathing	Pairing success
Yellow light activated once and weak blue light illuminated 3 seconds.	Delete from hub

- **Sensitivity Level**

Level	LED Status
1m	Faint Green
2m	Bright Green
3m	Faint Blue
4m	Bright Blue
5m	Faint Red
6m	Bright Red

- **TVOC Measurement & LED Status**

1. **Before Network Configuration**

Before the device is successfully added to the network, the night light and presence sensor operate via offline behaviors:

When presence is detected, the night light will turn on automatically, and the light color reflects the current TVOC measurement value, indicating air quality.

When no presence is detected, the night light will remain off.

TVOC Measurement Value	LED Status	Air Quality
$0\text{ppb} \leq \text{TVOC} \leq 2000\text{ppb}$	Bright Green	Good
$2000\text{ppb} < \text{TVOC} \leq 4000\text{ppb}$	Bright Yellow	Ventilate
$4000\text{ppb} < \text{TVOC} \leq 6000\text{ppb}$	Bright Orange	Warning
$\text{TVOC} > 6000\text{ppb}$	Red light flashing continuously	Danger

Note: When the sensitivity level light is active, triggering the Presence Sensor will only activate the indicator light after the gear light effect ends.

2. After Network Configuration

After the device is successfully configured and connected to the network, the following behavior applies:

When the TVOC level exceeds 6000 ppb, regardless of the LED's state, the red LED will keep flashing continuously.

When the TVOC level is 6000 ppb or below, the red LED will stop flashing, the lighting behavior will be set as the default color or be controlled through the configured smart home automation system.

Note:

After network configuration successfully, detected and undetected state does not trigger the light ON/OFF. You can control the light's ON/OFF state via automation. When displaying the light corresponding to the sensitivity level, the light will be interrupted if you perform on/off operation from the smart home platform or app.

Setup

1. Use a USB-C-A data cable to power on the device.
2. Press and hold the Reset button for more than 5 seconds until the red light stays on. Release the button, and the device will enter pairing mode. The sensitivity level defaults to 3, with a faint blue light

Note: If the device is not successfully paired within 3 minutes, it will automatically exit pairing mode. To enter pairing mode again, repeat Step 2 to reset the device: press and hold the Down button for more than 5 seconds until the indicator turns red, then release. The device will reset and re-enter pairing mode.

3. Follow the instructions on the corresponding platform to add the device.

Placement Recommendations

For optimal detection performance, please observe the following guidelines:

- Avoid installing the device behind metal objects or thick walls, as these may affect radar performance.
- Keep the sensor away from strong electromagnetic interference sources.
- Ensure the detection area is not obstructed by large furniture or objects.
- When installing multiple radar sensors, avoid positioning their detection surfaces directly facing each other.

Pairing with 3R-Installer App

Device: Smart Bridge MZ1

App: 3R-Installer App

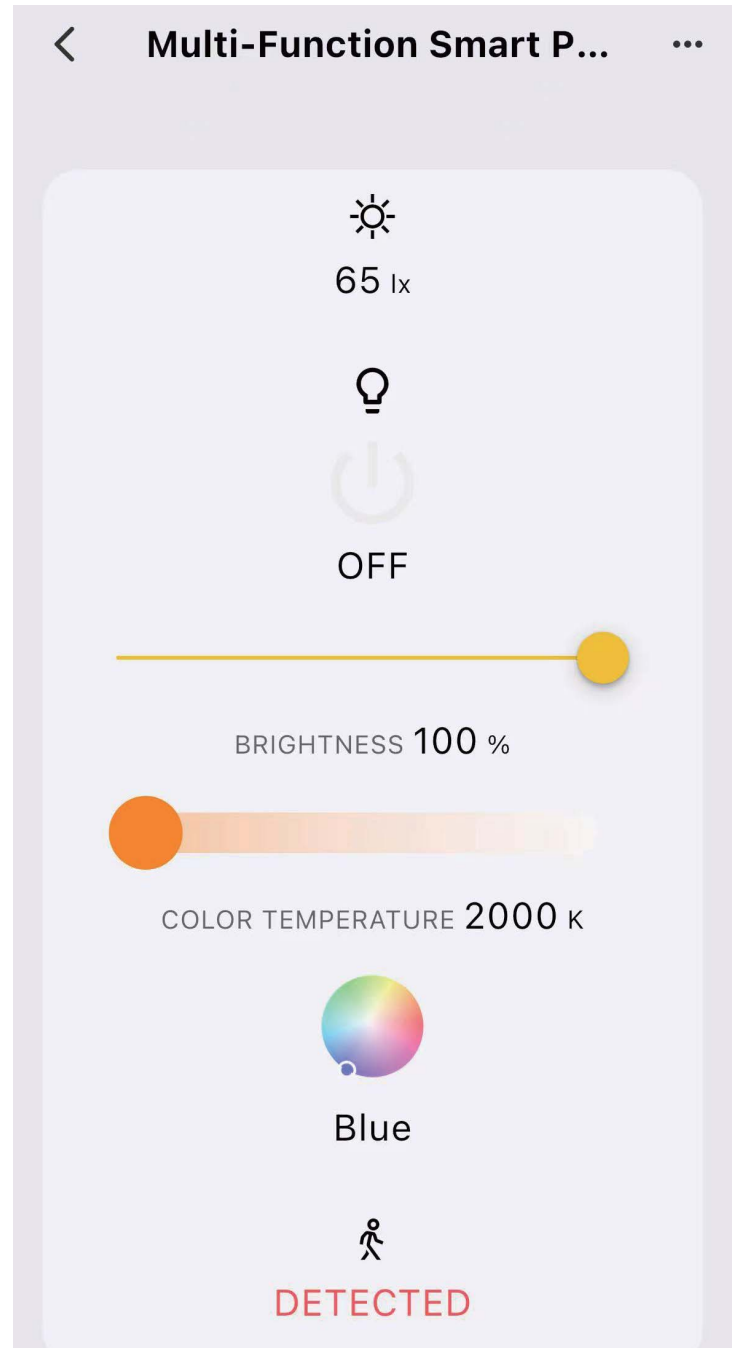
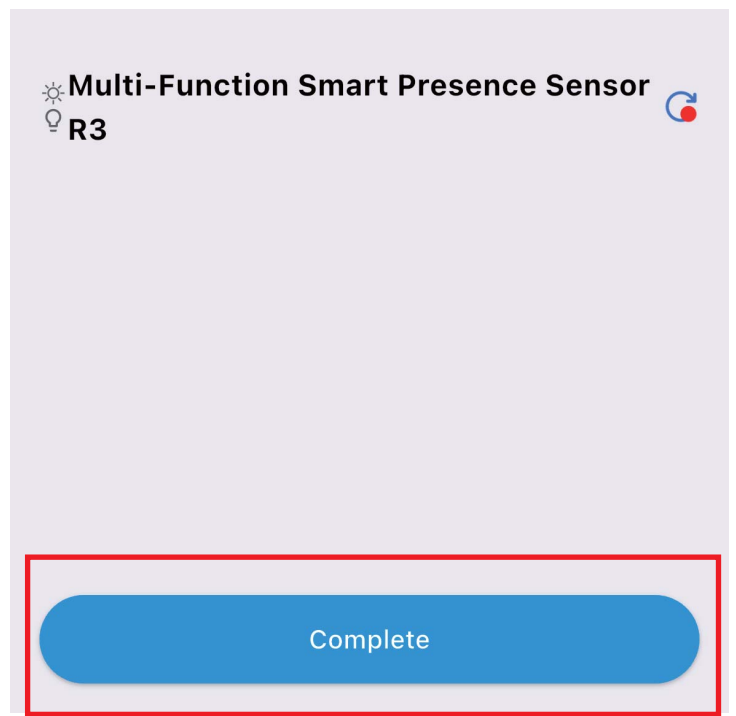
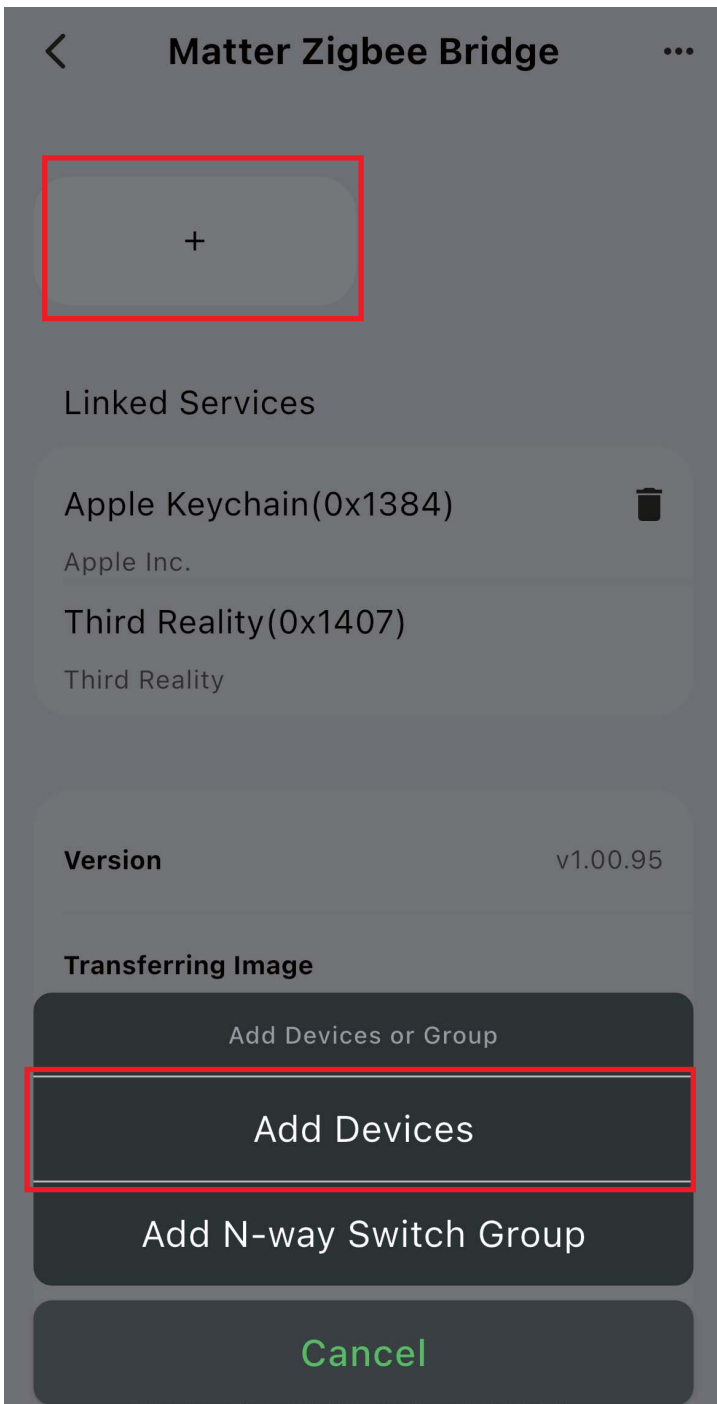


Pairing steps:

1. Open 3R-Installer App, Ensure your bridge is already set up within your smart home system.
2. Press and hold the down button for more than 5 seconds until the red light stays on. Release the button, and the device will enter pairing mode.
3. The sensor will pair with the bridge, and a new device will appear in your smart home app.
4. After the pairing is successful, tap "Complete", then back to main interface.
5. Tap "Muti-Function Smart Presence Sensor R3" icon on device page, you can see the details. Follow the instructions to control Muti-Function Smart Presence Sensor R3.

Supported Devices:

- Motion Sensor
- Illuminance (lux) Detection
- RGB Night Light



Pairing with Amazon Echo

Compatible Device: Echo V4, Echo Plus V1 & V2,
Echo Studio, Echo Show 10 Gen2 & Gen3

App: Amazon Alexa App

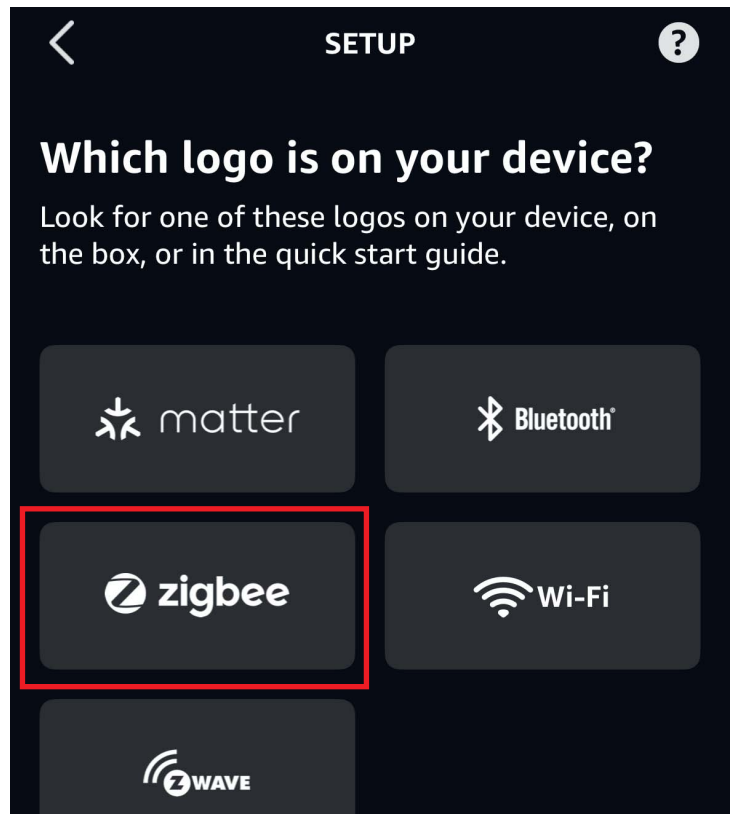
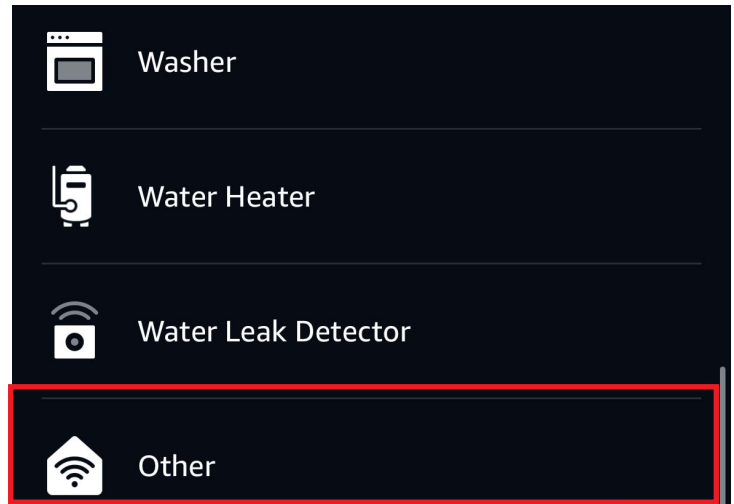
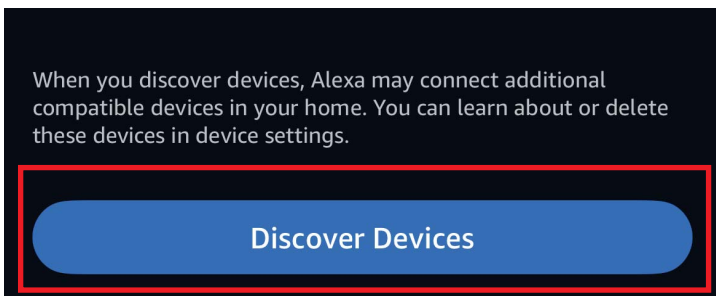
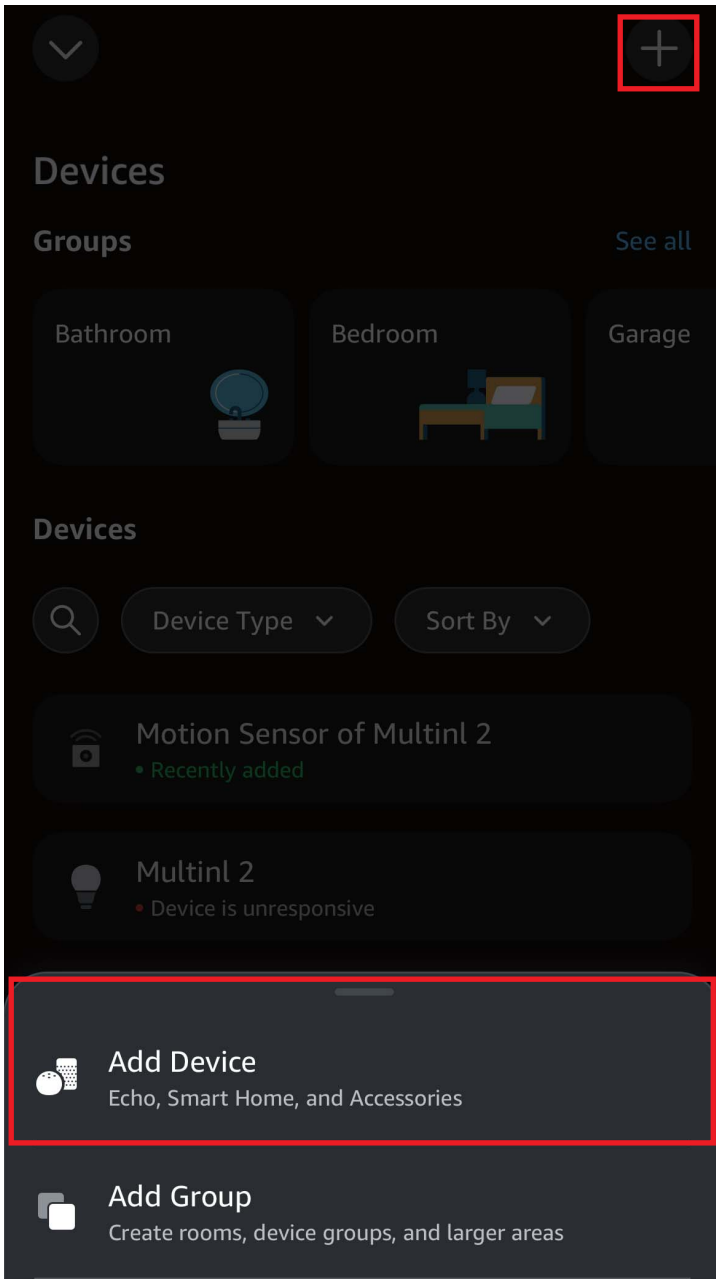


Pairing steps:

1. Make sure the app and the firmware of your Echo devices has been updated to the latest version.
2. Press and hold the down button for more than 5 seconds until the red light stays on. Release the button, and the device will enter pairing mode.
3. Start adding devices by saying "Alexa, discover my devices", or open Alexa App, go to device page, tap "+" on top right, choose "Add Device", then click "other" by sliding down, tap "DISCOVER DEVICES", the sensor will be paired to Alexa within seconds.
4. After the pairing is successful, you can control the sensor by voice and App.

Supported Devices:

- Motion Sensor (support Routines)
- RGB Night Light (support Routines)



1 Other light found and connected

Your light has been added to your Alexa account. Next, we'll help you finish setting up your device.

Next

Devices



Device Type ▾

Sort By ▾



Living room Light

Off



Motion Sensor of Multinl 2



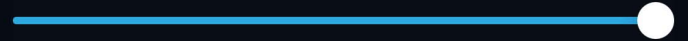
Living room Light



On

Brightness

100%



Color • Blue



Motion detected

Ask Alexa

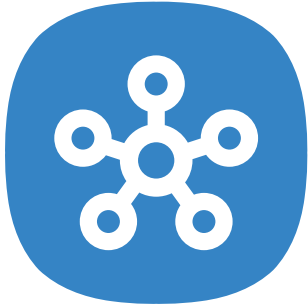


Duration: 4 minutes

Pairing with SmartThings

Compatible Devices: SmartThings Hub 2015 & 2018, Aeotec

App: SmartThings App



Pairing steps:

1. Before pairing, check for updates to make sure the SmartThings Hub firmware is up to date.
2. Add SmartThings drivers for Third Reality Muti-Function Smart Presence Sensor R3
 - Open this link in your PC browser. Log in your SmartThings Account.
<https://bestow-regional.api.smarthings.com/invite/adMKr50EXzj9>
 - Click "Enroll" -- "Available Drivers" -- "Install" to install the device driver.

SmartThings

Channel Information

- Name
Third Reality
- Description
SmartThings driver for Third Reality devices
- [Terms of Service](#)

My Hubs

Aeotec Hub

My home

[Enroll](#)

SmartThings

Channel Information

- Name
Third Reality
- Description
SmartThings driver for Third Reality devices
- [Terms of Service](#)

My Hubs

Aeotec Hub

My home

[Unenroll](#)

[Available Drivers](#)

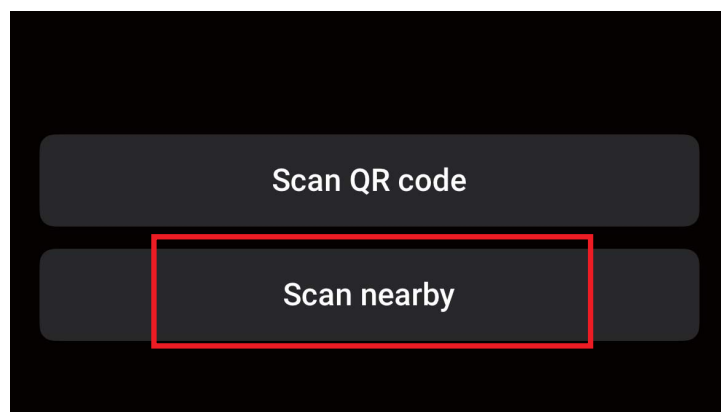
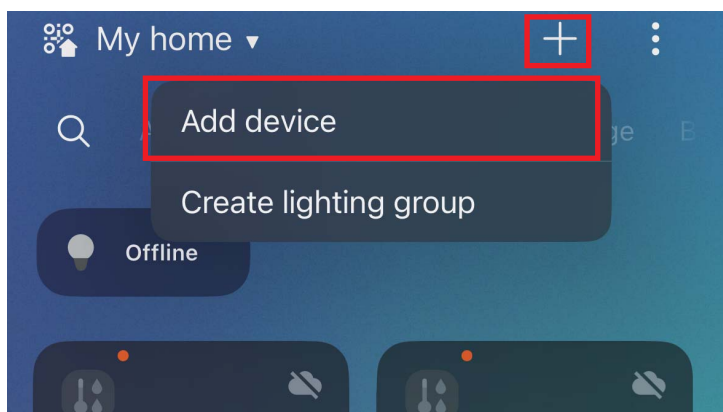
- Name
Zigbee Switch
- Description
SmartThings driver for Zigbee switch devices
- Permissions
 - zigbee: Enable full access to Zigbee actions

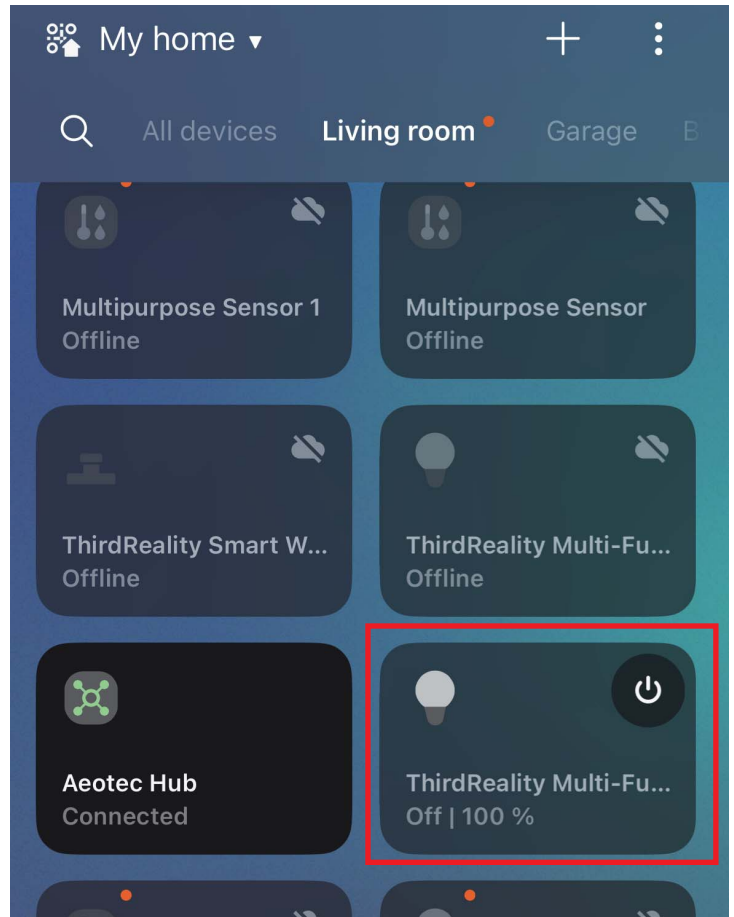
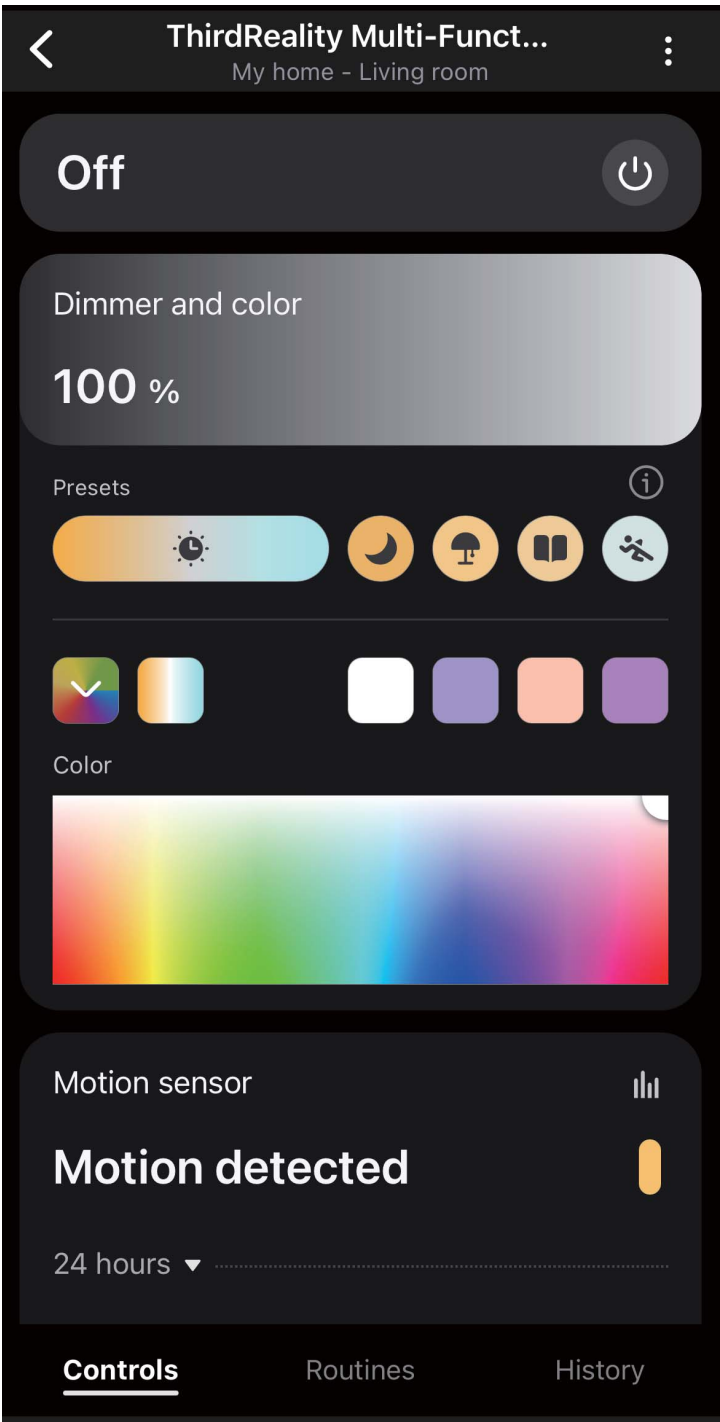
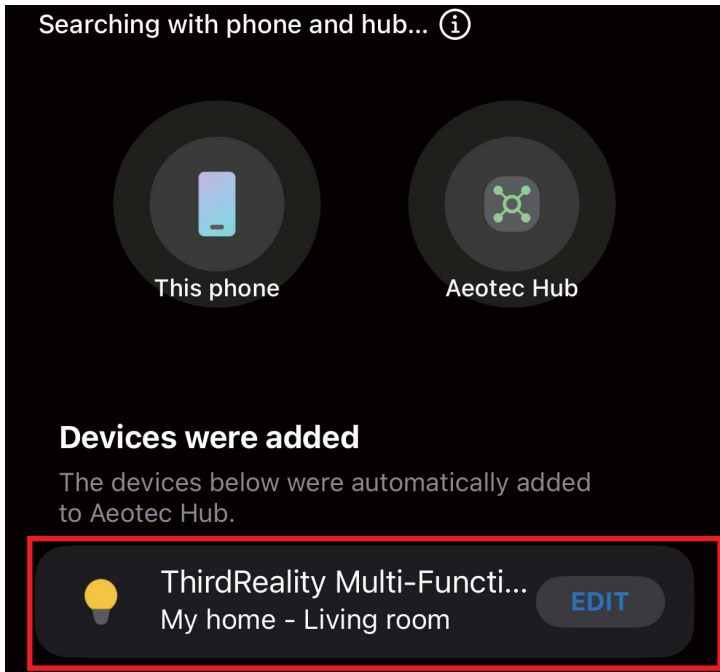
[Install](#)

3. Press and hold the down button for more than 5 seconds until the red light stays on. Release the button, and the device will enter pairing mode.
4. Open your SmartThings App, tap “+” on the up right corner to ”Add device” and then tap “Scan nearby”.
5. The sensor will be added to your SmartThings hub in a few seconds.
6. Create routines to control connected devices.

Supported Devices:

- Motion Sensor (support Routines)
- Illuminance (lux) Sensor (support Routines)
- RGB Night Light (support Routines)





Pairing with Home Assistant

Device: Zigbee dongle



Zigbee Home Automation

1. Press and hold the down button for more than 5 seconds until the red light stays on. Release the button, and the device will enter pairing mode.
2. In Zigbee Home Automation, go to “Configuration” page, click “integration”. Then click the “Devices” on the Zigbee item, then click “Add Devices”.
3. After the pairing is successful, it will be shown as "Third Reality, Inc 3RPL01084Z" on the page.
4. Back to "Devices & Services" page, click the device list under the "Hub Smart Home Controller" button, then you can find the Multi-Function Smart Presence Sensor R3 added before. Click to enter in the control interface to operate the Multi-Function Smart Presence Sensor R3.
5. You can add "Automated Actions" and check device status on the "Device" page.

Supported Devices:

- Motion Sensor (support Routines)
- Illuminance (lux) sensor (support Routines)
- RGB Night Light (support Routines)
- TVOC Air Quality Sensor (support Routines)

Manual Script Addition Guide:

1. Install the Samba Share add-on in Home Assistant: Open the Home Assistant homepage, click "Settings" → "Add-ons" → "Samba share" → "ADD-ON STORE" → search "Samba" → click "Samba share" → click "START".

If you cannot find the samba share, please click the Personal Information page to check if advanced settings are enabled.

2. Open the folder and enter the IP address of the Home assistant. You need to enter your account and password(Account password in Samba share configuration).

3. Afterwards, enter the "config" file and create a new file to store the script.

Please download the relevant scripts (.py format) from Github:

[https://github.com/thirdreality/homeassistant/tree/main/ZHA\(quirks%20v2\)](https://github.com/thirdreality/homeassistant/tree/main/ZHA(quirks%20v2))

Enter "configuration.yaml" file, add the following two lines of code,

4. and the path will be the location where you store the plug script.

```
enable_quirks: true
```

```
custom_quirks_path:/config/zha_quirks/
```

- Restart Home Assistant to apply the configuration changes.
- After each script is released, it needs to be reloaded

Home Assistant Settings

- 1 repair
 - Bluetooth adapter requires system power cycle
- 3 updates
 - Home Assistant Core
 - Matter Server
 - Samba share
- Home Assistant Cloud
- Devices & services**
- Automations & scenes
- Areas, labels & zones
- Apps
- Dashboards
- Voice assistants

Matter, Zigbee, Bluetooth

Discovered

- cast
- ibeacon
- SLZB-06
- SLZB-06
- Temperature/Humidity Sensor 39A2
- thread
- UPnP

Configured

- Backup logging enabled
- Bluetooth
- Google
- Raspberry Pi Power Supply
- Sun
- Zigbee
- Matter
- Mobile Apps
- Radio Browser

Select brand

- 7 discovered devices
- Add Matter device
- Add Zigbee device**
- 1-Wire
- 3 Day Blinds
- 177TRACK
- A. O. Smith

Searching for Zigbee devices...

Initialization complete
The device is ready to use

3RPL01084Z
by Third Reality, Inc

Change device name
Third Reality, Inc 3RPL01084Z

Area

Home Assistant

Integrations **Devices** Entities Helpers

Filter Search 3 devices

Device	Area	Integration	Manufacturer	Model	Battery
2 EB02	JY	Zigbee Home Automation	Third Reality, Inc	SRPL01084Z	-
Texas Instruments CC2552	-	Zigbee Home Automation	Texas Instruments	CC2552	-
Third Reality, Inc SRPL01084Z	-	Zigbee Home Automation	Third Reality, Inc	SRPL01084Z	-

Settings Notifications

+ Add device

Home Assistant ← Third Reality, Inc SRPL01084Z

Overview

Energy

Activity

History

File editor

Matter Server

Media

SONOFF Dongle Flasher

Terminal

Settings Notifications

Device info

SRPL01084Z
by Third Reality, Inc

Connected via [Texas Instruments CC2552](#)

Firmware: 0x00000014

Zigbee: 7C:3E:82:D7:66:60:00:00

Zigbee info

- Zigbee Home Automation
- Reconfigure

Controls

Third Reality, Inc SRPL010...

Add to dashboard

Activity

March 16, 2026

Third Reality, Inc SRPL01084Z turned off triggered by action Light: Turn off 11:35:00 AM - Now - on

Third Reality, Inc SRPL01084Z turned on 11:35:00 AM - Now - on

Firmware turned on 11:30:46 AM - 4 minutes ago

Automations

No automations have been added using this device yet. You can add one by pressing the + button above.

Scenes

No scenes have been added using this device yet. You can add one by pressing the + button above.

Scripts

No scripts have been added using this device yet. You can add one by pressing the + button above.

Sensors

- Illuminance 56 lx
- Motion Detected
- Total volatile organic com... 0.0 ppb

Add to dashboard

Configuration

- Air threshold
- Firmware Update available
- Located at level
- On/Off Gradu... 0
- Presence sen...
- Start color tem... 65535
- Start-up curre...
- TVOC sensor calibration Press
- 高级行为 PreviousValue

Add to dashboard

Diagnostic



Zigbee2MQTT

1. Press and hold the down button for more than 5 seconds until the red light stays on. Release the button, and the device will enter pairing mode.
2. Permit join to start Zigbee pairing in Zigbee2MQTT.
3. After the pairing is successful, it will be shown as "Third Reality, Inc 3RPL01084Z" on the page.
4. Back to "Devices & Services" page, click the device list under the "Hub Smart Home Controller" button, then you can find the Multi-Function Smart Presence Sensor R3 added before. Click to enter in the control interface to operate the Multi-Function Smart Presence Sensor R3.
5. You can add "Automated Actions" and check device status on the "Device" page.

Supported Devices:

- Motion Sensor (support Routines)
- Illuminance (lux) sensor (support Routines)
- RGB Night Light (support Routines)
- TVOC Air Quality Sensor (support Routines)

Pairing with Homey

Device: Zigbee dongle



Pairing steps:

1. Install the Third Reality App in your Homey App.
2. Press and hold the down button for more than 5 seconds until the red light stays on. Release the button, and the device will enter pairing mode.
3. Tap "+" in the Devices, tap → "New Device" → "Third Reality" → "Muti-Function Smart Presence Sensor R3" → "Connect" and follow the instruction to add device.
4. After the pairing is successful, you can see details and create routines on the "Device" page.

Supported Devices:

- Motion Sensor (support Routines)
- Illuminance (lux) sensor (support Routines)
- RGB Night Light (support Routines)

Troubleshooting

- 1. Detection range or sensitivity is not suitable**
Adjust the detection level with the button and change the installation angle.
- 2. Light turns on at night before pairing, but not after pairing**
Before pairing, the device uses built-in local automation. After pairing, set automation in the platform/app.

FCC Regulatory Conformance

This device complies with part 15 of the FCC rules. Operation is subject to the following two conditions: (1) this device may not cause harmful interference, and (2) this device must accept any interference received, including interference that may cause undesired operation.

Changes or modifications not expressly approved by the party responsible for compliance could void the user's authority to operate the equipment.

NOTE: This equipment has been tested and found to comply with the limits for a Class B digital device, pursuant to part 15 of the FCC Rules. These limits are designed to provide reasonable protection against harmful interference in a residential installation.

This equipment generates uses and can radiate radio frequency energy and, if not installed and used in accordance with the instructions, may cause harmful interference to radio communications. However, there is no guarantee that interference will not occur in a particular installation. If this equipment does cause harmful interference to radio or television reception, which can be determined by turning the equipment off and on, the user is encouraged to try to correct the interference by one or more of the following measures:

- Reorient or relocate the receiving antenna.
- Increase the separation between the equipment and receiver.
- Connect the equipment into an outlet on a circuit different from that to which the receiver is connected.
- Consult the dealer or an experienced radio/TV technician for help important announcement.

RF Exposure

This equipment complies with FCC radiation exposure limits set forth for an uncontrolled environment.

This equipment should be installed and operated with minimum distance 20cm between the radiator and your body.

This transmitter must not be co-located or operating in conjunction with any other antenna or transmitter.

Limited Warranty

For limited warranty, please visit

<https://thirdreality.com/faq-help-center/>

For customer support, please contact us at info@3reality.com or visit www.thirdreality.com

For questions on other platforms, visit the corresponding platform's application/support platform.