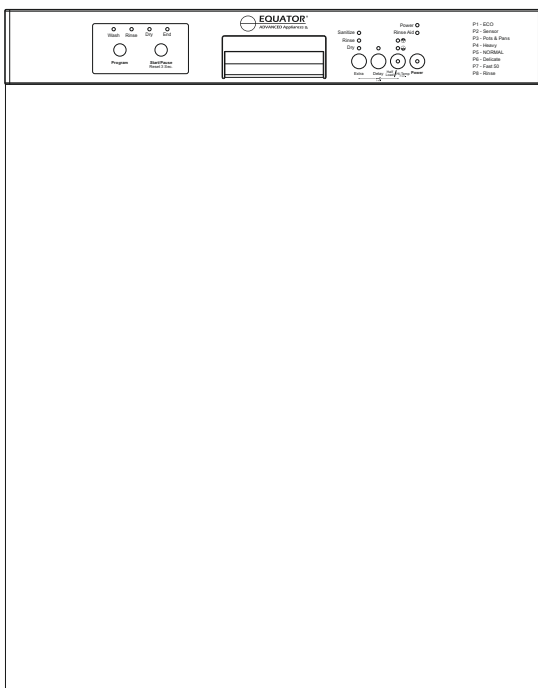




DISHWASHER

Model - WB / BB / SB 82



OWNER'S MANUAL

Read the instructions carefully and keep for future reference

Warranty

Equator Appliances undertakes to the consumer-owner to repair or, at our option, to replace any part of this product which proves to be defective in workmanship or material under normal personal, family or household use, in USA and Canada, for a period of one year from the date of original purchase. During this period, we will provide all labor and parts necessary to correct such defect, free of charge, if the appliance has been assembled and operated in accordance with the written instructions with the appliance.

Exclusions

In no event shall Equator Appliances be liable for incidental or consequential damages or for damages resulting from external causes such as abuse, misuse, incorrect voltage or acts of God. This warranty does not cover service calls which do not involve defective workmanship or materials covered by this warranty. Accordingly, diagnosis and repair costs for a service call which does not involve defective workmanship or materials will be the responsibility of the consumer-owner.

Specifically, the following work is not covered under warranty and does not constitute warranty work:

Installation - e.g. Incorrect height of drain hose

Maintenance - e.g. Failure to clean filters or spray arms

Mishandling - e.g. Breakage of racks and basket

Most work is covered. The defining factor is, has the machine malfunctioned (Equator Appliances is responsible) or has the customer omitted or done something to cause the appliance to malfunction (customer is responsible). Some States do not allow the exclusion or limitation of incidental or consequential damages, so the above limitation or exclusion may not apply to you.

WARRANTY SERVICE

This warranty is given by:

Equator Appliances

10216 Georgibelle Drive, Suite 900D
Houston, Texas 77043-5249

For Customer Service:

Appliance Desk

Phone/Text: 1-800-776-3538

Email: service@ApplianceDesk.com

Web: www.ApplianceDesk.com

Business hours: 9:00 am to 5:00 pm weekdays

You can register your Warranty by any of the following methods:

1. Mail in the Warranty Registration Card
2. Register online at www.ApplianceDesk.com
3. Scan the QR Code



GENERAL

Since it is a responsibility of the consumer-owner to establish the warranty period by verifying the original purchase date, Equator Appliances recommends that a receipt, delivery slip or some other appropriate payment record be kept for that purpose.

This warranty gives you specific legal rights, and you may also have other rights which vary from State to State.

All rights reserved. Manual subject to change without notice.

Safety

Do not store or use flammable liquids or vapors near the dishwasher.

Under certain conditions, hydrogen gas may be produced in a hot water system that has not been used for two weeks or more. HYDROGEN GAS IS EXPLOSIVE. If the hot-water system has not been used for a long period, before using the dishwasher turn on all hot-water faucets and let the water flow from each for several minutes. This will release any accumulated hydrogen gas. As the gas is flammable, do not smoke or use an open flame.

Use only detergents recommended for use in dishwashers and keep detergents out of reach of children.

Do not touch the heating element.

Do not sit or stand on the dishwasher racks or door.

Ensure that the dishwasher door does not remain in an open position, to prevent accidents from happening.

When positioning the appliance, ensure the electrical cord is not tangled or damaged.

Do not place multiple portable socket-outlets at the rear of the appliance.

Never unplug the appliance by pulling on the power cord. Grip the plug firmly and pull straight out to remove from wall socket.

Do not use a damaged power cord and do not modify the plug.

Do not use an extension cord.

Children should be supervised to ensure that they do not climb on or play with the appliance. Discard packaging material and keep out of reach of children.

This appliance is not intended for use by persons (including children) with reduced physical, sensory or mental capabilities, or lack of experience and knowledge, unless they have been given supervision or instruction.

Installation

Installation of the dishwasher should be done by a qualified technician.

Place the dishwasher in an area where it will not be exposed to the weather and to freezing temperatures and away from sources of heat and high humidity.

Place the Dishwasher on a flat level surface.

Disconnect the power supply before installing the dishwasher.

Only connect the dishwasher to the power supply when all installation and plumbing work is complete.

Never connect the ground wire to gas lines, hot water pipes or plumbing lines.

The dishwasher must be grounded.

Connect to a properly rated, protected, and sized power supply circuit to avoid electrical overload. The dishwasher is designed for an electrical supply of 120V, 60Hz, AC, connected to a dishwasher-dedicated, properly grounded electrical circuit with a fuse or breakers rated for 15 amperes. Electrical supply conductors must be a minimum of #16 AWG copper wire rated at 167°F (75°C) or higher.

Plug the power cord into an outlet that is installed and grounded in accordance with local codes.

Check the plug and cable before you connect the power and make sure it is the correct 110 voltage.

Dishwasher must be secured to adjacent cabinetry using the brackets provided.

To ensure that the dishwasher has been correctly installed, check for water leaks during and after the first use.

Preparation and Operation

Do not operate the dishwasher unless all enclosure panels are properly in place.

Generally, the dishwasher is designed for cups and glasses on the top rack; plates and pots on the bottom rack; and long serving utensils on the very top rack.

When loading the dishwasher:

- Place sharp items so that they do not damage the door or seal.
- Place knives in the silverware basket with handles up to prevent risk of injury.
- Ensure that items do not protrude below the racks or silverware basket.
- Do not wash plastic items in the dishwasher unless they are marked “Dishwasher Safe”.

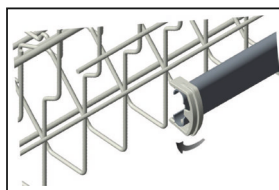
Tines in the top and bottom racks can be raised or lowered depending on the items to be placed, thereby providing maximum flexibility. The silverware basket can also be moved from its usual spot to adjust the space in the bottom rack.

The top rack is designed to be positioned at two levels. You can adjust the height of the rack by moving it on either the upper rail or the lower rail.

Hold the top rack on the sides and lift up slightly and then push down to the desired height. Ensure that the rack locks in place.

Ensure that the Upper and Lower Spray Arms can spin freely without hitting obstructions.

Push the racks all the way in, ensuring the blue End Clips on the rails are locked.



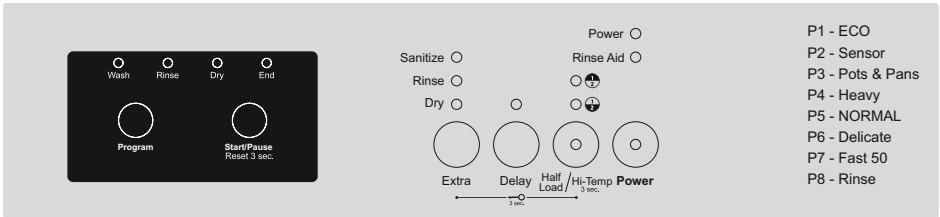
End Clip

Add dishwasher detergent into the bigger dispenser.
(Note: detergent pods may not dissolve completely in short wash cycles).

Add rinse aid into the smaller dispenser. This needs to be done only periodically and not before every wash cycle. The rinse aid indicator light will come on when the level is low and should be refilled soon.

Close the dispensers and then the door firmly until it clicks.

Setting the Wash Programs



Press the **Power Button** located at the far right on the Control Panel.

Select the Wash Program by pressing the **Program Button** on the left side of the Control Panel. Once selected, the Program number (e.g. P1, P2) flashes on the Display Panel and also the number of minutes for the cycle.

The Wash Programs/Cycles are listed in the table:

Program	Program / Cycle	Temperature		Minutes*
		°F	°C	
P1	ECO	131	55	122-145
P2	Sensor	149	65	110-155
P3	Pots & Pans	149	65	165
P4	Heavy	149	65	130
P5	NORMAL	140	60	117
P6	Delicate	113	45	90
P7	Fast 50	122	50	50
P8	Rinse	-	-	15

* This is the duration of the Program, with no options selected

Program Selection Information

In addition to referring to the Program table, the following descriptions of each of the Programs will be useful in determining which cycle to use.

P1 - ECO: Use for normally soiled dishes. Program uses less electricity and water.

P2 - Sensor: Use to auto adjust time, temperature, water quantity and energy consumption.

P3 - Pots & Pans: Use for heavily soiled pots, pans and dishes with dried on debris.

P4 - Heavy: Use for heavily soiled dishes.

P5 - NORMAL: Use for normally soiled dishes.

P6 - Delicate: Use for lightly soiled and fragile dishes and crystal.

P7 - Fast 50: Use for a 50-minute fast wash for normally soiled dishes.

P8 - Rinse: Use to rinse only without detergent.

Sensor Programs

P1 ECO & P2 Sensor Programs automatically adjust the cycle duration according to the soil level of the dishes. The programs start with the specified maximum time (145 for ECO, 155 for Sensor). During the operation, the sensor measures the soil level of the dishes, and adjusts the time automatically depending on how much cleaning is needed. Water quantity and temperatures are also adjusted

Review the options in the middle of the Control Panel to select additional functions.

Extra Button – You may select:

- Sanitize – increases the water temperature in the final rinse.
- Rinse – adds an extra rinse to the selected wash cycle.
- Dry – increases water temperature.

Delay Button – You can delay the start of the program. Pressing this button will add time in one-hour increments. To cancel Delay, open the dishwasher, then press and hold the Start button for 3 seconds.

Half Load/Hi-Temp Button – Press this button to select half load and high temperature functions.

For Half Load, you can select Upper Basket, Lower Basket or both Baskets. The red LED light will show your selection.

For Hi-Temp function, press and hold down this button for 3 seconds. This will increase the water temperature and the wash cycle time.

Start/Pause Button

After the wash cycle and all optional functions are selected, press the Start button to begin the wash cycle. As the programmed cycle progresses, the LED indicator lights will show on the panel at each stage: wash, rinse and dry.

During a wash cycle, the Display Panel will show the time remaining in the cycle. If you press and hold down the Start/Pause button for 3 seconds, the program will cancel and stop.

If you open the dishwasher door while the program is running, the machine will stop. If you close the door within 4 seconds, the program will continue running automatically. If longer than 4 seconds, press the Start button to resume the program.

Child Lock

To prevent children from playing with or operating the machine, you can activate Child Lock by pressing and holding Extra and Half Load buttons simultaneously for 3 seconds. “CL” will be displayed. To deactivate Child Lock, repeat the same instructions.

End of Program

When the wash program is completed, the display will show that the cycle has ended. Press the On/Off button to turn off the dishwasher.

Removing items after cycle is complete:

- Do not remove dishes from the dishwasher until the program is complete.
- Be careful of hot steam when opening the dishwasher after a wash cycle.
- Check that the detergent dispenser is empty after the program is complete.

It is recommended that the lower rack is unloaded first and then the upper rack. This will prevent water from dripping from upper rack to lower rack and getting dishes wet.

Maintenance

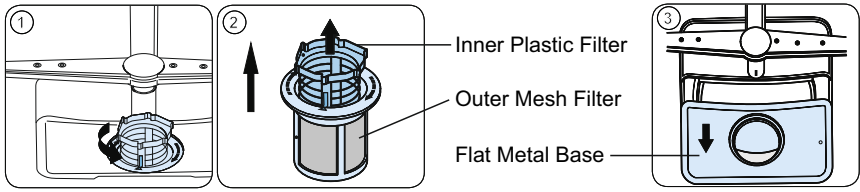
Ensure the power cord is unplugged before moving or cleaning the back of the appliance.

Clean the outside and inside of the appliance regularly, using water and mild detergent.

Maintaining the inside of the dishwasher includes periodic cleaning of the filter and the two spray arms.

Note: A small amount of residual water may remain at the base of the filter. This is normal.

Clean the filter at the base of the dishwasher regularly:



- Turn the Inner Plastic Filter counter-clockwise and remove it along with the Outer Mesh Filter.
- Discard any food and debris that may have collected and rinse with water.
- Lift out the Flat Metal Base and rinse with water.
- Replace all these parts securely.

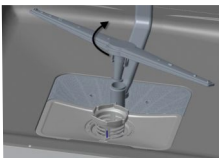
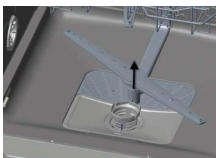
Clean the Spray Arms regularly.

Lower Spray Arm:

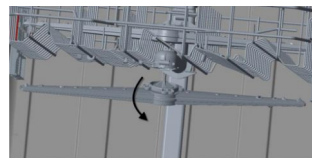
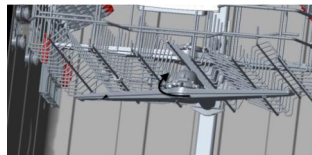
- Remove the Lower Spray Arm by simply lifting it up.
- Rinse under water to ensure smooth flow/spray from the holes.
- Replace the Spray Arm, ensuring that it snaps back in place firmly.

Upper Spray Arm:

- Turn the nut at the connecting point of the Spray Arm to release it.
- Slide the Spray Arm off and rinse under water to ensure smooth flow/spray from the holes.
- Replace the Spray Arm, ensuring that it clicks into place and the nut is tightened.



Lower Spray Arm



Upper Spray Arm

Troubleshooting

Problem	Possible Cause and Solution
Program doesn't start	Check the fuse. Check if it is plugged in correctly to the power source. Ensure the water inlet tap is turned on and hoses are not clogged. Check that the door is completely closed. Switch the dishwasher on by pressing Power button.
Machine stops during wash cycle	Power failure. Water supply failure.
Water remains inside the dishwasher	Check if the drain hose is clogged or twisted. Ensure the filters are clean and not clogged. If the cycle has not finished wait for it to end.
Shaking & hitting sounds during wash cycle	Rotating spray arm is hitting obstructing items in the upper or lower basket. Open the dishwasher, remove or rearrange items, then close the door quickly and resume the cycle.
Dishes are not being properly cleaned.	Items are not placed correctly. Not enough detergent is being used. Correct wash program is not being used. Spray arms are clogged, not allowing water to be sprayed. Check that filters and drain hose are correctly fitted.

Error Codes

If the following Error Codes are displayed, first check the Troubleshooting Guide and contact Customer Service to resolve problems.

DIAGNOSTIC MENU			
Error Code	Description	Related Faulty Component	Part #
FE	Faulty electronic board	Electronic Board	82211
FF	Water inlet system failure Check if water is flowing into machine	Water inlet valve Water inlet hose	82140 82141
F1	Overflow - Unplug machine and close water supply	Floater Connection Points	82170
F2	Water not being discharged Stop program and check if filters or hose are clogged	Drain hose Drain pump	82125 82176
F3	Continuous water input - Close tap	Water inlet valve	82140
F4	Flow meter failure	Flow meter	82130
F5	Pressure system failure	Circulation pump Floater	82177 82170
F6	Faulty heater sensor	Heater sensor	82076
F7	Overheating	Heater Heater sensor	82173 82076
F8	Heater error	Heater Heater sensor	82173 82076
F9	Diverter mechanism failure that directs water flow to spray arms.	Diverter motor assembly	82197
HI	High voltage failure	Power cord	82172

Technical Specifications

Model	WB / BB / SB - 82
Load Capacity	14 place setting
Electrical	120V 60Hz 12A
Heater Power	1100 W
Rated Power	1400 W
Water Pressure	43.5 - 145psi
Water Consumption	4 Gallons
Weight Net / Gross	86 / 90.4 lbs
Product Dimensions (HxWxD)	32.3 x 23.5 x 22.4 (inch)
Packaging Dimensions (HxWxD)	33.5 x 25.4 x 25 (inch)

California Proposition 65

WARNING: This product contains chemical known to the State of California to cause cancer and birth defects or other reproductive harm.

Safe Disposal

Before discarding the dishwasher, remove the door in order to prevent risk of child entrapment.

Please dispose of this appliance in accordance with local regulations.

