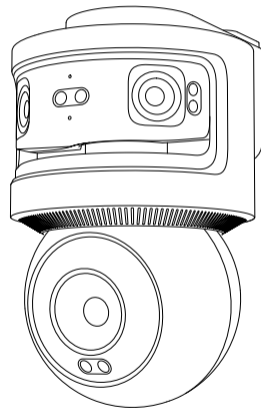


REOLINK TECHNOLOGY PTE. LTD.  
31 KAKI BUKIT ROAD 3, #06-02, TECHLINK, SINGAPORE 417818

# Reolink

## OMVI 3i PoE

Operational Instructions



58.03.010.0034



Item No. : P931



# Contents

01	What's in the Box	02
02	Device Overview	03
03	Initial Setup	05
04	Installation Tips	11
05	Install the Camera	13
06	Specifications	22
07	Important Safety Instructions	22
08	Troubleshooting	23
09	Legal Disclaimer	26
10	Notification of Compliance	27

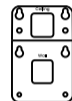
## 01 What's in the Box



Camera



Mounting Bracket



Mounting Template



1m Ethernet Cable



Pack of Screws



Waterproof Lid



Surveillance Sticker



Operational Instructions

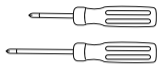


### NOTE:

The mount is compatible with the C-type mounting hole pattern on the Reolink D20 and the RLA-JBL1 junction boxes. (Not included)

## What You Also Need

*\*Not Included*



#1 & #2 PH Screwdrivers



Power Drill

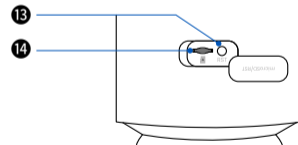
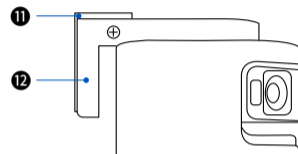
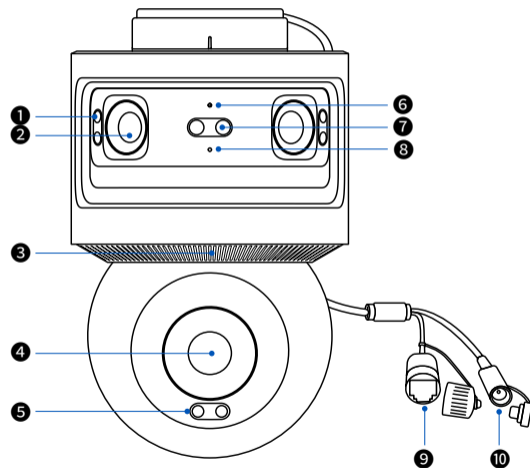


Ladder  
(If Necessary)

## 02 Device Overview

- 1 5 7 Infrared Light/Spotlight
- 2 4 Lens
- 3 Speaker
- 6 Status LED
- 8 Microphone
- 9 PoE Port

- 10 Power Port
- 11 Mounting Bracket
- 12 Mounting Base
- 13 Reset Button
- 14 microSD Card Slot



## 03 Initial Setup

### Step 1. Download the Reolink App or Client

#### • On Smartphone



#### • On PC

Download the Reolink Client: Go to > Support > Download Center > App & Client.



#### NOTE:

To connect the camera to a Reolink PoE NVR, use the NVR interface for setup.

### Step 2. Power on the Camera

1. Connect the camera to a PoE injector with an Ethernet cable.
2. Power on the PoE injector and connect it to your router.

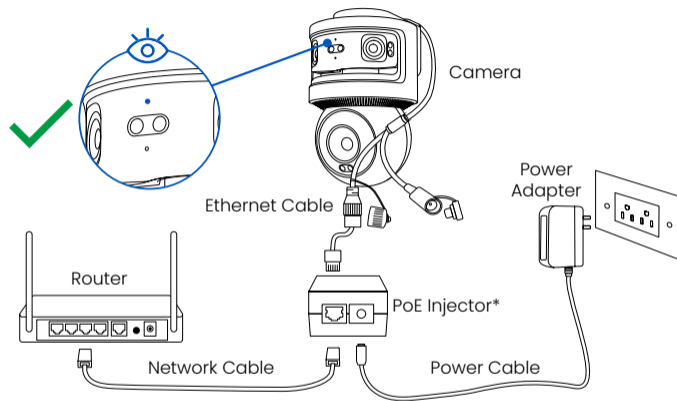


#### NOTE:

After powering on, the status light will turn blue and flash.

#### Light Status Indicators:

- **Solid Blue:** Power on and the network connection succeeded.
- **Flashing Blue:**
  - A. The device is powering on and initializing.
  - B. The device has completed initialization but a network error is detected.
- **No Light:** No power.

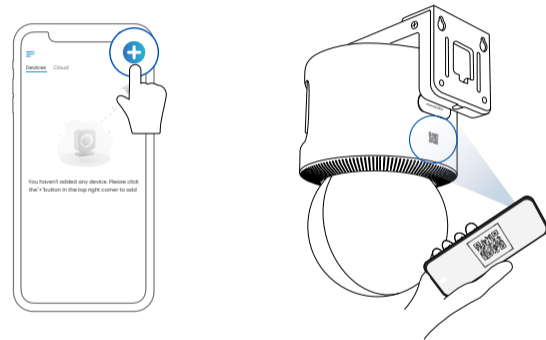


**NOTE:**

The camera can be powered via a PoE switch, a PoE injector, a 12V/2A DC adapter, or a Reolink PoE NVR. (Sold separately)

### Step 3. Initialize the Camera

Tap the "+" button in the top corner, scan the camera's QR code, and follow the on-screen instructions to complete the setup.

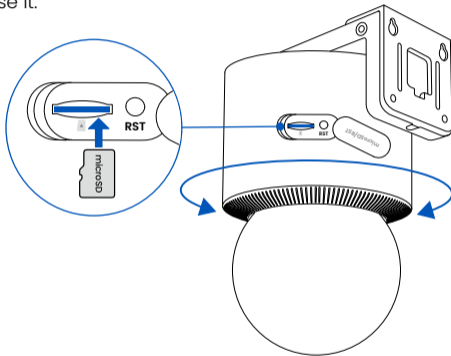


**NOTE:**

After the initialization, the status light will change from blinking blue to a solid blue.

## Step 4. Insert the microSD Card (Optional)

Rotate the mounting base to access the microSD slot. Open the cover, insert the card (not included), and close it.

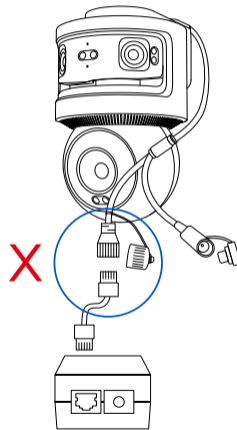


### NOTE:

It is recommended to use a Class 10, 512GB microSD card for video storage.

## Step 5. Disconnect the Ethernet Cable Before Installation

For easier installation, it is recommended to disconnect the camera's Ethernet cable before starting. Reconnect them according to the instructions during installation.



# 04 Installation Tips

## Tip 1. Proper Mounting Locations



For optimal image quality, ensure consistent lighting for both the camera and subject.



- Do not point the camera directly at light sources.



- Do not point the camera at windows\*.

*\* Pointing cameras at windows may cause glare from infrared LEDs, status lights, or ambient lights.*



- Do not place the camera in a shaded area; point it towards a well-lit space.

## Tip 2. Water and Dust Resistance



- Avoid exposing the LAN port and power port to water or moisture.



- Keep the LAN port and power port free from dirt and debris.

## Tip 3. Regular Cleaning



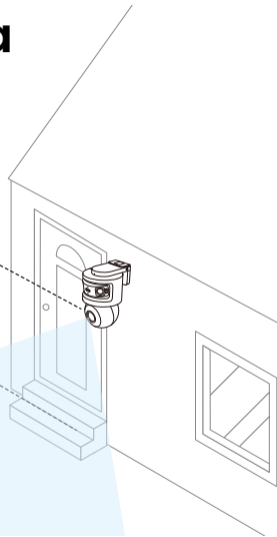
- Periodically clean the lens with a soft cloth.

# 05 Install the Camera

## Step 1. Choose a Mounting Location

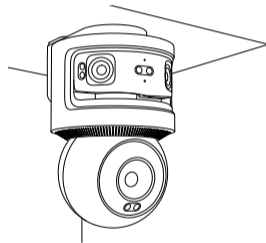
Recommended height: 2.5–3.5 m (8–11 ft)

Height of 2.5m~3.5m  
(8 ft to 11ft)



### Mounting options

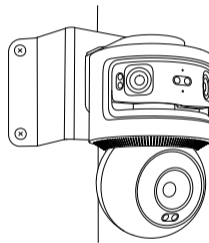
#### Ceiling Mounting



#### Wall Mounting



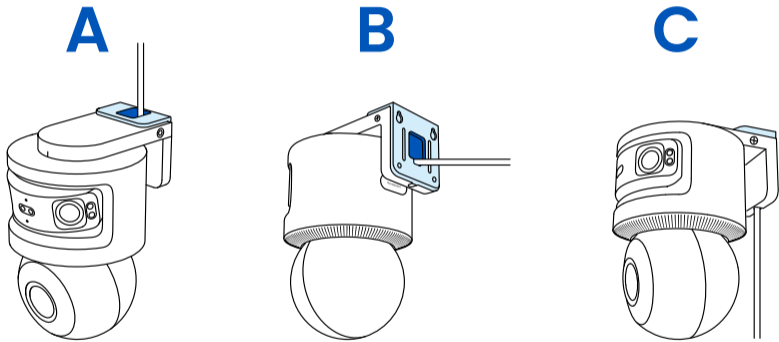
#### Corner Mounting



#### NOTE:

The corner bracket needs to be purchased separately.

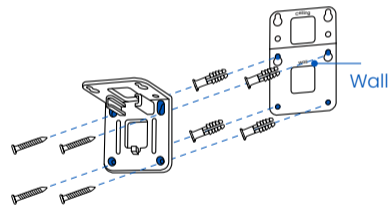
## Cable Routing Methods



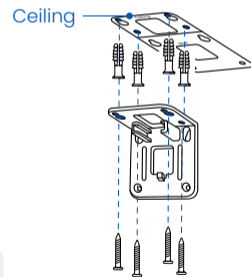
## Step 2. Secure the Mounting Bracket

Drill holes as indicated in the mounting template. Use included long screws to secure the bracket.

### A Wall Mounting



### B Ceiling Mounting

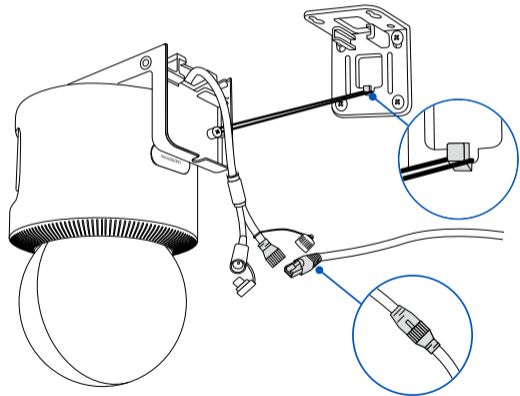


#### NOTE:

Use the included drywall anchors if needed.

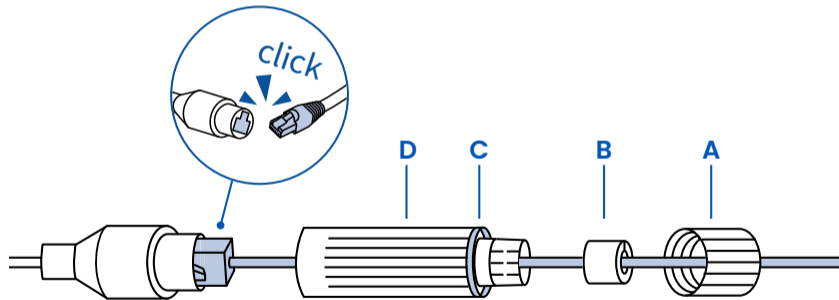
### Step 3. Connect the Waterproof Lid and Ethernet Cable

Hang the camera on the mount and connect the Waterproof Lid (refer to next page) and Ethernet cable. Wait for the indicator light to turn solid blue.



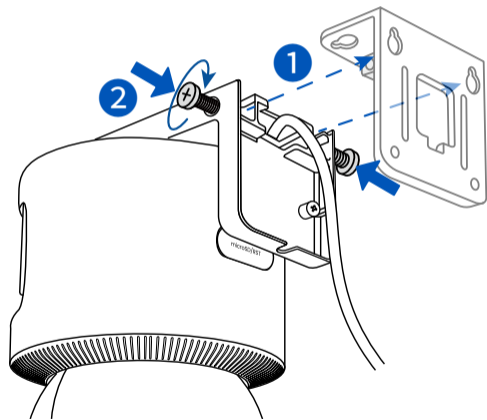
#### Waterproof Lid Connection

- 1 Route the Ethernet cable through the components in this order: **A**, **B**, **C**, then **D**.
- 2 Insert the Ethernet cable into the camera's PoE connector.
- 3 Attach component **D** to the camera's PoE connector and twist to lock it in place.
- 4 Insert components **C** and **B** into **D**, then rotate **A** to secure it to **D**.



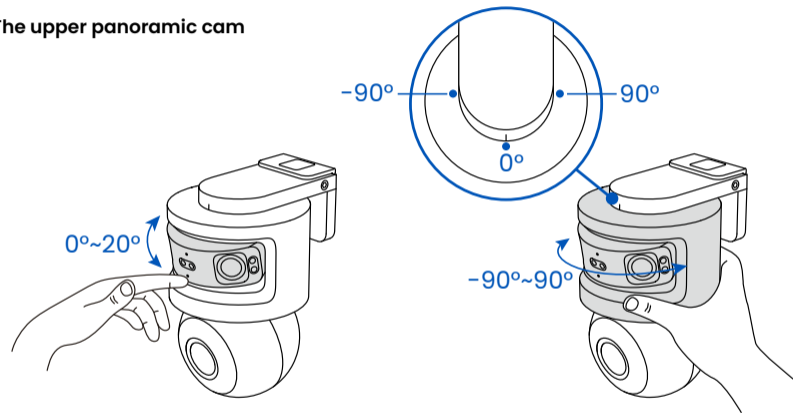
## Step 4. Secure the Camera

Align the camera with the bracket, slide it into place, and tighten the screws on both sides to secure it.



## Step 5: Adjust the Camera Angles

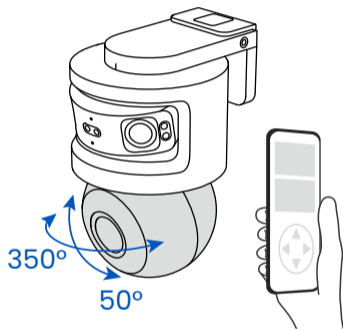
The upper panoramic cam



**NOTE:**

Manually adjust the dual lenses to your preferred angle.

### The lower PT cam



**NOTE:**

The PTZ lens can be remotely controlled through the Reolink App, Client, or NVR.

## 06 Specifications

Operating Temperature:  $-10^{\circ}\text{C}$  ~ $+55^{\circ}\text{C}$  ( $14^{\circ}\text{F}$ ~ $131^{\circ}\text{F}$ )

Operating Humidity: 10%~90%

Weight: 1.3 kg

For additional specifications, please visit.

## 07 Important Safety Instructions

Please read the instructions carefully before using the device.

1. Replace only with the same or equivalent type of accessories recommended by Reolink.
2. Do not use the device in an environment that exceeds the recommended temperature range.

3. Do not use the device in an environment that exceeds the recommended humidity range.
4. Do not attempt to disassemble, repair, or alter the device by yourself.
5. Always follow the local safety laws and regulations when using the device.
6. The device contains (or comes with) small components, small plastic elements, and other small parts that may cause choking hazards. Keep the device and its accessories out of reach of children. Consult a physician immediately if small parts are swallowed.
7. The device contains (or comes with) cables or cords that may cause strangulation hazards. Keep the device and its accessories out of reach of child.

## 08 Troubleshooting

### Camera Is Not Powering On

If your camera is not powering on, please try the following solutions:

- Make sure your camera is properly powered. This PoE camera requires either a PoE switch/injector, a Reolink PoE NVR, or a 12V/2A DC power adapter.
- If the camera is connected to a PoE switch or a Reolink PoE NVR, connect the camera to another PoE port and see if the camera will power on.
- Try again with another Ethernet cable.

If these won't work, contact Reolink support

### Picture Is Not Clear

If the picture from the camera is not clear, please try the following solutions:

- Check the camera lens for dirt, dust or spiderwebs, please clean the lens with a soft, clean cloth.
- Point the camera to a well-lit area, the lighting condition will affect the picture quality a lot.
- Upgrade the firmware of your camera to the latest version.
- Restore the camera to factory settings and check out again.

If these won't work, contact Reolink Support

## Spotlight Is Not On

If the spotlight on your camera is not on, please try the following solutions:

- Ensure the spotlight is enabled under Device Settings page via Reolink App/Client.
- Upgrade the firmware of your camera to the latest version.
- Restore the camera to factory settings and check out the spotlight settings again.

If these won't work, contact Reolink Support

## Infrared LEDs Stop Working

If the Infrared LEDs of your camera stop working, please try the following solutions:

- Enable infrared lights on Device Settings page via Reolink App/Client.
- Check if the Day/Night mode is enabled and set up auto infrared lights at night on Live View page via Reolink App/Client.
- Upgrade the firmware of your camera to the latest version.
- Restore the camera to factory settings and check out the infrared light settings again.

If these won't work, contact Reolink Support

## Camera Doesn't Work Properly When Added to the Reolink NVR or Home Hub

If your Reolink camera isn't working properly after being added to an NVR or Home Hub, please make sure the firmware on your camera, NVR, and Hub is updated to the latest version. If the issue continues after updating, contact Reolink Support at .

## 09 Legal Disclaimer

To the maximum extent permitted by applicable law, this document and the product described, with its hardware, software, firmware, and services, are delivered on an "as-is" and "as-available" basis, with all faults and without warranty of any kind. Reolink disclaims all warranties, express or implied, including but not limited to, warranties of merchantability, satisfactory quality, fitness for a particular purpose, accuracy, and non-infringement of third-party rights. In no event will Reolink, its directors, officers, employees, or agents be liable to you for any special, consequential, incidental or indirect damages, including but not limited to damages for loss of business profits, business interruption, or loss of data or documentation, in connection with the use of this product, even if Reolink has been advised of the possibility of such damages.

To the extent permitted by applicable law, your use of the Reolink products and services is at your sole risk and you assume all risks associated with internet access. Reolink does not take any responsibilities for abnormal operation, privacy leakage or other damages resulting from cyber attacks, hacker attacks, virus inspections, or other internet security risks. However, Reolink will provide timely technical support if required.

The laws and regulations related to this product vary by jurisdiction. Please check all relevant laws and regulations in your jurisdiction before using this product to ensure that your use conforms to the applicable law and regulation. During the use of the product, you must comply with relevant local laws and regulations. Reolink is not responsible for any illegal or improper use and its consequences. Reolink is not liable in the event that this product is used with illegitimate purposes, such as third-party rights infringement, medical treatment, safety equipment, or other situations where the product failure could lead to death or personal injury, or for weapons of mass destruction, chemical and biological weapons, nuclear explosion, and any unsafe nuclear energy uses or anti-humanity purposes. In the event of any conflicts between this manual and the applicable law, the latter prevails.

## **10** Notification of Compliance

### **FCC Compliance Statement**

This device complies with part 15 of the FCC Rules. Operation is subject to the following two conditions:

- (1) This device may not cause harmful interference, and
- (2) this device must accept any interference received, including interference that may cause undesired operation.

### **ISED Compliance Statements**

This Class B digital apparatus complies with Canadian ICES-003.  
Cet appareil numérique de la classe B est conforme à la norme NMB-003 du Canada.

### **Limited Warranty**

This product comes with a 2-year limited warranty that is valid only if purchased from Reolink Official Store or a Reolink authorized reseller. Learn more: .

**NOTE:** We hope that you enjoy the new purchase. But if you are not satisfied with the product and plan to return, we strongly suggest that you reset the camera to factory default settings and take out the inserted SD card before returning.

### **Terms and Privacy**

Use of the product is subject to your agreement to the Terms of Service and Privacy Policy at

### **Technical Support**

If you need any technical help, please visit our official support site and contact our support team before returning the products, .

### **Terms of Service**

By using the Product Software that is embedded on the Reolink product, you agree to the terms&conditions between you and Reolink. Learn more:

### **Trademarks Acknowledgement**

"Reolink" and other Reolink's trademarks and logos are the properties of Reolink. Other trademarks and logos mentioned are the properties of their respective owners.