

TRAVEL ADAPTER



tzumi

INTRODUCTION

The tzumi® Travel Adapter is built for all your vacations, business trips, and everywhere in between. Designed with USB-C and dual standard USB ports, along with wall outlet prongs for American, European, UK, and Australian sockets, its never been easier to keep your mobile devices charged—no matter where your adventures take you.

FEATURES

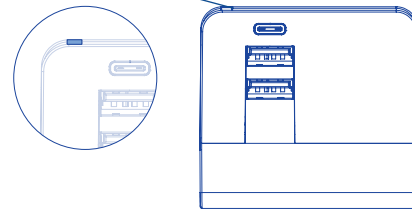
- 3 USB Ports
- Automatic Safety Shutoff
- LED Power Indicator
- Single Plug Safety Feature
- Built-In 6A Fuse (For Added Safety)

Compatible for use in over 150 countries. Includes US/EU/UK/AUST plugs. Auto shutoff safety feature. Only one plug-type may be used at a time.

LED power indicator

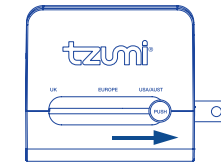
The power indicator light will turn on when the unit is plugged in and ready for use.

LED power indicator



United States

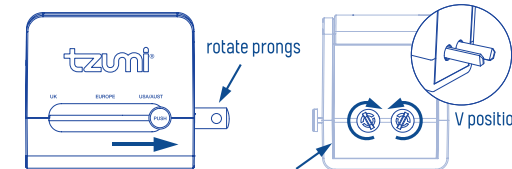
Press the button and slide right to the USA/AUST position. Both prongs should be in a parallel position.



press and slide right

Australia / New Zealand

Press the button and slide right to the USA/AUST position. Both prongs should be rotated in a V position.

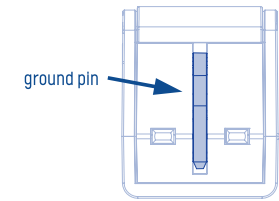


press and slide right

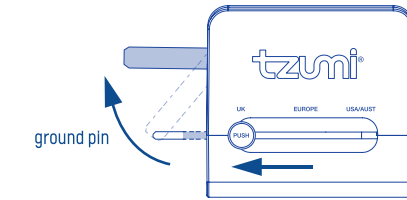
rotate prongs

United Kingdom

Press the button and slide left to the UK position for the prongs to emerge out of housing. Pull up the insulated ground pin from the housing.



ground pin

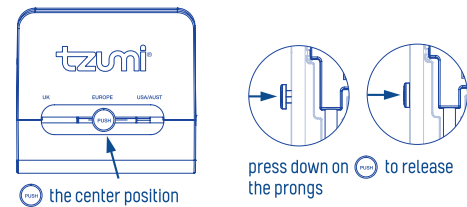


ground pin

press and slide left

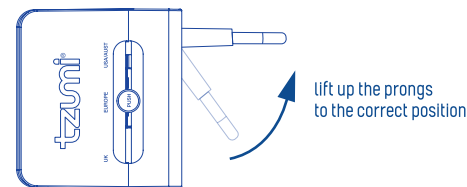
Europe

Slide the button to Europe, and then press down on the button to release the prongs. Once prongs are released from the housing, lift up the prongs to the correct position.



the center position

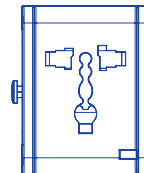
press down on to release the prongs



lift up the prongs to the correct position

Universal Plug Input

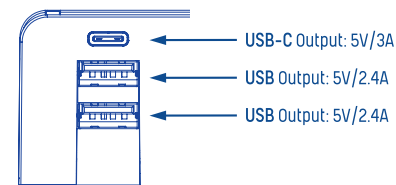
Once the Travel Adapter is ready for use, insert the desired plug into the universal plug input.



NOTE: This product may not work with certain high-power appliances like hair dryers. Please check your appliance label to see if it requires less than 6A and less than the max wattage supported regionally.

Charges up to 3 devices at once

The 3 ports on the side of the housing consist of 1 USB-C and dual USB charging ports.



USB-C Output: 5V/3A

USB Output: 5V/2.4A

USB Output: 5V/2.4A

Specifications

Product Size	2.4 x 1.8 x 2.2 in.
Product Weight	105g
Rated Voltage	110V - 250V
USB-A Output	5V/2.4A
USB-C Output	5V/3A
Max Output	6A 660W at 110V 1380W at 230V

If you have any other questions or issues with product use and/or care, please contact tzumi Technical Support at: support@tzumi.com or **1-855-GO-TZUMI**.

Caution

Before use, please read these instructions carefully! This product does not convert voltages. In order to avoid possible damage to your device or other safety hazards, please make sure the power outlet you intend to use has proper voltages BEFORE using this adapter

Each country has its own regulations regarding the use of travel adapters, so please check prior to use.

No grounding. This product is for use with double-insulated appliances only.

Indoor use only.

tzumi[®]
life just got better.



Tzumi® Travel Adapter Item No. 8481. Distributed by Tzumi inc. NY, NY, 10016. ©Copyright 2022 Tzumi. All Rights Reserved. Made In China. All brands are registered trademarks of their respective companies. All pictures shown are for illustration purpose only. Actual product may vary due to product enhancement. Subject to change without prior notice.