

COMPATIBLE MODELS



Perfectly Matched for USB-C Connectivity

- Compatible with iPhone 15/16 & Android Devices with Type-C Port.
- Not compatible with older iPhones/iPads with Lightning ports, Windows PCs, and MacBooks.

Note:

To avoid connection issues, please confirm your device supports USB-C and meets the compatibility criteria before use.

BEFORE USE

Step 1



Step 2



Download&Install the App

Use the inspection camera with the "Smart Endoscope" app. You can download it from Google Play or scan the QR code below.

Note:

Android devices must enable OTG connection in the phone settings to run the app normally. Some device models have OTG enabled by default.

Check that the function works properly

The LED lights on the lens will turn on when the cable is plugged into the phone. Ensure the borescope is in good condition and the camera is properly

Note:

Note: Make sure the USB-C connector is firmly plugged into your device.

FOR iOS



1. Open the Smart Endoscope app.

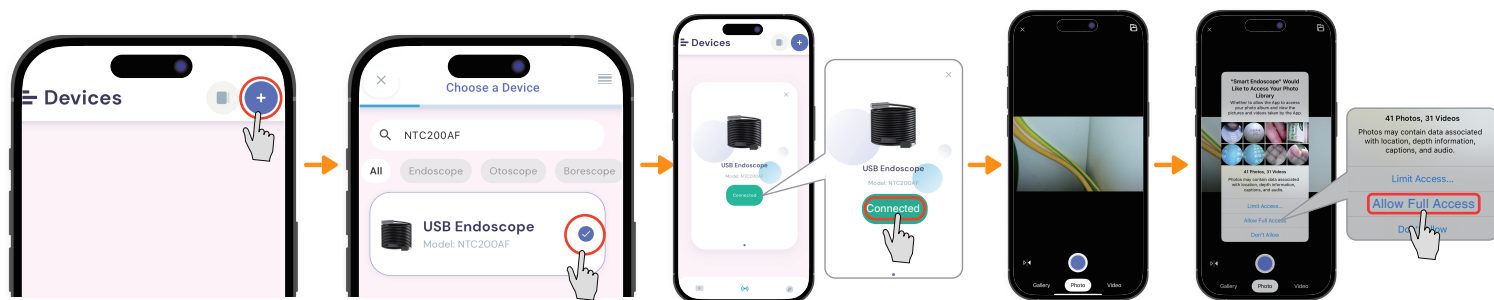
2. Local network access—Required to detect the device.

3. Notifications—Optional.

4. Wireless data usage—Choose either "WLAN & Cellular" or "WLAN Only."

Note

These permissions are only used to establish a smooth connection. Without granting them, the app may fail to connect or display the camera image properly. Your privacy is fully protected.



5. Click the "+" button to set up the device.

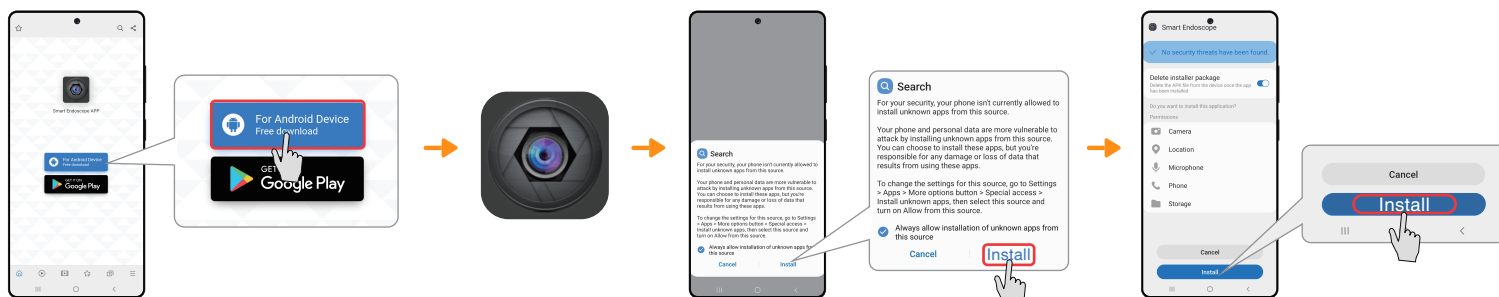
6. Click "NTC200AF" and start using it with your mobile device.

7. Tap "Connected" to link your device.

8. Live image will be displayed on screen.

9. To take photos and record videos, allow Smart Endoscope to access photos and media on your device.

FOR ANDROID



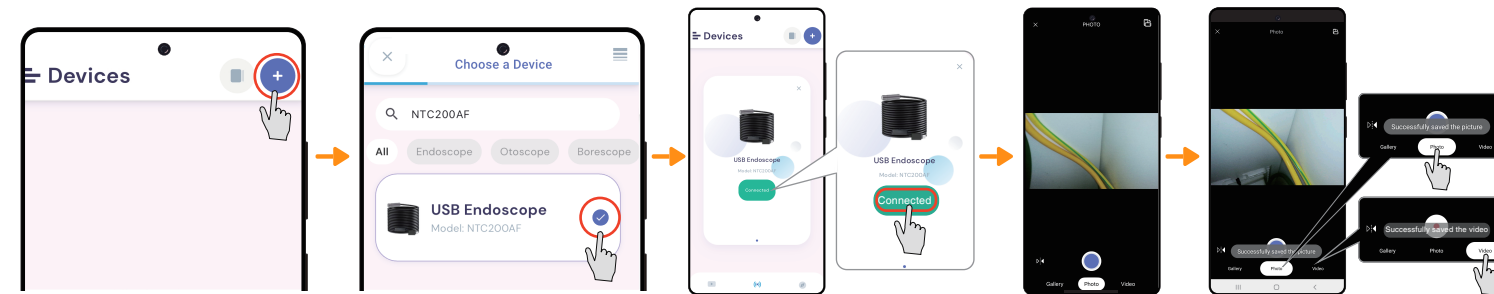
1. Installing the "Smart Endoscope" app.

2. Open the Smart Endoscope app.

3. After installing the app, grant the requested permissions to enable image display, device connection, and media saving.

Note

These permissions are only used to establish a smooth connection. Without granting them, the app may fail to connect or display the camera image properly. Your privacy is fully protected.



4. Click the "+" button to set up the device.

5. Click "NTC200AF" and start using it with your mobile device.

6. Tap "Connected" to link your device.

7. Live image will be displayed on screen.

8. Tap the photo or video icon to successfully save images or recordings to your device.