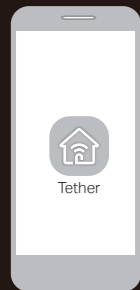


TP-Link HomeShield

TP-Link HomeShield premium security services keep your home network safe with cutting-edge features. Download the Tether app to enjoy HomeShield features.



Network Protection

Detects cyber threats to keep your privacy and connected devices well protected.



Quality of Service (QoS)

Prioritize your bandwidth needs for a better networking experience.



Parental Controls

Manage online time and block inappropriate content to maintain healthy online habits.



Comprehensive Reports

Gain full statistics and insights to help you know your home network better.

For more details, visit <https://www.tp-link.com/homeshield>.

EasyMesh-Compatible

You can experience strong, stable, and seamless wireless connections throughout your home with EasyMesh.



Setup Video

Seamless Roaming

Connects mobile devices to your routers or extenders that provide the best coverage. Devices compatible with EasyMesh also share a single Wi-Fi name so you stay connected in every room.

One-Click Settings

Press the WPS button on the main router and the satellite device within 2 minutes of each other, then the EasyMesh network will set up.

Flexible Scalability

Flexibly scale your home networking with different vendors,* different topologies, different Protocols and different product categories.

*Failure may be due to firmware conflicts of different vendors. A better network connection can be established between all APs from TP-Link.

For more information, visit <https://www.tp-link.com/easymesh/>

USB Applications

With the USB port, it's easy to share files and media with multiple devices. Visit <https://www.tp-link.com/app/usb> to learn more about the USB applications.

- **Remote Access:** Access the USB drive when you are away from home
- **Local Storage Sharing:** Share files from the USB drive with devices on your home network
- **Media Server:** Play media from the USB drive on your computer

Need Help?

Q1. What should I do if I want to change the WAN/LAN port for internet service?

- Connect to your desired WAN/LAN port with an Ethernet cable. During the quick network setup, select the corresponding port as the internet port. Alternatively, go to **More > Internet Connection > Internet Port** (Tether app) or **Advanced > Network > Internet > Internet Port** (web management page) to change the internet port.

Q2. What should I do if I can't access the web management page?

- Reboot your router and try again.
- If the computer is set to a static IP, change its settings to obtain an IP address automatically.
- Verify that <http://tplinkwifi.net> is correctly entered in the web browser. Alternatively, enter <http://192.168.0.1> or <http://192.168.1.1> in the web browser.
- Use another web browser and try again.
- Disable and enable the network adapter in use.

Q3. What should I do if I can't access the internet?

- Power off your modem for about 5 minutes, then power it on and check the internet. If your modem has more than one Ethernet port, keep the other ports unconnected.
- Check if the internet is working normally by connecting a computer directly to the modem via an Ethernet cable. If it is not, contact your internet service provider.
- Log in to the web management page, and go to the **Network Map** page to check whether the internet IP address is valid or not. If it's valid, go to **Advanced > Network > Internet > Internet**, click **Advanced Settings**, select **Use the Following DNS Addresses**, set the primary DNS to 8.8.8.8, and set the secondary DNS to 8.8.4.4. If it is not, check the hardware connection or contact your internet service provider.
- For cable modem users, log in to the web management page of the router and go to **Advanced > Network > Internet > MAC**

Clone. Select **Clone Current Device MAC** and click **SAVE**. Then reboot both the modem and the router.

Q4. What should I do if I forget my wireless password?

- If you have not changed the default wireless password, it can be found on the label at the bottom of the router.
- Connect a computer directly to the router using an Ethernet cable. Log in to the router's web management page at <http://tplinkwifi.net> and go to the **Wireless** page to retrieve or reset your wireless password.

Q5. How should I position my router for optimal Wi-Fi performance?

- Don't place your router in a corner or in a closet.
- Avoid obstacles and high-powered appliances.
- Keep your router in a central location at a certain height.
- Keep the antennas vertical when the router is placed on a desktop. Keep the antennas upright when the router is hanging on a wall.

For technical support, replacement services, user guides, and other information, please visit <https://www.tp-link.com/support>.

TP-Link hereby declares that the device is in compliance with the essential requirements and other relevant provisions of directives 2014/53/EU, 2009/125/EC, 2011/65/EU and (EU) 2015/863.

The original EU declaration of conformity may be found at <https://www.tp-link.com/en/support/ce>

TP-Link hereby declares that the device is in compliance with the essential requirements and other relevant provisions of the Radio Equipment Regulations 2017.

The original UK declaration of conformity may be found at <https://www.tp-link.com/support/ukca>

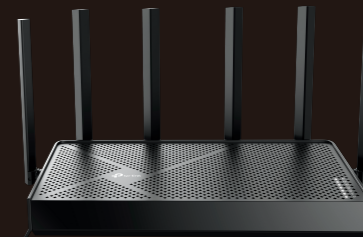
- Keep the device away from water, fire, humidity or hot environments.
- Do not attempt to disassemble, repair, or modify the device. If you need service, please contact us.
- Do not use any other chargers than those recommended.
- Do not use damaged charger or USB cable to charge the device.
- Do not use the device where wireless devices are not allowed.
- Adapter shall be installed near the equipment and shall be easily accessible.

©2025 TP-Link 7106500044 REV1.0.0



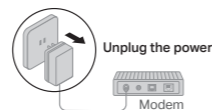
Quick Installation Guide

Tri-Band Wi-Fi 7 Router



1 Connect the Hardware

- ⚠️ **Unplug the power** to turn off your modem, if any, and remove the backup battery if it has one.
- Refer to **Q5 of Need Help?** to place the router for optimal Wi-Fi performance.



If your internet comes from an Ethernet outlet instead of a DSL / Cable / Satellite modem, connect the router's **WAN/LAN port** to it, then follow steps 3 and 4 to complete the hardware connection.

*Images may differ from your actual products.

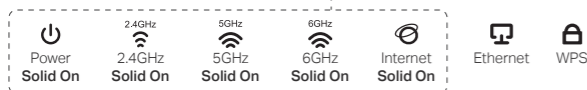
- 1 Connect the **powered-off** modem to one of the router's **WAN/LAN ports** with an Ethernet cable.

Note: If you want to change the WAN/LAN port for internet service, refer to **Q1 of Need Help** in this guide.



- 2 Power on the modem, and then wait about **2 minutes** for it to restart.

- 4 Verify that the hardware connection is correct by checking the following LEDs.



Note: If the 2.4GHz LED, 5GHz LED and 6GHz LED are off, press and hold the Wi-Fi button on the back for more than 2 seconds, then release the button. All the LEDs should turn solid on.

2 Set Up the Network

Method ONE: Via the TP-Link Tether App

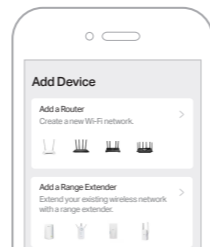
1. Download the Tether app.



2. Open the Tether app and log in with your **TP-Link ID**.

Note: If you don't have an account, create one first.

3. Tap the **+** button in the Tether app and select **Add a Router**. Follow app instructions to complete the setup and connect to the internet.



Note: Due to Tether app updates, your actual user interface and pathway may differ from those depicted here.

😊 Enjoy the internet!

To enjoy a more complete service from TP-Link, bind your TP-Link ID to the router.

Method TWO: Via a Web Browser

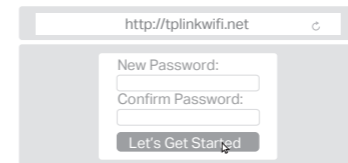
1. Connect your device to the router wirelessly or with an Ethernet cable.

The default wireless network names (SSIDs) and password are printed on the label at the bottom of the router.



2. Launch a web browser and enter **http://tplinkwifi.net** or **http://192.168.0.1** in the address bar. Create a password to log in.

Note: If the login window does not appear, please refer to **Q2 of Need Help?** in this guide.



3. Follow the step-by-step instructions to set up the internet connection and register for the **TP-Link Cloud service**.

😊 Enjoy the internet!

Button & LED Explanation

| Button | Description |
|-------------------|--|
| LED/ Wi-Fi | Single press to turn on or off the LEDs. Press and hold for about 2 seconds to turn on or off the wireless function of your router. |
| WPS | Single press the WPS button, and immediately press the WPS button on your client device to start the WPS process. |
| Reset | Press and hold this button for about 5 seconds until the Power LED blinks to reset the router to its factory default settings. |
| On/Off | Press to turn on or off the router. |

| LED | Description |
|-----|--|
| | Flashing: WPS connection is in progress. |
| | Solid on: At least one LAN port is connected. |
| | Solid White: Internet service is available. |
| | Solid Red: The WAN port is connected, but the internet service is not available. Off: The WAN port is unplugged. |
| | Solid on: The 6GHz wireless function is enabled. |
| | Solid on: The 5GHz wireless function is enabled. |
| | Solid on: The 2.4GHz wireless function is enabled. |
| | Solid on: The system has started up. Flashing: The system is starting up or the firmware is being upgraded. Do not disconnect or power off your router. |