

Instruction Manual

ELECTRIC SKATEBOARD

We continue to be committed to provide you tools with competitive price. "Save half", "Half Price" or any other similar expressions used by us only represents an estimate of savings you might benefit from buying certain tools with us compared to the major top brands and does not necessarily mean to cover all categories of tools offered by us. You are kindly reminded to verify carefully when you are placing an order with us if you are actually saving half in comparison with the top major brands.



For more information on skateboarding styles, see the web page

NEED HELP? CONTACT US!

Have product questions? Need technical support? Please feel free to contact us:

CustomerService@vevor.com

This is the original instruction, please read all manual instructions carefully before operating. VEVOR reserves a clear interpretation of our user manual. The appearance of the product shall be subject to the product you received. Please forgive us that we won't inform you again if there are any technology or software updates on our product.

CATALOGUE

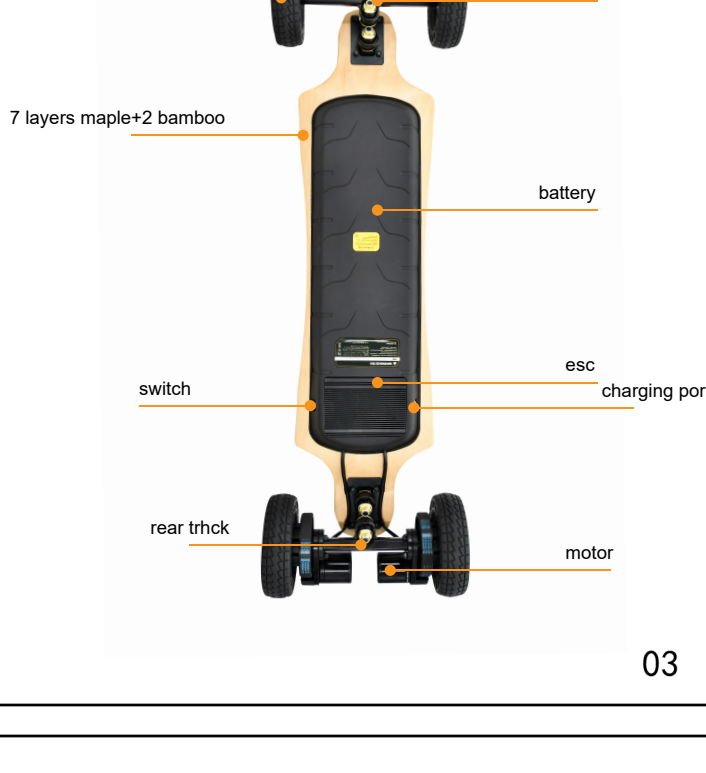
- 1.SKATEBOARDS AND ACCESSORIES
- 2.SKATEBOARD INTRODUCTION
- 3.PRODUCT PARAMETER
- 4.REMOTE CONTROL
- 5.INSTRUCTIONS FOR USE
- 6.CHANGE WHEELS
- 7.CHARGING INSTRUCTIONS
- 8.PRECAUTIONS
- 9.SAFETY WARNING

1.SKATEBOARDS AND ACCESSORIES



2.SKATEBOARD INTRODUCTION

Briefly understand the composition of the various components on this electric skateboard



3.PRODUCT PARAMETER

CAPABILITY	MAXIMUM SPEED	40KM/H
	ENDURANCE	25-30km
	MAX LOAD	120KG
BOARD	MATERIAL	7 layers maple + 2 bamboo
BATTERY	CAPACITY	7800mAh
	WATT	327.6WH
	CHARGING TIME	4-6HOURS
	VOLTAGE	42V
MOTOR	TYPE	5760 MOTOR*2
WHEEL	MATERIAL	PU
	SIZE	105mm/150mm
REMOTE	CAPACITY	300MAH
	FREQUENCY	2.4GHZ
	CONTROL DISTANCE	8-10M
	CHARGING TIME	1HOUR
CHARGER	VOLTAGE	42V
	INPUT	2A
	OUTPUT	42V
PACKAGE	N.W	12.1KG
	G.W	13.95KG
	PRODUCT SIZE	1070*310*155mm
	PACKAGE SIZE	1090*350*160mm

4.REMOTE CONTROL



REMOTE SCOOTER

Power on/off the remote control
Short press the power button "Power", ① the indicator light is on and it is turned on.
Long press the power button "Power" for 3 seconds, ① After the indicator light is off, it is turned off.
The remote control is not connected to the scooter, and it will automatically shut down within 30 seconds. The remote control and the scooter will not be automatically shut down if there is a connection between the remote control and the scooter. You must wait for the scooter to shut down and shut down after 30 seconds without connection.

Switch direction of skateboard
When the scooter is in a stationary state, short press the "Reverse" button to switch the front and rear direction of the scooter, and the skateboard will drive forward ① The light will show green, and then short press the "Reverse" button, the scooter will drive backwards ① The light will show red, and cycle in turn Front and back direction.

Speed shift of skateboard
Short press the Power button to switch the four gears of the scooter, the low-speed mode ⑤ light will be on, the medium speed mode ④ the light will be on, the high-speed mode ③ the light will be on, the sport mode ② the light will be on, the switch will exit after 3 seconds.

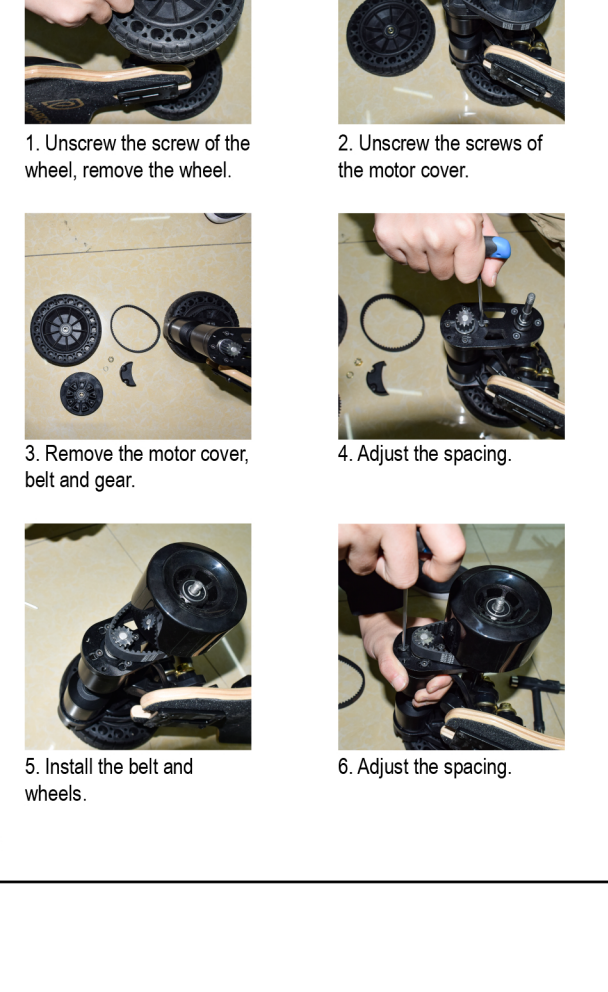
Switching of the brake force of the skateboard
Pull the "roller" back on the remote control and don't turn it on. At the same time, short press the "Power" button to switch the four gears of the scooter braking force, one gear ⑤ flashing, second gear ④ flashing, third gear ③ flashing, fourth gear ② The file flashes.

Charge the remote control
The remote control is charged with Micro USB. After the remote control is connected and charged, the indicator light of the remote control ②③④⑤ flashes and moves quickly. All four lights are on to indicate that the remote control is fully charged. When charging, the light is always on and the light is the charging indicator.

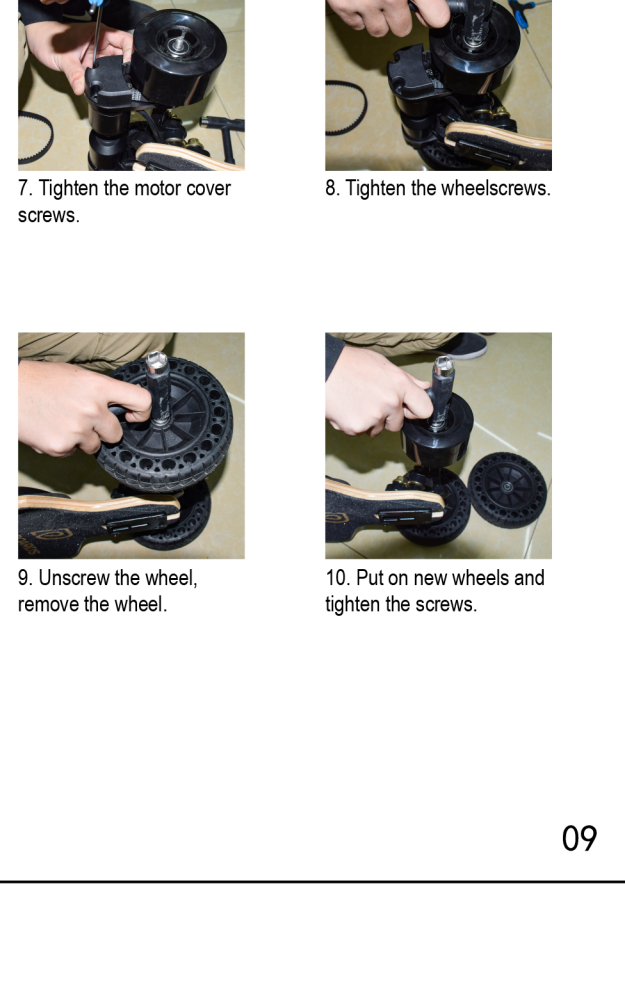
5.INSTRUCTIONS FOR USE

1. Turn on
First turn on the power switch of the skateboard (the switch is located on the left side of the skateboard), and then turn on the power switch of the remote control.
2. Check the speed mode
Check the position of the speed switch button on the remote control. It is recommended that novices who use this skateboard for the first time switch the speed switch to the low gear. When the scooter is running, it is prohibited to switch the speed mode at will.
3. On board
Open your feet and stand on the skateboard. You can first use an external force to help or hold on to the wall, etc. try to stand on the board and adapt. Before standing on the skateboard, pull the remote control dial back to the end. Helps stabilize the skateboard, and bends the knees appropriately to help maintain balance.
4. Control the forward acceleration.
Pull the push rod of the remote control back to the end for the first time on the board (that is, the brake state). At this time, people will stand relatively stable, and then try to slowly push the joystick forward to accelerate. For beginners, please push the remote stick slowly to accelerate. Too fast may cause loss of balance and easy fall. When accelerating, it is safer to lean forward slightly and place your weight on your front feet.
5. Turn
Let's take the front standing position with the left foot as an example. If the user uses the right foot in the front standing position, the opposite is true.
6. Decelerate and brake
When you find an obstacle or danger ahead, you should predict it in advance, pull the joystick back and slow down and brake smoothly, remember to brake suddenly to avoid danger, and deal with special situations calmly.
7. Shut down
Turn off the power switches of the electric scooter and the remote control respectively. When there is no operation within 10 minutes, the scooter and remote control will automatically shut down.

6.CHANGE WHEELS

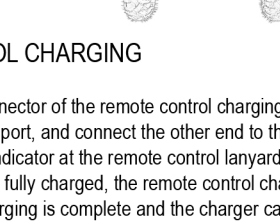


CHANGE WHEELS

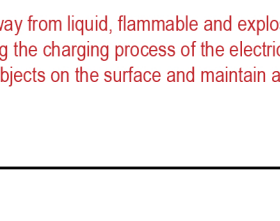


7.CHARGING INSTRUCTIONS

SKATEBOARD CHARGING
When charging, please turn off the power switch of the skateboard, turn the skateboard face down and lay it flat, and connect the charger charging port with the scooter charging port correctly. When the scooter is fully charged, the indicator light on the power adapter will change from red to green. At this time, the charging is completed and the charger can be unplugged.



REMOTE CONTROL CHARGING
Plug the Micro/USB connector of the remote control charging cable into the remote control charging port, and connect the other end to the 5V power supply. At this time, the charging indicator at the remote control lanyard will be red. When the remote control battery is fully charged, the remote control charging indicator will go out. At this time, the charging is complete and the charger can be unplugged.



Warning: Please stay away from liquid, flammable and explosive and other dangerous objects during the charging process of the electric scooter. It is forbidden to cover any objects on the surface and maintain adequate ventilation.

8.PRECAUTIONS

battery:
It is strictly forbidden to put conductive objects into the charging port, otherwise it will cause a short circuit and damage the electronic equipment inside the skateboard, and may even be dangerous.
Please use the electric scooter at a temperature of 10-30 °C as much as possible, otherwise, the battery will accelerate degradation of battery capacity, shorten battery life, and continue to reduce the cruising range.
If the battery fails, please go to the authorized agent of the electric scooter to handle it.
Unauthorized disassembly and modification are strictly prohibited.

Charging:
The lithium battery has no memory function and can be charged at any time.
To extend the life of the battery, please fully charge the battery in time after each taxi.
If the electric scooter battery is exhausted before charging, the lithium battery will be over-discharged and the battery life will be drastically reduced.
It is strictly forbidden to charge a lithium battery that has been over-discharged (not charged!). The over-discharged battery has potential safety hazards, please discard the battery.
If you do not use this electric scooter for a long time, please store it in a cool and dry room, fully charge the battery, maintain at least 80% power, and replenish the power at least once a month.

clean:
Make sure that the scooter is off, unplug the charging cable, fasten the dust cap of the charging port, wipe the shell or board of the electric scooter with a damp cloth, and be careful not to let water flow into the charging port or the shell of the electronic control part. So as not to damage the electric scooter.

maintenance:
Please check the bridge nuts and bridge stud nuts at the front and rear bridge components installation regularly, and lock them if they are loose.

9.SAFETY WARNING

If you do not follow the warnings in this manual to avoid related operations, it may cause property damage (and other ancillary injuries) or user injury, usually skin abrasions, but it may also cause serious injury or even death.

Skateboarding and other sports have potential risks and the possibility of injury. In the process of using the electric skateboard, the user may fall down due to loss of balance, causing injury or even death. When taxing, estimate the risk, drive carefully and learn how to turn and stop. Do not use skateboards on roads or other situations that increase the risk of injury.

Be sure to wear protective gear such as helmet, knee pads, elbow pads, etc. when using skateboards to reduce the risk of injury.

Using skateboards on sloped roads is extremely dangerous, especially on downhill roads. Please always remember to do what you can.

Taking into account the characteristics of electronic components, please avoid using electronic skateboards for wading. Permanent damage to electronic components caused by water is not covered by the warranty.

Please do not touch the power wheel with bare hands immediately after using this electric skateboard. This may cause burns and/or other ancillary injuries.

Do not use this electric skateboard at night or in other environments with low visibility. Do not use on smooth roads, such as snow/ice/slip surfaces, to prevent slipping during use.

FCC INFORMATION

CAUTION:
Changes or modifications not expressly approved by the party responsible for compliance could void the user's authority to operate the equipment!
This device complies with Part 15 of the FCC Rules. Operation is subject to the following two conditions:
1) This product may cause harmful interference.
2) This product must accept any interference received, including interference that may cause undesired operation.

WARNING:
Changes or modifications to this product not expressly approved by the party responsible for compliance could void the user's authority to operate the product.
Note: This product has been tested and found to comply with the limits for a Class B digital device pursuant to Part 15 of the FCC Rules. These limits are designed to provide reasonable protection against harmful interference in a residential installation.
This product generates, uses and can radiate radio frequency energy, and if not installed and used in accordance with the instructions, may cause harmful interference to radio communications. However, there is no guarantee that interference will not occur in a particular installation. If this product does cause harmful interference to radio or television reception, which can be determined by turning the product off and on, the user is encouraged to try to correct the interference by one or more of the following measures.
- Reorient or relocate the receiving antenna.
- Increase the distance between the product and receiver.
- Connect the product to an outlet on a circuit different from that to which the receiver is connected.
- Consult the dealer or an experienced radio/TV technician for assistance.