

j5create

Full-Size Wireless / Wired USB Keyboard and Mouse (Combo)



JIKMW105

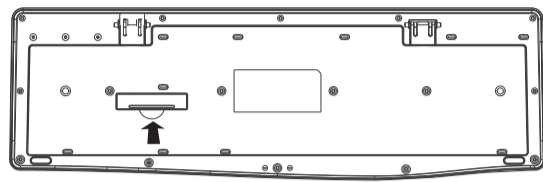


JIKMU105

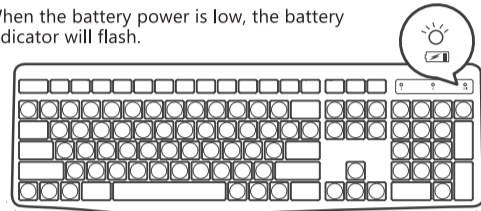
English

JIKMW105 Full-Size Wireless Keyboard and Mouse

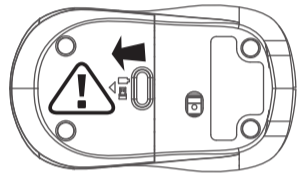
1 Open the battery cover and insert the batteries.



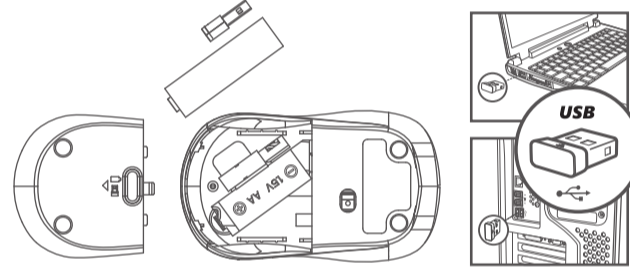
2 When the battery power is low, the battery indicator will flash.



3 Open the battery cover and insert the batteries.



4 Remove the USB™ receiver from the mouse and plug it into your computer. Connect the USB™ receiver to your computer.



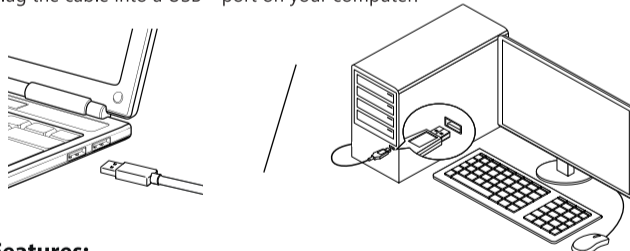
Features:

- 2.4G wireless keyboard and mouse combo
- 2.4 GHz wireless connection up to 10 m /33 ft
- Intelligent Power Saving modes designed to extend battery life
- Ergonomic, ambidextrous mouse with scroll wheel
- Full-size keyboard with an integrated number pad

JIKMU105

Full-Size Wired USB Desktop Keyboard and Mouse (Combo)

Plug the cable into a USB™ port on your computer.



Features:

- Durable, elegant wired keyboard and mouse combo
- Ergonomic, ambidextrous mouse with scroll wheel
- Full-size keyboard with an integrated number pad

LIMITED WARRANTY

j5create offers a limited 1-year warranty (depending on product purchased and/or location of purchase). User's wear & tear damage is not included. The user shall call or email j5create customer service with the defect information of the product and obtain a return authorization number. Users are responsible for one-way return freight cost and we will take care of one-way freight back. In order to obtain a return authorization number, users should have the following information handy when calling or emailing the service team:

- (i) a copy of the original purchase invoice to verify your warranty
- (ii) a product serial number
- (iii) a description of the problem
- (iv) customer's name, address, and telephone number

j5create does not warrant that the operation of the product will be uninterrupted or error-free. j5create is not responsible for damage arising from failure to follow instructions relating to the product's use. This warranty does not apply to: (a) consumable parts, unless damage has occurred due to a defect in materials or workmanship; (b) cosmetic damage, including but not limited to scratches, dents, and broken plastic on ports; (c) damage caused by use with non-j5create products; (d) damage caused by natural disasters; (e) damage caused by human misuse (lost, accident, abuse, misuse or other external causes); (f) damage caused by operating the product outside the permitted or intended uses described by j5create; (g) damage caused by service (including upgrades and expansions) performed by anyone who is not a representative of j5create or a j5create Authorized Service Provider; (h) a product or part that has been modified to alter functionality or capability without the written permission of j5create; or (i) if any j5create serial number on the product has been removed or defaced. If such a situation occurs, j5create will calculate the cost of materials and repair for your reference. This warranty is given by j5create in lieu of any other warranties expressed or implied.

LIMITATION OF WARRANTY

THIS WARRANTY GIVES YOU SPECIFIC LEGAL RIGHTS, AND YOU MAY HAVE OTHER RIGHTS THAT VARY FROM STATE TO STATE (OR BY COUNTRY OR PROVINCE). OTHER THAN AS PERMITTED BY LAW, J5CREATE DOES NOT EXCLUDE, LIMIT OR SUSPEND OTHER RIGHTS YOU MAY HAVE, INCLUDING THOSE THAT MAY ARISE FROM THE NONCONFORMITY OF A SALES CONTRACT. FOR A FULL UNDERSTANDING OF YOUR RIGHTS YOU SHOULD CONSULT THE LAWS OF YOUR COUNTRY, PROVINCE OR STATE, TO THE EXTENT NOT PROHIBITED BY LAW IN YOUR STATE, PROVINCE, JURISDICTION OR COUNTRY. THIS WARRANTY AND THE REMEDIES SET FORTH ARE EXCLUSIVE AND IN LIEU OF ALL OTHER WARRANTIES, REMEDIES AND CONDITIONS, WHETHER ORAL, WRITTEN, STATUTORY, EXPRESS OR IMPLIED.

J5CREATE'S RESPONSIBILITY FOR MALFUNCTIONS AND DEFECTS IN HARDWARE AND/OR SOFTWARE IS LIMITED TO REPAIR OR REPLACEMENT AS SET FORTH IN THIS WARRANTY. J5CREATE'S LIABILITY DOES NOT EXTEND BEYOND THE REMEDIES PROVIDED FOR IN THIS LIMITED WARRANTY, AND J5CREATE DOES NOT ACCEPT LIABILITY FOR CONSEQUENTIAL OR INCIDENTAL DAMAGES, FOR THIRD-PARTY CLAIMS AGAINST YOU FOR DAMAGES, FOR PRODUCTS NOT BEING AVAILABLE FOR USE, OR FOR LOST OR DAMAGED DATA OR SOFTWARE. J5CREATE DOES NOT WARRANT THAT THE OPERATION OF ANY J5CREATE PRODUCT WILL BE UNINTERRUPTED OR ERROR FREE.

J5CREATE'S LIABILITY IN ANY SITUATION WILL BE NO MORE THAN THE AMOUNT YOU PAID FOR THE SPECIFIC PRODUCT THAT IS THE SUBJECT OF A CLAIM. THIS IS THE MAXIMUM AMOUNT FOR WHICH WE ARE RESPONSIBLE.

EXCEPT FOR THE EXPRESS WARRANTIES CONTAINED IN THIS WARRANTY AND TO THE EXTENT NOT PROHIBITED BY LAW, J5CREATE DISCLAIMS ALL OTHER WARRANTIES AND CONDITIONS, EXPRESS OR IMPLIED, STATUTORY OR OTHERWISE, INCLUDING WITHOUT LIMITATION, WARRANTIES OF MERCHANTABILITY, MERCHANTABILITY QUALITY AND FITNESS FOR A PARTICULAR PURPOSE AND WARRANTIES AND CONDITIONS AGAINST HIDDEN OR LATENT DEFECTS. SOME STATES, PROVINCES, JURISDICTIONS OR COUNTRIES DO NOT ALLOW DISCLAIMERS OF IMPLIED WARRANTIES AND CONDITIONS, SO THIS DISCLAIMER MAY NOT APPLY TO YOU.

TO THE EXTENT SUCH WARRANTIES AND CONDITIONS CANNOT BE DISCLAIMED UNDER THE LAWS OF THE UNITED STATES, CANADA (AND ITS PROVINCES) OR OTHERWISE, J5CREATE LIMITS THE DURATION AND REMEDIES OF SUCH WARRANTIES AND CONDITIONS TO THE DURATION OF THIS EXPRESS LIMITED WARRANTY AND, AT J5CREATE'S OPTION, REPAIR OR REPLACEMENT SERVICES. SOME STATES, PROVINCES, JURISDICTIONS OR COUNTRIES MAY NOT ALLOW LIMITATIONS ON HOW LONG AN IMPLIED WARRANTY OR CONDITION MAY LAST, SO THE LIMITATION DESCRIBED ABOVE MAY NOT APPLY TO YOU.

NO WARRANTIES OR CONDITIONS, WHETHER EXPRESS OR IMPLIED, WILL APPLY AFTER THE LIMITED WARRANTY PERIOD HAS EXPIRED. SOME STATES, PROVINCES, JURISDICTIONS OR COUNTRIES DO NOT ALLOW LIMITATIONS ON HOW LONG AN IMPLIED WARRANTY OR CONDITION LASTS, SO THIS LIMITATION MAY NOT APPLY TO YOU.

WARRANTY SUPPORT ONLY APPLIES WHEN THE COVERED PRODUCT IS LOCATED WITHIN THE COUNTRY IN WHICH J5CREATE ORIGINALLY SOLD THE SYSTEM, AS REFLECTED IN J5CREATE'S RECORDS. IF YOU NEED SUPPORT FOR THE PRODUCT OUTSIDE OF THE COUNTRY OF ORIGIN (FOR EXAMPLE, WHILE TRAVELING, OR IF THE SYSTEM HAS BEEN RELOCATED TO A NEW COUNTRY), THEN J5CREATE MAY OFFER YOU OTHER SUPPORT OPTIONS FOR AN ADDITIONAL CHARGE.

For more information please visit our website at <http://www.j5create.com>

Copyright © 2025 J5create. All rights reserved. All trade names are registered trademarks of their respective owners. Features and specifications are subject to change without notice. Product may not be exactly as shown in the diagrams.

FCC Warning

This device complies with Part 15 of the FCC Rules. Operation is subject to the following two conditions:  
(1) This device may not cause harmful interference, and (2) this device must accept any interference received, including interference that may cause undesired operation.

NOTE 1: This equipment has been tested and found to comply with the limits for a Class B digital device, pursuant to part 15 of the FCC Rules. These limits are designed to provide reasonable protection against harmful interference in a residential installation. This equipment generates, uses and can radiate radio frequency energy and, if not installed and used in accordance with the instructions, may cause harmful interference to radio communications. However, there is no guarantee that interference will not occur in a particular installation. If this equipment does cause harmful interference to radio or television reception, which can be determined by turning the equipment off and on, the user is encouraged to try to correct the interference by one or more of the following measures:  
- Reorient or relocate the receiving antenna.  
- Increase the separation between the equipment and receiver.  
- Connect the equipment into an outlet on a circuit different from that to which the receiver is connected.  
- Consult the dealer or an experienced radio/TV technician for help.

NOTE 2: Any changes or modifications to this unit not expressly approved by the party responsible for compliance could void the user's authority to operate the equipment.

The device has been evaluated to meet general RF exposure requirement. The device can be used in portable exposure condition without restriction.

STOP

If you have any problems with this product please contact our technical support team for assistance.

TECHNICAL SUPPORT

Customer Service: **888-988-0488**  
Technical Support: **888-689-4088**  
Email: [service@j5create.com](mailto:service@j5create.com)

**SOPORTE TÉCNICO**  
Número gratuito: +1-888-988-0488  
Horario de atención:  
Lun-Vier. 10:00 a.m – 6:00 U.S.A.-E.S.T  
Email: [service@j5create.com](mailto:service@j5create.com)

**TECHNISCHER SUPPORT**  
Kostenloser Anruf bei: +1-888-988-0488  
Sprechstunden:  
Mon.-Frei. 10.00 – 18.00 U.S.A.-E.S.T  
E-mail: [service@j5create.com](mailto:service@j5create.com)

**TECHNICKÁ PODPORA**  
Zákaznická linka: 888-988-0488  
Technická podpora: 888-689-4088  
E-mail: [service@j5create.com](mailto:service@j5create.com)

**テクニカルサポート**  
お客様相談センター: 03-5540-9010  
電子メール: [j5\\_support@solnet.co.jp](mailto:j5_support@solnet.co.jp)  
テクニカルサポートやその他のご相談は下記の時間にご対応いたしますようお願い申し上げます  
営業時間: 平日: 9:30~11:30/13:30~17:30

**Kajjet Technology International B.V.**  
Telefoonnummer: +31-(0)6-2880 2882  
Adres: Zomerdoorn 20,3068  
MZ Rotterdam, Netherlands  
E-mail: [service@j5create.com](mailto:service@j5create.com)

**TECHNIKAI SEGÍTSÉG**  
Vevőszolgálat (angol nyelven): 888-988-0488  
Technikai támogatás (angol nyelven):  
888-689-4088  
E-mail: [service@j5create.com](mailto:service@j5create.com)

**SUPPORT TECHNIQUE**  
Numéro gratuit : +1-888-988-0488  
Heures d'ouverture :  
Lun.-Ven. 10:00 a.m – 06:00 U.S.A.-E.S.T  
Email : [service@j5create.com](mailto:service@j5create.com)

**技術支援資訊**  
美國客服專線: +1-888-988-0488  
台灣客服專線: +886-2-2269-5533#19  
客服時間:  
星期一至星期五 9:30 AM-6:00PM (台灣時間)  
Email信箱: [service.tw@j5create.com](mailto:service.tw@j5create.com)

凱捷國際科技股份有限公司

236 新北市土城區忠承路109號8樓(永寧科技園區A棟)

202512-V1

USB is a trademark of USB Implementers Forum, Inc., its affiliates or its respective owners, registered or used in many jurisdictions worldwide. Windows is a trademark of Microsoft Corp., its affiliates or its respective owners, registered or used in many jurisdictions worldwide. Other trademarks and trade names may be used in this document to refer to either the entities claiming the marks and/or names or their products and are the property of their respective owners. All company, product and service names used are for identification purposes only. Use of these names, logos, and brands does not imply endorsement. We disclaim any interest in the marks of others.

技术要求：（材质，工艺，尺寸，公差等）

- 1) 材质：100g书写纸
- 2) 工艺：单色双面印刷+对折
- 3) 尺寸：折后尺寸100\*250mm  
展开尺寸200\*250mm
- 4) 公差：+/-0.1mm

名称	说明书	设计	审核
产品型号	CK801+CM892	日期	2025. 12. 24 批准
客户	深圳劫斯特	产品料号	版本 A1
比例	1:1	备注	有线 无线共用

\*如PDF档用AI打开字体，图片缺失请供应商及时反馈!谢谢，合作愉快!

创享  
COUSO

