



# Bennett Read®

## 9000BTU **AIR CONDITIONER**

PORTABLE YEAR-ROUND COMFORT SOLUTION



## USER GUIDE



### **DOUBLE-UP YOUR WARRANTY!**

SCAN\* TO REGISTER YOUR EXTRA 1 YEAR WARRANTY

\* HOW? IT'S SIMPLE REALLY...

- SWITCH ON YOUR MOBILE CAMERA, POINT IT AT THE QR CODE ON THE LEFT & TAP THE LINK THAT POPS UP
- IF THAT DOESN'T WORK, YOU'LL NEED TO DOWNLOAD & USE A QR CODE SCANNER APP FROM YOUR PHONE'S APP STORE

# CONGRATULATIONS ON PURCHASING A BENNETT READ® 9000BTU PORTABLE AIR CONDITIONER

## EXTENDED WARRANTY

Your BENNETT READ® 9000BTU Portable Air Conditioner comes with a 1 (one) year warranty. If you register your warranty online within 14 (fourteen) days of purchase, we will extend the warranty to 2 (two) years. To activate your extended warranty, scan the QR code on the cover of this user guide, then tap on the link and complete the online form. Alternatively, visit [www.bennettread.co.za](http://www.bennettread.co.za), click the "Register Warranty" tab at the top of the page, and then complete the form provided. We also stand behind it with a knowledgeable, dedicated Customer Care department, so should you ever have a problem, you'll receive fast, considerate assistance (please see contact details on page 14).

**READ THIS USER GUIDE CAREFULLY BEFORE USING THIS PRODUCT.  
KEEP THIS USER GUIDE FOR FUTURE REFERENCE.**

## SAFETY PRECAUTIONS

**When using any electrical appliance, basic safety precautions should always be followed, including the following:**

- Remove all packaging before using the Portable Air Conditioner for the first time. **WARNING:** Plastic bags can be dangerous. To avoid the danger of suffocation, keep bags away from babies and children. Please recycle any paper and plastic waste.
- Incorrect operation or improper use can damage the appliance and cause injury to the user and/or property.
- To protect against the risk of electric shock, **DO NOT IMMERSE OR WET** the Portable Air Conditioner, power cord or plug in water or any other liquid.
- Consult your local waste authority for information regarding available recycling and/or disposal options.
- To reduce the risk of electric shock, only connect this appliance to a mains power electrical supply that has an Earth Leakage Circuit Breaker installed.
- Before using the Portable Air Conditioner, check that the voltage shown on the rating label of the appliance matches that of your mains electricity.
- The Portable Air Conditioner may only be used if it is clean, fully assembled, and operating correctly. Check all the plug connections and the working state of the appliance at regular intervals.
- Only connect the Portable Air Conditioner to a power socket that has been installed properly.
- Do not use a power strip or an extension cord. Do not attempt to extend the power cord, use an electrical multiway plug or share the same power outlet with other appliances.
- Always uncoil the power cord and ensure that it is fully extended before plugging in and powering on the appliance.
- A short power cord is provided to reduce the hazards resulting from becoming entangled in, or tripping over a longer cord.
- Do not carry the appliance by the power cord.
- Do not place the cord over any part of the unit.
- Do not damage, bend, stretch, or twist the power cord; do not place heavy objects on the power cord

- or clamp the power cord.
- Do not use a voltage converter with this appliance.
- Plug the power cord into a nearby power socket or portable power supply so that the plug can be removed easily in case of an emergency.
- Always turn the power off at the power outlet before you insert or remove the plug. Remove the plug by grasping the plug, do not pull on the power cord.
- To avoid fire hazards and electrical shock, always ensure that the plug is clean, dry, and inserted properly into the power source.
- Do not let children handle or put the power cord or plug into their mouths.
- This appliance is not intended for use by persons (including children) with reduced physical, sensory, and mental capabilities, or a lack of experience and knowledge unless they have been given supervision or instruction concerning the use of the appliance by a person responsible for their safety.
- Children should be supervised to ensure that they do not play with the appliance.
- Keep the appliance safely out of reach of children. Close supervision is required when any appliance is used near children or invalids.
- Cleaning and user maintenance must not be done by children.
- Do not leave this appliance unattended during use or while plugged into a power source. Always switch off and unplug the appliance before moving the appliance, before adding or removing parts/accessories, before cleaning, draining, or in the event of a malfunction.
- **WARNING:** To avoid damage to the Compressor, never store or transport this appliance horizontally or upside down. After transportation, make sure that the Portable Air Conditioner has been kept upright for at least two hours before it is turned on and used.
- **IMPORTANT:** Ensure that the unit is switched off and unplugged after each use. If the appliance is plugged into a power source, the unit is on and is in Standby Mode.
- Do not unplug while the unit is operating.
- Do not cover any part of the unit or place objects on top of the unit. Do not climb or sit on the appliance.
- Do not operate the Portable Air Conditioner with a damaged power cord, or plug, after a malfunction, or if it has been dropped or damaged in any manner. Return the unit to an authorised Tevo Service Centre for examination. Do not attempt to repair or disassemble any part of the appliance yourself.
- If the power cord or plug is damaged, it must be replaced by the manufacturer or a qualified person in order to avoid an electrical hazard.
- Do not use means to accelerate the defrosting process or to clean, other than those recommended by the manufacturer.
- To reduce the risk of electric shock, do not immerse or expose the appliance, power cord or plug to water or any other liquid; do not use the appliance outdoors, in a bathroom, laundry, moving vehicle or boat, damp area, or near any source of water. Never place the unit where it may fall into a bathtub or other water container. Do not expose the appliance to rain.
- Never touch the Portable Air Conditioner, power cord, or plug with damp or wet hands; or if you are standing on wet ground
- Ensure that the power cord is positioned so that it cannot be tripped over.
- Do not use the Portable Air Conditioner where it could be subject to hot surfaces such as stoves; heat sources such as heaters; fire or open flames; mechanical vibration or shock; excessive dust; a lack of ventilation (eg. inside a cabinet); or sharp edges.
- Do not use the Portable Air Conditioner near possible sources of ignition. The Portable Air Conditioner uses a highly flammable refrigerant.
- Always check that the power cord is not jammed into doors or squashed in any way.
- Do not let the power cord hang over the edge of a table or countertop. Ensure that the power cord is not in a position where it is within reach of children or where the Portable Air Conditioner can be pulled on inadvertently.
- Do not place objects over the Portable Air Conditioner Air Vents, or operate it in close proximity to curtains or anything that may become caught in the Air Vents.
- Do not run the power cord under carpeting. Do not cover the power cord with throw rugs, runners, or

- similar coverings. Do not route the power cord under furniture or appliances. Keep the power cord away from high-traffic areas. Place the plug in an area where the power cord will not be tripped over.
- Keep the Portable Air Conditioner clean and dust-free. A common cause of overheating results from dust or fluff deposits which become lodged in the appliance. Ensure that these deposits are removed regularly by switching off the appliance, unplugging it and vacuum cleaning the Portable Air Conditioners Air Vents as well as the Air Filter.
  - Do not use in areas where gasoline, paint, or flammable or explosive liquids/gases are used or stored.
  - Use the unit only as described in this user guide. Any other use not recommended may cause fire, electric shock or injury.
  - The use of parts/accessory attachments that are not recommended or supplied by Tevo may result in injuries, fire or electric shock.
  - Do not operate this appliance by means of an external timer, or any other device that is capable of switching the unit on automatically.
  - For indoor use only. Do not operate outdoors or where aerosol (spray) products are being used, where oxygen is being administered. Do not use flammable gas, petrol, benzene or other volatile substances near the appliance.
  - Keep the Portable Air Conditioner away from direct sunlight.
  - Do not attempt to mount the Portable Air Conditioner on a ceiling or wall.
  - Only operate the Portable Air Conditioner in an upright position and do not move the Portable Air Conditioner when it is in use. Switch the appliance off before moving the appliance.
  - Do not block the air circulation of the Portable Air Conditioner.
  - Place the Portable Air Conditioner on a stable, level floor surface. Never operate the Portable Air Conditioner on uneven surfaces or in the vicinity of steps. Do not tip the appliance over when it is in use. Take care of floor skirting or floor connections. Do not tilt or turn the appliance over.
  - Do not touch the Air Inlet, aluminium fins or evaporator surface of this appliance.
  - Do not touch or make contact with any moving parts. Keep hands, hair and clothing away from the Air Vents to reduce the risk of injury and/or damage to the appliance.
  - Empty the Water Tank after each use.
  - Do not insert fingers, body parts, or foreign objects through the Portable Air Conditioner Air Vents or Air Inlets.
  - Keep all objects at least 70cm from the front, sides and rear of the appliance.
  - Do not use this appliance for cooling medicine or academic research samples which require strict temperature control.
  - This product is intended for domestic/household use only and is not user-serviceable. Commercial use invalidates the warranty and the supplier cannot be held responsible for injury or damage caused when using the appliance for any other purpose than that intended.
  - Tevo does not accept responsibility for any damage or injury caused by improper or incorrect use, or for repairs and maintenance carried out by unauthorised personnel.
  - The unit is designed only for use with R290 (propane) gas as the designated refrigerant.
  - In case of technical problems, switch off the unit and do not attempt to repair it yourself. Return the appliance to an authorised Tevo Service Centre for examination, adjustment or repair. Always insist on the use of original spare parts. Failure to comply with the above-mentioned precautions and instructions could affect the safe operation of this appliance.
  - If a refrigerant leak is suspected, immediately ventilate the room, evacuate and contact your authorised Tevo Service Centre for advice. Do not re-enter the room until it is safe to do so.
  - Do not disassemble or burn this appliance to dispose of it. Do not dispose with general municipal waste. Contact your local municipality for information on safe disposal in your area.



**CAUTION:** This appliance uses a flammable refrigerant. Harmful gases and a fire risk can be posed if the refrigerant leaks and is exposed to ignition sources, for example: a spark, fire, cigarette, gas appliance, electric heater or heating element.

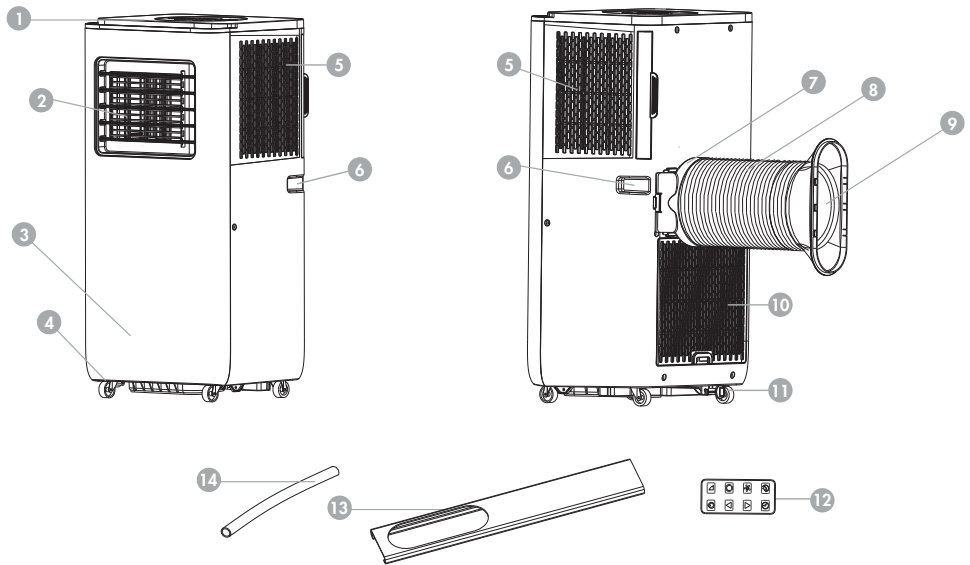
# PRODUCT INTRODUCTION

Our powerful Portable Air Conditioners are excellent for creating a comfortable atmosphere in your space. They also feature Ventilation and Dehumidifying functions to circulate air and remove moisture.

These self-contained systems do not require any permanent installation, allowing you to move them to where they are most needed. Portable Air Conditioners are commonly used in temporary residences, living areas, home offices, garages, and wherever installing an outdoor Air Conditioning unit is not feasible.

Our units use the environmentally friendly R290 refrigerant. R290 doesn't harm the ozone layer in terms of ozone depleting potential (ODP), has a negligible global warming potential (GWP), and is available worldwide. Due to its thermal energy efficient properties, R290 is highly suitable as a refrigerant for this application. The refrigerant is highly flammable, meaning special precautions need to be taken.

## PORTABLE AIR CONDITIONER OVERVIEW



- ① Control Panel with Room Temperature Display
- ② Air Outlet with Horizontal Air Vents
- ③ Built-in Self-evaporative Drainage Tank
- ④ Caster Wheel (4pcs)
- ⑤ Air Inlet Screen with Air Filter
- ⑥ Handle
- ⑦ Hose Connector
- ⑧ Flexible Exhaust Hose
- ⑨ Window Kit Adaptor
- ⑩ Air Inlet
- ⑪ Water Drainage Outlet with Plug
- ⑫ Remote Control
- ⑬ Adjustable Sliding Window Kit
- ⑭ Drain Hose

The Adjustable Sliding Window Kit is globally supplied as the standard Window Kit with Portable Air Conditioners. It is suitable for installation on sliding window types. The Bennett Read Window Seal Kit is a DIY solution available for purchase separately and is suitable for casement, push-in and push-out window types.

## LOCATION & INSTALLATION OF YOUR APPLIANCE

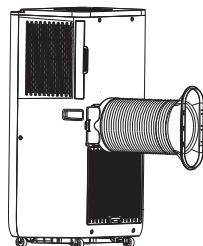
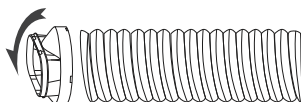
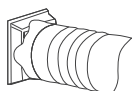
- Before use, take all of the appliance parts out of the packaging and remove all packaging materials and inserts. Ensure to check that all parts are included.
- The Portable Air Conditioner should be placed on a firm floor to minimize noise and vibration. For safe and secure positioning, place the unit on a dry, smooth, level floor which is strong enough to support the unit. Make sure that it is used in a safe location. ALWAYS KEEP THE UNIT UPRIGHT.
- Ensure an area with at least 70cm of free space around the appliance to allow for proper air circulation.
- Do not operate in close proximity to walls, curtains, or other objects that may block Air Inlets and outlets. Keep the Air Inlets and Outlets free of obstacles and blockages.
- Attach the Flexible Exhaust Hose by following the installation steps outlined in this user guide.
- Ensure that the water drainage outlet plugs and/or the Drain Hose are correctly and tightly fitted to their water drainage outlets to avoid leakage. Check the Drainage section of this user guide for information regarding the Drainage Plugs and the Drain Hose.
- Manually open the adjustable air vents by hand.

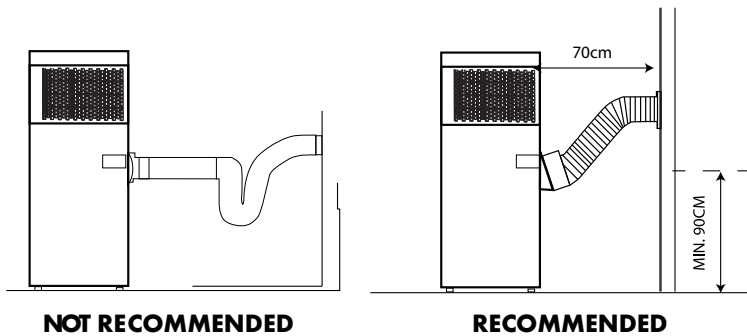
**NOTE:** After transportation, or should the Portable Air Conditioner tip over, please make sure that the appliance has been kept upright for at least two hours before it is turned on and used.

## ATTACHING THE FLEXIBLE EXHAUST HOSE

Portable Air Conditioners require ventilation to the outside via the use of a Flexible Exhaust Hose. This ventilation method ensures that exhaust air (heat and moisture) generated from the appliance leaves the room for efficient portable air conditioner performance. Before use, ensure that the Flexible Exhaust Hose is connected to the appliance and vented through a window.

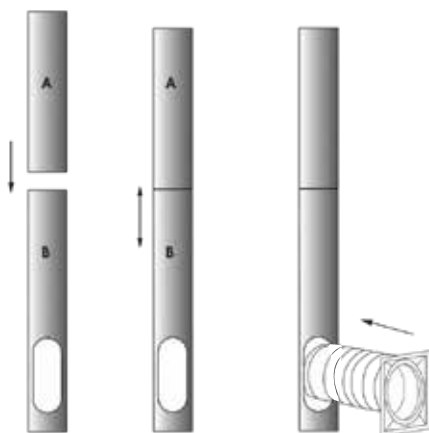
1. Start by attaching the Hose Connector to one end of the Exhaust Hose.
2. This will be followed by attaching the Window Kit adaptor to the other end of the Exhaust Hose.
3. Open your window and attach the Adjustable Sliding Window Kit to your window. It can be positioned vertically or horizontally in the window. Slide the kit open so that it adjusts to the length that you require. Now close the window onto the Window Kit and connect the Window Kit adaptor to the Window Kit.
4. Close your window to secure the kit in place. Further, secure the Window Kit with duct tape if required. Ensure that there are no gaps between the kit and the window for maximum efficiency.
5. Now attach the Hose Connector to the Air Exhaust Outlet of the appliance.
6. Adjust the length of the Flexible Exhaust Hose as you are moving and placing the appliance near an electrical power source. Ensure that the Flexible Exhaust Hose does not bend or kink.





**Note:** Do not sharply bend (greater than 45°) or over-extend the Exhaust Hose. A bent hose will block exhaust air and cause the unit to malfunction or shut off. The Exhaust Hose can be compressed or extended moderately, but it is desirable to keep the length to a minimum. The length of the Exhaust Hose is designed according to the product specifications. The distance between the appliance and the window should exceed 70cm. The height from the floor to the exhaust hose should exceed 90cm. Do not replace or lengthen it with any other pipe or hose as this could cause the unit to malfunction and/or overheat. Use only the Exhaust Hose supplied with the appliance or a replacement Exhaust Hose supplied by Tevo. Keep ventilation of the exhaust pipe clear of obstructions.

**ADJUSTABLE SLIDING WINDOW KIT INSTALLATION:**



**DRAINAGE**

During operation, Portable Air Conditioners extract moisture, or water vapour, from the air. This moisture condenses as water in a tank which is located inside the appliance. This Portable Air Conditioner has an automatic evaporation system which removes the need to drain/empty the Water Tank when using cooling mode. It will, however, be necessary to drain/empty the tank when using the heating mode, drying mode, or when using the appliance in high humidity environments. There are two drainage methods available:

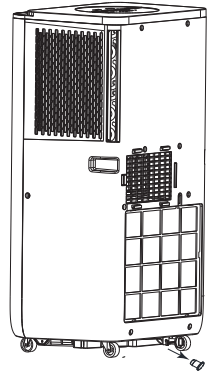
- 1) Manual Drainage; or 2) Continuous Drainage.

The Portable Air Conditioner will stop operating and show the error code 'E4' on the control panel when the Water Tank is full and needs to be emptied/drained. The unit will also sound an audible alarm notification.

## MANUAL DRAINAGE

To manually empty/drain the Water Tank:

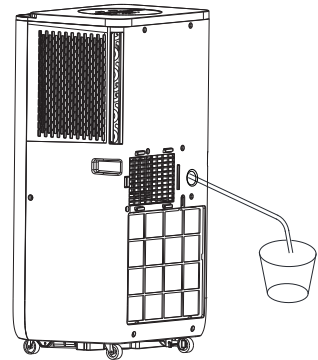
1. Switch the unit off and unplug the appliance from the power source.
2. If needed, carefully move the Portable Air Conditioner so as to not spill water internally.
3. Place any water catchment container behind the appliance so that it is located below the water drainage outlet.
4. Now remove the drainage plug from the water drainage outlet. You will notice water automatically beginning to flow into the water container. Keep the plug nearby so that it is easily accessible.
5. During drainage, you can tilt the Portable Air Conditioner slightly backwards to assist with clearing water.
6. Should you find that the water catchment container needs to be emptied before the drainage process is complete, add the drainage plug back into the water drainage outlet as soon as possible to avoid spillage onto the floor or carpet. Empty the water catchment container and proceed with draining/emptying again until the process is completed.
7. Once all the water has been discharged, add the drainage plug back into the water drainage outlet.
8. The draining/emptying process is now complete. The Portable Air Conditioner can now be plugged into the power source and restarted for use.



## CONTINUOUS DRAINAGE

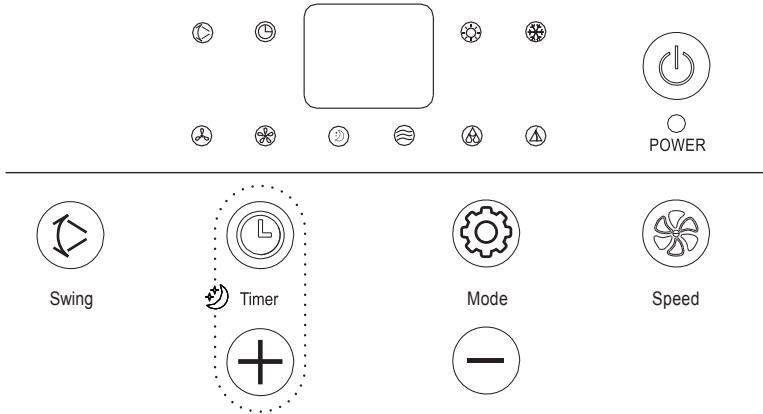
For uninterrupted operation, we recommend installing the Drain Hose to the water drainage outlet:

1. Ensure that the appliance is switched off and unplugged from the power source.
2. Remove the plug from the water drainage outlet and keep it stored safely for future use.
3. Connect the Drain Hose to the drainage outlet area securely and ensure that it is clear of obstruction and kinks.
4. Place the outlet of the Drain Hose over a large water catchment container as water will freely drain from the unit into the container during use. The Drain Hose must be straightened as much as possible and tilted downward toward the floor. To avoid an airlock in the hose, ensure that the outlet of the Drain Hose does not submerge in the water.
5. Continuous drainage set-up is complete. Plug the Portable Air Conditioner back into the power source, turn the unit on and use as required.



**Note:** We recommend that you regularly check the water level of the water catchment container to avoid spillage. If full, turn the appliance off, unplug from the power source and empty the water catchment container as needed.

# CONTROL PANEL



**POWER:** Once the appliance is plugged into a power supply, it is on and automatically enters Standby Mode. Press the Power button to wake the controls. Press the Power button again to revert to Standby Mode. Unplugging the appliance from the power supply turns it off.

**COMFORT MODES:** Press the mode button to select your preferred comfort mode. There are five comfort mode choices available:

**Fan Mode:** Constant airflow, ideal for ventilating your room. Air is circulated but not cooled.

**Cool Mode:** Well suited to lower the temperature in your room and provide cooling comfort. The Portable Air Conditioner will automatically detect the ambient temperature of your room and turn cooling off, should the ambient temperature of the room, drop below the temperature which you have programmed in the appliance. The unit will cycle cooling on and off to maintain this programmed temperature. Working temperature in Cooling Mode: 15°C - 31°C

**Heat Mode:** Well suited to increase the temperature in your room and provide warmth and heating comfort. Note that the temperature which you program into the appliance must be higher than the ambient temperature of the room. Before using the heating mode, ensure that the drainage hose is connected to the drainage outlet for continuous appliance operation. Working temperature in Heating Mode: 15°C - 31°C

**Dry (Dehumidify) Mode:** Removes moisture from the air in your home until relative humidity is reduced to the level you choose. Helps reduce high humidity, musty odours, mildew and condensation. Before using the Dehumidifying Mode, ensure that the Drainage Hose is connected to the drainage outlet for continuous appliance operation. Note that the fan speed automatically switches over to low speed and is not adjustable whilst using this mode. Here the compressor and the fan may cycle on and off to regulate as needed.

**AUTO MODE:** Allows the portable air conditioner to automatically select appropriate functions (Cool or Fan mode) according to the ambient temperature. Should the room temperature  $\geq 24^{\circ}\text{C}$ , the unit will automatically select Cool mode. Should the room temperature  $< 24^{\circ}\text{C}$ , the unit will automatically select Fan mode.

**To ensure optimal efficiency of the appliance, we recommend keeping doors and windows closed when it is used in Cooling, Heating and Dehumidifier Modes.**



**FAN SPEEDS:** Whilst the unit is turned on, press the speed button to select your preferred fan speed. There are two Fan Speed choices (Low or High). Fan Speed may be used in conjunction with Fan, Cooling and Heating Modes.



**INCREASE OR DECREASE BUTTONS:** Increase or decrease the desired temperature as well as the amount of time in the Timer setting.



**ADJUSTABLE TIMER (1-24 HOURS):** The auto-on and auto shut-off Timer allows you to set the amount of time: 1) in which you would like the appliance to automatically start operating; 2) or in which you would like the appliance to remain in operation and will automatically switch the appliance to Standby Mode once the period of time has elapsed. For auto-on, set the Timer whilst the unit is in Standby Mode. For auto-off, set the Timer whilst the unit is operating. The Timer is set in 1 hour increments from 1 hour up to 24 hours. Each button press adds 1 hour to the amount of time required and will be shown on the display panel while you are programming it. To cancel the Timer, press the increase or decrease button repeatedly until the display panel shows '00', alternatively, press the Power button.



**SLEEP MODE:** Well suited to provide comfort while the user is asleep. The Fan Speed may switch over to low speed for a gentler and quieter airflow. Note that Fan Speed cannot be adjusted in this Mode. Sleep Mode can be used for the Cooling Mode: the preset temperature will gradually increase by 1°C after hour one and then again after hour two. After which, the temperature will be kept constant. The unit will shut down after a total of 6 hours run time.

**AUTO-SWING FUNCTION:** The Auto-Swing Function allows the horizontal air vent to swing vertically from top to bottom distributing air evenly throughout the room. This function can be turned on or off as desired. Press the Swing Button to activate or deactivate the function. The corresponding function indicator light will illuminate on the control panel once activated.

**TEMPERATURE SCALE SWITCH:** Press and hold the increase and decrease buttons simultaneously to switch between Celsius and Fahrenheit.

**BUILT-IN MEMORY FUNCTION:** This Portable Air Conditioner features a convenient Built-In Memory Function. Should there be a sudden electricity outage on your property or in your residential area during the operation of your unit, the Built-In Memory feature will automatically restart your Portable Air Conditioner, resuming operation and the last pre-programmed settings once power has been restored.

## REMOTE CONTROL

- The Remote Control uses 1x CR2025 3V battery (not included).
- The Remote Control functions are the same as the Control Panel.
- **Note:** The Remote Control must point towards the receiver on the Portable Air Conditioner in order to work.
- Remove the batteries if the Remote will not be used for long periods of time.



## WARNING: KEEP NEW AND USED BATTERIES AWAY FROM CHILDREN.

Leaking or damaged batteries can cause burns on contact with skin. Batteries could potentially be a choking hazard for children. If a battery is swallowed it can cause severe internal burns in just 2 hours and can lead to death. If you think a battery may have been swallowed or placed inside any part of the body seek immediate medical attention. DO NOT DISPOSE OF BATTERIES IN FIRE. BATTERIES MAY EXPLODE OR LEAK.

# USING YOUR PORTABLE AIR CONDITIONER

- Before using your appliance, please make sure that it is located and installed correctly.
- Connect the appliance to a suitable power source. The power indicator light will illuminate to show that the appliance is now in Standby Mode.
- Touch the Power button to wake the controls. The appliance will start up in Auto Mode.
- You may now select alternative fan Speeds and Comfort Modes, program Sleep Mode if required or set the Timer Function by pressing the appropriate buttons.

**NOTE:** When changing modes while the appliance is in operation, the Compressor will stop for 3 to 5 minutes before restarting. When a button is pressed during this time, the Compressor will not start for another 3 to 5 minutes.

- Once you have finished using the Portable Air Conditioner, press the Power button to cancel all functions and return to Standby Mode.
- Unplug the unit from the power source to turn the appliance off. Followed by draining and cleaning. Refer to the DRAINAGE and CARE AND CLEANING sections of this user guide for detailed instructions.

## **NOTE:**

- Once unplugged from the power supply or having pressed the Power button to return to Standby Mode, please wait 3 minutes before switching the appliance back on again to protect the Compressor.
- When moving the unit, do so with extreme caution, making sure that water from the Water Tank does not leak and spill. The unit should be moved slowly and in a sideways direction.

# CARE AND CLEANING

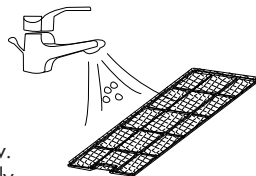
- Before cleaning, turn the appliance off and always disconnect the power plug from the power source.
- If it is very dirty, the outside of the appliance can be wiped carefully with a damp cloth and mild soap and then dried thoroughly. Make sure that no moisture penetrates into the interior of the appliance.
- DO NOT use bleach, alcohol, gasoline, abrasive cleaners/solvents, benzene, oil-based cleaners, furniture polish, or any other harsh chemicals to clean the appliance. Do not use steel wool, scouring pads or rough brushes to clean the appliance. This may cause damage or deterioration to the surface of the appliance.
- Re-tighten visible screw connections on the appliance regularly in order to ensure that the device is functioning properly.
- Clean the appliance regularly.
- The appliance, its components, power cord and plug should not be immersed in water or other liquids during cleaning. Clean them with a dry cloth.

## WASHABLE AIR FILTER SYSTEM

To keep your appliance running at optimum performance, we recommend that the washable Air Inlet Screen and air filter is cleaned once every 2 weeks.

Over time, dust collects on the filter as well as the Air Inlet Screen and begins to restrict airflow. The restricted airflow reduces the efficiency of the system and if it becomes blocked it can cause damage to the unit.

1. To clean the air filter system, ensure that the appliance is switched off and unplugged from the power source.
2. Remove the Air Inlet Screen and air filter located at the back of the unit.
3. Use a vacuum cleaner to suck dust from the filter and Air Inlet Screen.
4. Turn the filter over and rinse the air filter under running water. Let the water run through the filter in the opposite direction of the air flow. Set aside and allow the Air Inlet Screen and air filter to air dry completely before reinstalling.



**NOTE:** Do not operate the unit without the Air Inlet Screen and air filter, or the evaporator may be contaminated.

**WARNING:** Do not add additives, oils or scented sprays to the Air Inlet Screen or air filter. Do not touch the evaporator surface to avoid injury to the user and damage to the appliance.

## MAINTENANCE BEFORE STORAGE

If the appliance will not be used for a long period of time or will be placed in storage, we recommend that you follow the maintenance below so as to protect your appliance and increase its longevity:

- Ensure that the Water Tank is completely drained and empty.
- Run the unit in fan mode for 30 minutes to remove excess moisture.
- Clean and reinstall the Air Inlet Screen and air filter.
- To avoid component damage and mould, ensure that the evaporator inside the machine has an opportunity to dry before storage. To allow the evaporator to dry, unplug the appliance from the power source and place the appliance in a dry, open area for 24-48 hours before storage.
- Uninstall the Drain Hose, Exhaust Hose and Window Kit. Store together with the Portable Air Conditioner.
- Store the appliance in a cool, dry, well-ventilated and non-corrosive location out of direct sunlight when not in use. To prevent dust and dirt build-up, store the appliance in its original packaging.
- Never store the appliance while it still contains water, is still damp or dirty.
- Never wrap the power cord around the appliance.
- To avoid damage to the Compressor, never store or transport this appliance horizontally or upside down.
- Remove batteries from the Remote Control for use later on.

## AUTOMATIC DEFROST PROTECTION

At low room temperatures, frost may build up at the evaporator during operation. Should this occur, the unit will automatically start defrosting. Automatic Defrost Protection occurs in the following scenarios:

1. During operation in Cooling or Drying (Dehumidifying) Mode: Automatic Defrost Protection will initiate should the Indoor Coil temperature drop or maintain a level of  $\leq -2^{\circ}\text{C}$  ( $30^{\circ}\text{F}$ ) for longer than 3 minutes. The Compressor and Outdoor Fan will stop operation, whilst the Indoor Fan operates at high speed to allow defrosting until the Indoor Coil temperature reaches or exceeds  $\geq 7^{\circ}\text{C}$  ( $45^{\circ}\text{F}$ ). The unit will restart once the Indoor Coil reaches the required minimum temperature.
2. During operation in Heating Mode: Automatic Defrost Protection will initiate should the Outdoor Coil temperature drop or maintain a level of  $\leq -5^{\circ}\text{C}$  ( $23^{\circ}\text{F}$ ) for longer than 2 minutes. The Heating Mode indicator light will begin flashing and the Compressor will stop operation to allow defrosting, either for a duration of 10 minutes or until the Outdoor Coil temperature reaches or exceeds  $\geq 10^{\circ}\text{C}$  ( $50^{\circ}\text{F}$ ). The unit will restart once the Automatic Defrost Protection cycle completes.

## COMPRESSOR OVERLOAD PROTECTION

Compressor Overload Protection initiates if there is a loss of electricity supply. In such a scenario, there will be a 3 minute delay before the Compressor restarts.

## THERMAL OVERHEAT PROTECTION

If the appliance overheats, the thermal safety cut-off device will engage and cut off all electricity being supplied to the appliance. This is to prevent damage to the appliance. If this happens, first check to ensure that the power supply which the appliance is plugged into, is working and supplying power. It may take up to 30 minutes for the appliance to normalise internal temperatures. Once the temperature has normalised, the appliance will continue to operate. If the appliance still does not turn on, please return the appliance to your nearest authorised Tevo Service Facility for an inspection.

## OVERFLOW PROTECTION

To prevent the internal Water Tank from overflowing once full, the Compressor will stop operation and the appliance will automatically sound an indicator alarm with the corresponding error message 'E4' shown on the control panel display. This is normal. Refer to the DRAINAGE section of this user guide for drainage instructions.

## PROTECTIVE MEASURES

As a protective measure and to prolong the life of your appliance, your portable air conditioner may stop operating in the following conditions:

### Cooling Mode:

- Indoor air temperature is over  $43^{\circ}\text{C}$
- Room temperature is below  $15^{\circ}\text{C}$

### Dehumidifying Mode:

- Room temperature is below  $15^{\circ}\text{C}$

Please note that condensation may drip from your portable air conditioner in Cool or Dehumidification modes should relative humidity reach 80% or higher.

# TROUBLESHOOTING

PROBLEM		POSSIBLE CAUSE	SOLUTION
The appliance is not operating.		<ol style="list-style-type: none"> <li>1. Check the power connection.</li> <li>2. Check if the Water Tank indicator light is illuminated.</li> <li>3. Check the room temperature. Ambient temperature maybe too low or too high.</li> <li>4. In Cooling Mode, the room temperature is lower than the temperature set on the appliance; in Heating Mode, the room temperature is higher than the temperature set on the appliance.</li> <li>5. In Dehumidification Mode, the ambient temperature is low.</li> </ol>	<ol style="list-style-type: none"> <li>1. Ensure that the plug is correctly inserted into the power supply. If you are unsure if the power supply is working, you can plug another appliance or lamp into it as a secondary check.</li> <li>2. The tank will need to be drained/emptied if the Water Tank indicator light is illuminated.</li> <li>3. Use the appliance in a room temperature between 15 - 31°C.</li> <li>4. Change the temperature set on the appliance.</li> <li>5. Use the appliance in a room with an ambient temperature greater than 15°C.</li> </ol>
The appliance is operating at a reduced capacity.		<ol style="list-style-type: none"> <li>1. Check if the Air Filter and/or Air Filter Screen is dirty or blocked.</li> <li>2. Check the Air Inlet, Air Outlet and Exhaust Hose for blockages.</li> <li>3. Check if a window or door is open in the room.</li> <li>4. Check if the desired Mode has been selected and the temperature has been properly set.</li> <li>5. The Exhaust Hose has detached.</li> </ol>	<ol style="list-style-type: none"> <li>1. Clean the air filter and/or air filter screen following the instructions in this user guide.</li> <li>2. Clear the obstruction from the Air Inlet, Air Outlet or Exhaust Hose.</li> <li>3. Keep doors and windows closed. Direct sunlight can also provide heat, draw the curtain closed if needed.</li> <li>4. Set the Mode and temperature at the adequate set point.</li> <li>5. Ensure that the Exhaust Hose is securely attached.</li> </ol>
Water Leakage		<ol style="list-style-type: none"> <li>1. Possible overflow while moving the appliance.</li> <li>2. Check if the Drain Hose is bent or kinked.</li> <li>3. Check Drainage Plug/s.</li> </ol>	<ol style="list-style-type: none"> <li>1. Empty the Water Tank before transport.</li> <li>2. Check that the Drain Hose is installed securely and straightened.</li> <li>3. Check that the drainage plug/s are installed securely.</li> </ol>
Excessive Noise		<ol style="list-style-type: none"> <li>1. Check that the unit is firmly positioned and seated on a solid surface.</li> <li>2. Check if there are any loose, vibrating parts.</li> <li>3. Water flowing sounds.</li> </ol>	<ol style="list-style-type: none"> <li>1. Place the appliance on a firm, flat, solid and stable area.</li> <li>2. Secure and tighten any loose external parts.</li> <li>3. This sound is produced by the flow of refrigerant and is normal.</li> </ol>
Compressor does not work.		<ol style="list-style-type: none"> <li>1. Modes have been changed.</li> <li>2. The internal Water Tank is full.</li> <li>3. The appliance has entered into overheat protection.</li> </ol>	<ol style="list-style-type: none"> <li>1. Please wait a few minutes for the Compressor to adjust and restart.</li> <li>2. The internal Water Tank needs to be drained/emptied.</li> <li>3. Wait for up to 30 minutes until the temperature has lowered, then restart the appliance.</li> </ol>
The Remote Control does not work.		<ol style="list-style-type: none"> <li>1. The battery in the Remote Control are flat/depleted.</li> <li>2. The distance between the appliance and the Remote Control is too far.</li> <li>3. The Remote Control is not aligned sufficiently with the remote control receiver on the appliance.</li> </ol>	<ol style="list-style-type: none"> <li>1. Replace battery.</li> <li>2 &amp; 3. Use the Remote Control closer to the appliance and point it in a more direct position.</li> </ol>
Error Codes	E2	The temperature sensor is experiencing a problem.	Please contact your nearest authorised Tevo Service Centre to arrange an examination of your appliance.
	E3	The Coil temperature sensor is experiencing a problem.	Please contact your nearest authorised Tevo Service Centre to arrange an examination of your appliance.
	E4	Full tank alarm notification. The Water Tank is full.	This is normal. Drain/empty the Water Tank.

## WARRANTY

Your BENNETT READ® 9000BTU Portable Air Conditioner is warranted against manufacture faults for a period of 1 (one) year. If you register your warranty online at [www.bennettread.co.za](http://www.bennettread.co.za) within 14 (fourteen) days of purchase, then your warranty will be extended to 2 (two) years. Tevo undertakes to repair or replace this product at no charge if found to be defective due to a manufacturing fault during the warranty period. This warranty excludes damage caused by misuse, neglect, limescale buildup, rust, shipping accident, commercial use, incorrect installation, or work carried out by anyone other than an authorised and qualified Tevo Service Technician. Tevo is not liable for incidental or consequential damages of any nature associated with the use of this product. Tevo's liability will not exceed the purchase price of this product.

PLEASE KEEP YOUR RECEIPT TO VERIFY YOUR WARRANTY.

This warranty applies to product used for personal or domestic use only, and specifically excludes any malfunction or defect arising from commercial use.

Replacement Parts, Warranty and Service enquiries can be made by contacting:

### Tevo (Pty) Ltd

Johannesburg (012) 740 5000

Durban (031) 570 5900

Cape Town (021) 380 0039

Customer Service Help Line: 0861 77 88 88

[www.tevo.co.za](http://www.tevo.co.za)

## SPECIFICATIONS

Model:	BRMN2	IP Code:	IP20
Stock Code:	HFN802	Sound Power Level:	<64dB(A)
Unit Dimensions:	33 x 28 x 68.5cm	Refrigerant Charge:	R290 160g
Cooling Capacity:	2600W	Net Weight:	21.5kg
Heating Capacity:	2000W	Maximum Suction/Exhaust	
Rated Voltage:	220-240V	Side Working Pressure:	1.2MPa/2.5MPa
Rated Frequency:	50Hz	Maximum Permissible Pressure	
Cooling Rated Input Power:	950W	On The High/Low Pressure Side:	2.5MPa
Cooling Rated Input Current:	4.3A	Heat Exchanger Maximum	
Heating Rated Input Power:	750W	Allowable Pressure:	2.5MPa
Heating Rated Input Current:	3.4A		

## ENVIRONMENTALLY FRIENDLY DISPOSAL

Do not dispose of electrical appliances with general municipal waste. Hazardous substances can leak and contaminate the groundwater, affecting the food chain and ultimately damaging the environment and your health. Contact your local municipality for information on safe disposal in your area.





# Bennett Read®

EVERYDAY EXCEPTIONAL

Brought to you by:



0861 77 88 88

[www.tevo.co.za](http://www.tevo.co.za)

[info@tevo.co.za](mailto:info@tevo.co.za)

