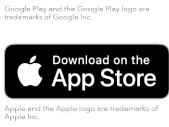


APP

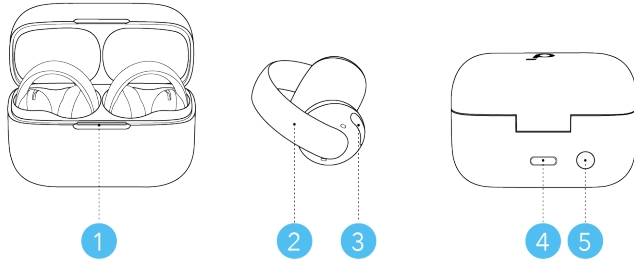


Download the soundcore app to check battery level of the earbuds, customize controls, experience dual connections, update firmware and explore more exciting features.

If your earbuds cannot connect with the soundcore app, re-install the app or update it to the latest version in your mobile app store.

Click this link to download: <http://dl-soundcore.soundcore.com/qcdl?flow=soundcore>

OVERVIEW



1. LED Indicator

2. C-Bridge with Tap Control Area

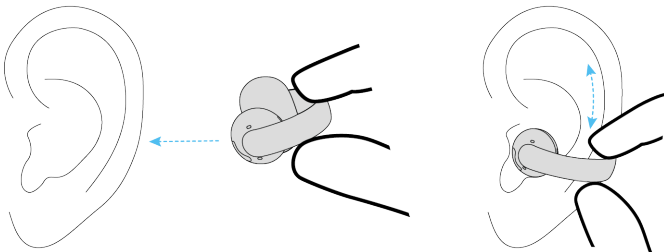
• The Tap Control Area covers the entire C-bridge.

3. Sound Outlet

4. USB-C Charging Port

5. Charging Case Button

WEARING

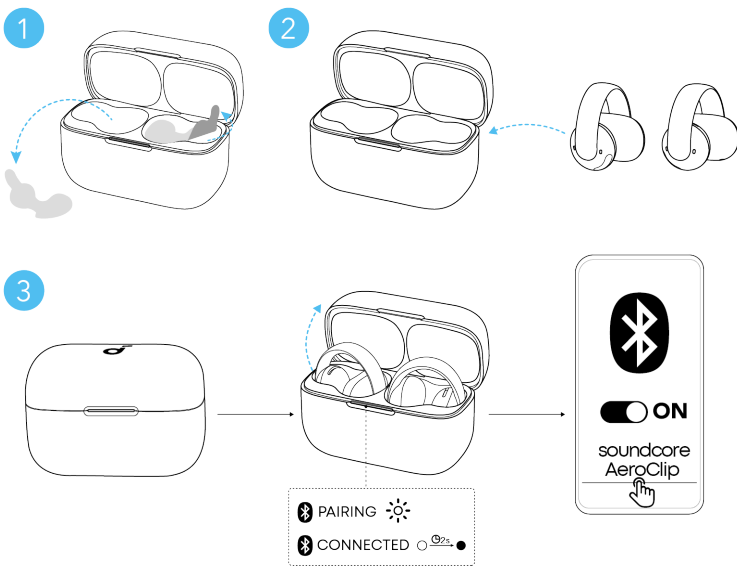


Put the earbuds onto the thinnest point of your ear's outer edge. Adjust for optimal audio performance while listening.

• Medium and large sizes of ear grips come with the package. If the fit is loose, try the ear grips for a more stable fit.

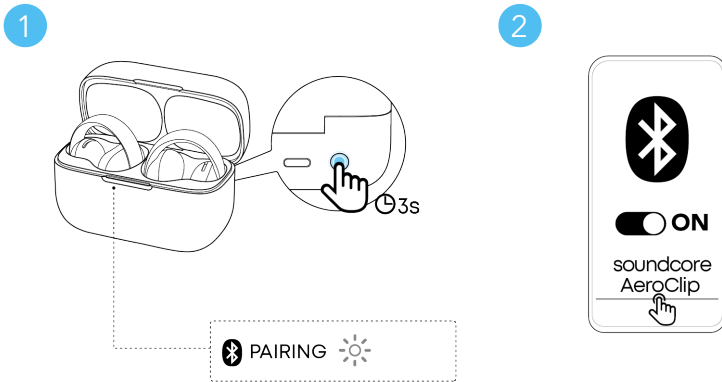


POWERING ON & PAIRING



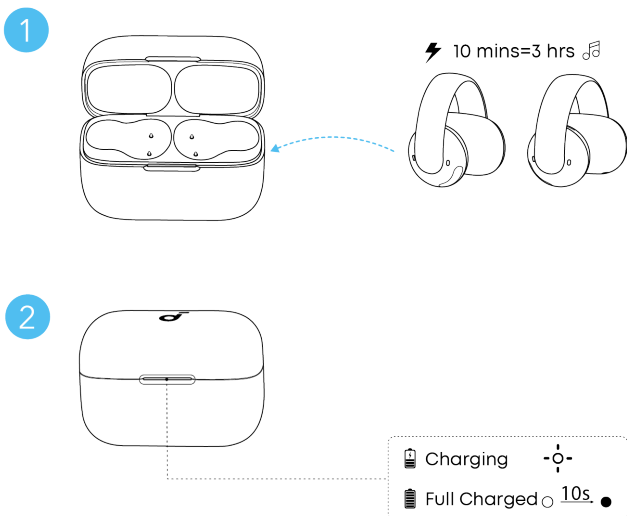
1. Remove the protective films from the earbuds.
 2. Return the earbuds to the case and close the case.
 3. Reopen the case to power on the earbuds and enter pairing mode. Select "soundcore AeroClip" from your device's Bluetooth list to connect.
- When pairing, the LED indicator will start flashing white. After the pairing is successful, the LED indicator will stay on for 2 seconds and then go off.

MANUAL PAIRING



- To manually enter Bluetooth pairing mode:
1. Return the earbuds to the charging case.
 2. Leave the case open, then press and hold the charging case button for 3 seconds until the LED indicator starts flashing white.
 3. The earbuds will enter pairing mode. Proceed to pair with your device.

CHARGING



1. Place the earbuds in the charging case and close it.
- Ensure the earbuds and the USB-C charging port are fully dry before charging.
2. Connect the charging case to a power supply using the provided USB-C charging cable.
- A full battery recharge of the charging case takes about 2 hours, and 10 minutes of charging offers 3 hours of playtime.

DUAL CONNECTIONS

To connect your earbuds with two Bluetooth devices at the same time, there are two methods:

Method 1: Manually Pair with the Second Device

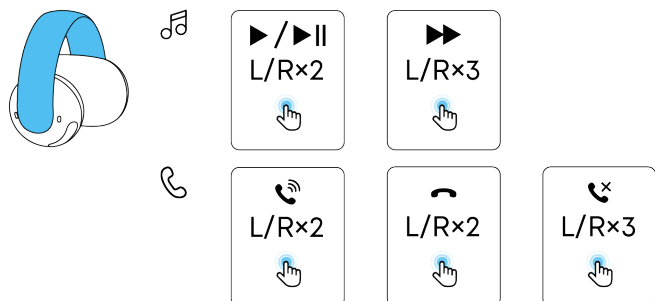
Place the earbuds into the charging case and keep the case open. Then, press and hold the charging case button for 3 seconds until the LED indicator flashes white rapidly. The earbuds will enter Bluetooth pairing mode, and you can proceed to pair them with the second device.



Method 2: Use the soundcore App


In the soundcore app, tap the cogwheel icon in the upper right corner to access Settings. Then select Dual Connections > Enable Dual Connections > Connect New Device.

 Dual Connections feature is enabled by default.

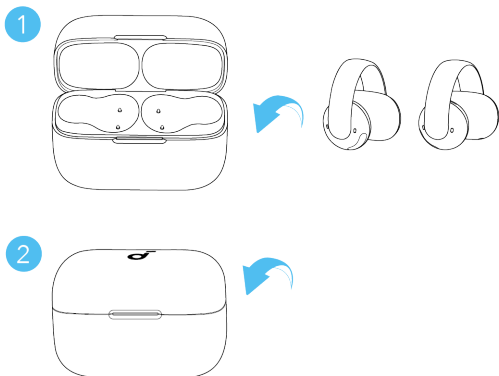
CONTROLS



	Play / Pause Audio	Double tap (L/R)
	Play the Next Track	Triple tap (L/R)
	Answer a Call	Double tap (L/R)
	Hang Up	Double Press (L/R)
	Reject a Call	Triple tap (L/R)

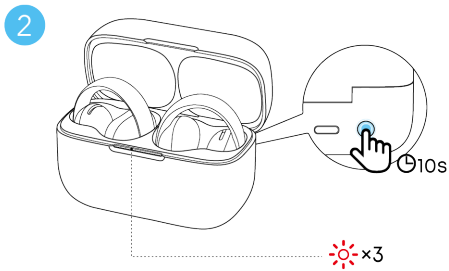
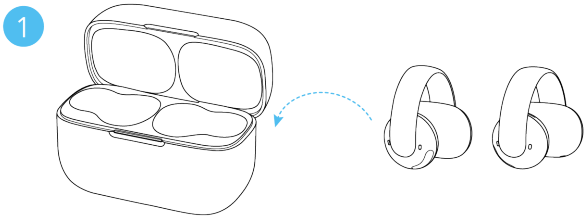
 You can also customize tap controls in the soundcore app. While tapping is supported on all areas of the device, it is recommended to tap the blue-highlighted area for improved stability.

POWERING OFF



To power off, return the earbuds to the charging case and close the case.

RESET



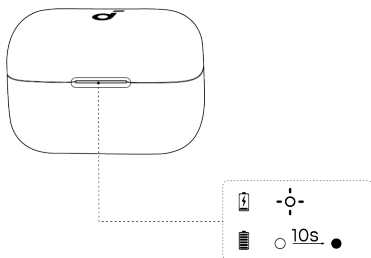
Reset the earbuds if they have functionality issues.

1. Return the earbuds to the charging case and leave the case open.

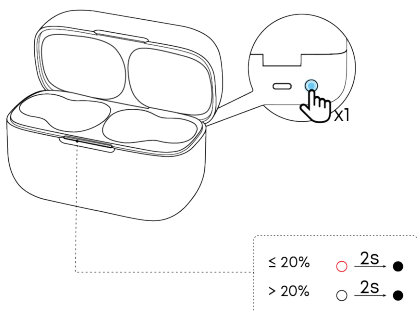
2. Press and hold the charging case button for 10 seconds until the LED indicator flashes red slowly three times, indicating a successful reset.

LED LIGHT GUIDE

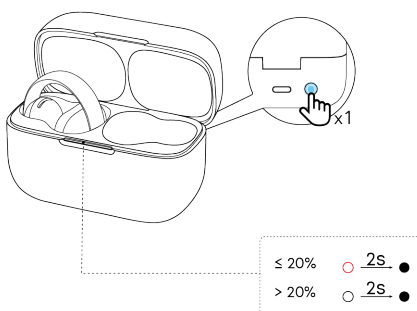
When you connect the charging case to a power source, the LED indicator will display the charging status.



When both earbuds are out of the charging case, press the charging case button to check the battery level of the charging case.



When either earbud is in the charging case, press the charging case button to check the battery level of a single earbud.



 When both earbuds are in the case, the battery level of the lower-powered earbud will be displayed.

FIRMWARE UPDATE

You will be notified once a new firmware version is detected when the earbuds are connected to the app. Ensure the earbuds are in the charging case and the case remains open until the firmware update is complete. Avoid using the earbuds during the update.



SPECS

Specifications are subject to change without notice.

Input	5V $\bar{\cdot}$ 1A
Output	5V $\bar{\cdot}$ 0.25A
Battery capacity	Earbud: 60mAh Charging Case: 580mAh
Playtime	Up to 8 hours

	(32 hours in total with the charging case)
Charging time	2h
Driver unit	12.8mm*12.8mm
Frequency response	20HZ-20KHZ
Impedance	16ohm
Waterproof rating (earbuds)	IPX4
Bluetooth version	5.4
Bluetooth range	15m

CUSTOMER SERVICE


 service@soundcore.com
 support.me@soundcore.com (For Middle East and Africa Only)
 support@anker.com (日本)
 support.kr@anker.com (한국)
 +1 (800) 988 7973 (US/Canada)
 +44 (0) 1604 936200 (UK)
 +49 (0) 69 9579 7960 (DE)
 03 4455 7823 (日本)
 +86 400 0550 036 (中国)
 +82 1666-8470 (한국)

 +971 8000320817 (UAE)
 +966 8008500030 (KSA)
 +965 22069086 (Kuwait)
 +20 8000000826 (Egypt)
 +90 (850) 460 14 14 (Türkiye)
 +8 (800) 511-86-23 (Russia)
 000-8000-504-414 (India)

Note: The 'x' of SN Code: xxxxxxxxxxxxxxxx is a variable, see below table.

Variable 'x'	Range of variable	Content
Eighth	8,9,A,B,C...	Denotes the year, 8 means 2018, 9 means 2019, A means 2020, B means 2021, C means 2022, and so on.
Ninth and tenth	01,02,03...	Denotes weeks, 01 means the first week in this year, 02 means the secondary week in this year, and so on.
Eleventh	1-7	Denotes date, 1 means Monday, 2 means Tuesday..., 7 means Sunday and so on.
The last five	00001-99999	Denotes serial No.

Hereby, Anker Innovations Limited declares that this device is in compliance with The Product Security and Telecommunications Infrastructure (Security Requirements for Relevant Connectable Products) Regulations 2023. For the Statement of Compliance, visit the website: <https://uk.soundcore.com/pages/psti-related>.