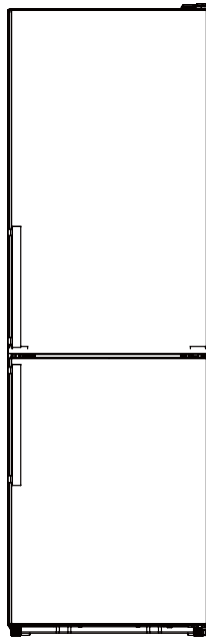




TWO-DOOR REFRIGERATOR WITH BOTTOM FREEZER



Model: FFBF235PL

User Manual

BEFORE USE, PLEASE READ AND FOLLOW ALL THE SAFETY RULES AND OPERATING INSTRUCTIONS.

Write Model and Serial Numbers here:

Model No.: _____

Serial No.: _____

Felix Storch, Inc.
An ISO 9001:2015 registered company
770 Garrison Ave
Bronx, New York 10474
www.summitappliance.com

Contents

Safety information and warnings	2	Helpful tips	13
Installing your new appliance	6	Cleaning and care	14
Description of the appliance	11	Disposal of the appliance	15
Control Panel	12		



Safety and warning information

For your safety and correct usage, read this user manual carefully before installing and using the appliance, including its hints and warnings. To avoid unnecessary mistakes and accidents, it is important to make sure that all persons using the appliance are thoroughly familiar with its operation and safety features. Save these instructions and be sure that they remain with the appliance if it is moved or sold so that anyone using it will be properly informed of its usage and safety notices. For safety, follow the precautions outlined in this user manual as the manufacturer is not responsible for damages caused by not following these instructions correctly.

Safety for children and other vulnerable people

- According to UL standard

This appliance is not intended for use by persons

(including children) with reduced physical, sensory, or mental capabilities, or lack of experience and knowledge, unless they have been given supervision or instruction concerning the use of the appliance by a person responsible for their safety.

- Children should be supervised to ensure that they do not

play with the appliance.

- Keep all packaging away from children as there is a risk of suffocation.
- If you are discarding the appliance, pull the plug out of the socket, cut the connection cable (as close to the appliance as you can), and remove the door to prevent children playing from suffering an electric shock or from closing themselves inside it.
- If this appliance, featuring a magnetic door seal, is to replace an older appliance that has a spring lock (latch) on the door or lid, be sure to render the spring lock unusable before you discard the old appliance. This will prevent a child from becoming trapped inside it.

CALIFORNIA CARB/SNAP DISCLOSURE

This product uses eco-friendly hydrocarbon refrigerant and fully complies with California CARB regulations.

However, we are required by California Law to provide the following disclosure statement in every product sold in California.

"This equipment is prohibited from use in California with any refrigerants on the 'List of Prohibited Substances' for that specific end-use, in accordance with California Code of Regulations, title 17, section 95374. This disclosure statement has been reviewed and approved by Felix Storch, Inc. and Felix Storch, Inc. attests, under penalty of perjury, that these statements are true and accurate."

This product does **not** use any refrigerants on the 'List of Prohibited Substances'"

General safety



● **WARNING** — This appliance is intended to be used in household and similar applications such as

- staff kitchen areas in shops, offices, and other working environments:
- farmhouses and hotels, motels, and other residential-type environments:
- Bed and breakfast type environments:
- Catering and similar non-retail applications.

● **WARNING** — Do not store explosive substances such as aerosol cans with a flammable propellant in this appliance.

● **WARNING** — If the power cord is damaged, it must be replaced by the manufacturer, its service agent, or similarly qualified persons to avoid a hazard.

- **WARNING** — Keep ventilation openings, in the appliance enclosure or in the built-in structure, clear of obstruction.
- **WARNING** — Do not use mechanical devices or other means to accelerate the defrosting process, other than those recommended by the manufacturer.
- **WARNING** — Do not damage the refrigerant circuit.
- **WARNING** — Do not use electrical appliances inside the food storage compartments of the appliance, unless they are of the type recommended by the manufacturer.
- **WARNING** — The refrigerant and insulation blowing gas are flammable. When disposing of the appliance, do so only at an authorized waste disposal center. Do not expose to flame.
- **WARNING** — When positioning the appliance, ensure the supply cord is not trapped or damaged.
- **WARNING** — Do not locate multiple portable sockets-outlets or portable power supplies at the rear of the appliance.

Replacing the lightbulbs

● **WARNING** — The lightbulbs must not be replaced by the user. If the lightbulbs are damaged, contact the customer helpline at **(718) 893-3900** or visit our <https://www.summitappliance.com/support>

Refrigerant

The refrigerant isobutane (R600a) is contained within the refrigerant circuit of the appliance, a natural gas with a high level of environmental compatibility, which is nevertheless flammable. During transportation and installation of the appliance, ensure that none of the components of the refrigerant circuit get damaged.

The refrigerant (R600a) is flammable.

● **WARNING** — Refrigerators contain refrigerant and gases in the insulation. Refrigerant and gases must be disposed of professionally as they may cause eye injuries or ignition. Ensure that the tubing of the refrigerant circuit is not damaged prior to proper disposal.

The symbol  is a warning and indicates the refrigerant and insulation-blowing gas are flammable. **WARNING: Risk of fire / flammable materials**

If the refrigerant circuit should be damaged:

-Avoid opening flames and sources of ignition.

-Thoroughly ventilate the room in which the appliance is situated.

It is dangerous to alter the specifications or modify this product in any way.

Any damage to the cord may cause a short circuit, fire, and/or electric shock.



Electrical safety

1. The power cord must not be lengthened.
2. Make sure that the power plug is not crushed or damaged. A crushed or damaged power plug may overheat and cause a fire.
3. Make sure that you can access the main plug of the appliance.
4. Do not pull the main cable.
5. If the power plug socket is loose, do not insert the power plug. There is a risk of electric shock or fire.
6. You must not operate the appliance without the interior lighting lamp cover.
7. The refrigerator is only applied with a power supply of single phase alternating current of 115V/60Hz. If the fluctuation of voltage in the district of the user is so large that the voltage exceeds the above scope, for safety's sake, be sure to apply an A.C. automatic voltage regulator of more than 350W to the refrigerator. The appliance should be plugged into a dedicated circuit and non-GFCI or ARC fault-protected outlet. Its plug must match the socket with the ground wire.

Daily use

- Do not store any flammable gases or liquids in the appliance, as it creates a risk of an explosion.
 - Do not operate any electrical appliances in the appliance (e.g., electric ice cream makers, mixers, etc.).
- When unplugging always pull the plug from the electrical socket, do not pull on the cable.
 - Do not place hot items near the plastic components of this appliance.
- Do not place food products directly against the air outlet on the rear wall.
 - Store pre-packed frozen food in accordance with the frozen food manufacturer's instructions.
 - The appliance manufacturer storage recommendations should be strictly adhered to. Refer to relevant instructions for storage.
 - Do not place carbonated or fizzy drinks in the freezer compartment as it creates pressure on the container, which may cause it to explode, resulting in damage to the appliance.
 - Frozen food can cause frost burns if consumed straight from the freezer compartment.
 - Do not place the appliance in direct sunlight.
 - Keep burning candles, lamps, and other items with naked flames away from the appliance so that do not set the appliance on fire.

- The appliance is intended for keeping food stuff and/or beverages in a normal household as explained in this instruction booklet. You should take care when moving it as the appliance is heavy.
- Do not remove or touch items from the freezer compartment if your hands are damp/wet, as this could cause skin abrasions or frost/freezer burns.
- Never use the base, drawers, doors, etc. to stand on or as supports.
- Frozen food must not be refrozen once it has been thawed out.
- Do not consume ice popsicles or ice cubes straight from the freezer as this can cause freezer burn to the mouth and lips.
- To avoid items falling and causing injury or damage to the appliance, do not overload the door racks or put too much food in the crisper drawers.
- This refrigerating appliance is not intended to be used as a built-in appliance.
- Keep medications away from the freezer compartment and away from the air vents to avoid the formation of ice crystals that can damage the medications. Do not store medications at the refrigerator door because they will be exposed to uneven temperatures every time the refrigerator door is opened.

Caution!

Care and cleaning

- Before maintenance, switch off the appliance and disconnect the mains plug from the mains socket.
- Do not clean the appliance with metal objects, steam cleaners, ethereal oils, organic solvents, or abrasive cleansers.
- Do not use a sharp object instead of a plastic scraper to remove frost from the appliance.

Installation - IMPORTANT!

- For electrical connection, carefully follow the instructions in this manual. Unpack the appliance and check if there are damages to it.
- Do not connect the appliance if it is damaged. Report damages immediately to the place you bought your unit from. In this case, retain packing.
- It is advisable to wait at least four hours before connecting the appliance to allow the oil to flow back into the compressor.
- Adequate air circulation should be around the appliance, lacking this leads to overheating. To achieve sufficient ventilation, follow the instructions relevant to installation.
- Wherever possible the back of the product should not be too close to a wall to avoid touching or catching warm parts (compressor, condenser) to prevent the risk of a fire, follow the instructions relevant to installation.
- The appliance must not be located close to radiators or other heat sources.
- Make sure that the mains plug is accessible after the installation of the appliance.

Service

- Any electrical work required to do the servicing of the appliance should be carried out by a qualified electrician or competent person.
- This product must be serviced by an authorized Service Center, and only genuine spare parts must be used.

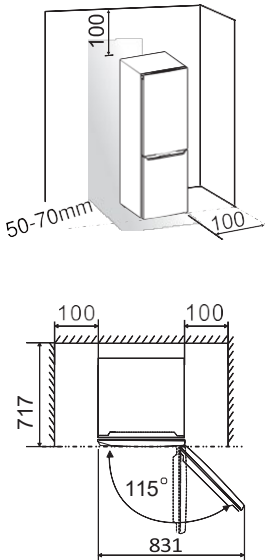
Installing your new appliance

Before using the appliance for the first time, you should be informed of the following tips.

Ventilation of appliance

To improve the efficiency of the cooling system and save energy, it is necessary to maintain good ventilation around the appliance for the dissipation of heat. For this reason, sufficient clear space should be available around the refrigerator.

Suggest: It is suggested that there be 50-70mm of space from the back to the wall, at least 100mm from its top, at least 100mm from its side to the wall, and a clear space up front to allow the doors to open 115°. As shown below:

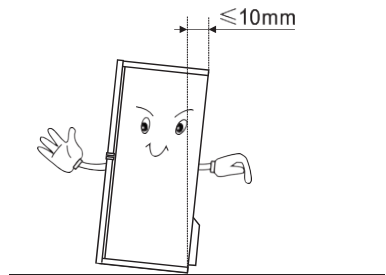


Note:

- This appliance is intended to operate in the climate class from 55~110°F. It may not work properly if being left at a temperature above or below the indicated range for a long period.
- Install your appliance in a dry place to avoid high moisture.
- Keep the appliance out of direct sunlight, rain, or frost. Place the appliance away from heat sources such as stoves, fires, or heaters.

Leveling of appliance

- For sufficient leveling and air circulating in the lower rear section of the appliance, the bottom feet may need to be adjusted. You can adjust them manually by hand or by using a suitable wrench.
- To allow the doors to self-close, tilt the top backward by about 10mm.







Reversing the door

The side at which the door opens can be changed, from the right side (as supplied) to the left side, if the installation site requires it.

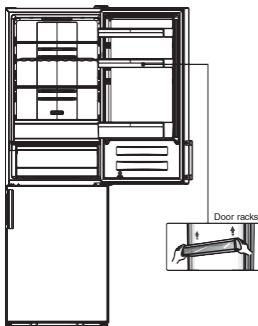
WARNING: Unplug the unit from the outlet.

TOOLS NEEDED

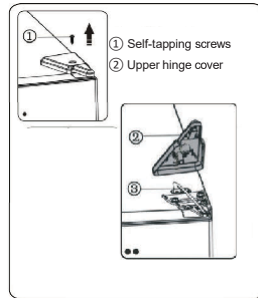
Not provided	
	
8mm socket wrench	Thin-blade screwdriver
	
Cross-shaped screwdriver	8mm wrench

● Tilt the refrigerator backward to access the base, you should rest the appliance on soft foam packaging or similar material to avoid damaging the backboard of the refrigerator. To reverse the door, follow the steps below. Different models may correspond to different pictures. Models will be written in the picture. If some parts are not shown in the picture, ignore the relevant description.

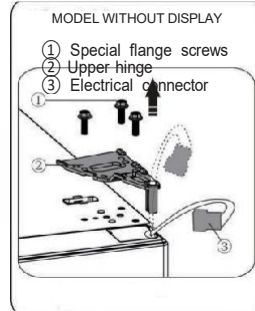
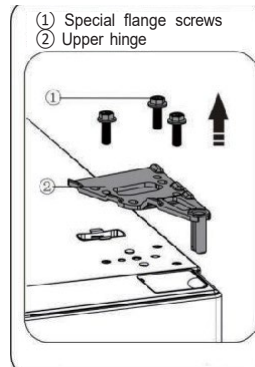
1. Stand the refrigerator upright. Open the upper door to take out all door racks (to avoid the racks being damaged) and then close the door.



2. Remove part ①, loosen part ② from the top right side of refrigerator.



3. Remove screws ① and hinge ②. When the refrigerator with a display on the door, you need to pass connector ③ through the hole of the hinge ②. (Hold the upper door by hand when installing).



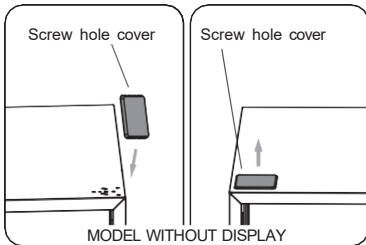
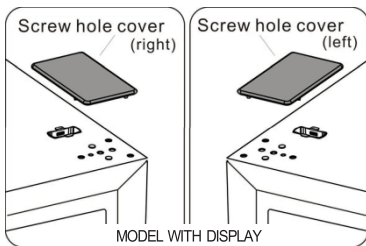
MODEL WITH DISPLAY

4. Remove the upper door from the middle hinge by carefully lifting the door straight up. Then place the upper door on a smooth surface with its upper cover facing upwards.

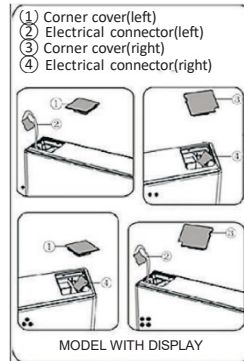


5. With a refrigerator with an LED display on the door, take the screw hole cover(right) from the plastic bag and install it onto the top right side of the refrigerator body. Then remove the screw hole cover (left) from the top left side of the appliance and put it into the plastic bag.

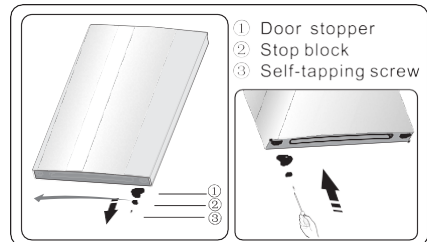
If the refrigerator does not have an LED display on the door, pull out the screw hole cover from the left side uprightly, and place it on the right side.



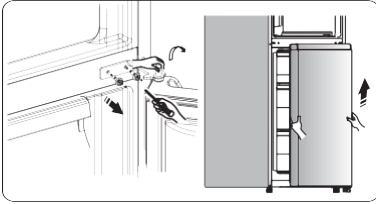
6. If the refrigerator with a display on the door, remove part ① from the top left side of the upper cover and take out part ②. Then remove part ③ and put part ④ into the top right side of the upper cover. Refer to the above operation, install part ③ and part ④ on the top left side of upper cover. Install part ① of the top right side of the upper cover. When the refrigerator is without a display on the door, skip this step.



7. Loosen screw ③ and take down parts ② and ①, install replacement door stopper-left ④ provided (in the plastic bag) and part ② (stop block) to the left side with screw ③. Keep part ① with the appliance for future reference.



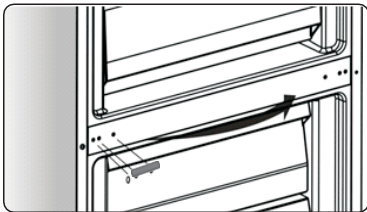
8. Loosen the screws used to affix the middle hinge and remove the middle hinge. Then remove the lower door.



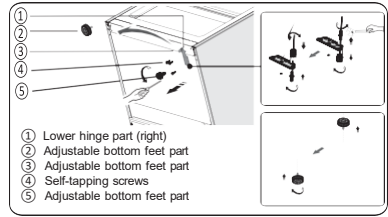
9. Place the lower door on a smooth surface with its panel upwards. Loose screw ③ and take down part ② and part ①, install replacement door stopper-left ④ provided (in the plastic bag), and part ② (stop block) to the left side with screw ③. Keep part ① with the appliance for future reference.



10. Change screw hole covers on the middle cover plate from left to right (as shown in the figure below).

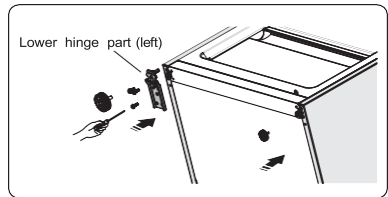


11. Tip the refrigerator backward and remove part ②.

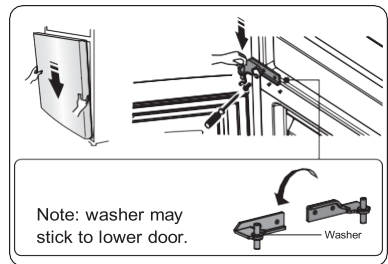


12. Remove part ③ from the lower hinge pin, loose out the lower hinge pin, change it to the reverse hole site, and then tighten into position, then install part ③ on the lower hinge pin.

13. Replace the items remount in step 11, change part ① to left, and then fix them with screws ④. Install part ② at last.

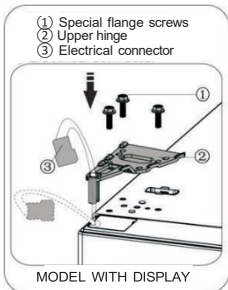
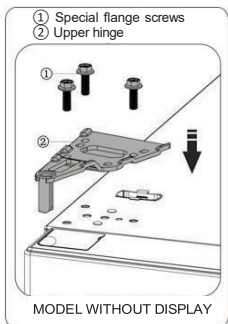


14. Slot the lower door onto the bottom hinge pin and hold it in position. Turn the middle hinge 180°, change the washer on the axis to the lower side, adjust the middle hinge to the appropriate position, and then install it ensuring the lower door is in place.

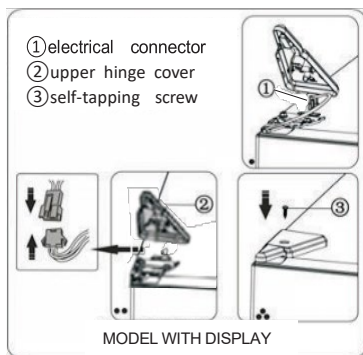


15. Move the upper door to an appropriate position, and then fix

part ② by screws ①. Before fixing part ②, pass connector ③ through hinge ② refer to step 3. (Please hold the upper door by hand when installing)



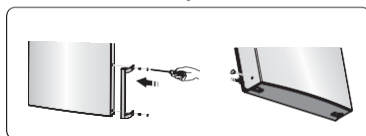
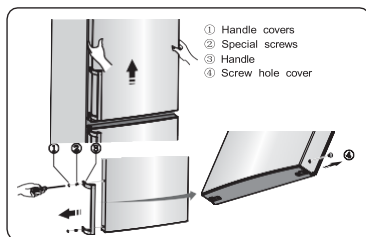
16. Connect electrical connector ① as shown in the picture, then fix part ② by screw ③ refer to step 2.



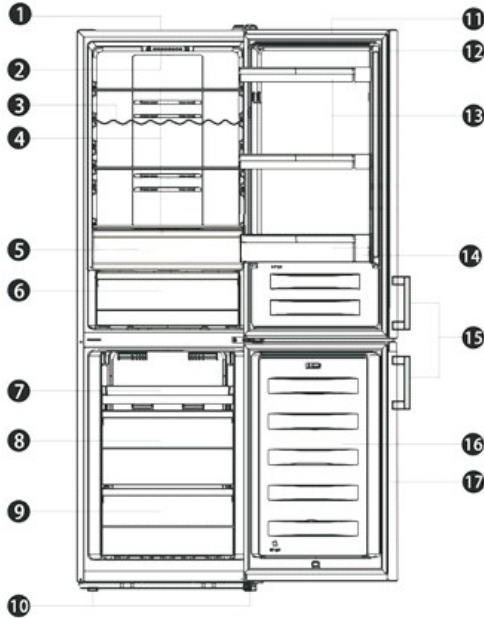
17. Open the upper door, mount door racks, and then close it.

NOTE:

If your model has handles, you must reverse handles by following the instructions below. Remove the upper door and place it on a smooth surface with its panel upwards. Lever part ① and part ④, then loose screws ②, as shown in the picture. Change the handle ③ to the right side, then install screws ②, part ① and part ④ in turn.



Description of the appliance



- | | |
|---------------------------------------|----------------------------------|
| 1. Cabinet | 10. Adjustable feet |
| 2. LED lights & thermostat control | 11. Refrigerator door |
| 3. Wine refrigerator shelf (optional) | 12. Refrigerator door gasket |
| 4. Glass refrigerator shelves | 13. Upper refrigerator door bins |
| 5. Upper refrigerator crisper | 14. Lower door bin |
| 6. Refrigerator crisper | 15. Handles (optional) |
| 7. Upper freezer drawer | 16. Freezer door |
| 8. Middle freezer drawer | 17. Freezer door gasket |
| 9. Lower freezer drawer | |

NOTE:

- Due to our commitment to continuous product improvement, all specifications are subject to change without notice.
- To get the best energy efficiency out of this product, please place all shelves, drawers, and baskets in their intended position as shown in the illustration above.

Control Panel

Your appliance has the corresponding functions and modes as the display panel shows in the pictures below.

When the appliance is powered on for the first time, the backlights of the icons on the display panel will turn on. If no buttons have been pressed and the doors are closed, the backlight will turn off



Controlling the temperature

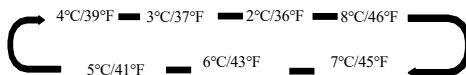
We recommend that when you start your refrigerator for the first time, the temperature for the refrigerator is set to 39°F. If you want to change the temperature, follow the instructions below.

Caution!

When you set a temperature, you set an average temperature for the whole refrigerator cabinet. Temperatures inside each compartment may vary from the temperature values displayed on the panel, depending on how much food you store and where you place it. Ambient temperature may also affect the actual temperature inside the appliance.

Press "**C/F**" to set the refrigerator temperature between 36°F and 46°F as

needed; the display panel will show corresponding values according to the following sequence.



Super Freeze (❄️)

Super Freeze will quickly lower the temperature within the freezer so the food will freeze faster. This can lock in the vitamins and nutrients of fresh food and keep food fresh for longer. You can press "**C/F**" for 3 seconds to activate Super Freeze mode.

When Super Freeze mode is selected, the light will turn on and the freezer temperature will be set at -11°F.

In case you have a large amount of food to freeze, please wait around 24 hours before loading the freezer.

Super Freeze automatically switches off after 52 hours and then the freezer temperature will revert to the previous setting.

Switch On/Off (🔌)

You can switch on or off your appliance by pressing this button.

Press the power button for 3 seconds and, after a buzzer sound, the appliance will turn off.

Press the power button for 1 second and, after a buzzer sound, the appliance will turn on.

Helpful tips

Energy saving tips

We recommend that you follow the tips below to save energy.

- Try to avoid keeping the door open for long periods to conserve energy.
- Ensure the appliance is away from any sources of heat (Direct sunlight, electric oven, cooker, etc.).
- Do not set the temperature colder than necessary.
- Do not store warm food or evaporating liquid in the appliance.
- Place the appliance in a well-ventilated, humidity-free room.
- The diagram shows the correct combination for the drawers, crisper, and shelves, do not adjust the combination as this is designed to be the most energy-efficient configuration.

Tips for fresh food refrigeration

- Do not place hot food directly into the refrigerator or freezer, the internal temperature will increase resulting in the compressor having to work harder and consume more energy.
- Do cover or wrap the food, particularly if it has a strong flavor.
- Place food properly so that air can circulate freely around it.

Tips for refrigeration

- Meat (All Types): wrap in polythene and place on the glass shelf above the vegetable drawer. Always follow food storage times and use dates suggested by manufacturers.
- Cooked food, cold dishes, etc.: They should be covered and may be placed on any shelf.
- Fruit and vegetables: They should be stored in the special drawer provided.
- Butter and cheese: Should be wrapped in airtight foil or plastic film wrap.

● Milk bottles:

Should have a lid and be stored in the door racks.

Tips for freezing

- When first starting up or after a period out of use, let the appliance run for at least 2 hours on the higher settings before putting food in the compartment.
- Prepare food in small portions to enable it to be rapidly and completely frozen and to make it possible to subsequently thaw only the quantity required.
- Wrap up the food in aluminum foil or polyethylene food wraps which are airtight.
- Do not allow fresh, unfrozen food to touch the food which is already frozen to avoid the temperature rise of the latter.
- Iced products, if consumed immediately after removal from the freezer compartment, will probably cause frost burns to the skin.
- It is recommended to label and date each frozen package to keep track of the storage time.

Tips for the storage of frozen food

- Ensure that frozen food has been stored correctly by the food retailer.
- Once defrosted, food will deteriorate rapidly and should not be re-frozen. Do not exceed the storage period indicated by the food manufacturer.

Switching off your appliance

If the appliance needs to be switched off for an extended period, the following measures must be taken to prevent mold growth on the appliance.

1. Remove all food.
2. Remove the power plug from the electrical socket.
3. Clean and dry the interior thoroughly.
4. Ensure that all the doors are wedged open slightly to allow air to circulate.

Compartments	Target storage temp. [°F]	Food that should be stored in the compartment:
Refrigerator	+36~+46	Eggs, cooked food, packaged food, fruits and vegetables, dairy products, cakes, drinks, and other foods which are not suitable for freezing.
Freezer	≤ 0	Seafood (fish, shrimp, shellfish), freshwater aquatic products, and meat products (recommended for 3 months, the longer the storage time, the worse the taste and nutrition), suitable for frozen fresh food.
	≤ 0	Seafood (fish, shrimp, shellfish), freshwater aquatic products, and meat products (recommended for 3 months, the longer the storage time, the worse the taste and nutrition), are not suitable for frozen fresh food.
	$\leq +10$	Seafood (fish, shrimp, shellfish), freshwater aquatic products, and meat products (recommended for 2 months, the longer the storage time, the worse the taste and nutrition), are not suitable for frozen fresh food.
	$\leq +21$	Seafood (fish, shrimp, shellfish), freshwater aquatic products, and meat products (recommended for 1 month, the longer the storage time, the worse the taste and nutrition), are not suitable for frozen fresh food.
	+21~+36	Fresh pork, beef, fish, chicken, some packaged processed foods, etc. (Recommended to eat within the same day, preferably no later than 3 days). Partially encapsulated processed foods (non-freezable foods).
Chill	+28~+37	Fresh/frozen pork, beef, chicken, freshwater aquatic products, etc. (below 32°F for 7 days above 32°F is recommended for consumption within the day and preferably for no more than 2 days). Seafood (less than 32°F for 15 days it is not recommended to store seafood above 32°F).
Fresh Food	+32~+39	Fresh pork, beef, fish, chicken, cooked food, etc. (Recommended to eat within the same day, preferably no more than 3 days).
Wine	+41~+68	Red wine, white wine, sparkling wine, etc.

NOTE: Please store different foods according to the compartments or target storage temperature of your purchased products.

If the refrigerating appliance is left empty for long periods, switch it off, defrost it, clean, dry, and leave the door open to prevent mold from developing within the appliance.

To avoid contamination of food, please respect the following instructions:

- Opening the door for long periods can cause a significant increase in the temperature in the compartments of the appliance.
- Regularly clean surfaces that can come in contact with food and accessible drainage systems.
- Store raw meat and fish in suitable containers in the refrigerator, so that it is not in contact with or drips onto other food.

Cleaning and care

For hygienic reasons the appliance (including exterior and interior accessories) should be cleaned regularly (at least every two months).

Warning!

The appliance must not be connected to the mains during cleaning as there is a danger of electrical shock! Before cleaning, switch the appliance off and remove the plug from the electrical socket.

Exterior cleaning

To maintain the good appearance of your appliance, you should clean it regularly.

- Wipe the control panel with a clean, soft cloth.
- Spray water onto the cleaning cloth instead of spraying directly on the surface of the appliance. This helps ensure an even distribution of moisture to the surface.
- Clean the doors, handles, and cabinet surfaces with a mild detergent and then wipe dry with a soft cloth.

CAUTION!

- Do not use sharp objects as they are likely to scratch the surface.
- Do not use thinners, car detergent, Clorox, ethereal oil, abrasive cleaners, or an organic solvent such as Benzene for cleaning. They may damage the surface of the appliance and may cause a fire.

Interior cleaning

You should clean the appliance interior regularly. It will be easier to clean when food stocks are low. Wipe the inside of the refrigerator freezer with a weak solution of bicarbonate of soda, and then rinse with warm water using a wrung-out sponge or cloth. Wipe completely dry before replacing the shelves and baskets.

Thoroughly dry all surfaces and removable parts before putting them back into place.

Although this appliance automatically

defrosts, a layer of frost may occur on the freezer compartment's interior walls if the freezer door is opened frequently or kept open too long. If the frost is too thick, choose a time when the freezer is nearly empty and proceed as follows:

1. Remove existing food and accessories baskets, unplug the appliance from the outlet, and leave the doors open. Ventilate the room thoroughly to accelerate the process.
2. When defrosting is completed, clean your freezer as described above.

Caution!

Do not use sharp objects to remove frost from the freezer compartment. Only after the interior is completely dry should the appliance be switched back on and plugged back into the mains socket.

Door seals cleaning

Take care to keep door seals clean. Sticky food and drinks can cause seals to stick to the cabinet and tear when you open the door. Wash the seal with a mild detergent and warm water. Rinse and dry it thoroughly after cleaning.

Caution! Only after the door seals are completely dry should the appliance be powered on.

Replacing the LED light:

Warning: The LED light must not be replaced by the user. If the LED light is damaged, contact the customer helpline at **(800) 932-4267** for assistance between 9:00AM and 5:00PM or visit <https://www.summitappliance.com/support> at any time.

Disposal of the appliance

It is prohibited to dispose of this appliance as household waste.


Packaging materials

Packaging materials with the recycle symbol are recyclable. Dispose of the packaging into a suitable waste collection container to recycle it.

Before disposal of the appliance

1. Pull out the power plug from the electrical outlet.
2. Cut off the power cord and discard it with the power plug.

Warning! Refrigerators contain refrigerant and gases in the insulation. Refrigerant and gases must be disposed of professionally as they may cause eye injuries or ignition. Ensure that the tubing of the refrigerant circuit is not damaged prior to proper disposal.

Correct Disposal of this product	
	<p>This symbol on the product or in its packaging indicates that this product may not be treated as household waste. Instead, it should be taken to the appropriate waste collection point for the recycling of electrical and electronic equipment. By ensuring this product is disposed of correctly, you will help prevent potential negative consequences for the environment and human health, which could otherwise be caused by the inappropriate waste handling of this product. For more detailed information about the recycling of this product, please contact your local council your household waste disposal service, or the shop where you purchased the product.</p>

LIMITED WARRANTY

ONE-YEAR LIMITED WARRANTY

Within the 48 contiguous United States, for one year from the date of purchase, when this appliance is operated and maintained according to instructions attached to or furnished with the product, warrantor will pay for factory-specified parts and repair labor to correct defects in materials or workmanship. Service must be provided by a designated service company. Outside the 48 states, all parts are warranted for one year from manufacturing defects. Plastic parts, shelves and cabinets are warranted to be manufactured to commercially acceptable standards and are not covered from damage during handling or breakage.

5-YEAR COMPRESSOR WARRANTY

1. The compressor is covered for 5 years.
2. Replacement does not include labor.

ITEMS WARRANTOR WILL NOT PAY FOR:

1. Service calls to correct the installation of your appliance, to instruct you how to use your appliance, to replace or repair fuses or to correct wiring or plumbing.
2. Service calls to repair or replace appliance light bulbs or broken shelves. Consumable parts (such as filters) are excluded from warranty coverage.
3. Damage resulting from accident, alteration, misuse, abuse, fire, flood, acts of God, improper installation, installation not in accordance with electrical or plumbing codes, or use of products not approved by warrantor.
4. Replacement parts or repair labor costs for appliances operated outside the United States.
5. Repairs to parts or systems resulting from unauthorized modifications made to the appliance.
6. The removal and reinstallation of your appliance if it is installed in an inaccessible location or is not installed in accordance with published installation instructions.

DISCLAIMER OF IMPLIED WARRANTIES – LIMITATION OF REMEDIES

CUSTOMER'S SOLE AND EXCLUSIVE REMEDY UNDER THIS LIMITED WARRANTY SHALL BE PRODUCT REPAIR AS PROVIDED HEREIN. IMPLIED WARRANTIES, INCLUDING WARRANTIES OF MERCHANTABILITY OR FITNESS FOR A PARTICULAR PURPOSE, ARE LIMITED TO ONE YEAR. WARRANTOR SHALL NOT BE LIABLE FOR INCIDENTAL OR CONSEQUENTIAL DAMAGES. SOME STATES DO NOT ALLOW THE EXCLUSION OR LIMITATION OF INCIDENTAL OR CONSEQUENTIAL DAMAGES, OR LIMITATIONS ON THE DURATION OF IMPLIED WARRANTIES OF MERCHANTABILITY OR FITNESS, SO THESE EXCLUSIONS OR LIMITATIONS MAY NOT APPLY TO YOU. THIS WARRANTY GIVES YOU SPECIFIC LEGAL RIGHTS AND YOU MAY ALSO HAVE OTHER RIGHTS, WHICH VARY FROM STATE TO STATE.



WARNING: This product can expose you to chemicals including Nickel (Metallic) which is known to the State of California to cause cancer.

For more information go to www.P65Warnings.ca.gov

Note: Nickel is a component in all stainless steel and some other metallic compositions.

Felix Storch, Inc.
An ISO 9001:2015 registered company
770 Garrison Ave
Bronx, New York 10474
www.summitappliance.com

SUMMIT®

For parts and accessory ordering,
troubleshooting and helpful hints, visit:
www.summitappliance.com/support