

# Haier

TOP LOAD FULLY AUTOMATIC WASHING MACHINE  
OWNER'S MANUAL

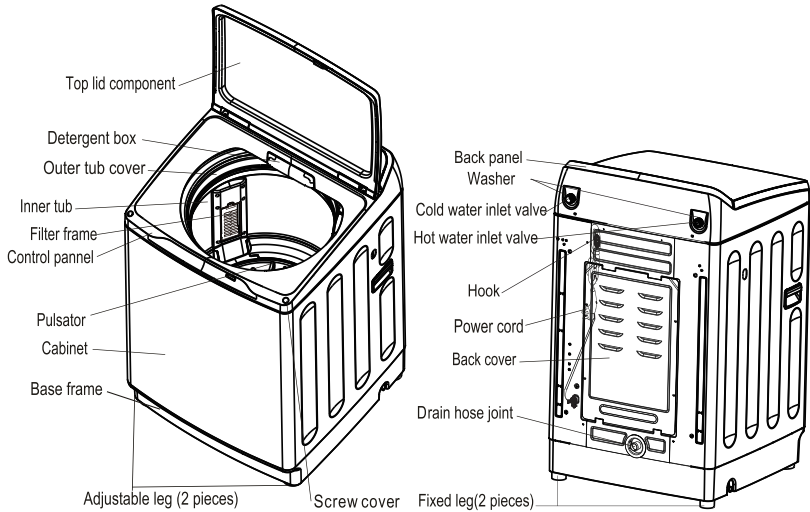
MODEL: HWT90MW2  
HWT80MW2

Please read this manual carefully before operating your washing machine and retain it for future reference.



# CONTENTS

● Product overview .....	1
● Safety precautions.....	2-3
● Installation and adjustment.....	4
● Installation of drainage hose.....	5
● Installation of water inlet hose.....	6
● Before washing.....	7
● Loading your laundry.....	8
● Detergent usage guide.....	8
● Operation & wash cycles .....	9-13
● Maintenance.....	14
● Trouble-shooting.....	15-16
● Packing list.....	17
● Specifications .....	18

# Product Overview



## Description of symbols

<p>Warning sign</p> 	<p>Contents marked with this symbol are related to the safe use of the product and the personal safety of the user. Please operate in accordance to the contents of this manual, to avoid harm to the user or damage to the machine itself.</p>
<p>Forbidden sign</p> 	<p>Contents marked with this symbol indicate operations or actions that should not be undertaken by the user. Performing of such actions may result injury to the user or damage to machine itself, and void warranty.</p>

### SAFETY WARNING

Please check power socket condition to ensure it has been earthed correctly prior to installation to ensure your safety

# Safety Precautions

## Warning

A separate, earthed power socket is required for the power supply. Hold the plug - NOT the electric cable - when unplugging the washing machine. Do not insert or remove the power plug with wet hands. After installation of the washing machine, the power plug should be accessible.



Ensure the plug is removed and the taps turned off in the following cases: Power failure, cleaning, moving, installation and when not in use.



If the supply cord is damaged, it must be replaced by a special cord or assembly available from the manufacturer or its service agent.



## Forbidden

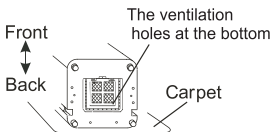
Do not install this appliance in a damp or wet environment. Do not leave wet laundry on the Control Panel or spray water directly on to this appliance, as this may cause the washer to malfunction or cause an electrical fault.



Do not connect to hot water higher than 50°C temperature



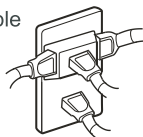
The openings must not be obstructed by a carpet



Do not wash water-proof clothing as this may affect load balance during spin cycle(s)



If you are using an extension cord or a portable electrical outlet device (not recommended), ensure that it is positioned so that it does not come into contact with water or moisture



# Safety precautions

Do not attempt to move washing or place hands inside washing machine while in operation. Please ensure children are supervised around machine to avoid harm.



Do not take apart, repair or alter the machine by yourself.



Do not leave hot or heavy items on lid or control panel as this may cause damage to the washer or make the washer unsafe to operate

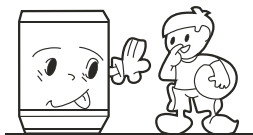


Do not wash laundry with chemicals or other volatile materials (such as petrol, solvents or thinners) as this may cause damage to the machine.

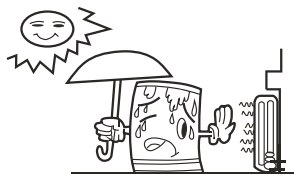


This appliance is not intended for use by persons (including children) with reduced physical, sensory or mental capabilities, or lack of experience and knowledge, unless they have been given supervision or instruction concerning use of the appliance by a person responsible for their safety.

Children should be supervised to ensure that they do not play with the appliance.

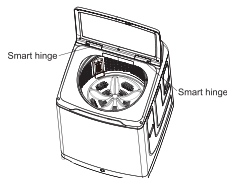


Keep washer away from heat sources such as heaters, stoves or direct sunlight.



- If power cord or other parts of this machine become damaged or faulty, please contact a technician to have it repaired. **DO NOT** attempt repairs yourself as this may cause personal harm or void warranty.

- Smart hinge prevents sudden closing of the door. Door is heavy, be careful while closing of the door. Do not let your hands or any other material to caught below door. It might cause injury or damage. Door closing time is dependent on ambient temperature. Higher the ambient temperature, lower the door closing time and vice versa. Smart Closing Door performs best when lid is closed from full open condition.



# Installation & Adjustment

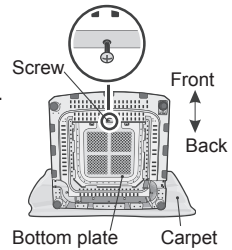
Please install and adjust the machine according to the directions contained in this manual. It is very important to follow these directions for the safe operation of the machine, and to ensure your machine operates correctly.

## Install the bottom plate

The purpose of the bottom plate is to suppress noise from the washing machine during operation.

Steps:

- 1.Lay the washer on its back, on a non-abrasive surface.
- 2.Insert the bottom plate to the bottom of the machine.
- 3.Use a screwdriver to tighten the screw (in accessory bag) securing the plate to bottom of the washer
- 4.Once the screw is tight and the plate is secure, return the washer to its standing position.

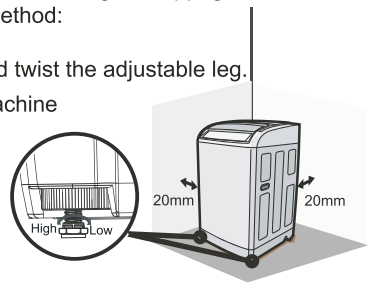


## Balance washing machine

Do not install this machine on an incline greater than  $2^\circ$ . Installing machine on an angle or on rough ground will result in unstable running or stoppage of the machine. Please adjust it by the following method:

- 1.Confirm it is level
- 2.Lift up the side of the machine slightly and twist the adjustable leg.

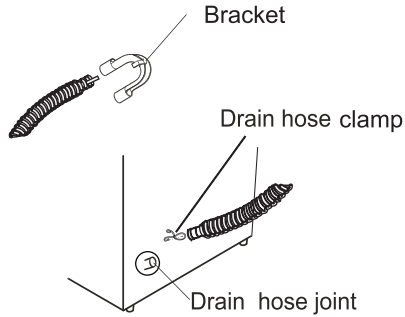
Note: The distance between the washing machine and wall should be at least 20mm



# Installation of drainage hose

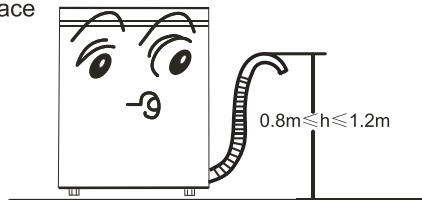
## Install drainage hose

- First connect the drainage hose to the connection point on the lower back side of the cabinet and fasten with drain hose clamp(provided).
- Connect drain hose guide on to the outside of drainage hose. To guide the drain hose over the tub or standpipe, the bracket MUST be fitted to the drain hose .



## Placement of Drainage Hose

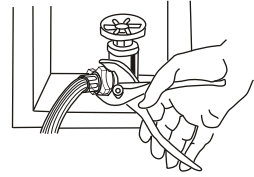
- The height of the standpipe or tub should be between 800 - 1200 mm. To avoid syphoning, the drain hose should not be submerged in the water.
- Ensure drainage hose is held in place to avoid leaks or spills.



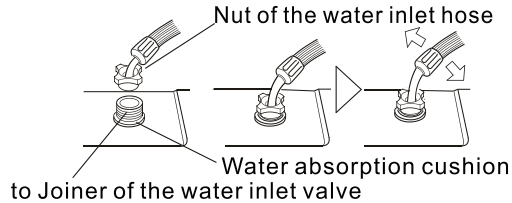
# Installation of water inlet hoses

**NOTE: Use the new inlet hoses supplied, do not reuse old hoses.**

1. Connect the water inlet hose to the water faucet. You may have to use pliers to tighten the coupling. Do not over tighten as this may cause damage to the valve or hose fittings.



2. Connect the other ends to their respective cold and hot water inlet valves located on the top of the washer.



3. Fasten each hose on the washing machine, and ensure a tight connection.

## Check the inlet hose connections

1. Swing the hose gently to confirm that the hose is securely fastened.
2. After installation, open the tap to check for leaks.
3. Do not bend the hose unduly.
4. Periodically check the hose connections are firm at both ends. This is to ensure the connections remain watertight over time.



## Removing the water inlet hoses

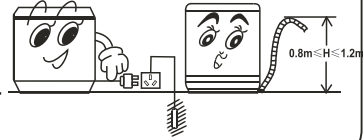
1. Turn off the water taps.
2. Loosen each connection at water taps and washer.
3. Carefully remove each hose separately, as they may contain residual water.

# Before washing



## Preparation

1. Ensure the water inlet hoses are correctly installed and faucets are turned on.
2. Insert the power plug into the electrical socket.
3. Ensure the drain hose is mounted at the correct height.
4. Select a suitable location for the washer on a hard, even surface.
5. Any floor unevenness may result in unstable working or abnormal noise. Please ensure the machine is level.



## Check the following before washing

Clear the pockets, and take out loose items such as coins, sand, hairpins etc.



Tie any long straps or strings, fasten buttons and close zippers.



The weight of the laundry shall not exceed the rated capacity of your machine, loosen the laundry before placing it evenly in the tub.



When the machine is running, buttons may cause noise. To reduce the noise, turn clothes inside out or place them in a laundry bag.



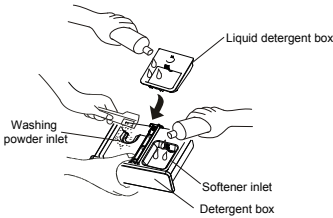
- a. Check if the laundry has any special washing instructions.
- b. Divide the laundry into colour fast and non-colour fast items.
- c. Separate items that do not absorb water easily and wash by hand.
- d. For heavily soiled items, please first remove loose dirt, then apply detergent directly (as per instructions on pack) to the stain before washing.
- e. For those items that may attract lint or are furry or fluffy, please turn inside out before washing.
- f. Do not put laundry soiled with chemicals or solvents into the washing machine.

# Loading your laundry



- The rated washing capacity refers to the largest dry weight of a load that can be washed.
- The thickness, size and type of clothes will influence the actual capacity.
- Do not select more than water Level “Mid” for clothes less than 1.0kg, to avoid splashing of water.
- It is recommended that low suds/ high efficiency washing powder is used.

## Detergent Usage Guide



### How to use liquid detergent

Put the liquid detergent box on the right of the detergent box. See the above figure.  
Before washing put the liquid detergent into the liquid detergent box directly as indicated in the above figure. The usage and dose of the liquid detergent as per the specifications of liquid detergent.

### How to use softener

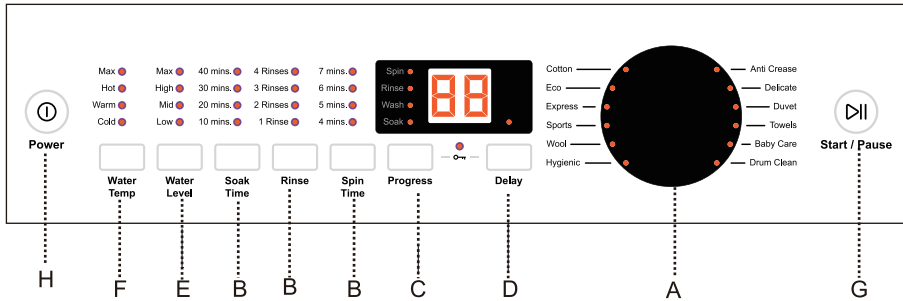
- The usage and dose of the softener as per the specifications of softener.
- Before washing put the softener into the detergent box directly. See the above figure. The softener will put into the washer when the last rinsing.
- After that, please close the detergent box refer to the following list for the usage of the detergent: selection of the water level, water quantity and dosage of detergent
- After the softener is put in, please don't place for a long time otherwise softener may solidify and cause flowing not smooth.
- When water pressure is too low, it is possible that softener cannot be washed away effectively, and softener would be agglomerated after a period of time. Please clean the softener box in time. It is recommended to pour the softener into the basket directly after water is filled at the last rinse.

### Adding washing power

- It is suggested to dissolve detergent before adding to the tub, see as below:
  1. Prepare warm water (<35 °C) in a container.
  2. Add washing powder, stirring to dissolve it completely.
- **Adding washing powder Fuzzy Logic Programs**  
Add washing powder/liquid into the detergent box directly for "Fuzzy logic" programs and "Delay" program.
- **Adding washing powder Cotton Wash**  
It is recommended that washing powder/liquid is dissolved with water and then directly emptied into the washing machine:
  1. Add some water (select the "Low" water level)
  2. Add washing powder/liquid. Run for about 30 seconds to fully dissolve the detergent. Then push the "Start/Pause" button to pause the wash cycle.
  3. Load laundry. Select suitable water level. Push the "Start/Pause" button again to recommence washing cycle
- If you select "Express" program, it is recommended to use liquid detergent instead of washing powder to ensure the most effective wash results.
- Old or poor quality washing powder may cause caking in tub or detergent dispenser.
- When water pressure is too low, it is possible that washing powder or washing liquid cannot be washed away effectively, and washing powder or washing liquid would be agglomerated after a period of time. Please clean the detergent box in time. It is recommended to pour the washing powder or liquid into the basket directly.

Note: If a manufacturer specifies only the use of a low-sudsing or high-efficiency type detergent, then detergent for drum type machines shall be used irrespective of the type of machine under test. Otherwise the detergent type to be used shall be chosen according to the type of clothes washing machine under test, as follows.

# Operation & Wash Cycles



## Indicator display

- Off
- On: Indicates the program is about to run and indicates the selected cycle and options
- : Flashing: Indicates the program is running and indicates the selected cycle and options

## Display

- Displays total time remaining during current, in progress wash cycle
- Displays remaining time when the "Delay" program is used (hours)
- Displays error codes (see page 15)

Page 15

## A "Cycle" knob

Program	Recommend
Cotton	Washing Cotton laundries
Eco	The cycle of energy saving
Express	Lightly soiled or small laundry loads less than 1.5kg
Sports	Washing Sports clothes
Wool	Machine washable woollen items
Hygienic	Hygienic Washing
Anti Crease	Washing T-shirts, shirts laundries
Delicate	Delicate items that are machine washable
Duvet	Washing Duvet
Towels	Washing Towels
Baby Care	Washing Synthetic laundries
Drum Clean	Cleaning the inner and outer tub to avoid the growth of mildew

# Operation & Wash Cycles

## B “Soak Time” “Rinse” “Spin Time” buttons

- You may change the Soak time, Rinse and Spin time, except Express, Wool, Anti Crease.

## C “Progress” buttons

- You may change the Progress, Except Wool, Anti Crease, Drum Clean, Express and Duvet cycles are selected.

## D “Delay” button

- The display shows the time remaining (in minutes) before the cycle will finish.
- Push the "Delay" button and the display will show the remaining time for the cycle to finish (in hours). The indicator flashes to indicate that the delay function is operating.
- Delay start can be set for 2-24hr operation.
- **NOTE:** The delay time is until the selected wash program finishes (you will need to deduct wash time from this delay time to calculate when the wash will start).

## E “Water Level” button

- During the Eco and Cotton programs the washing machine will detect the size of the laundry and automatically select the water level between levels Mid, High or Max.
- To change the water level, press the Start/Pause button and make your selection by pressing the “Water Level” button until desired level is shown.
- If there is water inside the tub and the machine cannot detect the laundry load, it will display water level “Mid”. If wet laundry is put in the machine, it will display level “Mid”, you can then manually adjust to the desired water level.
- If Express program is selected it will display water level “Low” you can then manually adjust to the desired water level.
- If Drum Clean program is selected the water level cannot be manually overridden.
- During operation of the wash, or rinse program, you can adjust the water level by pressing the Water Level button.
- The water level may vary due to the different moisture level of the laundry items.

# Operation & Wash Cycles

## F “Water Temp” button

- Press the “Water Temp” button to select your wash temperature.
- During wool cycle, the “Hot” “Warm” “Max” water temperature cannot be chosen.

## G “Start /Pause” button

- After the power is switched on press the “Start/Pause” button to start the machine.
- During operation, push the Start/Pause button to pause the machine.
- Push the Start/Pause button again to restart the machine.

## H “POWER” button

- To turn on/off the power, press the power button.
- If the start pause button is not pushed within minutes, the washing machine will automatically switch off the power.

## Button Operation and Descriptions

1 Press the “” button to switch power on/off

Power

2 Turn the “Cycle” knob to select automatic program

When the power is switched on “Cotton” cycle is automatically set .  
Turn the “cycle” knob to select automatic program.

# Operation & Wash Cycles

## 3 Press the “ ” buttons to customise the pre-set options

- During Rinse cycle, only SPIN times can be set, all other wash functions are locked.
- During Drum Clean cycles, these settings cannot be changed and buttons will not function, as machine will only follow pre-programmed settings.

## 4 Press the “” button to change the water level

- For the “Cotton” and “Eco” cycles the machine will run a Fuzzy Logic program that automatically detects the type of laundry in the tub. After detection it will set the water level automatically.
- The water level can only be changed once the machine has started by pushing the “Start/Pause” button, then push the “Water Level” button to reset the water level. Press the “Start/Pause” button to resume the wash cycle.

## 5 Press the “” button to select the the wash and rinse temperature

Set the wash temperatures in accordance to the requirements of each load.

## 6 Press the “” button to select the delay wash program

The delay time program is automatically off, and wash cycles will start as soon as “Start/Pause” button is pushed.

### Confirm the operation of “Delay” program

- To set a delay time, first select the Cycle and options required and push the “Delay” button.
- The cycle indicator lights will go off and the “Delay”(Hours) indicator light will be on.
- During the delay program, press the “Delay” button to display the time remaining. The delay time indicator shows the time remaining till the wash ends.
- To cancel the delay program, switch the power off and back on, then make a new selection.
- Delay start (2-24hr) option.
- Delay time is to the end of washing cycle.



The wash will finish  
in about 18 hours

# Operation & Wash Cycles

## 7 Press the “ ” button to start the cycle

Start / Pause

- If the top lid is opened while machine is used, the machine will stop and an audible alarm will sound, close the lid and press the “start/pause”,the machine will run

### Child Lock

- The function is intended for children safety and preventing the washing program from accidental changes by children.
- Set the desired washing program,after setting,press the “Start/Pause” button,and washing machine begin to run. Then hold the “Progress” button and Delay button at the same time for more than 3 seconds, you will hear three beep sound, digital tube display “CL”,and the child lock will activate.All of the buttons are locked, and will no function.
- Release the child lock function:  
Press the Progress button and Delay button at the same time for more than 3 seconds, after three beep sound, the child lock function is released.  
Note: If you open the lid when the child Lock activate, digital tube display “E2”, and beep ,you need close the lid and press the Start/Pause to cancel,or washing machine will drain after 10 seconds,and power off after 10 minutes.

## Cycle completed

When the machine has completed the selected/current wash cycle,an audible alarm will sound and the machine will switch off automatically.

This washer has a 2-step water fill to achieve the required water level and temperature for the best cleaning result.

**First Fill** - Once options and cycle are selected and the Start/Pause button is pressed, both hot and cold water will flow into the inner tub. The warm water helps to dissolve detergent quickly. The washing operation starts at the end of the hot water fill and is followed by a 5-minute (approximately) soak-agitation session to help the detergent mix completely with the laundry.

**Second Fill** - The second fill is in order to reach the selected water level and make the clothes completely soaked in water to achieve a better wash effect.

## Note:

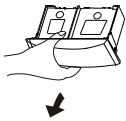
- The energy test program was performed using the "Cotton" cycle default setting of:  
Soak: "30"Min; Water Temp: Warm; Rinse:1 Rinse; Spin:7 Min  
Water level:Max.
- If you choose the Cotton program, it is not suggested to put the softener, because the softener can not be put in the inner tub
- Please use low suds/high efficiency detergent.

# Maintenance

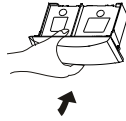
- Remove the power plug before carrying out any cleaning or maintenance.
- Clean the lint filter(s) and detergent box after each wash.

Clean the detergent box and set it on the control panel seat.

- 1.The method of dismantle: Push it up aslant and gently.
- 2.The method of clean: Use a brush and duster cloth to clean it, then flush it with water.
- 3.The method of install : Install it upwards and aslant and push it in.



Remove



Install

- The lint filter must be used during washing.
- It must be cleaned in time after each using.

Lint filter:

- 1.Push down the spring piece of the top lint filter to make the claws out of the filter cover, and then pull out the lint filter to get it down.( figure 1)
- 2.Pull the back of the lint filter, and then you can get down it off the front cover of the lint filter.(figure 2)
- 3.Sweep the lint in the lint filter.
- 4.Put the back of the lint filter into the front cover .
- 5.Put the lint filter into filter cover, and make it tight.
- 6.Make sure the lint filter well installed, or it can influence your use.

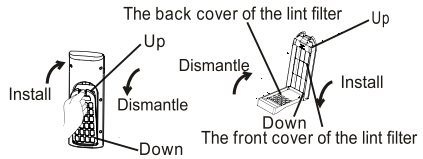
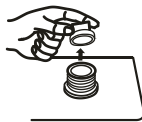
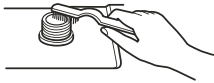


Figure 1

Figure 2

The filter at the water inlet valve may become blocked by impurities in the water supply. Clean it with a plastic bristled brush every two months.



If the cabinet is dirty, wipe it with a damp cloth.

- Do not wash directly with water.
- Wipe with a neutral detergent (please check directions on detergent bottle first).
- Do not wipe machine with thinners, petrol, alcohol or other harsh solvents.



1. After washing cycle has finished, turn off the water tap. (If needed, you can remove the water inlet hose).
2. Do not store water in the washing machine for a long period without completing a wash cycle. Drain the water completely after each wash.
3. Hang up the power cord and drain hose.
4. Wipe up any drops of water on the surface of the machine and inside the tub. Leave the lid open for about 1 hour after each wash to evaporate any residual water.

# Trouble-shooting

If there is a fault or the machine does not operate correctly, remove the power plug before checking the machine. Using diagnostic list below, please check if the machine requires a repair. If a repair is required, please contact our Customer Care Team, do not try to fix it by yourself.

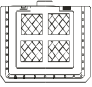
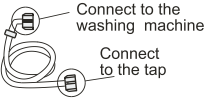


Problem		Possible causes	What to do
The machine does not drain or drain slowly. The display shows E1.		<ul style="list-style-type: none"> <li>• Is the drain hose blocked?</li> </ul>	<ul style="list-style-type: none"> <li>• Remove the blockage. Push the Start/Pause button once.</li> </ul>
The machine stops running. The display shows E2.		<ul style="list-style-type: none"> <li>• The top lid is not closed.</li> </ul>	<ul style="list-style-type: none"> <li>• Close the top lid. Push the Start/Pause button once.</li> </ul>
The machine does not spin. The display shows E3.		<ul style="list-style-type: none"> <li>• Has the laundry been placed unevenly in the machine?</li> <li>• Is the machine level?</li> </ul>	<ul style="list-style-type: none"> <li>• Redistribute the load evenly. Push the Start/Pause button once.</li> <li>• Level the machine.</li> </ul>
The display shows E4.		<ul style="list-style-type: none"> <li>• Is the water tap closed or has the water supply been interrupted?</li> <li>• Is the water inlet valve blocked?</li> <li>• Is the water pressure too low?</li> <li>• Is the drain hose set too low?</li> </ul>	<ul style="list-style-type: none"> <li>• Open the water tap. Push the Start/Pause button once.</li> <li>• Clean the water inlet valve then push the Start/Pause button once.</li> <li>• Use after the water pressure is normal.</li> <li>• The height of the end of the drain hose should be between 800mm-1200mm.</li> </ul>
The display shows FC.		<ul style="list-style-type: none"> <li>• Communication failure between display board and motor driver.</li> </ul>	<ul style="list-style-type: none"> <li>• Please contact Customer Care.</li> </ul>
The display shows FA.		<ul style="list-style-type: none"> <li>• The water level sensor has failed.</li> </ul>	<ul style="list-style-type: none"> <li>• Please contact Customer Care.</li> </ul>
The machine does not work.	Will not wash	<ul style="list-style-type: none"> <li>• Is there a power failure?</li> <li>• Is the power plug inserted tightly?</li> <li>• Has the water level reached preset position?</li> </ul>	<ul style="list-style-type: none"> <li>• Wait for the power supply to be restored.</li> <li>• Insert the power plug tightly.</li> <li>• Wait for the water to fill to the preset level.</li> </ul>
	Will not spin	<ul style="list-style-type: none"> <li>• Is the power plug inserted tightly?</li> <li>• Is the top lid closed?</li> <li>• Is the laundry distributed unevenly in the machine?</li> </ul>	<ul style="list-style-type: none"> <li>• Insert the power plug tightly.</li> <li>• Close the top lid.</li> <li>• Redistribute the laundry.</li> </ul>
There are abnormal sounds inside the machine.		<ul style="list-style-type: none"> <li>• Is the machine level?</li> <li>• Has the laundry been placed unevenly in the machine?</li> <li>• Are there any foreign objects inside the bowl?</li> </ul>	<ul style="list-style-type: none"> <li>• Level the machine.</li> <li>• Redistribute the load evenly. Close the top lid.</li> <li>• Remove the foreign object.</li> </ul>
The water tap leaks.		<ul style="list-style-type: none"> <li>• Is the water inlet hose loose?</li> </ul>	<ul style="list-style-type: none"> <li>• Fasten the inlet hose.</li> </ul>
The display shows E9.		<ul style="list-style-type: none"> <li>• Communication failure between show board and power board.</li> </ul>	<ul style="list-style-type: none"> <li>• Please contact Customer Care.</li> </ul>
The display shows E8.		<ul style="list-style-type: none"> <li>• Is the door lock broken?</li> </ul>	<ul style="list-style-type: none"> <li>• Please contact Customer Care.</li> </ul>
The display shows F2.		<ul style="list-style-type: none"> <li>• Over flow Error</li> </ul>	<ul style="list-style-type: none"> <li>• Please contact Customer Care.</li> </ul>



## Common occurrences

Situation	Cause
<ul style="list-style-type: none"><li>• The spinning is intermittent after it starts.</li></ul>	<ul style="list-style-type: none"><li>• Redistribute the load evenly. Close the top lid.</li></ul>
<ul style="list-style-type: none"><li>• Select spin program, but it does not work.</li></ul>	<ul style="list-style-type: none"><li>• The program is setting the drain time, there will be a pause before the spin program starts.</li></ul>
<ul style="list-style-type: none"><li>• There maybe water in the drain hose when first used.</li></ul>	<ul style="list-style-type: none"><li>• It maybe residual water after performance inspection by the factory.</li></ul>

# Packing list

Name	Quantity	Storage Location
<ul style="list-style-type: none"> <li>● Automatic washing machine</li> </ul>	<ul style="list-style-type: none"> <li>● One</li> </ul>	
<ul style="list-style-type: none"> <li>● User manual</li> </ul>	<ul style="list-style-type: none"> <li>● One</li> </ul>	<ul style="list-style-type: none"> <li>● Inside the document bag</li> </ul>
<ul style="list-style-type: none"> <li>● Warranty card</li> </ul>	<ul style="list-style-type: none"> <li>● One</li> </ul>	<ul style="list-style-type: none"> <li>● Inside the document bag</li> </ul>
<ul style="list-style-type: none"> <li>● Bottom plate</li> </ul> 	<ul style="list-style-type: none"> <li>● One</li> </ul>	<ul style="list-style-type: none"> <li>● Placed in the upper foam piece inside the washing machine packaging</li> </ul>
<ul style="list-style-type: none"> <li>● Components of the water inlet hose</li> </ul> 	<ul style="list-style-type: none"> <li>● Two</li> </ul>	<ul style="list-style-type: none"> <li>● Inside Accessory bag</li> </ul>
<ul style="list-style-type: none"> <li>● Drain hose</li> </ul> 	<ul style="list-style-type: none"> <li>● One</li> </ul>	<ul style="list-style-type: none"> <li>● Inside Accessory bag</li> </ul>
<ul style="list-style-type: none"> <li>● Drain hose Clamp</li> </ul> 	<ul style="list-style-type: none"> <li>● One</li> </ul>	<ul style="list-style-type: none"> <li>● Inside Accessory bag</li> </ul>
<ul style="list-style-type: none"> <li>● Bracket</li> </ul>	<ul style="list-style-type: none"> <li>● One</li> </ul>	<ul style="list-style-type: none"> <li>● On The Drain hose</li> </ul>
<ul style="list-style-type: none"> <li>● Screw</li> </ul>	<ul style="list-style-type: none"> <li>● One</li> </ul>	<ul style="list-style-type: none"> <li>● Inside Accessory bag</li> </ul>

# Specifications

Type	Fully Automatic Washing Machine
Model	HWT80MW2
Rated voltage/frequency	220-240V~ · 50Hz
Rated washing power	470W
Rated spinning power	300W
Net weight	42kg
Gross weight	47kg
Dimensions (mm)	W 580 D 590 H 1010
Water inlet pressure	0.03MPa-1.0MPa
Rated Washing capacity	8.0kg

Type	Fully Automatic Washing Machine
Model	HWT90MW2
Rated voltage/frequency	220-240V~ · 50Hz
Rated washing power	470W
Rated spinning power	300W
Net weight	44kg
Gross weight	50kg
Dimensions (mm)	W 580 D 590 H 1010
Water inlet pressure	0.03MPa-1.0MPa
Rated Washing capacity	9.0kg