



# Samsung Portable SSD T7 Touch

## User Manual

MU-PC500

MU-PC1T0

MU-PC2T0



# DISCLAIMER

SAMSUNG ELECTRONICS RESERVES THE RIGHT TO CHANGE PRODUCTS, INFORMATION AND SPECIFICATIONS AT ANY TIME WITHOUT NOTICE.

Information in this document is provided in connection with products of Samsung Electronics Co. Ltd. (“Samsung”). Product descriptions and specifications contained in this document are for reference purposes only. All information discussed in this document may change at any time, without notice, and is provided on an “AS IS” basis, without warranties of any kind. This document and all information discussed in this document remain the sole and exclusive property of Samsung. No license of any patent, copyright, mask work, trademark or any other intellectual property right is granted by this document, express or implied, by estoppels or otherwise. Except as provided in Samsung’s terms and conditions of sale for such products, Samsung disclaims any express or implied warranty, relating to sale and/or use of Samsung products, including liability or warranties relating to fitness for a particular purpose, merchantability, or infringement of any patent, copyright or other intellectual property right. Samsung products are not intended for use in life support, critical care, medical, safety equipment, or similar applications where product failure could result in loss of life or personal or physical harm, or any military or defense application, or any governmental procurement to which special terms or provisions may apply. For updates or additional information about Samsung products, contact your local Samsung store or visit Samsung website (<https://www.samsung.com>). Samsung and Samsung logos are registered trademarks of Samsung Electronics Co., Ltd. or its affiliates in the United States and other countries. Other names and brands may be claimed as the property of others.

Copyright © 2020, Samsung Electronics Co., Ltd. All rights reserved.

# Samsung Portable SSD T7 Touch

## User Manual

### Table of Contents

<b>Introduction .....</b>	<b>4</b>
<b>Getting Started .....</b>	<b>5</b>
What's In the Box .....	5
How to Connect / Disconnect.....	5
System Requirements.....	6
Capacity of T7 Touch Displayed on the System .....	6
<b>Using T7 Touch.....</b>	<b>7</b>
Connecting T7 Touch .....	7
Disconnecting T7 Touch.....	7
Motion LED behavior by product status.....	7
Installing Samsung Portable SSD Software 1.0.....	7
<b>Caution.....</b>	<b>22</b>
Back Up Important Data .....	22
Safeguard User Password .....	22
Connect to Certified Devices; Compliance with Safety Standards .....	22
Avoid Shock, Vibration .....	22
Do Not Disassemble, Damage, or Remove Label .....	22
Use Genuine Accessories .....	23
Use in Appropriate Temperature and Humidity .....	23
Use No Excessive Force in Unplugging the Cable .....	23
Perform Virus Scans and Updates .....	23
Clean the Product.....	23
Keep Away from Children, Infants and Animals .....	23
<b>FAQ .....</b>	<b>24</b>
<b>Product Specifications and Certifications.....</b>	<b>25</b>
Product Specifications.....	25
Regulatory Compliance .....	25
KC (Korea Certification) .....	25
FCC (Federal Communication Commission) .....	26
CE (Conformity European).....	26
WEEE (Waste Electrical and Electronic Equipment) .....	27



# Introduction

Samsung T7 Touch is a superfast external storage device that has convenient data protection with fingerprint recognition and a refined design with motion LED.

## Transfer in a flash

Transfer massive files within seconds with the incredible speed of USB 3.2 Gen2 on the T7 Touch. The embedded PCIe NVMe technology facilitates sequential read/write speeds of up to 1,050/1,000 MB/s, respectively.

## Built strong and safe

SSD stands for Solid State Drive, which means it's built with no moving parts. A sturdy metal body encases the immobile hardware, keeping your data intact from falls of up to 2 meters. And the T7 Touch is confidently backed by a 3-year limited warranty.

\* The internal free fall shock test was conducted under controlled conditions.

## Secure with a touch

Keep your private files secure without sacrificing convenience. The built-in security options on the T7 Touch utilize the AES 256-bit encryption and give you the option of unlocking with a touch of your finger or with a password.

## Enlightening motion LED

T7 Touch features an LED square that illuminates to keep you informed of what your SSD is doing at a glance. Choose from classic black or stylish silver, in three capacities to suit your needs: 500GB, 1TB, or 2TB.

## Sleek and compact style

Pocket-sized and slim, the lightweight body comes standard on the T7 Touch. Roughly the size of a credit card and weighing in at 58 grams, the solid aluminum uni-body construction fits comfortably in the palm of your hand.

## Management software

The T7 Touch comes embedded with upgraded software for PCs and Macs to help you set up a password and fingerprints and get the latest firmware updates. You can also download the mobile app for Android smartphones and tablets.

## Multi-device compatibility

Access your files anytime, anywhere. The T7 Touch is compatible with PC, Mac, Android devices, gaming consoles, and more. Included in the box are USB Type C-to-C and Type C-to-A cables for added convenience.

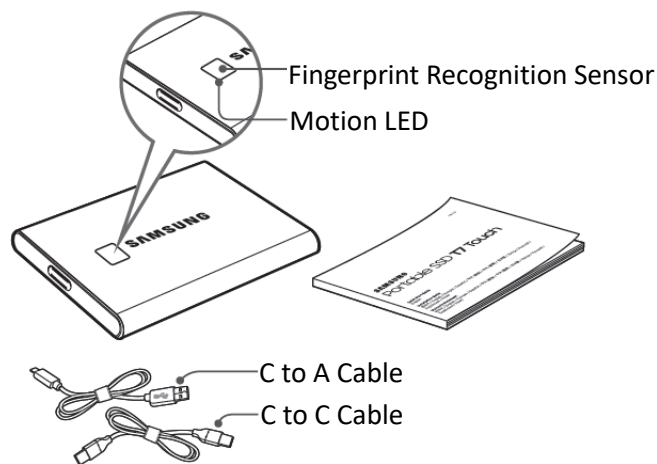
\* Compatibility with host devices may vary. Please find the compatible devices list on [www.samsung.com/support](http://www.samsung.com/support).

# Getting Started

Before using the Samsung Portable SSD T7 Touch (referred to as “T7 Touch”), please read this User Manual thoroughly so that you may know how to use the product in a safe and appropriate manner.

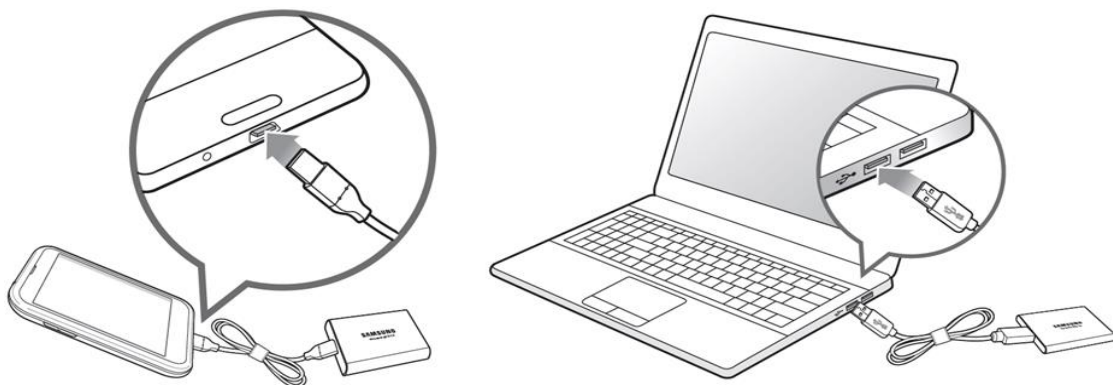
## What’s In the Box

- Samsung Portable SSD T7 Touch
- USB 3.2 Gen 2 USB C to A cable
- USB 3.2 Gen 2 USB C to C cable
- Quick Start Guide & Warranty Statement



## How to Connect / Disconnect

- ① Select the cable compatible with your device. Connect one end of the cable to the device and the other end to the T7 Touch.
- ② Always use “Eject”, “Unmount” or “Safely Remove Hardware” when disconnecting the T7 Touch to protect your data.



## System Requirements

### 1. USB 3.2 Gen 2 (10 Gbps) Interface Support

USB (Universal Serial Bus) is a serial input/output interface standard for connecting various devices. T7 Touch's data transfer speed is optimal with USB 3.2 Gen 2 (10 Gbps) and using lower versions such as USB 3.2 Gen 1 (5Gbps), USB 2.0 and 1.1 may result in lower performances due to interface limitations inherent in such lower versions.

\* Performance may vary depending on user's system to which T7 Touch is connected. Even when using USB 3.2 Gen 2 connections, T7 Touch may not perform well if your system does not support UASP (USB Attached SCSI Protocol). Please make sure that your system supports UASP.

### 2. Operating System Requirements

- Windows OS: Windows 7 or higher
- Mac OS: Mac OS X 10.10 or higher
- Android: Android Lollipop or higher

### 3. File Formats

T7 Touch is pre-formatted in using exFAT file system which is supported by Windows OS, Mac OS, and Android operating systems. Whether data formatted to a certain format may be read or written to your computer vary depending on the OS, as specified in the table below. If you use T7 Touch on a single OS, it is recommended that you format the T7 Touch using the appropriate file format for that OS. (e.g.) Read/write restrictions for file systems by each operating system.

File Formats	Windows OS	Mac OS
exFAT	Both read and write	Both read and write
NTFS	Both read and write	Read only
HFS	Not recognizable	Both read and write

\* When using exFAT across multiple operating systems, data writing may become locked and you may only be able to read data. If such problem occurs, you can restore write access by following the instructions below.

- Mac OS: Connect T7 Touch to your Mac again, and perform Eject.
- Windows OS: When the notice pops up saying that write access is disabled, click "Scan and fix" to perform Check Disk (CHKDSK). If you did shut down the notice without performing Check Disk, you may do it by selecting the drive → Right-click → Properties → Tools → click Check.

## Capacity of T7 Touch Displayed on the System

The capacity reported by the system to which T7 Touch is connected may differ from the labeled capacity, due to the difference between the decimal and binary systems of measurement and other factors including the drive's partitioning and blocking.

\* e.g.: Windows OS: 1 GB = 1,024MB, Mac OS: 1GB = 1,000MB

Labeled capacity uses decimal system and is convertible as below:

1 GB=1,000,000,000 bytes, 1 TB=1,000,000,000,000 bytes

Lower capacity may be demonstrated by your computer due to use of a different measurement standard.

# Using T7 Touch

## Connecting T7 Touch

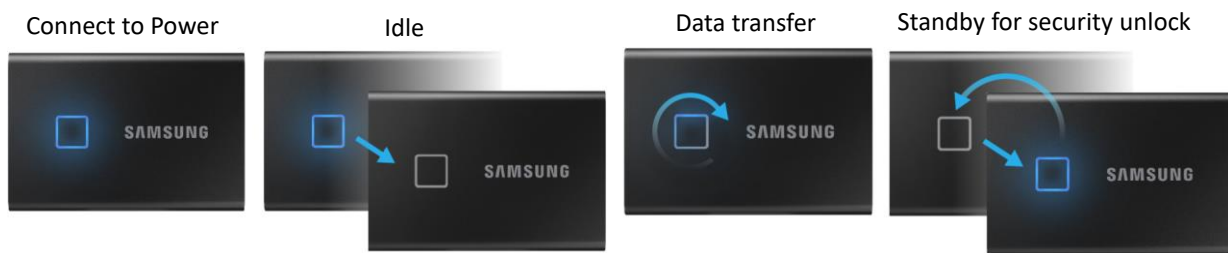
Select the cable compatible with your device. Connect one end of the cable to the device and the other end to the T7 Touch.

## Disconnecting T7 Touch

Be sure to use Safely Remove Hardware feature for every disconnection of T7 Touch. Unplugging from computer without performing Safely Remove Hardware feature may cause data losses or damages to the T7 Touch.

\* Samsung shall not be liable for loss of user data or product damages caused by user's failure to comply with this instruction.

## Motion LED behavior by product status



## Installing Samsung Portable SSD Software 1.0

(For Security Mode and Firmware update)

### For PCs and Macs

In the Explorer (Windows OS) or Desktop (Mac OS), select the "Samsung Portable SSD" application.

Windows OS: SamsungPortableSSD\_Setup\_Win\_1.0.exe

Mac OS: SamsungPortableSSD\_Setup\_Mac\_1.0.pkg

\* If you format partition of the T7 Touch after purchase, Samsung Portable SSD Software stored in the drive will be deleted. In such case, please download the "Samsung Portable SSD Software 1.0" application from Samsung website (<http://www.samsung.com/samsungssd>).

\* Samsung Portable SSD Software 1.0 is only for T7 Touch, so installation of Samsung Portable SSD Software 1.0 will not automatically remove Samsung Portable SSD Software (previous version), if remaining in your computer, which was designed for T3, T5, X5.

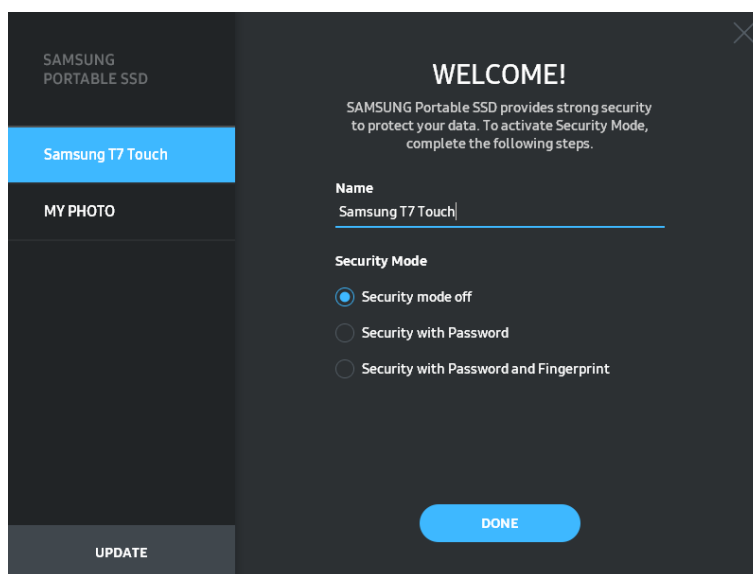
## 1. Running Samsung Portable SSD Software 1.0

Select “Samsung Portable SSD Software 1.0” application icon on Desktop.

\* In case of Mac OS, Samsung Portable SSD Software 1.0 may not operate without device (driver) enabled.

## 2. Setting Security Mode (Optional)

Security mode is optional. You may use T7 Touch without security/update feature enabled. Please follow the instructions that appear on each screen of the Samsung Portable SSD Software 1.0. Once you agree to the terms and conditions of the Samsung Portable SSD Software 1.0 while it is being installed, you can set a password through the following steps. (Certain elements of Samsung Portable SSD Software 1.0 will be installed on the user’s computer for security mode.)



- **Security mode off**

You may use T7 Touch without security mode.

- **Security with Password**

You may enable security mode with password. use T7 Touch without security mode. If the password is forgotten, you need to have T7 Touch to be restored to factory setting through online service rendered by our customer service centers. Please keep it in mind that all user data placed in T7 Touch will be lost by factory reset. Please be cautious not to forget your password.

- **Security with Password and Fingerprint**

You may enable security mode with password and fingerprint. After you set up password, you can use fingerprint security. If the password is forgotten, you need to unlock T7 Touch with fingerprint, move all the stored data to safe place and need to have T7 Touch to be restored to factory setting through online service rendered by our customer service centers. You can enroll up to four fingerprints and If the password is forgotten, you can not change or delete registered fingerprints.

\* Samsung shall not be liable for loss of user data caused by forgotten or stolen passwords. In an effort to keep the device as secure as possible, there is no password recovery option. If the password is forgotten, users need to have T7 Touch to be restored to factory setting through online service rendered by our customer service centers. Please keep it in mind that all user data placed in T7 Touch will be lost by factory reset. Please be cautious not to forget your password or use security mode with fingerprint.

\* **Only Mac OS**, “Samsung Portable SSD” driver is required for the security functionality. If the kernel extension is not installed, complete the installation by following the sequence on the package installation. Once installed, disconnect and reconnect X5 to confirm that the installation was successful.

\* **Only Mac OS**, “Samsung Portable SSD” driver and some of 3rd party drivers, including SATSMARTDriver are mutually exclusive. If you wish to work with SATSMARTDriver, please remove Samsung Portable SSD driver and install SATSMARTDriver as following instruction.

\* When both Samsung Portable SSD Driver and SATSMARTDriver are installed and conflict is detected, the instructions like the following will be available:

**How to remove Samsung Portable SSD Driver and install SATSMARTDriver**

```
#sudo kextunload /Library/Extensions/SamsungPortableSSDDriver.kext
```

```
#sudo kextload /Library/Extensions/SATSMARTDriver.kext
```

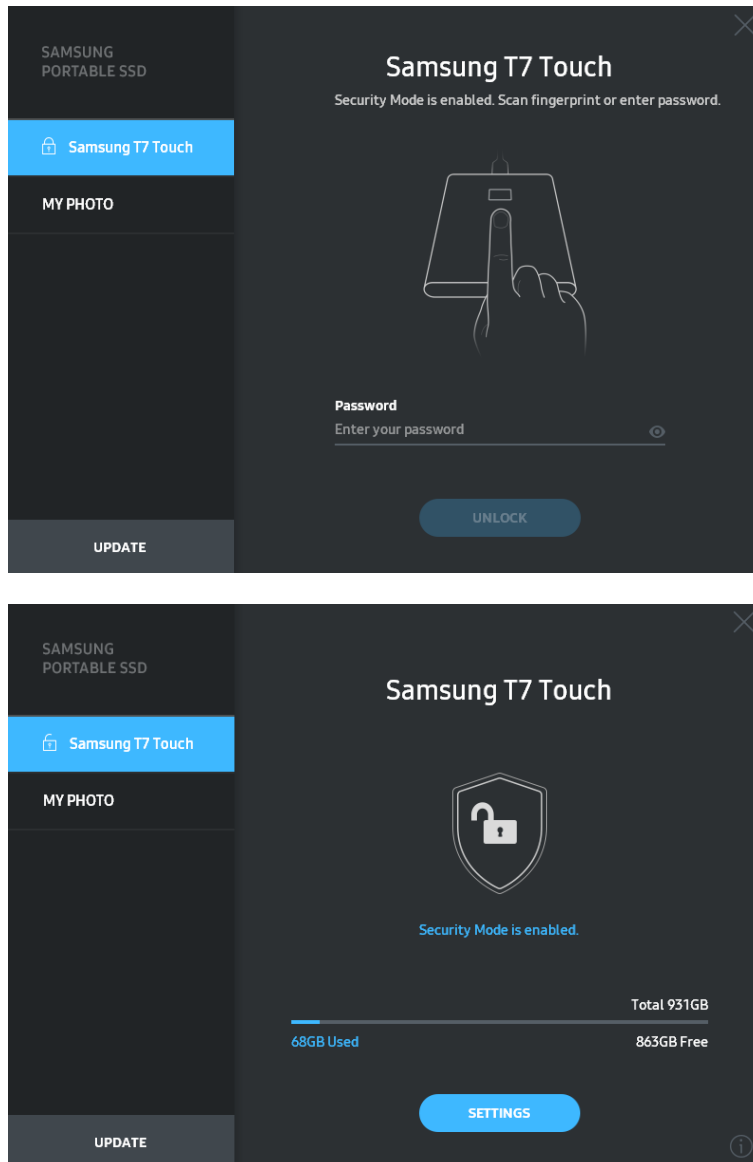
**How to remove SATSMARTDriver and install SamsungPortableSSDDriver**

```
#sudo kextunload /System/Library/Extensions/SATSMARTDriver.kext
```

```
#sudo kextload /Library/Extensions/SamsungPortableSSDDriver.kext
```

### 3. Unlock

If you've enabled security mode, every time you connect T7 Touch to your computer you need to tap your fingerprint or enter your password and click the "UNLOCK" button before getting access to the data in T7 Touch. If you fail to unlock, your access will be confined to capacity of about 128MB allocated to SamsungPortableSSD\_1.0.exe and SamsungPortableSSD\_1.0.app, which means that you will be locked out of the data protected.



\* Depending on the user environment, the "SamsungPortableSSD Software 1.0" may not be executed automatically. In such case, please double-click the "SamsungPortableSSD Software 1.0" icon in Explorer on Windows or the Desktop on Mac.

\* Security mode may be supported by certain version of each OS (or higher) only. Please check whether your OS meets the system requirements and supports security mode.

\* If security mode is enabled, only the capacity of security partition in the T7 Touch will be initially displayed. This security partition is approximately ~128 MB. Once you tap your fingerprint or enter your password and unlock successfully, the full capacity of T7 Touch will be displayed in your system.



\* You may choose another Samsung Portable SSD by clicking T7 Touch's name on left panel. Samsung Portable SSD Software lists the entire host devices (up to 6) to which Samsung Portable SSD is connected.

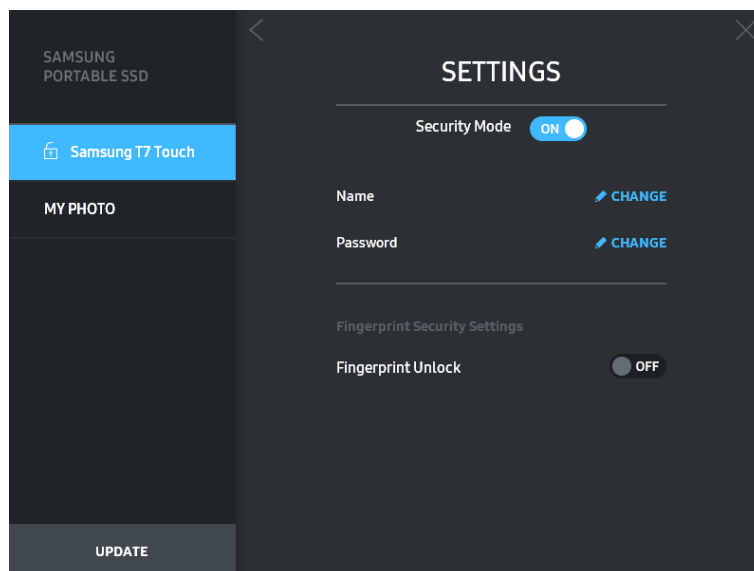
#### 4. Change in Settings

You can change your security mode/user name/password/fingerprint security settings of the T7 Touch by clicking “SETTINGS” button on the main page. When using a computer without the security software, you can download installation file (“SamsungPortableSSD\_Setup\_Win\_1.0.exe” for Windows OS, “SamsungPortableSSD\_Setup\_Mac\_1.0.pkg” for Mac OS) from the Samsung website (<https://www.samsung.com/samsungssd>) and install it to change the settings.

- **Security Mode**

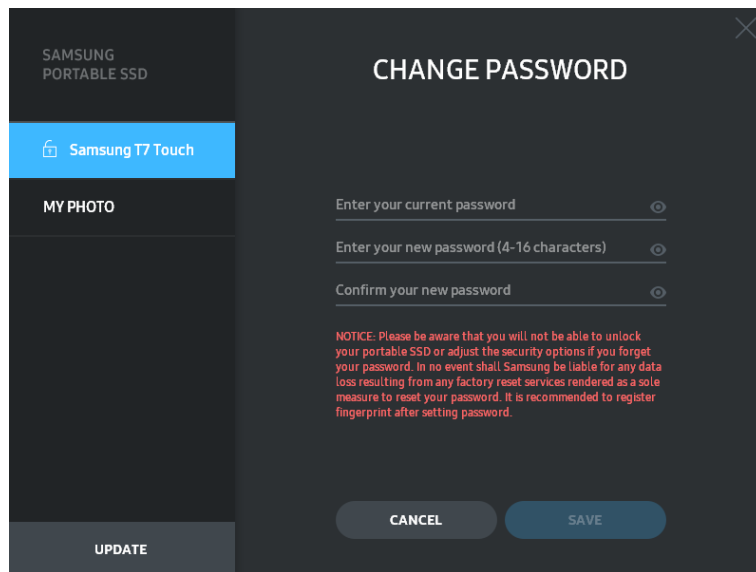
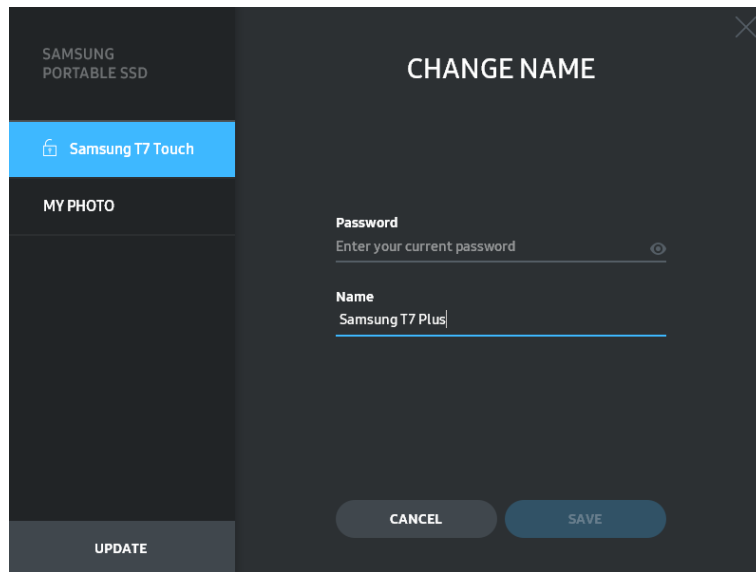
For making a change in security mode between ON and OFF, please click toggle button and enter correct password. Refer to the table below for a description of T7 Touch security status indicator.

Status		Description
	Locked	This signifies that security mode is on, but user has not unlocked T7 Touch. You can unlock T7 Touch on unlock page.
	Unlocked	This signifies that security mode is on and user has already unlocked T7 Touch. You can see the storage capacity on main page and change settings.
No icon	Security mode OFF	This is when security is OFF. You can see the storage capacity on main page and change settings.




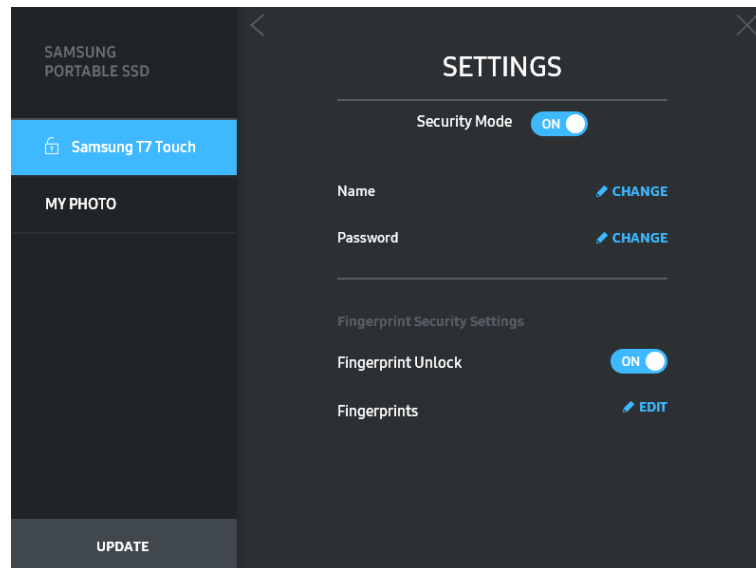
- **Name/Password**


You can change Name and Password. For changing password, please click “CHANGE” button.

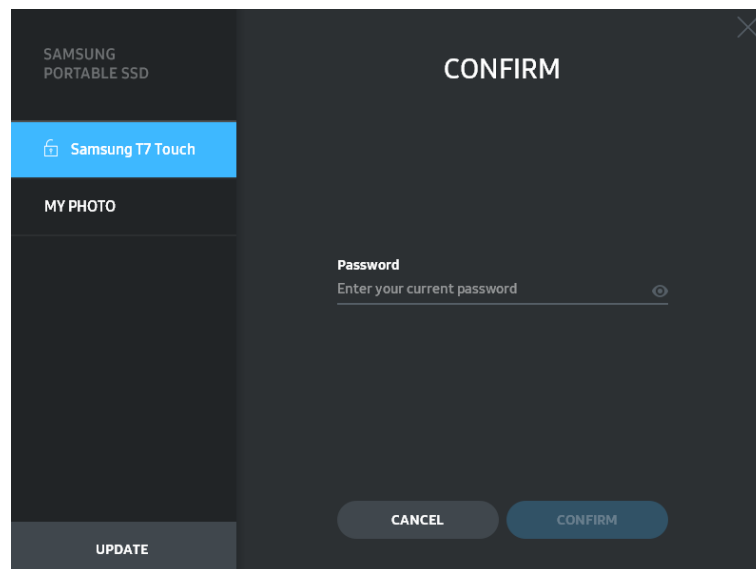


- **Fingerprint security settings**

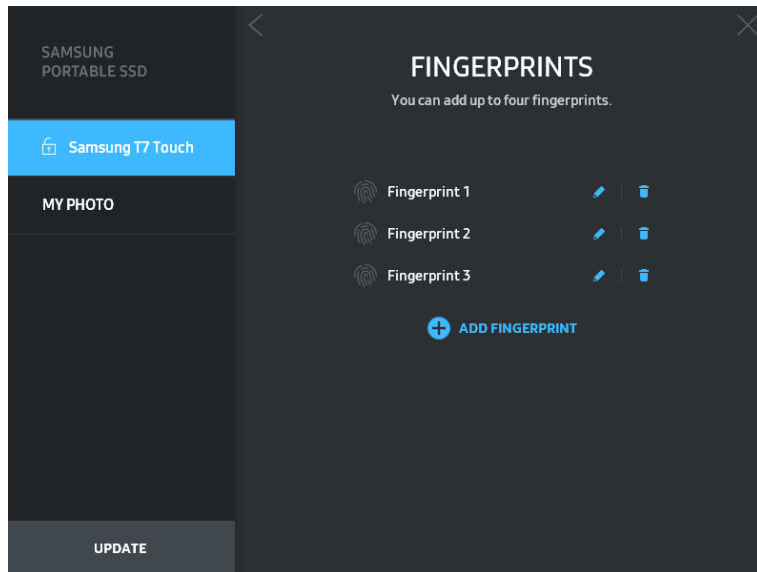
If you've enabled fingerprint security mode, you can manage fingerprint settings by clicking "EDIT" button (  ).



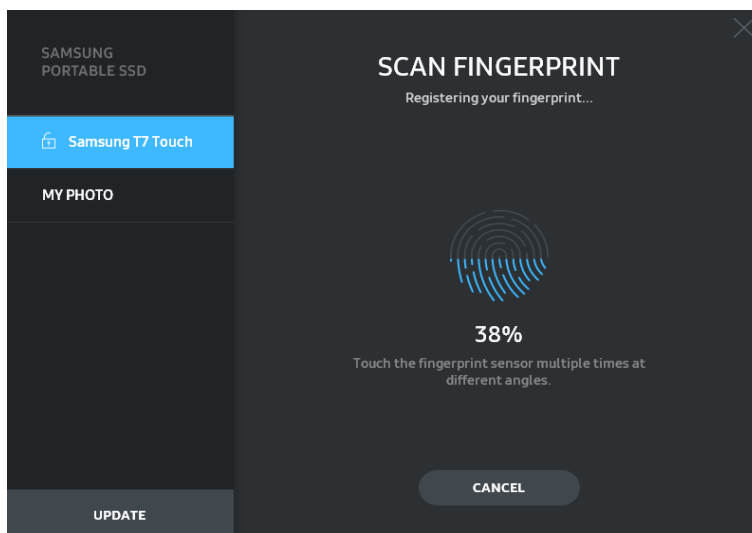
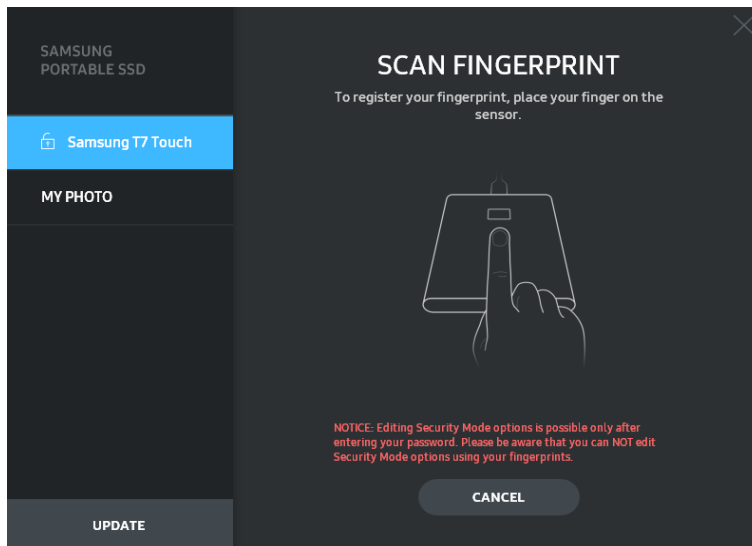
Enter the current password and click "CONFIRM" button (  ) to move to the fingerprint management step.

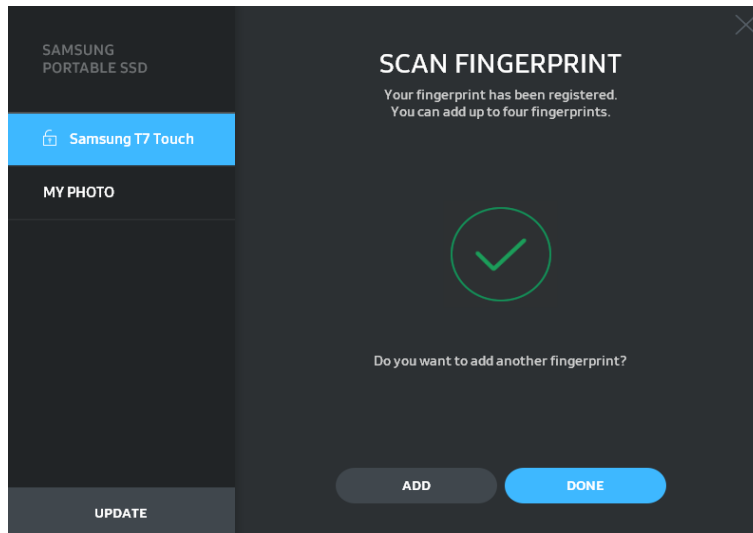


By clicking "ADD FINGERPRINT" button (  ), you can add fingerprints.

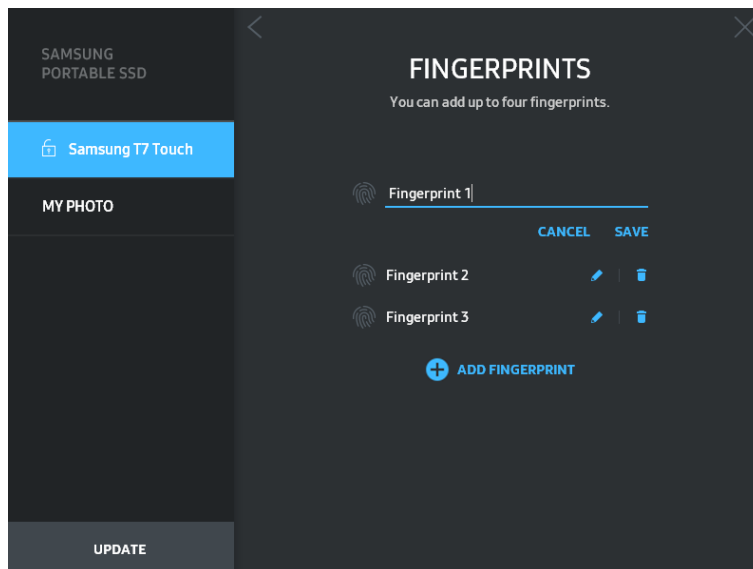


Place your finger on the sensor.



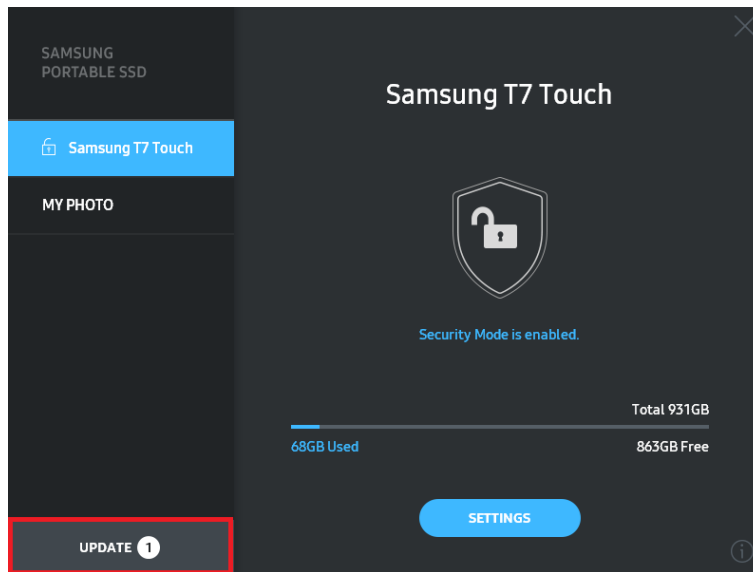


When registering a fingerprint, the first Fingerprint 1 to 4 is created. You can rename (✎) or delete (🗑️) the registered fingerprint.

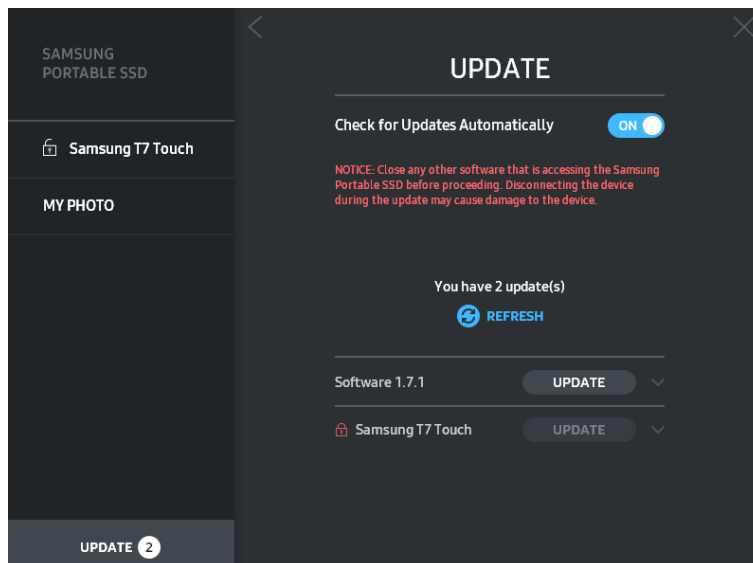



## 5. Update Software and Product firmware


If your computer is connected to the internet, the number of Software/Firmware updates available will show on the bottom of left panel.




By clicking “UPDATE” button (  ), you may go to update page.



By clicking “UPDATE” button (  ), you can download the latest software (“SW”) or firmware (“FW”) and update it.

By clicking “Check for Update Automatically” toggle button (  ), you can choose whether to have SW and FW automatically updated whenever Samsung Portable SSD is connected.

By clicking refresh button (  ), you can refresh update status.

By clicking arrow down button (  ), you can see detail information on the applicable update.

\* When user changes “Check for Update Automatically” from OFF to ON, SW does not refresh update information immediately. Update information is refreshed when either user clicks refresh button or Samsung Portable SSD is connected to the computer.

\* For FW updates, security mode needs to be OFF. Any access to T7 Touch, including copying/deleting/formatting partition, while FW is being updated, may cause abnormal behavior of or damage to the T7 Touch.

\* Once FW has been updated, please disconnect and reconnect T7 Touch to ensure that the FW update was successful.

## 6. Delete “Samsung Portable SSD Software”

Deleting software on each OS

Computer OS		Description
Windows OS	If user installed SW using SamsungPortableSSD_Setup_Win_1.0.exe	Software can be uninstalled via “Uninstall or change a program”. Go to Control panel → Programs → Programs and Features → Uninstall or change a program → Double-click “Samsung Portable SSD Software 1.0” and select “Yes”
	If user installed SW using SamsungPortableSSD_1.0.exe	Software need to be deleted manually by executing PSSD_Cleanup.bat in application installation path. (Normally C:\Program Files(x86)\Samsung\Portable_SSD\PSSD_Cleanup.bat) Please refer to FAQ in the Samsung website ( <a href="http://www.samsung.com/samsungssd">http://www.samsung.com/samsungssd</a> ) for more details.
Mac OS		Application needs to be deleted manually by executing CleanupT7PlusAll.scpt in SW installation path. (Normally #osascript ~/Library/Application Support/Portable_SSD/CleanupT7PlusAll.scpt) *Third party cleaner such as AppCleaner may not delete “Samsung Portable SSD” SW completely. Please refer FAQ in the Samsung website ( <a href="http://www.samsung.com/samsungssd">http://www.samsung.com/samsungssd</a> ) for detail information.

## 7. Select SW Default Language

Default language may be selected under Regional Setting.

## For Android devices

### 1. Download Application from Google Play Store

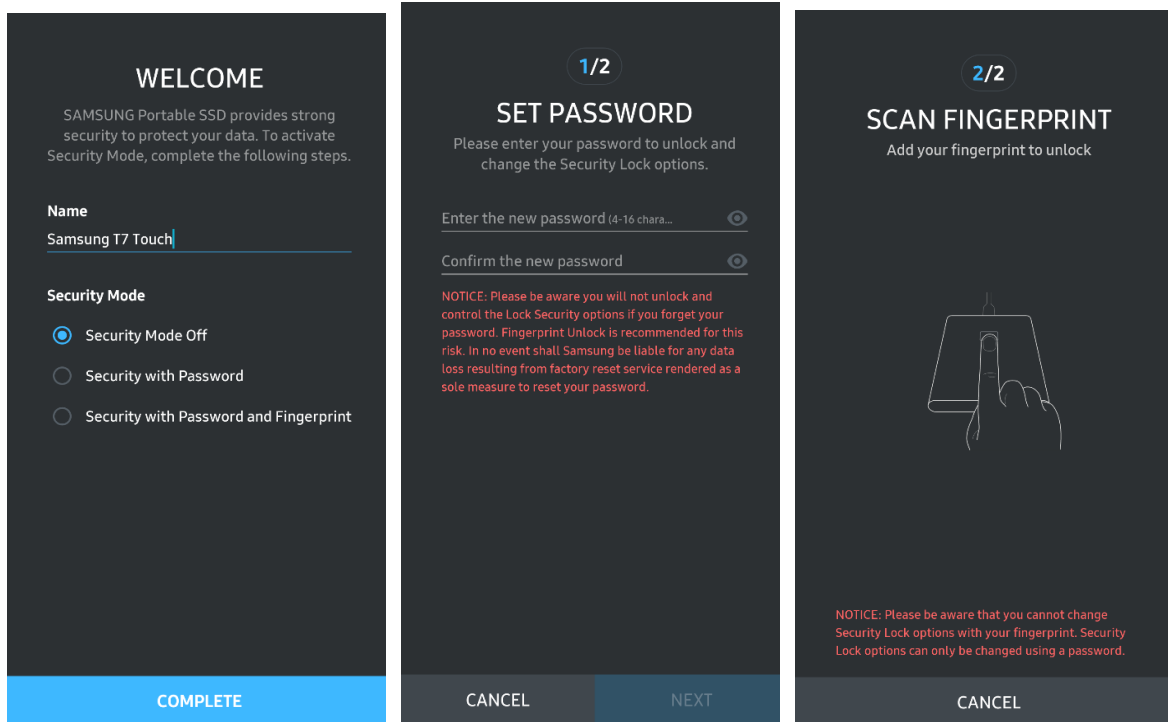
You may download “Samsung Portable SSD 1.0” application from App store.

### 2. Running the Application

Please run the Application installed.

### 3. Setting Security Mode

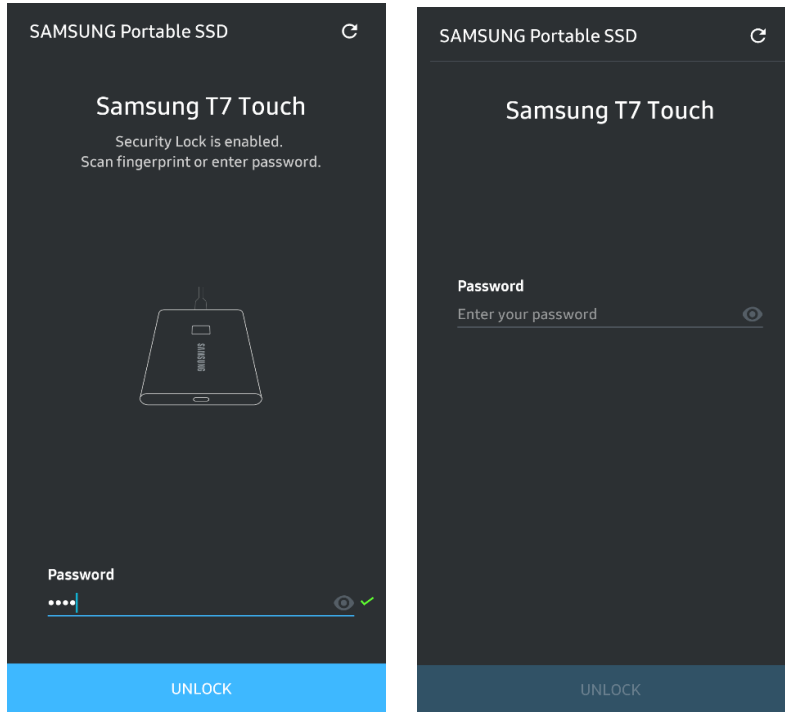
Password and fingerprint stored in T7 Touch after connection on the computer can also be used in Android.



\* Samsung shall not be liable for loss of user data caused by forgotten or stolen passwords. In an effort to keep the device as secure as possible, there is no password recovery option. If the password is forgotten, users need to have T7 Touch to be restored to factory setting through online service rendered by our customer service centers. Please keep it in mind that all user data placed in T7 Touch will be lost by factory reset. Please be cautious not to forget your password or use security mode with fingerprint.

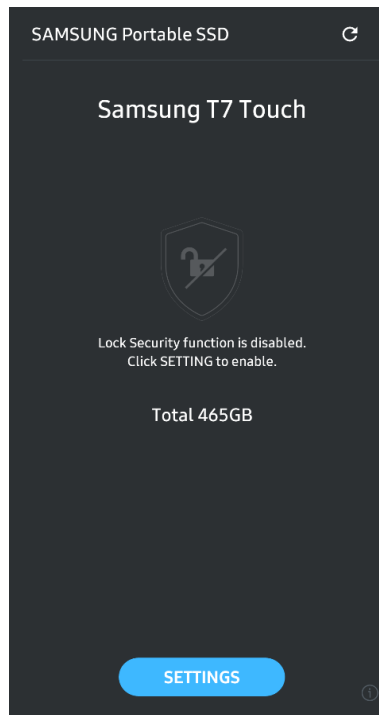
#### 4. Unlock T7 Touch

If you've enabled security mode, every time you connect T7 Touch to your device, you need to tap your fingerprint or enter your password and press the "UNLOCK" button before getting access to the data in T7 Touch.



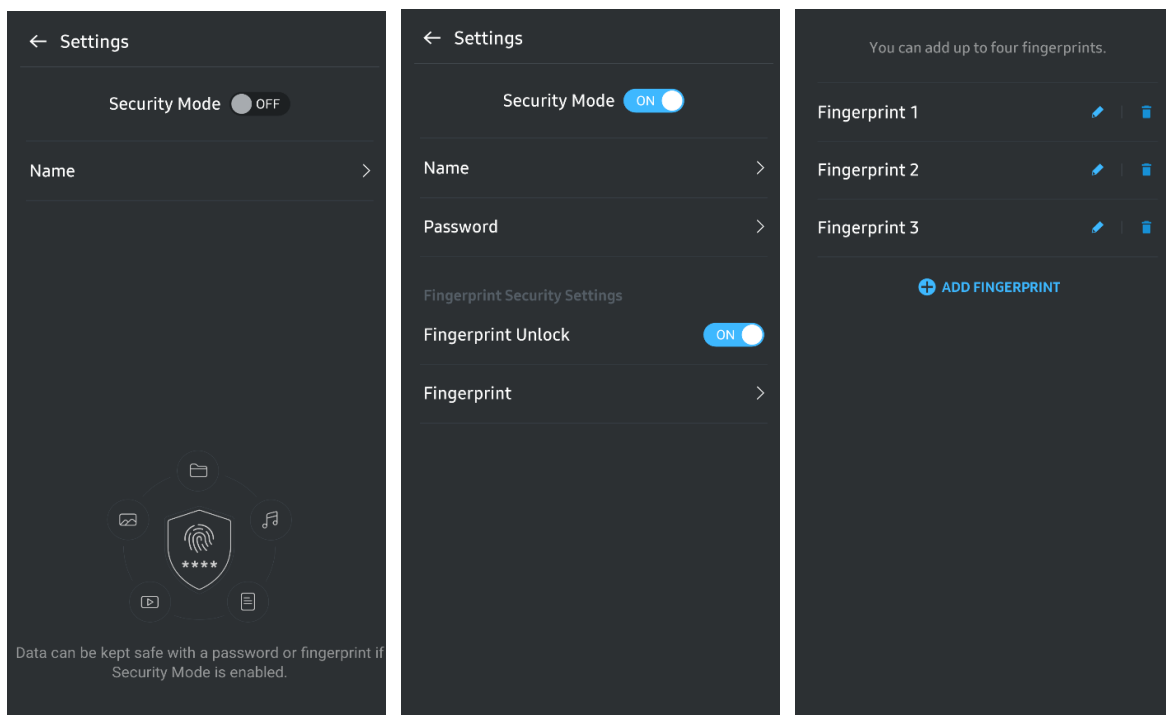
## 5. Home Screen

If security mode is not enabled in your T7 Touch, you can enter to Setting screen by clicking one of the two areas.





## 6. Settings Screen

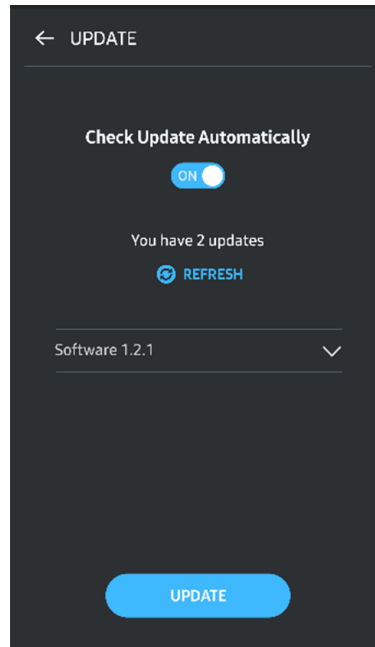
You can change the user name of T5 or password, fingerprint security settings and turn ON/OFF security mode.



## 7. Update SW and FW

To enter the update screen, click the Update page button (  ) on Home screen. If any update is available, the “UPDATE” button (  ) will be highlighted. If there is an application to be updated, your clicking UPDATE button will show the link to ‘App store’.

\* Firmware update requires connection to computer.



## 8. Deleting “Samsung Portable SSD” Application on Android

Open your android device’s Settings app and tap Apps or Application manager. Tap “Samsung Portable SSD” and uninstall.

## 9. Select Default Language

Default language may be selected under Android system language setting.

\* Path: Android apps - Settings – Language

## Caution

Failure to follow the instructions and cautions in each section of this manual may result in injury, damage to the product or data loss. Please read thoroughly before using the product.

### Back Up Important Data

No computer system can be absolutely secure. Samsung does not provide any kind of guarantee and/or warranty against data loss on the T7 Touch under any circumstances. Samsung disclaims any and all liabilities for emotional distress and/or physical and/or monetary damages or losses of any kind caused by loss and/or restoration of data stored on the T7 Touch. Be sure to back up important data at all times.

### Safeguard User Password

Because T7 Touch utilizes advanced encryption technologies, user data cannot be accessed if password is lost or forgotten. Please write down your password and store it in a safe place. If the product cannot be used due to user's failure to enter correct password, the only way to restore product is to have it reset to factory settings via an online service by a Samsung Service Center. However, restoring the device to factory settings will result in a complete loss of all user data. Please be sure to backup important data on a regular basis.

### Connect to Certified Devices; Compliance with Safety Standards

This product has been designed to comply with power consumption limitations according to safety standards. Please use devices and interface ports that comply with related standards.

### Avoid Shock, Vibration

Please have the product avoid any strong shock or vibration that may cause malfunction or data loss.

### Do Not Disassemble, Damage, or Remove Label

Do not disassemble the product or damage or remove the stickers or labels on the product. If the product has been disassembled, damaged, or if the label has been removed by the user, all warranties will be void. For the purpose of repairs, please contact a Samsung Service Center only or such other service providers designated by Samsung.

## **Use Genuine Accessories**

Always use genuine parts and accessories certified by Samsung. Samsung shall not be liable for damages to the product or loss of user data caused by use of non-genuine parts or accessories.

## **Use in Appropriate Temperature and Humidity**

Use the product in appropriate environment: temperature between 5°C - 35°C and humidity between 10 - 80%.

## **Use No Excessive Force in Unplugging the Cable**

Do not pull or unplug the cable using excessive force. It may cause an unstable connection or damage to the connector.

## **Perform Virus Scans and Updates**

Please follow the following safety guidelines to prevent virus infections.

- Install an anti-virus program on the computer to which the T7 Touch is connected, and perform virus scans on a regular basis.
- Always update the operating system and the anti-virus software with the latest version.
- After downloading files to the T7 Touch perform a virus scan before opening the file.

## **Clean the Product**

It is recommended that you clean the product by wiping gently with a soft cloth. Do not use water, chemical substances or detergent. They may cause discoloration or corrosion in the product's exterior, and may also cause fire or electric shock.

## **Keep Away from Children, Infants and Animals**

Small parts pose risk of suffocation. Please keep the product away from children, infants or animals to prevent them from putting the product or parts in the mouth.

# FAQ

<p>I cannot run the Samsung Portable SSD Software 1.0.</p>	<p>The Samsung Portable SSD Software 1.0 can only run on certain OS versions (or newer).</p> <p>Please see below for supported OS versions:</p> <ul style="list-style-type: none"> <li>• Windows OS: Windows 7 or higher</li> <li>• Mac OS: Mac OS X 10.10 or higher</li> </ul>
<p>The “USB storage unexpectedly removed” message appears on the status bar of my mobile device.</p>	<p>In order to use the Samsung Portable SSD Software 1.0, permission to access the USB device is required. This message appears when the access permission is removed from the mobile device. When you launch the mobile Samsung Portable SSD app, you can use the T7 Touch normally again.</p>
<p>When I connect the T7 Touch to devices other than a PC, they do not recognize the T7 Touch.</p>	<p>The T7 Touch was developed for use with Windows OS and Mac OS PCs and mobile devices. When connected to devices other than those, the T7 Touch may not be recognized or use of its features may be restricted depending on their level of support. Moreover, if you have enabled security mode with Password, you cannot enter your password from non-PC or non-mobile devices and thus will be unable to access data stored on the T7 Touch. Please disable the security mode before using the T7 Touch with such devices.</p>
<p>I have lost my password. Can I disable security mode?</p>	<p>No, you cannot. If you lose your password, you cannot disable the security mode. Therefore, make sure not to lose it. However, if you’ve enabled fingerprint security mode, you can unlock T7 Touch.</p>
<p>My T7 Touch is not recognized by devices.</p>	<p>Please make sure that the T7 Touch is connected securely to the USB port.</p> <ul style="list-style-type: none"> <li>• Some PCs may not recognize the T7 Touch when connected to the USB 2.0 port if the current exceeds the maximum limit (500 mA) described in the Power Specifications. In such cases, please try a different USB port.</li> <li>• If you use cables other than the one included in the product package, the T7 Touch may not be recognized.</li> </ul> <p>If the T7 Touch is correctly connected but still not recognized by devices, find the Service Centers specified in the User Manual or on the Samsung website (<a href="https://www.samsung.com/semiconductor/minisite/ssd/support/cs/">https://www.samsung.com/semiconductor/minisite/ssd/support/cs/</a>), and make an inquiry.</p>
<p>After connecting T7 Touch and PC, Motion LED is activated randomly.</p>	<p>Motion LED may be activated randomly depending on I/O operation.</p>

# Product Specifications and Certifications

## Product Specifications

Model	MU-PC500	MU-PC1T0	MU-PC2T0
Capacity	500GB	1TB	2TB
Interface	USB 3.2 Gen 2 (10Gbps), backwards compatible		
Data Transfer Speed*	1,050 MB/s		
Dimensions	85 x 57 x 8 mm (3.3 x 2.2 x 0.3 inch) (L x W x H)		
Weight	58 g (2.04 oz.) (2TB)		
Recommended User's System Specifications	Windows 7 or higher; Mac OS X 10.10 or higher; or Android Lollipop (version 5.1) or higher		

\* Max data transfer speed is measured based on Samsung's internal testing standards with the enclosed USB cable. Performance may vary depending on host configuration. To reach maximum transfer speeds of 1,050 MB/s, the host device and connection cables must support USB 3.2 Gen 2 and UASP mode must be enabled.

## Regulatory Compliance



### KC (Korea Certification)

Identification Symbol: Refer below

Name: Samsung Electronics Co., Ltd.

Manufacturer / Manufacturing Country: Samsung Electronics Co. Ltd / Republic of Korea

Manufacturing Year and Month: Marked separately

Rating / Model: Refer below

Manufacturer: SAMSUNG Electronics Co. Ltd.

Model	Rating		Identification Symbol
MU-PC500	5V	1.5A	R-R-SEC-MU-PC500
MU-PC1T0	5V	1.5A	R-R-SEC-MU-PC1T0
MU-PC2T0	5V	1.5A	R-R-SEC-MU-PC2T0

\* This EMC compliant (Class B) device for homes is intended for use in domestic environment and can be used in any region.



## FCC (Federal Communication Commission)

United States Federal Communication Commission (FCC) regulations

Note that any alteration or modification, not authorized expressly by the party responsible for compliance to regulations, may result in voiding user's authority to operate the device.



This equipment has been tested and verified to comply with FCC CFR Part 15, Restrictions on Class B Digital Devices.

These restrictions are implemented to prevent the emission of harmful electronic magnetic waves when device is used in residential environments. This device generates, uses and emits radio frequency energy, and may cause harmful radio interference to wireless communications if not installed and used according to the guideline. However, it does not guarantee absence of radio interference in certain installed environments. If harmful radio interference occurs to a radio or TV reception when the device is turned on or off, the user must prevent such interference through one of the following measures.

- Adjust direction of or relocate reception antenna
- Increase distance between the device and the receiver
- Plug receiver and device on outlets on separate circuits
- Seek assistance from qualified radio/TV technicians or retailer
- This device complies with Part 15 of FCC regulations
- This device does not cause electromagnetic interference
- If any interference is received, including interference that may cause operational problems to the device, it may be operated on two conditions that ensure normal operation. This product was designed for indoor-use only.

\* FCC Notice: Note that any alteration or modification, not authorized expressly by the party responsible for compliance to regulations, may result in voiding the user's authority to operate the device.

Unique Identifier: Check the label on the product

Responsible Party: Samsung Electronics America QA Lab

19 Chapin Rd. Building D Pine Brook NJ 07058

Tel: 1-973-808-6362, Fax: 1-973-808-6361



## CE (Conformity European)

Hereby declares that this/these product(s) is/are in compliance with the essential requirements and other relevant provisions of Directive 2014/30/EU, 2014/35/EU and 2011/65/EU.

In door use only.

### EU Compliance Contact information

Samsung Service PO Box 12987, Dublin, Ireland

## **WEEE (Waste Electrical and Electronic Equipment)**

This marking on the product, accessories or literature indicates that the product and its electronic accessories (e.g. charger, headset, USB cable) should not be disposed of with other household waste at the end of their working life. To prevent possible harm to the environment or human health from uncontrolled waste disposal, please separate these items from other types of waste and recycle them responsibly to promote the sustainable reuse of material resources.

Household users should contact either the retailer where they purchased this product, or their local government office, for details of where and how they can take these items for environmentally safe recycling.

Business users should contact their supplier and check the terms and conditions of the purchase contract. This product and its electronic accessories should not be mixed with other commercial wastes for disposal.

## **Innovation, Science and Economic Development Canada**

This Class B digital apparatus meets all requirements of the Canadian Interference-Causing Equipment Regulations.

ICES-003 Compliance Label

CAN ICES-3 (B)/NMB-3(B)