

此页不印刷(本文件共18页)

SIZE:100mm X 125mm

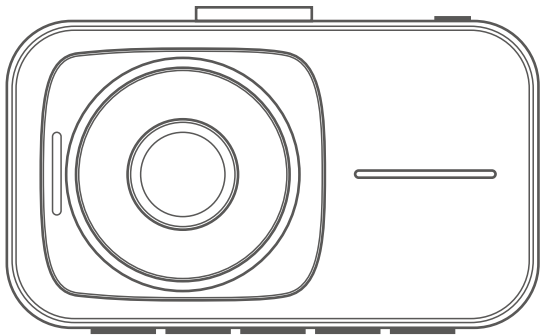
材质:封面铜版纸 内页:书纸

工艺:封面过亚膜

注意: 不要随便删减空白页 (特别是封面内页不能出现印刷内容)

NO:20250704-16

# 4K UHD DASH CAMERA USER MANUAL







Scan the QR code to get the online PDF document of the multi-language instruction manual.



**IOS/Android**

If you have any questions about our dash cam, please contact us.

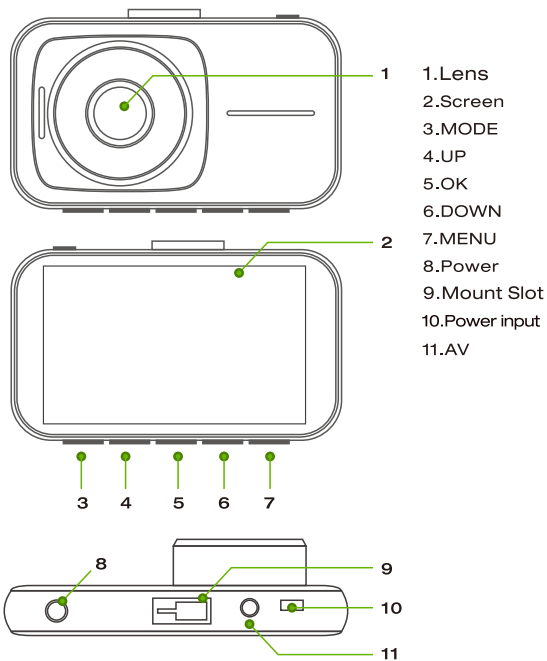
**DC@yoomail.com**

We will do our best to provide solutions based on your issues.

## Important Notice

- This product is intended for use in vehicles only. Do NOT install the camera in a location where it could obstruct the driver's view of the road (including mirrors) or interfere with the deployment of the airbag.
- When using a new SD card, please format the SD card in the dash cam before starting the recording.
- This camera records video at high resolution. Make sure to use a U3 or higher-speed Micro SD card. It supports cards ranging from 128GB to 256GB.
- Ensure that the camera lens is clean and unobstructed.
- DO NOT leave the camera in direct sunlight for extended periods, or in environments where the temperature may exceed 140°F (60°C).

## Interface and Button Function



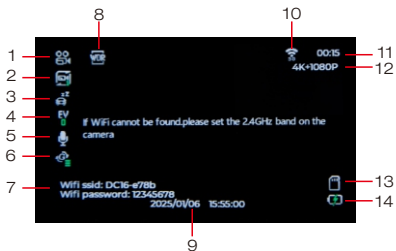
## Button Function

<b>Power</b>	<ul style="list-style-type: none"><li>• Short press to turn off/on the screen. Long press to power on and off.</li></ul>
<b>MODE</b>	<ul style="list-style-type: none"><li>• In standby mode, briefly press the button to toggle between video recording and playback.</li></ul>
<b>UP</b>	<ul style="list-style-type: none"><li>• In the Video Recording Menu, Playback Mode Menu, and Setup Menu, briefly press the button to select an option and adjust values.</li><li>• During video recording, briefly press the button to switch between front and rear image display modes.</li><li>• In Playback Mode, briefly pressing the button allows you to select media files.</li></ul>
<b>OK</b>	<ul style="list-style-type: none"><li>• In Standby or Video Recording Mode, briefly press the button to start or stop video recording.</li><li>• In the Settings Menu, briefly press the button to confirm selections and adjustments.</li><li>• In Playback Mode, briefly press the button to select and play recorded files.</li></ul>
<b>DOWN</b>	<ul style="list-style-type: none"><li>• In the Settings Menu, briefly press the button to select an option and adjust values.</li><li>• During video recording, briefly press the button to turn audio recording on or off.</li><li>• In Playback Mode, briefly pressing the button allows you to select media files.</li><li>• Press and hold the button to choose Off, 5G or 2.4G.</li></ul>
<b>MENU</b>	<ul style="list-style-type: none"><li>• During video recording, briefly press the button to lock or unlock the video.</li><li>• In Standby Mode and Playback Mode, briefly press the button to access the selected option in the menu.</li></ul>

## A. Video recording Mode

The camera will automatically enter Video Recording Mode and begin recording when connected to a car charger and powered on.

A red dot flashing in the top-left corner indicates that recording is in progress. Press the OK button to stop recording, or press it again to resume recording.



1. Mode
2. Loop recording status
3. Parking monitoring
4. Exposure value
5. Audio recording
6. Gravity sensor
7. WIFI name and password

8. WDR
9. Date/time
10. WIFI red status
11. Recording time
12. Resolution
13. SD card status
14. Battery status

## Video Recording Menu



### Resolution

Adjust the recording pixel parameters.

Front + Rear Camera: 4K + 1080P, 2.5K + 1080P,  
1080P + 1080P

Front Camera only: 4K, 2.5K, 1080P.

### Loop Recording

Option: 1 Minute / 2 Minutes / 3 Minutes.

This function allows you to set the video file length to 1, 3, or 5 minutes. When the SD card's storage is full, it will automatically overwrite the oldest file. We recommend enabling the loop recording function to prevent the memory card from running out of space and stopping the recording.

(1-minute setting by default).

### Exposure

Option: -3/ -2/ -1/ 0/ 1/ 2/ 3.

Adjust video brightness.

### WDR

Option: ON / OFF.

Wide Dynamic Range: Turn on to optimize video quality with a wider light range and improved image details.

## **G-Sensor**

Option: OFF / Low / Medium / High.

The G-sensor detects significant or sudden shock or movement. When triggered, the camera will automatically lock the current recording file to prevent it from being overwritten. Detection sensitivity can be adjusted accordingly.

## **Record Audio**

Option: ON/ OFF.

Turn audio recording on or off.

## **Date/Time**

Set the actual date and time.

## **Parking Monitor**

Option: ON/ OFF.

This function is designed to protect your car after parking. The camera is equipped with a small-capacity lithium battery. After you stop the car and the camera turns off, it will automatically turn on when the camera detects a shock or collision, record a short locked video, and then shut down automatically.

(Tips: If you want 24/7 parking monitoring to protect your car, please use a hardwiring kit to power the camera. The hardwiring kit needs to be connected to the car's fuse. If you need a hardwiring kit, please contact after-sales customer service through the after-sales email address.)

## **Rear Camera with Mirror Function**

This function allows you to switch between a mirrored and original image for the rear camera.

## **WiFi**

You can set Wi-Fi to turn off, 2.4G and 5G.

## **Screen Saver**

Option: Off / 1 Minute / 3 Minutes / 5 Minutes

Set the time for the LCD display to automatically turn off after no operation, while the camera continues recording.

## **Button Sound**

Option: ON/ OFF

Turn on or off the button sound.

## **Language**

Option: English / French / Spanish / Polish / German / Italian / Russian / Japanese

Switch the language as needed.

## **Frequency**

Option: 50Hz / 60Hz

Select the power frequency according to your region to avoid interference with other electronic equipment.

(In the USA and Canada, set it to 60Hz).

## **Format**

This function will format (erase all data) the Micro SD card.

Warning: When formatting the card, all files will be erased.

Upload all files you wish to save to your PC BEFORE formatting the card.

## **Default Setting**

Reset all settings to the factory preset. Please set it carefully, as the original personalized settings will be lost after resetting.

## **Switch Sound**

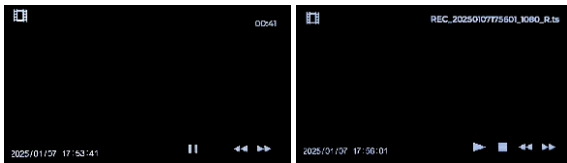
Option: ON/ OFF.

Turn on and turn off the startup and shutdown sounds.

## **Version**

To check the device version.

## B. Playback Mode:

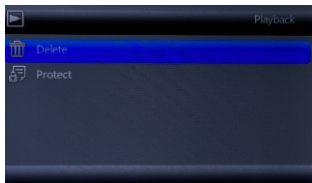


The playback on the dashcam can only be previewed and locked.

**Tip:** It is more convenient to manage files from the video list in the mobile app.

1. Stop the video recording, then press the MODE button to enter Playback Mode, where you can view all the files on the dashcam.
2. Use the UP and DOWN buttons to scroll through the recorded files, and press the OK buttons to play or pause the selected file.
3. Press the MODE button to exit and return to the previous mode.

## Playback Mode Setup Menu



**Delete:** Delete the recorded files.

**Protect:** Use this option to Lock and Unlock files, locked files will not be overwritten by loop recording.

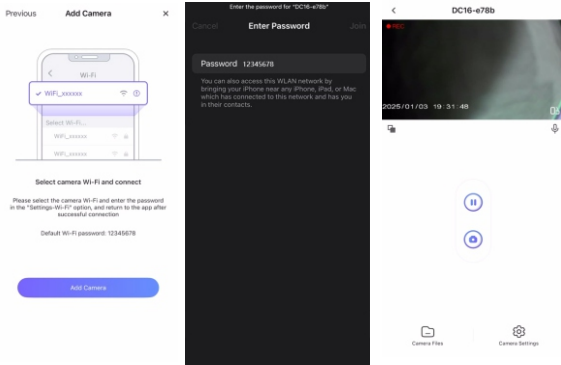
## APP Connection

Download and install the "Viidure" app by scanning the QR code with your mobile phone.

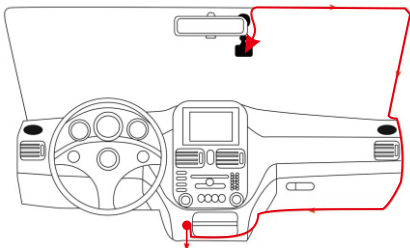


1. Turn on the Wi-Fi function of the dash cam.
2. Open the "Viidure" app, then click "Add Camera."
3. Find the Wi-Fi name (e.g., DC16-XXXX), and enter the default Wi-Fi password: 12345678 to connect.

Note: Once the camera is successfully connected to your mobile phone via Wi-Fi, you can perform real-time video previews, change camera settings, and play back videos on your phone.



## Set up and Installation



### Cigarette lighter Socket

1. Use the suction cup mount to install the dashcam on the windshield. The recommended position is near the rearview mirror, facing forward. Adjust the lens angle for optimal coverage.
2. Plug the included power adapter into the car's cigarette lighter socket. The indicator will light up, meaning the power is on.
3. Connect the power cable to the camera. For a cleaner look, route the excess cable alongside the interior trim as shown in the diagram.
4. Install the rearview camera on the rear windscreen (inside the car). Adjust the lens angle for optimal coverage, then connect the rear camera connector to the main unit.
5. After installation, please start the engine and perform a bench test to make sure all functions work well.

Route the rear camera cable to the front of the car and connect it to the main unit. There are 2 pictures for reference.



Wiring Method A



Wiring Method B

## Specification:

Screen Display	3 inch LCD Screen
Lens	170° Wide Angle Lens
Video Resolution	Front+Rear Camera: 4K+1080P/ 2.5K+1080P/1080P+1080P Front Camera only: 4K/ 2.5K/1080P
Video Format	Mp4
Video Coding	H.264
Video Mode	Loop Recording
Loop Recording	1 Min / 2 Min / 3 Min
G-Sensor	Supported
Audio Recording	ON / OFF
Storage	Micro SD Card (Up to 256GB)
External Power Supply	5V / 2A
Storage Temperature	-20°~60° ( -4°F~140°F )
Operating Temperature	-10°~50° ( 14°F~122°F )



