

VEVOR[®]

TOUGH TOOLS, HALF PRICE

Technical Support and E-Warranty Certificate www.vevor.com/support

WATER DESCALER MODEL:BSQ-Q1

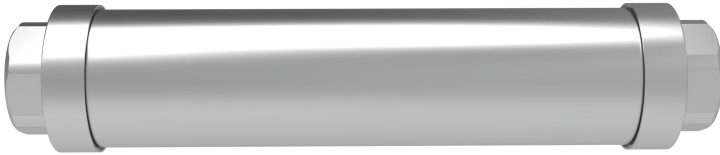
We continue to be committed to provide you tools with competitive price. "Save Half", "Half Price" or any other similar expressions used by us only represents an estimate of savings you might benefit from buying certain tools with us compared to the major top brands and does not necessarily mean to cover all categories of tools offered by us. You are kindly reminded to verify carefully when you are placing an order with us if you are actually Saving Half in comparison with the top major brands.

VEVOR[®]

TOUGH TOOLS, HALF PRICE

Water Descaler

MODEL:BSQ-Q1



NEED HELP? CONTACT US!

Have product questions? Need technical support? Please feel free to contact us:

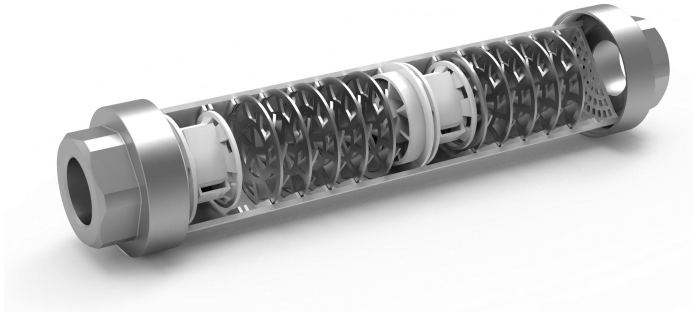
Technical Support and E-Warranty Certificate
www.vevor.com/support

This is the original instruction, please read all manual instructions carefully before operating. VEVOR reserves a clear interpretation of our user manual. The appearance of the product shall be subject to the product you received. Please forgive us that we won't inform you again if there are any technology or software updates on our product.



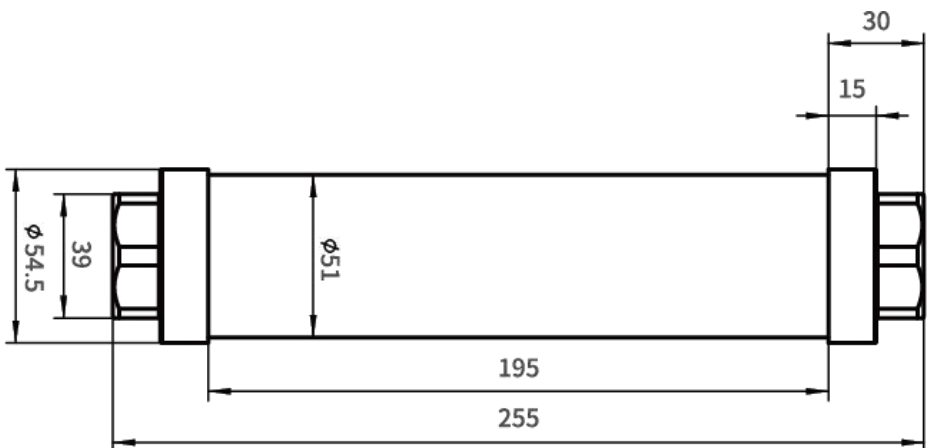
Warning-To reduce the risk of injury, user must read instructions manual carefully.

Production's Characters Description



1. Large flow of whole house scale inhibition, scale inhibition rate up to 86%.
2. Pure physical ion polarization, say goodbye to chemical soft water.
3. Military black technology, exclusive invention patent, life free.
4. No magnetic, no electricity, no external power supply, no consumables.
5. No maintenance, zero carbon and zero row, suitable for all kinds of conventional water pipes.
6. Prevent scale formation, prolong the service life of water equipment.
7. All stainless steel material durable, explosion-proof pressure resistance, no fear of high temperature.

Product size: mm



Product Introduction

Thank you for choosing the whole house central water softener produced by our company.

In order for you to correctly install, use and maintain the product and maximize the performance of the product, please read the installation and use instructions carefully and keep them properly for future reference.

When you encounter any problems in the process of use, you can directly contact our local distributors, or call the company's national hotline to get in touch with us.

The soft water dispenser in the center of the whole house can physically and electrochemically treat the water in the home, without adding any substance to the water or removing any substance from it. It retains the health benefits of the water and enhances its properties. At the same time it can also effectively prevent hot and cold pipes, household appliances, such as solid sediment and corrosion; It is suitable both for new pipelines to prevent the formation of deposits and for old pipelines to gradually remove existing deposits.

Note: The presence of powder in the kettle does not mean that the water softener in the center of the house is ineffective. It is a transformed aragonite, with a rag or fingers can be wiped away.

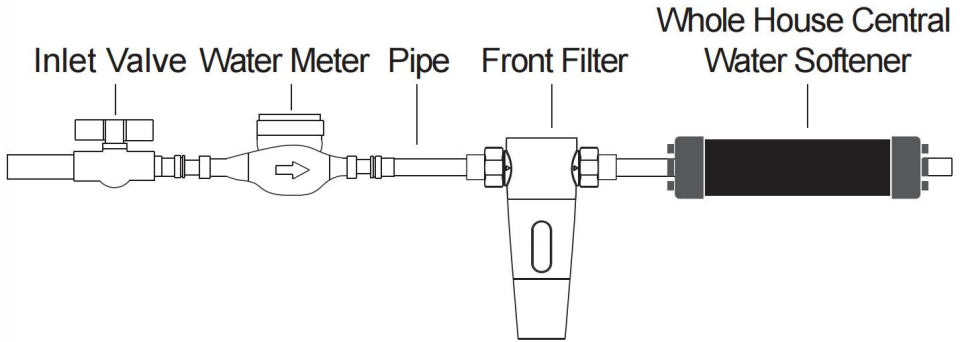
Product Installation

Advice

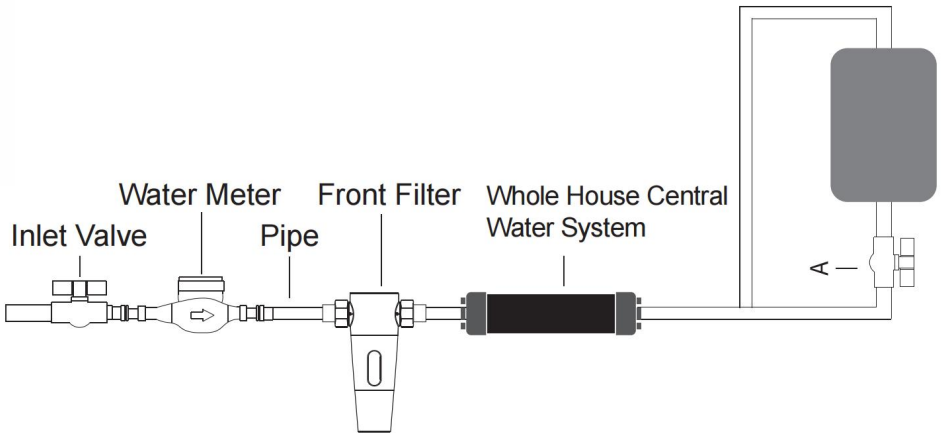
In order to prevent impurities accumulation in the soft water device from affecting the scale inhibition effect, it is recommended to use this product with the prefilter. The installation sequence is shown in the following connection diagram.

Diagram of connection

1. Standard installation on the water supply system



2. Install on the non-circulating hot water system



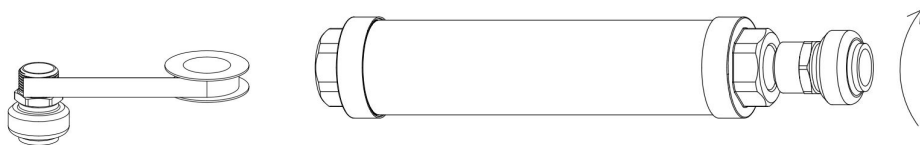
Installation Instructions:

1. The whole house central soft water can be installed horizontally or vertically on the water pipe.
2. When installing the central water softener of the whole house, the water flow direction of the water pipe should be consistent with the equipment. The arrow indicates the same. Failure to comply with this condition will affect the positivity of the equipment constant operation and efficiency.
3. If the thread size is incorrect and a adapter is required, use the teflon tape to wrap 4 to 5 turns around the thread and then screw it onto the product.

4. First close the main inlet water valve, then measure the product or product and adapter length, mark the pipe to be installed and intercept the pipe at the corresponding distance. Clean cross sections and pipe interiors and prepare the corresponding pipe adapter.

5. Connect this product to the pipe through the thread or adapter, in the middle can be wrapped with teflon tape to ensure that no water leakage.

6. The product can operate in water with electrical conductivity of 50~4000uS/cm.



Note: In order to ensure that there is no water leakage, the adapter after wrapping the teflon tape is not screwed in completely, as long as there is no water leakage.

Product parameters :

Product name	Central softener throughout the house
Product model	BSQ-Q1
Scale inhibition principle	Pure physical ion polarization
Applicable temperature	0℃~99℃
Installation	Horizontal or vertical
Apply to water quality	Municipal tap water
Apply pressure	0.15~1Mpa

Packing List:

Whole House Central Softener.....1pcs
 Connect Adapter.....2pcs
 Teflon tape volume.....1pcs
 Manual.....1pcs

Manufacturer: Shanghaimuxinmuyeyouxiangongsi

Address: Shuangchenglu 803nong11hao1602A-1609shi, baoshanqu, shanghai 200000 CN.

Imported to AUS: SIHAO PTY LTD. 1 ROKEVA STREETEASTWOOD NSW 2122 Australia

Imported to USA: Sanven Technology Ltd. Suite 250, 9166 Anaheim Place, Rancho Cucamonga, CA 91730

UK	REP
-----------	------------

YH CONSULTING LIMITED. C/O YH Consulting Limited Office 147, Centurion House, London Road, Staines-upon-Thames, Surrey, TW18 4AX

EC	REP
-----------	------------

E-CrossStu GmbH
Mainzer Landstr.69,
60329 Frankfurt am Main.

VEVOR®

TOUGH TOOLS, HALF PRICE

Technical Support and E-Warranty Certificate

www.vevor.com/support