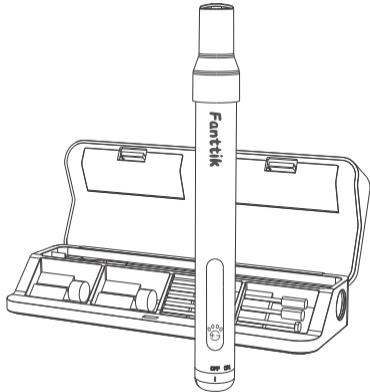


Fanttik

F2 Master Pet Pet Nail Grooming Kit

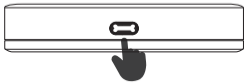
User Manual

Please read this instruction manual carefully before use and keep it for future reference.

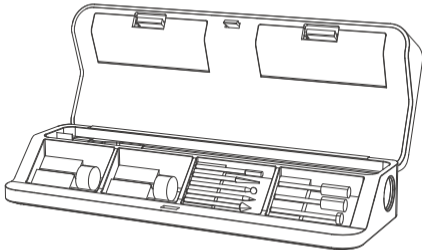


Quick Operation Guide

Open the storage case

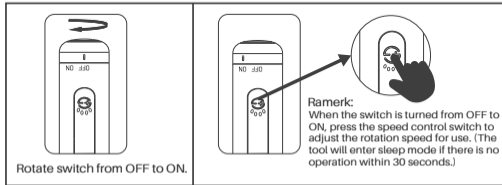


Press the unlock button located in the middle of the case lid, then open the case.

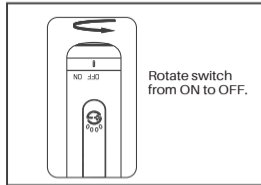


Remark: Always hold the tool away from your face. Accessories can be damaged during handling, and can fly apart as they come up to speed. This is not common, but it does happen. Please wear goggles to better protect yourself.

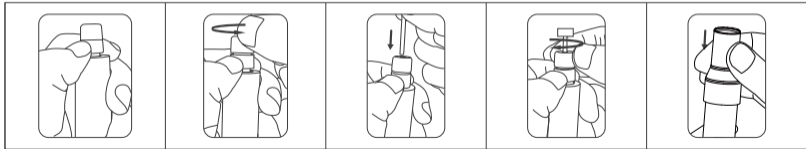
Rotate safety switch energized and press the speed control button to turn on the tool and speed control.



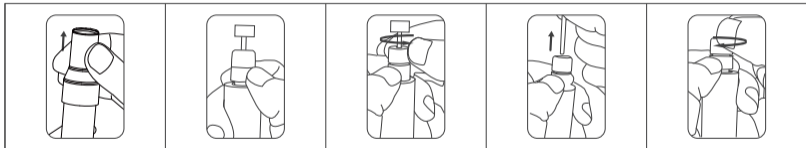
Rotate switch to turn off the tool.



Loosen the collet nut and clamping accessories.



Loosen the collet nut and remove accessories.



Contents

1.Safety Warnings	01
2.Packing List	07
3.Product Overview	08
4.Nail Grooming Operating Instructions	15
5.Specifications	23
6.Troubleshooting	24
Warranty	25

Safety Warnings

WARNINGS

Read all safety warnings and all instructions. Failure to follow the warnings and instructions may result in electric shock, fire and/or serious injury to people or animals.

SAFETY RULES FOR PET GROOMING

- Keep the tool away from water. Exercise extreme caution when using the rotary tool near a tub or pet washing area, as water entering the power tool increases the risk of electric shock.
- Use personal protective equipment. Always wear eye protection.
- This product is intended solely for grooming the toenails of dogs or cats. It is not intended for use as a dental drill, nor for human or veterinary medical applications. Failure to comply may result in serious injury.
- Do not use the safety shield when all components have not been installed in accordance with the operating instructions. Any other use constitutes misuse and may result in injury.
- For most pet grooming applications, the recommended maximum operating speed is 12,000 RPM, with the recommended speed setting being "2". However, factors such as nail thickness may necessitate using higher speeds. Exercise extreme caution when operating at higher speeds: limit the time the nail is in contact with the sanding surface, as higher speeds can cause heat buildup and

may injure the pet. Always monitor the pet for signs of discomfort, and stop grooming immediately if such signs are observed.

- Keep pet hair away from spinning parts. Hair can become entangled in the tool, which may injure the pet. If hair is accidentally caught in the rotary tool, turn off the tool immediately and untangle it from the device. For pets with particularly long hair, use an old sock to cover the pet's toe, foot, and leg to isolate the nail. Push the nail through a small opening at the sock's tip for grooming. Keep styptic powder on your hand in case of bleeding. Styptic powder is available at most pet supply stores—follow the packaging directions for proper use.
- Some pets may get nervous around the tool, so it's advisable to keep the pet secure. Since you'll need both hands to groom the nails, having another person help restrain the pet can be helpful.

SAFETY RULES FOR ROTARY TOOLS

- Safety warnings common for grinding, sanding, wire brushing, polishing, carving or abrasive cutting-off operations:
This power tool is intended to function as a grinder, sander, wire brush, polisher, carving or cut-off tool. Read all safety warnings, instructions, illustrations and specifications provided with this power tool. Failure to follow all instructions listed below may result in electric shock, fire and/or serious injury.
- Do not use accessories which are not specifically designed and recommended by the tool manufacturer. Just because the accessory can be attached to your power tool, it does not assure safe operation.
- The RATED SPEED of the accessories must be at least equal to the operating speed setting marked on the power tool. Accessories

running faster than their RATED SPEED can break and fly apart.

- The outside diameter and the thickness of your accessory must be within the capacity rating of your power tool. Incorrectly sized accessories cannot be adequately controlled.
- The arbor size of wheels, sanding drums or any other accessory must properly fit the spindle or collet of the power tool. Accessories that do not match the mounting hardware of the power tool will run out of balance, vibrate excessively and may cause loss of control.
- Mandrel mounted wheels, sanding drums, cutters or other accessories must be fully inserted into the collet or chuck. If the mandrel is insufficiently held and/or the overhang of the wheel is too long, the mounted wheel may become loose and be ejected at high velocity.
- Do not use a damaged accessory. Before each use inspect the accessory such as abrasive wheels for chips and cracks, sanding drum for cracks, tear or excess wear, wire brush for loose or cracked wires. If power tool or accessory is dropped, inspect for damage or install an undamaged accessory. After inspecting and installing an accessory, position yourself and bystanders away from the plane of the rotating accessory and run the power tool at maximum no-load speed for one minute. Damaged accessories will normally break apart during this test time.
- Wear personal protective equipment. Depending on application, use face shield, safety goggles or safety glasses. As appropriate, wear dust mask, hearing protectors, gloves and workshop apron capable of stopping small abrasive or workpiece fragments. The eye protection must be capable of stopping flying debris generated by various operations. The dust mask or respirator must be capable of filtering particles generated by your operation. Prolonged exposure to high intensity noise may cause hearing loss.
- Keep bystanders a safe distance away from work area. Anyone entering the work area must wear personal protective equipment.

Fragments of workpiece or of a broken accessory may fly away and cause injury beyond immediate area of operation.

- Hold power tool by insulated gripping surfaces only, when performing an operation where the cutting accessory may contact hidden wiring. Cutting accessory contacting a "live" wire may make exposed metal parts of the power tool "live" and could give the operator an electric shock.
- Always hold the tool firmly in your hand(s) during the start-up. The reaction torque of the motor, as it accelerates to full speed, can cause the tool to twist.
- Use clamps to support workpiece whenever practical. Never hold a small workpiece in one hand and the tool in the other hand while in use. Clamping a small workpiece allows you to use your hand(s) to control the tool. Round material such as dowel rods, pipes or tubing have a tendency to roll while being cut, and may cause the bit to bind or jump toward you.
- Position the cord clear of the spinning accessory. If you lose control, the cord may be cut or snagged and your hand or arm may be pulled into the spinning accessory.
- Never lay the power tool down until the accessory has come to a complete stop. The spinning accessory may grab the surface and pull the power tool out of your control.
- After changing the bits or making any adjustments, make sure the collet nut, chuck or any other adjustment devices are securely tightened. Loose adjustment devices can unexpectedly shift, causing loss of control, loose rotating components will be violently thrown.
- Do not run the power tool while carrying it at your side. Accidental contact with the spinning accessory could snag your clothing,

pulling the accessory into your body.

- Regularly clean the power tool's air vents. The motor's fan will draw the dust inside the housing and excessive accumulation of powdered metal may cause electrical hazards.
- Do not operate the power tool near flammable materials. Sparks could ignite these materials.
- Do not use accessories that require liquid coolants. Using water or other liquid coolants may result in electrocution or shock.
- Use only in well-ventilated area. Working in a safe environment reduces risk of injury.
- Allow for sufficient space, at least 6", between your hand and the spinning bit. Do not reach in the area of the spinning bit. The proximity of the spinning bit to your hand may not always be obvious.
- Do not touch the bit or collet after use. After use the bit and collet are too hot to be touched by bare hands.
- Do not alter or misuse tool. Any alteration or modification is a misuse and may result in serious personal injury.

This product is not intended for use as a dental drill, in human or veterinary medical applications. Serious injury may result.

ADDITIONAL SAFETY WARNINGS

- Keep handles dry, clean and free from oil and grease. Slippery hands cannot safely control the power tool.
- Develop a periodic maintenance schedule for your tool. When cleaning a tool be careful not to disassemble any portion of the tool since internal wires may be misplaced or pinched or safety guard return springs may be improperly mounted. Certain cleaning agents such as gasoline, carbon tetrachloride, ammonia, etc. may damage plastic parts

WARNINGS

Some dust created by power sanding, sawing, grinding, drilling, and other construction activities contains chemicals known to cause cancer, birth defects or other reproductive harm. Some examples of these chemicals are:

- Lead from lead-based paints,
- Crystalline silica from bricks and cement and other masonry products,
- Arsenic and chromium from chemically treated lumber.

Your risk from these exposures varies, depending on how often you do this type of work. To reduce your exposure to these chemicals: work in a well ventilated area, and work with approved safety equipment, such as those dust masks that are specially designed to filter out microscopic particles.

Packing list



Storage case x 1pc



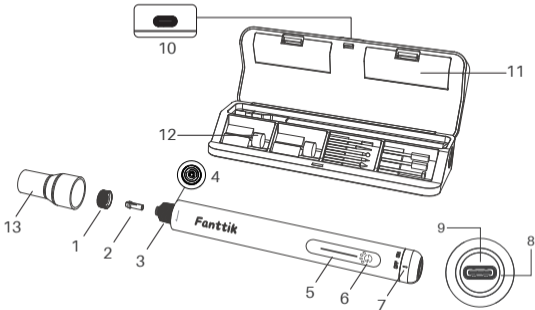
Rotary tool x 1pc

Accessories x 14pcs

- Safety shield x 1pc
- Diamond grinding bits x 2pcs
- Collet x 1pc
- Diamond nail grinding wheels x 2pcs
- Aluminum oxide grinding bits x 1pc
- Diamond engraving bits x 5pcs
- Dog tag x 2pcs

Product Overview

01. Collet nut
02. Collet
03. Shaft lock nut
04. LED light
05. Speed indicator light bar
06. Speed control area
07. ON/OFF switch
08. Battery indicator
09. Type-C charging port
10. Storage case unlock button
11. Storage space
12. Accessories
13. Safety Shield



Charging the Tool

Be sure to charge tool prior to initial use.

Insert cable (purchased separately) into type-c port(9) of rotary tool .charge tool using 5V/≤4A power adapter. Plug power adapter into standard power outlet.

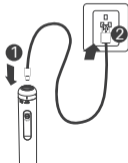
Charging indicator

The battery charge indicator (8) indicates the charging progress. During the charging process, the indicator light (8) will flashing . The battery is fully charged when the indicator light turns ON . Charge time is approximately 60 minutes.It is normal for the handle of the tool to get warm during charging.

Note: It is recommended to charge the tool every 2 months during storage. Prolonged storage may cause the battery to have a low charge level. When the battery level falls below the normal charging threshold, the charger will supply a low current to the tool, and the charging indicator (8) will not respond. Once the battery level is restored to the normal charging threshold, the charging indicator (8) will initially flash slowly for 2 seconds before starting to flash normally.

Power indicator

This tool is equipped with a power indicator (8) that tells you how much charge your battery has.When the power indicator light (8) is red,the battery is almost empty. When the red light flashes, the machine will stop shortly



Battery indicator operation

1-Turn on the ON/OFF switch(7), the battery indicator light will light up for 3 seconds.When the power indicator (8)light is white, the battery level is >30%; when the power indicator (8) light is red, the battery level is <30%.

2-In normal operation, when the battery is exhausted, the power indicator (8) will flash.

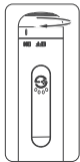
operate

Turn on the tool and Speed control

1:With your finger rotate the switch(7) from OFF to ON. At this time, the machine is awakened(the working LED(4) lights up;the speed indicator light bar(5) ON/OFF for 3 cycles; the power indicator(8) lights up for 3 seconds.)

2:Press the Speed control area(6) and the tool will start working at first gear, The speed switch is a cycle switch. If you need to adjust to another speed, please continue to press the Speed control area(6) until you find the speed you want.

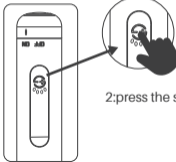
REMARK:If the tool is not activated within 30 seconds, it will go to sleep again. To restart the tool, you need to turn on the ON/OFF switch(7) again.



1:rotate the switch(7) from OFF to ON



Waiting time should not exceed
30 seconds



2:press the speed control area(6)

Gear	Speed range	speed indicator light bar(5) state
1	8,000RPM	20%
2	12,000RPM	40%
3	18,000RPM	60%
4	20,000RPM	80%
5	25,000RPM	100%

Turn OFF the tool

with your finger rotate the switch(7) from ON to OFF,The tool will stops working and the working light turns off after 10 seconds.



rotate the switch(7)
from ON to OFF

Clamping system

The clamping system consists of Collet nut, Collet ,shaft and Shaft Lock.this tool is only suitable for 3/32" collet. The operation is as below :

Add accessories to the tool

- 1:hold on the Shaft Lock(3) with your hand to Lock the drive shaft;
- 2:lock the drive shaft and Turn the collet nut(1) counterclockwise to loosen the collet (2);
- 3:Put the accessory through the collet nut(1) and into the collet 2,by inserting the accessories into the collet as far as possible to minimize

runout and unbalance;

4:lock the drive shaft and Turn the collet nut(1) Clockwise to tighten the collet (2) securely;

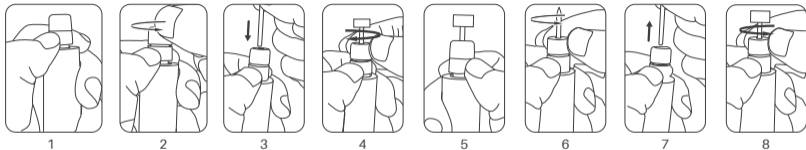
Remove the accessories from the tool

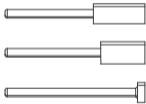
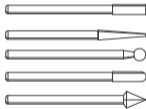
5:hold on the Shaft Lock(3) with your hand to Lock the drive shaft;

6:lock the drive shaft and Turn the collet nut(1) counterclockwise to loosen the collet (2);

7:remove the accessories form the collet(2)

8:lock the drive shaft and Turn the collet nut(1) Clockwise to tighten the collet (2) securely;





Diamond nail grinding wheels

Diamond engraving bits x 5pcs

Diamond grinding bits x 2pcs
Aluminum oxide grinding bit x 1pc

80 grit
For fast grinding
for large dogs & hard nails

150 grit
For fine grinding
delivers a smooth finish

For carving fine patterns and
precision lines on material
surfaces such as jade, wood,
ceramics, glass, metal and etc.

For fine detail work on wood,
jade, ceramic, glass and other
hard materials.
They can also be used for nail
filing.

For most pet grooming applications, the recommended
maximum operating speed is 12,000 RPM.

Nail Grooming Operating Instructions

GETTING STARTED

Grooming a pet's nails for the first time can be a worrisome experience for both the pet and pet owner. Rest assured that nail grooming does not have to be a stressful experience. By starting early and considering grooming to be part of your pet's training, your pet will grow used to the experience.

First, train your pet to feel comfortable with their paws being touched and handled before exposing them to the rotary tool. One way to do this is to massage their legs, paws, and individual toes for a few minutes at least once a day. Afterwards, create a positive association with this experience by rewarding your pet with its favorite snack.

Next, help your pet grow gradually accustomed to the rotary tool. Let your pet sniff the tool while it is turned off. Then, while keeping the tool in your hand, let your pet listen to the sound the tool makes when it is turned on. Ideally, have your pet sit or lay on its side while the tool is in your hand and running.

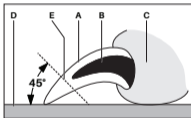
Gradually, work up to having your pet's toenails touch the rotating sanding wheel for less than a second. Do not grind the nails yet; simply let your pet become familiar with the tool. Throughout the acclimation process, continue to praise your pet and reward good behavior with a snack. This process may take a couple of days or weeks. Before long, both you and your pet will be able to relax and even enjoy the grooming time that you share together.

NAIL ANATOMY

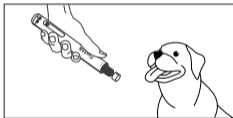
The nails/claws containing quick vessels described in this section are relevant to several types of pets, including dogs and cats. Before trimming your pet's nails, you will need to identify the quick. The diagram shows the basic anatomy of a pet's toenail. The outer nail is hard and has no feeling because it has no nerve endings. The core of the nail is the quick. It is made up of tiny blood vessels and nerve endings and is very sensitive. The quick is a vein that "feeds" the toenail. Should you cut the quick while trimming a nail, the nail will start to bleed.

Light colored nails are often transparent enough to allow you to see the quick's pink core. Dark colored nails may not allow you to see where the quick is located. Pets may have both light and dark colored nails that allow you to estimate the length of the quick.

The diagram also shows an estimate of the proper angle at which to trim a pet's nails. A rule of thumb for the proper angle is 45 degrees upwards from the bottom of the paw. The proper angle may vary according to the pet owner's wishes or the pet's unique anatomy. Trim nails so that they almost touch the ground when your pet is walking.



- A Nail / Claw
- B Quick
- C Paw
- D Floor
- E Trim line



NAIL GROOMING

!Never hold the tool by attachment. Holding the tool by attachment could cause it to unexpectedly shift, causing loss of control . Use only "golf grip" or "hand grip" method of holding the tool .

Grasp the pet's paw C to let the nail A is positioned at a 45° angle towards the grinding wheel surface and started grooming.

3 ports for any size



Small



Medium



Large

SAFETY TIPS

Recommended maximum operating speed for most pet grooming applications is 12,000/min.

Recommended speed setting is "1" and "2".

Nail thickness and other factors may require use of higher speeds.

Use extreme caution when operating at higher speeds and limit the amount of time that the nail is exposed to the sanding surface.

Use of higher operating speeds may cause heat buildup and injury to the pet. Always monitor pet for signs of discomfort and stop grooming if observed.

Support the toe and nail in one hand while using the rotary tool in the other hand. This is more comfortable for your pet as it lessens vibration on the paw.

Pushing gently on the bottom of the paw's pad extends the nail slightly for easier grooming.

It is important to let the speed of the rotary tool do the work, never apply pressure to the toenail with the spinning sanding wheel.

Pressure may cause the nail to grow too hot, resulting in discomfort for your pet. The rotary tool's spinning sanding wheel should not be kept against the nail longer than three seconds at a time. Instead of focusing on completing one nail at a time, it is recommended to briefly trim each nail on one paw, and then the other, in several passes. This allows time for the nails to cool. You may repeat this process as needed. Trim nails so that they almost touch the ground when your pet is walking.

Some pets may become nervous in the presence of the tool so it is best to secure your pet. The operator will need both hands to groom the nails, so it may be helpful to have another person assist in restraining your pet.

If hair is accidentally caught in the rotary tool, immediately turn off the tool and untangle the hair from the tool. For pets with particularly long hair, use an old sock to cover the toe, foot, and leg of the pet and isolate the nail. Push the nail out through a small opening at the tip of the sock to groom the nail. **Keep styptic powder on hand in case of bleeding.** Styptic powder is available at most pet supply stores. Follow the directions on the packaging for proper use instructions.

MAINTENANCE AND CLEANING

!! TO AVOID ACCIDENTS, ALWAYS DISCONNECT THE TOOL AND/OR CHARGER FROM THE POWER SUPPLY BEFORE CLEANING

The tool can be cleaned most effectively with compressed dry air. **Always wear safety goggles when cleaning tools with compressed air.**

Shaft and switch must be kept clean and free of foreign matter.

Do not attempt to clean the tool by inserting pointed objects through an opening.

Remove the safety shield from the tool as needed to clean out any nail rust or debris. Wash the relevant accessories with warm water and dry them thoroughly with a clean cloth or allow them to air dry before reinstalling them on the tool.

!! CERTAIN CLEANING AGENTS AND SOLVENTS DAMAGE PLASTIC PARTS.

Some of these are: gasoline, carbon tetrachloride, chlorinated cleaning solvents, ammonia and household detergents that contain ammonia.

Using the Rotary Tool

The Rotary Tool has a small, powerful electric motor, is comfortable in the hand, and is made to accept a large variety of accessories including drill bits, polishers, engraving cutters, cutting Blade. As you become familiar with the range of accessories and their uses, you will learn just how versatile the Rotary Tool is. You'll see dozens of uses you hadn't thought of before.

The real secret of the Rotary Tool is its speed. To understand the advantages of its high speed, you have to know that the standard portable electric drill runs at speeds up to 1500 revolutions per minute. The Rotary Tool operates at speeds up to 25,000 revolutions per minute. The typical electric drill is a low-speed, high torque tool; the Rotary Tool is just the opposite - a high-speed, low torque tool. The major difference to the user is that in the high speed tools, the speed combined with the accessory mounted in the collet does the work. You don't apply pressure to the tool, but simply hold and guide it. In the low speed tools, you not only guide the tool, but also apply pressure to it, as you do, for example, when drilling a hole.

It is this high speed, along with its compact size and wide variety of special accessories, that makes the Rotary Tool different from other tools. The speed enables it to do jobs low speed tools cannot do, such as cutting hardened steel, engraving glass, etc.

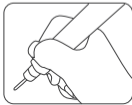
Getting the most out of your Rotary Tool is a matter of learning how to let this speed work for you. To learn about more uses and the versatility of accessories and attachments refer to this Owner's Manual

The first step in learning to use the Rotary Tool is to get the “feel” of it. Hold it in your hand and feel its weight and balance. Feel the taper of the housing.

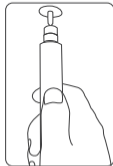


Always hold the tool away from your face. Accessories can be damaged during handling, and can fly apart as they come up to speed. This is not common, but it does happen.

For best control in close work, grip the Rotary Tool like Writing between your thumb and forefinger.



Hold the tool from the rear can be used for more aggressive operations such as grinding a flat surface or using cutoff blade . Practice on scrap materials first to see how the Rotary Tool's high speed action performs. Keep in mind that the work is done by the speed of the tool and by the accessory in the collet. You should not lean on or push the tool during use.



Instead, lower the spinning accessory lightly to the work and allow it to touch the point at which you want cutting (or sanding or etching, etc.) to begin. Concentrate on guiding the tool over the work using very little pressure from your hand. Allow the accessory to do the work.

Usually, it is best to make a series of passes with the tool rather than attempt to do all the work in one pass. To make a cut, for example, pass the tool back and forth over the work, much as you would a small paint brush. Cut a little material on each pass until you reach the desired depth. For most work, the gentle touch is best. With it, you have the best control, are less likely to make errors, and will get the most efficient work out of the accessory.

Disposal



Always adhere to national regulations when disposing of power tools that are no longer functional and are not viable for repair.

- Do not dispose of power tools, or other waste electrical and electronic equipment (WEEE), with household waste.
- Contact your local waste disposal authority for information on the correct way to dispose of power tools Li-Ion.

Specifications

Models	F2 Master Pet
Speed	8,000/12,000/18,000/20,000/25,000RPM± 10%
Collet capacities	3/32" 2.3mm
Battery	4V Max/700mA/2.8Wh
Charge port	TYPE-C
Charger specifications	5V/1A

Troubleshooting

Problem	Cause	Solution
Failure to power on	Battery exhausted	Charge the tool
Machine stops rotating during operation	The machine runs under continuous heavy load, causing over-temperature protection or undervoltage protection activated	Let it cool down, or charge the machine
Failure to install accessories	Accessory size does not match the chuck	Use the included accessories or use accessories with a shaft diameter of 2.3 mm
Failure to charge	Charging cable not plugged in properly	Replug the charging cable

Warranty

- This product is covered by a 12-month limited warranty for manufacturing defects.

929-693-6066 MON-FRI 9AM-5PM [ET]

METASEE LLC

12 GREENWAY PLZ STE 1161A HOUSTON, TX 77046-12033

www.fanttik.com

support@fanttik.com

Made in China



RoHS

