



VBELL 1

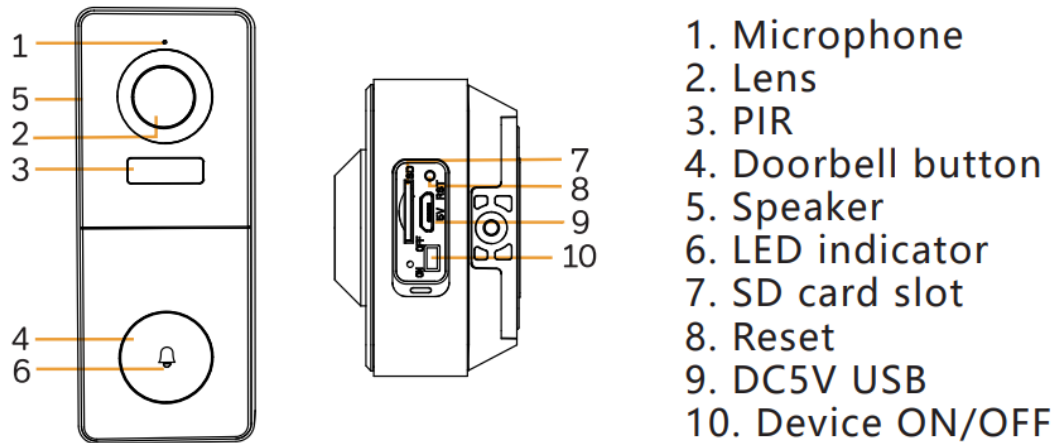
VBELL 1	1
1. Video Doorbell Introduction.....	3
Device Overview.....	3
Status Indicator.....	4
Charge Doorbell.....	4
2. Setup and Installation	4
Set up the Doorbell.....	4
Install the Doorbell	8
Pair the Chime.....	10
3. View Your camera	11
Adjust Device list.....	11
Multiple Views.....	12
Live video.....	13
Pick up the ring call.....	14
Manually Capture.....	15
Manually Record	15
Full Screen	16
2-Way Audio	17
4. Alarm and Detection	17
Set up Motion detection.....	17
Human shape detection.....	18
Alert Plan	19
Set up Push notifications.....	20
Set Tamper Alarm.....	21
5. Recording and Playback.....	22
Micro SD card Recording	22
Cloud storage service	23
Playback.....	25
Album	28
6. Camera settings	29
Camera Name	29
Share Arenti Devices with others.....	29

Device information	31
Installation Guide	32
Basic function	33
Speaker volume	33
Voice Message	34
Time setting.....	35
Night Vision.....	35
Power Management.....	36
Wireless Chime.....	36
Amazon Echo Show & Google Home.....	37
Device version.....	38
Delete the Device.....	39
7. Use Arenti APP	40
Messages	40
Sharing History.....	41
Alarm Message.....	41
System Messages	41
Scene.....	42
Account	42
APP Settings.....	44
8. FAQ and Troubleshooting.....	47
FAQS	47
Troubleshooting.....	48

1. Video Doorbell Introduction

Device Overview

VBELL1 is wireless battery video doorbell that are compact and can be seamlessly integrated into your home. Loaded with smart features, they can do many things like check the live video wherever you are. Or send you customized motion alerts. With unbeatable prices, they make smart and high-quality home protection accessible to everyone.



Status Indicator

Front Status Indicator	Camera status
No light on	Not power /stand by
Constant blue/slow flashing	Working properly/ WiFi Connection succeeded
Blue fast flashing	Upgrading
Red flashing slowly	Waiting to connect/ WiFi is not configured
Red flashing fast	Network abnormal/ WiFi connection failed

Charge Doorbell

Take off the rubber, plug in the Micro-USB charge the camera.

Fully charge it before mounting the doorbell at your front door.

Charge indicator	Constant red: camera in charging
	Constant blue: camera fully charged
Charging time(5V/1A)	10 hours from 1%-100%

Notices: The battery life varies depending on usage. In most common cases, a camera may have up to 10 events(visitors) per day and each recording lasts 20 seconds on average. Under this scenario, the camera battery life can last 3 to 6 months.

2. Setup and Installation

Set up the Doorbell

- What you'll need.

1. Wi-Fi and a working broadband internet connection with at least 2 Mbps upload speed.
2. A phone or tablet with iOS 8 or later or Android 4.2 or later
3. A Phillips screwdriver or power drill with Phillips driver bit

- How the system works

After Doorbell connects with WIFI, allows you to check the view anytime and anywhere via Arenti APP.

Normally Doorbell camera will be in sleep mode to reduce the battery consumption, it will wake up and work when the PIR motion sensor is triggered.

- Power on

Find the power key at bottom of the camera body , switch ON to start the Camera, you will see the front network indicator light will on and flash red slowly means boot up is finished.

Connect Arenti APP

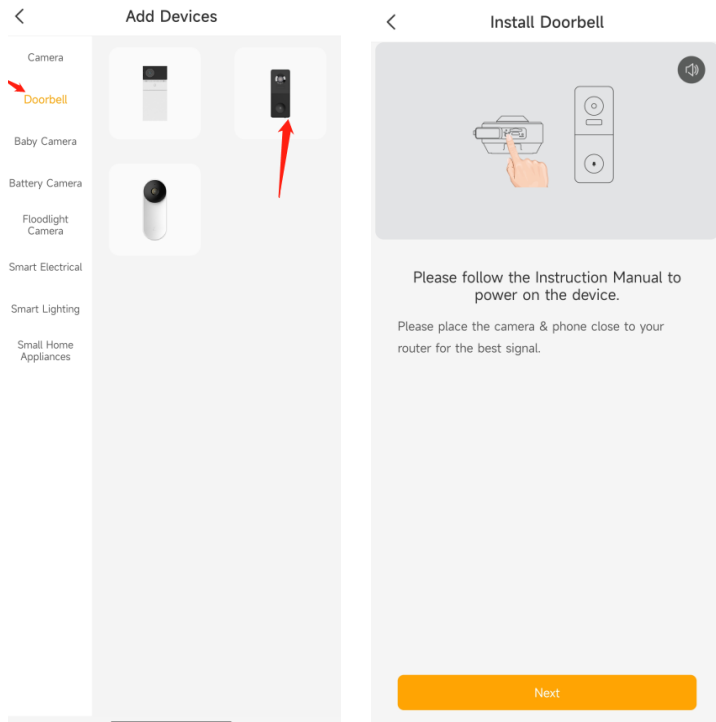
Scan QR code or search 'Arenti on App Store (IOS); Play Store (Android). Download and install Arenti APP. Open the APP tap 'Sign up'' to create and account and log in.



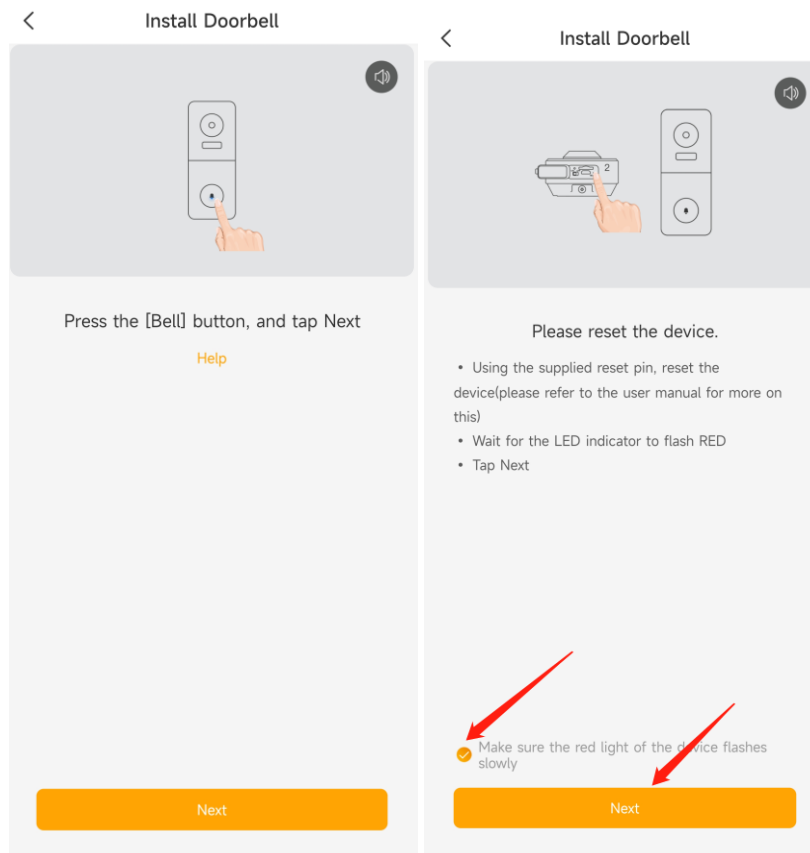
Open the Arenti APP home page, Click '+' at the right top page. Follow the guide on the APP to add the camera.



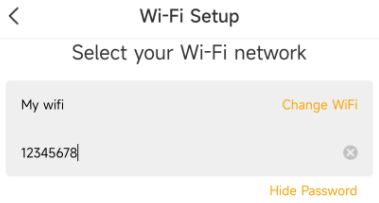
1. Choose Doorbell  on APP and power on the Vbell1 camera



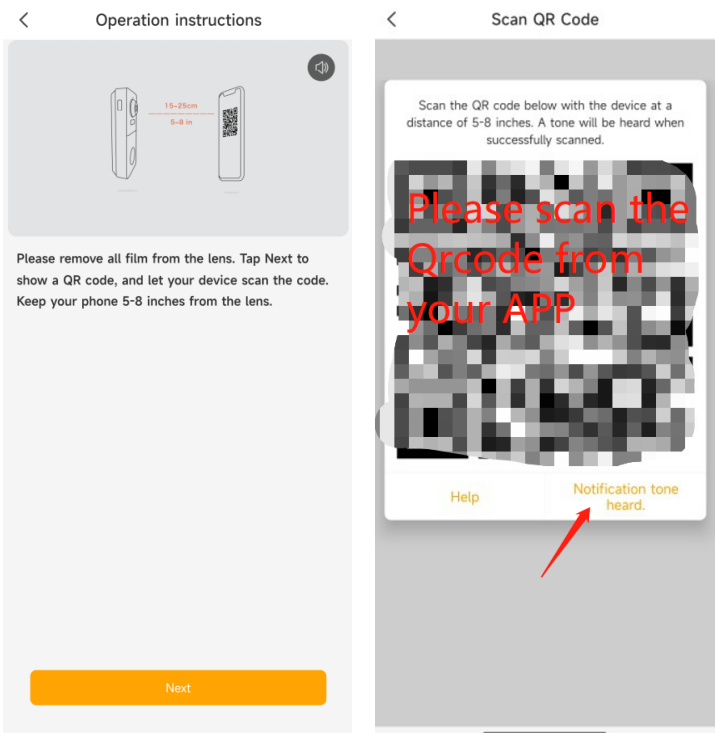
2. Waiting for camera to boot up around 10s. Press the Bell, confirm camera is working. **Make sure the network indicator red flashing slowly and enable it** . If not, please reset the camera(move the camera head and u top find the reset bottom), then wait the network indicator red flashing slowly. Then tap 'Next'.



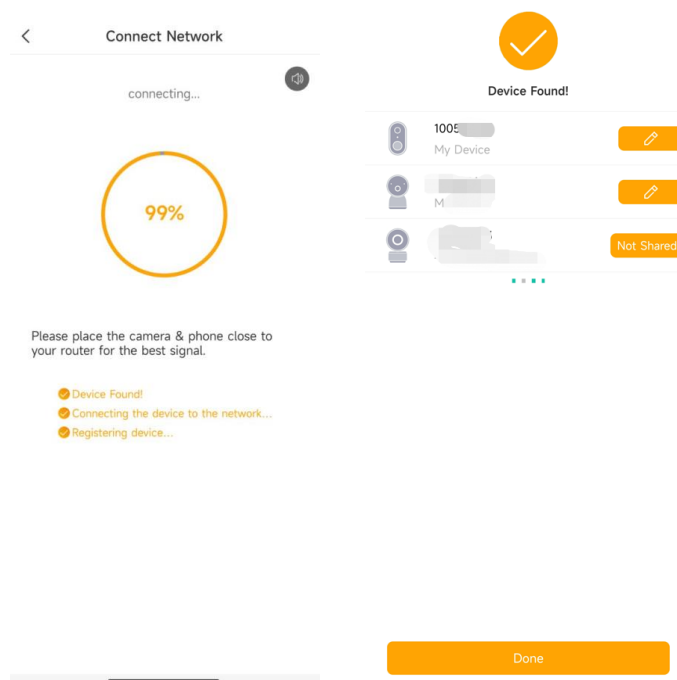
3. Select the wifi you want camera to connect, and input the correct Password. Tap 'Next'.



4. APP will generate the QR code for camera to scan. Keep your phone 5-8 inches(15-25cm) from the lens . **Please scan the QR code when indicator in red flashing slowly.**
5. A tone will be heard when successfully scanned. Then tap 'Notification tone heard' After reading QR code, camera get the WiFi information(name/password) from APP QR code, and start to connect the WiFi. **The network indicator will turn to red fast flashing.**



6. Around 10-30s later, **the camera indicator turns to constant blue, means camera connect the WiFi.** And APP will find the device and add it to APP. Tap 'Done' to finish the process.



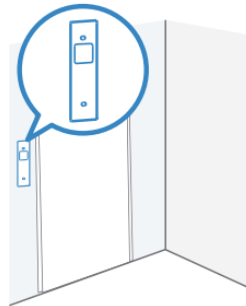
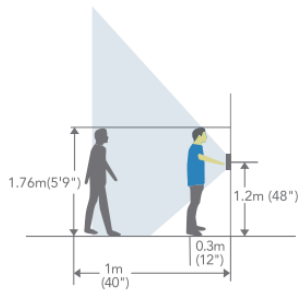
Note: When adding the camera, ensure the WIFI network is good, the camera is normally turned on, and the indicator light flashes red slowly. After the connection is successful, the indicator light is blue.

Install the Doorbell

Find a position where you can get the desired field of view.

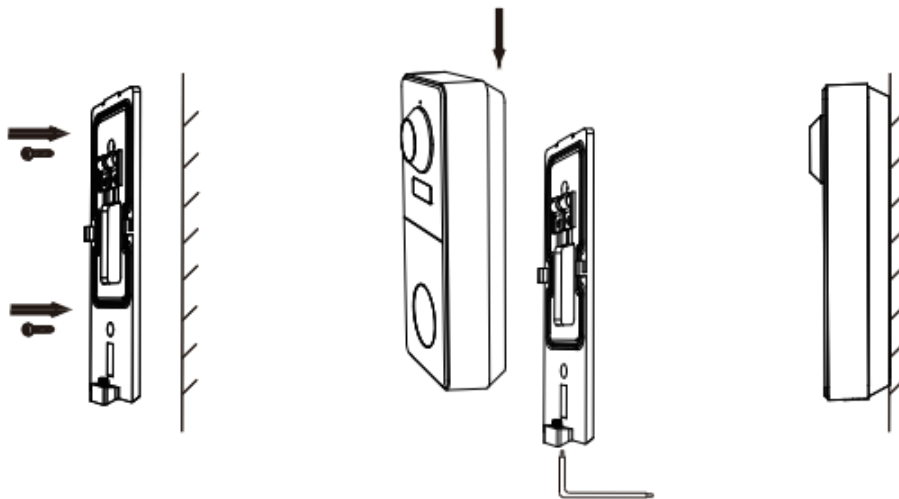
Consider the below factors:

1. Avoid direct sunlight;
2. Keep it in range of your router WIFI;
3. Avoid the front of the lens facing the plant or porch light; Avoid facing a busy road, heat source avoids false triggering of PIR.
4. Place it 1-1.6 meters above the ground-close enough to see someone's face and talk to them through the camera. Make sure that the camera can see what you want to see.



Note: the back plate is fixed on the back of the door bell, please release the back plate screw, and take off the back plate before install it.

Install with screws:



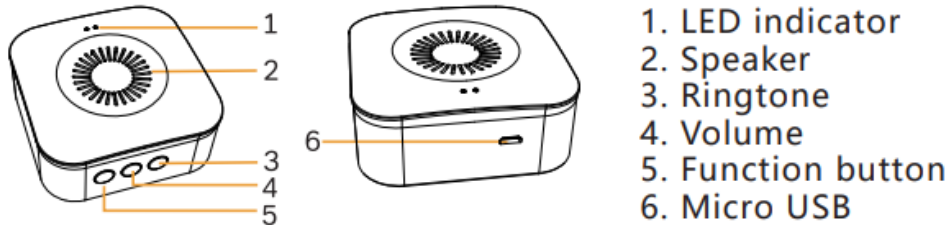
Install with 3M Stickers:



Installation Precautions:

To prevent injury, the unit must be securely fastened to the wall by the installation instructions

Pair the Chime



LED indicator of chime:

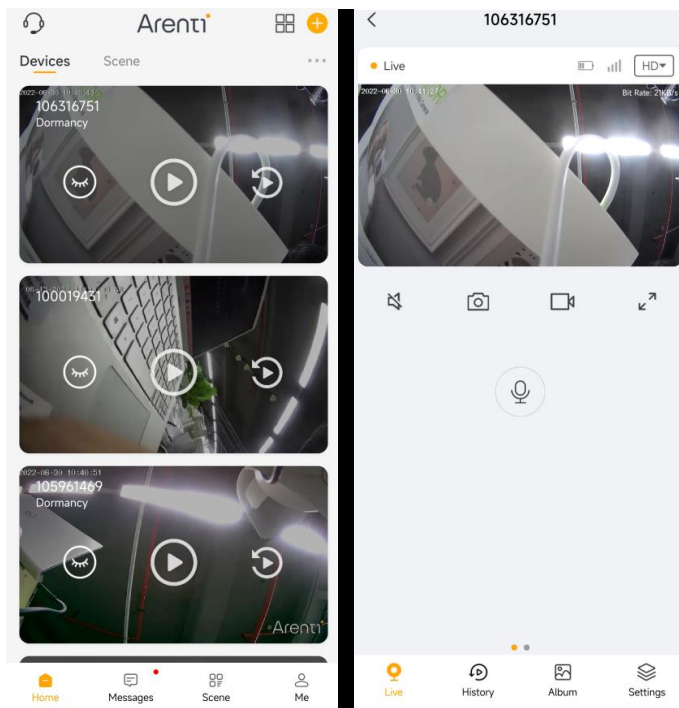
Flashing red light -- Wait for pairing

Fixed blue light --- Succeed to pair

Install the battery or plug in the cable to power on the camera:

1. Short press " " (within 2 seconds), the status light flashes red slowly and the chime will be in pairing mode.
2. Press the doorbell button to pair, when the chime status light turns off, and the song will play automatically, the chime pairing is successful at this time. Description:
1. The chime can connect to maximum eight doorbells. 2. When the chime is in pairing mode, press the " 🛠️ " again (within 2 seconds), the chime will automatically exit the pairing mode.
3. After adding the chime successfully, the volume will be adjusted to the maximum automatically. When it is at the minimum volume, it will return to the maximum volume after pressing " 🔊 ".
4. Each press " 🎵 ", will play the next song along with blinking blue light

3. View Your camera



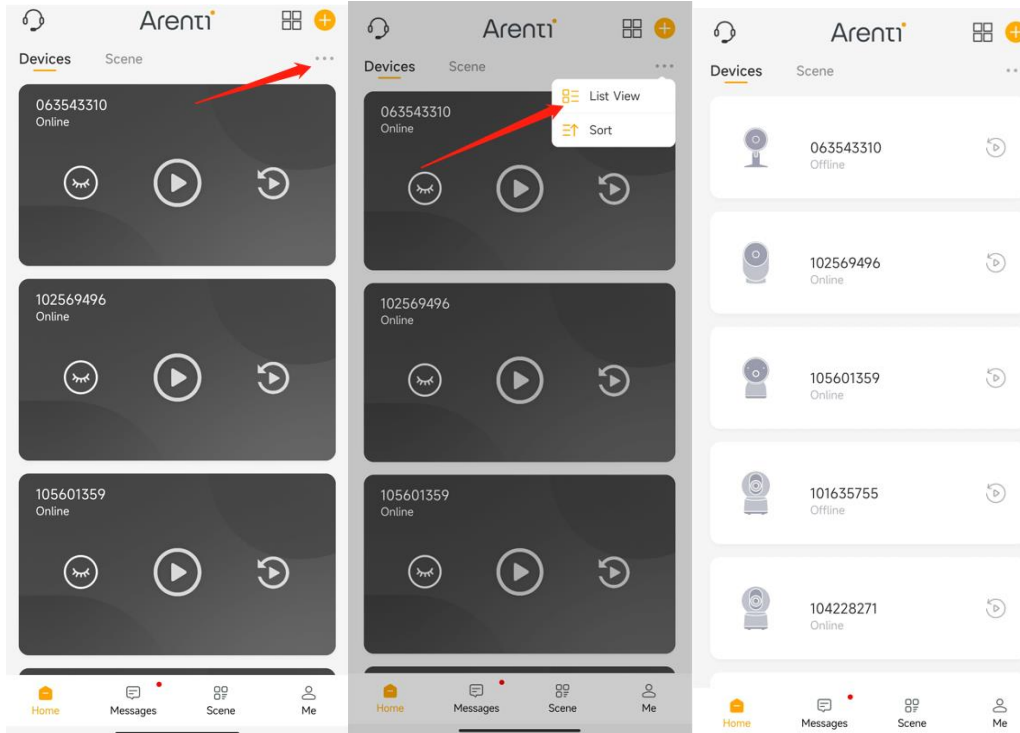
	Home page privacy		Multiple views
	Play Camera Live video		Play camera history video
	Get technical support		Add new device
	Video audio ON/OFF		Manually capture, the image will save to the album
	Full screen mode		Manually record, the recording will save to the album
	Device Wi-Fi signal		Sub-stream mode
	Press to talk(2-way audio)		Main-stream mode
Bit Rate: 8KB/s	Current network bit rate		

Adjust Device list

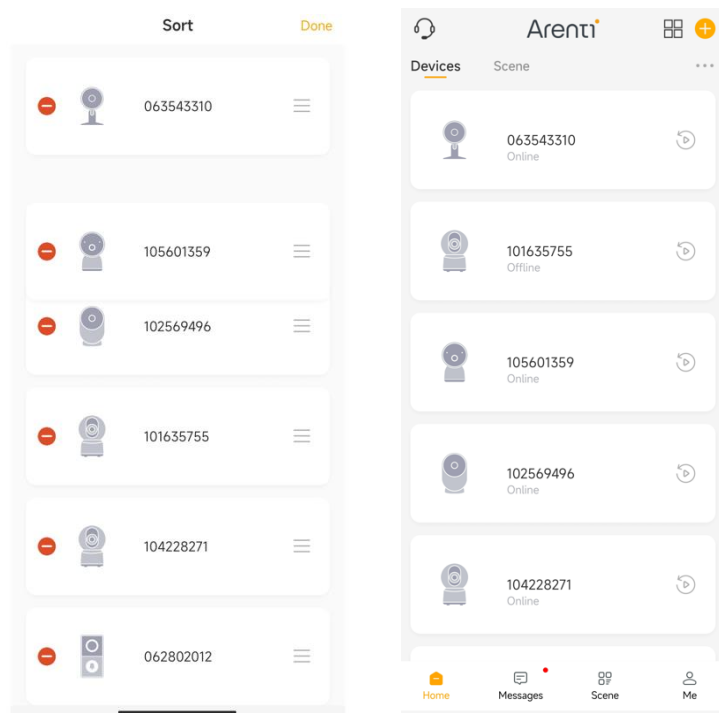
You can just the list view (List/Grid) and sequence of your device.

List View

Tap the icon, you will see Sort, tap the List view, the device will be the simple camera icon in list. Tap the Sort to adjust the device sequence.

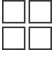


Press and hold to move the camera to the sequence you need. Then tap Done ,back to the device list.

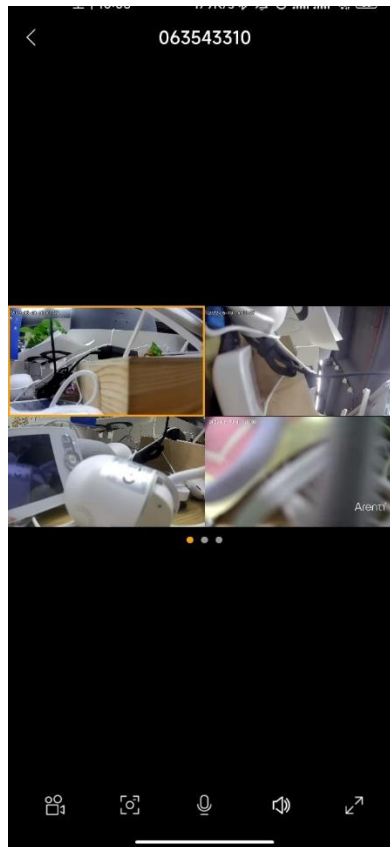
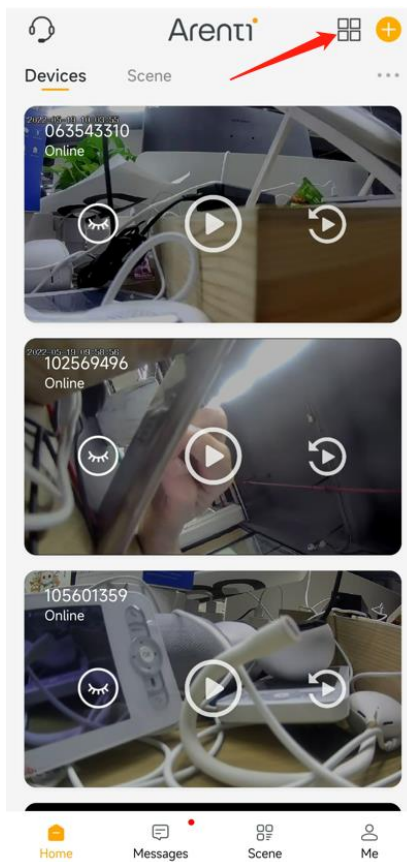


Multiple Views


If you have 2 or more cameras added in your Arenti App, you can view multiple streams at the same time.

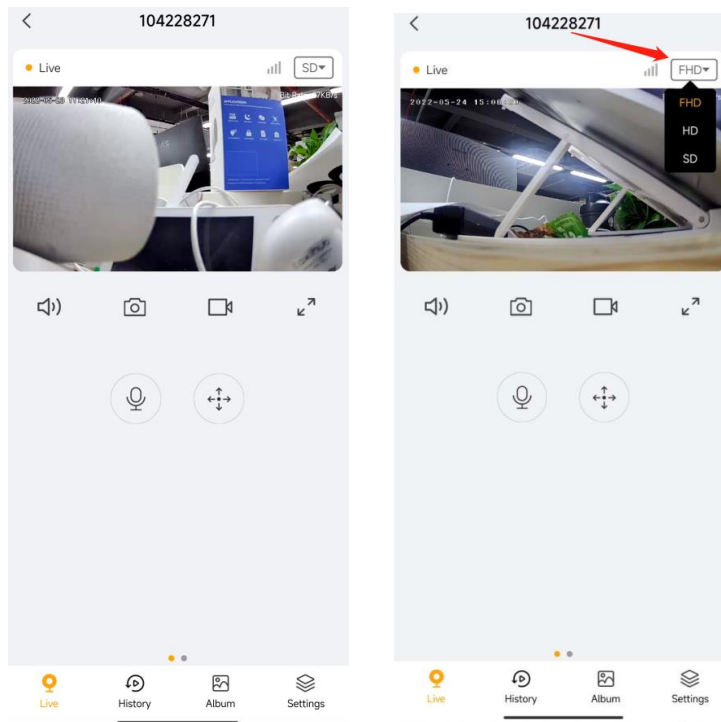
Tap  icon , the first 4 cameras will show in one screen. You can slide the screen to check next 4 camera.

You can choose camera to 2-way audio, Manual capture, record.



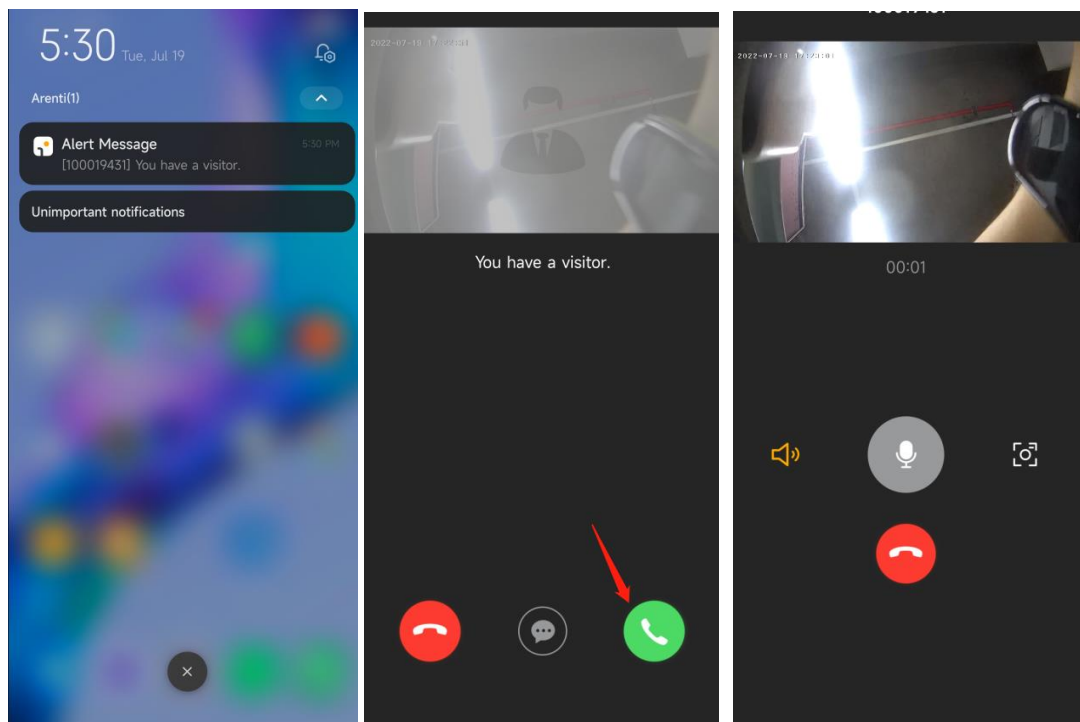
Live video

Tap  icon to view the camera Live video. Tap the SD to choose SD/HD different resolution.




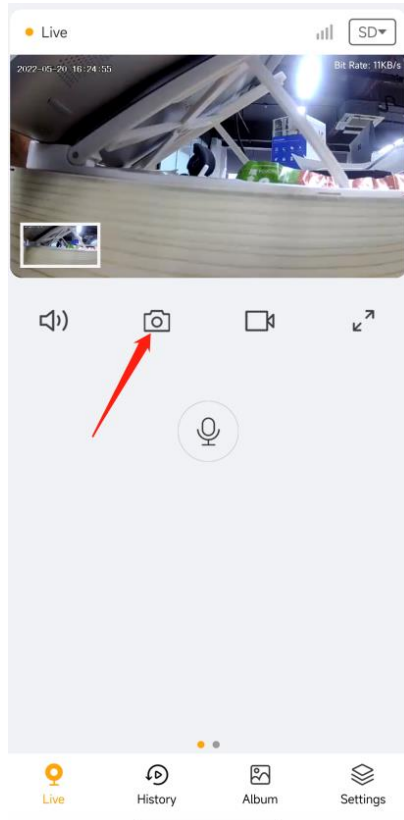
Pick up the ring call

After visitor pressing the Bell, you will receive the notification of the call, and tap the notification, will open the Arenti APP. You can choose to answer or hang up the call. After picking up the phone, you will possible to talk with the person at front the doorbell.


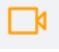


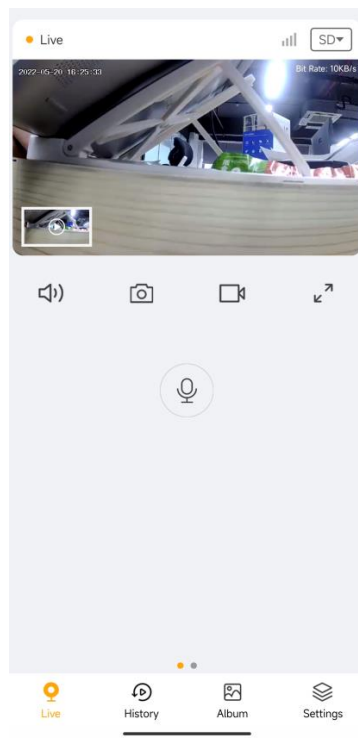
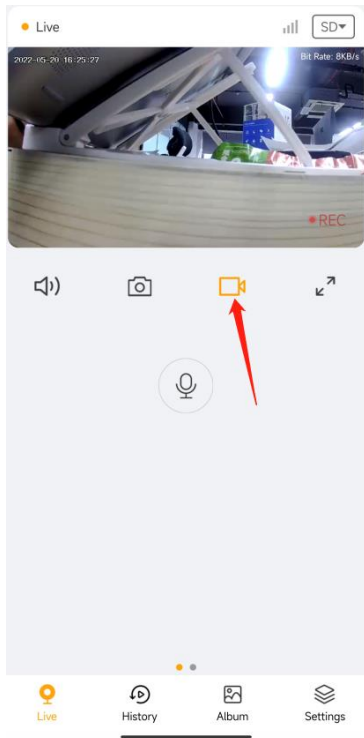
Manually Capture

Tap  icon to capture the image. Image will save in Album.




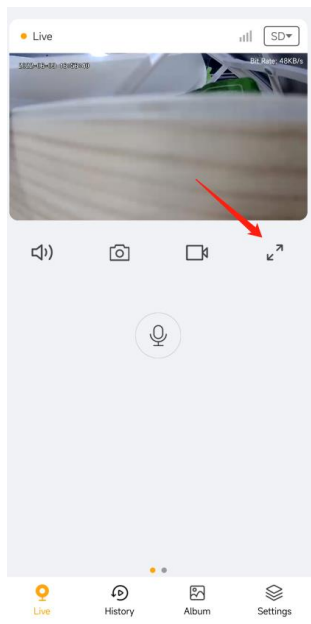
Manually Record

Tap  icon to start record the video, tap  to stop the record, the record will save in Album.




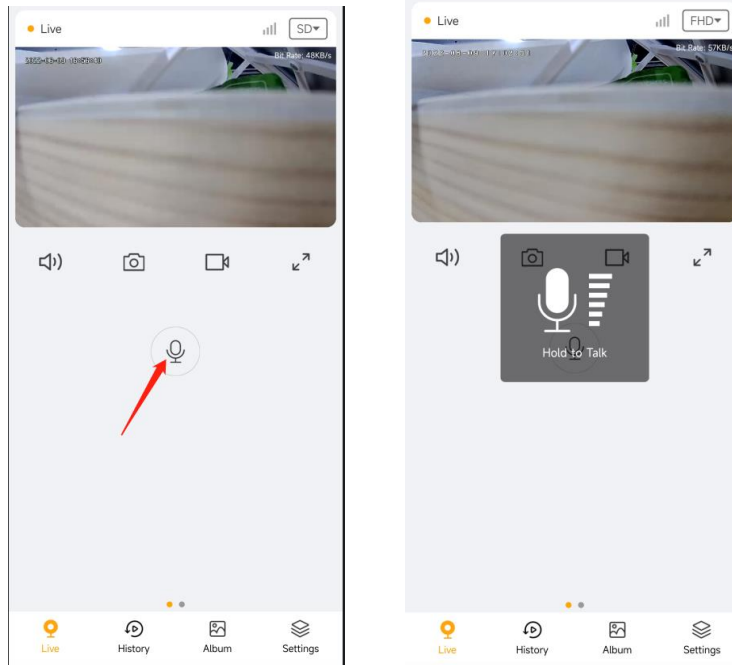
Full Screen

Tap  icon to check the video in full screen.



2-Way Audio

Tap/Press the  icon to talk.



4. Alarm and Detection

About Motion Detection

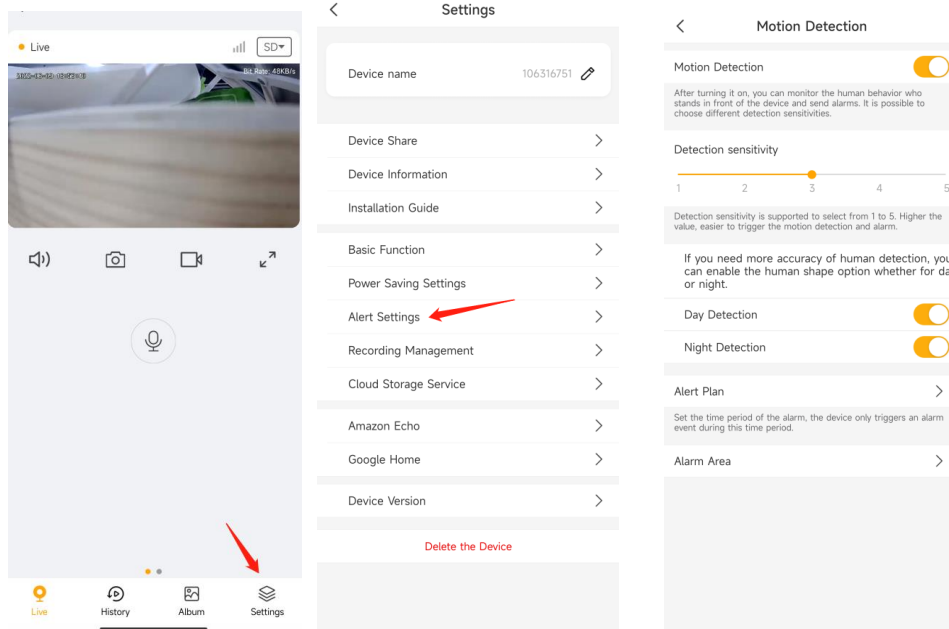
Arenti camera determines whether each macroblock has moved by dividing the grid. When the number of moved blocks reaches a certain proportion of the number of armed blocks, the alarm will start. The working principle of motion detection is that camera will judge it as motion when differences in 2 frames reach 0.5%-10% (customize by adjusting motion sensitivity) of the image. When the picture changes, the number calculated and compared will exceed the threshold and instruct the system to automatically make corresponding process.

Set up Motion detection

Go to camera live video page- Settings-Alert Settings-Motion detection-On
Battery camera equipped PIR sensor , It will detect the body heat from 2~10 meters. And you can customize the detection range to meet your needs.
Set from Arenti APP-Device (tap device to live video page)-Settings-Alert settings- Motion Detection-Sensitivity

Sensitivity	Detection range
Level 1-2 (Low)	Up to 2-5 meters
Level 3 (Mid)	Up to 5-8 meters
Level 4-5 (High)	Up to 8-10 meters

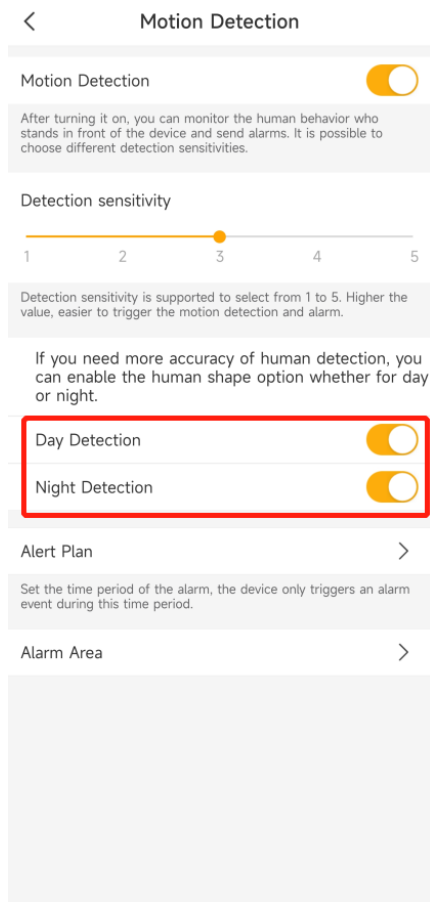
Note: sun's rays, cars, animal, other heat source will trigger the pir sensor and cause the false alarms.



Human shape detection.

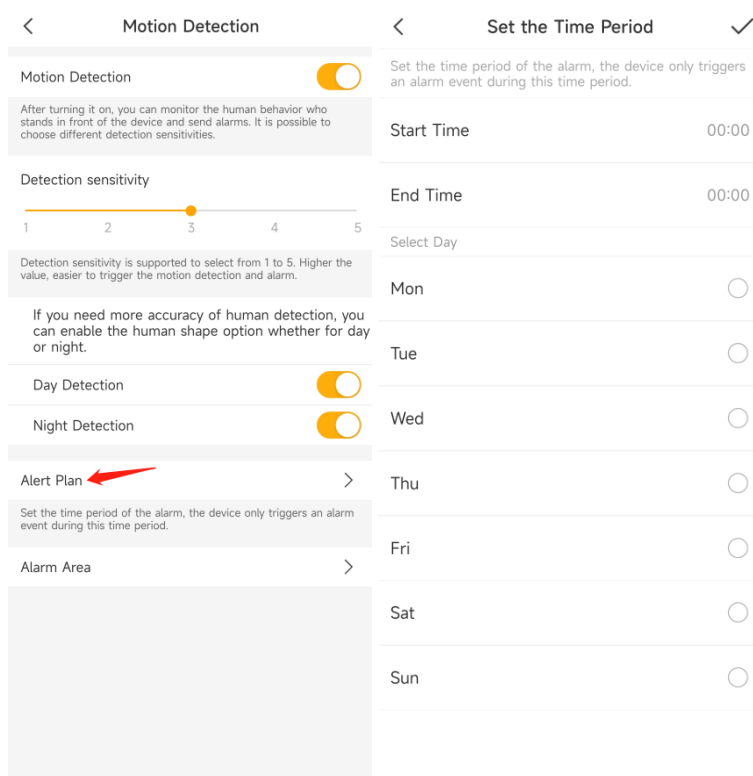
To reduce the false alarms. Camera support set the day/night human detection. If enabled, it will alert only when detected the human shape .

Note: The arithmetic is not 100% accurate; Especial at the night, camera may think that's not a human shape and not send alert.



Alert Plan

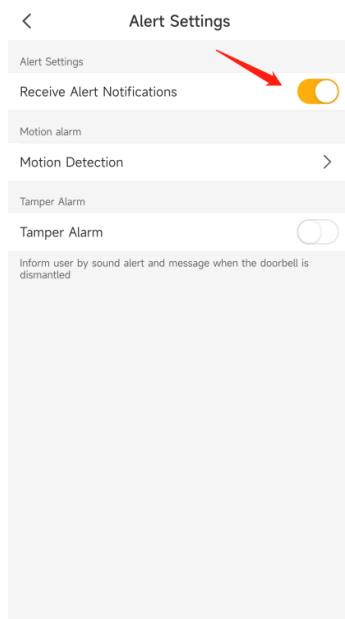
User can set the time period of the alarm, the device only triggers alarm event during the time period



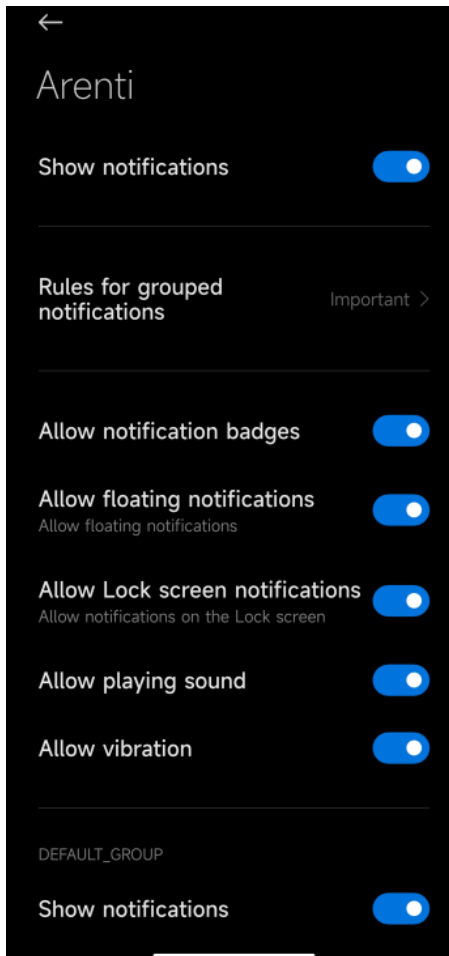
Set up Push notifications

1. Go to camera live video page- Settings-Alert Settings-Receive Alert Notifications: Enable

Your mobile phone will receive the Alarm notification when camera detect the motion.

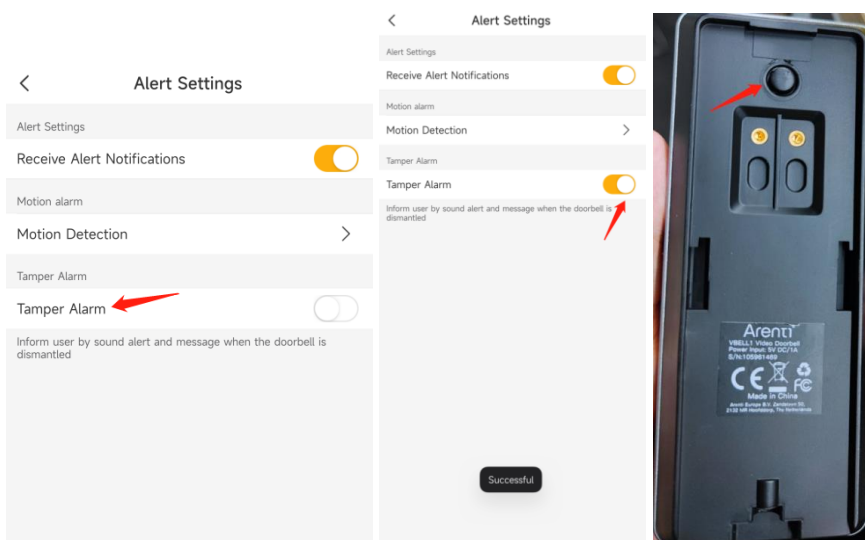


2. Set your phone to allow Arenti App to send push notifications. Go to your phone Settings, find Notifications and among the App list find the Arenti App. Make sure the mobile phone allow the Arenti App send notifications.
Mobile phone-Settings-Notifications-APP notifications-Arenti APP



Set Tamper Alarm

Set the Tamper Alarm, after enable it. If the doorbell is ddismantled, doorbell will make a sound alert and a notification will send to user APP.



5. Recording and Playback

Micro SD card Recording

With an Micro SD card inserted the camera can save motion alarm recordings or continuous recordings to the Micro SD card.

Choose a suitable SD card

1. Recommend SD card spec: Class 10 and above, Format FAT32, 2G-128G, brand Micro SD Card

2. Choose the SD Card Capacity

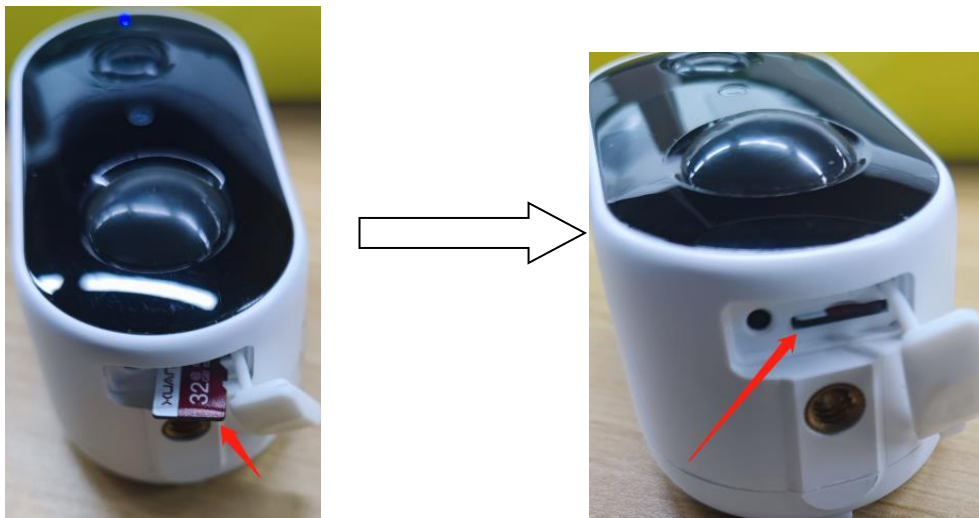
Example : 32GB SD card with 1080P camera

Event recording (30s for one event,20events per day):around 8 months

Note: When full, Camera will overwrite the oldest recordings.

Insert the Micro SD card

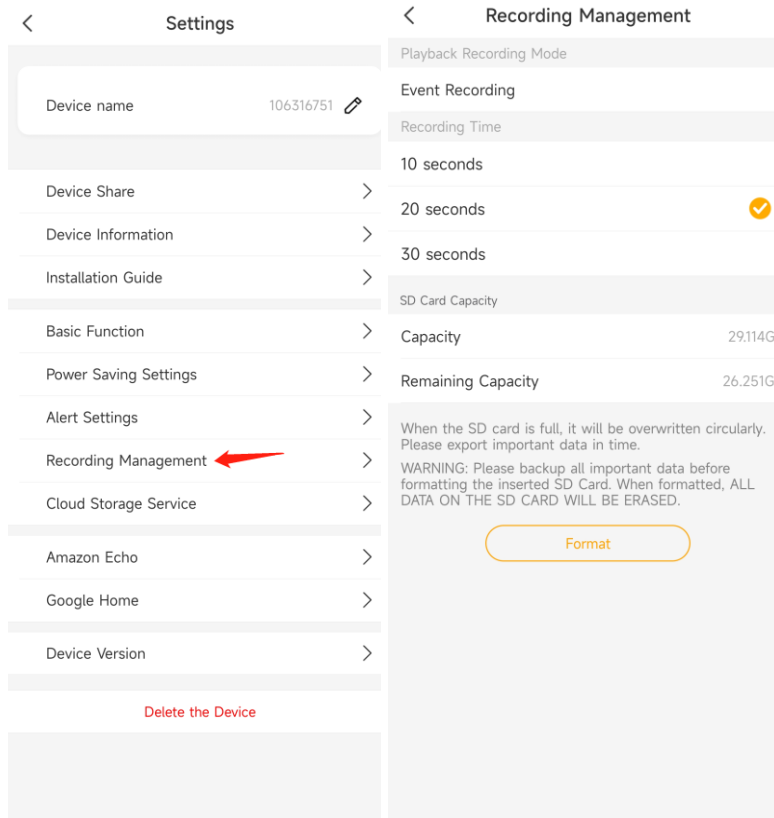
Take off the rubber, following the pictures to push the Micro SD card until it's locked or you hear a 'Click 'sound.



Set Recording(Micro SD card)

1. Event recording: Arenti APP-Device(tap device to live video page)-Settings-Recording Management- Event recording-Choose the Recording time-10/20/30 sseconds

Note: It will only record the motion alarm recordings to the SD card. Each event recordings 10/20/30 seconds



SD Card Capacity

After you insert the properly SD card, You can check the SD card Capacity/Remaining Capacity information.

Support to Format the SD card by APP. After format the SD card, all data will be clear in SD card.

Cloud storage service

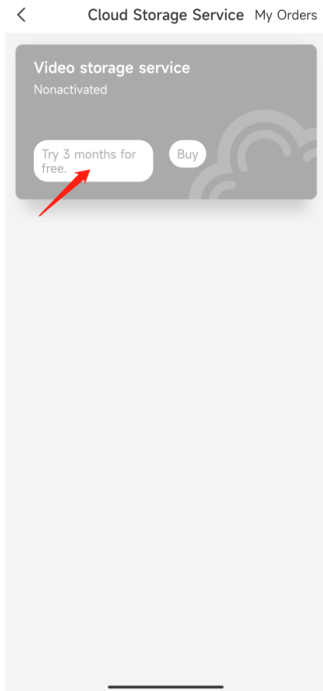
Arnti will give away 3 months free event cloud storage service for each camera. Each device needs its own plan, Cloud Storage Service Fee will be charged per device.

Note: the rules may change in the future

Activate Cloud storage service

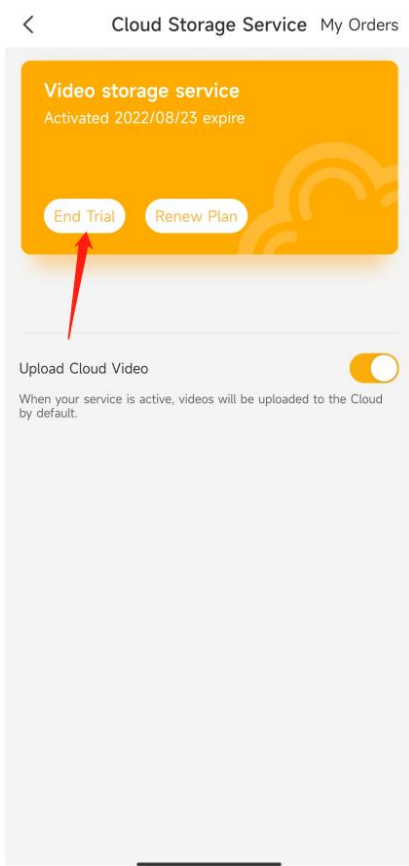
1. Activate the free cloud storage service

Arnti APP-Device(Tap device to live video page)-Settings-Cloud Storage Service-Try 3 months for free



2. End free trial event cloud storage service

Arenti APP-Device(Tap device to live video page)-Settings-Cloud Storage Service-End trial



3. Buy/renew the event cloud storage service plan

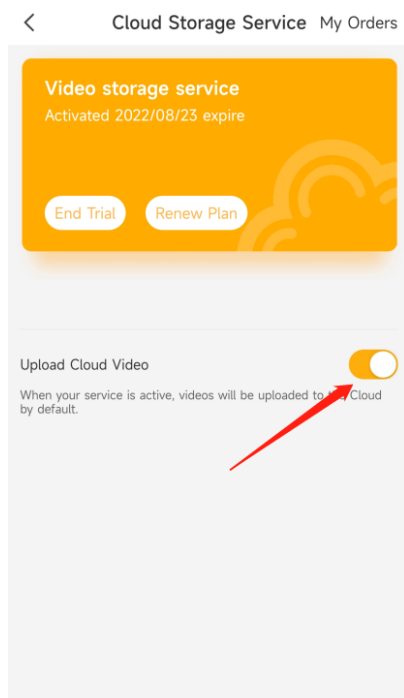
Tap Buy/Renew Plan icon to order the cloud storage service for your device.

Set recording-Cloud storage


1. **Event recording:** You can use the free trial or buy/renew the event cloud storage service plan to save the motion alarm recordings to the cloud storage
2. **Full day recordings:** You can buy/renew the event cloud storage service plan to save the Continuous recordings to the cloud storage
Note: Please end trial the free event cloud storage service first, then camera will start the service that you bought.

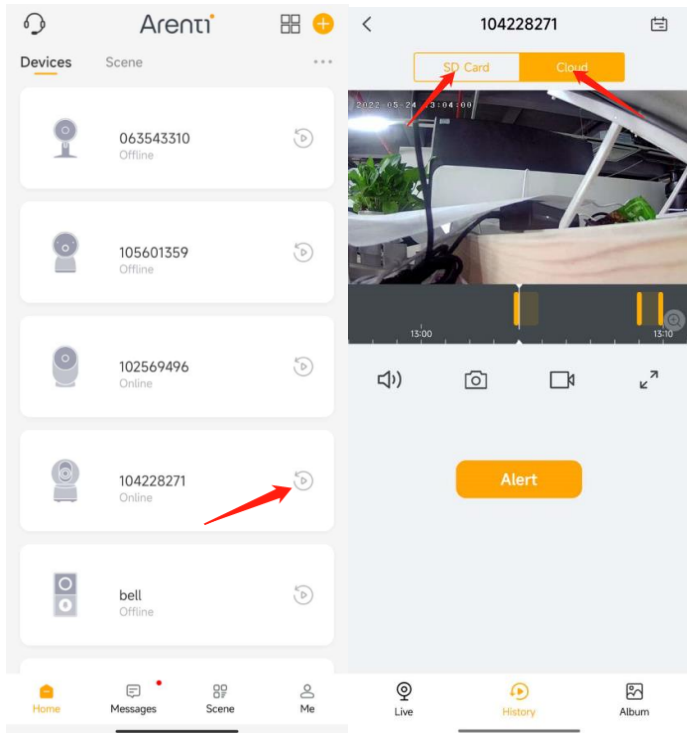
Stop Uploading



You can disable the Upload icon, to stop the camera uploading the video to cloud storage service. There will be no recordings on cloud storage.

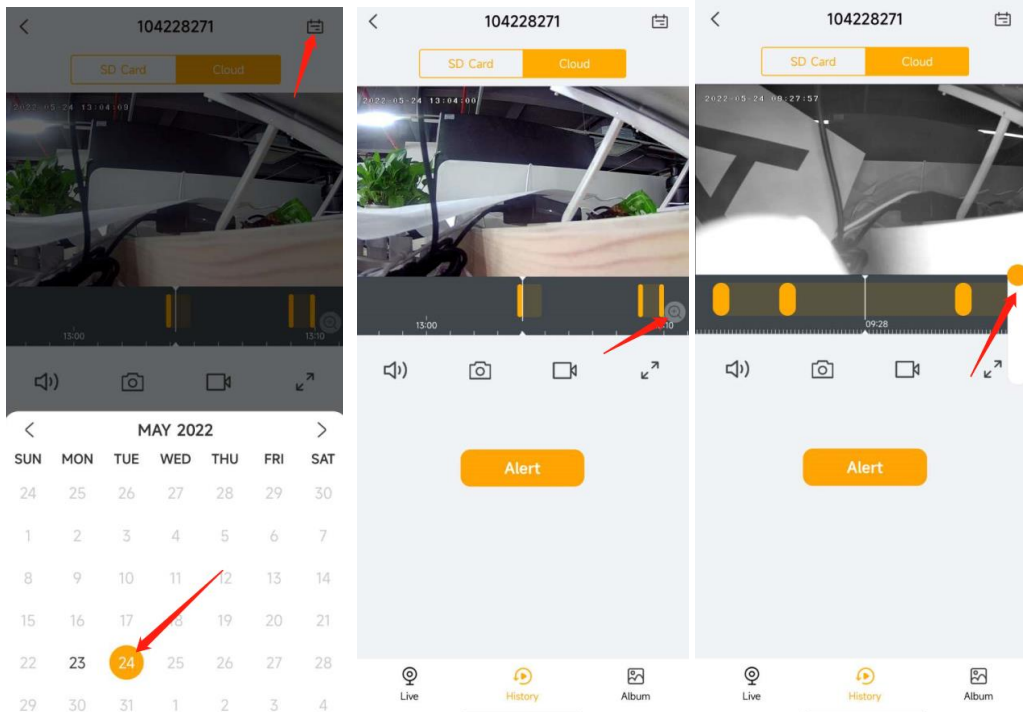


Playback

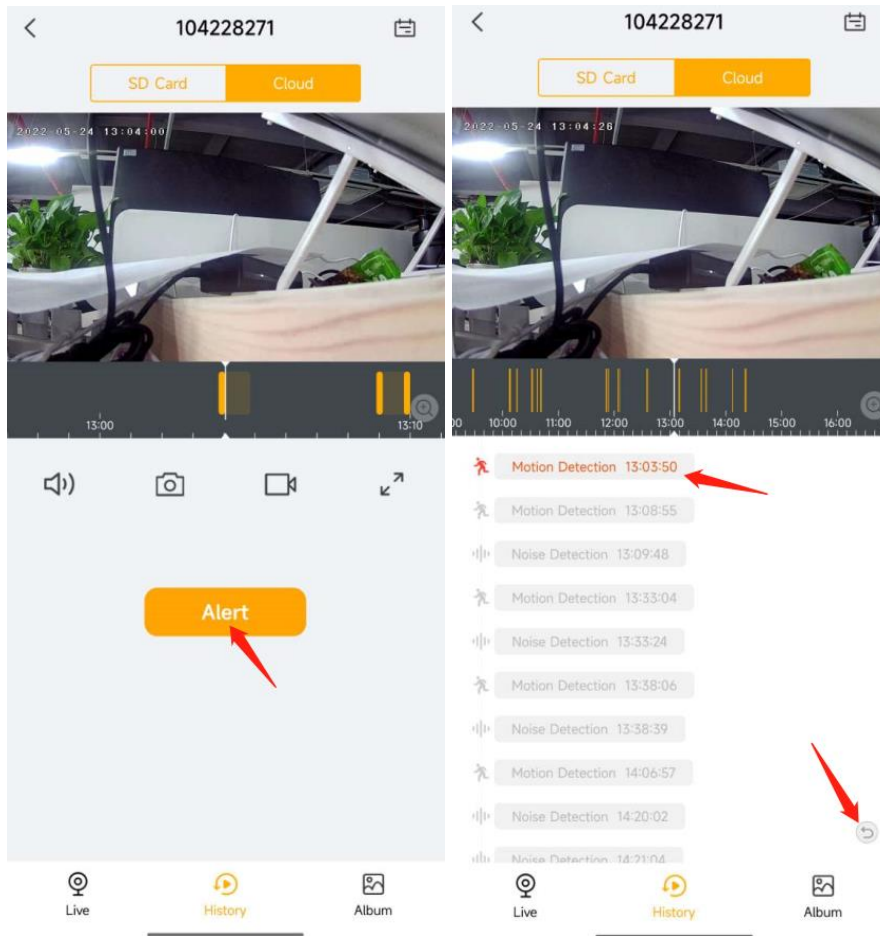
1. Tap the  icon to check the history video. According your own plan choose SD card or Cloud to playback.




2. Tap  icon to select a date to search the recordings. Tap the  icon to scale timeline and slide to find the recordings you want to replay, waiting for loading and it'll automatically start to play.

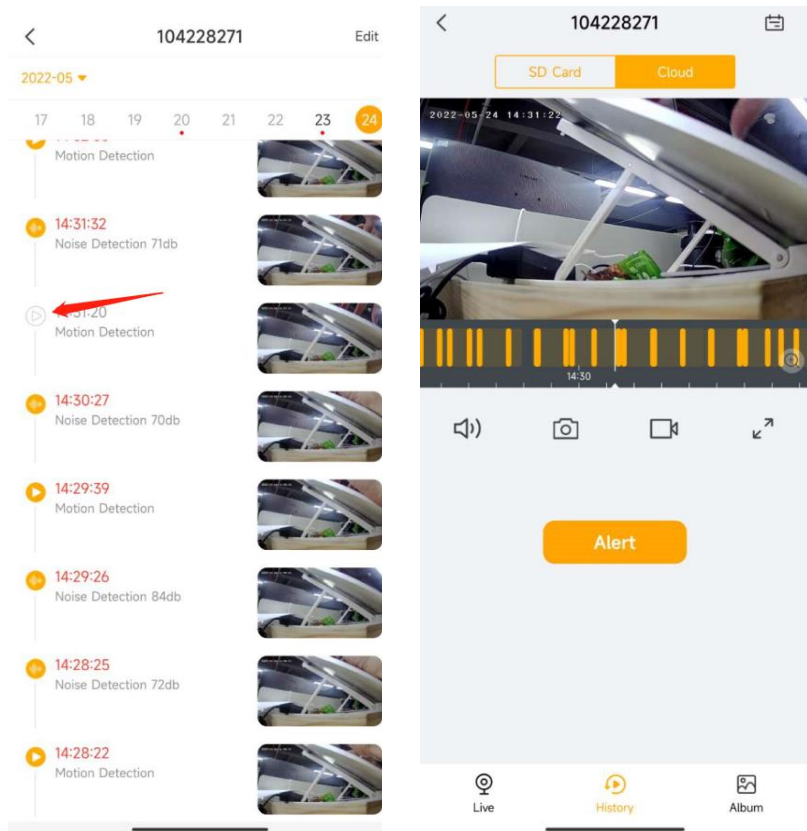


3. Tap 'Alert' to search and play alarm recordings.



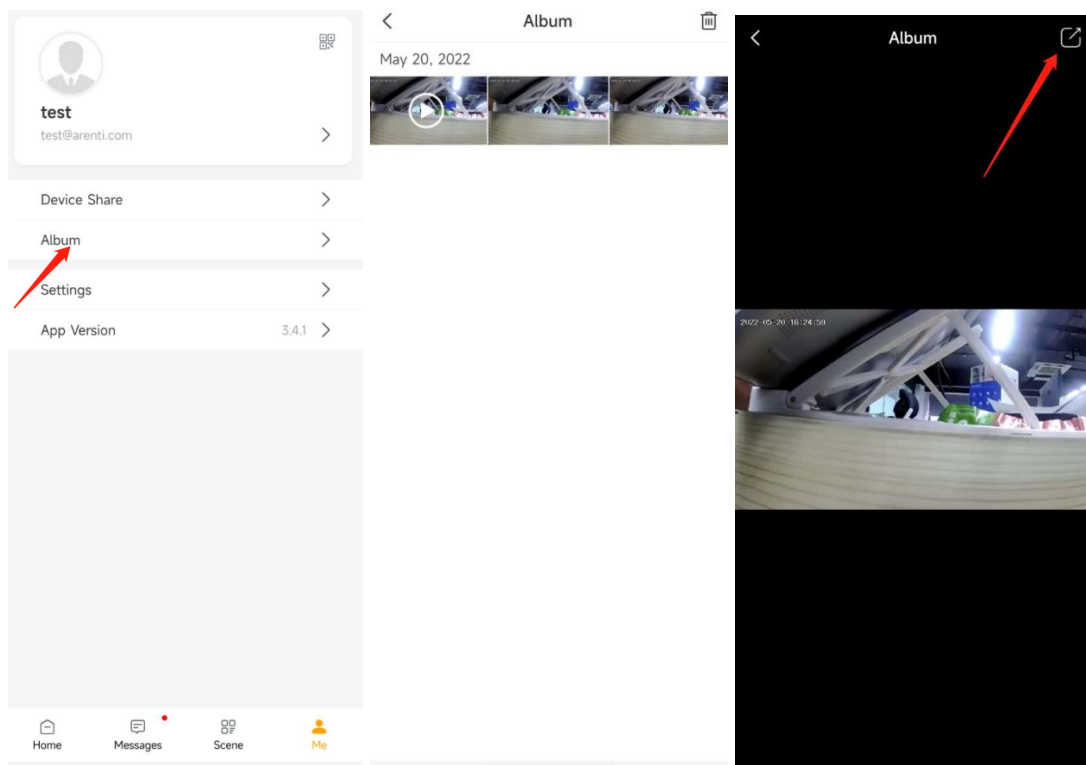
4. Playback from the Alarm messages.

Go to Messages-Alarm messages-Device, choose the messages, tap  icon to play the recording.



Album

You can browser all picture/video that captured manually in album. Also you can share the video/picture in album.

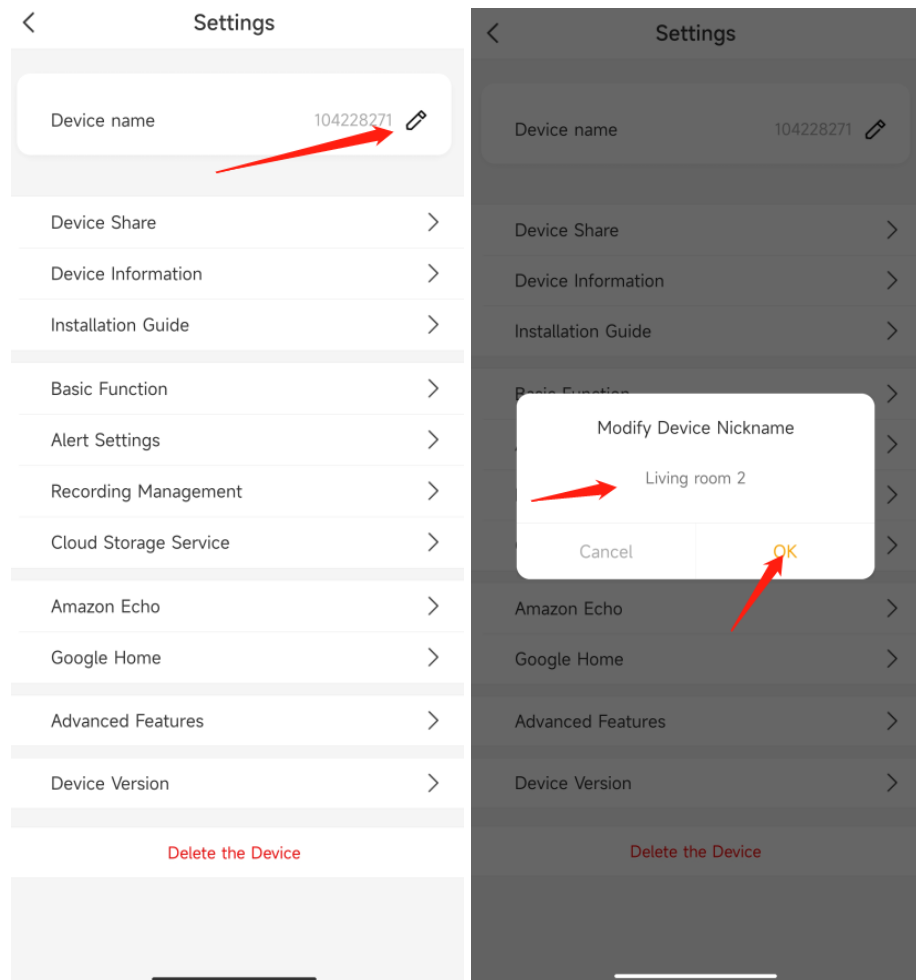


6. Camera settings

Camera Name

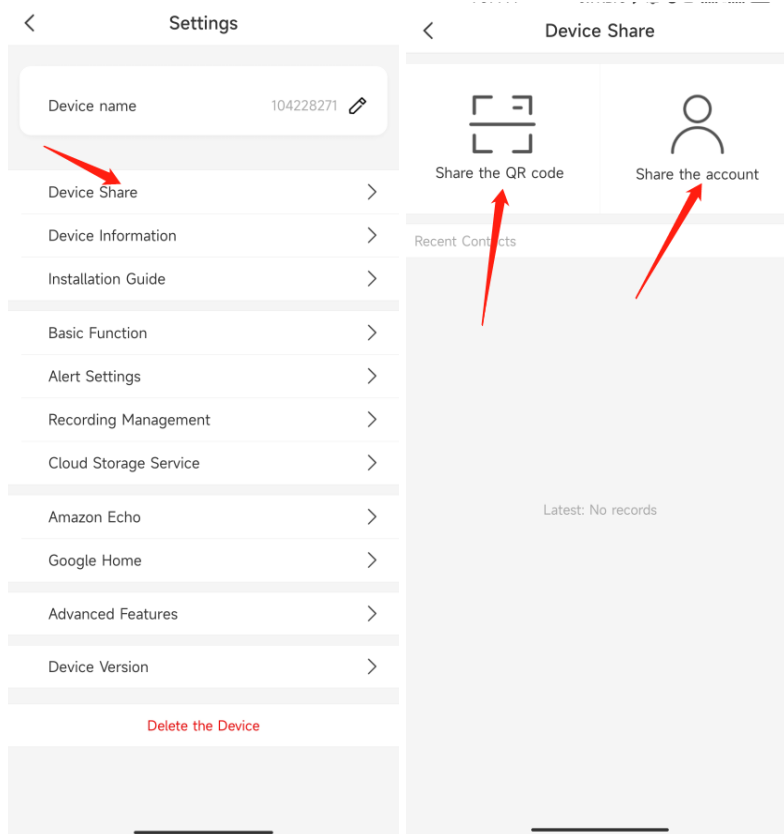
You can rename the camera

Arenti APP-Device(Tap device to live video page)-Settings-Device name,after you input the new name,tap OK to save.

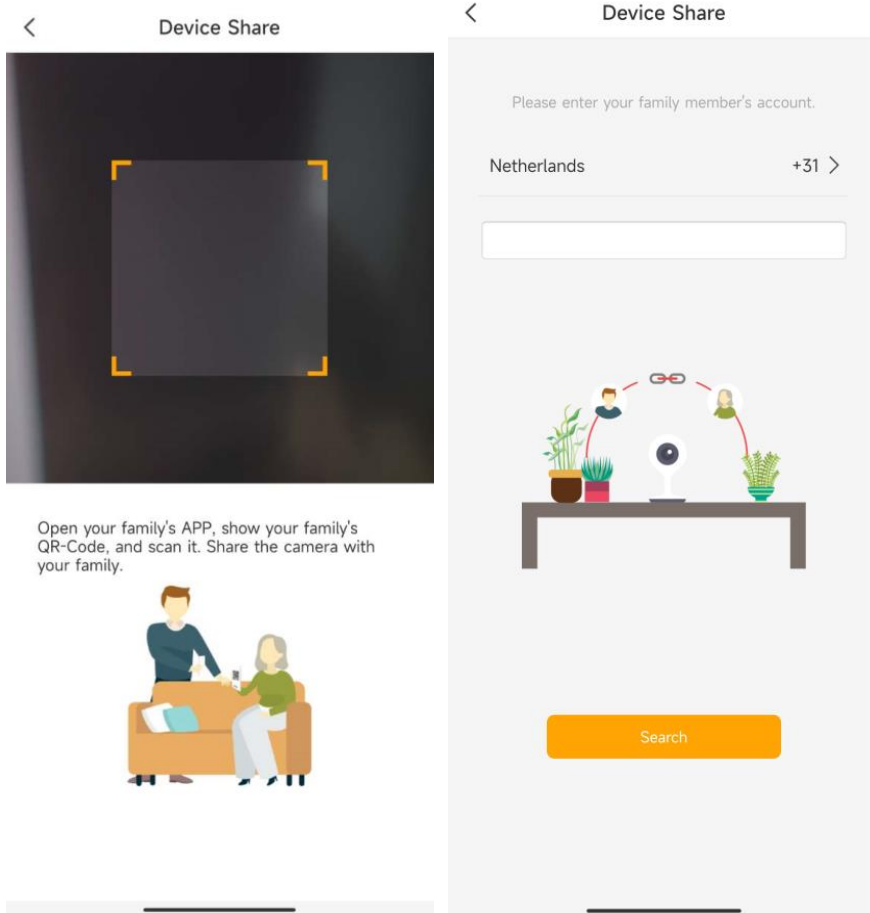


Share Arenti Devices with others

1. Arenti APP-Device (Tap device to live video page)-Settings-Device Share-Add-Share the Qrcode



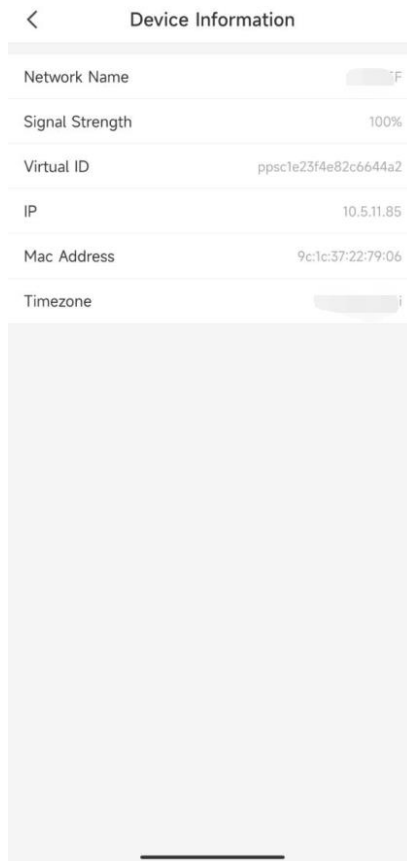
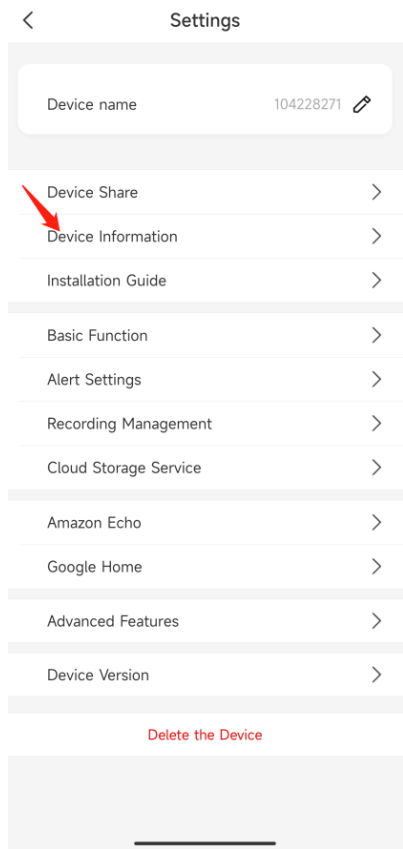
2. Launch the Arenti APP in another mobile phone and tap Me-Qrcode. Scan the Qrcode to share the device.
Also you can manually input the user account to share the device. And accept the shared device on another mobile phone.



Note: needs your friends create the account (same country) and login the Arenti APP also. Your friends account could access the Live video, recordings in SD card(not allowed via cloud storage)

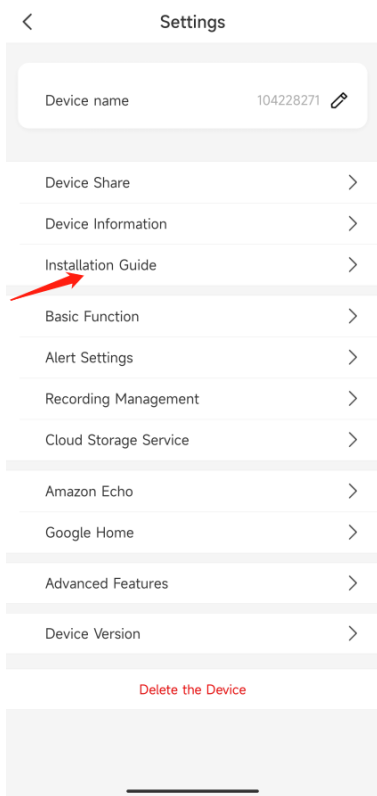
Device information

You can check the camera information from: Arenti APP-Device (Tap device to live video page)-Settings-Device information: Network Name, Signal Strength, Virtual ID,IP, Mac Address, Time zone.



Installation Guide

Check from: Arenti APP-Device (Tap device to live video page)-Settings-Device information
APP will guide you to install the camera in a good wifi position, to keep camera working properly.

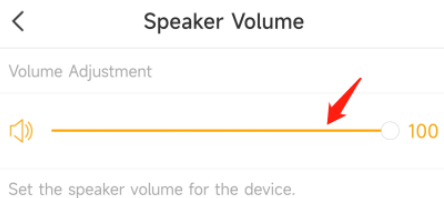
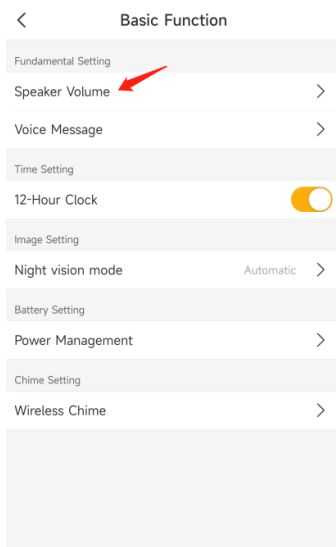


Basic function

Speaker volume


Basic function>Speaker volume

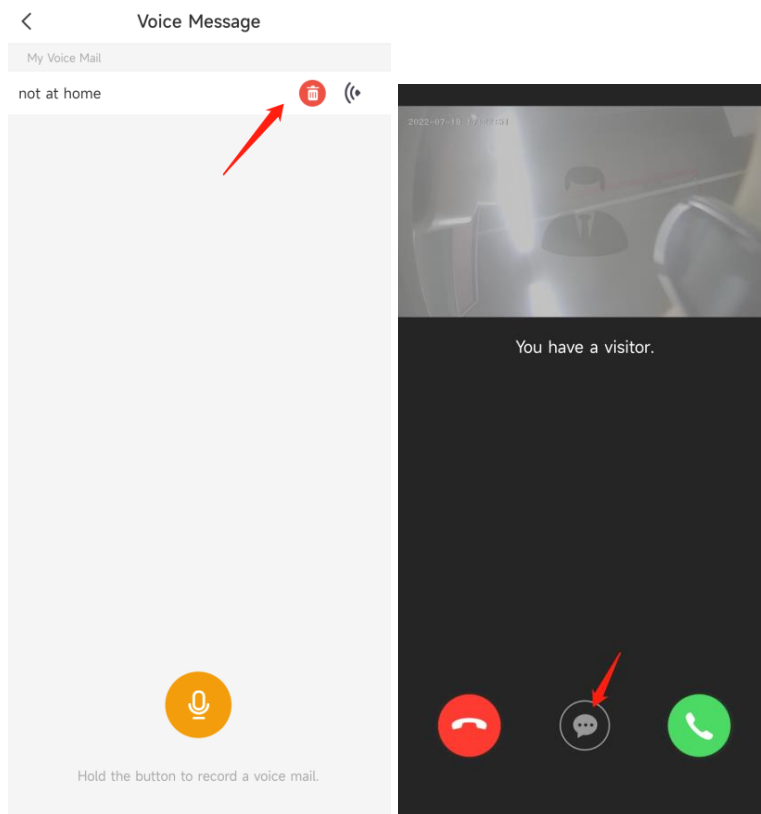
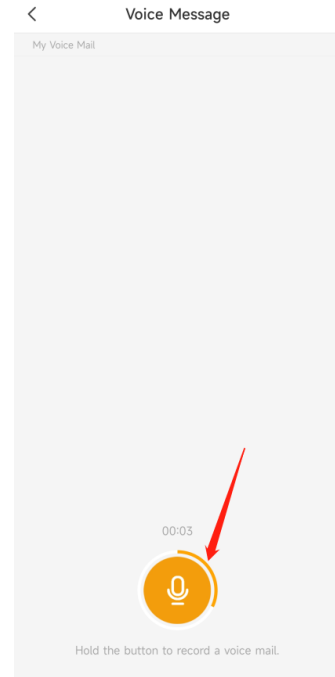
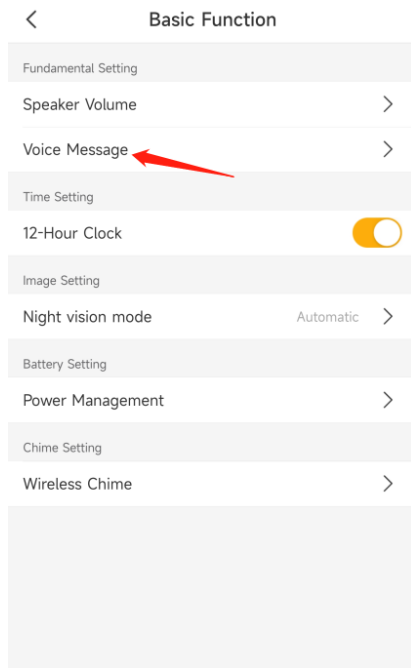
Support user adjust camera speaker volume



Voice Message

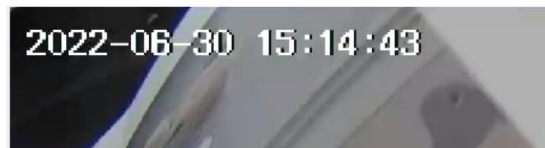
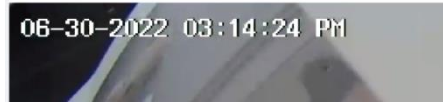
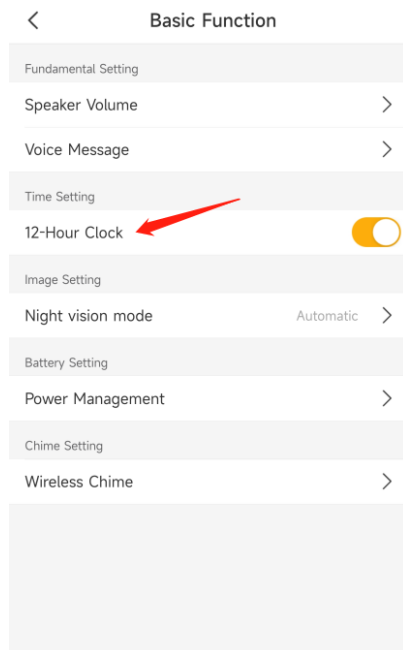
Record a Voice message when you are not convenience to answer the ring call.

You can tap the  message icon when you are in pick up page. Doorbell will play the voice message that you recorded before.



Time setting

Support to change the time format switch to 12h/24h



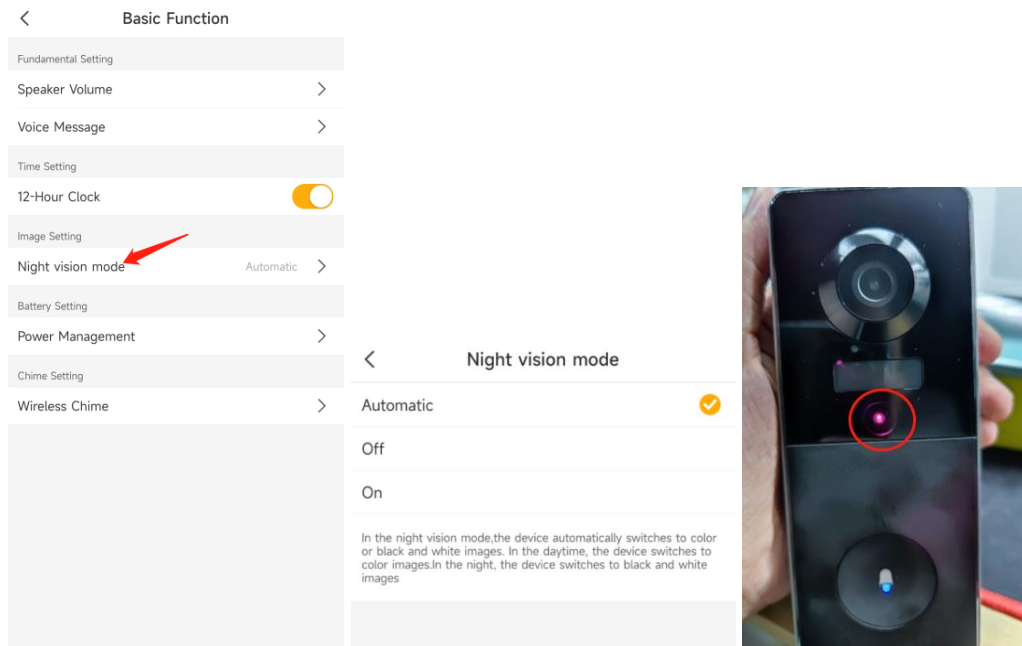
Night Vision

Set the camera's color mode during different times of the day and night. When night vision is on, the infrared light will turn on also--to get clear Black&White image in the night.

Automatic: The camera will automatically switch between Color and Black & White modes according to the light conditions.

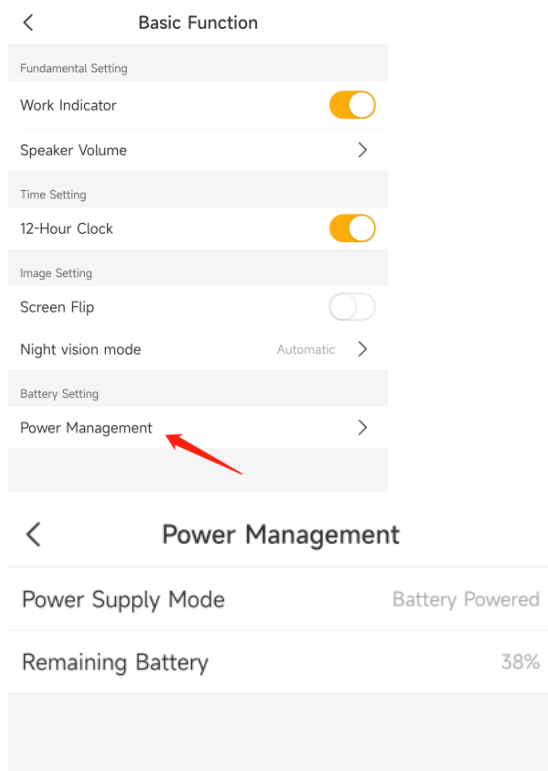
OFF: The camera will capture color images that usually appear during the day.

On: The camera will capture black-and-white images that usually appear during the night with the IR LEDs on.



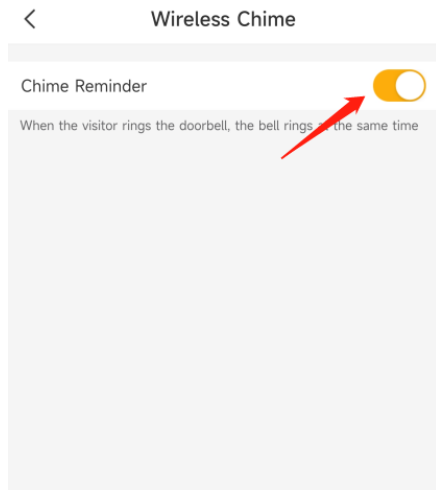
Power Management

Check the camera Power Supply Mode/Remaining Battery (%) from Power Management.



Wireless Chime

Support to choose whether let the Chime rings.



Amazon Echo Show & Google Home

Tap Amazon Echo/Google home to learn how to bind camera.

After bind, you can check the camera Live video on Amazon Device and Google Home device.

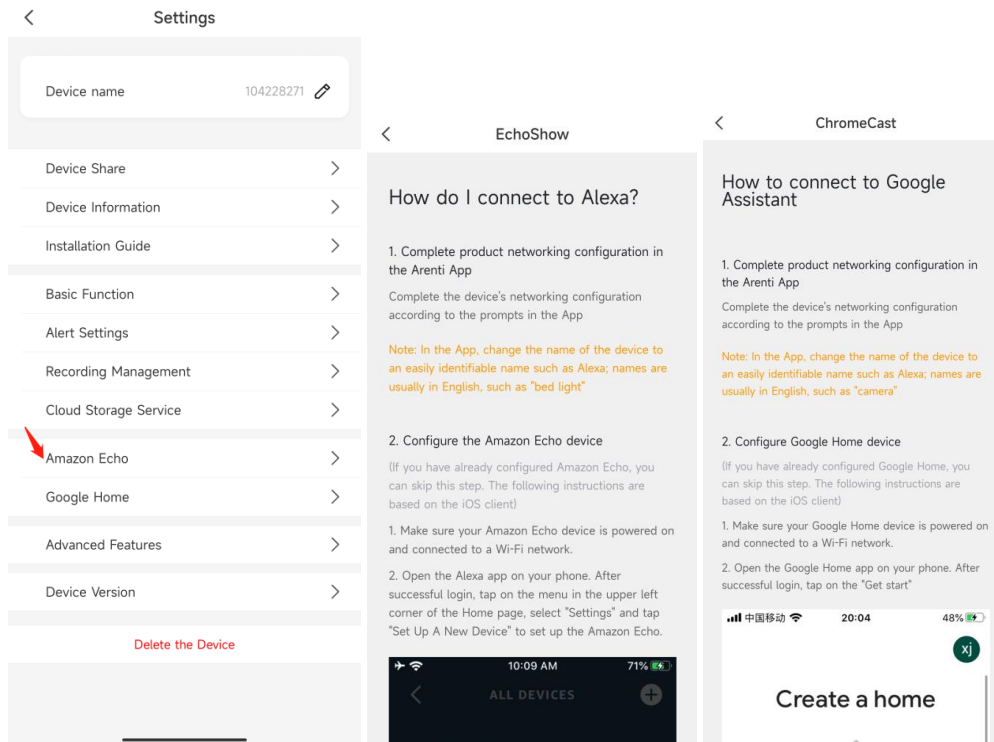
Note:

1. User name is the account name (email address/phone number) in Arenti APP and it is case sensitive. Need use lower case.
2. Please do not use the auto-filling, input the information manually.
3. Please select the country
4. If login failed, please re-start the Alexa APP and enable the skill again.

Instructions:

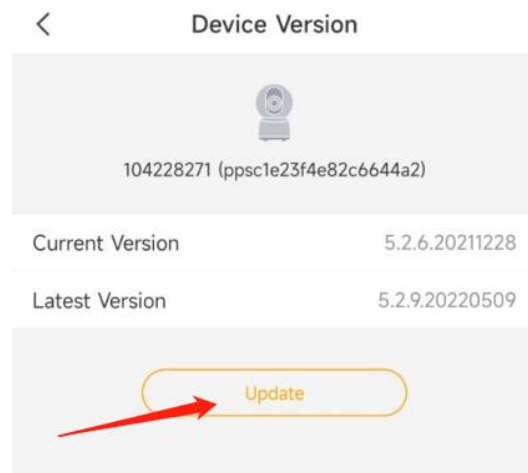
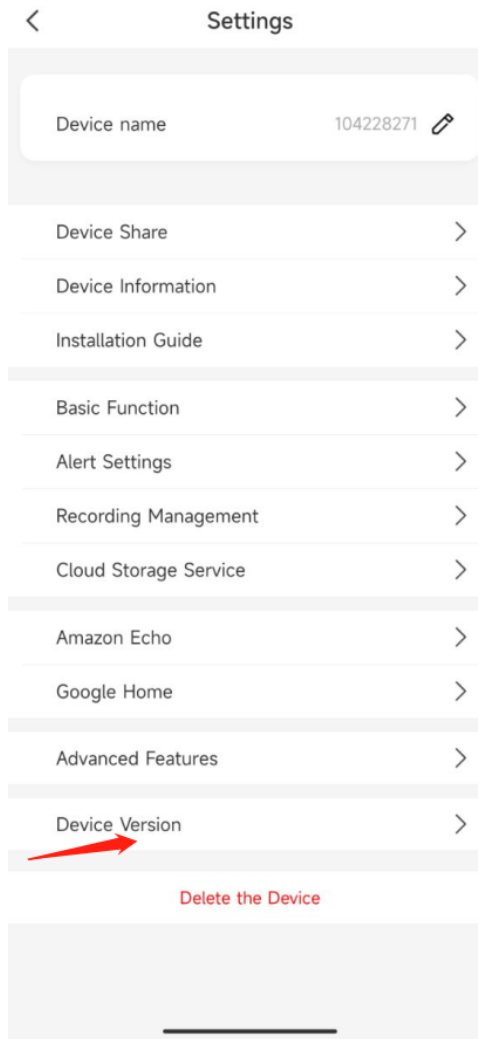
Amazon Echo: <https://www.youtube.com/watch?v=fUzPfG7zlm4>

Google Home: <https://www.youtube.com/watch?v=2Bt3xlAGsh4>



Device version

You can check the camera firmware whether need to be upgraded.

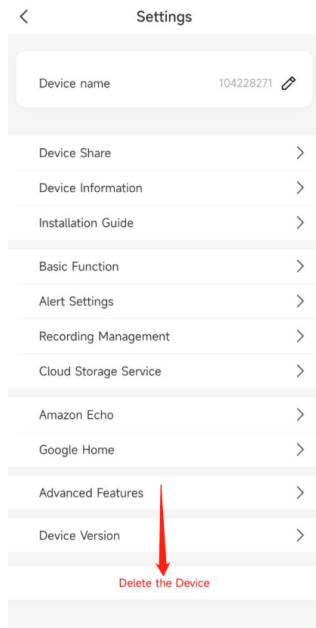


If have new firmware to be upgraded, you can tap 'upgrade' to upgrade the camera firmware.

Note: Whole upgrading process may take 5min, Please do not power off the camera when upgrading, camera will download the firmware from server and upgrade the firmware. Suggest keep camera near the wifi router for the better network to download.

Delete the Device

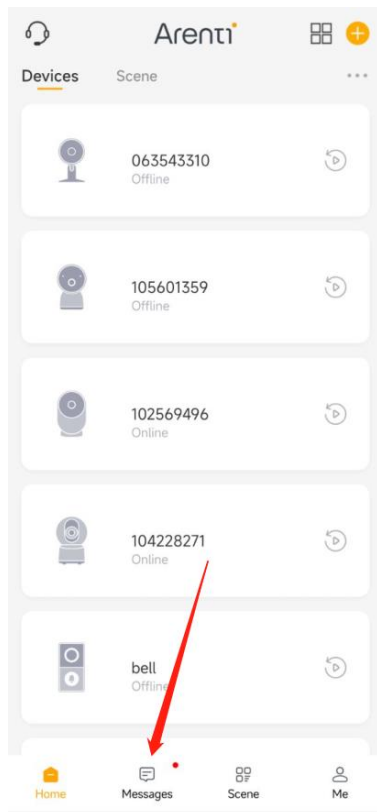
Tap to delete the device from you account.



7. Use Arenti APP

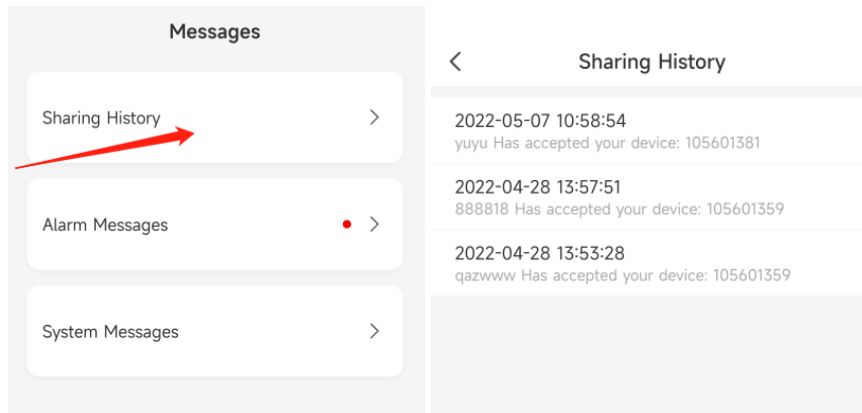
Messages

Tap the Messages at the bottom.



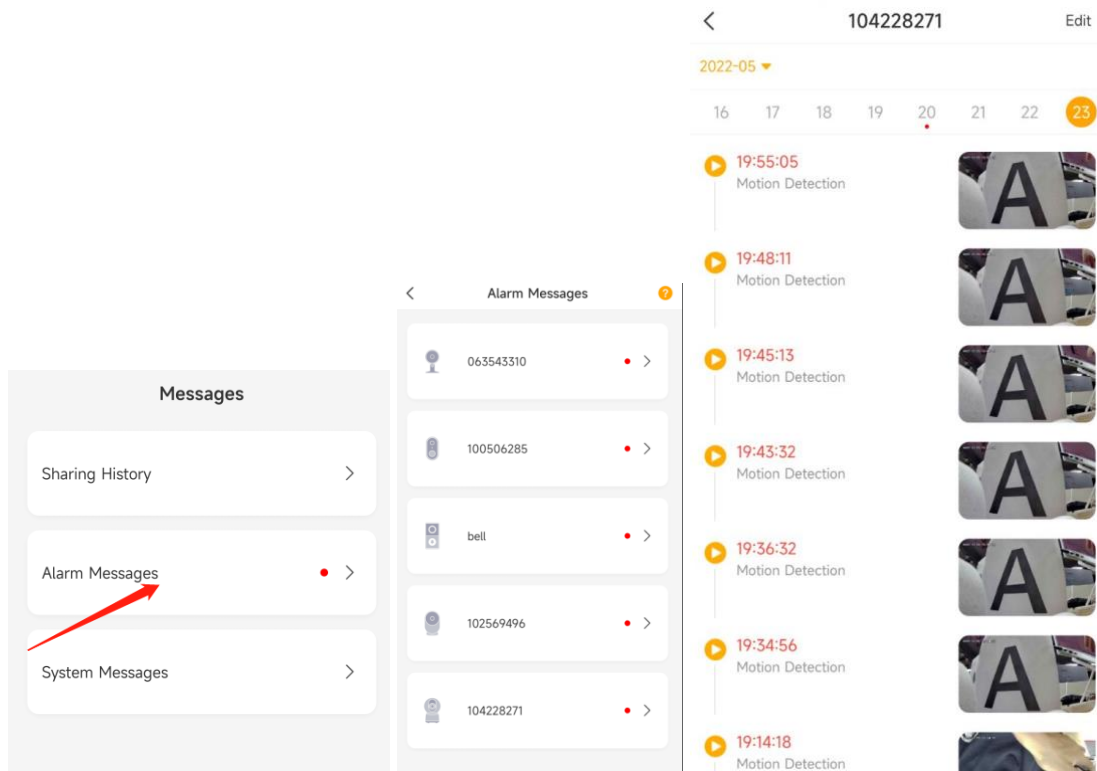
Sharing History

Tap Sharing History to check the sharing messages



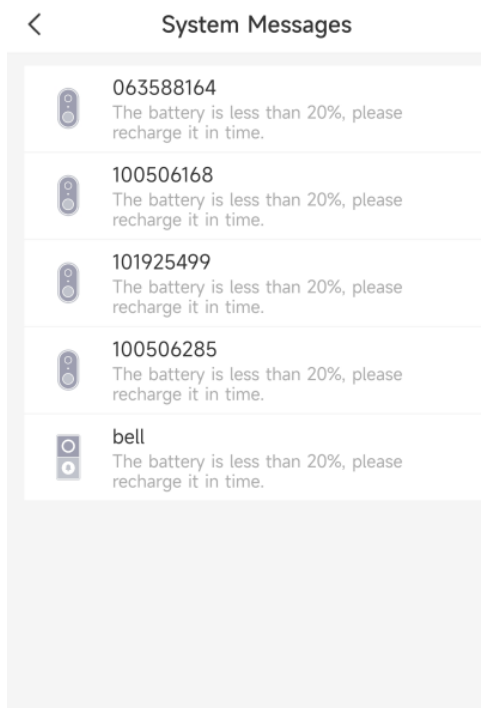
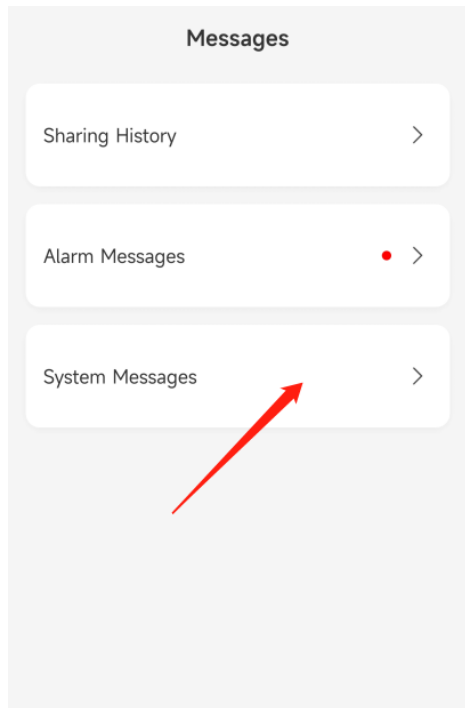
Alarm Message

Tap Alarm Messages-Device-check the Alarm message sent from camera



System Messages

Tap System Messages to check the battery low messages.



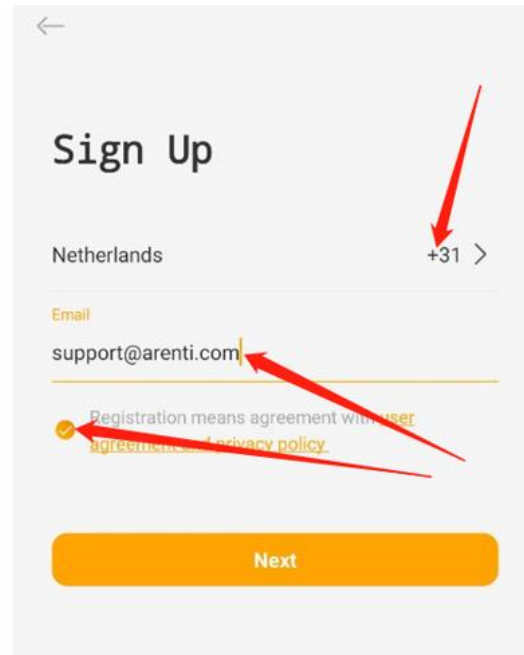
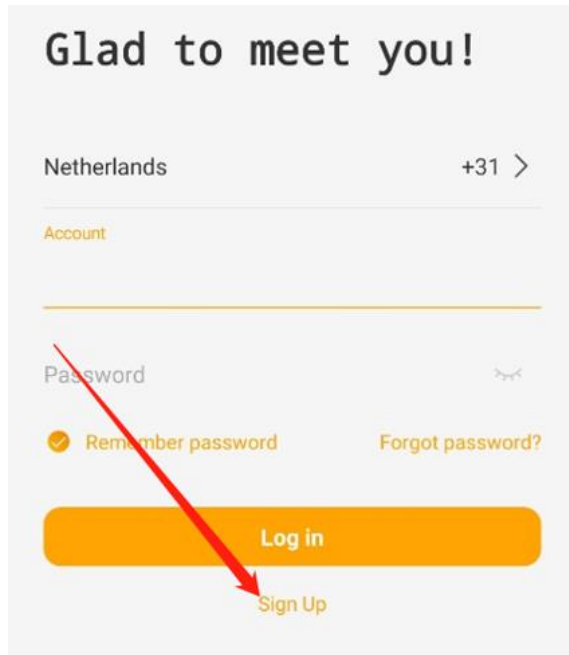
Scene

No device support now. Coming soon.

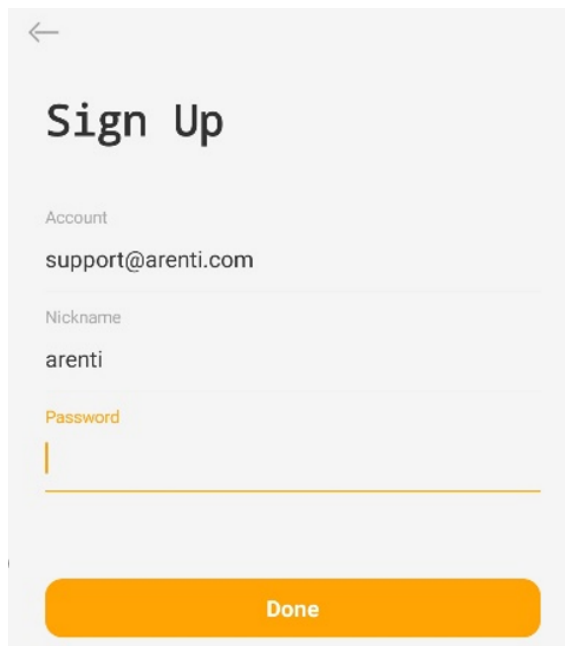
Account

Register (Sign up)

1. Open the Arenti App, click "Sign Up, Choose the country and input email address; enable the "User agreement and Privacy Policy" ,tap 'Next

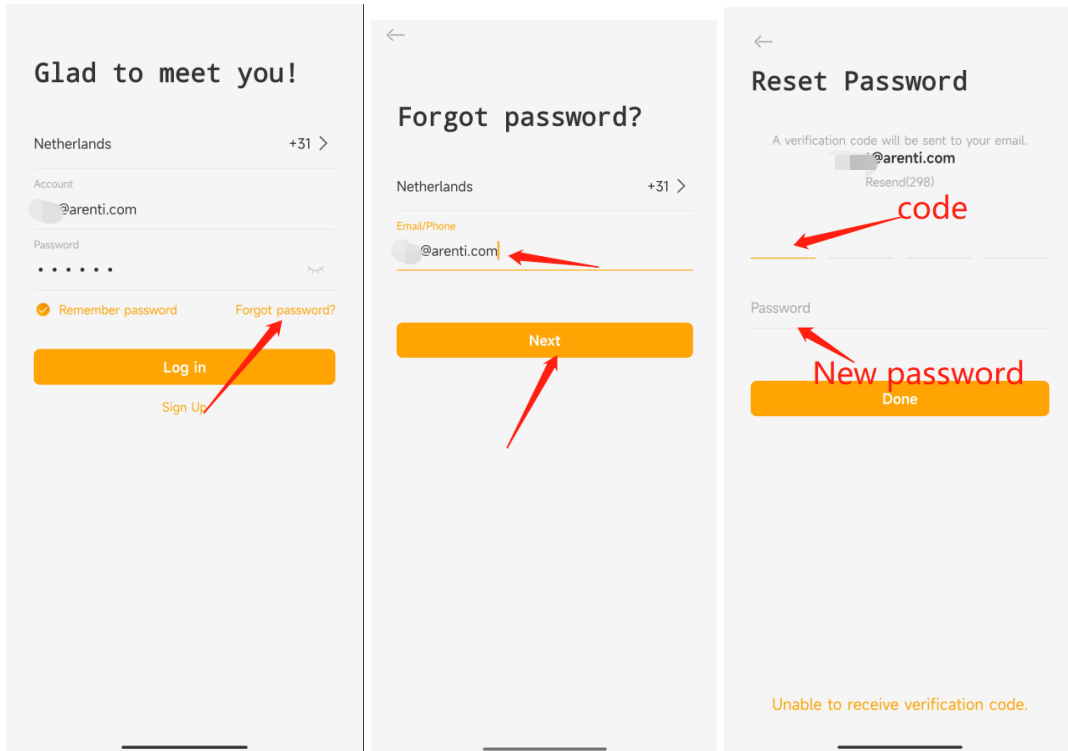


2. Set the Nickname and Password, tap 'Done'.



Reset Password

1. Tap the 'Forget password'
2. Input the correct Email address/Phone number, tap 'Next'
3. Input the verification code you received, and input the new password you want to set.
Done

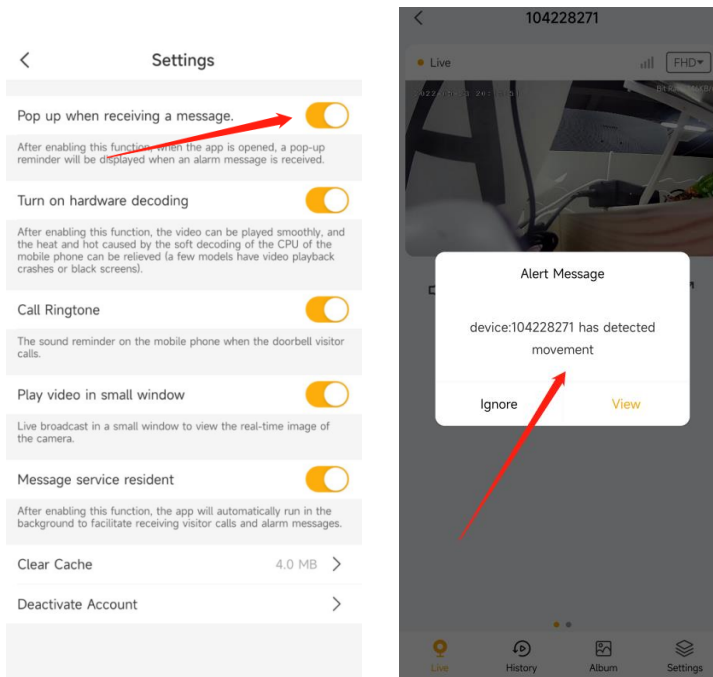


APP Settings

Launch APP tap Me-Settings:You can adjust the APP settings.

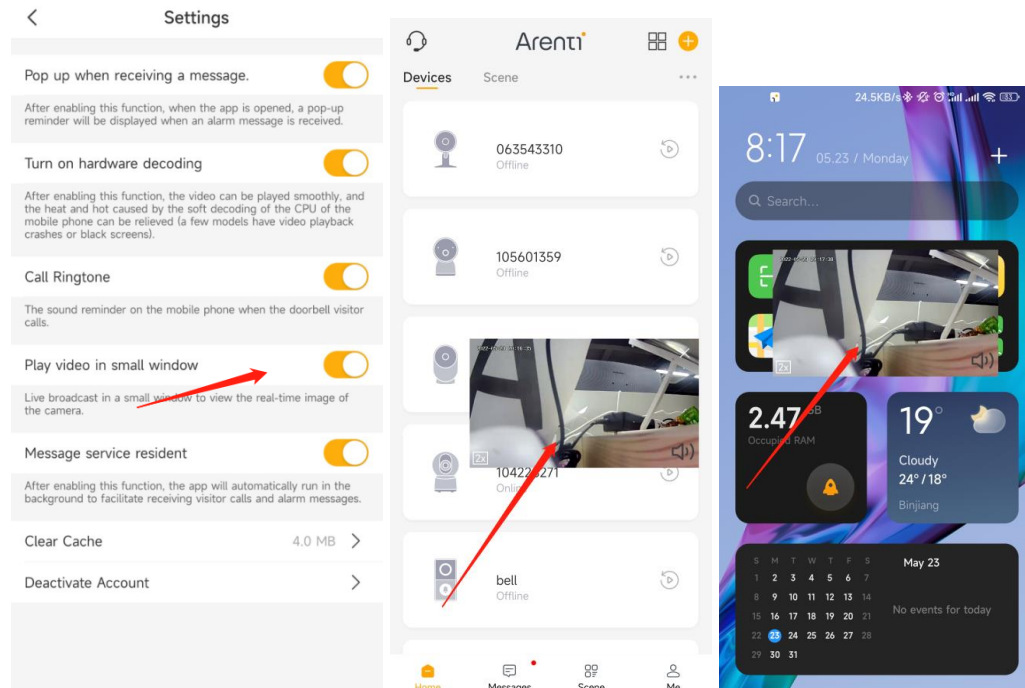
1. Pop up when receiving a message

After enable and APP is opened, a pop-up page will be displayed when an alarm message is received.



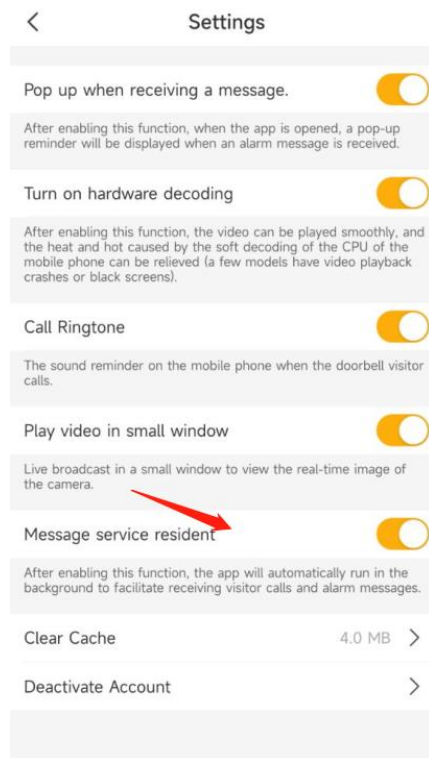
2. Turn on Hardware decoding
3. Call Ringtone
4. Play video in small window.

The window will possible always top, when you using other APP on mobile phone. You can keep watch the camera Live video.



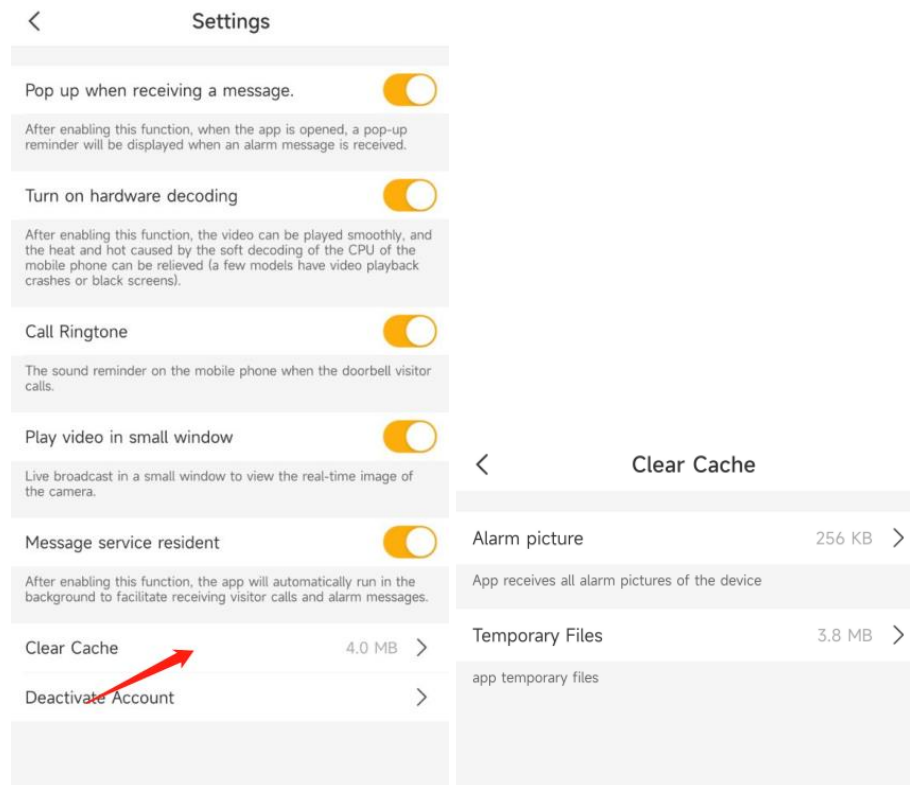
5. Message Service resident

Enable the 'Message Service resident', APP will run in the background to facilitate receiving visitor calls and Alarm messages.



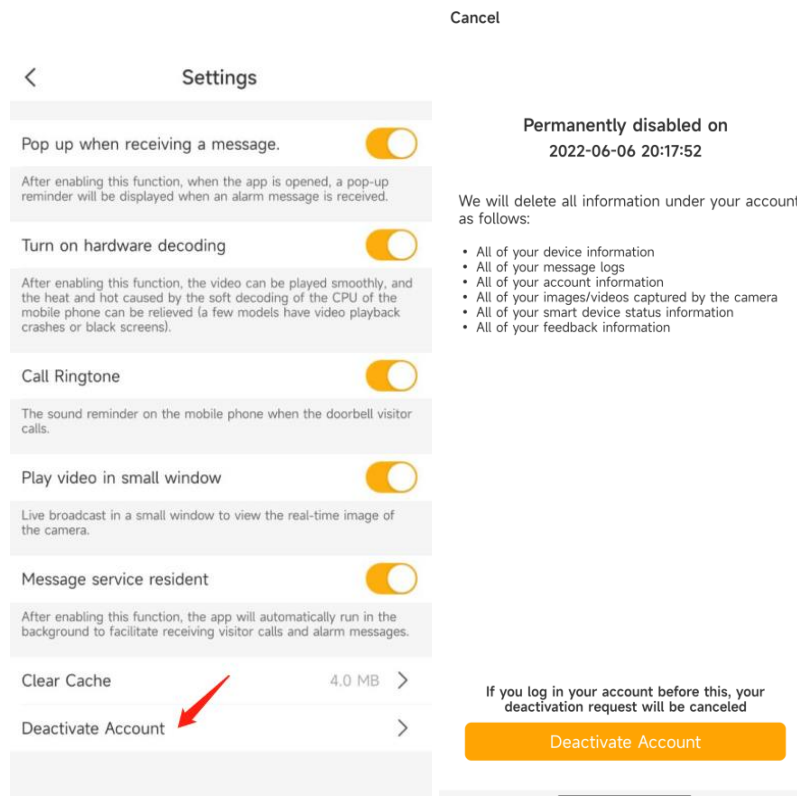
6. Clear Cache

Tap 'Clear Cache' - delete Alarm pictures/Temporary Files



7. Deactivate Account

Tap to Deactivate Account



8. FAQ and Troubleshooting

FAQS

1. How to switch/change WiFi, update wifi password for device?

1. Delete the devices in your account in Arenti APP device list.(All recordings/subscription will be there, until you add it again)
2. Open APP click 'Add', and follow the steps use the new WIFI network to add the camera again.—Scan the qrcode when indicator is red flashing slowly.

2. What to do if I can't receive alert push notification?

1. Please ensure the Motion Detection: Arenti APP-Device(Tap device to live video page)-Settings-Alert settings, and Receive Alert Notification is enabled: Arenti APP-Device(Tap device to live video page)-Settings.
2. Please ensure the Message service resident (Arenti APP-Me-Settings) is enabled. The APP will Automatically run in the background to facilitate receiving visitor calls and alarm messages.
3. Please ensure notification for Arenti app has been enabled in phone setting. enter the phone system settings-notifications-find "Arenti" and enable notification permissions.
4. If you are using Android mobile phone, if you kill the APP, it will stop to receive the notification. Please confirm the APP is running there

3. Whether support viewing the SD card video via the computer?

Yes, It is supported.

1. Using the Micro SD card reader. Let the computer read the SD card.
2. You will find the video file in the SD card. It is an MP4 file, you could open and view the video on the computer directly.

4. How to delete /erase the video record in Micro-SD Card and Cloud storage?

SD card record: need you format the SD card and delete all recordings:APP-Device(tap to live video page)-Settings-Recording Management-Format SD card. Also you can use the SD card reader to connect the Micro-SD card with your computer, choose the file and delete it.

Cloud video record: it will be overwriting/deleted automatically after 3/7/30days depends on which service you subscribed. We have 3/7/30days looping cloud storage service.

5. Why the night vision image has a big reflection on window/glass?

When night vision is on, the infrared light will turn on also--to get clear image in the night. It will be very clear in the open area. If faced the glass, the infrared light will reflect off the glass, making bad image in night. If want to face the glass in the night, suggest turn off Night vision.

Troubleshooting

1. **Recognized the QR code successfully, but device fails to setup, and camera indicator shows red fast flashing:**

Your steps are all correct, maybe has some compatible issue with the wifi router.

1. Please try to confirm: wifi is 2.4GHz, not WPA3 security mode., password is correct, not contain special characters such as \';

2. Please put your device next to the router when set up. If this still does not work, please reboot your router (unplug for 10 minutes and plug in again) and reset your device to try again. Also, you can try to use another mobile/laptop as a hotspot to set up your device to test if it works with hotspot Wi-Fi. If it does not work with the hotspot, please connect us.

2. **Why my camera always offline/ lose connection?**

Network problems may cause the camera off-line. Solution:

- a) Check whether the power of the camera is sufficient.
- b) It is recommended that the wifi signal strength to be above 75%. Check from APP-Device (tap device to live video page)-Settings-Device information
- c) Restart the camera and router.
- d) Place the camera next to the router and observe whether the video is smooth. If the camera is still offline, it may be due to the camera hardware failure, please contact customer service

3. **My camera not working, after powering on/plug in ,there is no indicator light on.**

Please try to use the other adapter/cable and check again, if keep no light on, please send the camera SN and order number to support@arenti.com

4. **Why does the video always with the circle/buffering?**

The circle means that the video is loading, and the buffer and delay means that the network is not smooth. Please check whether the network connected between the camera and the mobile phone is smooth. It is recommended to place the camera close to the WIFI router.

5. **I already inserted the Micro SD Card Why APP keep shows "No SD card"?**

It means that the SD card identification fails or broken. Suggestions:

- a) Please use a brand SD card, high speed(Class 10 and above).
- b) The SD card can be identified by the computer normally.
- c) Only FAT32 format is supported. capacity between 2G-128G.
- d) It is recommended to try another SD card.

It may take some time for the camera to identify the SD card. After inserting the card, wait for about 30S and then observe.

6. **I got the alarm notifications, tap to check the video but failed to play.**

Please check it few mins later. Because the video may still in uploading to the cloud storage/Saving to SD card.