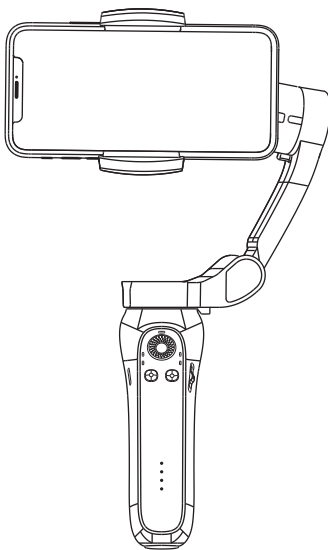




3 AXIS FOLDABLE GIMBAL DSG-007F



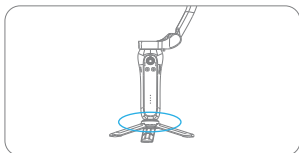
User Manual

CONTENTS

Quick start, install the smart phone	2
Power on	3
Connect to the bluetooth when using native camera	3
Instructions for 4 modes	4
Get to know the gimbal	6
Others	8
Charging	9
Power off	10
About APP	10
Specification	12
Caution	13
Storage and maintenance	13

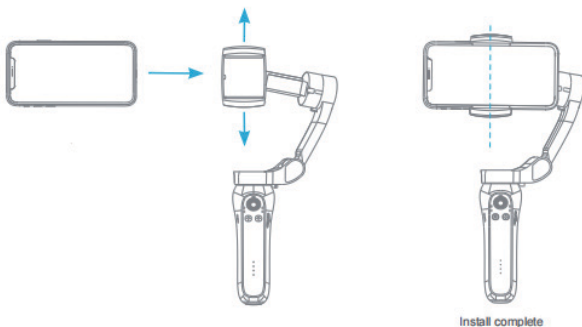
Quick start, install the smart phone

1. Install the tripod to gimbal



2. Remove the phone case before installation, keep the phone screen horizontal and the phone camera facing left.

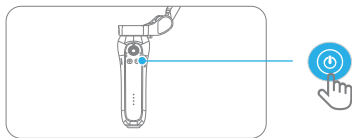
Pull the smart phone holder and put the phone into it, make sure the smart phone holder is in the middle of the smart phone.



* This Product supports power on without smartphone, and allows to remove the phone while using, such as when taking a phone call

Power On

Press the power button for one second to power on

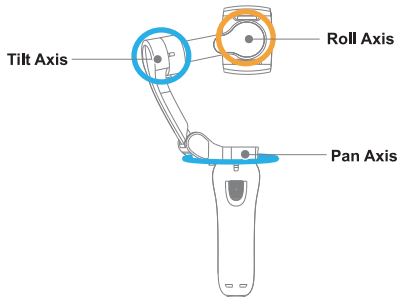


Connect to the bluetooth when using native camera

Power on the gimbal, open the bluetooth on the phone, go into smartphone bluetooth setting page, choose the device name “**GP7-XX**”to connect.

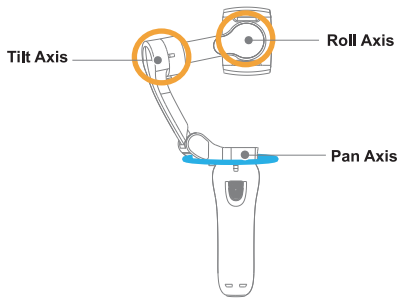
Instructions for 4 modes

All Follow(AF): The Roll axis is locked, the pan (left/right) and tilt(up/down) will follow the movement of handle.

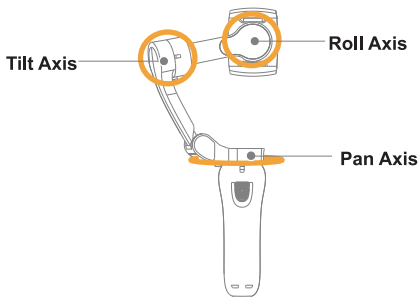


Half Follow (HF) : Tilt & Roll are locked, Pan Axis rotates (left/right) Smoothly with the handle.

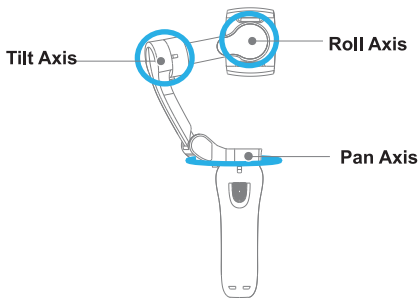
* default, mode upon powering no



Lock Full (LE) : Pan, Tilt, Roll axis are all locked, The camera remains still and stable, which means the camera cannot follow the movement of the handle.



First person view (FPV): Pan, Tilt, Toll Axis follow the movement of the handle



Get to know the gimbal

FPV-First person view

Gimbal Pan, Tilt Roll
Axis follow the
movement of the handle

LE-Lock Full

Smartphone is fixed
in one direction

Charging Port

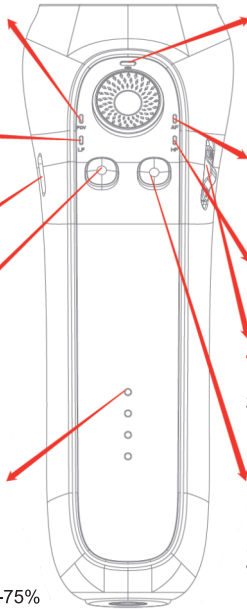
Charge for gimbal

Mode Button

Single press—
switch four modes
Double press
Smartphone
back to center

Power Level Indicator

Four lights are on—100%
Three lights are on
and the fourth light
flashes —76%-99%
Three lights are on --50%-75%
Two lights are on—26%-49%
One light is on—0%-25%



Bluetooth Indicator

Slow Flashing-Bluetooth
is not connected Fast
Flashing-Bluetooth is
Connecting Light is
on-Bluetooth is connected

AF-All Follow

Smartphone left/right and
up/down follow the
movement of the handle

HF-Half Follow

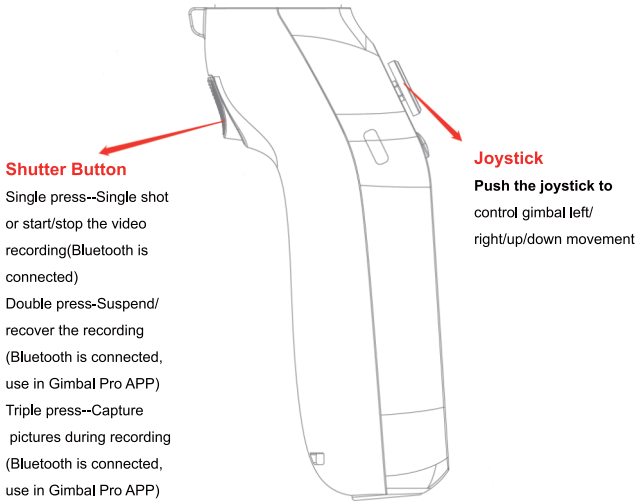
Smartphone left/right and
up/down follow the
movement of the handle

Zoom

Push the slider up/down to
zoom in and out (Bluetooth
is connected, use in gimbal
pro APP)

Power Button

Single Press—switch horizontal
& Vertical mode/restart gimbal
when gimbal is stuck
press on second – power on/off
double press—switch photo/
video mode(Bluetooth is
connected, use in gimbal Pro
APP) Triple Press—switch camera
between front/rear (bluetooth
is connected, use in gimbal
Pro APP)



Shutter Button

Single press--Single shot or start/stop the video recording(Bluetooth is connected)

Double press--Suspend/ recover the recording (Bluetooth is connected, use in Gimbal Pro APP)

Triple press--Capture pictures during recording (Bluetooth is connected, use in Gimbal Pro APP)

Joystick

Push the joystick to control gimbal left/ right/up/down movement

Others

Combine button

Press the shutter button and power button at the same time, reset the bluetooth name, to disconnect from previous phone, new phone can do quick connect

Work mode

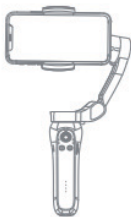
Works with both landscape and portrait modes

Underslung mode

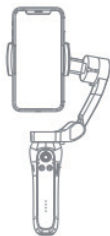
Hold the gimbal upside down to enter underslung mode, in order to capture images from low position

Side Grip mode

Rotate gimbal to the right or left by 90° to go from upright to side grip mode, works with both landscape and portrait modes



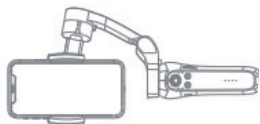
Work mode-landscape



Work mode-portrait



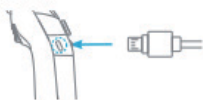
Underslung mode



Side grip mode

Charging

This Product support fast charging, suggest to use 5V/2A adapter to charge the gimbal



Charging

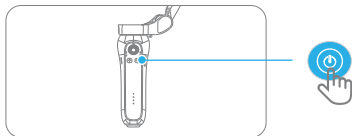


Charging completed

*** Support operating during charging**

Power Off

Press the power button for one(1) Second until the indicator light are off.



* Gimbal will return to folding position which will be convenient to quick fold it.

About App.

This product supports native camera, can do basic stable shooting without APP.

If you want to use more functions (such as zoom, panoramic, tracking and time lapse), need download and use the app

Download the Gimbal Pro APP.

search the QR code or Search “ Gimbal Pro” on the Google Play or APP Store

*** Gimbal Pro require iOS 12.0 System and later or Android 6.0 system and later.**



**Support iOS and
Android**

Connect to Gimbal Pro APP.

- 1. Go to Setting Page on Smartphone.**
- 2. Go to Bluetooth setting, find and click the device name “GP7-XX”).**

Product Specification

Tile Angle	: 160°
Roll Angel	: 325°
Pan Angle	: 340°
Net Weight	: 362g
Payload	: 280g
Working Temperature	: 0C°-40C°
Controllable Tile Angle	: +30°/-30°
Controllable Roll Angle	: +90°/-90°
Controllable Pan Angle	: +240°/-100°
Compatible Smartphone Range	: Diagonal : <180mm Width : 55-90mm Thickness <9.5mm
Working Voltage	: 3.4~4.2 (Standard 3.7V)
Gimbal Dimension	: Unfold : 260*130*88*mm Fold : 150*110*46.6mm
Working Currency	: 150~3000mA(Standard 1500mA)
Charging Time	: 80mins (Use 5V/2A adapter)
Working time	: 4.5-5H
Face Tracking	: Yes
App	: Yes
Input Voltage	: 5V
Input Voltag	: 2A
iOS System request	: Support 10.0 & above
Android system request	: Support 6.0 & above

Caution

1. Ensure the motor rotation is not blocked by external force during and after the stabilizer is powered on;
2. Please do not contact with sea water or corrosive liquid;
3. Please do not disassemble the stabilizer (except for the detachable accessories in the manual);
4. If the motor works continuously for a long time, the surface temperature of the motor may be too high.
5. It is strictly forbidden to drop or collide with the stabilizer, which may damage it and cause abnormal operation;

Storage and maintenance

1. Please keep this product away from children and pets;
2. It is forbidden to put the product near the heat source (furnace or heater, etc.) and in the car at hot weather;
3. Please store the product in a dry environment;
4. Do not overcharge or discharge the battery, otherwise the battery cell will be damaged;
5. Do not use the product in the environment with too high or too low temperature;

For any query please contact :

IMS Mercantiles Pvt. Ltd.

#704, Ring Road Mall, Outer Ring Road, Near Deepali Chowk,
Sector-3, Rohini, Delhi - 110085 Tel. : 1800-123-544-444

Email : support@digitek.net.in Website :www.digitek.net.in