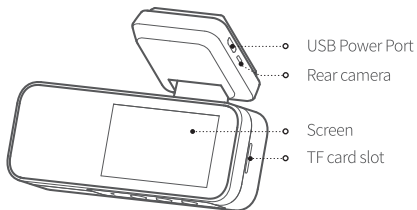
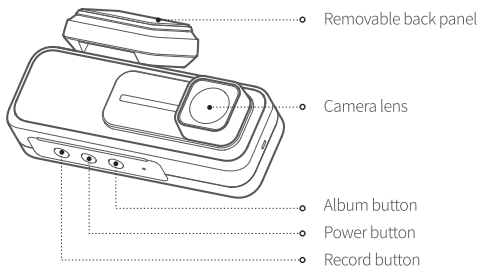


# Botslab Dash Cam G980H

## User Manual

## Product appearance



# Packing List

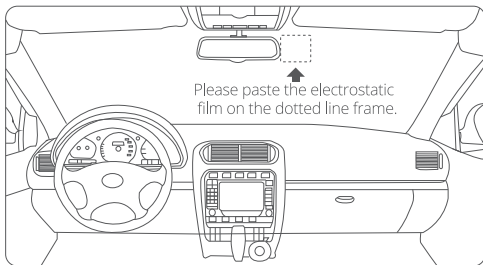
Upon opening the package, please check if the dash cam is in good condition and if all accessories are included.

- |                             |                      |
|-----------------------------|----------------------|
| 1) Main unit x 1            | 2) USB power cord x1 |
| 3) Electrostatic film x 2   | 4) User manual x1    |
| 5) Installation pry bar x 1 | 6) Car charger x1    |
| 7) Rear camera x 1          | 8) TF card x1        |

## Installation

### 1) Install the electrostatic film:

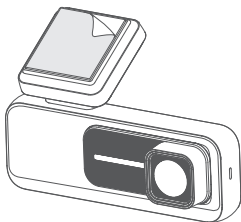
Install the electrostatic film on the front windshield in the recommended area (dashed area) shown in the diagram below. Before installation, please clean the glass and ensure there are no bubbles between the electrostatic film and the glass.



Tip: Please install the dash cam as close to the middle area above the front windshield as possible, in order to ensure full coverage of the car's front view and improve ADAS-assisted driving accuracy.

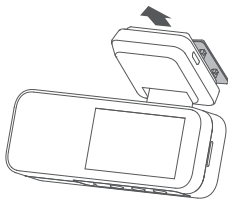
### 2) Attach the dash cam

Remove the 3M adhesive protective film, attach the dash cam bracket to the electrostatic film, and adjust the dash cam to the appropriate angle.



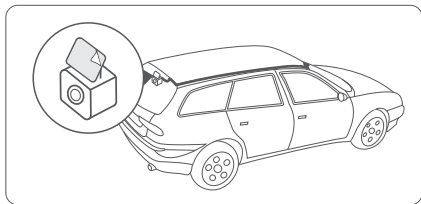
### Removal and installation of the dash cam:

Slide the dash cam upwards in the direction of the arrow (as indicated in the diagram below) until you hear a "click" sound. This indicates that the dash cam is ready to be taken down. In contrast, align the hole on the back of the dash cam bracket with the snap position on the 3M adhesive, and slide the bracket downwards until you hear a "click" sound, indicating that the dash cam can be installed.



### 3) Wiring and installation of the rear camera

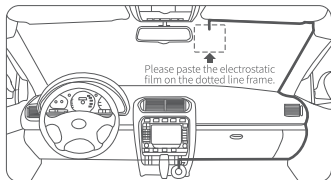
Arrange the rear camera cable from the front windshield to the rear windshield, as shown in the picture below.



#### 4) Wiring and connecting the power supply

Route the power cord along the top of the front windshield, through the A-pillar, and into the storage compartment located at the front passenger seat, close to the cigarette lighter port, as shown in the diagram below. Then, connect the power cord to the cigarette lighter power supply.

Tip: You can use the included wiring pry bar to bury the power cord under the A-pillar sealant strip. Please note that the position of the cigarette lighter port may vary between different vehicles, and the pictures are for reference only.



## ADAS Calibration Guide

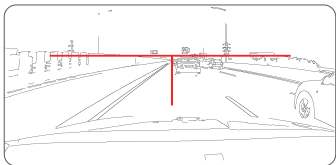
To ensure the accuracy of ADAS, it is essential to perform ADAS calibration before use.

After completing the wiring, the dashcam will power on automatically and start recording. Upon the first power-up, ADAS calibration is required. Please follow the steps shown in the diagram for adjustment. (If not the first power-up, navigate to the ADAS calibration in the driving assistance section within the settings menu.)

Step 1: Adjust the installation position of the dashcam to align the vertical line of ADAS calibration with the centerline of the vehicle as much as possible.

Step 2: Adjust the camera angle to align the horizontal line with the horizon of the road (the plane where the road meets the distance).

Step 3: After calibration is complete, ADAS will become effective. For detailed ADAS function triggering conditions and alert content, please refer to the electronic manual.



ADAS functions are only used to provide information and cannot replace your observation of all roads and driving conditions. Please comply with traffic regulations and take responsibility for safe driving judgment. This function relies on recorder warnings, so the function may be limited under low visibility conditions.

## Download and Installation of the App

Method 1: Scan the QR code provided below to download and install the app.

Method 2: Search for "botslab" in major application stores and click Download to install the botslab app.



Scan to download **Botslab** APP

## User Guide

Scan the QR code to access the online version of Quick Start Guide, and obtain more detailed instructions on how to use the dash cam.



## Precautions for Using the Dash Cam

- This product is an auxiliary device (dash cam) for safe driving.
- Any losses resulting from product malfunctions, data loss or product usage are not the responsibility of our company.
  
- This product is designed as an auxiliary device to record external images of vehicles. Due to different driving and vehicle environments, some functions may not be supported.
- Firmware upgrades are carried out periodically to improve the product, which may cause changes in product performance, and sometimes may lead to the inability to capture images due to the usage environment. Therefore, the driving images recorded in this product are for reference only.
- Although this product can record and save images of vehicle accidents, it does not guarantee that all accident images can be recorded. A minor collision accident may not activate the collision sensor, so the image may not be recorded in a dedicated folder.
- Do not install or operate this product while the vehicle is in motion.
- This product must be directly connected to the car's power supply system and installed by professionals with installation experience. Do not use this product for a long time without starting the engine.
- This device may interfere with the function of improperly protected medical devices. If you have any questions or are uncertain whether the medical device can shield external RF energy, please seek advice from a doctor or the medical device manufacturer.
- Do not subject this product to strong shocks or vibrations, which may damage the product, resulting in malfunction or inability to use.
- Before cleaning or maintenance, please stop using the product.
- Do not use chemical solvents or cleaning agents to clean this product.
- Do not disassemble or modify this product without authorization.
- The normal temperature range for using this device is between 0°C and 50°C.
- Please ensure that you use this product within the limits allowed by law.

# Important Statement

## Personal Information Security

To ensure the safety of you and your family, please make sure that your product is only bound by authorized persons. Botslab will take strict measures to ensure the security of your and your family's information.

FCC regulatory conformance:

This device complies with Part 15 of the FCC Rules. Operation is subject to the following two conditions:

- (1) This device may not cause harmful interference.
- (2) This device must accept any interference received, including interference that may cause undesired operation.

NOTE: This equipment has been tested and found to comply with the limits for a Class B digital device, pursuant to part 15 of the FCC Rules. These limits are designed to provide reasonable protection against harmful interference in a residential installation.

This equipment generates uses and can radiate radio frequency energy and, if not installed and used in accordance with the instructions, may cause harmful interference to radio communications. However, there is no guarantee that interference will not occur in a particular installation. If this equipment does cause harmful interference to radio or television reception, which can be determined by turning the equipment off and on, the user is encouraged to try to correct the interference by one or more of the following measures:

- Reorient or relocate the receiving antenna.
- Increase the separation between the equipment and receiver.
- Connect the equipment into an outlet on a circuit different from that to which the receiver is connected.
- Consult the dealer or an experienced radio/TV technician for help

NOTE: The manufacturer is not responsible for any radio or TV interference caused by unauthorized modifications to this equipment. Such modifications could void the user's authority to operate the equipment.

# Attentions And After-Sales Service

## I. Introduction and declaration of after-sales service

- Thank you for choosing the Botslab dash cam. Please use only the accessories provided by the original manufacturer to avoid unexpected malfunctions or damage. Failure to use the product as outlined here, or connecting it with incompatible accessories, will result in your warranty becoming void. The company assumes no responsibility for any danger or damage caused by such unauthorized uses. If you dismantle or change the product housing, the warranty will also become invalid.
- Our company is committed to constant improvement and sustainable development. As a result, we may modify and improve the product manual without advance notice to users.
- Unless otherwise specified by applicable laws, the manual contents are provided based on the product's manufacturing conditions. Therefore, no explicit or tacit warranty of any kind is made for the correctness, reliability, or contents of the files.
- The product manual is protected by copyright law. Copying, transmitting, distributing, or using it in other forms is forbidden without the written approval of Botslab.

## II. In regards to service policies within the warranty period of the Botslab dash cam:

1. This product contains a one-year warranty. For details on warranty service, kindly contact local authorized distributors.
2. The warranty period for the power adapter and charger cable is 12 months, and for the battery, it is 6 months.
3. Non-electronic accessories are not covered by the warranty.



This symbol means the product must be discarded as household waste, and should be delivered to an appropriate collection facility for recycling. Proper disposal and recycling helps protect natural resources, human health and the environment. For more information on disposal and recycling of this product, contact your local municipality, disposal service, or the shop where you bought this product.

## List of Performance Faults of Botslab Dash Cam

Name	Performance fault
Mainframe of Botslab dash cam	Failure of functions listed in the product manual; No display or incorrect characters displayed on the screen; Failure during start-up or normal recording of image data; Button control failure; Cracks in the housing caused by structural or material issues.
Charger & charger cable	Abnormal status or operation, or failure to charge properly with the designated charger.

### III. Charged maintenance policies of Botslab recorder product

If any of the following cases occur, the Botslab Company or its authorized service centers will provide reasonable maintenance services at a cost for those outside the scope of the warranty.

1. Exceeding the valid warranty period.
2. Lack of warranty certificate or valid invoice. The warranty certificate does not match the model and labeling of the product, or has been tampered with.
3. Damage caused by usage, repair, and maintenance that does not follow the requirements in the User Manual. Damage or malfunction resulting from personal removal, maintenance, or modification of the system software without authorization from the Botslab Company.
4. Collision, soaking, breaking or burning of the printed circuit board.
5. Cracking or damage to the outer shell, LCD screen, antenna, etc. of the Botslab dash cam during use, except for that caused by structural or material factors.
6. Damage due to force majeure.

## Contact Us

**Website:** <https://www.botslab.com>

**Email:** [service@botslab.com](mailto:service@botslab.com)

**Facebook:** @botslabofficial

# RF Exposure

CE:

EU regulatory conformance:

RF exposure information: The Maximum Permissible Exposure (MPE) level has been calculated based on a distance of 20cm between the device and the human body. To comply with RF exposure requirements, it is recommended to use the product while maintaining a distance of 20cm between the device and the human body.

CE DOC

Hereby, Botslab Inc. declares that theradio equipment type G980H-N529-1 is in compliance with Directive 2014/53/EU.Thefull text of the Eu declaration of conformity is available at the following internet.

address: <https://www.botslab.com>

Manufacturer information:

Company name: Botslab Inc.

Address: 919 North Market Street, Suite 950, Wilmington, New Castle, Delaware, USA

Operation temperature: 0~50 C

Operation frequency(Max power)

Wifi : 2412MHz-2472MHz (<20dBm), 5745MHz-5825MHz (<13.98dBm)

Bluetooth: 2402MHz-2480MHz (<13dBm)

FCC:

This equipment complies with FCC radiation exposure limits set forth for an uncontrolled environment. This equipment should be installed and operated with minimum distance of 20 cm between the radiator and your body. This transmitter must not be co-located or operating in conjunction with any other antenna or transmitter.

Responsible party (contact for FCC matters only):

Botslab Inc.

919 North Market Street, Suite 950, Wilmington, New Castle, Delaware

[www.botslab.com](http://www.botslab.com)

# IC regulatory conformance

This device complies with CAN ICES-003 (B)/NMB-003(B).

This device complies with Industry Canada licence-exempt RSS standard(s).

Operation is subject to the following two conditions:

- (1) this device may not cause harmful interference, and
- (2) this device must accept any interference received, including interference that may cause undesired operation.

Cet appareil est conforme à la norme CAN ICES-003 (B)/NMB-003 (B).

Le présent appareil est conforme aux CNR d'Industrie Canada applicables aux appareils radio exempts de licence. L'exploitation est autorisée aux deux conditions suivantes :

- (1) l'appareil ne doit pas produire de brouillage, et
- (2) l'utilisateur de l'appareil doit accepter tout brouillage radioélectrique subi, même si le brouillage est susceptible d'en compromettre le fonctionnement.

## RF Exposure

This equipment complies with IC radiation exposure limits set forth for an uncontrolled environment. This equipment should be installed and operated with minimum distance of 20 cm between the radiator and your body. This transmitter must not be co-located or operating in conjunction with any other antenna or transmitter.

Cet équipement est conforme aux limites d'exposition aux rayonnements de la IC établies pour un environnement non contrôlé. Cet équipement doit être installé et fonctionner à au moins 20cm de distance d'un radiateur ou de votre corps.