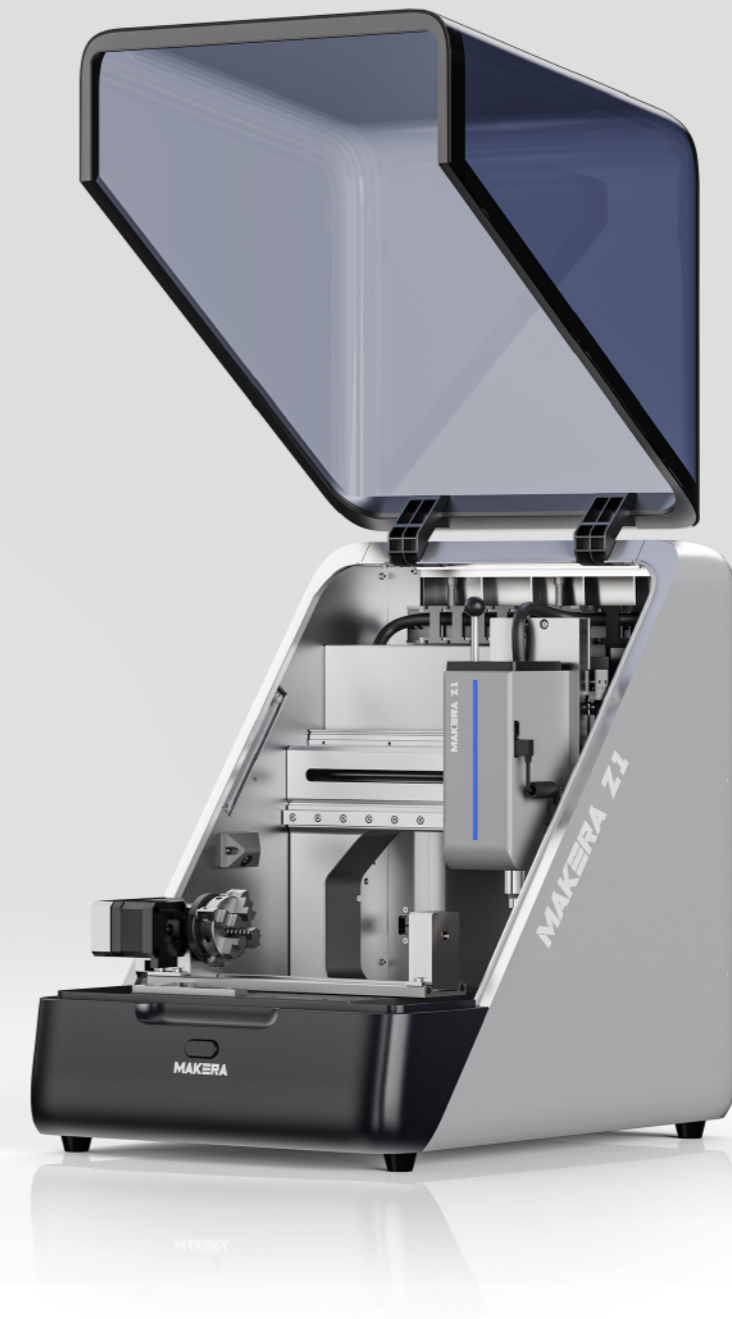


MAKERA Z1

Quick Start Guide

Model: Z1&Z1Pro

MAKERA
BE A MAKER, SHAPE AN ERA!



www.makera.com



wiki.makera.com

Scan the QR code to view detailed guides, including the user manual, maintenance instructions, and troubleshooting.

扫描二维码观看详细指南, 如使用手册、维护方法、故障排查等。



makerables.com

Scan the QR code to visit Makerables, our CNC content community. Discover and share CNC projects, and use AI tools to turn ideas into reality quickly.

扫描二维码访问Makerables, 我们的CNC内容社区。发现并分享CNC模型案例, 并使用AI工具快速将想法变成现实。



makera.com/support

If you encounter any issues with your Carvera Air, scan the QR code for solutions or contact us directly.

如果您遇到任何关于Carvera Air的问题, 可扫描二维码查询解决方案或直接联系我们。

CONTENTS

1. Read Before Use-----	03
2. Unboxing-----	03
3. Machine Overview-----	03
4. What's Included-----	04
5. Common Tools-----	05
6. Setting Up the Machine-----	05
7. Your First Job-----	05
8. Next Steps-----	05

1. Read Before Use

使用前阅读

Before using your Makera Z1 (Z1&Z1Pro), make sure to read thoroughly and understand the Safety Guidelines. Failure to follow the safety instructions may result in personal injury, inferior results, or damage to the product.

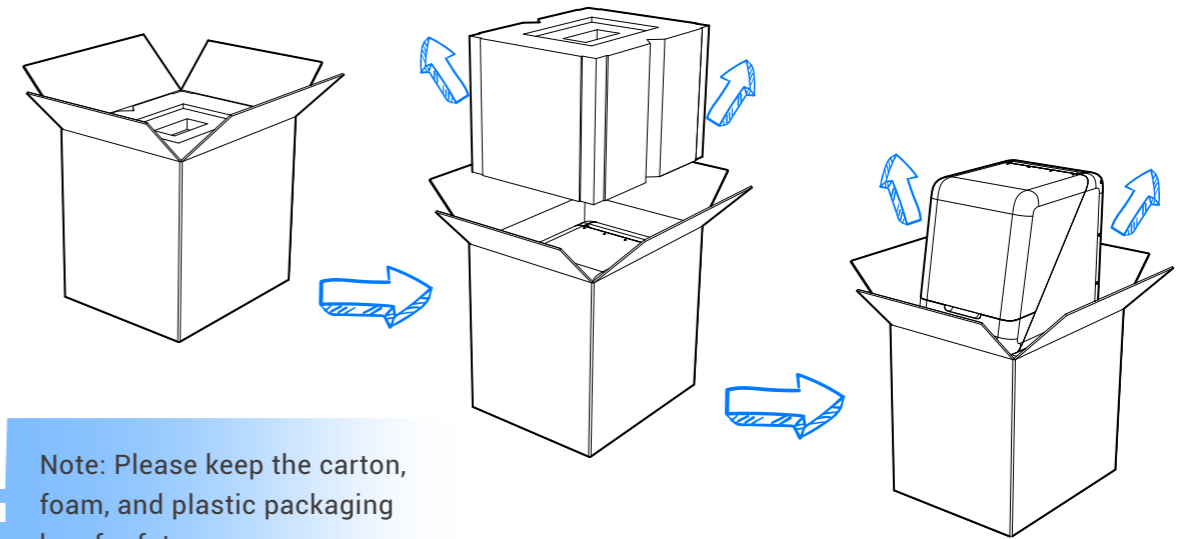
使用 Makera Z1(Z1&Z1Pro) 前, 请确保你已仔细阅读并理解《安全须知》中的内容。未按安全指引操作将可能导致人身伤害、制作成品质量低下, 或对产品造成损坏。

2. Unboxing

开箱

Remove the protective foam from the top and sides, then carefully lift the machine out of the box with assistance from another person.

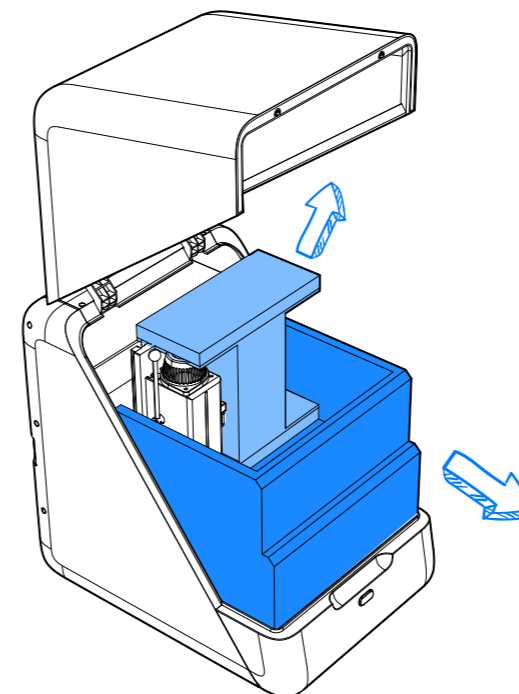
取下箱内顶部和侧面的保护泡沫, 然后在他人协助下, 小心地将机器从箱中抬出。



Note: Please keep the carton, foam, and plastic packaging bag for future use.

Carefully open the machine's top cover as shown in the illustration below, then gently remove the internal foam and accessories from inside the machine.

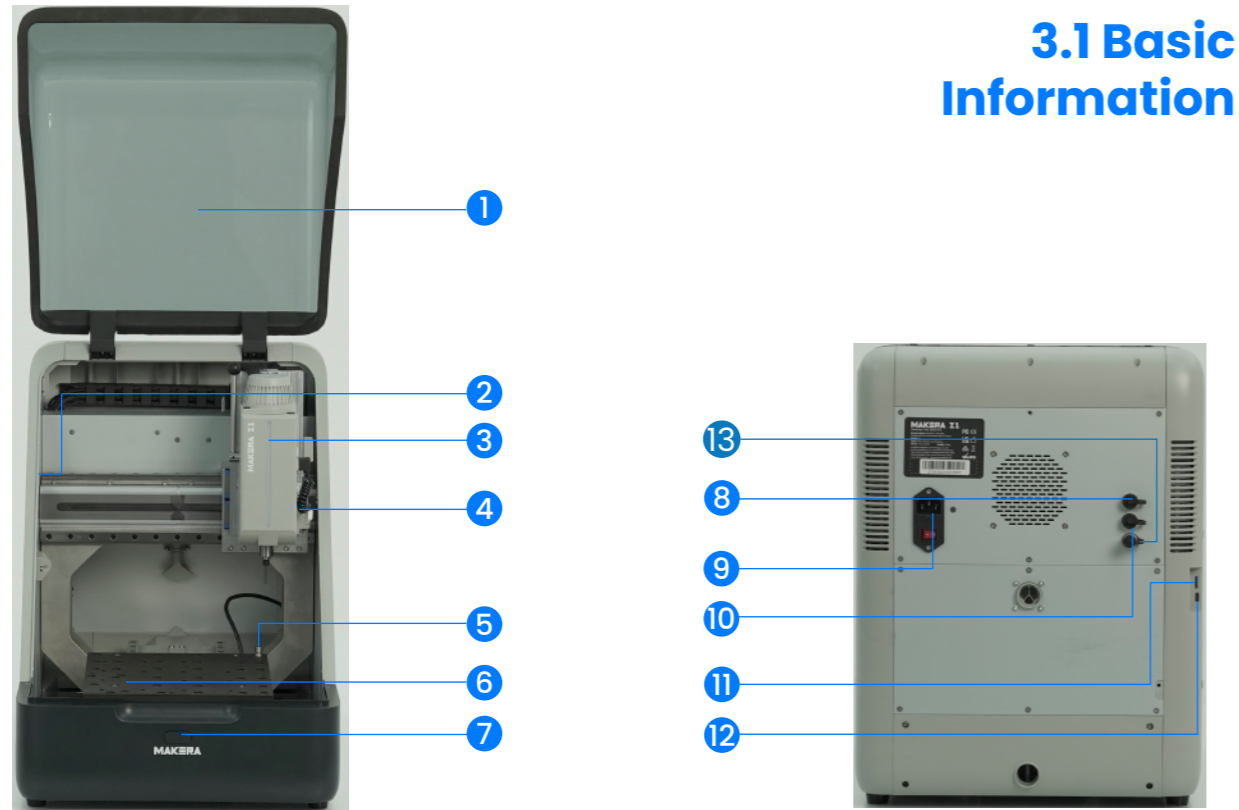
请按照下方示意图所示, 小心打开机器顶部盖板, 然后轻轻取出机器内部的保护泡沫和配件。



Note: When opening the top cover, follow the illustrated steps to avoid damage.

3. Machine Overview

机器概览



3.1 Basic Information

- 1. Machine Cover
- 2. Illumination Lights
- 3. Indicator Light
- 4. Wired Probe
- 5. Auto Tool Setter
- 6. Machine Bed
- 7. Main Button
- 8. Emergency Stop
- 9. Power input
- 10. External Control
- 11. SD card
- 12. Data (type-C)
- 13. Factory test port

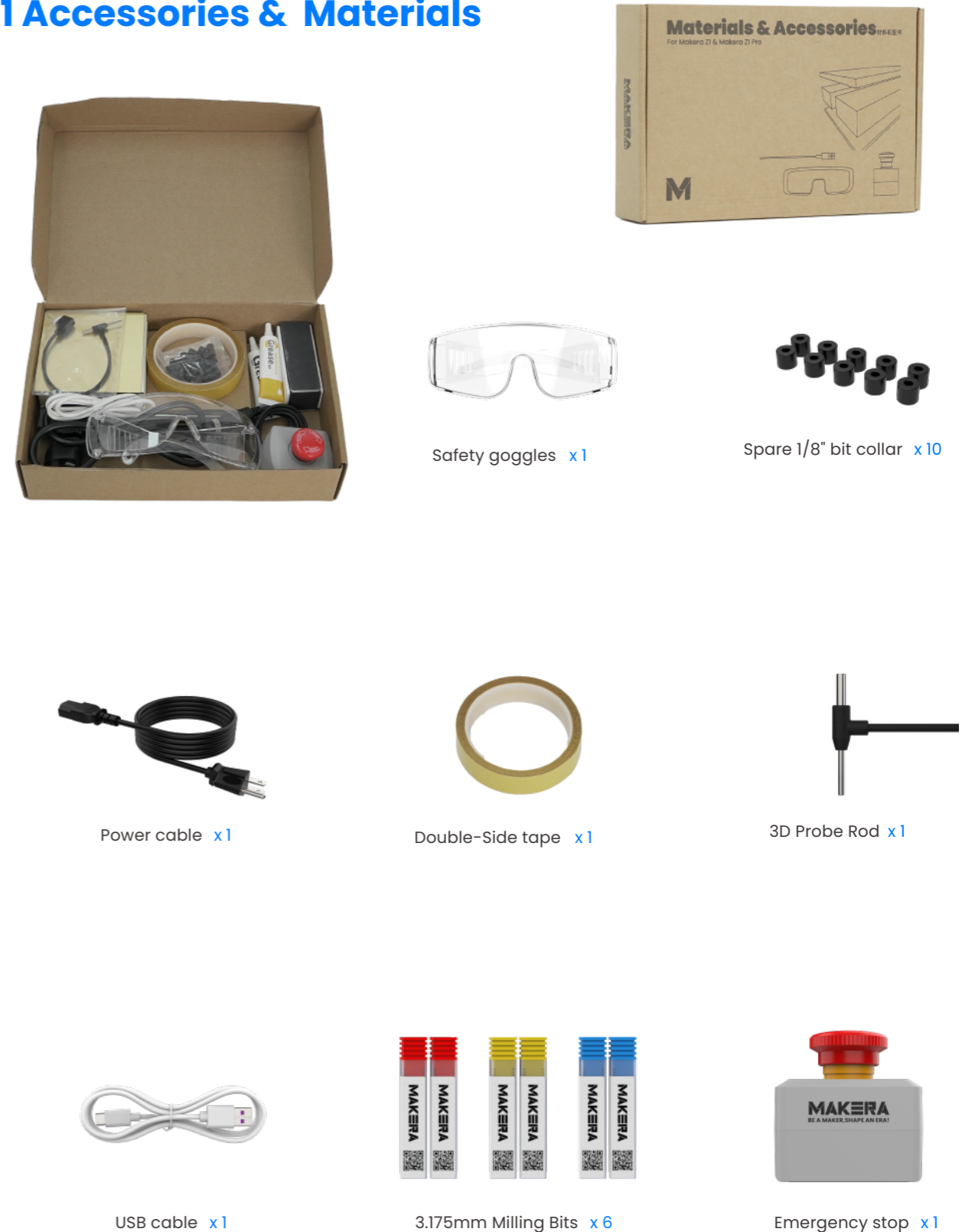
3.2 Status Indicator

Colour	Status	How It Is Triggered/How To Quit	状态	触发条件/解除方式
●	Idle	Machine is idle	待机	机器处于空闲状态
●	Run	Machine is working	运行	机器正在运行
●	Alarm	Machine has an alarm/Unlock it to restore	警报	设备异常/需解锁恢复
●	Home	Machine is resetting the coordinate	归零	机器坐标系归零重置
● ●	Hold	Click the hold button/Click again to resume	保持	点击暂停按钮/再次点击回复
● ●	Wait	Machine is emptying the buffer	等待	机器缓冲资料清除中
●	Disable	No device has been connected	禁用	未连接设备
●	Sleep	Timeout/Reboot machine to restore	休眠	超时未操作/需重启机器恢复
● ●	Pause	Click the hold button/Click again to resume	暂停	点击暂停按钮/再次点击恢复
● ●	Tool/Wait	Waiting for tool changing	工具待机	等待更换工具

4. What's Included

包含内容

4.1 Accessories & Materials



Safety goggles x1

Spare 1/8" bit collar x10

Power cable x1

Double-Side tape x1

3D Probe Rod x1

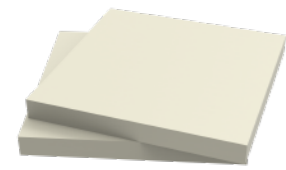
USB cable x1

3.175mm Milling Bits x6

Emergency stop x1

5. Common Tools

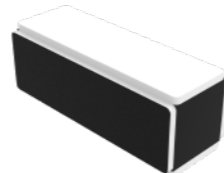
常用工具



Epoxy Tooling board x2



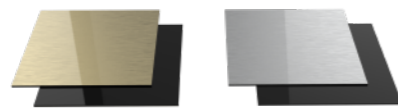
Aluminum plate x1



Stand Block x1



MDF Board x2



Bicolor Stock x2



grease x2

4.2 Tool Kits



1 L bracket x1

2 4 in 1 Screwdriver x1

3 M5 Screws x10

4 4mm Dowel pin x5

5 Top clamp x2

6 Milling bit x6

7 Spindle collet installer x1

8 Bit collar installer x1

5.2 Wired Probe

The wired probe supports automatic Z-axis probing. When prompted, install it like a milling bit. It includes a laser indicator that turns on automatically during boundary scanning, or can be activated by double-tapping the probe.

有线探针支持自动 Z 轴探测。软件提示时，像更换刀具一样装入探针即可。探针带激光指示，扫描边框时自动亮起，也可双击探头手动开启。



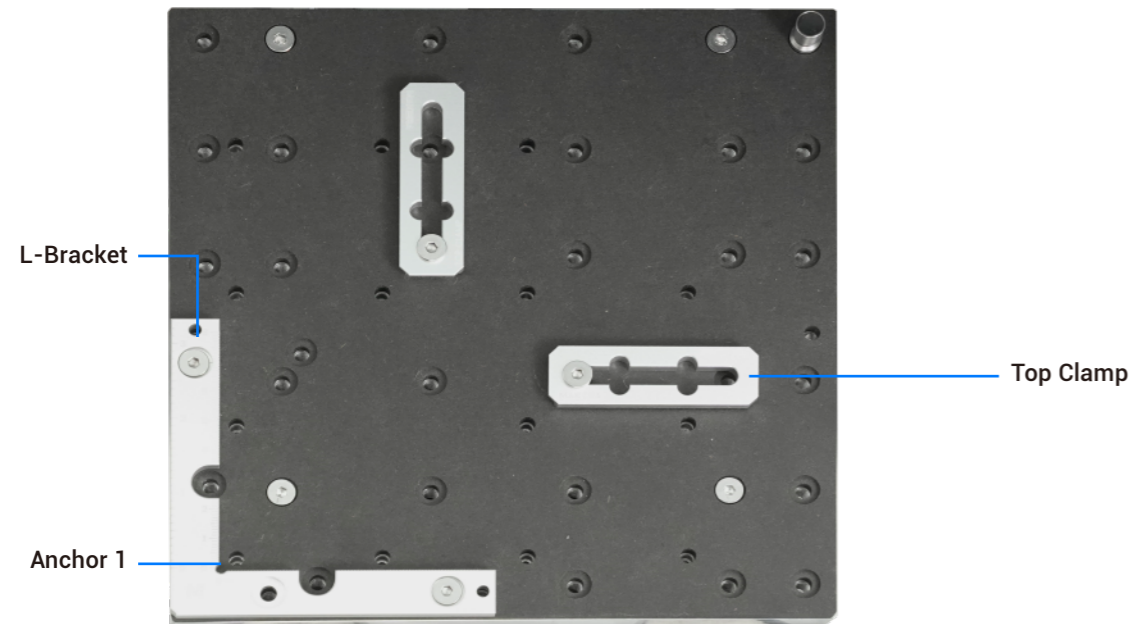
Plug the emergency stop cable into the rear port. Press it to stop the machine immediately in an emergency. The E-stop is self-locking; turn it clockwise to release before powering on.

将急停开关线插入机器后部接口。紧急时按下可立即停止机器。急停为自锁式，开机前请顺时针旋转至解锁状态。

5.3 Workholding Tools

Install and secure the L-Bracket using two dowel pins and three M5×20 screws. The default position serves as the anchor point for X/Y alignment. Threaded holes on the inner side allow clamping with Top Clamps.

使用 2 个定位销和 3 颗 M5×20 螺丝安装并固定 L 型靠山。默认位置为锚点，便于 X/Y 轴定位。内侧带螺纹孔，可配合上压板固定工件。



5.4 More

Scan the QR code to view a more detailed accessory guide.

扫描二维码查看更详细的配件使用指南。



wiki.makera.com

6. Setting Up the Machine

机器设置

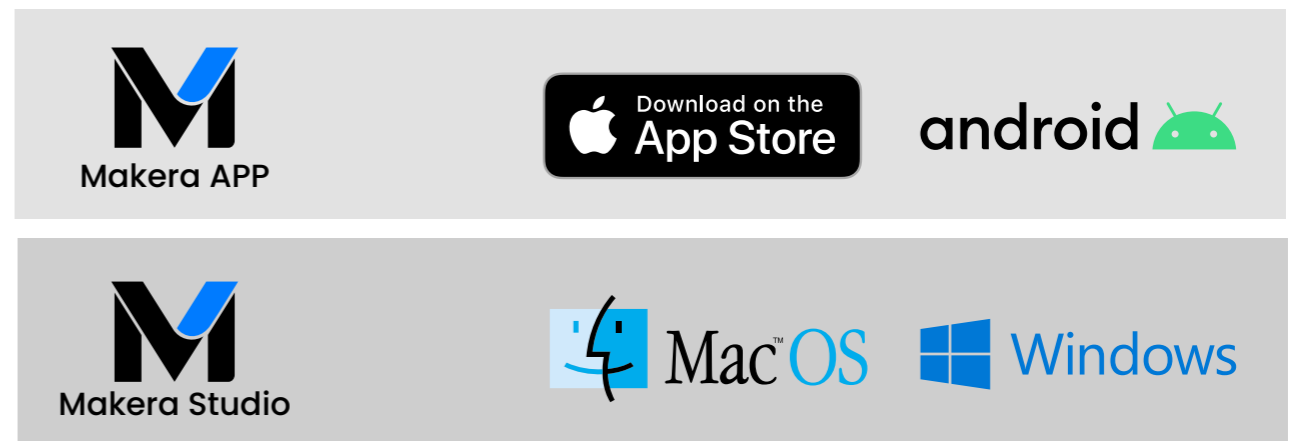
6.1 Install Software



makera.com/software

Scan the QR code to download Makera Studio and the Makera App. Design and generate toolpaths on your computer, then control the machine from your computer or mobile device.

扫描二维码下载Makera Studio和Makera APP，您可以在电脑上设计并生成刀路文件，并在电脑或移动设备上控制机器运行。



6.2 Power On

Plug in the power cable and turn on the switch. Makera Z1 (Makera Z1Pro) will home all axes automatically, and the illumination light will stay blue (idle).

插上电源线并打开电源开关。Makera Z1 (Makera Z1Pro) 将自动回零所有轴，指示灯保持蓝色 (空闲状态)。



6.3 WiFi Configuration

You can configure the network for Makera Z1(Z1&Z1Pro) using the Makera APP (connected to the machine's AP) or Makera Studio (connected to the machine's AP or via USB). Add the device in the software and follow the setup wizard to complete the WiFi configuration. Visit wiki.makera.com for the detailed software user guide.

您可使用 Makera APP (连接机器 AP) 或 Makera Studio (连接机器 AP 或通过 USB 有线连接) 为 Makera Z1(Z1&Z1Pro) 配网。在软件中添加设备并按向导完成网络设置。前往wiki.makera.com查看软件详细操作指南。



7. Your First Job

首次加工

Your Makera Z1(Z1&Z1Pro) is ready—time for your first job! Scan the QR code below or visit makerables.com/OfficialTutorials to choose an official tutorial project. Follow the specified tools, materials, workholding method, and machine settings (all required tools and materials are included with your machine).
Happy Milling!

您的 Makera Z1(Z1&Z1Pro) 已准备就绪, 开始首次加工吧! 扫描下方二维码或访问 makerables.com/OfficialTutorials, 选择喜欢的官方教程项目, 并按说明中的刀具、材料、装夹方式和参数进行加工 (所需刀具和材料均已随机器附赠)。



MAKERABLES

8. Next Steps

下一步

For more detailed instructions, please visit our official Wiki and select Makera Z1(Z1&Z1Pro)

更详细操作说明, 请访问我们的官方 Wiki 并选择 Makera Z1 (Z1&Z1Pro)。
wiki.makera.com

The latest this guide is available on our website. If you encounter any issues, feel free to contact us.

最新的本指南可在官网获取。如在使用过程中遇到任何问题, 欢迎随时联系我们。

www.makera.com/support