

AMPHIBIOUS STUNT CAR

INSTRUCTIONS

THANK YOU FOR YOUR CHOOSE OUR PRODUCT IN ORDER TO UNDERSTAND OUR PRODUCT BETTER, PLEASE READ THE FOLLOWING INSTRUCTIONS FOR USE, WHICH BRING YOU DIFFERENT OPERATING EXPERIENCE.

NOTE: (The products in this manual are only for reference. Please refer to the real product for the shape!)

BATTERY OPERATE PRODUCT

This product is suitable for children 8 years old and above, after assembled / charged by adults, play with children again.

Please use this product under the supervision of adult.

Warning: Please do not disassemble or modify this product without authorization. Any changes may cause the product to malfunction.

Precautions for use

- The car body of the product uses 1 rechargeable battery, the number of volts is detailed in the battery diagram of the battery room; the remote control uses 2 1.5V AA non-rechargeable batteries; the remote control of the watch uses 2 1.5V AAA non-rechargeable batteries; The lever remote control uses two 1.5V AAA non-rechargeable batteries;
- Battery removal and loading should be toy battery room polarity and voltage correctly operate;
- Non-rechargeable battery is not rechargeable;
- Rechargeable batteries must be charged under adult supervision;
- The rechargeable battery should be removed from the toy before charging;
- Different types of batteries or old and new batteries can not be mixed;
- Only batteries that are the same or equivalent to the recommended battery can be used;
- Exhausted battery should be removed from the toy; if not used for a long time, please remove the toy battery
- Power terminals may not be short-circuited;
- Use a screwdriver to unscrew the screws on the cover of the battery compartment, insert the batteries according to the correct polarity of the positive and negative poles, and unscrew the screws on the cover of the battery compartment with a screwdriver to remove the battery;
- Maintenance and maintenance: This product is composed of plastics, hardware and electronic components. Regularly check whether the wires, plugs, casings and other parts are damaged. When defects are found, stop using them until they are repaired in good condition.

Product configuration (For reference only, optional)

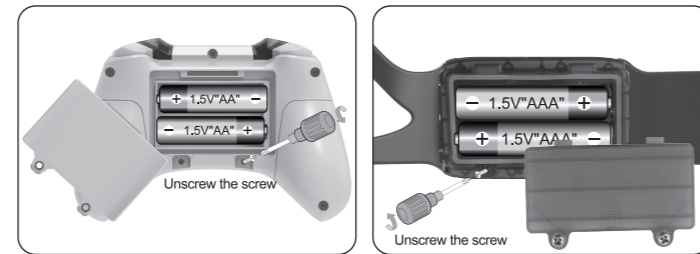


(1)

How to install the battery

I. The remote control

- Open the remote control battery cover, and install AA batteries according to the positive and negative directions in the battery compartment of the remote control.

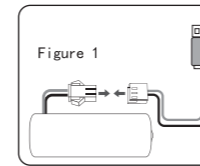


II. Remote control car

- Open the battery cover under the car, connect the rechargeable battery pack to the power socket and put it into the battery compartment under the car.
- Close the battery cover and tighten with a screwdriver.

How to charge

- Before playing, please charge the new battery pack.
- First plug the battery pack plug in the charger, then plug the charger into the socket.
- Using a 3.7V charger, the time required for the battery to fully charge is 3-4 hours, and the charging line is equipped with an indicator light. The red light is on when charging, and the red light is off when fully charged. Do not overcharge, as prolonged charging will not increase the power.



Description of automatic code matching

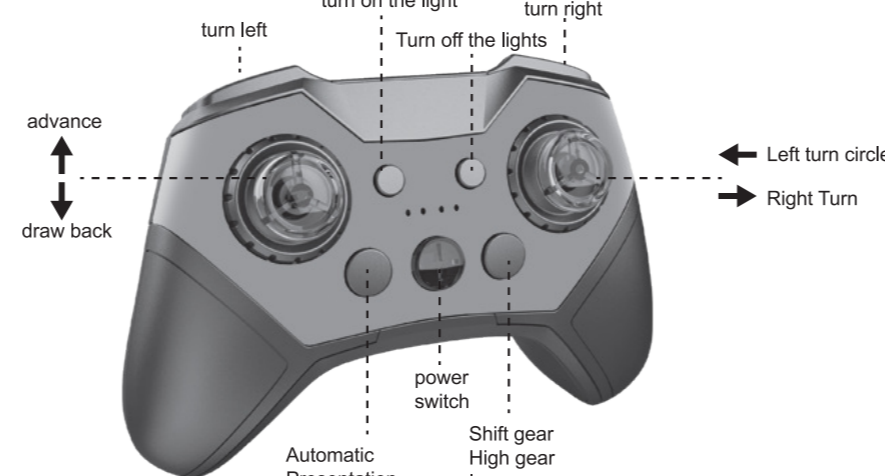
- When the remote control is equipped with a battery, the indicator light on the remote control starts to flash. When the remote control car is equipped with a battery and the switch is turned on, it begins to enter the connection state. When the connection is successful, the indicator light on the remote control will remain on for a long time; Note: If the connection is unsuccessful, please repeat the above operation.
- Each remote control can only be connected to one remote control car. When the connection is successful, each car will not interfere with each other. Note: Multiple cars cannot be connected at the same time.
- The remote control did not find a signal from the remote control car when it was energized after one minute, and the power indicator was flashing, and the power switch must be restarted to link the frequency.
- When you need to pair other remote controls or remote control cars of the same model, you need to turn off the power of the remote control and the remote control car to re-pair.

Operation tips

- Please ensure that the power switch is in the "ON" position. When you are operating, such as when the power switch is in the "OFF" position, the remote control car is turned off.
- When the battery power is consumed, the left and right steering becomes insensitive, and the forward and backward movements also slow down. At this time, it is necessary to remove the battery and charge it.
- The remote control vehicle effectively controls a distance of about 40 meters, beyond which it may stop or become uncontrolled.
- When the game is over, just turn off the switch on the remote control and the car will enter sleep mode.
- The waterproof ring of the battery compartment of the car and remote control should be flat and not slightly protruding, so as to ensure that no water enters when playing on the water.

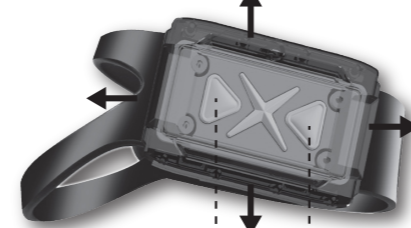
(2)

Function description of remote controller (with waterproof function)



Introduction to Handle Remote Control Buttons

Introduction to Watch Remote Control Buttons



Long press to turn on/off, short press to pause, and then press the right button to turn on/off the light

Long press automatic presentation Briefly press the left and right turn button to switch to a left and right turn

The left tilt of the fist is a left turn, and the right tilt of the fist is a right turn; Down with your fist is forward, up with your fist is backward.

Waterproof remote controller

- The remote controller of this product has a newly upgraded waterproof function, which can prevent water splashing and splashing. If the remote controller falls into the water, picking it up can also be used as usual, with dust or soiled surfaces, and can also be washed clean with clean water. The user-friendly design avoids problems such as short circuits, no signals, unstable wireless operation, and difficult cleaning caused by wetting.
- Note: During play, the remote control cannot be placed in the water, it can only be placed on the surface of the water. In the water, the signal will deteriorate and the vehicle cannot be controlled.

(3)

General troubleshooting

Failure symptoms	cause of issue	Approach
The vehicle cannot be driven	<ol style="list-style-type: none"> The remote control is not connected or the switch of the remote control car is not turned on. The remote control or remote control car is not correctly installed in the battery. The power of the rechargeable battery pack is insufficient. 	<ol style="list-style-type: none"> Turn on the remote control car switch and reconnect the remote control. Put the battery into the remote control or remote control car correctly. Charge the rechargeable battery pack.
The vehicle is not controlled and the remote control distance is short	<ol style="list-style-type: none"> The battery or rechargeable battery pack in the remote control has insufficient power. There may be sources of interference near the site. 	<ol style="list-style-type: none"> Replace the batteries in the remote control with new ones, or charge the rechargeable battery pack. Change the venue.
Exception protection	When the function of the remote control car is hindered by external forces and cannot complete the full function, or when the circuit battery is short-circuited.	Turn on the power switch again to protect the remote control car from power failure.

Tips

When the car moves, please do not touch the wheels of the remote control car, so as to avoid injury.



Do not play on the curb or in dangerous places to prevent accidents.

Do not play remote control car in the sump.

Maintenance matters

- Keep away from sources of ignition, avoid direct sunlight, high temperature, humidity, or long-term exposure to the vehicle to avoid short circuits and fires.
- When not playing, take out the batteries of the car and remote control, and put the remote control car and remote control back into the color box packaging to avoid damage or deformation during transportation or storage.
- The remote control vehicle must be lightly wiped with a damp cloth.
- When playing with a remote control car, there will be a prompt when the power is low. The indicator light on the remote control will flash 3 minutes in advance, and it is necessary to drive back and charge it in a timely manner.

Instructions

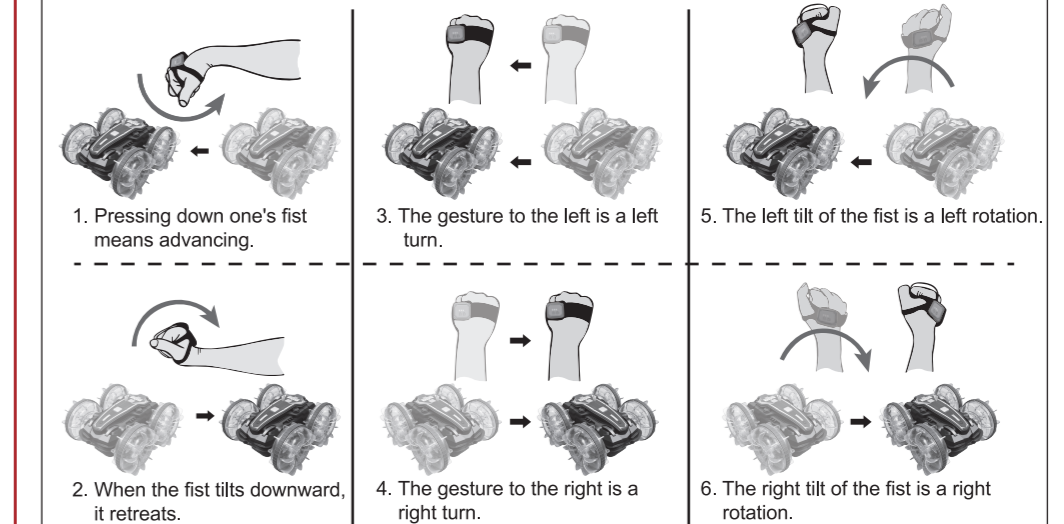
The battery charger used for this toy must be regularly inspected to prevent damage to electrical wires and other components. If damaged, it must be repaired before use.

(4)

To consumers

- When playing with a remote controlled car indoors, please be careful not to cause damage to furniture or glass.
- Please play outdoors in a safe place, and do not play with remote controlled vehicles on roads and in crowds to avoid danger.
- When playing with a remote controlled car outside and hearing thunder, you should immediately stop playing.
- When the wheel is rotating, do not extend your hand close to avoid injury, and do not get caught in hair, clothing, etc.
- Do not drive the remote control vehicle towards people.
- Do not litter or collide with remote controlled vehicles.
- When placing the remote control vehicle, please keep away from ignition sources and high temperature places.
- This vehicle uses complex electronic circuits and a large number of components. Please do not disassemble or modify the circuit board at will.
- When the remote control vehicle is covered with soil and dust after playing, it must be gently wiped with a damp cloth.

Demonstration of watch remote control operation



(5)

Federal Communications Commission (FCC) Statement. This device complies with part 15 of the FCC Rules. Operation is subject to the following two conditions:

- (1) This device may not cause harmful interference, and
- (2) this device must accept any interference received,

including interference that may cause undesired operation. Note: This equipment has been tested and found to comply with the limits for a Class B digital device, pursuant to part 15 of the FCC Rules. These limits are designed to provide Reasonable protection against harmful interference in a residential installation. This equipment generates, uses and can radiate radio frequency energy and, if not installed and used in accordance with the instructions, may cause harmful interference to radio communications. However, there is no guarantee that interference will not occur in a particular installation. If this equipment does cause harmful interference to radio or television reception, which can be determined by turning the equipment off and on, the user is encouraged to try to correct the interference by one or more of the following measures:

- Reorient or relocate the receiving antenna.
- Increase the separation between the equipment and receiver.
- Connect the equipment into an outlet on a circuit different from that to which the receiver is connected.
- Consult the dealer or an experienced radio/TV technician for help.

Warning: Changes or modifications made to this device not expressly approved by

may void the FCC authorization to operate this device. Note: The manufacturer is not responsible for any radio or TV interference caused by unauthorized modifications to this equipment. Such modifications could void the user's authority to operate the equipment.

RF exposure statement:

This device complies with FCC RF radiation exposure limits set forth for an uncontrolled environment. The device is installed and operated without restriction.