

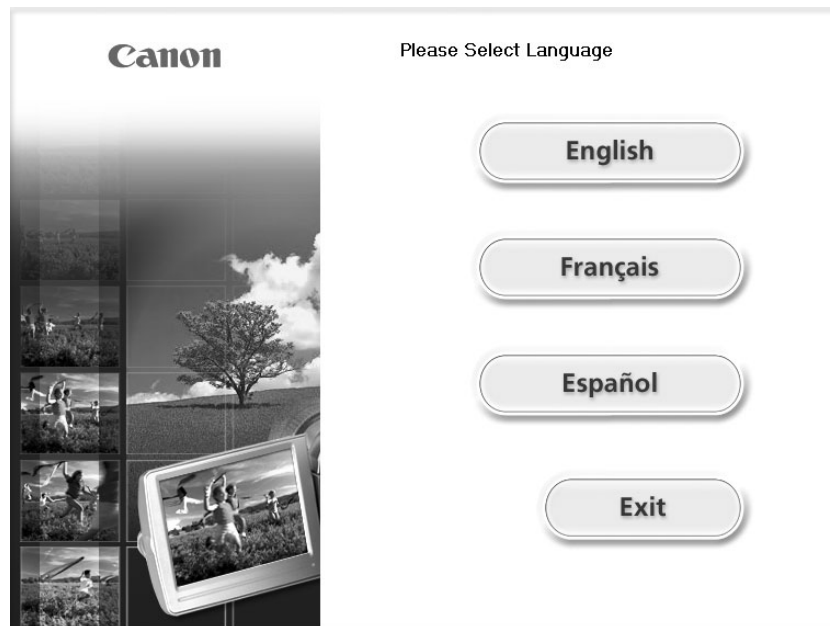
Canon

Digital Video Software Windows

Version 20

E

Instruction Manual



Contents

Read This First	4
Checking Supplied Accessories	5
System Requirements	6
What is Digital Video Software	7
Windows	8
CameraWindow	8
[Acquire Images] Tab	8
[Print] Tab	9
[Set to Camera] Tab	10
Camera Browser Window	11
Main Window	12
[Image Viewer] Window	17
[Red Eye Correction] Window	18
[Auto Adjustment] Window	19
[Color/Brightness Adjustment] Window	19
[Sharpness] Window	20
[Trim Image] Window	20
[Insert Text] Window	21
Installing the Digital Video Software	22
Before Downloading Images	26
Connecting the Camcorder to a Computer	26
Downloading Images (ZoomBrowser EX)	28
Starting CameraWindow	29
Using the Computer to Download Images	30
Auto-Downloading	30
Auto-Downloading Settings	31
Downloading the Selected Images from the CameraWindow	34
Using a Card Reader/Writer	37
Using the Camcorder to Download Images (Direct Transfer Function)	38
Direct Transfer	38
Setting the Direct Transfer Download Destination Folder	39
Printing Still Images	41
Printing Still Images Recorded on the Memory Card	41
Printing Still Images Downloaded to the Computer	46
[One Photo per Page Print]	46
[Index Print]	48
[Layout Print]	50
Organizing Images	53
Applying Star Ratings and Keywords.....	53
Classifying the Images.....	54
Renaming Multiple Files	56
Searching for Images.....	58
Playing Back and Editing Movies	61
Playing Back Movies.....	61
Editing Movies	63
Exporting Images	67
Changing the File Type and Save.....	67
Exporting Movies	71

- Extracting Still Images from Movies (Windows XP Only)..... 74
- Saving on CD-R/RW Disks (Windows XP Only)..... 77
- Adding Still Images from Your Computer to the Memory Card 80
 - Adding Still Images to the Memory Card 80
 - Adding Sample Images to the Memory Card 82
- Using Various Functions 85**
 - Attaching Still Images to E-mail Messages..... 85
 - Running a Slide Show 88
 - Adding Sound to an Image 90
 - Reviewing and Changing the Owner Name of the Camcorder..... 91
- Uninstalling the Software 93**
 - Uninstalling ZoomBrowser EX..... 93
 - Uninstalling the TWAIN Driver/WIA Driver..... 94
- Troubleshooting 95**

Read This First

■ Disclaimer

- While every effort has been made to ensure that the information contained in this guide is accurate and complete, no liability can be accepted for any errors or omissions. Canon reserves the right to change the specifications of the hardware and software described herein at any time without prior notice.
- No part of this guide may be reproduced, transmitted, transcribed, stored in a retrieval system, or translated into any language in any form, by any means, without the prior written permission of Canon.
- Canon makes no warranties for damages resulting from corrupted or lost data due to mistaken operation or malfunction of the camcorder, the software, memory cards (SD Memory Cards), personal computers, or peripheral devices, or due to use of a memory card not initialized by a Canon camcorder.

■ Trademark Acknowledgments

- QuickTime is a trademark of Apple Computer, Inc.
- Microsoft[®] and Windows[®] are either registered trademarks or trademarks of Microsoft Corporation in the United States and/or other countries.
- Other names and products not mentioned above may be registered trademarks or trademarks of their respective companies.

© Canon Inc. 2006 All rights reserved.

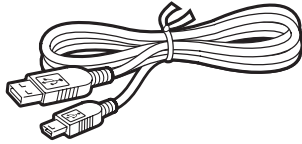
■ Safety Precautions

Do not play the supplied CD-ROM(s) in any CD player that does not support data CD-ROMs. Playing the CD-ROM(s) in an audio CD player (music player) could damage the speakers. It is also possible to suffer from hearing loss from listening with headphones to the loud sounds of a CD-ROM played on a music CD player.

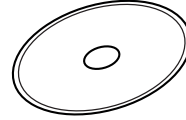
Checking Supplied Accessories

Use the following accessories to download recorded images from a memory card to your computer.

- IFC-300PCU USB Cable



- DIGITAL VIDEO SOLUTION DISK



E

The explanations in this manual use mainly Windows XP screen shots. The steps and windows may vary depending on your computer and the version of software.

System Requirements

Please install the software on a computer meeting the following minimum requirements.

- OS:** Windows 98 (Second Edition)
Windows Me
Windows 2000 (Service Pack 4)
Windows XP Home Edition or Professional (Service Pack 1 or 2)
* Proper operation is not guaranteed on an OS that has been upgraded from a previous version.
- Computer Model:** Computers that come with above OS preinstalled and have built-in USB ports.
- CPU:** Pentium 500 MHz or better
- RAM:** Windows 98/Windows Me: 128 MB or more
Windows 2000/Windows XP: 256 MB or more
- Interface:** USB: only preinstalled Windows 98/Windows Me/Windows 2000/Windows XP systems with built-in USB ports
- Free Hard Disk Space:**
- Canon Utilities
ZoomBrowser EX: 250 MB or more (Including the PhotoRecord printing program)
 - Canon DV TWAIN Driver: 25 MB or more
 - Canon DV WIA Driver: 25 MB or more
- Display:** 1024 × 768 pixels or better/High Color (16 bit) or better



- Proper operation is not guaranteed on a dual CPU PC or on a user-built PC.
- Proper operation is not guaranteed on any particular system, even if it meets the requirements outlined above.
- A CD-ROM drive is required to install the software.

In this Instruction Manual, product names are abbreviated as follows:

Microsoft® Windows® 98 Second Edition:	Windows 98
Microsoft® Windows® Millennium Edition:	Windows Me
Microsoft® Windows® 2000 (Service Pack 4):	Windows 2000
Microsoft® Windows® XP Home Edition or Professional (Service Pack 1 or 2):	Windows XP

What is Digital Video Software

The following software will be installed by installing the Digital Video Software.

E

■ ZoomBrowser EX

- Viewing downloaded images
- Categorizing, organizing, and searching large volumes of images
- Editing still images
- Editing movies recorded on a memory card and capturing still images from movies
- Changing the data for still images and save them as new files
- Viewing still images in a slide show
- Adding sound to an image

■ CameraWindow

- Downloading images from a memory card to your computer
- Printing still images recorded on the memory card without downloading the still images to the computer
- Viewing images recorded on a memory card

■ PhotoRecord

- Printing downloaded still images with background, frame, title and comments
- Creating downloaded still image albums

■ USB Driver

- Driver software that enables you to download images from a memory card to a computer. Users of Windows XP do not need to install this driver software. An OS standard driver will be installed automatically.
- Windows 98/Windows 2000: Canon DV TWAIN Driver
- Windows Me: Canon DV WIA Driver

This instruction manual explains how to install the software, what you can do with the main features and how to operate them. For more detailed operational instructions, refer to the Help menu of each software program.

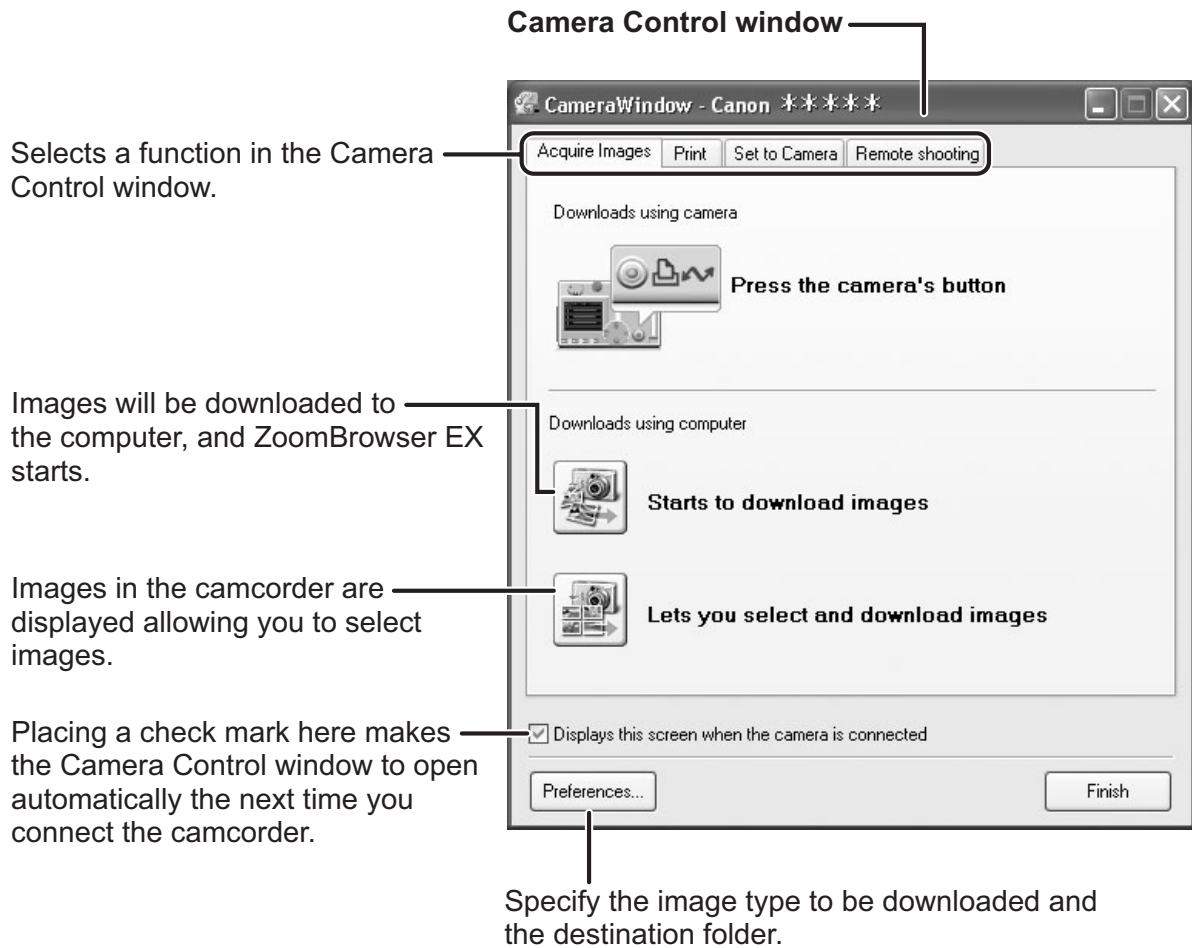
Windows

CameraWindow

CameraWindow is a program created to download still images from the memory card to the computer. Furthermore, you can print still images recorded on the memory card without having the images downloaded to the computer (📖 41). Refer to *Starting CameraWindow* (📖 29) for launching the software. Remote capture function is not supported by the camcorder.

■ [Acquire Images] Tab

This tab is used for downloading still images recorded on the memory card by connecting a camcorder or a card reader/writer to the computer.



■ [Print] Tab

This tab is used for printing still images on the memory card without having the images downloaded to the computer. The window varies depending on the selected printing type. Refer to *Printing Still Images Recorded on the Memory Card* (41).

E

Camera Control window

Prints all still images in the card one image per page.

Prints all still images in the card as an index page (rows of images on one page).

Prints according to the DPOF print settings set by the camcorder.

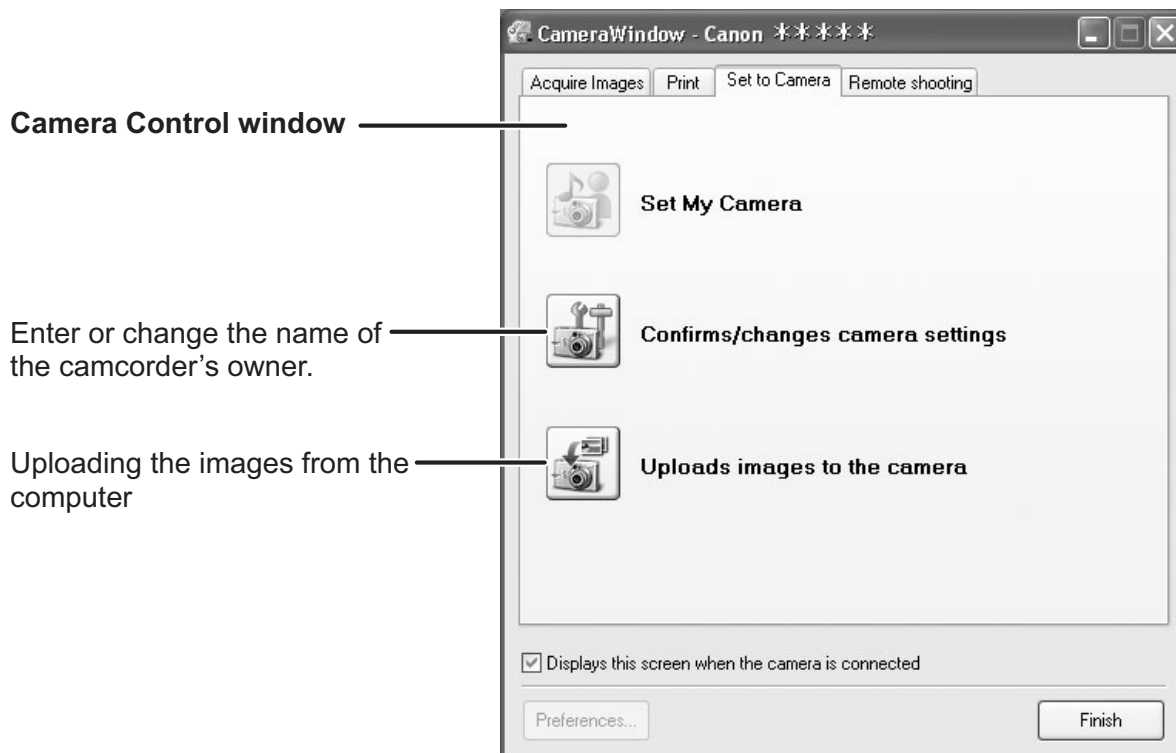
Displays a list of the still images in the card, allowing you to select which ones to print.



Windows

■ [Set to Camera] Tab

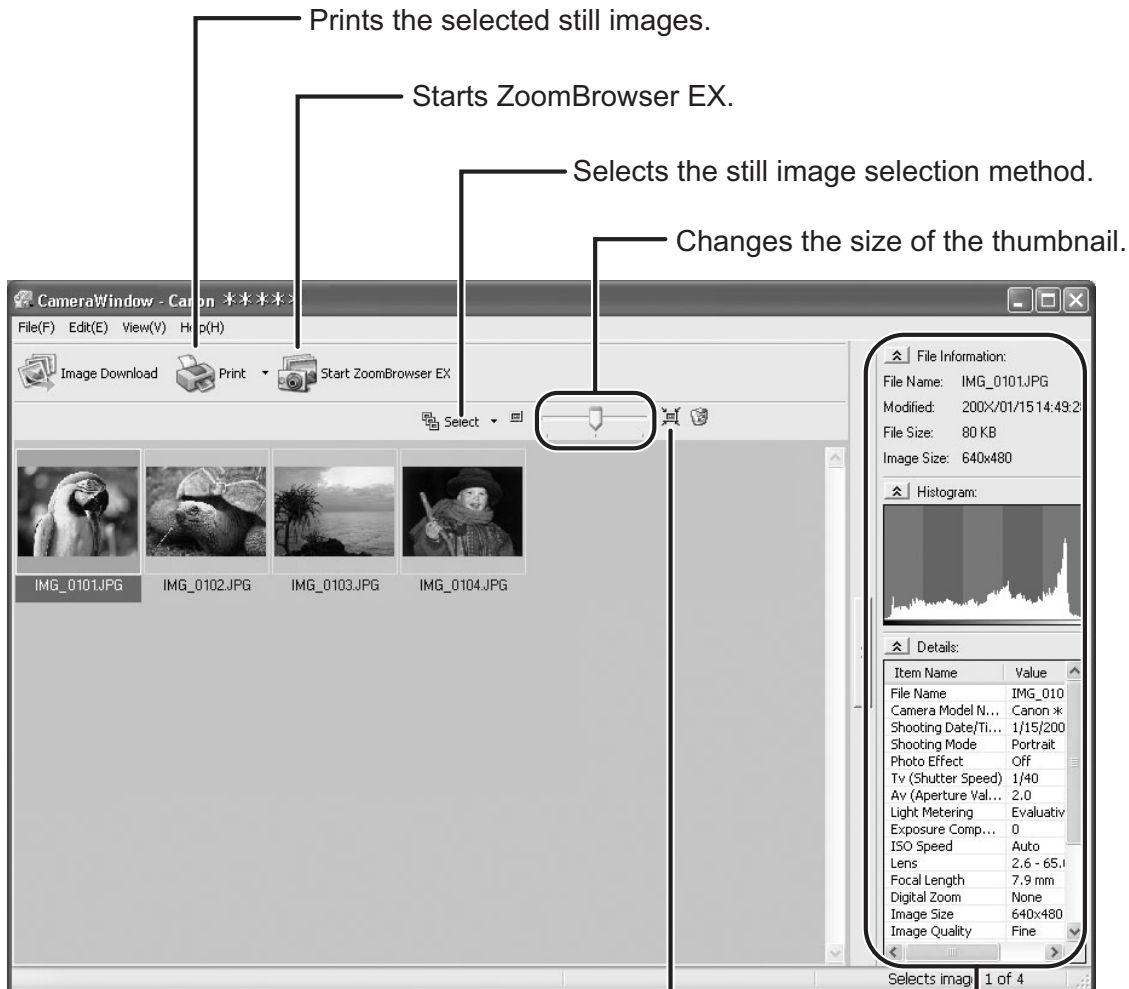
This tab is used for confirming and changing the camcorder settings and uploading the images to the card. My Camera function is not supported by the camcorder.



Selecting [Manage My Camera] from the [Edit] menu displays the [My Camera] window. If you click [Creating My Camera data] in the [My Camera] window, [My Camera Maker] will be launched. [My Camera Maker] is a program that enables you to create and import My Camera contents (Start-up images, Start-up sound, Shutter sound, Operation sound and Self timer sound) to camcorders that support this function. Your camcorder does not support the My Camera function.

■ Camera Browser Window

E





Selects whether to show or hide the image frame and file name.

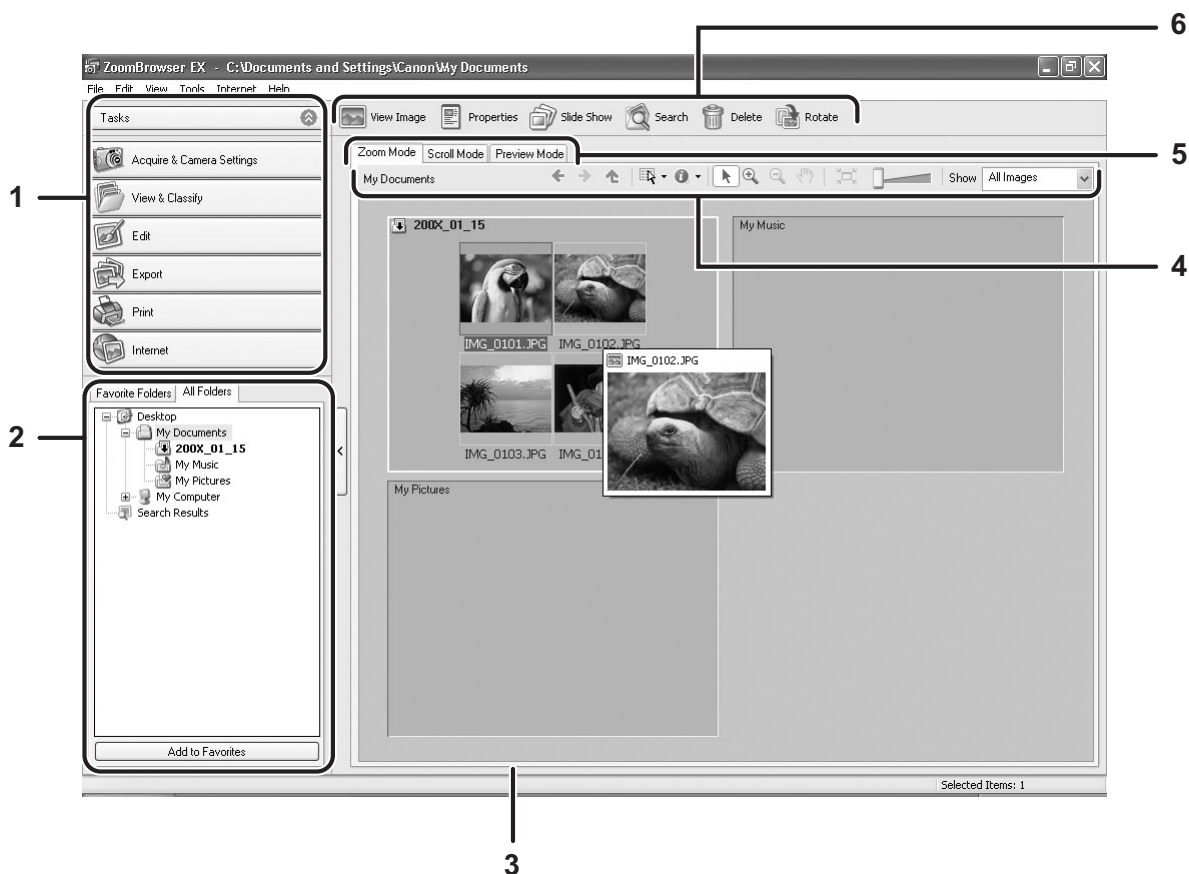
Still image information and a histogram

Windows



Main Window

ZoomBrowser EX is a software program used for organizing, printing and editing the downloaded images. If you wish to start ZoomBrowser EX without connecting the camcorder or card reader/writer, double-click the  on the desktop, or click the Windows [start] menu and select [All Programs] ▶ [Canon Utilities] ▶ [ZoomBrowser EX] and [ZoomBrowser EX]. To exit ZoomBrowser EX, click  or select [Exit] from the [File] menu.



1 Task Area

[Acquire & Camera Settings]: Use this to display the Camera Control window to download images, to print still images without having them downloaded to the computer and to configure the camcorder settings.

[View & Classify]: Use this to view and organize images.


[Edit]: Use this to edit images.

[Export]: Use this to change the data for still images and save them as new files, extract still images from movies, back up to CD-R/RW, or export shooting properties to a text file.

[Print]: Use this to print downloaded still images.

[Internet]: Use this to attach selected still images to E-mail messages.

2 Folders Area

You can select a folder to be displayed in the Browser Area.  indicates that newly downloaded images are in the folder.

Selecting the [Favorite Folders] tab shows only the folders that are registered as Favorites. To register folders as Favorites, follow the instructions below.

When the [All Folders] tab is selected:



Select a folder and click [Add to Favorites].

When the [Favorite Folders] tab is selected:

Click [Add] and select a folder.

To remove the registered folder, select the folder, and click [Remove].

3 Browser Area

This area displays the images contained in the selected folder. If you place the cursor over a thumbnail in the browser area,  will be displayed at the upper right corner. Clicking  skips over folders to zoom in directly on the intended folder.



- Clicking on 2 images while holding down the [Shift] key selects also all images between the 2 images.
- Clicking on different images while holding down the [Ctrl] key selects multiple images.

4 Browser Area Tool Bar

The menu items vary depending on the View Mode.

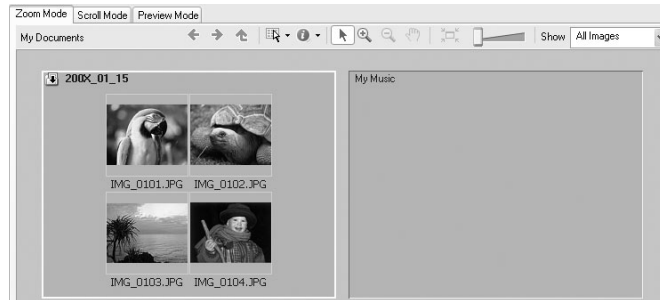


1	Previous/Next	Displays the previous/next image in the current folder.
2	Up	Displays the folder in the upper tiers of the hierarchy.
3	Select	Allows you to select all images and deselects images.
4	Information	Allows you to select the information to be shown. You can also hide the pop-up window by clearing the checkmark. The pop-up window appears when you move the mouse over a thumbnail.
5	Pan	Changes the area displayed when you zoom in on a folder or image in the Browser Area and drags the thumbnail list.
6	Restore Display Size	Changes the size of the thumbnail list to fit the window.
7	Zoom Slider	Enlarges/Reduces the thumbnails in the Browser Area.
8	Show	Allows you to select displayed images according to the star rating.

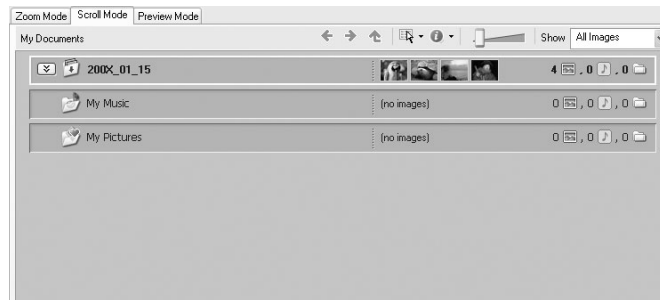
5 View Mode

You can select the view mode of images in the Browser Area.

[Zoom Mode]: The images in the selected folder are shown as thumbnails.



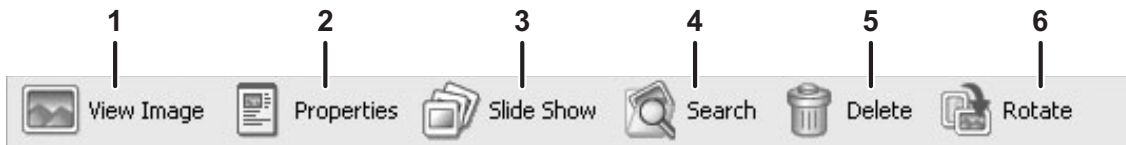
[Scroll Mode]: Thumbnails of the images are displayed next to the folder name. Clicking a folder displays enlarged images. Selecting [Preferences] from the [Tools] menu opens the [Preferences] window, on which you can select the hierarchy of folders.

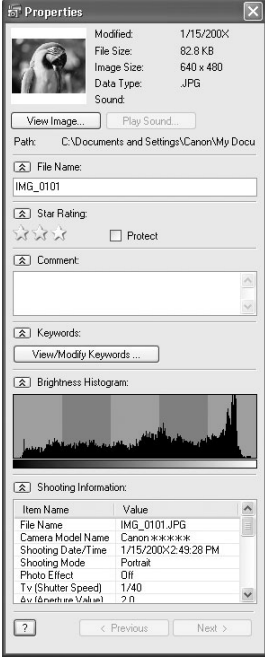



[Preview Mode]: A large image is displayed along with detailed information. You can change file name and comments. To display another image, click [Previous]/[Next] or select an image shown at the bottom of the window.



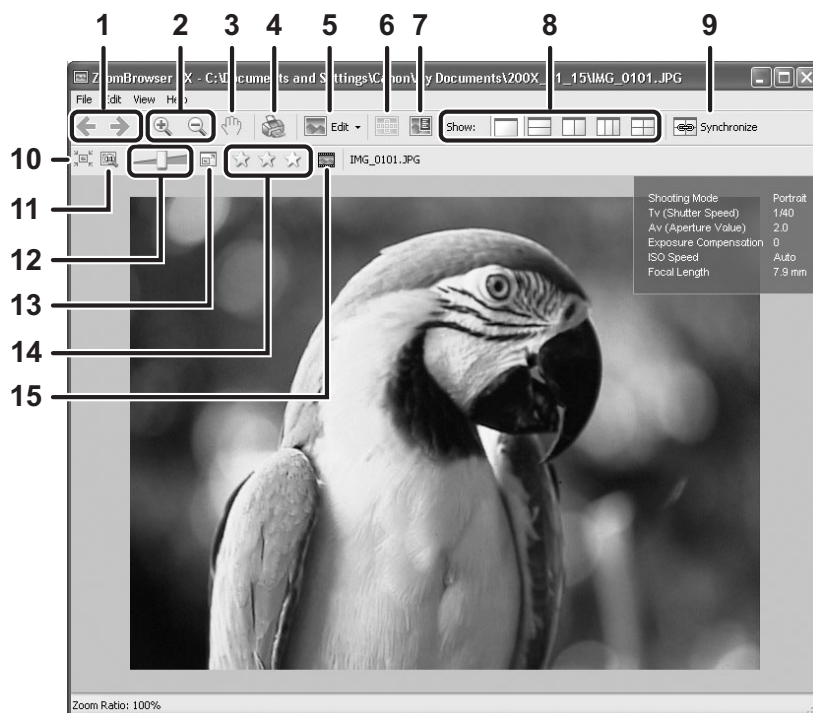
6 Application Tool Bar



1	View Image	Displays a selected image in the [Image Viewer] window.																
2	Properties	<p>Displays properties of the selected image. When you select a different image while the [Properties] window is open, the information switches to the one of the selected image.</p> <p>The [Properties] window cannot be displayed in [Preview Mode].</p>  <p>The screenshot shows a 'Properties' dialog box with the following sections:</p> <ul style="list-style-type: none"> Image Information: Modified: 1/15/2008, File Size: 82.8 KB, Image Size: 640 x 480, Data Type: JPG, Sound. Buttons: View Image..., Play Sound... Path: C:\Documents and Settings\Canon\My Documents File Name: IMG_0101 Star Rating: 5 stars, with a 'Protect' checkbox. Comment: A text input field. Keywords: A text input field and a 'View/Modify Keywords...' button. Brightness Histogram: A histogram showing the distribution of pixel brightness. Shooting Information: A table with columns 'Item Name' and 'Value'. <table border="1" data-bbox="582 1123 826 1272"> <thead> <tr> <th>Item Name</th> <th>Value</th> </tr> </thead> <tbody> <tr> <td>File Name</td> <td>IMG_0101.JPG</td> </tr> <tr> <td>Camera Model Name</td> <td>Canon *****</td> </tr> <tr> <td>Shooting Date/Time</td> <td>1/15/2008 2:49:28 PM</td> </tr> <tr> <td>Shooting Mode</td> <td>Portrait</td> </tr> <tr> <td>Photo Effect</td> <td>Off</td> </tr> <tr> <td>Tv (Shutter Speed)</td> <td>1/40</td> </tr> <tr> <td>Av (Aperture Value)</td> <td>2.8</td> </tr> </tbody> </table> 	Item Name	Value	File Name	IMG_0101.JPG	Camera Model Name	Canon *****	Shooting Date/Time	1/15/2008 2:49:28 PM	Shooting Mode	Portrait	Photo Effect	Off	Tv (Shutter Speed)	1/40	Av (Aperture Value)	2.8
Item Name	Value																	
File Name	IMG_0101.JPG																	
Camera Model Name	Canon *****																	
Shooting Date/Time	1/15/2008 2:49:28 PM																	
Shooting Mode	Portrait																	
Photo Effect	Off																	
Tv (Shutter Speed)	1/40																	
Av (Aperture Value)	2.8																	
3	Slide Show	Displays still images in a slide show.																
4	Search	Allows you to search for images ( 58).																
5	Delete	Deletes selected images.																
6	Rotate	Rotates selected still images. A movie cannot be rotated.																

[Image Viewer] Window

The [Image Viewer] window appears when you select an image and click [View Image] or double-click an image.




1	Previous/Next	Displays the previous/next image in the current folder.
2	Zoom In/Zoom Out	Enlarges/decreases an image.
3	Pan	When the image is larger than the window, you can move the image in the desired direction.
4	Print	Prints the selected still image. Refer to <i>[One Photo per Page Print]</i> (📖 46).
5	Edit	Allows you to perform the following operations: red-eye correction, auto correct, color and brightness correction, sharpness adjustment, trimming, inserting texts or registering external image editing applications.
6	Auto Focus Frame	This function cannot be used for the images recorded by the camcorder.
7	Shooting Information	The shooting information of the image will be displayed.
8	Show	Allows you to display multiple images at the same time.
9	Synchronize	Synchronizes the View functions across all displayed images.
10	Fit to Window	Matches the image size to the size of the Image Viewer Window.
11	Restore	Restores the standard display size.
12	Zoom Slider	Allows you to enlarge/decrease the displayed image.

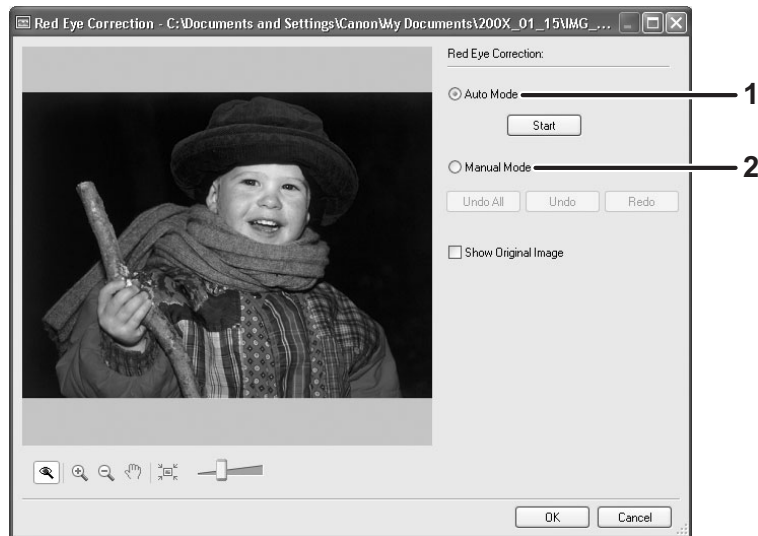
E

Windows

13	Show Image Full Screen	Displays an image in full screen size.
14	Change the Star Rating	Allows you to change the star rating.
15	Capturing Frames	Extracts still images from movies. (Windows XP only)


■ [Red Eye Correction] Window

Selecting [Red Eye Correction] from the [Edit] menu or the  icon allows you to correct the red eye effect on an image in the [Red Eye Correction] window.




1	Auto Mode	Clicking [Start] corrects the red eye effect automatically.
2	Manual Mode	Point the cursor on a red eye so that the area is highlighted green, and left-click the mouse.

■ [Auto Adjustment] Window

Selecting [Auto Adjustment] from the [Edit] menu, or clicking the  icon and selecting [Auto Adjustment] allows you to automatically correct the color balance of the still image.




■ [Color/Brightness Adjustment] Window

Selecting [Color/Brightness Adjustment] from the [Edit] menu, or clicking the  icon and selecting [Color/Brightness Adjustment] allows you to adjust the brightness, saturation, contrast, intensity levels, tone curve and RGB of the still image.




■ [Sharpness] Window

Selecting [Sharpness] from the [Edit] menu, or clicking the  icon and selecting [Sharpness] allows you to emphasize and clarify the outlines of people and objects.




■ [Trim Image] Window

Selecting [Trim] from the [Edit] menu or the  icon allows you to crop an image. Either drag the mouse on the image or specify the cropping area, and click [Trim Image].



■ [Insert Text] Window

Selecting [Insert Text] from the [Edit] menu, or clicking the  icon, and select [Insert Text] allows you to write text on still images.



E

Installing the Digital Video Software



- Be sure to install the Digital Video Software before connecting the camcorder to the computer.
- Users of Windows 2000 or Windows XP must first log in as an Administrator to install programs.



Windows XP Users:

Your digital video camcorder is equipped with the standard Picture Transfer Protocol (PTP). This protocol enables you to download images by simply connecting the camcorder to a computer with the USB cable (the software such as the [Scanner and Camera Wizard] starts automatically).

However, please note that there are several limitations to downloading images with this method. To avoid these problems, install ZoomBrowser EX to download images.

- It may take a few minutes, after connecting the camcorder, until you can download images.
- Images protected on the camcorder may lose this setting once they are downloaded to the computer.

1 Check a camcorder is not connected to the computer.

While a camcorder is connected to the computer, the software cannot be installed normally. If a camcorder is connected, detach the USB cable from the computer.

2 Close all programs that are running.

3 Set the DIGITAL VIDEO SOLUTION DISK in the computer's CD-ROM drive.

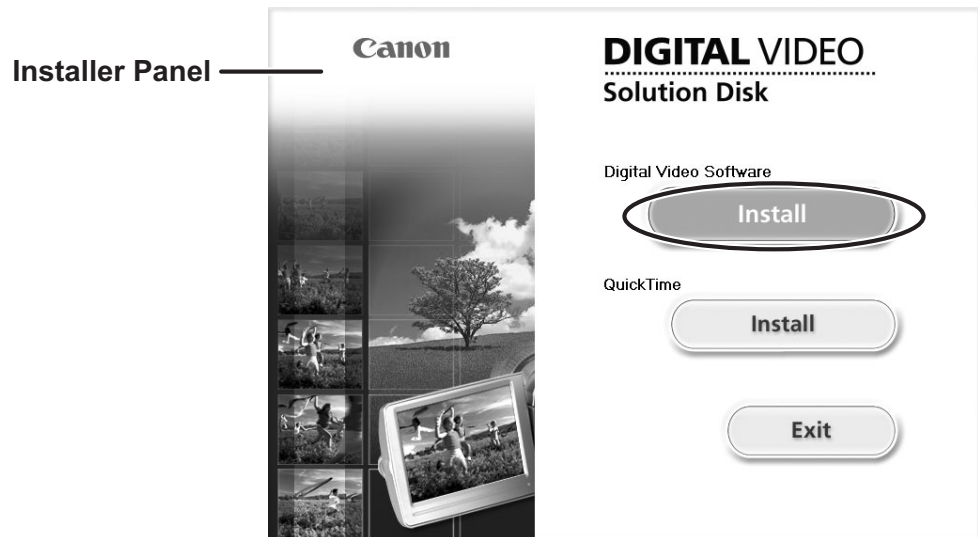
If the installer panel does not open automatically, use the following procedures to display it.

- Windows 98/Windows Me/Windows 2000:
 - 1) Double-click the [My Computer] icon.
 - 2) Right-click the CD-ROM icon and select [Open] from the displayed menu.
 - 3) Double-click the [SETUP.EXE] icon.
- Windows XP:
 - 1) Select [My Computer] from the [start] menu.
 - 2) Right-click the CD-ROM icon and select [Open] from the displayed menu.
 - 3) Double-click the [SETUP.EXE] icon.

Depending on the setting of your computer, the file extension “.EXE” may not appear.

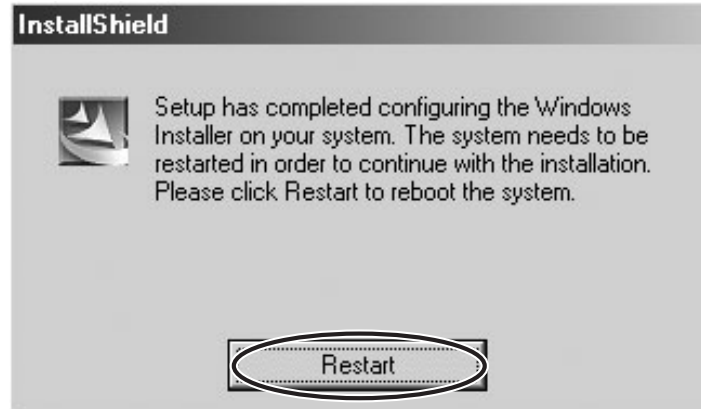
4 Select your language.

5 Click Digital Video Software [Install].



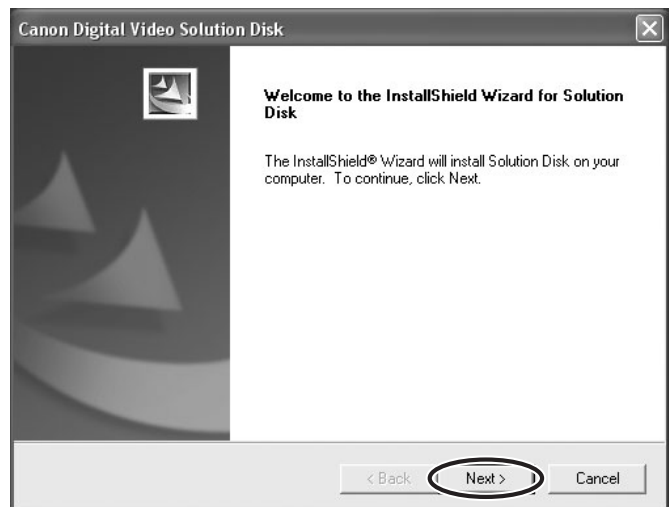
E

If the following dialog appears, click [Restart] to restart the computer. After restarting the computer, installation automatically continues.



Windows

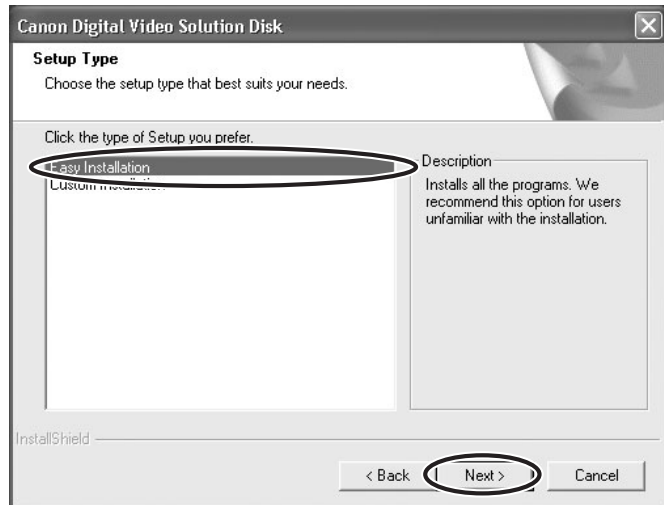
6 Click [Next].



7 Select [Easy Installation] and click [Next].

To install the software individually, select [Custom Installation]. When you select [Custom Installation], select a USB driver. (Windows XP: The USB driver supplied with the Windows operating system is used. You do not need to install a USB driver.)

- Windows 98/Windows 2000: Canon DV TWAIN Driver
- Windows Me: Canon DV WIA Driver

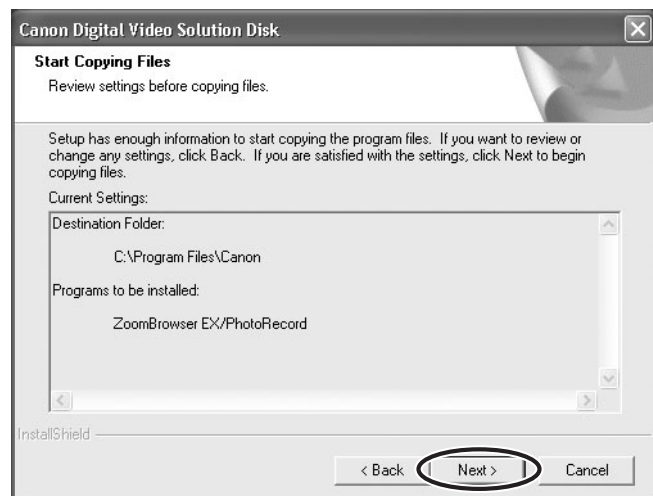


8 Select your country/region and click [Next].

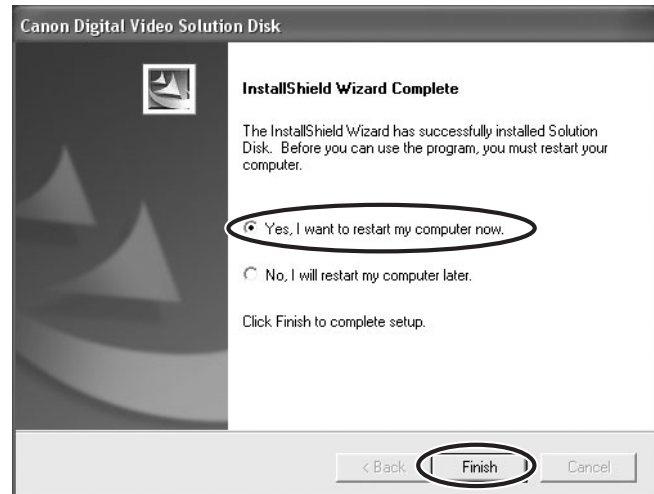
9 Read the license agreement and click [Yes].

10 Review the installation settings and click [Next].

- Installation starts.
- If the “Digital signature not found” message appears, click [Yes].



11 When installation is complete, select [Yes, I want to restart my computer now.] and click [Finish].



12 When the computer has restarted and the regular desktop screen is displayed, remove the DIGITAL VIDEO SOLUTION DISK from the CD-ROM drive.

When installation is complete, remove the DIGITAL VIDEO SOLUTION DISK before you connect the camcorder to the computer.



Windows 98/Windows Me/Windows 2000: At this point, the files for the TWAIN Driver or WIA Driver have only been copied to your computer. To download images via USB connection, finish installing the TWAIN Driver or the WIA Driver. For details, see step 4 (📖 26) in *Connecting the Camcorder to a Computer*.

Before Downloading Images

Connecting the Camcorder to a Computer



- Be sure to install the Digital Video Software before you connect the camcorder to the computer.
- Make sure the camcorder is being powered using the power adapter before connecting it to a computer.
- Connect the USB cable directly to one of the computer's main USB ports. The interface may not function correctly if the camcorder is connected via a USB hub.
- The connection may not operate correctly if you are using other USB devices, excluding USB mice or keyboards, at the same time. If this occurs, disconnect the other devices from the computer and try reconnecting the camcorder.
- Do not connect two or more camcorders to the computer. The camcorders may not operate normally.
- **Never allow the computer to go into standby (sleep) mode while a camcorder is connected via the USB interface.**



- Refer to your computer manual for the location of the computer's USB ports.
- See your camcorder instruction manual for connecting instructions.

1 Insert a memory card containing images into the camcorder.

2 Connect the power adapter to the camcorder.

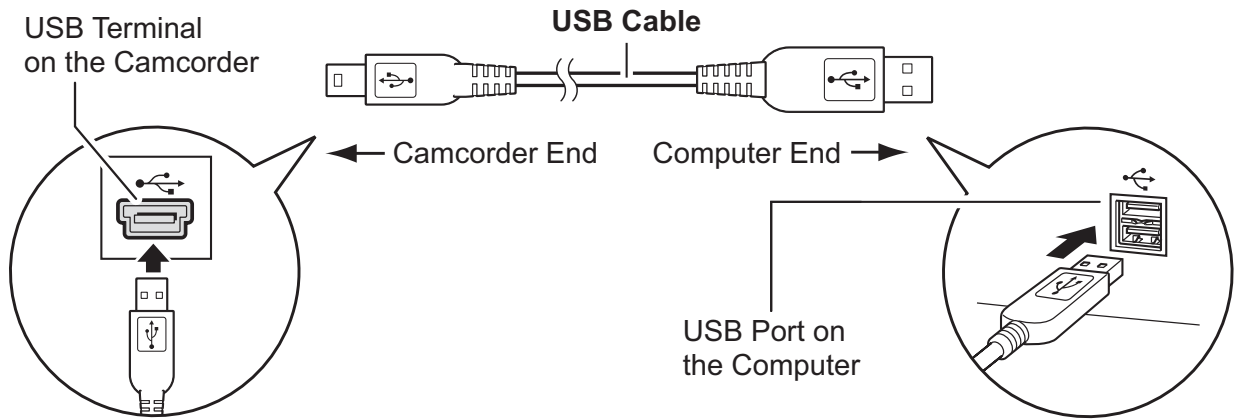
3 Turn the POWER switch to PLAY (VCR)/PLAY and move the TAPE/CARD switch to CARD.

Wait until the card access indicator stops flashing.

4 Attach the supplied USB cable to the computer's USB port and the camcorder's USB Terminal.

- **The first time you connect the camcorder to the computer:**
 - Installation of the DV TWAIN Driver (Windows 98/Windows 2000) or the DV WIA Driver (Windows Me) starts.
 - If the "Digital signature not found" message appears, click [Yes].
 - If you are prompted to restart the computer, restart the computer.
- Windows 98/Windows 2000/Windows XP: A window appears allowing you to select an application program to start.
- Windows Me: The Scanners and Cameras Wizard starts. Click [Cancel] to close the Wizard.

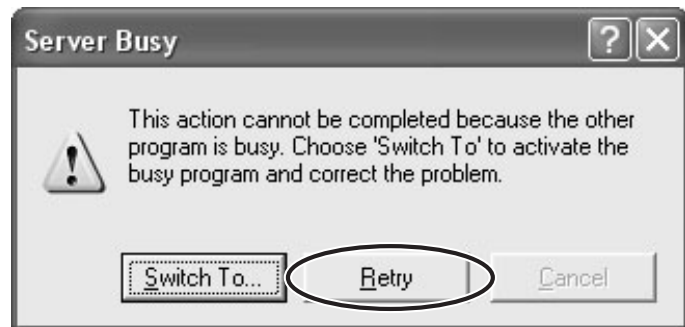
- For instructions on how to start ZoomBrowser EX and download images to the computer, see *Downloading Images (ZoomBrowser EX)* (📖 28).



Downloading Images (ZoomBrowser EX)



- Observe following precautions when the camcorder's card access indicator is flashing (the camcorder is reading or writing from or to the memory card). Failure to do so may cause memory card data to become corrupted.
 - Do not open the memory card cover, remove the memory card or detach the USB cable.
 - Do not turn off the camcorder or the computer.
 - Do not change the position of the POWER switch or the TAPE/CARD switch.
- Images recorded onto the memory card or downloaded to the hard disk are important original data files. Create a copy of the file first before working on it on your computer.
- **For Windows XP Users:**
 - Do not rotate the image in the [Windows Picture and Fax Viewer] or in the explorer view. The data for the original image will be changed and the image can no longer be displayed in ZoomBrowser EX or on the camcorder.
 - A movie file exceeding 210 MB cannot be downloaded.
 - If the Server Busy window appears when you connect the camcorder to the computer, click [Retry].



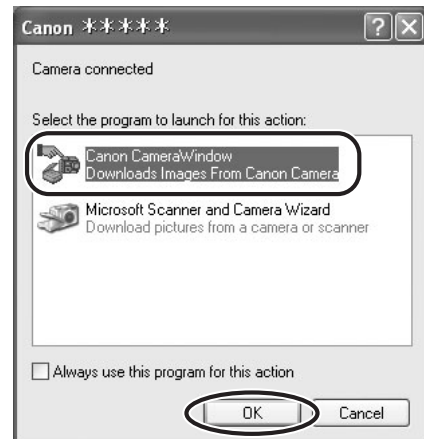
- You cannot connect the camcorder to a computer if the memory card contains more than 1800 images. In this case, use a card reader to download images.
 - For instructions on how to connect a card reader/writer, see *Using a Card Reader/Writer* (37).

Starting CameraWindow

1 Connect the camcorder to the computer (📖 26).

2 Select [Canon CameraWindow] and click [OK].

- If a camcorder and card reader are connected at the same time, a dialog appears allowing you to select the camcorder model. Confirm that [Canon Camera] or your camcorder model name is displayed and click [OK].



- The Camera Control window opens.
- If the window does not appear or if “PC CONNECT” does not appear on the camcorder screen, click the Windows [start] menu and select [All Programs], [Canon Utilities], [CameraWindow] and [CameraWindow].



- 🖨️ (print/share) button may not be supported by your camcorder.
- If the camcorder is already connected to the computer, you can start the CameraWindow and display the Camera Control window by clicking [Acquire & Camera Settings] followed by [Acquire Images] in the ZoomBrowser EX Main Window.
- The Remote shooting function is not supported by your camcorder.

E

Windows

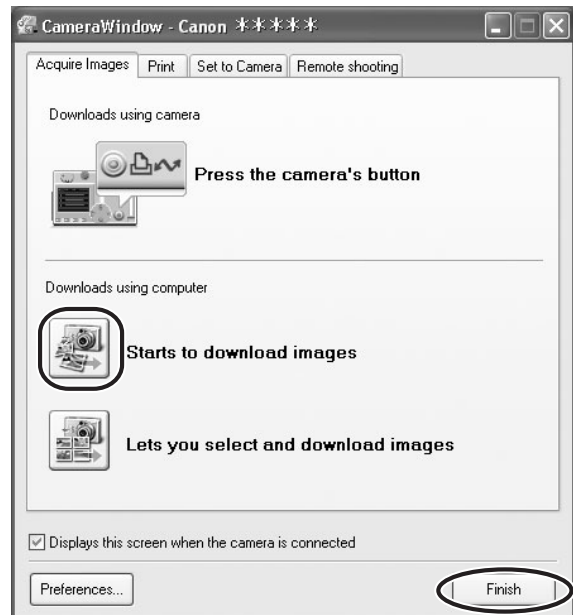
Using the Computer to Download Images

You can select a downloading method in the Camera Control window.

■ Auto-Downloading

1 Click [Starts to download images] in the Camera Control window.

- For instructions on how to set the Auto-download settings, see *Auto-Downloading Settings* (📖 31).
- Click [Finish] to close the Camera Control window after downloading images.



■ Auto-Downloading Settings

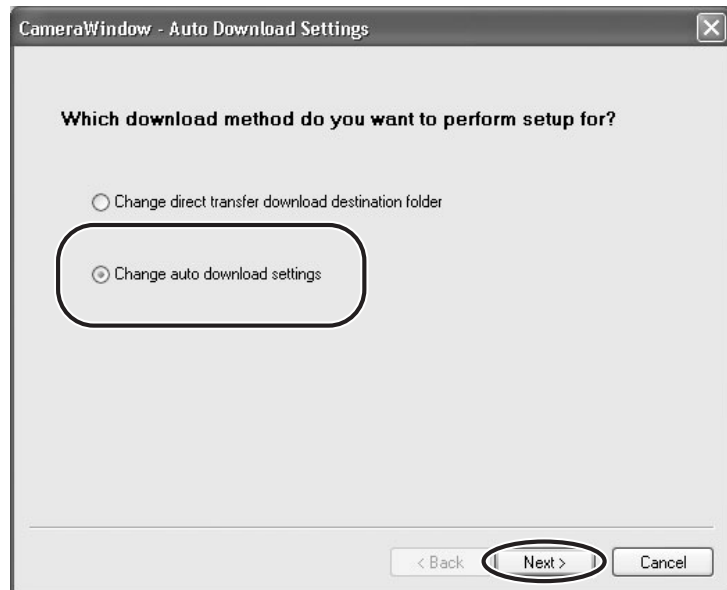
Select the setting for downloading images by operating your computer. You can change the image type and the destination folder.

- 1 In the Camera Control window, click the [Acquire Images] tab and click [Preferences].

E



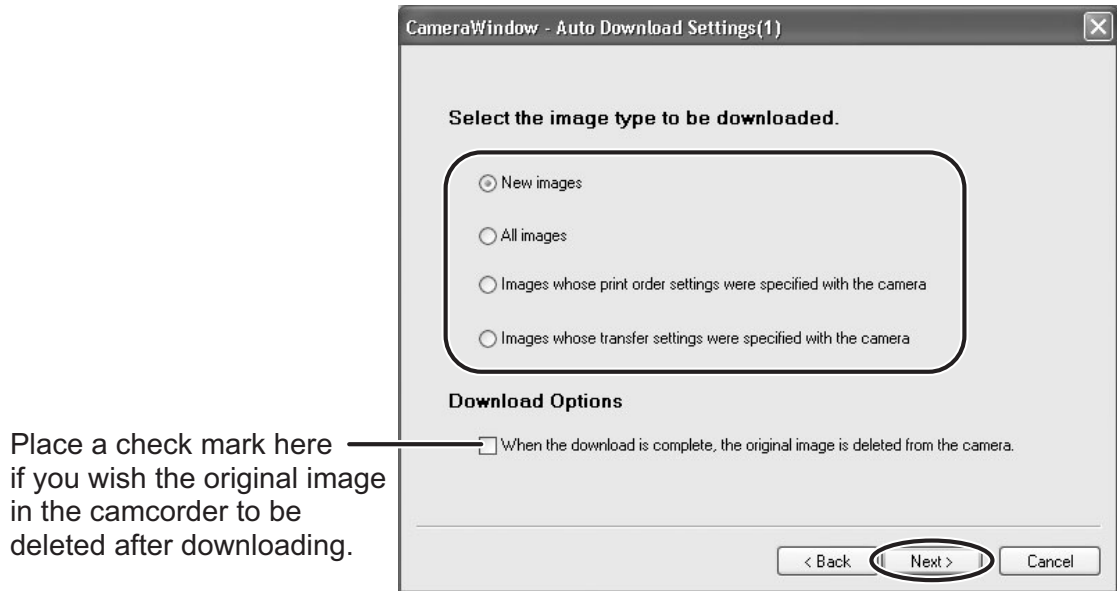
- 2 Select [Change auto download settings] and click [Next].



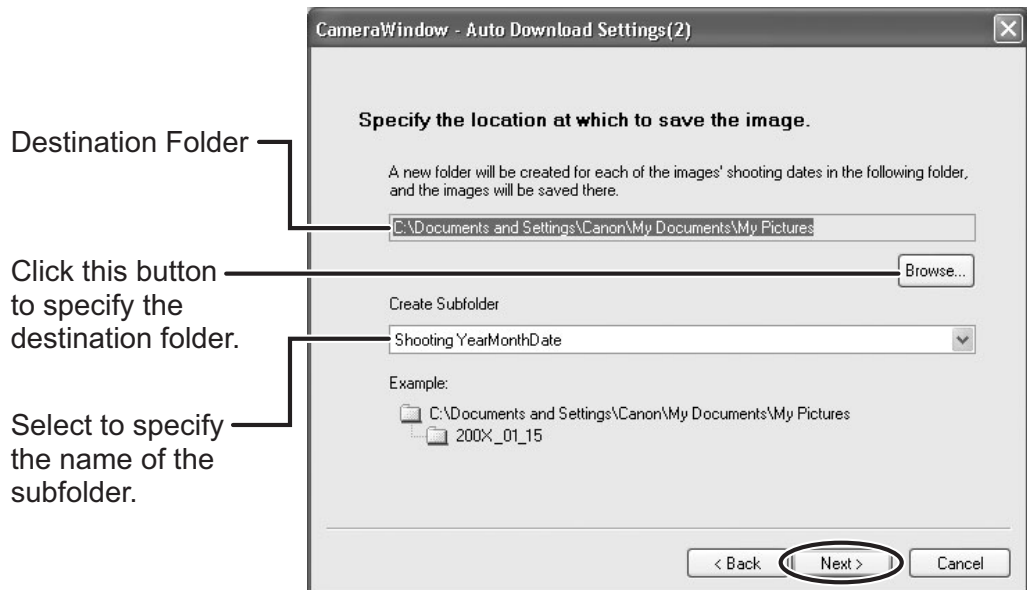
Windows

3 Select the image type to be downloaded and click [Next].

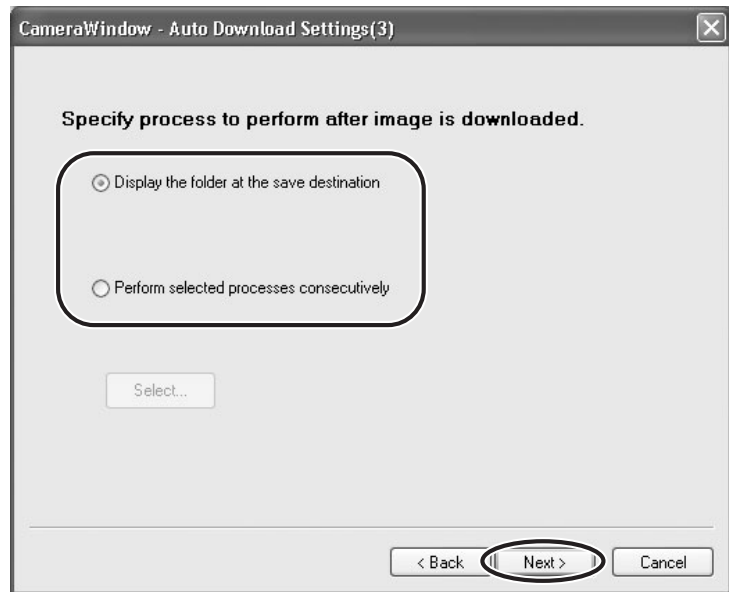
When the protect switch of the SD Memory Card is activated, those downloaded new images will not be marked as “already transferred” even having selected [New images] and downloaded.



4 Specify the destination folder settings and click [Next].

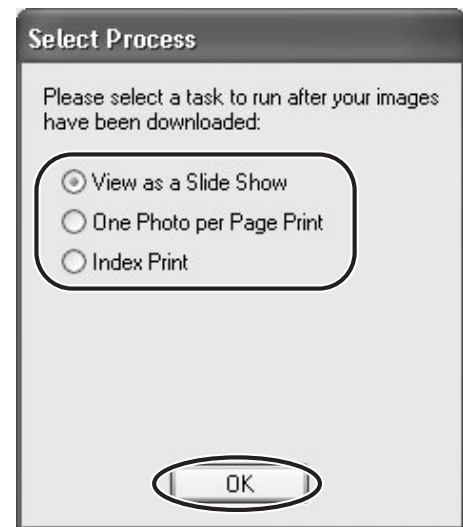


5 Specify a process to perform after the image is downloaded.



E

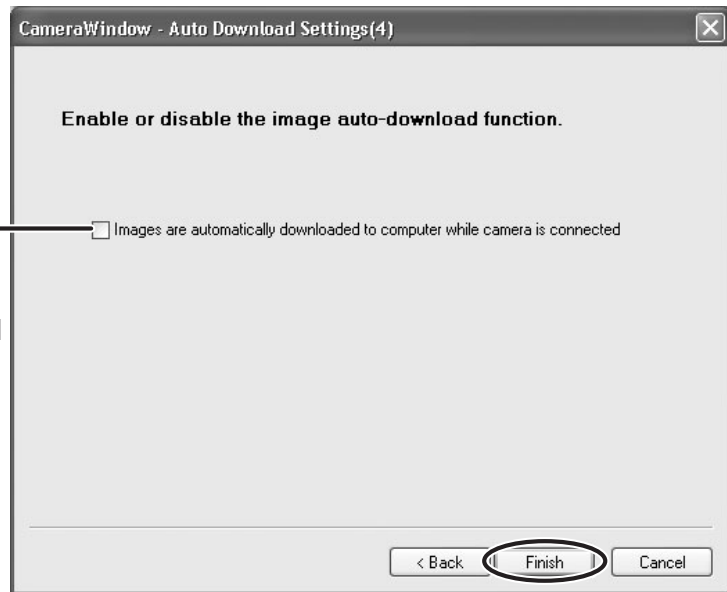
Below window will be displayed when you select [Perform selected processes consecutively] (You can redisplay the window by clicking [Select]). Select a process to perform after the image is downloaded, and click [OK].



Windows

6 Click [Finish].

Placing a check mark here makes images in the camcorder to be automatically downloaded when the camcorder is connected.



■ Downloading the Selected Images from the CameraWindow

1 Click [Lets you select and download images] in the Camera Control window.

The CameraWindow opens.

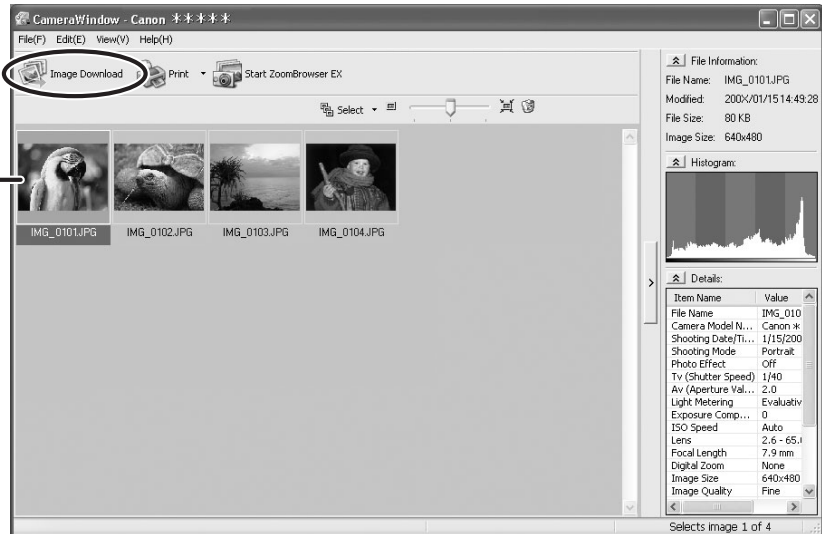


2 In the CameraWindow, select the image you wish to download and click [Image Download].

- Clicking on 2 images while holding down the [Shift] key selects also all images between the 2 images.
- Clicking on different images while holding down the [Ctrl] key selects multiple images.

E

A blue frame appears around the selected image.



3 Confirm the settings and click [Starts Download].

- ZoomBrowser EX starts, and the downloaded images appear in the Main Window.

Setting for the folder and the subfolder for downloaded images

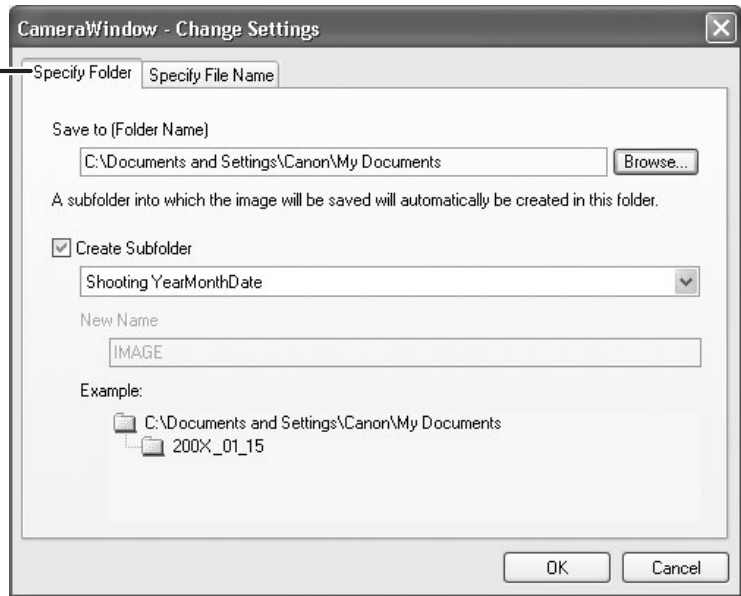
Settings for the file prefix and the consecutive numbers



Windows

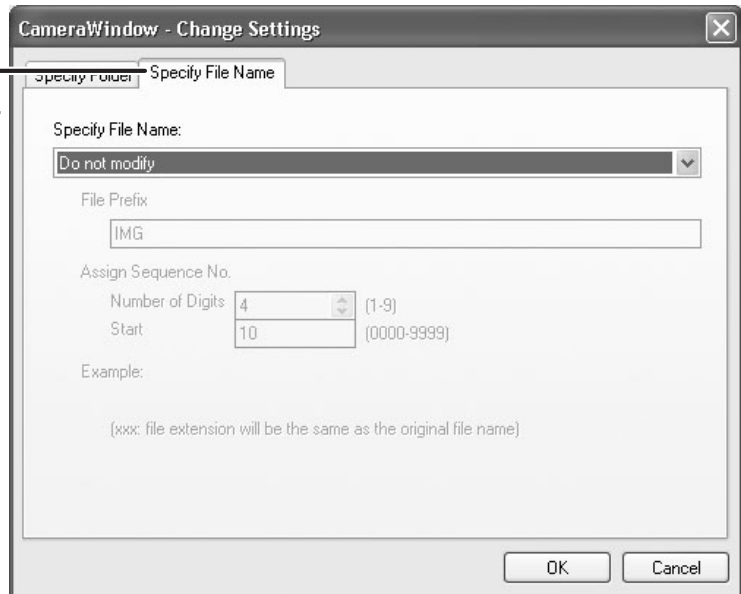
- To make changes, click [Change Settings].
[Specify Folder] Tab

Specify the settings of the folder and subfolder.



[Specify File Name] Tab

Specify the file name at which to save the images.



■ Using a Card Reader/Writer

The basic operations of ZoomBrowser EX are the same as when you connect the camcorder to the computer. Follow the procedure below to open the CameraWindow. For instructions on how to connect the card reader/writer, please refer to its manual.

1 Insert a memory card containing images recorded with the camcorder into the reader.

2 Windows 98/Windows Me/Windows 2000: Click the Windows [Start] menu, and select [Programs], [Canon Utilities], [CameraWindow] and [CameraWindow].

Windows XP: When a window appears allowing you to select an application program to start, select [View/Download Images using Canon CameraWindow] and click [OK].

The Camera Control window opens.

3 Select a downloading method.


- [Starts to download images]: The progress bar will be displayed and images will be downloaded to the computer, and ZoomBrowser EX starts. For instructions on how to set the Auto-download settings, see *Auto-Downloading Settings* (📖 31).
- [Lets you select and download images]: The CameraWindow opens, displaying the camcorder images as thumbnails (small images).



Using the Camcorder to Download Images (Direct Transfer Function)



If your camcorder supports the Direct Transfer Function, you can use the camcorder to download images.



If your camcorder is not equipped with the  button, operate the direct transfer menu using the P.SET button. For details, please refer to the instruction manual of your camcorder.

■ Direct Transfer

1 Select a transfer option on the camcorder screen and press the button.

- See your camcorder instruction manual for how to set and operate the camcorder to transfer images.
- For instructions on how to change the destination folder and the folder name, see step 3 ( 32) in *Auto-Downloading Settings*.
- The  button cannot be used when it is not lighted.
- You can set the action that is carried out for direct transfer. Right-click the [CameraWindow(Launcher)] icon on the taskbar and select an action from the displayed menu.
 - [Show image(s) in fullscreen mode]: Displays downloaded images in full screen mode.
 - [Launch ZoomBrowser EX]: Starts ZoomBrowser EX after downloading the images.
 - [Show Window]: The Camera Control window appears when you connect the camcorder to the computer.

✓ Show image(s) in fullscreen mode

✓ Launch ZoomBrowser EX

✓ Show Window

About CameraWindow(Launcher)...

Exit

2 Press the button on the camcorder.

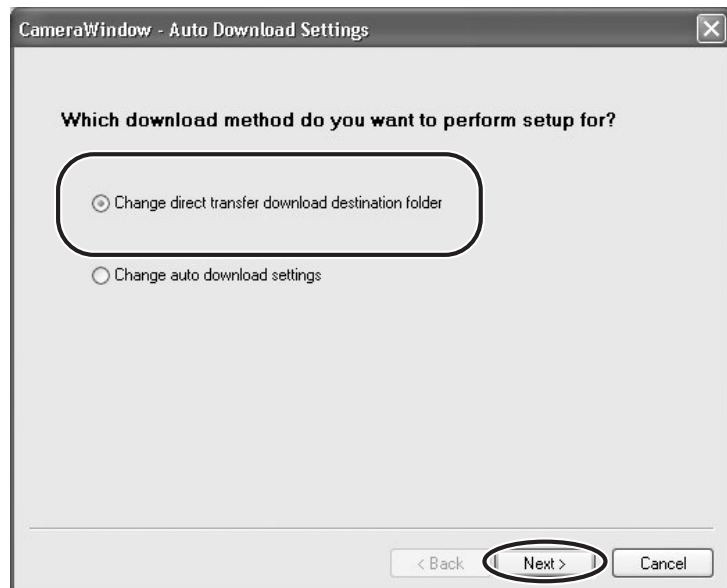
■ Setting the Direct Transfer Download Destination Folder

- 1 In the Camera Control window, click the [Acquire Images] tab and click [Preferences].



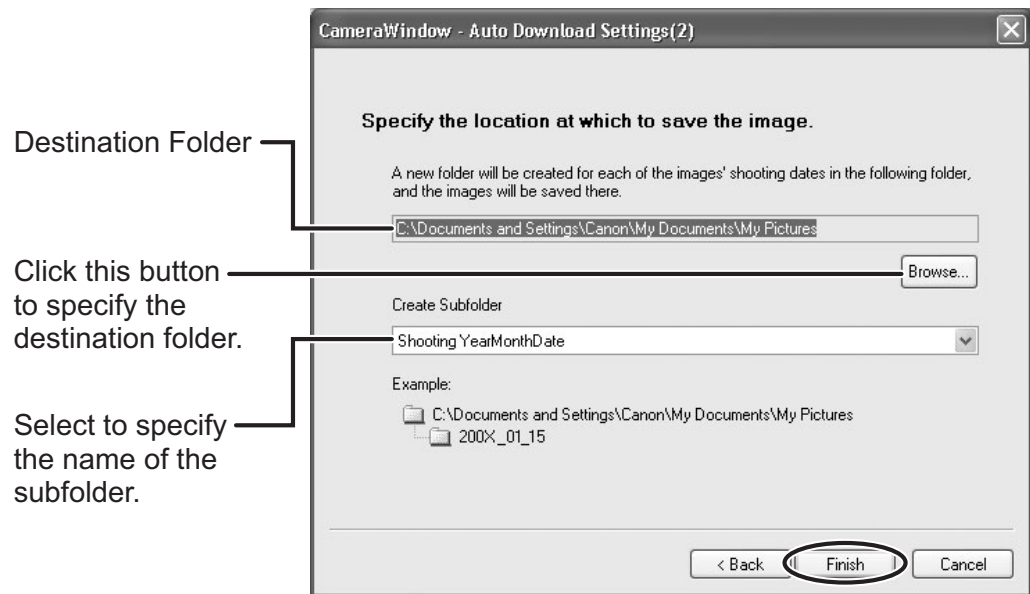
E

- 2 Select [Change direct transfer download destination folder] and click [Next].



Windows

3 Specify the destination folder settings and click [Finish].



Printing Still Images

Printing Still Images Recorded on the Memory Card

E

You can select one of the following 4 methods to print still images in the card without downloading them to the computer.

- [Print All Photos]
 - Prints all still images recorded on a memory card in the connected camcorder or in a card reader/writer one image per page.
- [Print Contact Sheet with All Photos]
 - Prints all still images recorded on a memory card in the connected camcorder or in a card reader/writer in an index (rows of images on one page).
- [Print according to DPOF settings]
 - Prints according to the DPOF print settings set by the camcorder.
- [Select an image and print]
 - A list of the still images recorded on a memory card in the connected camcorder or in a card reader/writer will be displayed, and you can select images you wish to print.

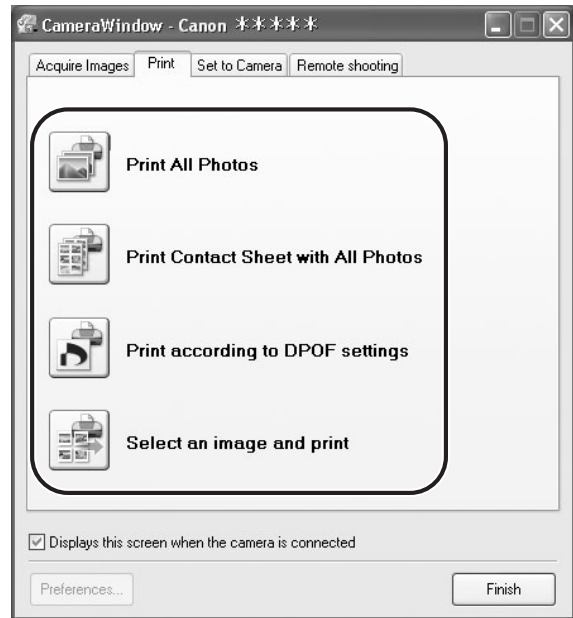
1 Connect the camcorder to the computer. (📖 26)

2 Click the [Print] tab in the Camera Control window.



Windows

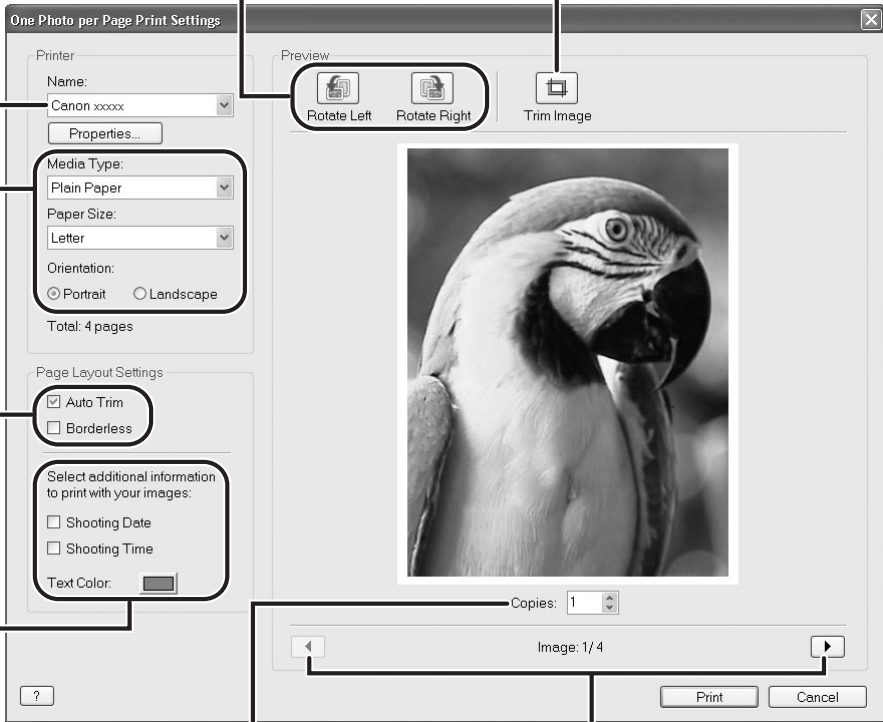
3 Click one of the 4 printing methods.



4 Specify the print settings and click [Print].

The window varies depending on the selected printing method in step 3.

When you have selected [Print All Photos]:



The screenshot shows the 'One Photo per Page Print Settings' dialog box. It is divided into several sections: 'Printer' (Name: Canon xxxxxx, Properties...), 'Media Type' (Plain Paper, Paper Size: Letter, Orientation: Portrait/Landscape), 'Page Layout Settings' (Auto Trim checked, Borderless unchecked), and 'Select additional information to print with your images' (Shooting Date, Shooting Time, Text Color). A 'Preview' section shows a parrot image with 'Rotate Left', 'Rotate Right', and 'Trim Image' buttons. At the bottom, there is a 'Copies' spinner (set to 1), a 'Image: 1/4' indicator with navigation arrows, and 'Print' and 'Cancel' buttons.

Rotates still images. Click this to use the trimming function (crops a portion of the still image).

Selects the printer.

Sets the paper size and orientation.

Sets the auto trim (crops image edges according to the page proportions) or borderless print settings.

Sets the shooting date/time imprint and color settings.

Sets the number of print copies.

Click this button to switch between still images if multiple images are selected.

E

Windows



When you have selected [Print Contact Sheet with All Photos]:

Rotates still images.

Click this to use the trimming function (crops a portion of the still image).

Selects the printer.

Sets the paper size and orientation.

Sets the number of print copies.

Sets the number of rows and columns.

Sets the print settings for shooting information, comments, headers, footers and page numbers.

Click these buttons to switch between pages.

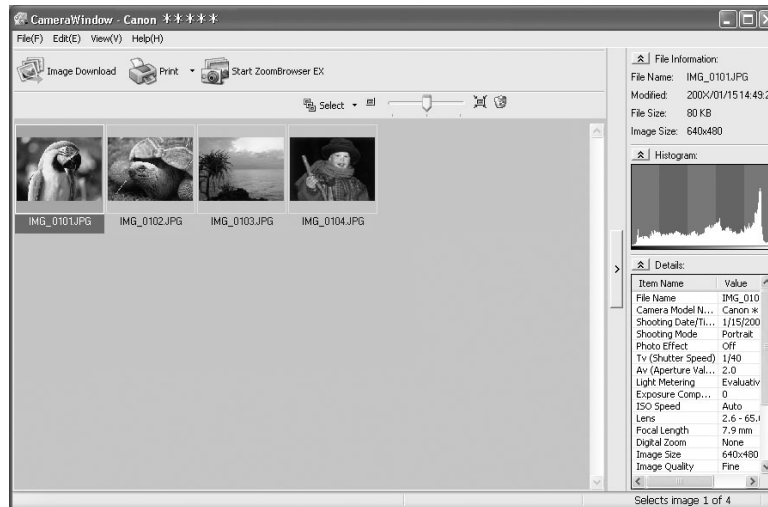
The screenshot shows the 'Index Print Settings' dialog box. On the left, there are sections for 'Printer' (Name: Canon xxxxxx), 'Media Type' (Plain Paper), 'Paper Size' (Letter), 'Orientation' (Portrait selected), 'Copies' (1), 'Page Layout Settings' (Columns: 3, Rows: 3), and 'Shooting Information' (checked) and 'Header/Footer' (unchecked). On the right, there is a 'Preview' area showing a grid of photo thumbnails. Above the preview are buttons for 'Rotate Left', 'Rotate Right', and 'Trim Image'. At the bottom right are 'Print' and 'Cancel' buttons. A 'Page: 1/1' indicator is at the bottom center. A '?' button is at the bottom left.

When you have selected [Print according to DPOF settings]:

- The selected still images will be printed according to the number of copies set with the camcorder. The same window described in the previous section *When you have selected [Print All Photos]*: (📖 43) will be displayed.

When you have selected [Select an image and print]:

- If you selected [Select an image and print], the following window will be displayed. Select still images you wish to print, and click [Print]. If you selected [Contact Sheet Print], the same window described in the previous section *When you have selected [Print Contact Sheet with All Photos]:* (📖 44) will be displayed. If you selected [One Photo Per Page Print], the same window described in the previous section *When you have selected [Print All Photos]:* (📖 43) will be displayed instead. Set the print settings and print the still images.



Printing Still Images Downloaded to the Computer

You can select one of the following 3 methods to print still images downloaded to the computer.

- [One Photo per Page Print]
 - Prints one still image per page.
- [Index Print]
 - Prints a selection of multiple still images in columns and rows in an index form.
- [Layout Print]
 - Allows you to lay out the selected still images in special arrangements and add texts and decorations, printing them as one page in a fancy album.



You can select the program to use for printing by clicking [Print] in the Main Window and selecting [Print Using Other Software].

■ [One Photo per Page Print]

1 Click [Print] in the Main Window and click [One Photo per Page Print].



2 Select still images you wish to print and click [Printer and Layout Settings].



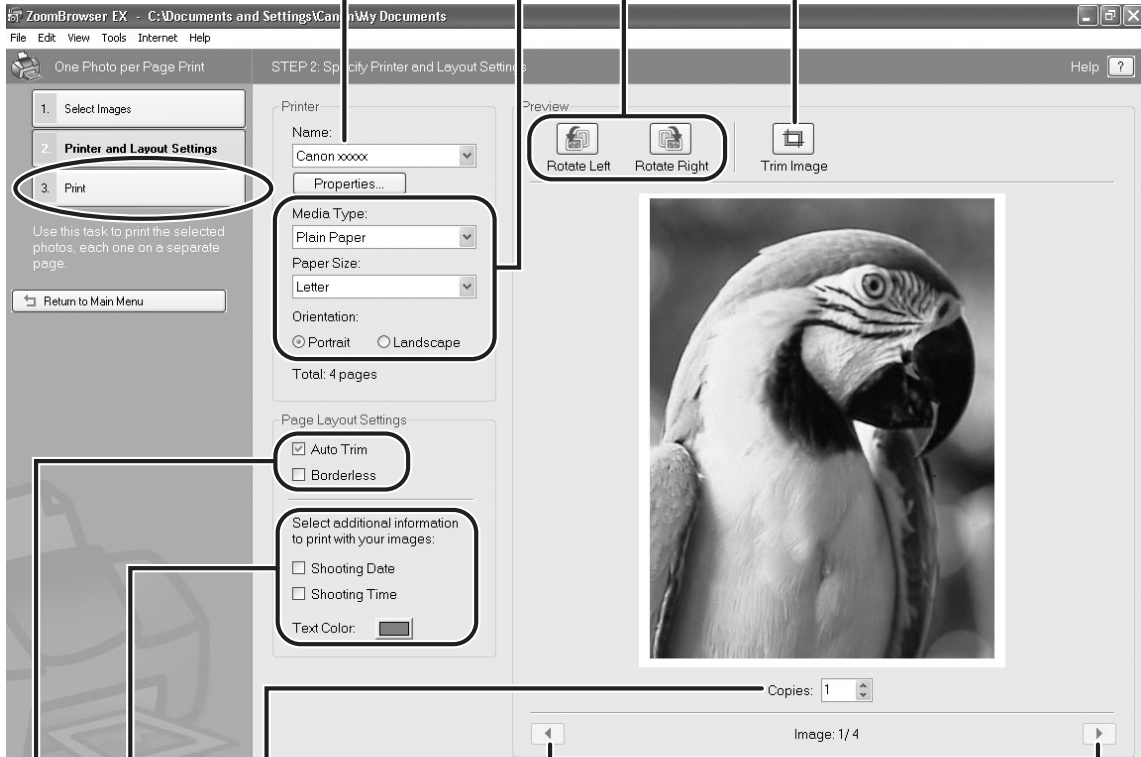
3 Specify the print settings and click [Print].

Sets the paper size and orientation.

Selects the printer.

Rotates still images.

Click this to use the trimming function (crops a portion of the still image).



Click this button to switch between still images if multiple images are selected.

Sets the number of print copies of the displayed image.

Sets the shooting date/time imprint and color settings.

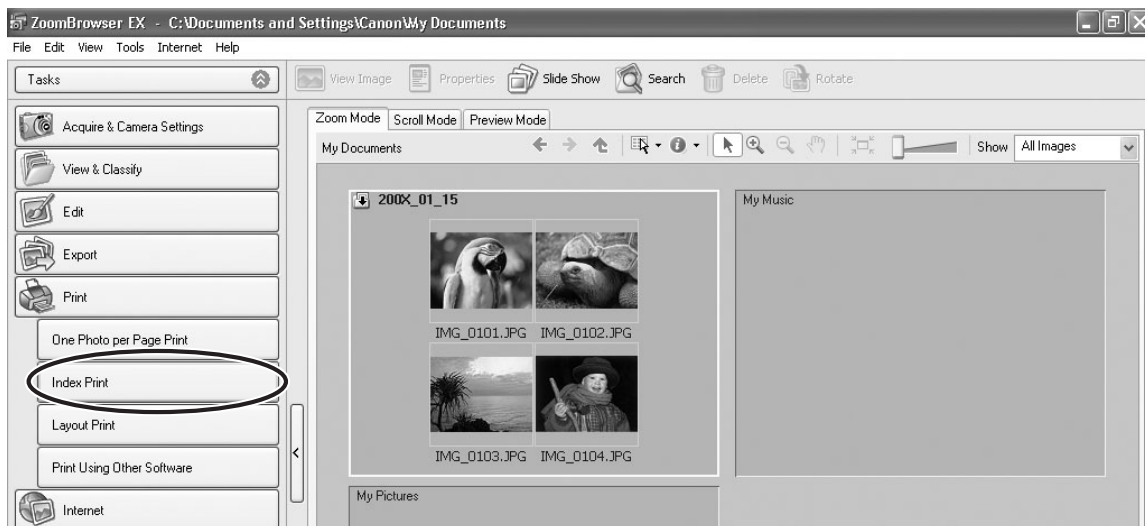
Sets the auto trim (crops image edges according to the page proportions) or borderless print settings.

E

Windows

■ [Index Print]

1 Click [Print] in the Main Window and click [Index Print].



2 Select the still images you wish to print and click [Printer and Layout Settings].



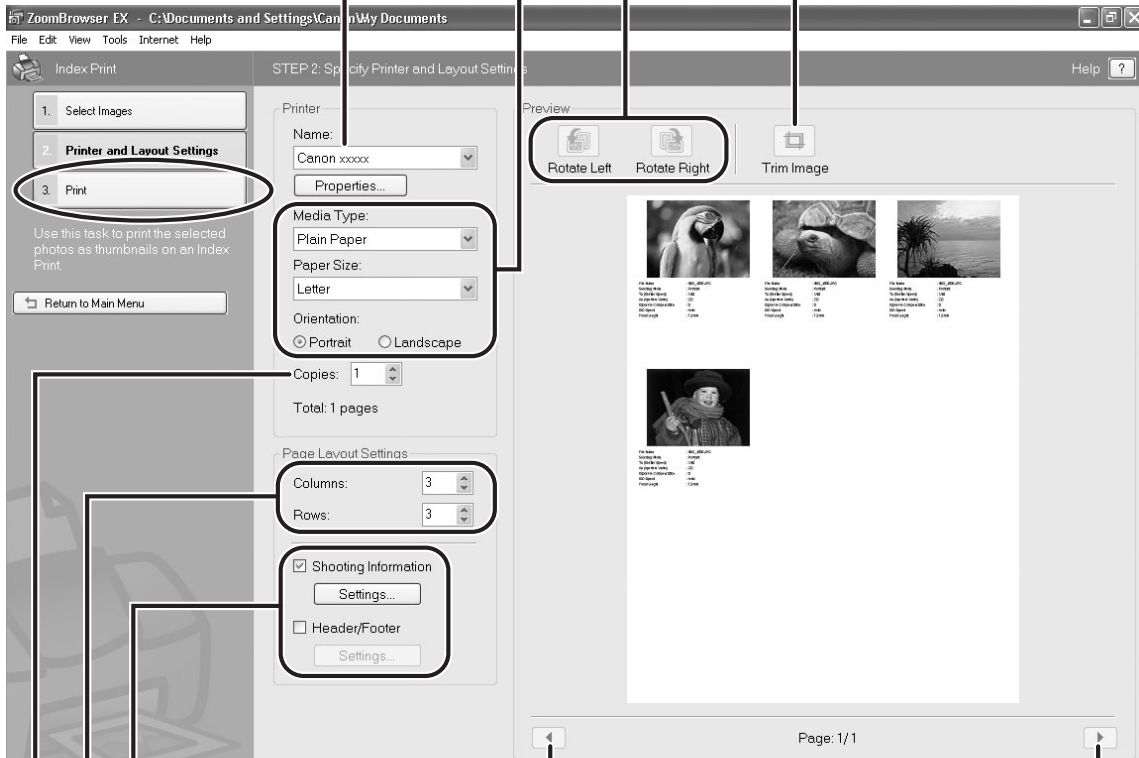
3 Specify the print settings and click [Print].

Sets the paper size and orientation.

Rotates still images.

Selects the printer.

Click this to use the trimming function (crops a portion of the still image).



Click these buttons to switch between pages.

Sets the print settings for shooting information, comments, headers, footers and page numbers.

Sets the number of rows and columns.

Sets the number of print copies of the contact sheets.

E

Windows

■ [Layout Print]

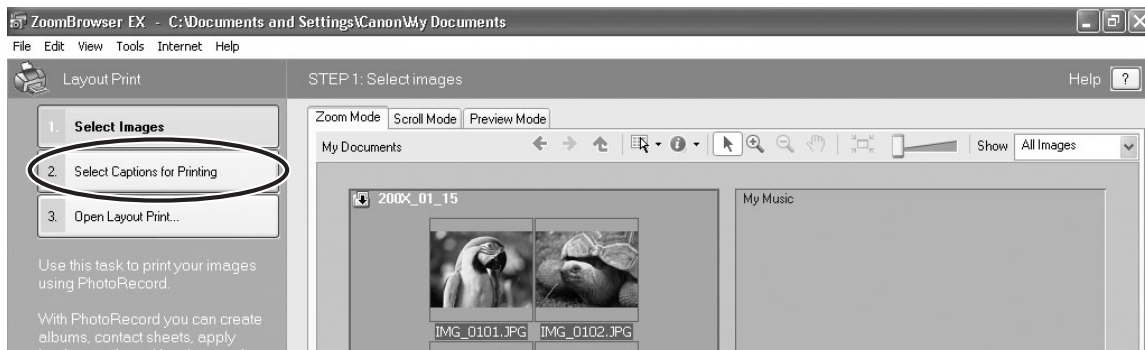
A program called PhotoRecord is used to print under the layout print method.

- Please refer to the PhotoRecord Help menu for more details.

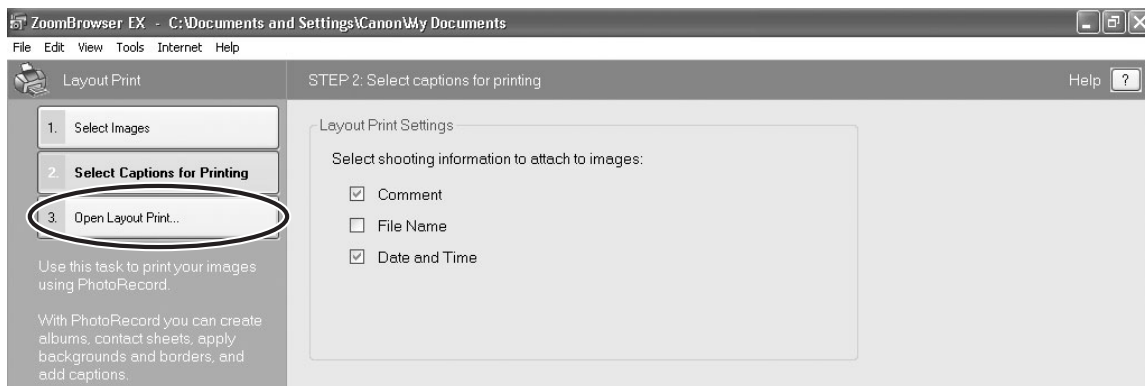
1 Click [Print] in the Main Window and click [Layout Print].



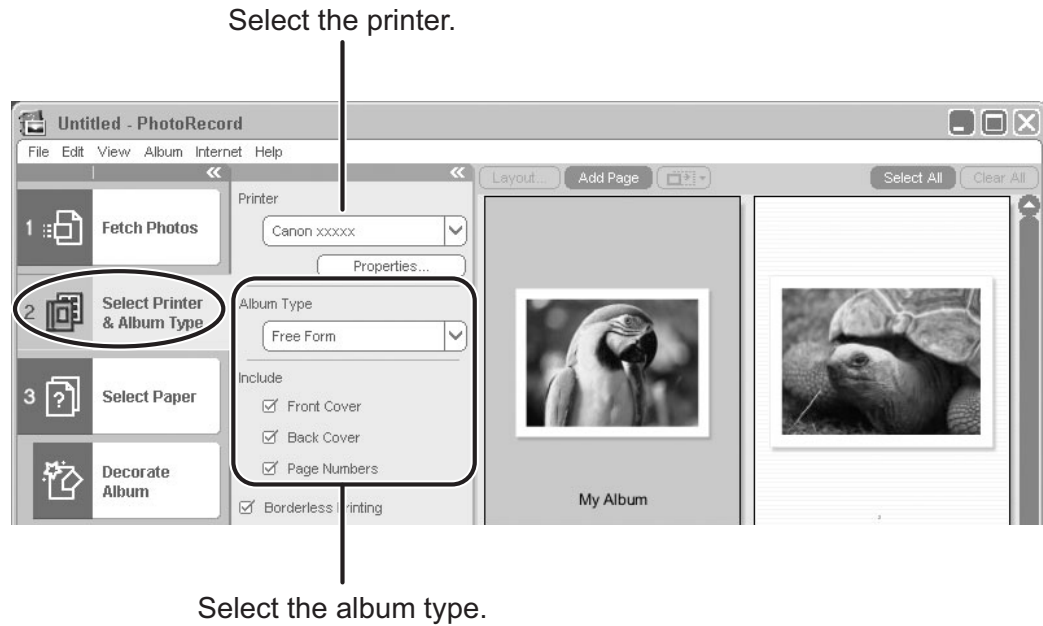
2 Select still images you wish to print and click [Select Captions for Printing].



3 Select the image information you wish to include in the print by placing a check mark and click [Open Layout Print].

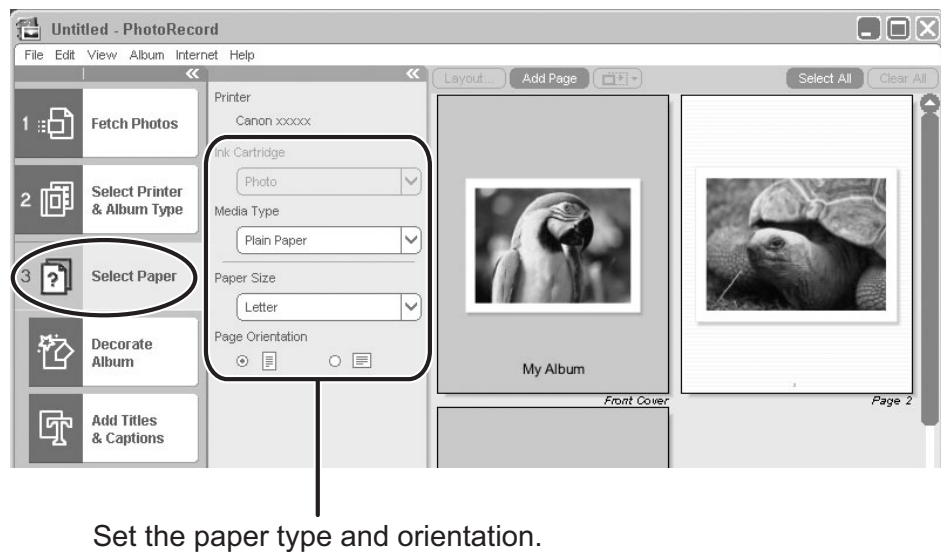


4 Click [2 Select Printer & Album Type] and select a printer and album type.



5 Click [3 Select Paper] and select the media type, paper size and page orientation.

- If you click [Decorate Album], you can change the theme (a consistent design for background, photo frames and text frames), or set the design elements individually. When you set the design elements individually, make sure to select the target page.
- If you click [Add Titles & Captions], you can add titles and text, and change font, font size, justification and color. Make sure to select the target page when performing these changes.



6 Click [4 Print], confirm the number of copies and other print settings, and click [Print].

Printing starts.



PhotoRecord automatically performs image correction for images shot with Exif 2.2 compatible camcorders and even other images, yielding high-quality prints.

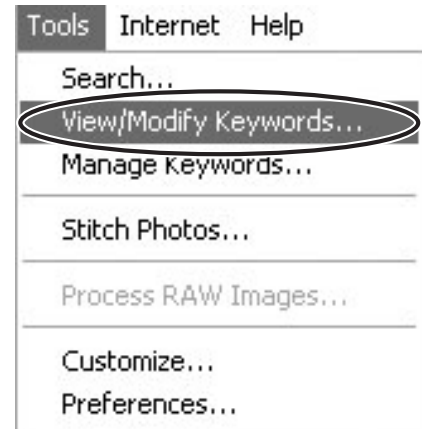
Organizing Images

Applying Star Ratings and Keywords

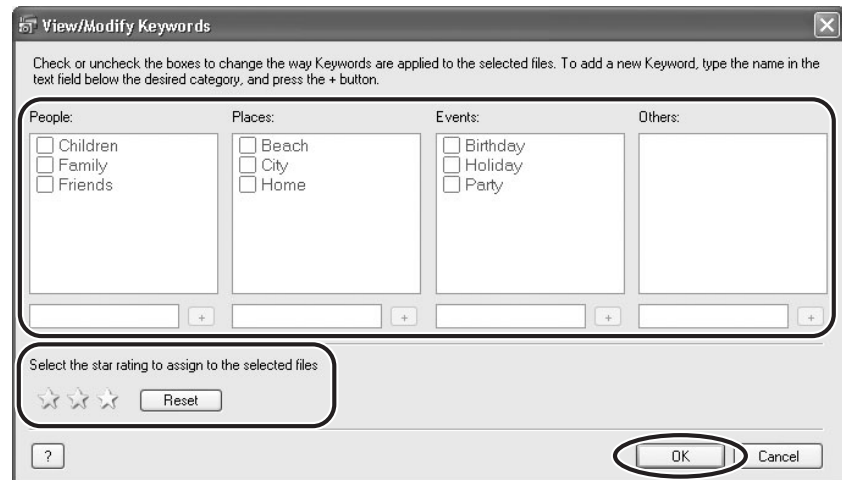
E

This task allows you to apply ratings to your images from one star to three stars. The Star Rating can be used as one of the search conditions, or for the selection of images to be displayed in the Browser Window. The keyword can be used as one of the search conditions.

- 1 Select the image to which you wish to apply the Star Rating or Keyword, and select [View/Modify Keywords] from the [Tools] menu.**



- 2 Place a check mark next to the keyword you wish to apply, or click on the stars for rating.**



Windows

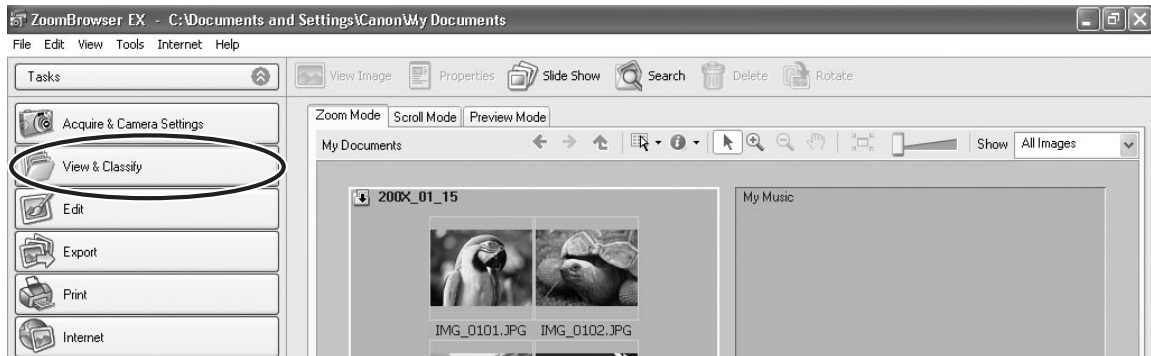


- The default setting of the Star Rating is two stars.
- You can display images according to Star Rating by selecting [Filter by Star Rating] from the [View] menu.
- You can add and delete keywords, or change the keyword list in the [Manage Keywords] window by selecting [Manage Keywords] from the [Tools] menu.

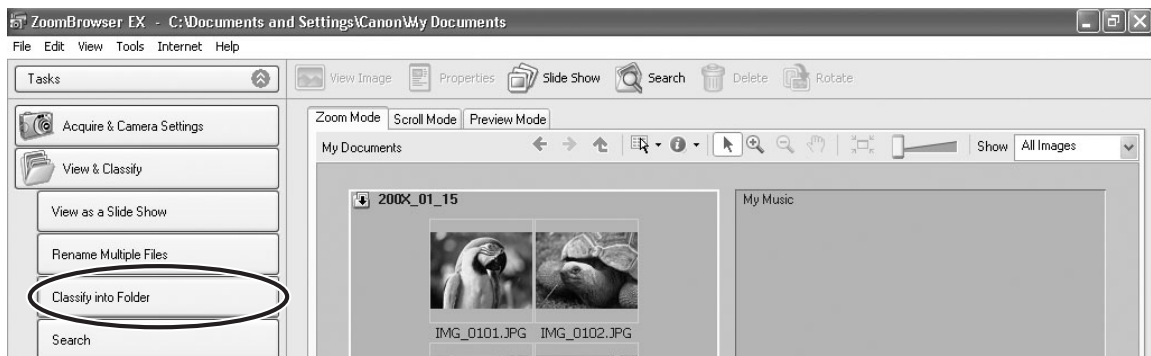
Classifying the Images

This task allows you to classify selected images according to the shooting date.

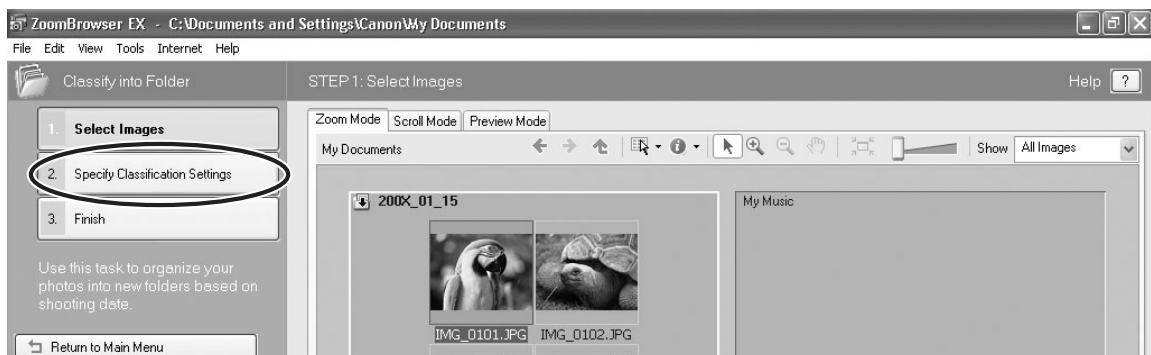
1 Click [View & Classify] in the Main Window.



2 Click [Classify into Folder].

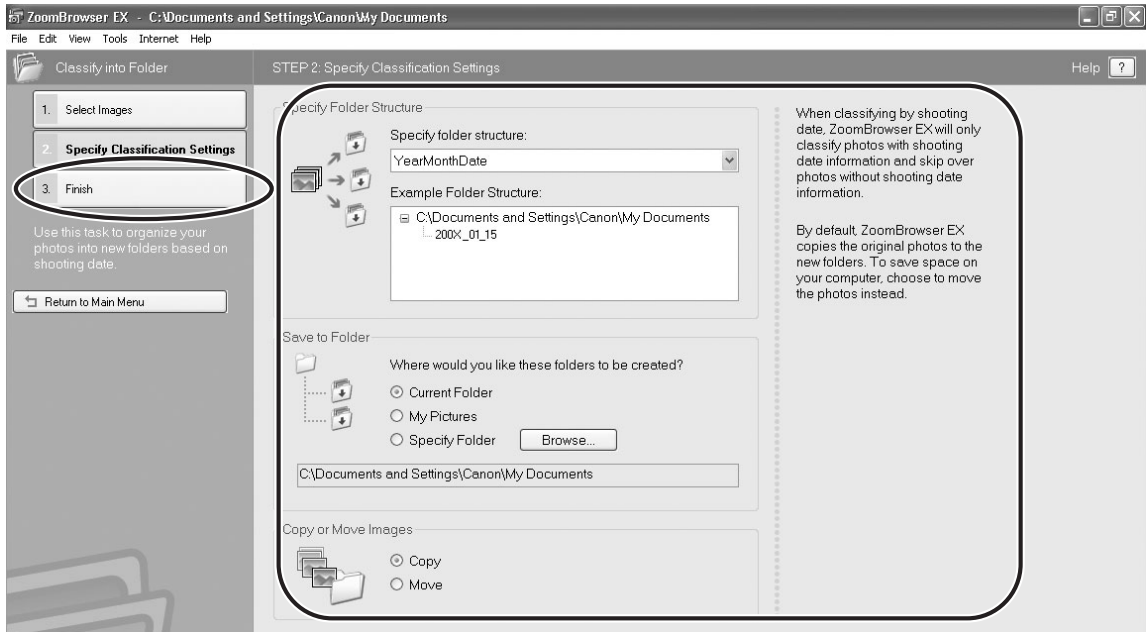


3 Select the images you wish to classify and click [Specify Classification Settings].



4 Specify the folder structure and the saving folder and click [Finish].

The selected images are classified into the specified folder.



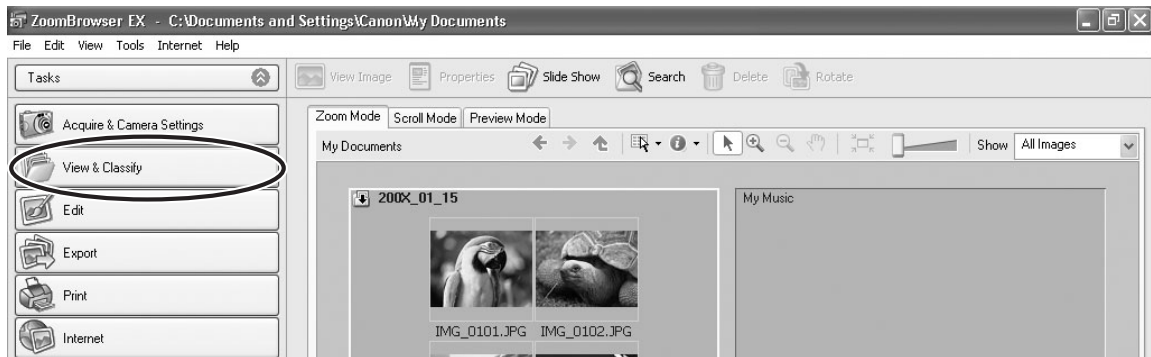
E

Windows

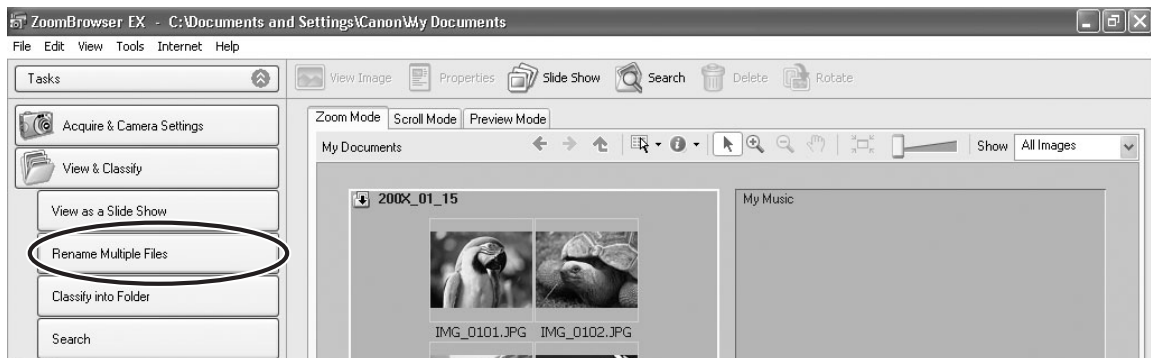
Renaming Multiple Files

This task allows you to rename multiple files at the same time, or to rename and copy multiple files.

1 Click [View & Classify] in the Main Window.



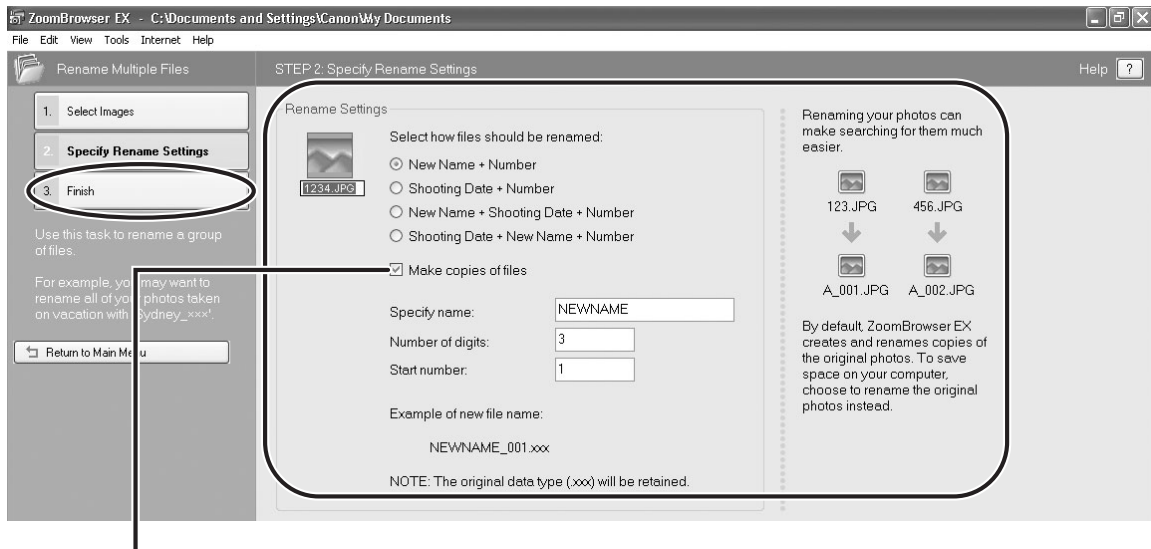
2 Click [Rename Multiple Files].



3 Select the images you wish to rename and click [Specify Rename Settings].



4 Specify the settings and click [Finish].



Placing a check mark here makes copies of images with new names. The name of the original images will not be changed.



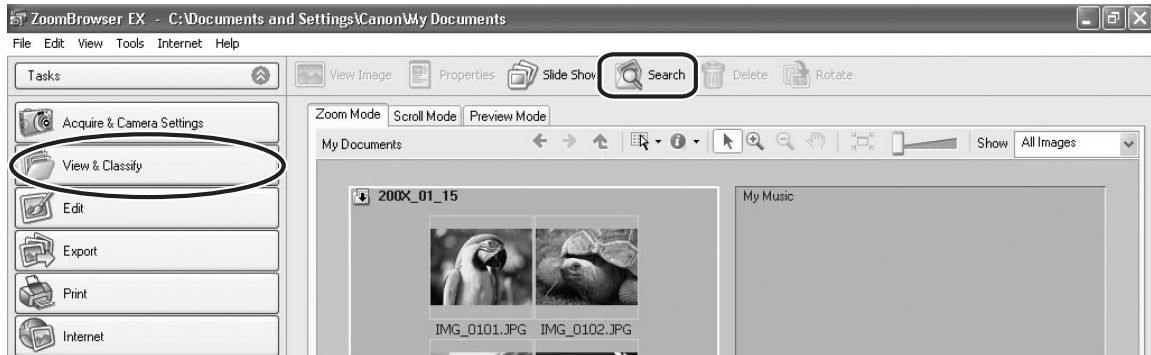
To rename a folder, select a folder, and open the [Rename Folder] window by selecting [Rename] from the [File] menu. Input the new name, and click [OK].

Searching for Images

This task allows you to search for images by Star Rating, Modification Date, Shooting Date, Comment or Keywords.

1 Click [View & Classify] in the Main Window.

You can also search for images by clicking [Search] on Application Tool Bar. Please skip forward to step 3.

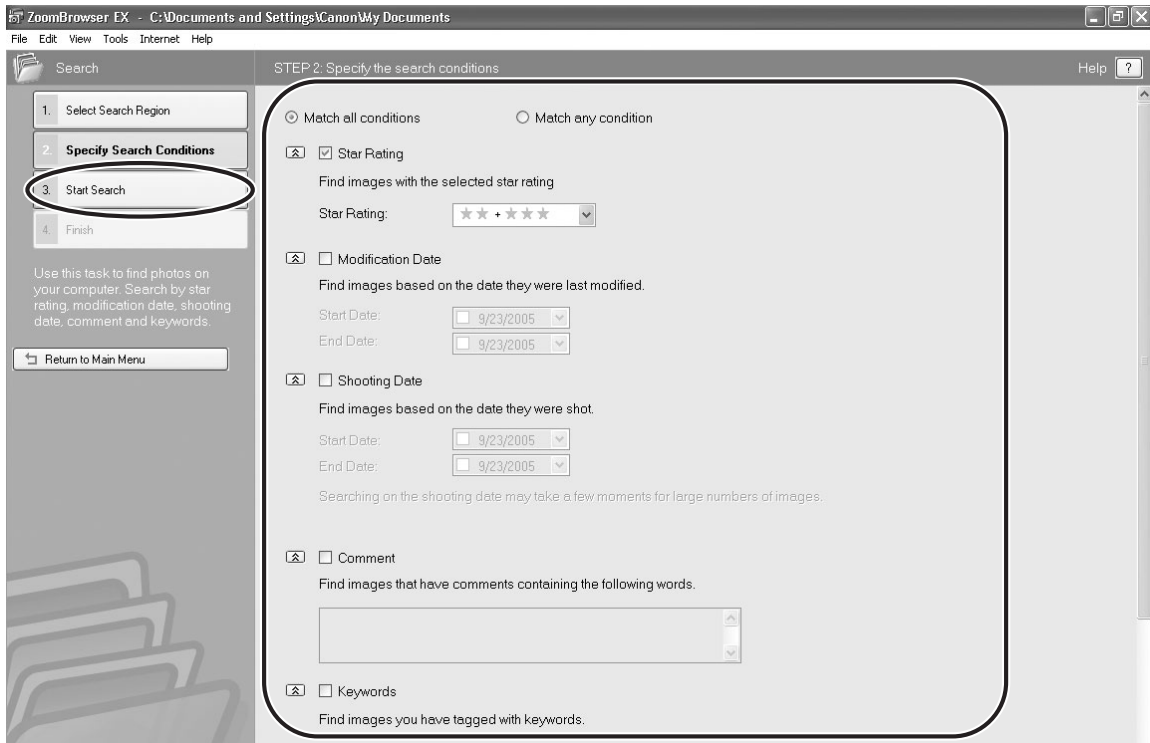


2 Select folders and images from which you wish to search and click [Search].



3 Specify the search conditions and click [Start Search].

- The search results are displayed as thumbnails.
- Select at least one search condition.



E

4 Click [Finish].

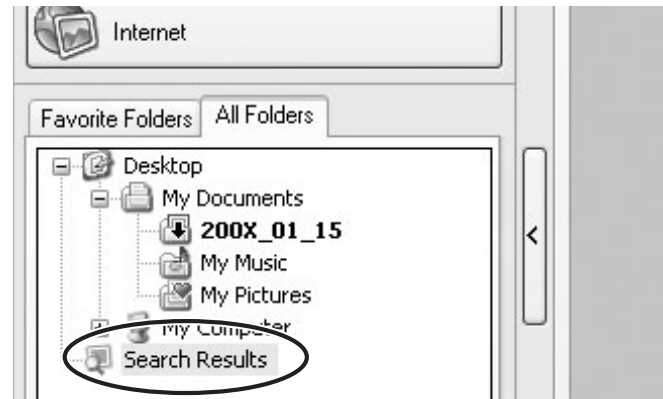
- To change the search parameters and perform another search, click [Specify Search Conditions] and repeat steps 3-4.



Windows




- The images of the search result are displayed in the [Search Results] folder. You can print or copy these images to another folder. The images will remain in this folder until ZoomBrowser EX is closed or another search is performed.



Playing Back and Editing Movies

Playing Back Movies

E

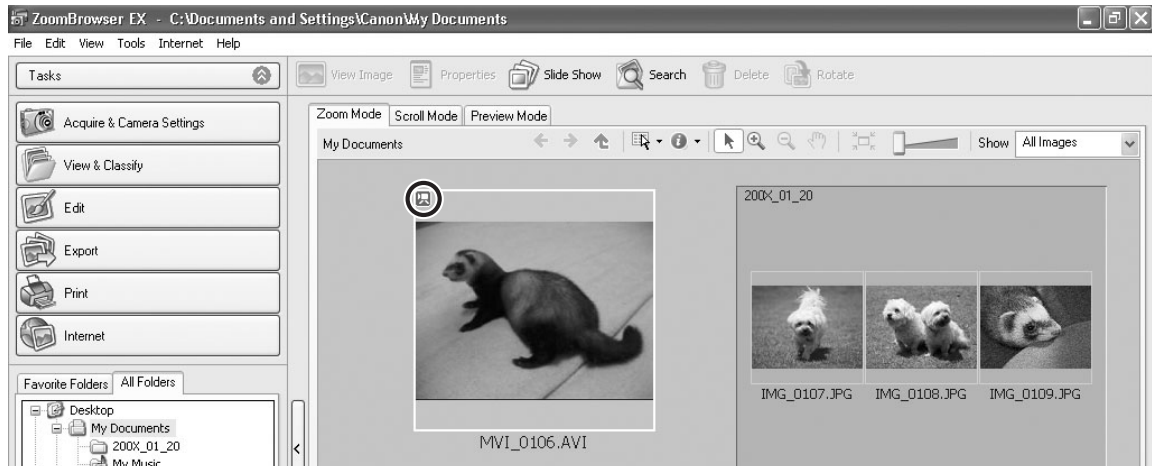
In the CameraWindow and Main Window, movies are displayed with the first scene as a still image with a  (movie) icon.




- If you are not using Windows XP and QuickTime 6.5 is not already installed on your computer, install QuickTime from the DIGITAL VIDEO SOLUTION DISK.
- Do not double-click a movie file (.AVI extension) in Windows Explorer. That will start Windows Media Player, which may not support this file type. To play back movies, double-click the thumbnail with a movie icon in the Main Window's Browser Area.

1 In the Main Window, double-click a thumbnail with a (movie) icon.

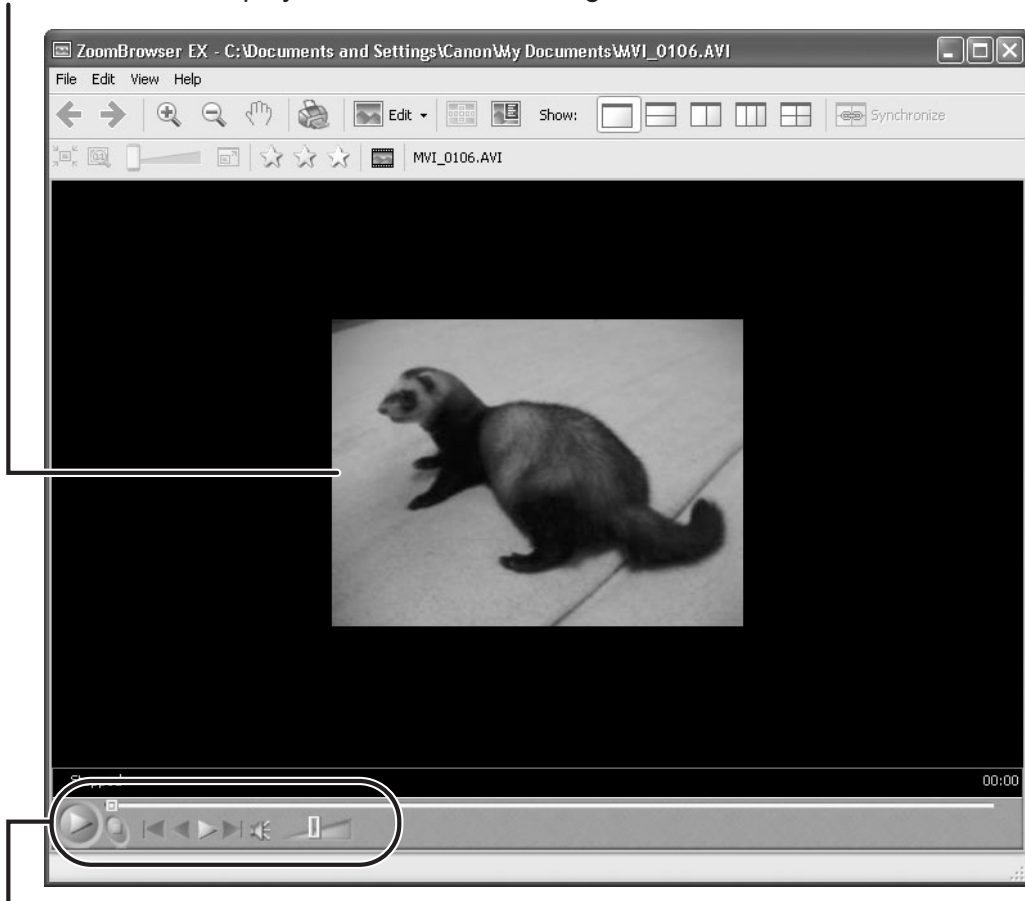
[Image Viewer] window appears.



Windows

The [Image Viewer] window is displayed, and the movie will be played back. You can control (Play back/Stop/FF/RW) the movie being played back with the buttons shown at the left bottom of the window. If you are using Windows XP, you can extract still images from the movie. For details, please refer to *Extracting Still Images from Movies (Windows XP Only)* ( 74).

You can save the displayed scene as a still image.



You can play movies and control the sound volume.

Editing Movies

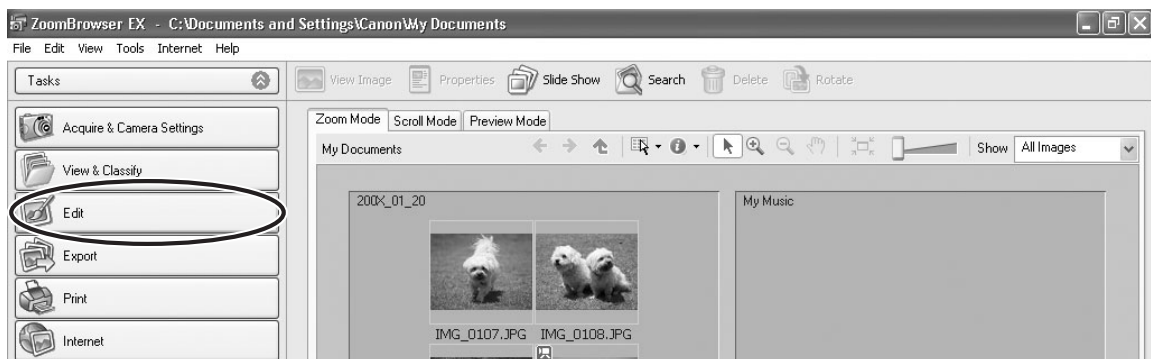
You can link images, insert text and background music, and add effects. You can also change the size of selected movies and save them as new files.

E

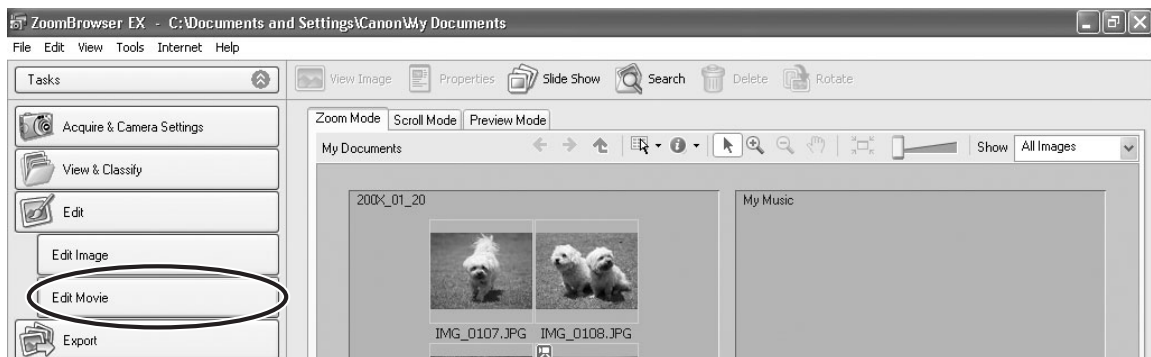


If you are not using Windows XP, QuickTime 6.5 is required to edit movies. If it is not already installed on your computer, install it from the DIGITAL VIDEO SOLUTION DISK. Place the disk in the CD-ROM drive and click QuickTime [Install] in the installer panel.

1 Click [Edit] in the Main Window.



2 Click [Edit Movie].



Windows

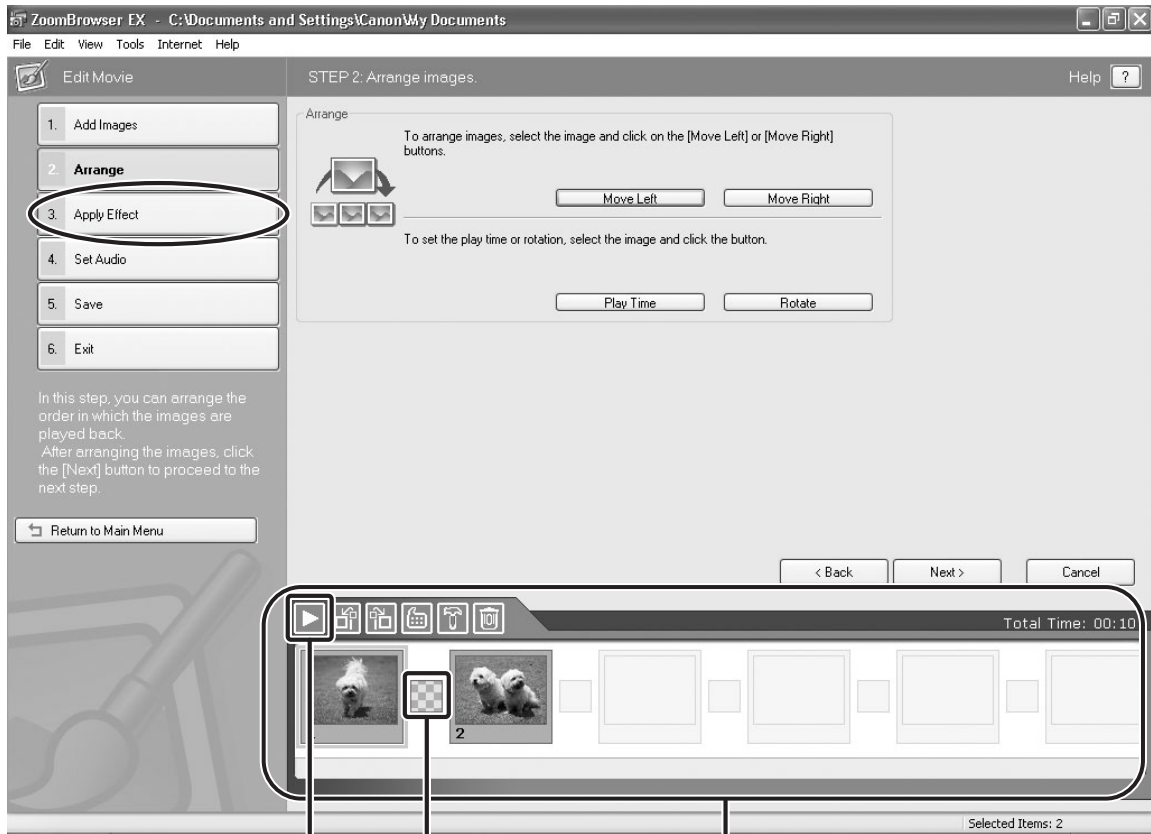
3 Select images and click [Arrange].

You can select multiple images or a folder to include all images in that folder.



4 Arrange images and click [Apply Effect].

To change the order of images, select an image in the Storyboard Area and click [Move Left] or [Move Right].



Plays back the movies being edited.

Transition Box

Displays the symbol of the transition effect between linked images.

Storyboard Area

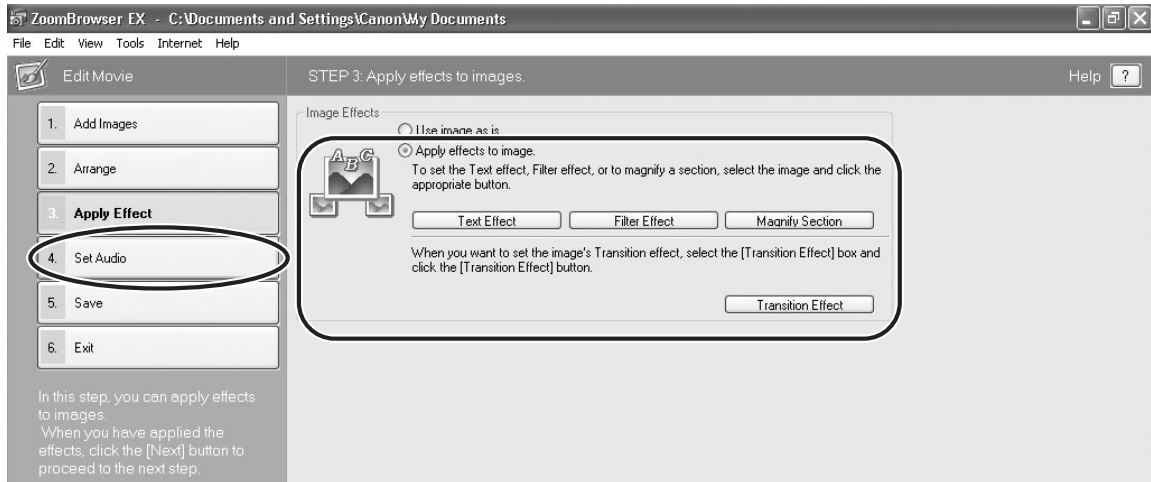
Displays thumbnails of the selected images. The images will be linked from left to right.

5 Apply effects to the images and click [Set Audio].

When you select [Apply effects to image.], you can use the following functions.

- [Text Effect]: Opens the [Text Effect Settings] window. You can enter text, change the font and preview the effect.
- [Filter Effect]: Opens the [Filter Effect Settings] window. You can set the filter effect type, the start and end point, and preview the effect.
- [Magnify Section]: Allows you to view a part of the image in enlarged size.
- [Transition Effect]: Opens the [Transition Effect Settings] window. You can set the transition effect type and display time, and preview the effect. To set a transition effect, you need to select a transition box in the Storyboard Area.

E

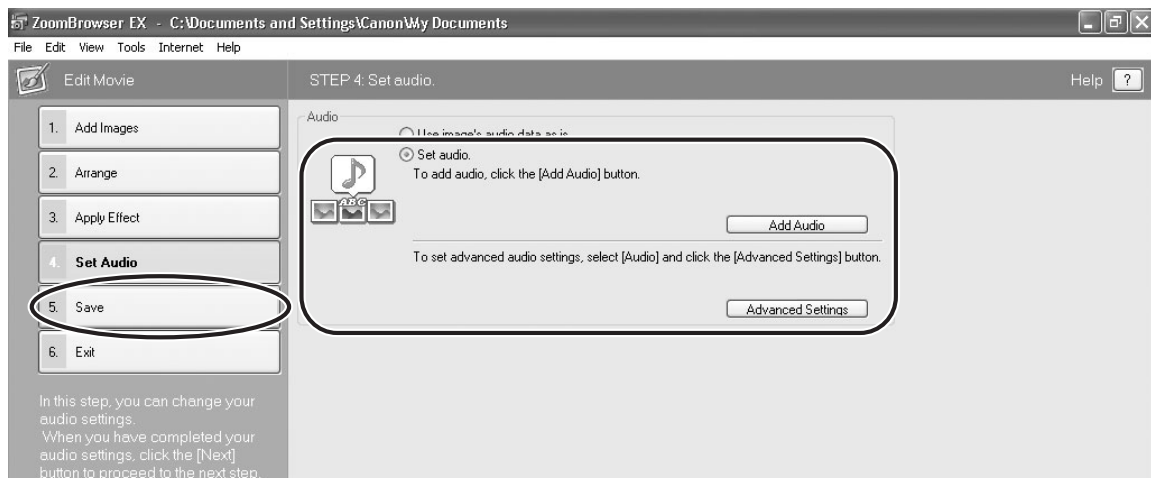


6 Set the audio and click [Save].

When you select [Set audio.], you can use the following functions.

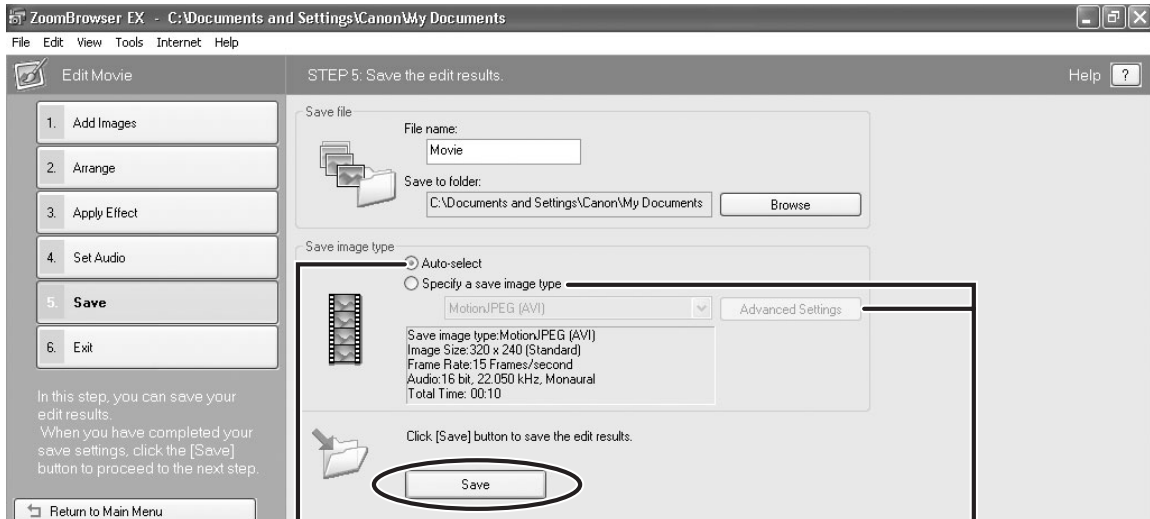
- [Add Audio]: Opens the [Add Audio] window. You can add a MP3 or a WAV file as background music.
- [Advanced Settings]: Opens the [Advanced Audio Settings] window. You can adjust the audio level of a movie or an audio file and apply audio faders. To set the advanced audio settings, you need to select a movie or an audio file which you added.

Windows



7 Click [Save].

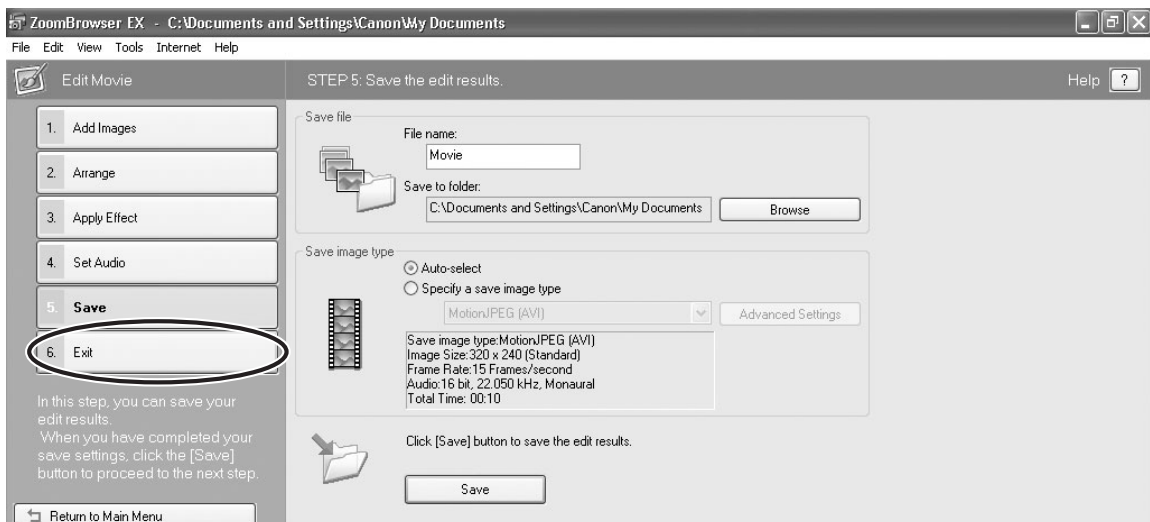
Movies are saved in DCF type files with Motion JPEG/AVI compression.



Select this to save as Motion JPEG compressed AVI.

Selecting [Specify a save image type] and clicking [Advanced Settings] allows you to set [Image Size], [Frame Rate] or [Audio] settings of the movie.

8 Click [Exit].

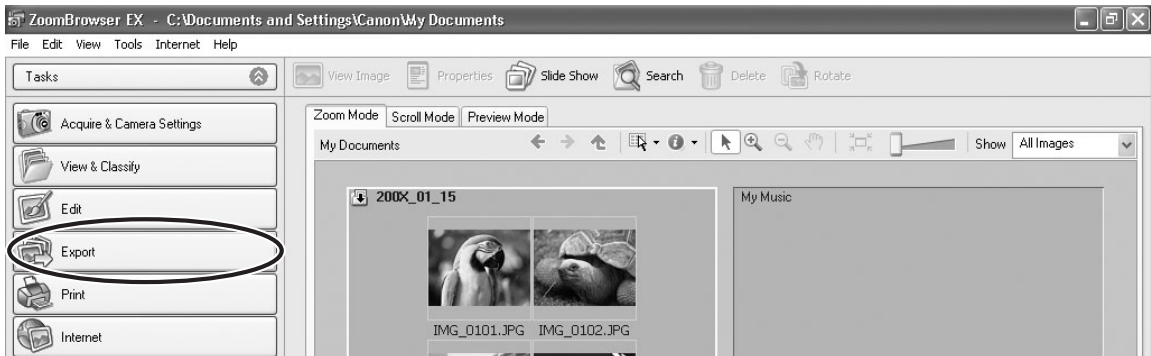


Exporting Images

You can change the data type for selected still images and movies and save them as new files. You can also export selected movies and still image properties to a text file or copy and rename movies and still images. Furthermore, you can export still images for use as a screen saver or a wallpaper.

Changing the File Type and Save

1 Click [Export] in the Main Window.



2 Select the export type.

If you selected [Export Movies], [Extract frames from a movie] or [Backup to CD], please refer to the pages listed below.

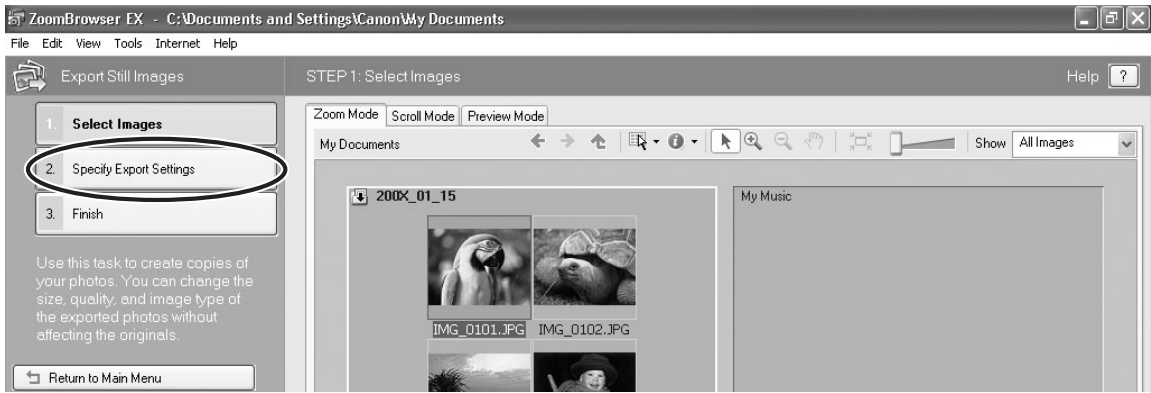
[Export Movies]: *Exporting Movies* (📖 71)

[Extract frames from a movie]: *Extracting Still Images from Movies (Windows XP Only)* (📖 74)

[Backup to CD]: *Saving on CD-R/RW Disks (Windows XP Only)* (📖 77)



3 Select images and click [Specify Export Settings].

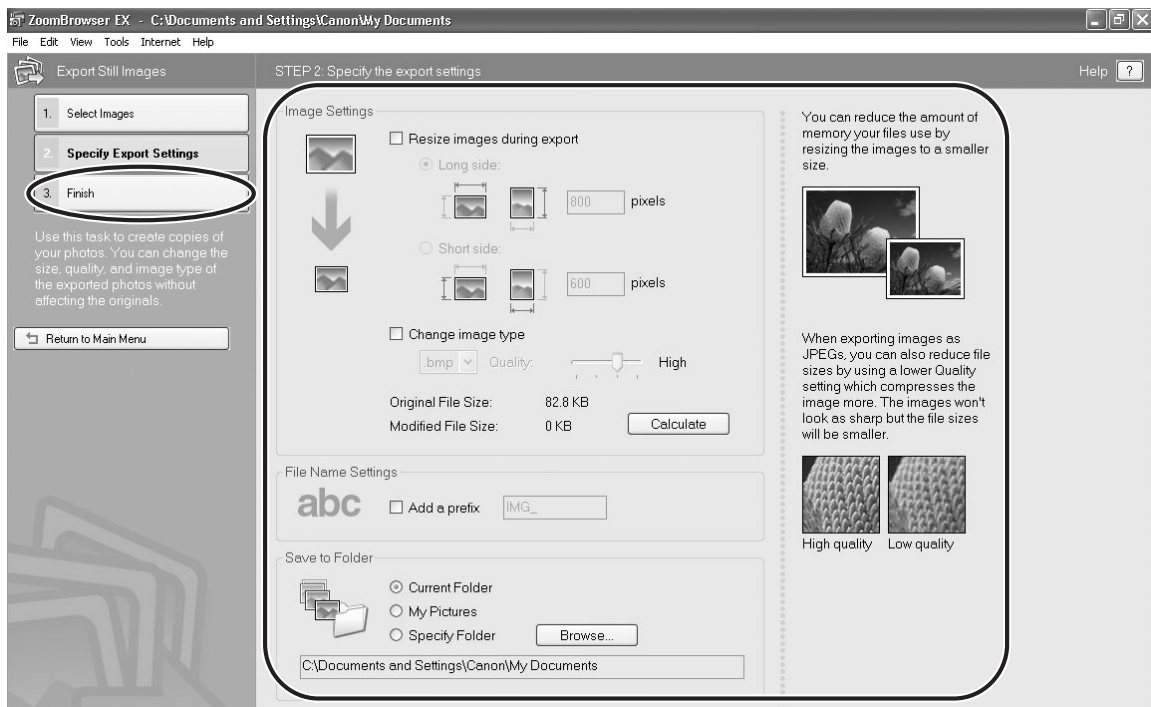


4 Specify the export settings and click [Finish].

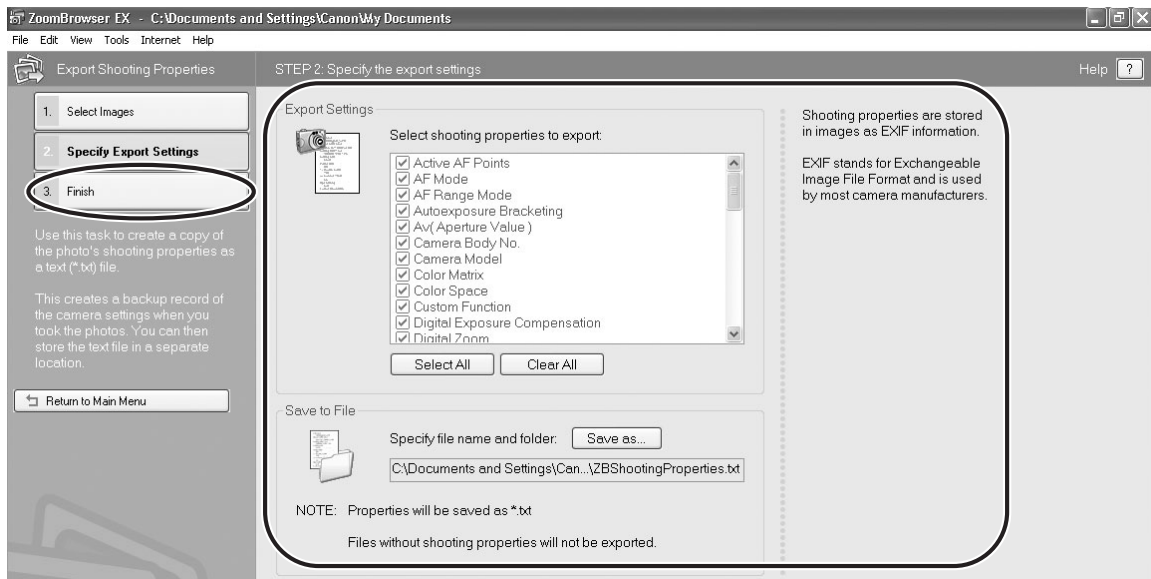
The window varies depending on the selected export type in step2.

When you have selected [Export Still Images]:

You can convert still images to another file type, resize and save them as new files. You can select the file type from BMP, JPEG and TIFF. You can also specify a prefix to be added to the exported still images.

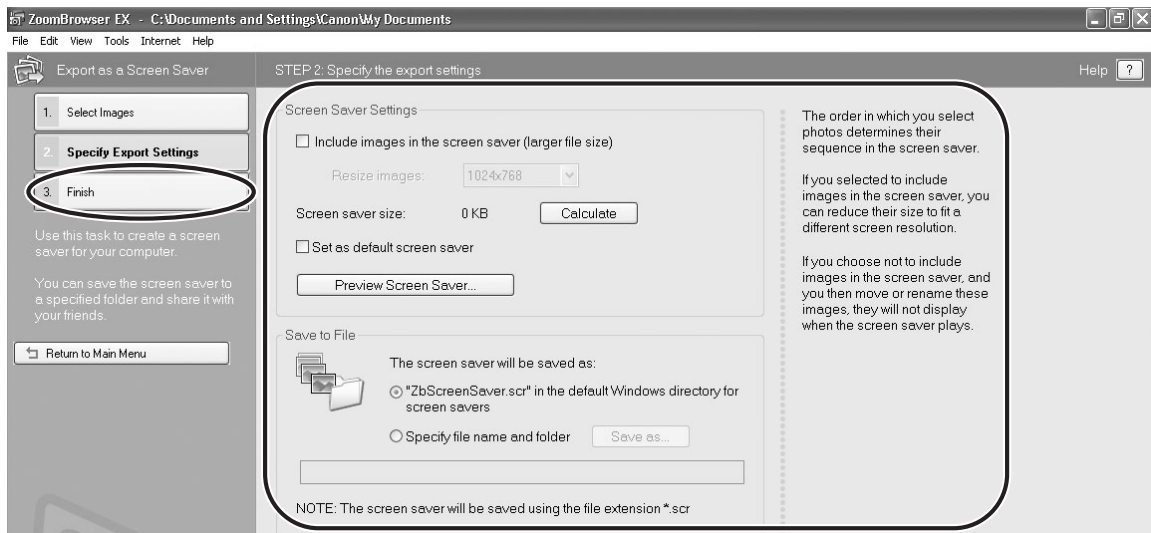


When you have selected [Export Shooting Properties]: You can select the information you wish to export and save as a text file.



E

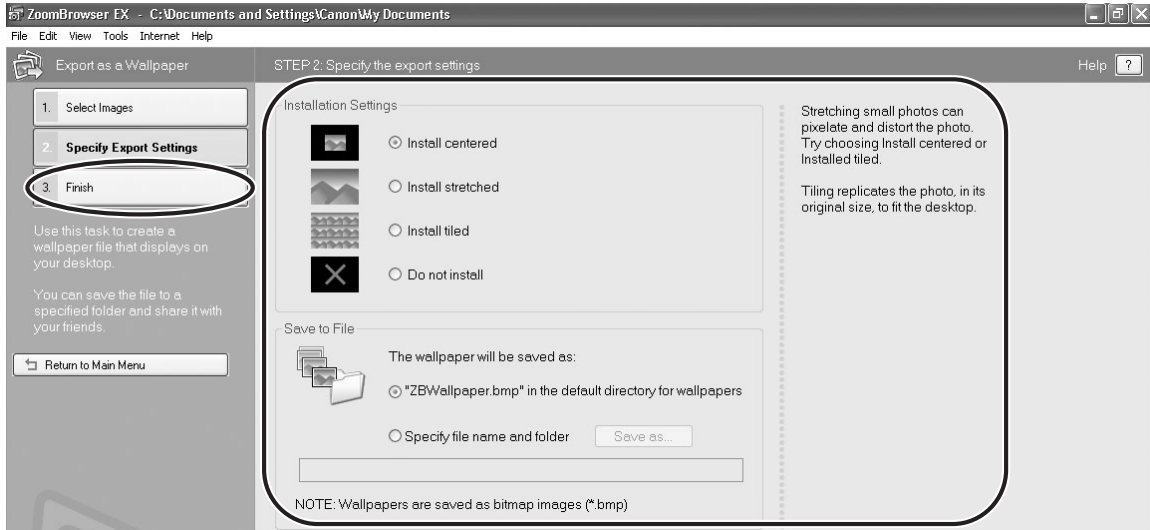
When you have selected [Export as a Screen Saver]: You can export and save the image as a screen saver.



Windows

When you have selected [Export as a Wallpaper]:

You can export and save the image as Windows wallpaper. This task cannot be performed if you have selected multiple images.



Exporting Movies

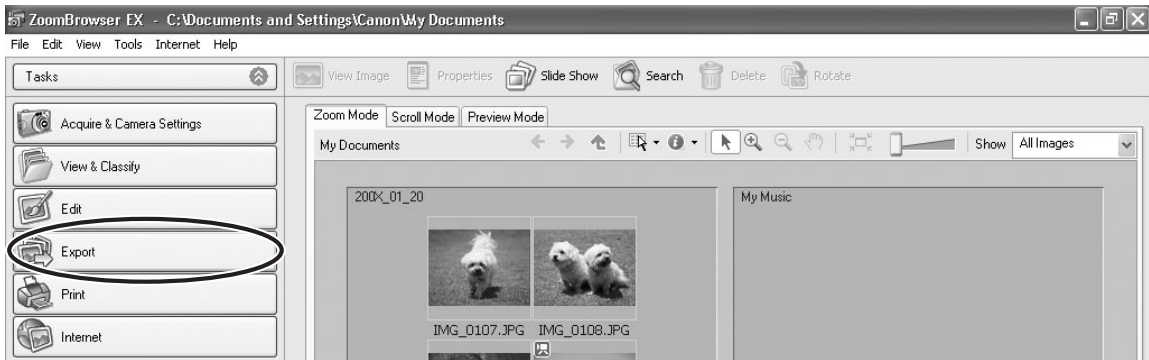
You can change the size or data for selected movies and save them as new files.



If you are not using Windows XP, QuickTime 6.5 is required to export movies. If it is not already installed on your computer, install it from the DIGITAL VIDEO SOLUTION DISK. Place the disk in the CD-ROM drive and click QuickTime [Install] in the installer panel.

E

1 Click [Export] in the Main Window.



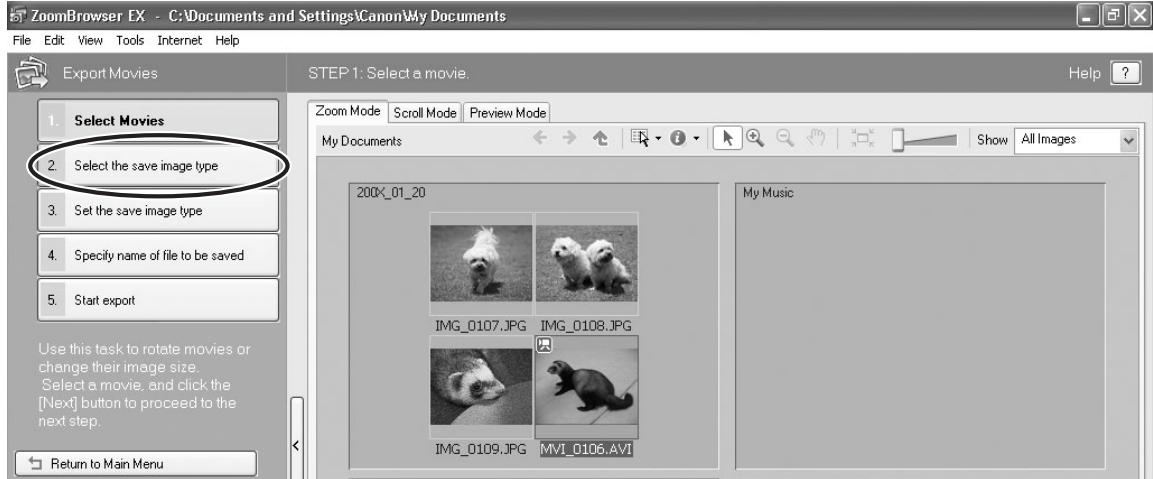
2 Click [Export Movies].



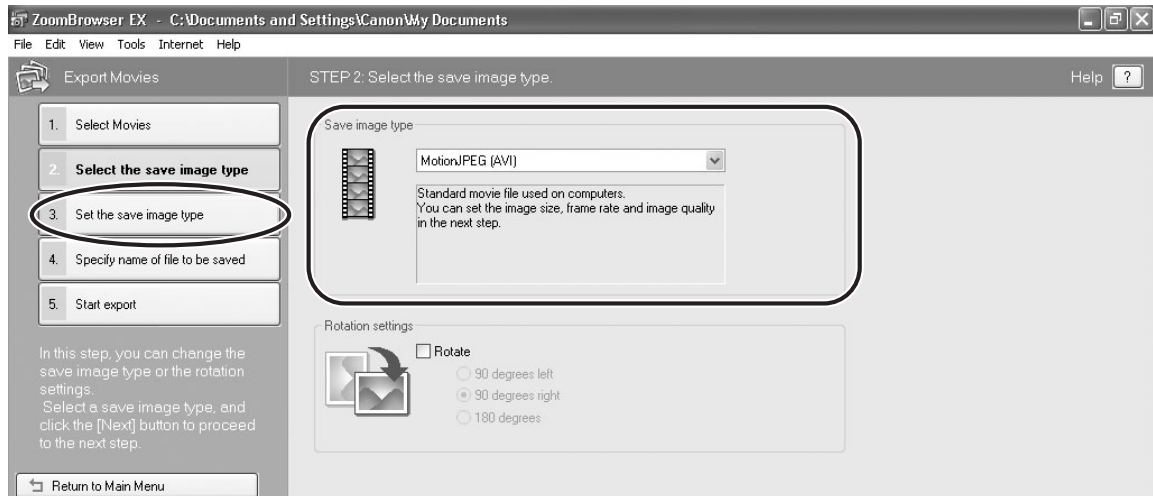
Windows

3 Select a movie and click [Select the save image type].

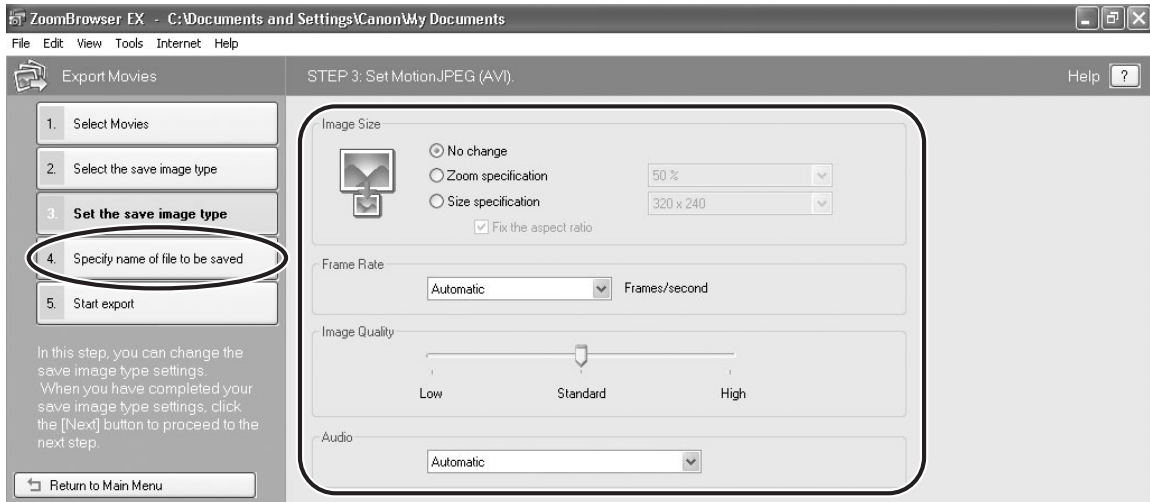
You can select multiple images or a folder to include all images in that folder. Still images cannot be selected. For instructions on how to export still images, see *Exporting Images* (📖 67).



4 Select a file type and click [Set the save image type].



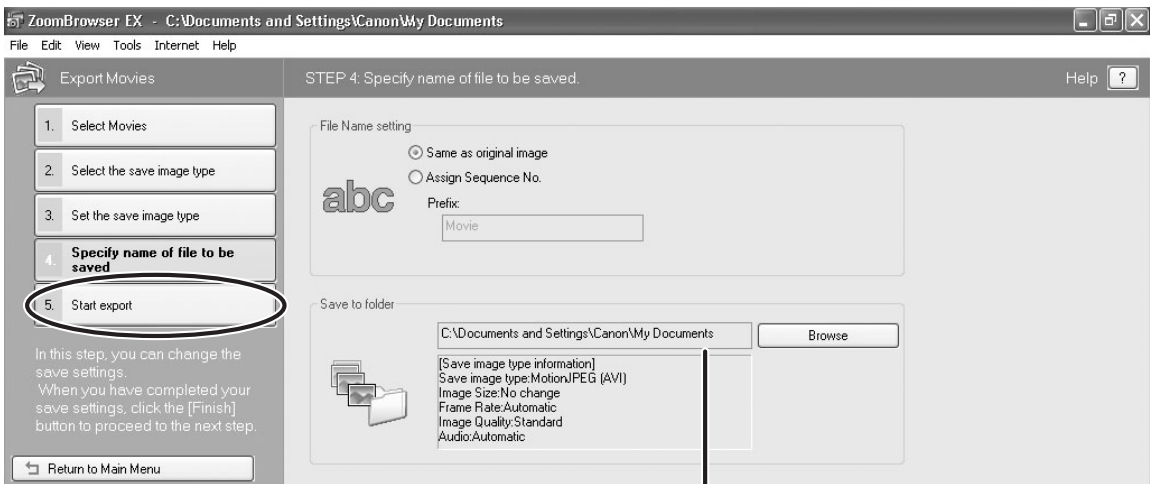
5 Specify the export settings and click [Specify name of file to be saved].



E

6 Specify the file name and click [Start export].

In each case, specify the destination folder and file name of the movie to be exported.



Destination Folder

Windows

7 Click [OK].

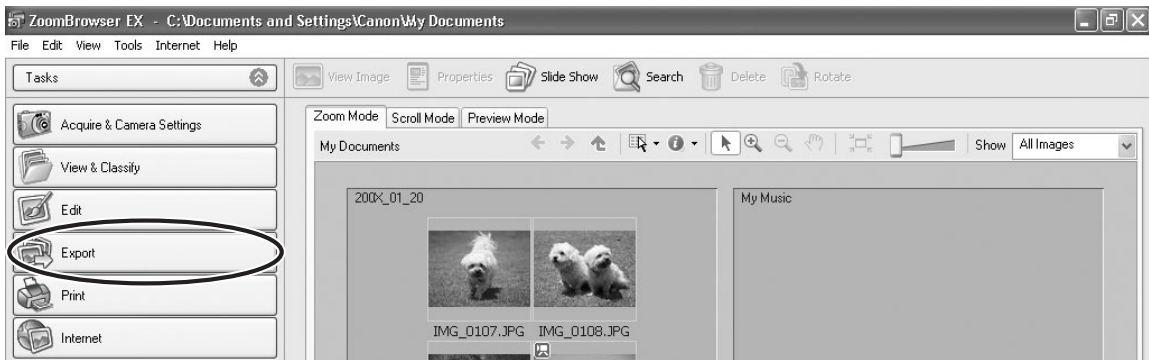
The Main Window appears.



Extracting Still Images from Movies (Windows XP Only)

You can extract still images from movies and save them as image files.

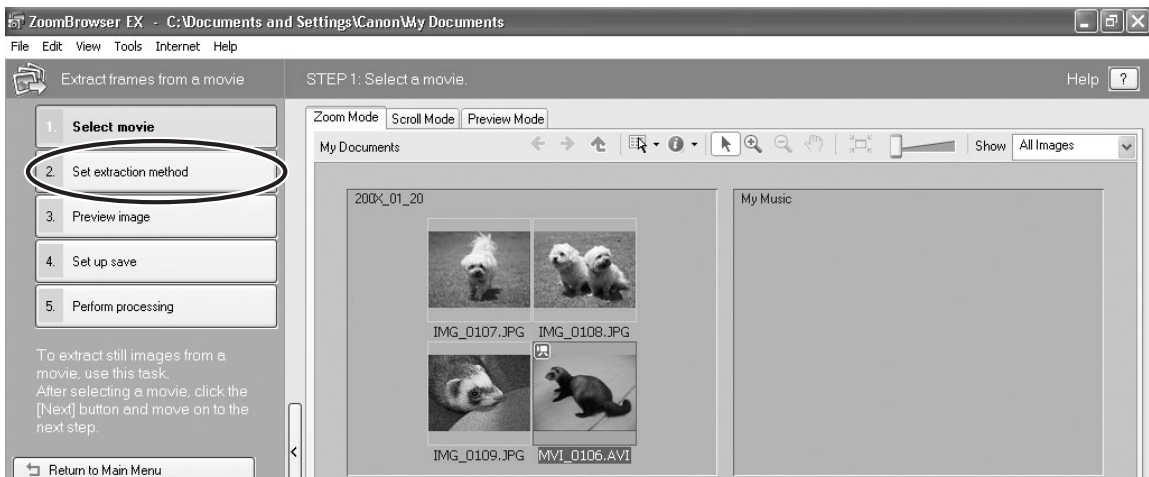
1 Click [Export] in the Main Window.



2 Click [Extract frames from a movie].

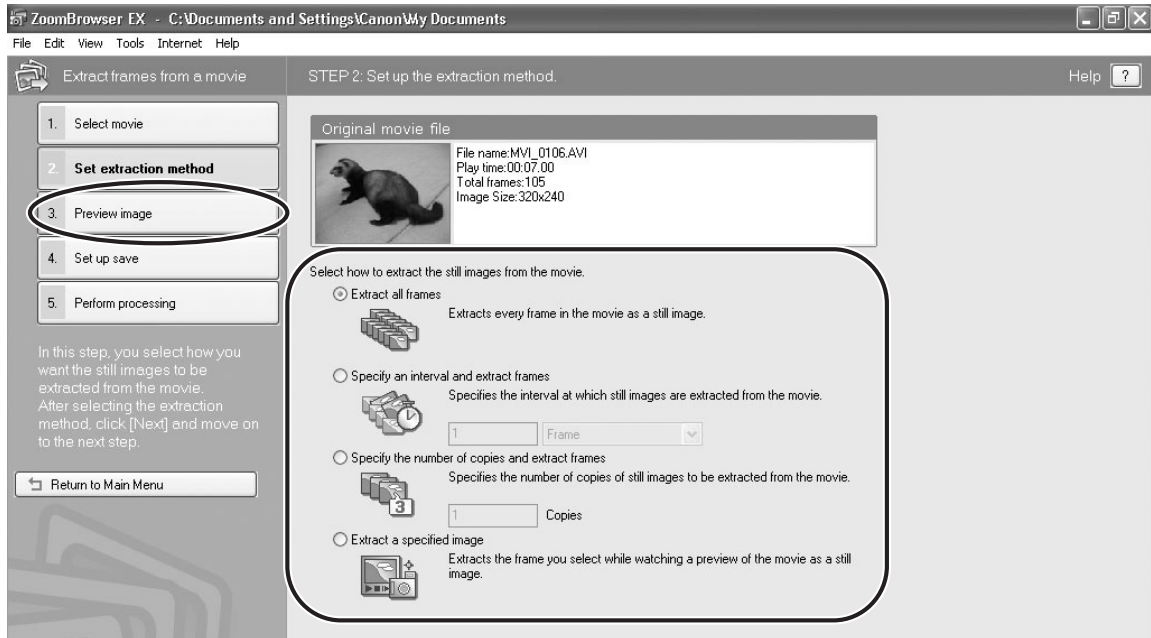


3 Select the movie from which you wish to extract still images and click [Set extraction method].



4 Select the still images extraction method and click [Preview image].

- [Extract all frames]: Extracts all frames in the movie as still images.
- [Specify an interval and extract frames]: Extracts frames as still images from a specified frame range or time interval.
- [Specify the number of copies and extract frames]: Extracts a specified number of still images from the entire movie. The extraction interval is calculated based on an equal distribution of the specified number of still images.
- [Extract a specified image]: Extracts still images from scenes that catch your attention.

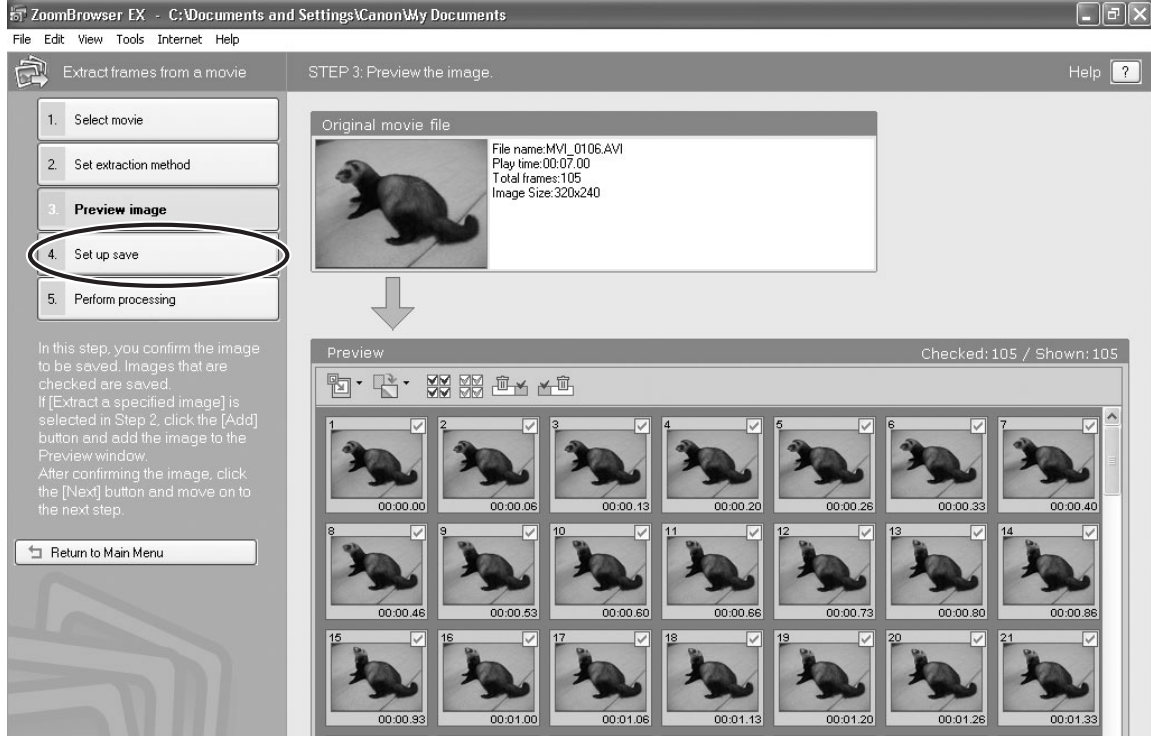


E

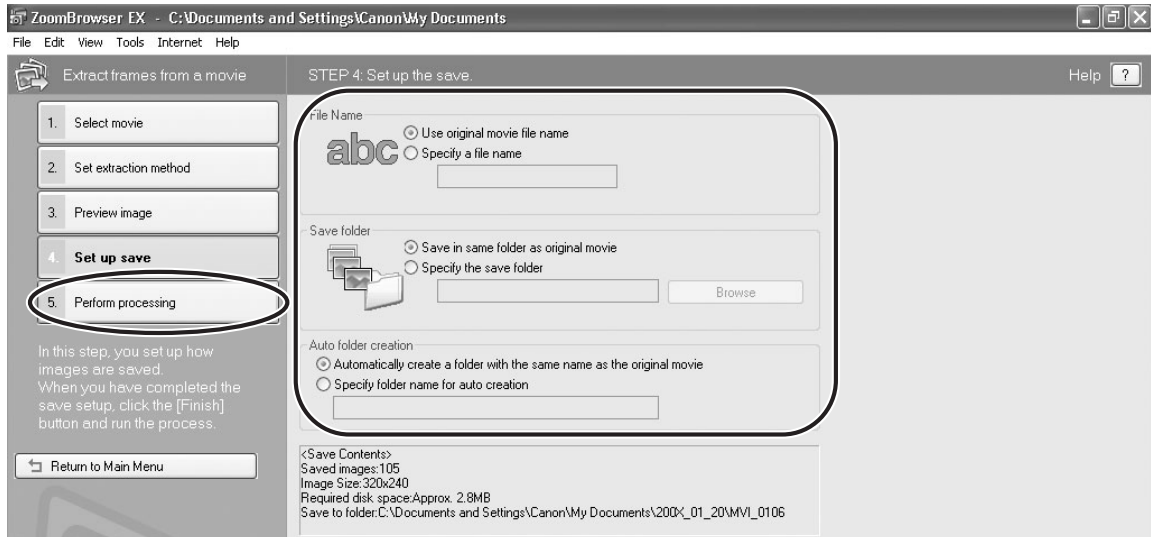
Windows

5 Confirm the still images extracted and click [Set up save].

If you selected [Extract a specified image] in the previous window, the movie will be displayed in the upper part of the window. Display the images you want and click [Add].



6 Specify the file name and the folder where you wish to save it and click [Perform processing].



Saving on CD-R/RW Disks (Windows XP Only)

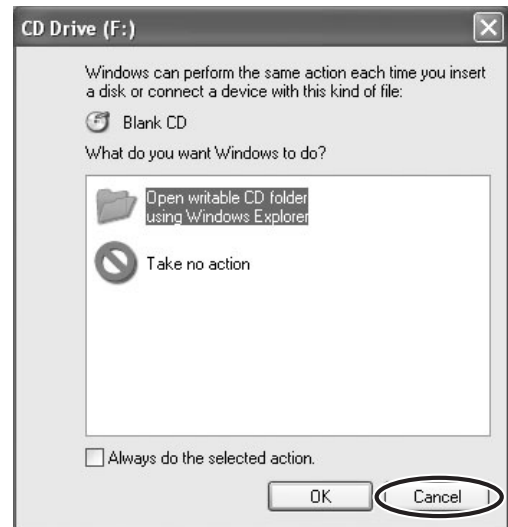
You can copy and save images to CD-R or CD-RW disks. The shooting information is copied along with the images.

E

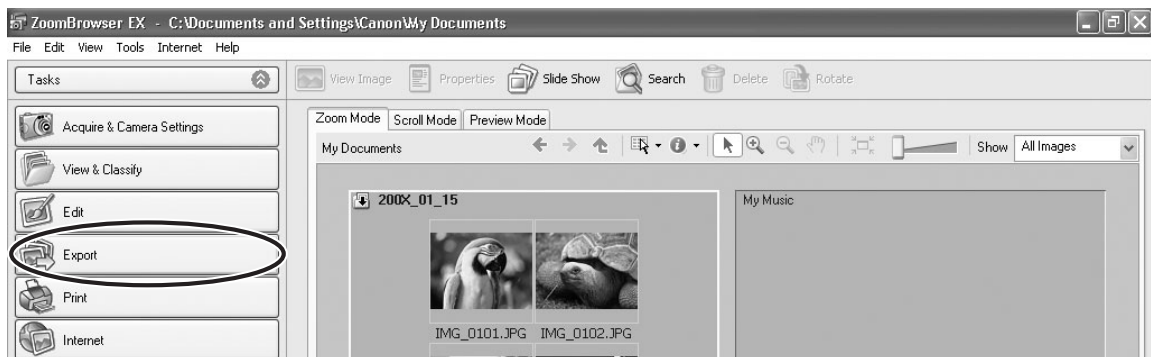


This function can only be used on a computer that came with a CD-R/RW drive as standard equipment.

- 1 Place a CD-R/RW disk in the computer's CD-ROM drive.
- 2 If the following window appears, click [Cancel].

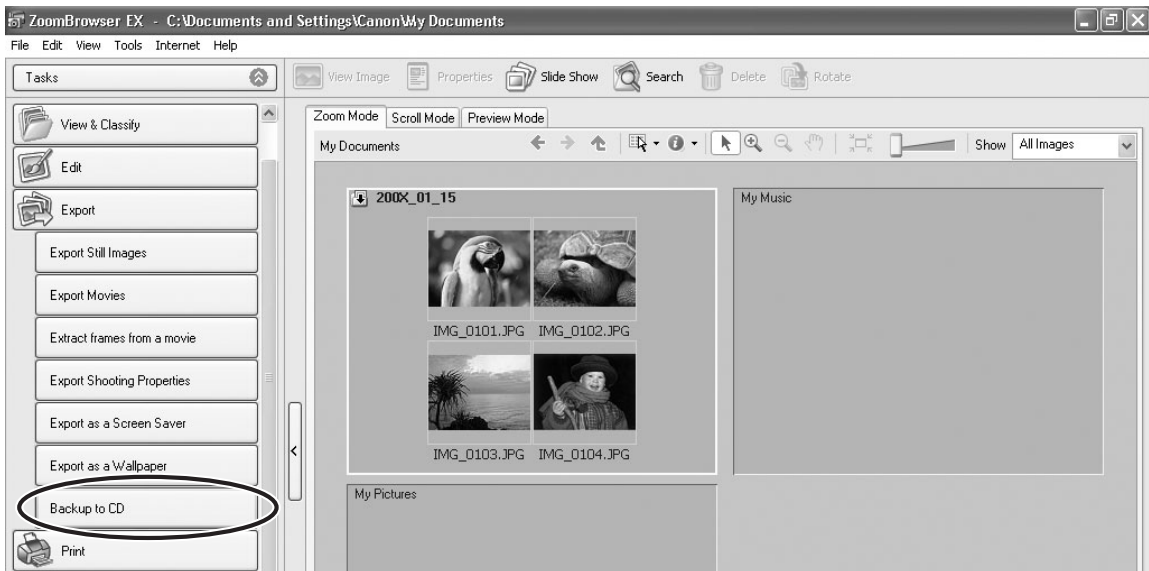


- 3 Click [Export] in the Main Window.



Windows

4 Click [Backup to CD].

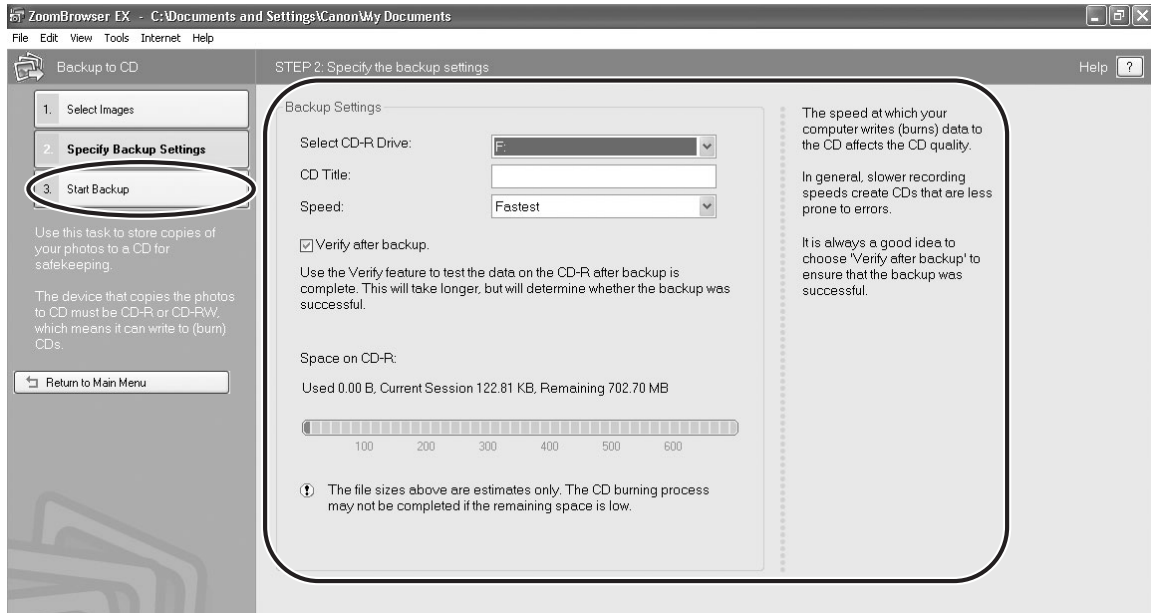


5 Select the folders or images you wish to save and click [Specify Backup Settings].



6 Set the backup settings and click [Start Backup].

The disk will be ejected from the drive when copying is complete.



E



You can add images to a CD-R/RW disk that already contains images.

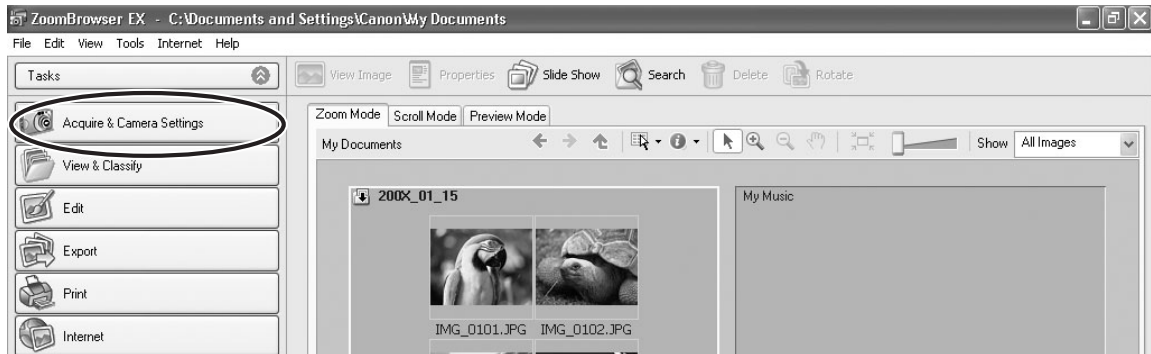
Windows

Adding Still Images from Your Computer to the Memory Card

You can save still images (JPEG) from the computer to a memory card of the camcorder and a card reader/writer. You can also save sample images for card mix from the DIGITAL VIDEO SOLUTION DISK.

■ Adding Still Images to the Memory Card

- 1 Connect the camcorder to the computer (📖 26).
- 2 Click [Acquire & Camera Settings] in the Main Window.



- 3 Click [Set to Camera].

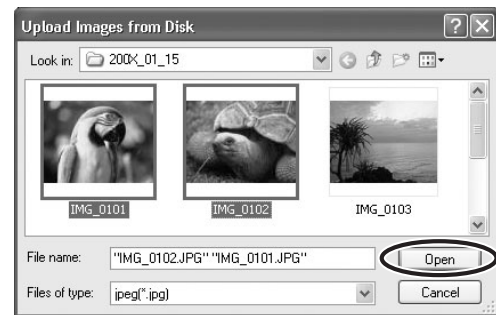


4 Click [Uploads images to the camera].



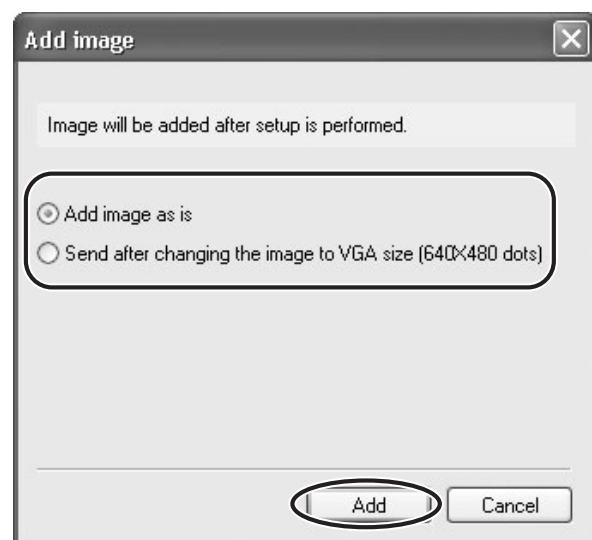
E

5 Select the still images you wish to save and click [Open].



Windows

6 Select the image size and click [Add].



When you upload images edited with another application, images properties may be lost.

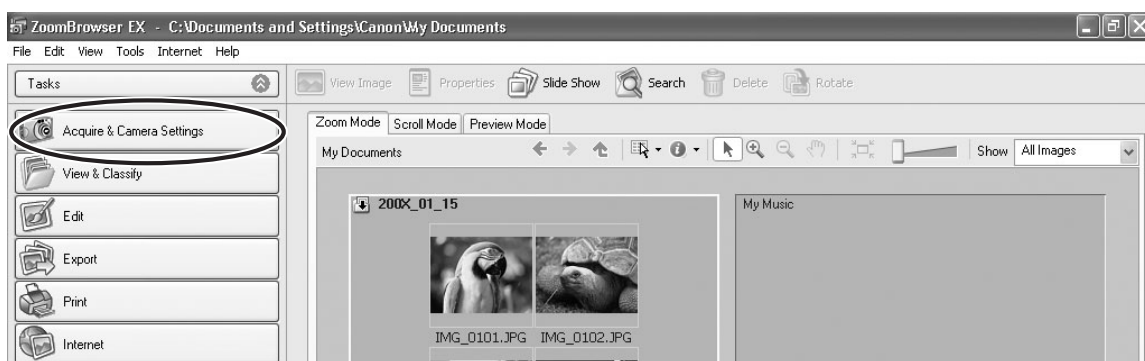
■ Adding Sample Images to the Memory Card

You can save sample images to be used with the Card Mix function to the memory card in the camcorder or in a card reader/writer. The sample images are provided on the DIGITAL VIDEO SOLUTION DISK.



The sample images provided on the supplied DIGITAL VIDEO SOLUTION DISK are intended only for personal use with this camcorder. Do not use these sample images for other purposes.

- 1 Connect the camcorder to the computer (26).**
- 2 Insert the DIGITAL VIDEO SOLUTION DISK to the computer's CD-ROM drive.**
If the installer panel opens, click [Exit] to close it.
- 3 Click [Acquire & Camera Settings].**



- 4 Click [Set to Camera].**

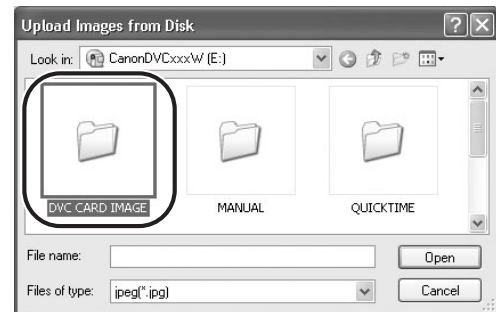


5 Click [Uploads images to the camera].



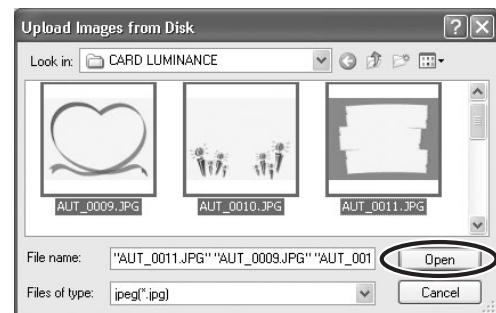
E

6 In [Look in:], select the CD-ROM icon, and double-click [DVC CARD IMAGE].



Windows

7 Select the sample images you wish to save and click [Open].



8 In the Add image window, click [Add].

The sample images are saved in the memory card.



Using Various Functions

Attaching Still Images to E-mail Messages

E

You can attach selected still images to an E-mail message.



To use this function, the e-mail software must be enabled as MAPI client. For details, refer to the instruction manual of the e-mail software.

1 Click [Internet] in the Main Window.

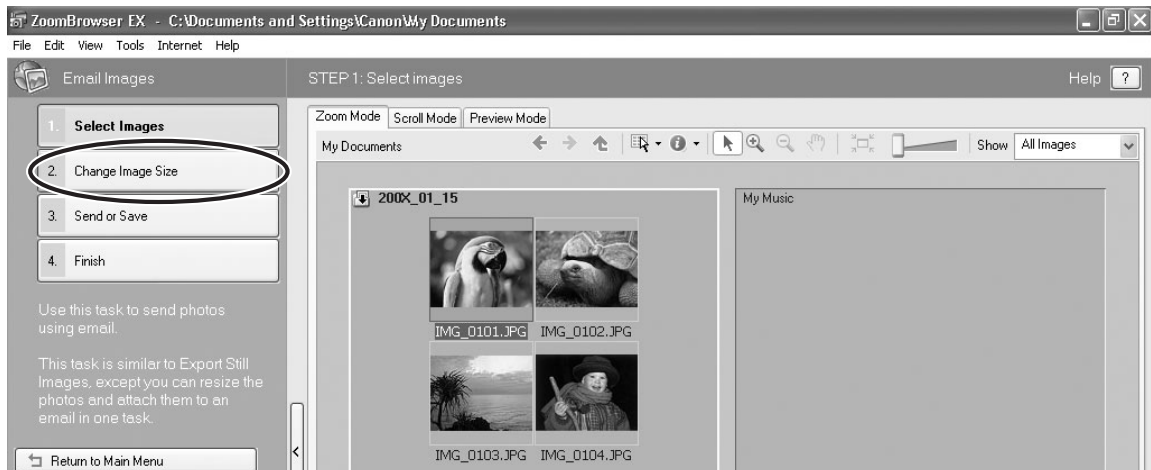


2 Click [Email Images].



Windows

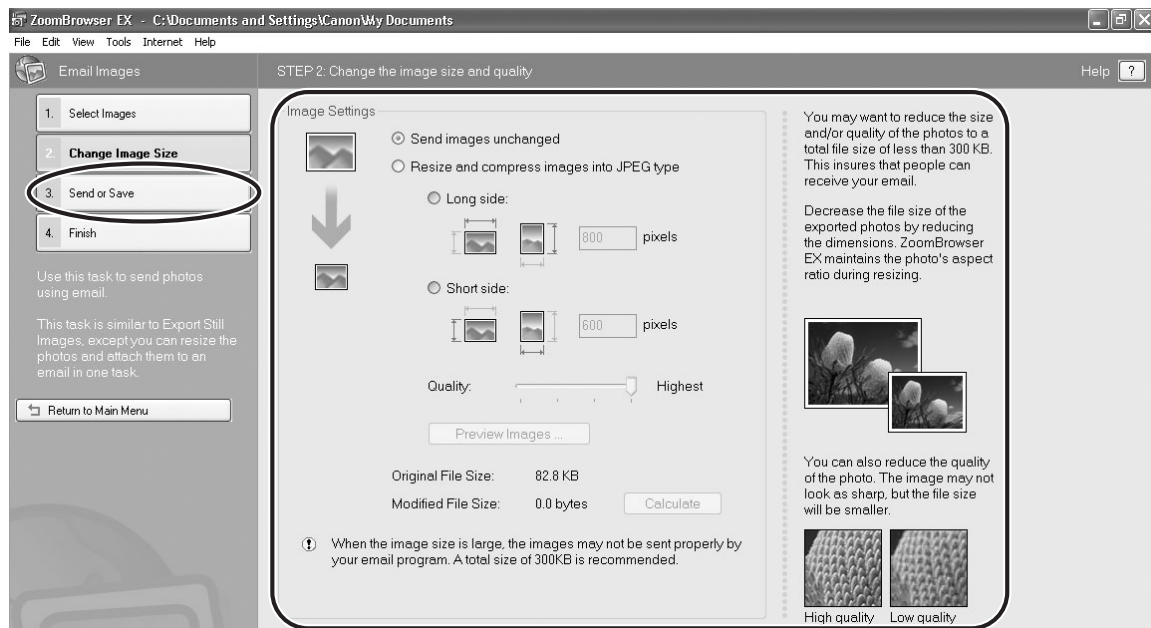
3 Select the still images you wish to send and click [Change Image Size].



4 Select image size and quality, and click [Send or Save].

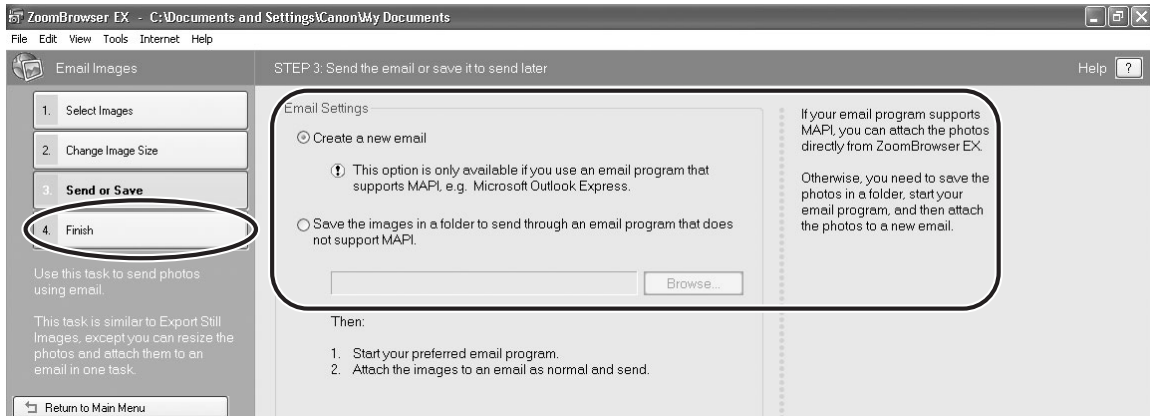
If you wish to send the still image without changes, select [Send images unchanged]. Normally select [Resize and compress images into JPEG type].

- [Long side/Short side]: Selects the long or short side and sets the image size in numbers.
- [Quality]: The lower the quality, the coarser becomes the still image and smaller the file size.
- Pressing [Calculate] displays the file size after the compression as [Modified File Size].
- You can check the compressed still image by pressing [Preview Images].



5 Select to send still images by e-mail or to save the still images in a folder and click [Finish].

- If you selected [Create a new email], your e-mail software starts and the selected still images appear as an attachment in the message window. Input address, subject and your comments and send the message. E-mail software not supporting MAPI does not start automatically. In this case, select [Save the images in a folder...].
- If you select [Save the images in a folder...], click [Browse] and select the destination folder. Start your e-mail software and attach the saved still image to a message.



E

Windows

Running a Slide Show

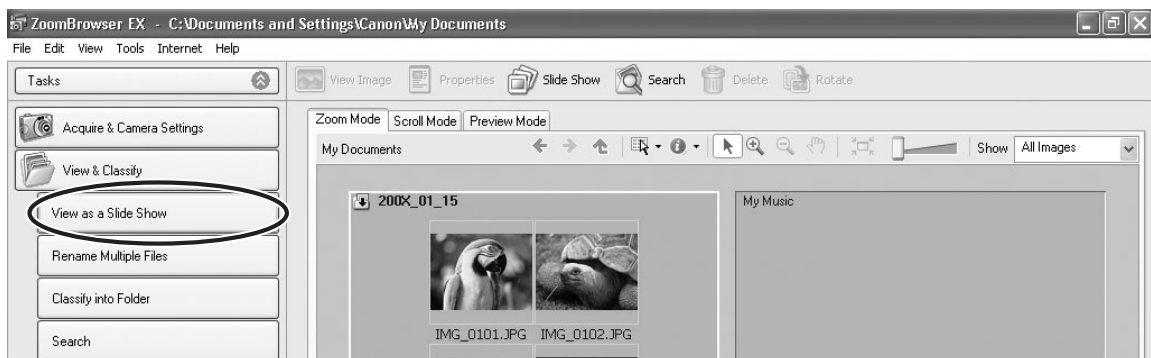
You can view selected still images in a slide show. Movies cannot be selected for a slide show.

1 Click [View & Classify] in the Main Window.

You can also view a slide show by clicking [Slide Show] on Application Tool Bar. Please skip forward to step 4.



2 Click [View as a Slide Show].

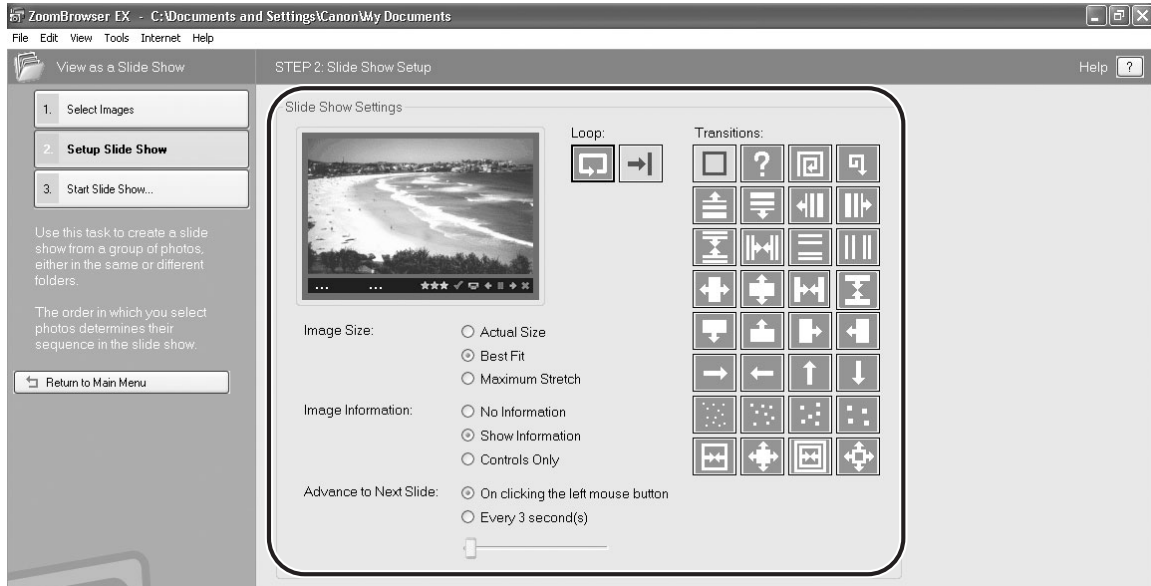


3 Select the images and click [Setup Slide Show].



4 Select the slide show settings.

- [Image Size]: Select the size of the still images.
- [Image Information]: Select to show image information such as file name or title.
- [Advance to Next Slide]: Select to advance manually or automatically. When you select “Every 3 second(s)”, you can select the interval in the control below (from 1 to 120 seconds).
- [Loop]: Select to stop the slide show after the last image or to continuously run it in a loop.
- [Transitions]: Select the transition effect to be used when moving from one slide to another. When you click an effect, you can check the effect in the preview window.



5 Click [Start Slide Show].

Click  in the lower right corner to end the slide show.

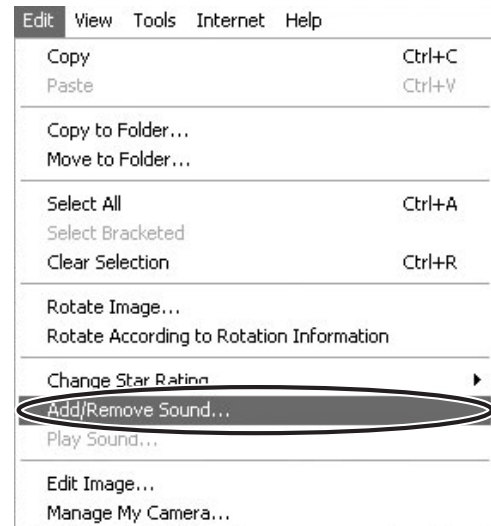
E

Windows

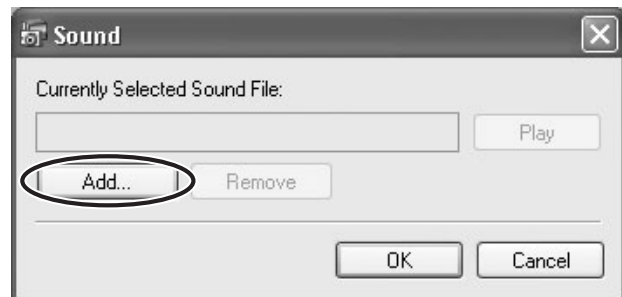
Adding Sound to an Image

- You can add a sound to an image. The sound file needs to be in WAVE type (extension “.wav”) or in MIDI type (extension “.mid” or “.midi”).
- The sound cannot be played back on the camcorder.

1 In the Main Window, select an image and select [Add/Remove Sound] from the [Edit] menu.



2 Click [Add].




3 Select the sound file and click [Open].

4 Click [OK].

- The sound file will be copied to the same folder as the image.
- To play back the sound, select an image with a sound icon and select [Play Sound] from the [Edit] menu.



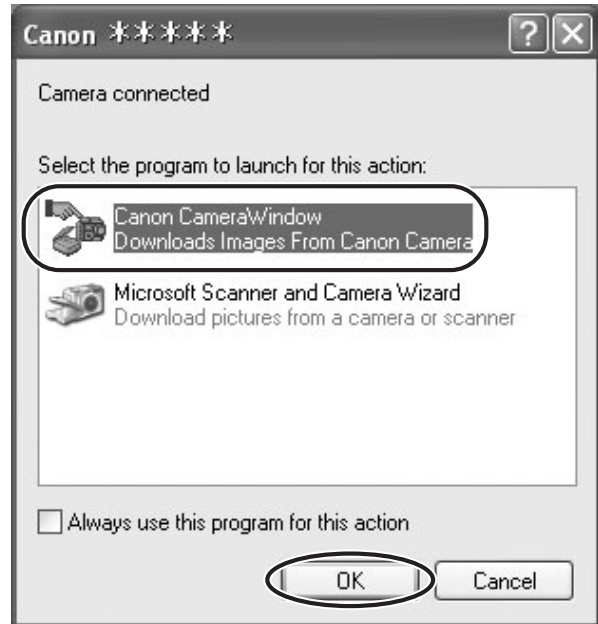
- To remove sound from an image, select [Remove] on the Sound window in step 2.  disappears and the copied sound file will be deleted.
- The [Play Sound] window appears and plays back the sound.

Reviewing and Changing the Owner Name of the Camcorder

You can change and confirm the owner name of the camcorder.

E

- 1 Connect the camcorder to the computer (26).
- 2 Select [Canon CameraWindow] and click [OK].



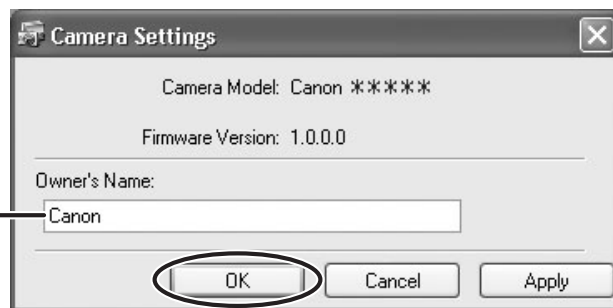
- 3 Click the [Set to Camera] tab and click [Confirms/changes camera settings].



Windows

4 Change the settings of the camcorder and click [OK].

Input a camcorder owner name here (up to 31 characters).



Uninstalling the Software

Uninstall the software when you wish to delete it from your computer or when reinstallation is required to fix corrupted files.

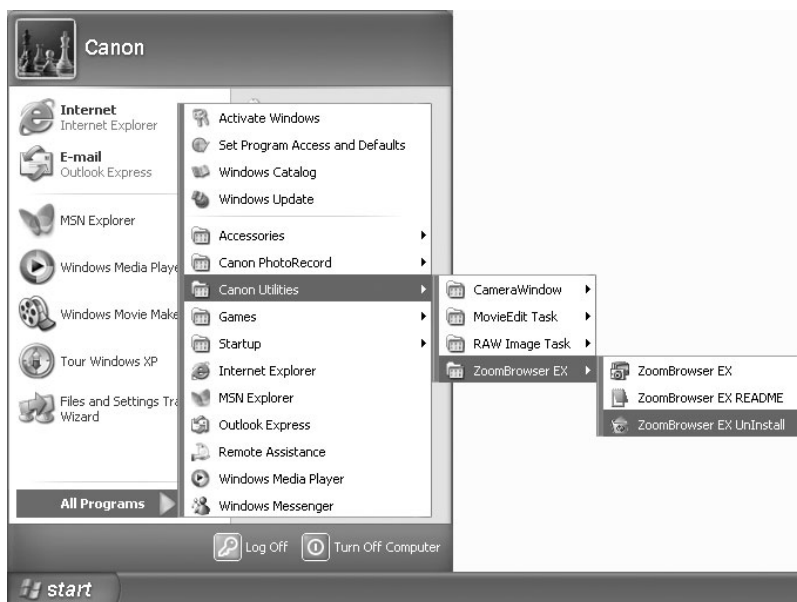
E



Users of Windows 2000 and Windows XP must first log in as an Administrator to uninstall the driver and other programs.

Uninstalling ZoomBrowser EX

- 1 Click the Windows [start] menu and select [All Programs] ▶ [Canon Utilities] ▶ [ZoomBrowser EX] and [ZoomBrowser EX UnInstall].



Windows



- When uninstalling CameraWindow, please uninstall it in the following order:
 - Numbers or names of cameras displayed in the menu are substituted with “x” in the following steps.
 - 1) [CameraWindow DSLR x] in the [EOS Digital X] folder
 - 2) [CameraWindow DC_DV x] in the [PowerShot xxxxx-DV X] folder
 - 3) [CameraWindow MC x] in the [CameraWindow] folder
- Uninstall all programs in [Canon Utilities] when you have uninstalled ZoomBrowser EX.
- PhotoRecord can be removed with the same procedure.
- RAW Image Task is used with Canon digital cameras. The camcorder does not support the program.

Uninstalling the TWAIN Driver/WIA Driver

- 1** Connect the camcorder to the computer (📖 26).
- 2** If a window for selecting an application program or the **Scanners and Cameras Wizard** appears, click **[Cancel]**. If **ZoomBrowser EX** started, close it.
- 3** Click the **Windows [Start]** menu and select **[Settings]** and **[Control Panel]**.
- 4** Double-click the **[Scanners and Cameras]** icon.
If you cannot find the **[Scanners and Cameras]** icon, see *TWAIN Driver/WIA Driver Uninstallation* (📖 96).
- 5** **Windows 98/Windows 2000:**
 1. Delete **[Canon Camera]** from the **[Scanners and Cameras Properties]** list.
 2. Click **[OK]** to close the window.
 3. Turn the camcorder **POWER** switch to **OFF** and remove the **USB** cable from the computer.
 4. Click the **Windows [Start]** menu and select **[Programs]**, **[Canon Utilities]**, **[DV TWAIN Driver x.x]** and **[TWAIN Driver Uninstall]**.
A version number appears in place of "x.x".**Windows Me:**
 1. Delete the camcorder icon from the **[Scanners and Cameras]** folder.
 2. Click **[OK]** to close the window.
 3. Click the **Windows [Start]** menu and select **[Programs]**, **[Canon Utilities]**, **[DV WIA Driver x.x]** and **[WIA Driver Uninstall]**.
A version number appears in place of "x.x".
- 6** When the **Confirm Uninstall** window appears, click **[OK]**.
The uninstall process starts.
- 7** When the **Maintenance Complete** window appears, click **[Finish]**.

Connection

? Camcorder is not recognized when connected to the computer.

→ Computer does not support the USB interface.

The USB interface is not supported for computer not in compliance with the following requirements. Acquire the necessary system to use the USB interface.

Requirements: Built-in USB port on a system pre-installed with Windows 98, Windows Me, Windows 2000, or Windows XP.

→ There is no memory card in the camcorder.

Insert a memory card into the camcorder.

→ The camcorder is not set to the correct mode.

Turn the POWER switch to PLAY (VCR)/PLAY and move the TAPE/CARD switch to CARD.

→ Camcorder is not correctly connected to the computer.

Read *Connecting the Camcorder to a Computer* (📖 26) and check the connection.

Ensure that you are using the correct cable and that its connectors are in good shape.

→ If you are experiencing operational problems, detach the USB cable from the camcorder and computer and terminate the connection. Restart the computer and then reconnect the camcorder.

→ TWAIN Driver or WIA Driver is not installed properly.

First uninstall the TWAIN/WIA Driver, then reinstall the driver from the DIGITAL VIDEO SOLUTION DISK (remove the check marks from the other programs when prompted to select the programs to be installed).

ZoomBrowser EX Operation

? Cannot download images

→ The camcorder is not set to the correct mode.

Turn the POWER switch to PLAY (VCR)/PLAY and move the TAPE/CARD switch to CARD.

? Image files or folders do not appear in ZoomBrowser EX.

→ Images or folders shown in ZoomBrowser EX and the actual file contents may be different when an image file has been moved or copied using Windows functions or edited with a separate program.

Click the [View] menu and select [Refresh Current Folder].

Driver Installation

? Cannot install the TWAIN Driver/WIA Driver correctly.

→ Does the system have a built-in USB port and did it come with Windows 98/Windows Me/Windows 2000 preinstalled?

→ Camcorder is not correctly connected to the computer.

Read *Connecting the Camcorder to a Computer* (📖 26) and check the connection.

Ensure that you are using the correct cable and that its connectors are in good shape.

- Are you using the power adapter to power the camcorder?
- If the problem is not mentioned above, the TWAIN Driver/WIA Driver may not have been recognized by Windows.

Uninstall and reinstall the driver.

TWAIN Driver/WIA Driver Uninstallation

If you had problems uninstalling the driver, use the following procedures to remove it.



The [Inf] folder contains numerous files that are critical to the computer's operation. Be extremely careful not to delete the wrong files. If you delete the wrong file, you may be unable to restart Windows.



Use the procedures below for the following circumstances too.

- If you do not find [Scanners and Cameras] in the [Control Panel] or [Printers and Other Hardware].
- If [Canon Camera] or your camcorder model name does not appear in the [Scanners and Cameras Properties] or [Scanners and Cameras].
- If you connected the camcorder to the computer via the USB cable before installing the Digital Video Software.

Windows 98/Windows Me

Leave the camcorder connected to the computer.

- 1** Click the Windows [Start] menu and select [Settings] and [Control Panel].
- 2** Double-click the [System] icon.
The [System Properties] dialog appears.
- 3** Click the [Device Manager] tab.
- 4** If [Canon Camera] appears under the [Other Devices] and/or [Imaging Devices] categories, use the following procedures to delete it.
 1. Select [Canon Camera] and click [Remove].
 2. In the confirmation dialog, click [OK].
 3. Click [OK] to close the [System Properties] dialog.
- 5** Double-click the [My Computer] icon on the desktop followed by the [C:] drive and the [Windows] and [Inf] folders.
If the [Inf] Folder Is Not Visible in the [Windows] Folder
 1. Windows 98: Click the [View] menu and select [Folder Options].
Windows Me: Click the [Tools] menu and select [Folder Options].
 2. Click the [View] tab.

3. Windows 98: Set the [Hidden files] section to [Show all files].
Windows Me: Set the [Hidden files and folders] section to [Show hidden files and folders].
4. Click [OK].
This makes the [Inf] folder and files in the [Inf] folder visible.

E

6 Find and delete the [Drvdata.bin] and [Drvidx.bin] files.

7 In the [Inf] folder, double-click [Other] folder to open it.

8 Find and delete the [Canon.IncCAPxxx.inf] and [Canon.IncCDVxxx.inf] file.

- The xxx represents numerals.
- If the above file is not contained in the [Other] folder, you do not need to delete anything.

Windows 2000

Leave the camcorder connected to the computer.

1 Click the Windows [Start] menu and select [Settings] and [Control Panel].

2 Double-click the [System] icon.

3 Click the [Hardware] tab.

4 Click the [Device Manager] button.

5 If [Canon Camera] or your camcorder model name appears under the [Other Devices] and/or [Imaging Devices] categories, use the following procedures to delete it.

1. Select [Canon Camera] or the name of the camcorder model, right-click the mouse button and select [Delete].
2. In the confirmation dialog, click [OK].
3. Click [OK] to close the [System Properties] dialog.
Remove all copies of [Canon Camera] or your camcorder model name that appear in the [Other Devices] or [Imaging Devices] categories, or that appear more than once in one category.

6 Double-click the [My Computer] icon on the desktop, followed by the [C:] drive, and the [Winnt] and [Inf] folders. If the [Inf] Folder Is Not Visible in the [Winnt] Folder

Use the following procedures to show all files and folders.

1. Click the [Tools] menu and select [Folder Options].
2. Click the [View] tab.
3. In the [Advanced setting] section, set the [Hidden files and folders] category to the [Show hidden files and folders] option.
If [Hide extensions for known file types] is selected, remove its check mark.
4. Click [OK] to close the dialog.
This makes the [Inf] folder and the files in the [Inf] folders visible.

7 Look for the file for Canon digital camcorders starting with [Oem*].

- A number such as “0” or “1” will appear in place of the asterisk (*) above. You will also find another file called [Oem*.pnf], which will have the same number as the [Oem*.inf] file. The two constitute one set.
- There may be many file sets starting with “Oem”.
- If you double-click an [Oem*.inf] file, the Windows Notepad program will start and show the file contents. Click each [Oem*.inf] file until you find one that contains “*** Canon Camera Driver Setup File***” in its first line. When you find the correct file, note down its name and close the Notepad window.

8 Delete the [Oem*] file set.

Delete all [Oem*.inf] and [Oem*.pnf] files, taking great care to delete the correct files.

If You Were Using ZoomBrowser EX Version 2 or 3 (This manual explains version 5.x)

? Titles and comments added using a prior version than ZoomBrowser EX version 4 do not appear in ZoomBrowser EX 4 or higher.

→ Titles and comments added using a prior version of ZoomBrowser EX will not be displayed. Use the following procedure to display them.

1. In Windows Explorer, open the [Program] folder under the folder in which you installed ZoomBrowser EX 4 or higher (C:\Program Files\Canon\ZoomBrowser EX\Program).
2. Double-click [dbconverter.exe].
3. Select the database you were using until now (C:\Program Files\Canon\ZoomBrowser EX\Program) and click the [Start] button.
Please note that with ZoomBrowser EX 4 or higher, both titles and comments appear in the comment list.

? Cannot find the image folders saved with a prior version than ZoomBrowser EX 5.x.

→ Image folders saved under the [Program Files] folder (such as [Image Library One]) cannot be displayed in the Main Window's Folder Area of ZoomBrowser EX 4 or higher. Use the following procedure to display them.

1. In Windows Explorer, open the [Program Files] folder under the folder in which you installed ZoomBrowser EX 4 or higher (C:\Program Files\Canon\ZoomBrowser EX\Program\Image Library One).
2. Select the image folder you wish to display and copy the folder to a different destination.

E

Windows



CANON INC.

U.S.A. ————— Canon U.S.A., Inc.

Canon Customer Care Center
Tel (US): 1-800-828-4040
(Mon.-Fri., 9 AM to 8 PM Eastern Time)

CANADA ————— Canon CANADA Inc.

Tel (Canada): 1-800-OK-CANON (1-800-652-2666)

ASIA ————— Canon Hongkong Co., Ltd.

19/F., The Metropolis Tower, 10 Metropolis Drive,
Hung Hom, Kowloon, Hong Kong
Phone: 852-2170-2828
Fax: 852-2723-9684

The information on this manual is verified as of January 1st, 2006.