

User Manual

Single Outlet Indoor Smart Plug, Works with Alexa only, White 1 pack/2 pack/4 pack

Manuel de l'utilisateur

Prise intelligente d'intérieur à prise unique, fonctionne avec Alexa uniquement, blanche, paquet de 1/ paquet de 2/paquet de 4

Manual del usuario

Tomacorriente inteligente de interior de una toma, solo funciona con Alexa, paquete de 1/paquete de 2/ paquete de 4, Blanco

BOCL9C4PYT, BOCL9CG87N, BOCL9D9HM4

Contents

Safety Instructions.....	3
Package Contents	3
Compatibility.....	3
Parts Overview	4
Set Up the Smart Plug.....	4
Alternative Setup Methods	4
Using the Smart Plug.....	5
Troubleshooting	6
My smart plug won't connect to Alexa.....	6
My connected device won't turn on/off with the Alexa app.....	6
I can't change my smart plug settings.....	6
If I lose the Quick Setup Guide or no barcode is available, how can I set up my smart plug?	6
Error code (-1:-1:-1) displays on the screen.....	6
Specifications.....	6
Trademarks	7
FCC – Supplier's Declaration of Conformity.....	7
FCC Compliance Statement	7
FCC Interference Statement	7
Canada IC Notice	7
Feedback and Help	7

Safety Instructions



Read these instructions carefully and retain them for future use. If this smart plug is passed to a third party, then these instructions must be included.

When using smart plugs, basic safety precautions should always be followed to reduce the risk of fire, electric shock, and/or injury to persons including the following:

⚠ WARNING

- ▶ The total current limit of the device is 15 amps. To avoid damage, do not exceed the 15-amp limit. If a direct short is created on the output, the smart plug will be damaged and no longer function.
- ▶ Do not disassemble the product or make repairs yourself. You run the risk of electric shock and voiding the limited warranty. If you need service, please contact customer service.
- ▶ Make sure to use this product together with a 15A circuit breaker or fuse in the upstream circuit.
- ▶ The applicable requirements must be observed during installation. Failure to observe the requirements may result in damage to property and/or injury, or even danger of death.
- ▶ Observe the technical data, in particular the maximum permissible switching power of the relay and the type of product to be connected, before connecting a product. All load information relates to ohmic loads. The device should only be loaded to the specified power limit. Overloading may result in destruction of the device, fire, or an electrical accident. Among other things, reliable switching off of the connected product cannot be guaranteed.
- ▶ Devices with electronic power supplies (for example, televisions or high voltage LED lights) do not constitute an ohmic load. They may generate start-up currents of more than 100A. Switching such products results in premature wear on the integrated relay. As a result, it is possible that the connected product may not reliably switch off.
- ▶ Do not connect devices which can cause fires or other damage if switched on unsupervised (for example, irons).
- ▶ Always unplug the device from the smart plug before making changes to the device.
- ▶ Always lay the cables of connected devices in such a way that they cannot pose a hazard to people or pets.
- ▶ The standards and directives applicable in your country must be observed during planning, setup, operation, and maintenance.
- ▶ Do not use the smart plug with power strips or with extension cables.
- ▶ Do not use the smart plug for disconnection. The load is not electrically isolated from the mains.
- ▶ Do not plug smart plugs into one another.
- ▶ The smart plug is only de-energized when it is removed from the socket.

Intended Use

- ▶ For indoor use only.
- ▶ Do not use in wet locations.

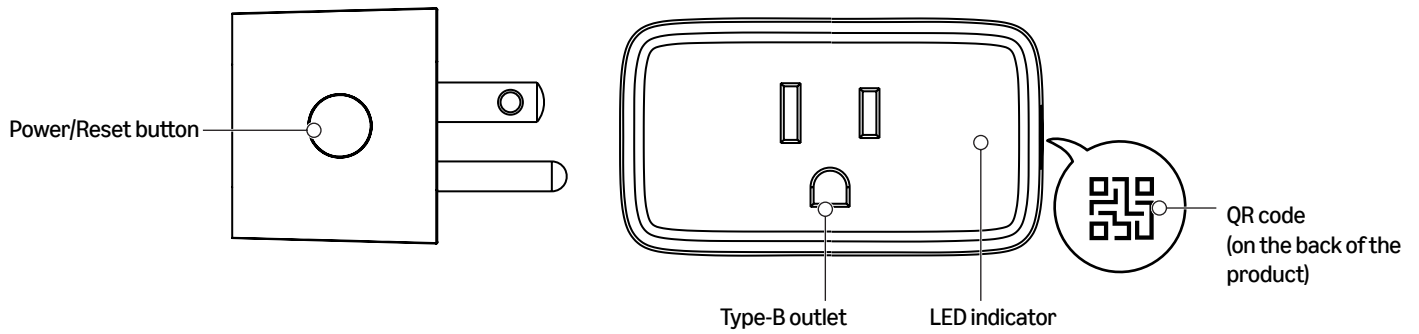
Package Contents

- ▶ B0CL9C4PYT: Smart plug (x1)
- ▶ B0CL9CG87N: Smart plugs (x2)
- ▶ B0CL9D9HM4: Smart plugs (x4)
- ▶ Safety Manual
- ▶ Quick Setup Guide

Compatibility

- ▶ 2.4GHz Wi-Fi network
- ▶ North American (Type-B) grounded outlet
- ▶ Connected device with 15A (Resistive Load) max output
- ▶ iOS/Android/Fire OS device with the Alexa app

Parts Overview



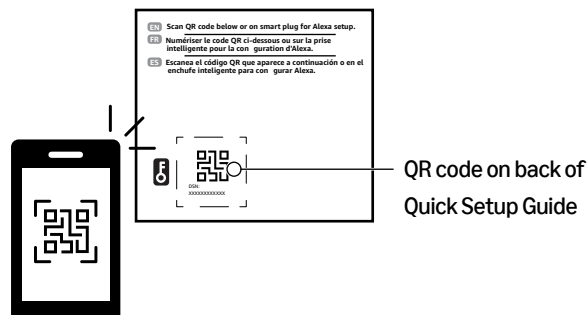
Set Up the Smart Plug

You can set up the smart plug with the QR code on the back of your printed Quick Setup Guide (recommended) or on the back of the product. You can also set it up without a QR code.

Set Up with the Quick Setup Guide QR Code (Recommended)

1. Download the latest version of the Alexa app from the app store, then log in.
2. Plug in the Amazon Basics smart plug.
3. In the Alexa app, tap (More) from the bottom menu, then tap **Add Device**.
4. Tap **Plug**, then tap **Amazon Basics**.
5. Follow the steps in the Alexa app to complete setup. When prompted, scan the QR code on the back of your printed Quick Setup Guide. If you have more than one smart plug and are scanning the QR code in your Quick Setup Guide, match the DSN number on the smart plug with the QR code.

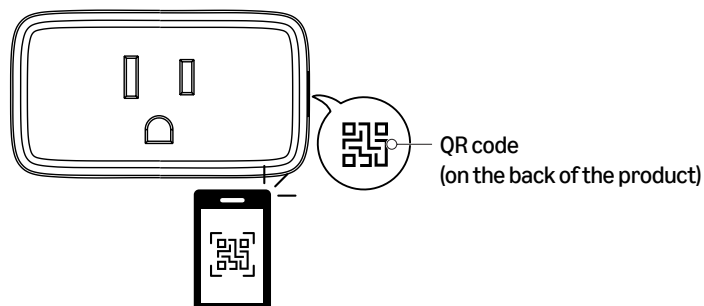
NOTICE Do not scan the barcode on packaging. If the barcode scan fails, refer to “Alternative Setup Methods” on page 4.



Alternative Setup Methods

Option 1: Set Up with the QR Code on the Back of the Product

1. Download the latest version of Alexa app from the app store, and log in.
2. Plug in the Amazon Basics smart plug.
3. In the Alexa app, tap (More) from the bottom menu, then tap **Add Device**.
4. Tap **Plug**, then tap **Amazon Basics**.
5. Follow the steps in the Alexa app to complete setup. When prompted, scan the QR code on the back of the product.



NOTICE Do not scan the barcode on packaging. If the barcode scan fails or you lose the Quick Setup Guide, refer to “Option 2: Set Up without the Barcode” on page 5.

Option 2: Set Up without the Barcode

Use these instructions if the QR code setup does not work.

1. Plug in the Amazon Basics smart plug.
2. In the Alexa app, tap ☰ (More) from the bottom menu, then tap **Add Device**.
3. Tap **Plug**, then tap **Amazon Basics**.
4. When prompted to scan the barcode, tap **DON'T HAVE A BARCODE?**
5. Tap **NEXT**, then follow the on-screen instructions to complete setup.

Understanding the LED

Indicator	Description
LED lights red for 1 minute	Smart Plug is unregistered
LED blinks red quickly for 1 minute	Smart Plug is disconnected
LED lights green for 3 seconds	Smart Plug is connected
LED blinks red and green alternately	Smart plug is reset to factory defaults
LED blinks green rapidly for 5 minutes	Smart Plug is ready for setup
LED is off	Smart Plug is off

Using the Smart Plug

- ▶ Press the power/reset button to turn the smart plug (and connected device) on or off.
- ▶ Use the Alexa app to turn the smart plug on/off remotely, set schedules, and more.
- ▶ Use the voice control on your Amazon Alexa. For example, you can say, “Alexa, turn on First Plug.”

Reset to Factory Defaults

Press and hold the power/reset button for 10 seconds until the indicator blinks red and green alternately.

Troubleshooting

If the smart plug is not functioning properly, try the following solutions.

Problem	Solutions
My smart plug won't connect to Alexa.	<ul style="list-style-type: none"> ▶ Make sure that your phone/tablet and the Alexa app are updated to the latest software version. ▶ Move your phone/tablet closer to your smart plug. ▶ Make sure that your phone/tablet and smart plug are connected to the same 2.4GHz Wi-Fi network. The smart plug is not compatible with 5GHz networks. ▶ If you have a dual Wi-Fi router and both network signals have the same name, rename one and try reconnecting to the 2.4GHz network. ▶ Make sure that you scan the correct QR code provided in your Quick Setup Guide or on the smart plug. If you have more than one smart plug and are scanning the QR code in your Quick Setup Guide, match the DSN number on the smart plug to the QR code. ▶ Factory reset your smart plug. See "Reset to Factory Defaults" on page 5.
My connected device won't turn on/off with the Alexa app.	<ul style="list-style-type: none"> ▶ Make sure that the device connected to the smart plug is turned on. For example, if you connected a lamp, turn the lamp's power switch to the "on" position. ▶ Make sure that your phone/tablet and smart plug are connected to the same Wi-Fi network. ▶ Reset your smart plug to factory defaults, then set up the smart plug with Alexa again. See "Set Up the Smart Plug" on page 4.
I can't change my smart plug settings.	<ul style="list-style-type: none"> ▶ Reset your smart plug to factory defaults, then set up the smart plug with Alexa again. See "Set Up the Smart Plug" on page 4.
If I lose the Quick Setup Guide or no barcode is available, how can I set up my smart plug?	<ul style="list-style-type: none"> ▶ You can set up your device via two alternative setup methods. The instructions can be found in "Alternative Setup Methods" on page 4.
Error code (-1:-1:-1:-1) displays on the screen.	<ul style="list-style-type: none"> ▶ Make sure your phone has Bluetooth turned on throughout the entire setup process and the device you are trying to setup is in pairing mode. Restart your device by powering it off and on, and then set up again.

Specifications

Supply Voltage	120V AC, 60Hz
Max. Current	15A
Max. Power Consumption	1,800W (Resistive Load)
Electric Quantity Detection	Not supported
Ambient Temperature	-22° to 104°F (-30° to 40°C)
Storage Temperature	-4° to 140°F (-20° to 60°C)
Operating Humidity	10% to 90% RH non-condensing
Wi-Fi	2.4GHz network, 802.11 b/g/n
Wireless Protocol	Wi-Fi + Bluetooth (Bluetooth only does pairing)
Protection Class	IP20
Authentication	cETLus/FCC ID IC

Trademarks



The Wi-Fi CERTIFIED™ Logo is a registered trademark of Wi-Fi Alliance®.



The Bluetooth® word mark and logos are registered trademarks owned by Bluetooth SIG, Inc. and any use of such marks by Amazon.com Services LLC is under license. Other trademarks and trade names are those of their respective owners.

FCC – Supplier's Declaration of Conformity

Unique Identifier	BOCL9C4PYT–Amazon Basics Single Outlet Indoor Smart Plug, Works with Alexa only, White 1 pack BOCL9CG87N–Amazon Basics Single Outlet Indoor Smart Plug, Works with Alexa only, White 2 pack BOCL9D9HM4–Amazon Basics Single Outlet Indoor Smart Plug, Works with Alexa only, White 4 pack
Responsible Party	Amazon.com Services LLC.
U.S. Contact Information	410 Terry Ave N. Seattle, WA 98109, United States
Telephone Number	(206) 266-1000

FCC Compliance Statement

- This device complies with Part 15 of the FCC Rules. Operation is subject to the two following conditions:
 - this device may not cause harmful interference, and
 - this device must accept any interference received, including interference that may cause undesired operation.
- Changes or modifications not expressly approved by the party responsible for compliance could void the user's authority to operate the equipment.

FCC Interference Statement

This equipment has been tested and found to comply with the limits for a Class B digital device, pursuant to part 15 of the FCC Rules. These limits are designed to provide reasonable protection against harmful interference in a residential installation.

This equipment generates, uses, and can radiate radio frequency energy and, if not installed and used in accordance with the instructions, may cause harmful interference to radio communications. However, there is no guarantee that interference will not occur in a particular installation. If this equipment does cause harmful interference to radio or television reception, which can be determined by turning the equipment off and on, the user is encouraged to try to correct the interference by one or more, of the following measures:

- Reorient or relocate the receiving antenna.
- Increase the separation between the equipment and the receiver.
- Connect the equipment into an outlet on a circuit different to which the receiver is connected.
- Consult the dealer or an experienced radio/TV technician for help.

RF Warning Statement: This equipment must be installed and operated in accordance with provided instructions and the antenna(s) used for this transmitter must be installed to provide a separation distance of at least 20 cm from all persons and must not be co-located or operating in conjunction with any other antenna or transmitter.

Canada IC Notice

- This device contains license-exempt transmitter(s) / receiver(s) that comply with Innovation, Science and Economic Development Canada's License-exempt RSS(s). Operation is subject to the following two conditions:
 - this device may not cause interference, and
 - this device must accept any interference, including interference that may cause undesired operation of the device.
- This equipment complies with Industry Canada radiation exposure limits set forth for an uncontrolled environment.
- This Class B digital apparatus complies with Canadian CAN ICES (B) / NMB (B) standard.
- This equipment complies with IC RSS-102 radiation exposure limits set forth for an uncontrolled environment. This transmitter must not be co-located or operating in conjunction with any other antenna or transmitter. This equipment should be installed and operated with a minimum distance of 8 in. (20 cm) between the radiator and any part of your body.

Feedback and Help

We would love to hear your feedback. Please consider leaving a rating and review through your purchase orders. If you need help with your product, log in to your account and navigate to the customer service / contact us page.

Table des matières

Consignes de sécurité	9
Contenu de l'emballage	9
Compatibilité	9
Aperçu des pièces	10
Installation de la prise intelligente.....	10
Méthodes alternatives de configuration.....	10
Utilisation de la prise intelligente.....	11
Problèmes et solutions	12
La prise intelligente ne se connecte pas à Alexa.....	12
Mon appareil connecté ne se met pas en marche ni s'arrête avec l'application Alexa.....	12
Je ne peux pas modifier les paramètres de ma prise intelligente.....	12
Si le guide d'installation rapide est égaré ou si aucun code-barres n'est disponible, comment configurer la prise intelligente?	12
Code d'erreur (-1:-1:-1:-1) s'affiche sur l'écran.....	12
Spécifications.....	12
Marques commerciales	12
Déclaration de conformité FCC du fournisseur	13
Déclaration de conformité FCC.....	13
Déclaration FCC sur les interférences.....	13
Déclaration d'Industrie Canada.....	13
Vos avis et aide.....	13

Consignes de sécurité



Lire ces instructions avec soin et les conserver pour toute référence ultérieure. Si cette prise intelligente est fournie à une partie tierce, ces instructions doivent être incluses.

Lors de l'utilisation de prises intelligentes, des précautions élémentaires doivent toujours être observées pour réduire le risque d'incendie, de choc électrique et de blessures pour les personnes, notamment :

⚠ AVERTISSEMENT

- ▶ La limite de courant totale de l'appareil est de 15 ampères. Pour éviter tout dommage, ne pas dépasser les limites de 15 A. Si un court-circuit direct est créé sur la sortie, la prise intelligente sera endommagée et ne fonctionnera plus.
- ▶ Ne pas démonter le produit ni faire soi-même des réparations. Un risque de choc électrique peut se produire ainsi que l'annulation de la garantie limitée. Communiquer avec le service clientèle pour toute assistance.
- ▶ Veiller à utiliser ce produit avec un disjoncteur ou un fusible de 15 A dans le circuit en amont.
- ▶ Les exigences applicables doivent être observées pendant l'installation. Le non-respect des exigences peut entraîner des dommages matériels ou des blessures, voire un danger de mort.
- ▶ Observer les données techniques, en particulier la puissance de commutation maximale autorisée du relais et le type de produit à connecter, avant de connecter un produit. Toutes les informations relatives à la charge se rapportent à des charges ohmiques. L'appareil ne doit être chargé que jusqu'à la limite de puissance spécifiée. Une surcharge peut entraîner la destruction de l'appareil, un incendie ou un accident électrique. Entre autres, il n'est pas possible de garantir une mise hors tension fiable du produit connecté.
- ▶ Les appareils dotés d'une alimentation électronique (par exemple, les téléviseurs ou les lampes à DEL à haute tension) ne constituent pas une charge ohmique. Ils peuvent générer des courants de démarrage de plus de 100 A. La commutation de tels produits entraîne une usure prématurée du relais intégré. Par conséquent, il est possible que le produit connecté ne s'éteigne pas de manière fiable.
- ▶ Ne pas connecter d'appareils susceptibles de provoquer des incendies ou d'autres dommages s'ils sont allumés sans surveillance (par exemple, des fers à repasser).
- ▶ Débrancher l'appareil de la prise intelligente avant d'effectuer toutes modifications sur l'appareil.
- ▶ Toujours poser les câbles des appareils connectés de manière à ce qu'ils ne constituent pas un danger pour les personnes ou les animaux domestiques.
- ▶ Les normes et directives en vigueur dans le pays doivent être respectées lors de la planification, de l'installation, du fonctionnement et de l'entretien.
- ▶ Ne pas utiliser la prise intelligente avec une barre multiprises ou des câbles de rallonge.
- ▶ Ne pas utiliser la prise intelligente pour la déconnexion. La charge n'est pas isolée électriquement des prises principales.
- ▶ Ne pas brancher la prise intelligente dans une autre.
- ▶ La prise intelligente n'est mise hors tension que lorsqu'elle retirée de la prise secteur.

Utilisation prévue

- ▶ Pour utilisation à l'intérieur uniquement.
- ▶ Ne pas l'utiliser dans des endroits mouillés.

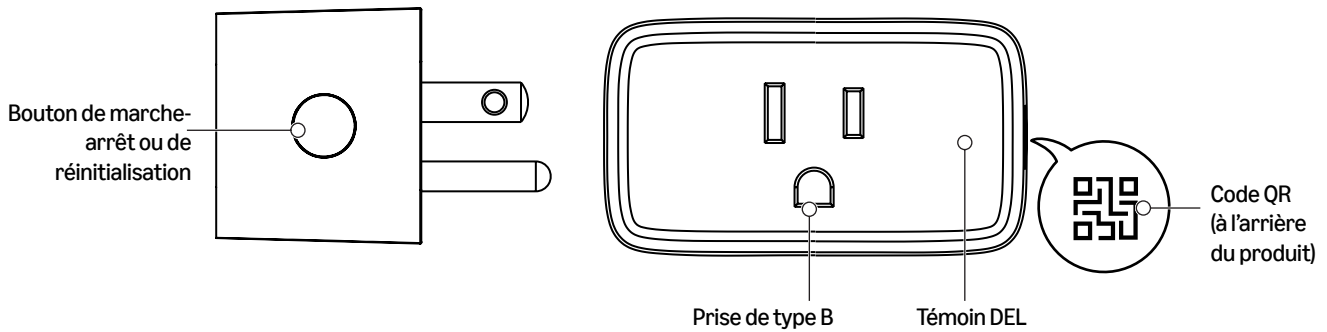
Contenu de l'emballage

- ▶ B0CL9C4PYT : Prise intelligente (1)
- ▶ B0CL9CG87N : Prises intelligentes (2)
- ▶ B0CL9D9HM4 : Prises intelligentes (4)
- ▶ Manuel de sécurité
- ▶ Guide d'installation rapide

Compatibilité

- ▶ Réseau Wi-Fi de 2,4 GHz
- ▶ Une prise secteur mise à la terre de type Amérique du Nord (Type B)
- ▶ Des appareils connectés avec une sortie maximale de 15 A (charge résistive)
- ▶ Des appareils iOS/Android/Fire OS avec l'application Alexa

Aperçu des pièces



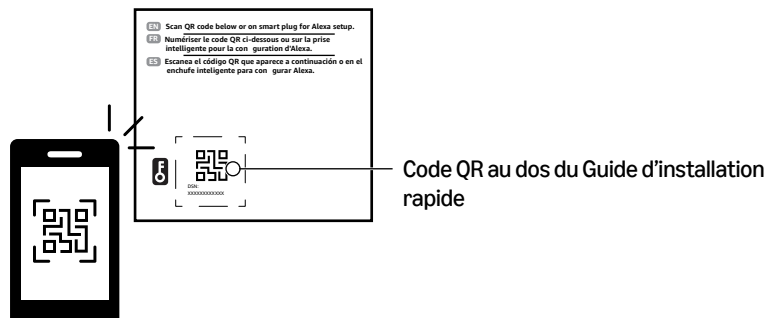
Installation de la prise intelligente

La prise intelligente peut être configurée avec le code QR à l'arrière du Guide d'installation rapide imprimé (recommandé) ou au dos du produit. Il est aussi possible d'effectuer le réglage sans un code QR.

Configuration avec le code QR du Guide d'installation rapide (Recommandé)

1. Télécharger la dernière version de l'application Alexa dans la boutique App Store et se connecter.
2. Brancher la prise intelligente d'Amazon Basics.
3. Dans l'application Alexa, appuyez sur ≡ (Plus) dans le menu du bas, puis appuyez sur **Ajouter un appareil**.
4. Toucher **Plug** (Prise), puis toucher **Amazon Basics**.
5. Suivre les étapes dans l'application Alexa afin de terminer la configuration. Quand il est demandé, balayer le code QR à l'arrière du Guide d'installation rapide imprimé. Dans le cas où il y a plus d'une prise intelligente et que le code QR dans le Guide d'installation rapide est numérisé, faire correspondre le numéro DSN de la prise intelligente avec le code QR.

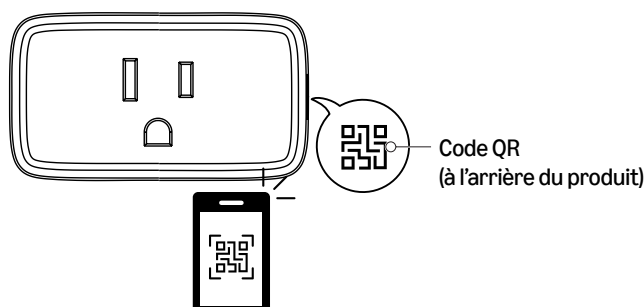
REMARQUE Ne pas balayer le code-barres sur l'emballage. Si le balayage du code-barres ne fonctionne pas, se référer à «Méthodes alternatives de configuration» on page 10.



Méthodes alternatives de configuration

Option 1: Configuration avec le code QR au dos du produit

1. Télécharger la dernière version de l'application Alexa dans la boutique App Store et se connecter.
2. Brancher la prise intelligente d'Amazon Basics.
3. Dans l'application Alexa, appuyez sur ≡ (Plus) dans le menu du bas, puis appuyez sur **Ajouter un appareil**.
4. Toucher **Plug** (Prise), puis toucher **Amazon Basics**.
5. Suivre les étapes dans l'application Alexa afin de terminer la configuration. Quand demandé, balayer le code QR au dos du produit.



REMARQUE Ne pas balayer le code-barres sur l'emballage. Si le balayage du code à barres ne fonctionne pas ou si le Guide d'installation rapide est égaré, se référer à «Option 2 : Configuration sans le code-barres» on page 11.

Option 2 : Configuration sans le code-barres

Utiliser ces instructions si la configuration avec le code QR ne fonctionne pas.

1. Brancher la prise intelligente d'Amazon Basics.
2. Dans l'application Alexa, appuyez sur ☰ (Plus) dans le menu du bas, puis appuyez sur **Ajouter un appareil**.
3. Toucher **Plug** (Prise), puis toucher **Amazon Basics**.
4. Quand il est demandé de balayer le code-barres, toucher **DON'T HAVE A BARCODE?** (Vous n'avez pas de code-barres?).
5. Toucher **NEXT** (Suivant) puis suivre les instructions à l'écran afin de procéder à la configuration.

Signification de la DEL

Témoin	Description
La DEL s'allume en rouge pendant 1 minute	La prise intelligente n'est pas enregistrée
La DEL clignote en rouge rapidement pendant 1 minute	La prise intelligente est déconnectée
La DEL s'allume en vert pendant 3 secondes	La prise intelligente est connectée
La DEL clignote alternativement en rouge et en vert	La prise intelligente est réinitialisée aux paramètres d'usine
La DEL clignote en vert rapidement pendant 5 minutes	La prise intelligente est prête pour la configuration.
La DEL est éteinte	La prise intelligente est hors tension

Utilisation de la prise intelligente

- ▶ Appuyer sur le bouton marche-arrêt ou réinitialisation pour activer ou désactiver la prise intelligente (et l'appareil connecté).
- ▶ Utiliser l'application Alexa pour mettre la prise intelligente sous ou hors tension, planifier des programmes, entre autres.
- ▶ Utiliser le contrôle vocal sur Alexa d'Amazon. Par exemple, il est possible de dire « Alexa met la première prise en marche ».

Réinitialisation aux paramètres d'usine

Appuyer sur le bouton de marche-arrêt ou réinitialisation pendant 10 secondes jusqu'à ce que le témoin d'état clignote alternativement en rouge et en vert.

Problèmes et solutions

Si la prise intelligente ne fonctionne pas correctement, essayer les solutions suivantes.

Problème	Solutions
La prise intelligente ne se connecte pas à Alexa.	<ul style="list-style-type: none"> ▶ Vérifier que le téléphone ou la tablette et l'application Alexa disposent de la dernière version du logiciel. ▶ Déplacer le téléphone ou la tablette à proximité de la prise intelligente. ▶ Vérifier que le téléphone ou la tablette et la prise intelligente sont connectés sur le même réseau Wi-Fi de 2,4 GHz. Cette prise intelligente n'est pas compatible avec les réseaux de 5 GHz. ▶ En cas d'utilisation d'un routeur Wi-Fi bande et les deux signaux ont le même nom, en renommer un et essayer une reconnexion à la fréquence de réseau de 2,4 GHz. ▶ S'assurer de numériser le bon code QR fourni dans le Guide d'installation rapide ou sur la prise intelligente. Dans le cas où il y a plus d'une prise intelligente et que le code QR dans le Guide d'installation rapide est numérisé, faire correspondre le numéro DSN de la prise intelligente avec le code QR. ▶ Réinitialiser la prise intelligente. Voir «Réinitialisation aux paramètres d'usine» on page 11.
Mon appareil connecté ne se met pas en marche ni s'arrête avec l'application Alexa.	<ul style="list-style-type: none"> ▶ Vérifier que l'appareil connecté à la prise intelligente est sous tension. Par exemple, si une lampe est connectée, mettre l'interrupteur de la lampe sur la position « marche ». ▶ Vérifier que le téléphone ou la tablette et la prise intelligente sont connectés sur le même réseau Wi-Fi. ▶ Réinitialiser la prise intelligente aux paramètres d'usine, puis réinstaller la prise intelligente avec Alexa. Voir «Installation de la prise intelligente» on page 10.
Je ne peux pas modifier les paramètres de ma prise intelligente.	<ul style="list-style-type: none"> ▶ Réinitialiser la prise intelligente aux paramètres d'usine, puis réinstaller la prise intelligente avec Alexa. Voir «Installation de la prise intelligente» on page 10.
Si le guide d'installation rapide est égaré ou si aucun code-barres n'est disponible, comment configurer la prise intelligente?	<ul style="list-style-type: none"> ▶ Il est possible de configurer l'appareil en utilisant deux méthodes alternatives. Les instructions peuvent être trouvées sur «Méthodes alternatives de configuration» on page 10.
Code d'erreur (-1:-1:-1:-1) s'affiche sur l'écran.	<ul style="list-style-type: none"> ▶ S'assurer que Bluetooth est activé sur le téléphone tout au long du processus de configuration et que l'appareil en train d'être configuré est en mode de couplage. Redémarrer l'appareil et le mettant sous et hors tension, et essayer de nouveau de le configurer.

Spécifications

Tension d'alimentation	120 V c.a., 60 Hz
Courant max.	15 A
Consommation d'électricité max.	1800 W (charge résistive)
Détection de la quantité d'électricité	Non pris en charge
Température ambiante	- 30° à 40 °C (- 22 à 104 °F)
Température de stockage	- 20° à 60 °C (- 4 à 140 °F)
Humidité de service	10 % à 90 % d'humidité relative (sans condensation)
Wi-Fi	Réseau de 2,4 GHz, 802.11 b/g/n
Protocole sans fil	Wi-Fi et Bluetooth (Bluetooth ne fait que le jumelage)
Catégorie de protection	IP20
Authentification	cETLus/FCC ID IC

Marques commerciales



Le logo Wi-Fi CERTIFIED^{MC} est une marque déposée de Wi-Fi Alliance^{MD}.



La marque verbale et les logos Bluetooth^{MD} sont des marques déposées appartenant à Bluetooth SIG, Inc. et l'utilisation de ces marques par Amazon.com Services LLC fait l'objet d'une licence. Les autres marques et noms commerciaux appartiennent à leurs propriétaires respectifs.

Déclaration de conformité FCC du fournisseur

Identifiant unique	BOCL9C4PYT – Prise intelligente d'intérieur à prise unique d'Amazon Basics, fonctionne avec Alexa uniquement, blanche, paquet de 1 BOCL9CG87N – Prise intelligente d'intérieur à prise unique d'Amazon Basics, fonctionne avec Alexa uniquement, blanche, paquet de 2 BOCL9D9HM4 – Prise intelligente d'intérieur à prise unique d'Amazon Basics, fonctionne avec Alexa uniquement, blanche, paquet de 4
Partie responsable	Amazon.com Services LLC.
Coordonnées du contact aux É.-U.	410 Terry Ave N. Seattle, WA 98109, États-Unis
Numéro de téléphone	(206) 266-1000

Déclaration de conformité FCC

- Cet appareil est conforme à l'article 15 du règlement de la FCC. Son fonctionnement est soumis aux deux conditions suivantes :
 - Ce périphérique ne doit pas émettre d'interférences préjudiciables, et
 - Ce périphérique doit accepter toutes les interférences reçues, y compris celles pouvant provoquer un fonctionnement préjudiciable.
- Tous changements ou modifications qui ne seraient pas expressément approuvés par les responsables des normes pourraient rendre nul le droit de l'utilisateur d'utiliser cet équipement.

Déclaration FCC sur les interférences

Cet équipement a été testé et déclaré conforme aux limitations prévues dans le cadre de la catégorie B des appareils numériques, définies par l'article 15 du règlement de la FCC. Ces limites ont pour but d'assurer une protection raisonnable contre les interférences préjudiciables dans une installation résidentielle.

Cet équipement génère, utilise et diffuse des ondes radio et, s'il n'est pas installé et utilisé conformément aux instructions dont il fait l'objet, il peut provoquer des interférences préjudiciables aux communications radio. Cependant, il n'est pas possible de garantir qu'aucune interférence ne se produira pour une installation particulière. Si cet équipement produit des interférences préjudiciables lors de réceptions radio ou télévisées, qui peuvent être détectées en éteignant puis en rallumant l'appareil, essayer de corriger l'interférence au moyen de l'une ou de plusieurs des mesures suivantes :

- réorienter ou déplacer l'antenne réceptrice;
- augmenter l'écartement de l'équipement par rapport au récepteur;
- brancher l'équipement sur une prise d'un circuit différent de celui sur lequel le récepteur est branché;
- contacter le revendeur ou un technicien radio ou télévision qualifié pour toute assistance.

Avertissement relatif aux radiofréquences : Cet équipement doit être installé et opéré selon des instructions fournies et les antennes utilisées pour cet émetteur doivent être installées pour fournir une distance de séparation d'au moins 20 cm de toutes personnes et ne doit pas être colocalisé ni fonctionner conjointement avec une autre antenne ou émetteur.

Déclaration d'Industrie Canada

- L'émetteur/récepteur exempt de licence contenu dans le présent appareil est conforme aux CNR d'Innovation, Sciences et Développement économique Canada applicables aux appareils radio exempts de licence. L'exploitation est autorisée aux deux conditions suivantes :
 - L'appareil ne doit pas produire de brouillage;
 - L'appareil doit accepter tout brouillage radioélectrique subi, même si le brouillage est susceptible d'en compromettre le fonctionnement.
- Cet équipement est conforme aux limitations prévues par Industrie Canada pour l'exposition aux irradiations dans le cadre d'un environnement d'accès libre.
- Cet appareil numérique de classe B est conforme à la norme ICES B/NMB (B) du Canada.
- Cet équipement est conforme aux limitations prévues par IC CNR-102 pour l'exposition aux irradiations dans le cadre d'un environnement d'accès libre. Cet émetteur ne doit pas être situé à proximité ou fonctionner simultanément avec une autre antenne ou émetteur. Cet équipement doit être installé et mis en fonctionnement à une distance minimale de 20 cm (8 po) entre le radiateur et le corps de l'utilisateur.

Vos avis et aide

Nous serions ravis de connaître votre avis. N'hésitez pas à attribuer une note et à nous faire part de vos commentaires par le biais de vos bons de commande. Si vous avez besoin d'aide concernant un produit, connectez-vous à votre compte et accédez à la page de contact du service client.

Contenido

Instrucciones de seguridad	15
Contenido del paquete	15
Compatibilidad	15
Descripción del producto	16
Configuración del tomacorriente inteligente.....	16
Métodos de configuración alternativos.....	16
Uso del tomacorriente inteligente	17
Solución de problemas.....	18
Mi tomacorriente inteligente no se conecta a Alexa.....	18
Mi dispositivo conectado no se enciende/apaga con la aplicación Alexa.....	18
No puedo cambiar la configuración de mi tomacorriente inteligente.....	18
Si pierdo la Guía de instalación rápida o no dispongo del código de barras, ¿cómo puedo configurar mi tomacorriente inteligente?	18
Código de error (-1:-1:-1) se muestra en la pantalla.	18
Especificaciones	18
Marcas	19
Comentarios y ayuda	19

Instrucciones de seguridad



Lea atentamente estas instrucciones y consérvelas para su uso futuro. Si este tomacorriente inteligente se cede a un tercero, deberán incluirse estas instrucciones.

Al utilizar tomacorrientes inteligentes, deben seguirse siempre las precauciones básicas de seguridad para reducir el riesgo de incendio, descarga eléctrica y/o lesiones a las personas, incluyendo las siguientes:

⚠ ADVERTENCIA

- ▶ El límite de corriente total del aparato es de 15 amperios. Para evitar daños, no supere el límite de 15 amperios. Si se crea un cortocircuito directo en la salida, el tomacorriente inteligente se dañará y dejará de funcionar.
- ▶ No desarme el producto ni lo repare usted mismo. Corre el riesgo de sufrir una descarga eléctrica y de anular la garantía limitada. Si necesita asistencia técnica, póngase en contacto con el servicio de atención al cliente.
- ▶ Asegúrese de utilizar este producto junto con un disyuntor o fusible de 15 A en el circuito ascendente.
- ▶ Durante la instalación deben respetarse los requisitos aplicables. El incumplimiento de los requisitos puede provocar daños materiales y/o lesiones, o incluso peligro de muerte.
- ▶ Antes de conectar un producto, tenga en cuenta los datos técnicos, en particular la potencia de conmutación máxima admisible del relé y el tipo de aparato que va a conectar. Toda la información sobre cargas se refiere a cargas óhmicas. El dispositivo sólo debe cargarse hasta el límite de potencia especificado. La sobrecarga puede provocar la destrucción del aparato, un incendio o un accidente eléctrico. Entre otras cosas, no se puede garantizar la desconexión fiable del producto conectado.
- ▶ Los aparatos con fuentes de alimentación electrónicas (por ejemplo, televisores o luces LED de alta tensión) no constituyen una carga óhmica. Pueden generar corrientes de arranque de más de 100 A. La conmutación de estos productos provoca un desgaste prematuro del relé integrado. Como resultado, es posible que el producto conectado no se apague de forma segura.
- ▶ No conecte aparatos que puedan provocar incendios u otros daños si se encienden sin vigilancia (por ejemplo, planchas).
- ▶ Desconecte siempre el dispositivo del enchufe inteligente antes de realizar cambios en él.
- ▶ Coloque siempre los cables de los dispositivos conectados de forma que no puedan representar un peligro para las personas o los animales domésticos.
- ▶ Durante la planificación, la instalación, el funcionamiento y el mantenimiento deben respetarse las normas y directivas vigentes en su país.
- ▶ No utilice el tomacorriente inteligente con barras de enchufe ni con cables de extensión.
- ▶ No utilice el tomacorriente inteligente para la desconexión. La carga no está aislada eléctricamente de la red.
- ▶ No conecte tomacorrientes inteligentes entre sí.
- ▶ El tomacorriente inteligente sólo se queda sin corriente cuando se retira del tomacorriente de pared.

Uso previsto

- ▶ Sólo para uso en interiores.
- ▶ No utilizar en lugares húmedos.

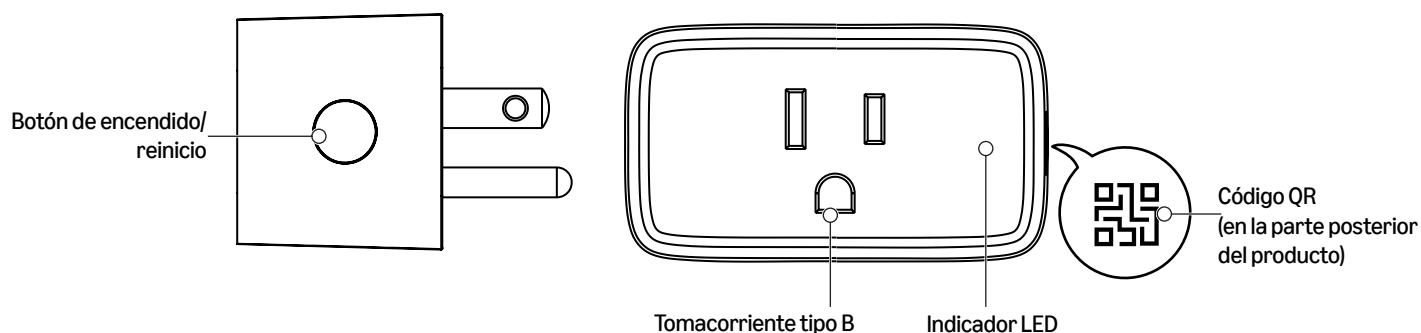
Contenido del paquete

- ▶ B0CL9C4PYT: Tomacorriente inteligente (1)
- ▶ B0CL9CG87N: Tomacorrientes inteligentes (2)
- ▶ B0CL9D9HM4: Tomacorrientes inteligentes (4)
- ▶ Manual de seguridad
- ▶ Guía de instalación rápida

Compatibilidad

- ▶ Red de Wi-Fi de 2.4 GHz
- ▶ Toma con conexión a tierra tipo B (Estados Unidos)
- ▶ Dispositivo conectado con una salida máxima de 15 A (carga resistiva)
- ▶ Dispositivo iOS/Android/Fire OS con la aplicación Alexa

Descripción del producto



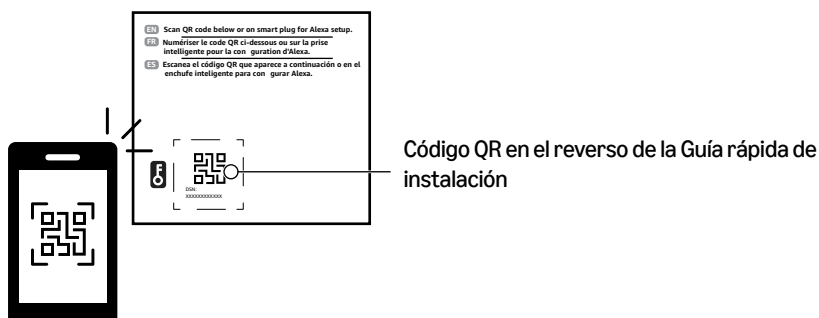
Configuración del tomacorriente inteligente

Puede configurar el tomacorriente inteligente con el código QR que aparece en la parte posterior de su copia impresa Guía de configuración rápida (recomendado) o en la parte posterior del producto. También puedes configurarlo sin el código QR.

Configuración con la Guía de configuración rápida Código QR (Recomendado)

1. Descargue la última versión de la aplicación Alexa de la tienda de aplicaciones e inicie su sesión.
2. Enchufe el tomacorriente inteligente de Amazon Basics.
3. En la aplicación Alexa, toca ☰ (Más) en el menú inferior y, a continuación, toca **Agregar dispositivo**.
4. Toque **Plug** (Tomacorriente) y, a continuación, toque **Amazon Basics**.
5. Siga los pasos de la aplicación Alexa para completar la configuración. Cuando se le pida, escanee el código QR que aparece en la parte posterior de la copia impresa Guía de configuración rápida. Si tiene más de un tomacorriente inteligente y está escaneando el código QR en su Guía de instalación rápida haga coincidir el número DSN del tomacorriente inteligente con el código QR.

AVISO No escanee el código de barras del embalaje. Si falla la lectura del código de barras, consulte “Métodos de configuración alternativos” on page 16.

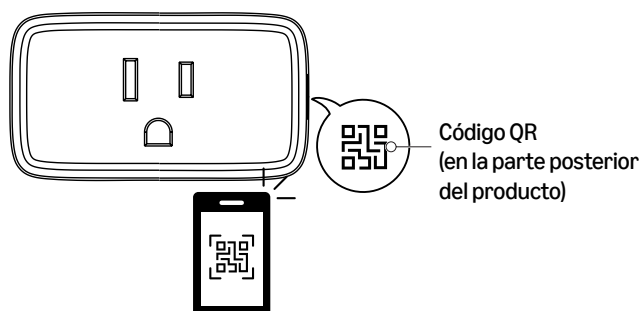


Métodos de configuración alternativos

Opción 1: Configuración con el código QR que aparece en la parte posterior del producto.

1. Descargue la última versión de la aplicación Alexa de la tienda de aplicaciones e inicie la sesión.
2. Enchufe el tomacorriente inteligente de Amazon Basics.
3. En la aplicación Alexa, toca ☰ (Más) en el menú inferior y, a continuación, toca **Agregar dispositivo**.
4. Toque **Plug** (Tomacorriente) y, a continuación, toque **Amazon Basics**.

- Siga los pasos de la aplicación Alexa para completar la configuración. Cuando se le solicite, escanee el código QR de la parte posterior del producto.



AVISO No escanee el código de barras del embalaje. Si el escaneo del código de barras falla o pierde el Guía de configuración rápida consulte "Opción 2: Configuración sin código de barras" on page 17.

Opción 2: Configuración sin código de barras

Utilice estas instrucciones si la configuración del código QR no funciona.

- Enchufe el tomacorriente inteligente de Amazon Basics.
- En la aplicación Alexa, toca ☰ (Más) en el menú inferior y, a continuación, toca **Agregar dispositivo**.
- Toque **Plug** (Tomacorriente) y, a continuación, toque **Amazon Basics**.
- Cuando se le pida que escanee el código de barras, toque **¿NO TIENE CÓDIGO DE BARRAS?**
- Toque **NEXT** (siguiente) y siga las instrucciones en pantalla para completar la configuración.

Interpretación del indicador LED

Indicador	Descripción
El LED se ilumina en rojo durante 1 minuto	El tomacorriente inteligente no está registrado
El LED parpadea rápidamente en rojo durante 1 minuto	El tomacorriente inteligente está desconectado
El LED se ilumina en verde durante 3 segundos	El tomacorriente inteligente está conectado
El LED parpadea en rojo y verde alternativamente	El tomacorriente inteligente se restablece a los valores predeterminados de fábrica
El LED parpadea en verde rápidamente durante 5 minutos	El tomacorriente inteligente está listo para configurarse
LED apagado	El tomacorriente inteligente está apagado

Uso del tomacorriente inteligente

- Pulse el botón de encendido/reinicio para encender o apagar el tomacorriente inteligente (y el dispositivo conectado).
- Use la app Alexa para encender y apagar el tomacorriente inteligente a distancia, establecer horarios y mucho más.
- Use el control de voz de su Amazon Alexa. Por ejemplo, puedes decir: "Alexa, enciende el primer enchufe"

Restablecimiento de los valores de fábrica

Mantenga pulsado el botón de encendido/reinicio durante 10 segundos hasta que el indicador parpadee en rojo y verde alternativamente.

Solución de problemas

Si el tomacorriente inteligente no funciona correctamente, pruebe las siguientes soluciones.

Problema	Soluciones
Mi tomacorriente inteligente no se conecta a Alexa.	<ul style="list-style-type: none"> ▶ Asegúrese de que su teléfono/tableta y la aplicación Alexa están actualizados a la última versión de software. ▶ Acerque el teléfono o la tableta al tomacorriente inteligente. ▶ Asegúrese de que el teléfono/tableta y el tomacorriente inteligente están conectados a la misma red Wi-Fi de 2.4 GHz. El tomacorriente inteligente no es compatible con redes de 5 GHz. ▶ Si tiene un enrutador WiFi doble y ambas señales de red tienen el mismo nombre, cambie el nombre de una e intente volver a conectarse a la red de 2.4 GHz. ▶ Asegúrese de escanear el código QR correcto proporcionado en su Guía de instalación rápida o en el tomacorriente inteligente. Si tiene más de un tomacorriente inteligente y está escaneando el código QR en su Guía de instalación rápida haga coincidir el número DSN del tomacorriente inteligente con el código QR. ▶ Restablezca su tomacorriente inteligente a los valores de fábrica. Refiérase a "Restablecimiento de los valores de fábrica" on page 17.
Mi dispositivo conectado no se enciende/apaga con la aplicación Alexa.	<ul style="list-style-type: none"> ▶ Asegúrese de que el dispositivo conectado al tomacorriente inteligente está encendido. Por ejemplo, si ha conectado una lámpara, ponga el interruptor de la lámpara en la posición de encendido ("on"). ▶ Asegúrese de que el teléfono/tableta y el tomacorriente inteligente están conectados a la misma red Wi-Fi. ▶ Restablezca el tomacorriente inteligente a los valores predeterminados de fábrica y, a continuación, vuelva a configurarlo con Alexa. Refiérase a "Configuración del tomacorriente inteligente" on page 16.
No puedo cambiar la configuración de mi tomacorriente inteligente.	<ul style="list-style-type: none"> ▶ Restablezca el tomacorriente inteligente a los valores predeterminados de fábrica y, a continuación, vuelva a configurarlo con Alexa. Refiérase a "Configuración del tomacorriente inteligente" on page 16.
Si pierdo la Guía de instalación rápida o no dispongo del código de barras, ¿cómo puedo configurar mi tomacorriente inteligente?	<ul style="list-style-type: none"> ▶ Puede configurar su dispositivo mediante dos métodos de configuración alternativos. Las instrucciones se encuentran en "Métodos de configuración alternativos" on page 16.
Código de error (-1:-1:-1:-1) se muestra en la pantalla.	<ul style="list-style-type: none"> ▶ Asegúrese de que el teléfono tiene el Bluetooth activado durante todo el proceso de configuración y de que el dispositivo que intenta configurar está en modo de emparejamiento. Reinicie su dispositivo apagándolo y encendiéndolo, y vuelva a configurarlo.

Especificaciones

Tensión de alimentación	120 V CA, 60 Hz
Máx. Corriente	15 A
Máx. Consumo de energía.	1800 W (carga resistiva)
Detección de cantidades eléctricas	No admitido
Temperatura ambiente	-30 a 40 °C (-22 a 104 °F)
Temperatura de almacenamiento	-20 ° a 60 °C (-4 ° a 140 °F)
Humedad de funcionamiento	10 % a 90 % HR, sin condensación
Wi-Fi	Red de 2.4 GHz, 802.11 b/g/n
Protocolo inalámbrico	Wi-Fi + Bluetooth (Bluetooth sólo realiza el emparejamiento)
Clase de protección	IP20
Autenticación	cETLus/FCC ID IC

Marcas



El logotipo Wi-Fi CERTIFIED™ es una marca registrada de Wi-Fi Alliance®.



La marca denominativa Bluetooth® y sus logotipos son marcas registradas propiedad de Bluetooth SIG, Inc. y cualquier uso de dichas marcas por parte de Amazon.com Services LLC se realiza bajo licencia. Las demás marcas y nombres comerciales pertenecen a sus respectivos propietarios.

Comentarios y ayuda

Nos encantaría conocer tu opinión. Anímate a valorar y comentar tus órdenes de compra.

Si necesitas ayuda con tu producto, inicia sesión en tu cuenta y ve a “Servicio de atención al cliente” / “Contacto”.

amazon.com/pbhelp

FCC ID: 2AB2Q-LA66701

IC: 10256A-LA66701



Amazon.com Services LLC, 410 Terry Ave N. Seattle, WA 98109 USA • Amazon.com.ca ULC, 40 King Street West 47th Floor, Toronto, ON, M2H 3Y2, Canada • Importadora Amazon México, S. de R.L. de C.V., Boulevard Manuel Ávila Camacho, #261 Piso 5 Colonia Polanco I Sección, Miguel Hidalgo, Ciudad de México, C.P.11510 México RFC: ACA140623TXA (☎: 800-874-8725)

Amazon Commercial Services Pty Ltd, L 37 2-26 Park ST, Sydney NSW 2000 Australia • Amazon Commercial Services (South Africa), Wembley Square 2 - 134 Solan Street, Gardens, Cape Town, Western Cape, 8001



Open Source Notice

** mbedTLS; version 2.28.1 -- https://linkprotect.cudasvc.com/url?a=https%3a%2f%2ftls.mbed.org%2f&c=E,1,PnMr13Qxkewomy_zN-4liPqKlPPlaKue_iOMlr1gObSgrSb6SzUaZwOoRuEWQqL-vWzhBFJvyTcKli5BPGvt0N1AEzk5lzun9vW08U7NV0xOw,,&typo=1

** ESP-IDF; version 4.3.2 -- <https://github.com/espressif/esp-idf>

** FlashDB; version 2.1.0 -- <https://github.com/armink/FlashDB>

** Fal; version 1.0.0 -- <https://github.com/RT-Thread-packages/fal>

Apache License

Version 2.0, January 2004

<http://www.apache.org/licenses/>

TERMS AND CONDITIONS FOR USE, REPRODUCTION, AND DISTRIBUTION

1. Definitions.

“License” shall mean the terms and conditions for use, reproduction, and distribution as defined by Sections 1 through 9 of this document.

“Licensor” shall mean the copyright owner or entity authorized by the copyright owner that is granting the License.

“Legal Entity” shall mean the union of the acting entity and all other entities that control, are controlled by, or are under common control with that entity. For the purposes of this definition, “control” means (i) the power, direct or indirect, to cause the direction or management of such entity, whether by contract or otherwise, or (ii) ownership of fifty percent (50%) or more of the outstanding shares, or (iii) beneficial ownership of such entity.

“You” (or “Your”) shall mean an individual or Legal Entity exercising permissions granted by this License.

“Source” form shall mean the preferred form for making modifications, including but not limited to software source code, documentation source, and configuration files.

“Object” form shall mean any form resulting from mechanical transformation or translation of a Source form, including but not limited to compiled object code, generated documentation, and conversions to other media types.

“Work” shall mean the work of authorship, whether in Source or Object form, made available under the License, as indicated by a copyright notice that is included in or attached to the work (an example is provided in the Appendix below).

“Derivative Works” shall mean any work, whether in Source or Object form, that is based on (or derived from) the Work and for which the editorial revisions, annotations, elaborations, or other modifications represent, as a whole, an original work of authorship. For the purposes of this License, Derivative Works shall not include works that remain separable from, or merely link (or bind by name) to the interfaces of, the Work and Derivative Works thereof.

“Contribution” shall mean any work of authorship, including the original version of the Work and any modifications or additions to that Work or Derivative Works thereof, that is intentionally submitted to Licensor for inclusion in the Work by the copyright owner or by an individual or Legal Entity authorized to submit on behalf of the copyright owner. For the purposes of this definition, “submitted” means any form of electronic, verbal, or written communication sent to the Licensor or its representatives, including but not limited to communication on electronic mailing lists, source code control systems, and issue tracking systems that are managed by, or on behalf of, the Licensor for the purpose of discussing and improving the Work, but excluding communication that is conspicuously marked or otherwise designated in writing by the copyright owner as “Not a Contribution.”

“Contributor” shall mean Licensor and any individual or Legal Entity on behalf of whom a Contribution has been received by Licensor and subsequently incorporated within the Work.

2. Grant of Copyright License. Subject to the terms and conditions of this

License, each Contributor hereby grants to You a perpetual, worldwide, non-exclusive, no-charge, royalty-free, irrevocable copyright license to reproduce, prepare Derivative Works of, publicly display, publicly perform, sublicense, and distribute the Work and such Derivative Works in Source or Object form.

3. Grant of Patent License. Subject to the terms and conditions of this License, each Contributor hereby grants to You a perpetual, worldwide, non-exclusive, no-charge, royalty-free, irrevocable (except as stated in this section) patent license to make, have made, use, offer to sell, sell, import, and otherwise transfer the Work, where such license applies only to those patent claims licensable by such Contributor that are necessarily infringed by their Contribution(s) alone or by combination of their Contribution(s) with the Work to which such Contribution(s) was submitted. If You institute patent litigation against any entity (including a cross-claim or counterclaim in a lawsuit) alleging that the Work or a Contribution incorporated within the Work constitutes direct or contributory patent infringement, then any patent licenses granted to You under this License for that Work shall terminate as of the date such litigation is filed.

4. Redistribution. You may reproduce and distribute copies of the Work or Derivative Works thereof in any medium, with or without modifications, and in Source or Object form, provided that You meet the following conditions:

(a) You must give any other recipients of the Work or Derivative Works a copy of this License; and

(b) You must cause any modified files to carry prominent notices stating that You changed the files; and

(c) You must retain, in the Source form of any Derivative Works that You distribute, all copyright, patent, trademark, and attribution notices from the Source form of the Work, excluding those notices that do not pertain to any part of the Derivative Works; and

(d) If the Work includes a "NOTICE" text file as part of its distribution, then any Derivative Works that You distribute must include a readable copy of the attribution notices contained within such NOTICE file, excluding those notices that do not pertain to any part of the Derivative Works, in at least one of the following places: within a NOTICE text file distributed as part of the Derivative Works; within the Source form or documentation, if provided along with the Derivative Works; or, within a display generated by the Derivative Works, if and wherever such third-party notices normally appear. The contents of the NOTICE file are for informational purposes only and do not modify the License. You may add Your own attribution notices within Derivative Works that You distribute, alongside or as an addendum to the NOTICE text from the Work, provided that such additional attribution notices cannot be construed as modifying the License.

You may add Your own copyright statement to Your modifications and may provide additional or different license terms and conditions for use, reproduction, or distribution of Your modifications, or for any such Derivative Works as a whole, provided Your use, reproduction, and distribution of the Work otherwise complies with the conditions stated in this License.

5. Submission of Contributions. Unless You explicitly state otherwise, any Contribution intentionally submitted for inclusion in the Work by You to the Licensor shall be under the terms and conditions of this License, without any additional terms or conditions. Notwithstanding the above, nothing herein shall supersede or modify the terms of any separate license agreement you may have executed with Licensor regarding such Contributions.

6. Trademarks. This License does not grant permission to use the trade names, trademarks, service marks, or product names of the Licensor, except as required for reasonable and customary use in describing the origin of the Work and reproducing the content of the NOTICE file.

7. Disclaimer of Warranty. Unless required by applicable law or agreed to in writing, Licensor provides the Work (and each Contributor provides its Contributions) on an "AS IS" BASIS, WITHOUT WARRANTIES OR CONDITIONS OF ANY

KIND, either express or implied, including, without limitation, any warranties or conditions of TITLE, NON-INFRINGEMENT, MERCHANTABILITY, or FITNESS FOR A PARTICULAR PURPOSE. You are solely responsible for determining the appropriateness of using or redistributing the Work and assume any risks associated with Your exercise of permissions under this License.

8. Limitation of Liability. In no event and under no legal theory, whether in tort (including negligence), contract, or otherwise, unless required by applicable law (such as deliberate and grossly negligent acts) or agreed to in writing, shall any Contributor be liable to You for damages, including any direct, indirect, special, incidental, or consequential damages of any character arising as a result of this License or out of the use or inability to use the Work (including but not limited to damages for loss of goodwill, work stoppage, computer failure or malfunction, or any and all other commercial damages or losses), even if such Contributor has been advised of the possibility of such damages.

9. Accepting Warranty or Additional Liability. While redistributing the Work or Derivative Works thereof, You may choose to offer, and charge a fee for, acceptance of support, warranty, indemnity, or other liability obligations and/or rights consistent with this License. However, in accepting such obligations, You may act only on Your own behalf and on Your sole responsibility, not on behalf of any other Contributor, and only if You agree to indemnify, defend, and hold each Contributor harmless for any liability incurred by, or claims asserted against, such Contributor by reason of your accepting any such warranty or additional liability.

END OF TERMS AND CONDITIONS

APPENDIX: How to apply the Apache License to your work.

To apply the Apache License to your work, attach the following boilerplate notice, with the fields enclosed by brackets “[]” replaced with your own identifying information. (Don't include the brackets!) The text should be enclosed in the appropriate comment syntax for the file format. We also recommend that a file or class name and description of purpose be included on the same “printed page” as the copyright notice for easier identification within third-party archives.

Copyright [yyyy] [name of copyright owner]

Licensed under the Apache License, Version 2.0 (the “License”);
you may not use this file except in compliance with the License.
You may obtain a copy of the License at

<http://www.apache.org/licenses/LICENSE-2.0>

Unless required by applicable law or agreed to in writing, software distributed under the License is distributed on an “AS IS” BASIS, WITHOUT WARRANTIES OR CONDITIONS OF ANY KIND, either express or implied. See the License for the specific language governing permissions and limitations under the License.

* For mbedTLS see also this required NOTICE:
Copyright (C) 2006-2015, ARM Limited, All Rights Reserved

* For ESP-IDF see also this required NOTICE:
Copyrights and Licenses

Software Copyrights

All original source code in this repository is Copyright (C) 2015-2023 Espressif Systems. This source code is licensed under the Apache License 2.0 as described in the file LICENSE.

Additional third party copyrighted code is included under the following licenses.



Where source code headers specify Copyright & License information, this information takes precedence over the summaries made here.

Some examples use external components which are not Apache licensed, please check the copyright description in each example source code.

Firmware Components

These third party libraries can be included into the application (firmware) produced by ESP-IDF.

Newlib is licensed under the BSD License and is Copyright of various parties, as described in COPYING.NEWLIB.

Xtensa header files are Copyright (C) 2013 Tensilica Inc and are licensed under the MIT License as reproduced in the individual header files.

Original parts of FreeRTOS (components/freertos) are Copyright (C) 2017 https://linkprotect.cudasvc.com/url?a=https%3a%2f%2famazon.com&c=E,1,rcR04vML7ksKILbbC-iU83y1MzPihZayIlyhGs8mokDIZX_SICE8LkDdyxhnrOP-sF8UZIs9dEOzYntMnt6t4Daa0m8VjDNCMql-m89LW-1cNDCX1Fo7sXji&typo=1, Inc. or its affiliates are licensed under the MIT License, as described in license.txt.

Original parts of LWIP (components/lwip) are Copyright (C) 2001, 2002 Swedish Institute of Computer Science and are licensed under the BSD License as described in COPYING file.

wpa_supplicant Copyright (c) 2003-2022 Jouni Malinen <j@w1.fi> and contributors and licensed under the BSD license.

Fast PBKDF2 Copyright (c) 2015 Joseph Birr-Pixton and licensed under CC0 Public Domain Dedication license.

FreeBSD net80211 Copyright (c) 2004-2008 Sam Leffler, Errno Consulting and licensed under the BSD license.

argtable3 argument parsing library Copyright (C) 1998-2001, 2003-2011, 2013 Stewart Heitmann and licensed under 3-clause BSD license. argtable3 also includes the following software components. For details, please see argtable3 LICENSE file.

C Hash Table library, Copyright (c) 2002, Christopher Clark and licensed under 3-clause BSD license.

The Better String library, Copyright (c) 2014, Paul Hsieh and licensed under 3-clause BSD license.

TCL library, Copyright the Regents of the University of California, Sun Microsystems, Inc., Scriptics Corporation, ActiveState Corporation and other parties, and licensed under TCL/TK License.

linenoise line editing library Copyright (c) 2010-2014 Salvatore Sanfilippo, Copyright (c) 2010-2013 Pieter Noordhuis, licensed under 2-clause BSD license.

FatFS library, Copyright (C) 2017 ChaN, is licensed under a BSD-style license.

cJSON library, Copyright (c) 2009-2017 Dave Gamble and cJSON contributors, is licensed under MIT license as described in LICENSE file.

micro-ecc library, Copyright (c) 2014 Kenneth MacKay, is licensed under 2-clause BSD license.

Mbed TLS library, Copyright (C) 2006-2018 ARM Limited, is licensed under Apache License 2.0 as described in LICENSE file.

SPIFFS library, Copyright (c) 2013-2017 Peter Andersson, is licensed under MIT license as described in LICENSE file.

SD/MMC driver is derived from OpenBSD SD/MMC driver, Copyright (c) 2006 Uwe Stuehler, and is licensed under BSD license.

ESP-MQTT MQTT Package (contiki-mqtt) - Copyright (c) 2014, Stephen Robinson, MQTT-ESP - Tuan PM <tuanpm at live dot com> is licensed under Apache License 2.0 as described in LICENSE file .

BLE Mesh is adapted from Zephyr Project, Copyright (c) 2017-2018 Intel Corporation and licensed under Apache License 2.0.

mynewt-nimble Apache Mynewt NimBLE, Copyright 2015-2018, The Apache Software Foundation, is licensed under Apache License 2.0 as described in LICENSE file .

TLSF allocator Two Level Segregated Fit memory allocator, Copyright (c) 2006-2016, Matthew Conte, and licensed under the BSD 3-clause license.

openthread, Copyright (c) The OpenThread Authors, is licensed under BSD License as described in LICENSE file .

UBSAN runtime – Copyright (c) 2016, Linaro Limited and Jiří Závěručky, licensed under the BSD 2-clause license.

HTTP Parser Based on src/http/nginx_http_parse.c from NGINX copyright Igor Sysoev. Additional changes are licensed under the same terms as NGINX and Joyent, Inc. and other Node contributors. For details please check LICENSE file.

SEGGER SystemView target-side library, Copyright (c) 1995-2021 SEGGER Microcontroller GmbH, is licensed under BSD 1-clause license.

Documentation

HTML version of the ESP-IDF Programming Guide uses the Sphinx theme sphinx_idf_theme, which is Copyright (c) 2013-2020 Dave Snider, Read the Docs, Inc. & contributors, and Espressif Systems (Shanghai) CO., LTD. It is based on sphinx_rtd_theme. Both are licensed under MIT license.

ROM Source Code Copyrights

Espressif SoCs mask ROM hardware includes binaries compiled from portions of the following third party software:

Newlib , licensed under the BSD License and is Copyright of various parties, as described in COPYING.NEWLIB .

Xtensa libhal, Copyright (c) Tensilica Inc and licensed under the MIT license (see below).

TinyBasic Plus, Copyright Mike Field & Scott Lawrence and licensed under the MIT license (see below).

miniz, by Rich Geldreich - placed into the public domain.

wpa_supplicant Copyright (c) 2003-2022 Jouni Malinen <j@w1.fi> and contributors and licensed under the BSD license.

TJpgDec Copyright (C) 2011, ChaN, all right reserved. See below for license.

Parts of Zephyr RTOS USB stack:
DesignWare USB device driver Copyright (c) 2016 Intel Corporation and licensed under Apache 2.0 license.

Generic USB device driver Copyright (c) 2006 Bertrik Sikken (bertrik@sikken.nl), 2016 Intel Corporation and licensed under BSD 3-clause license.

USB descriptors functionality Copyright (c) 2017 PHYTEC Messtechnik GmbH, 2017-2018 Intel Corporation and licensed under Apache 2.0 license.

USB DFU class driver Copyright (c) 2015-2016 Intel Corporation, 2017 PHYTEC Messtechnik GmbH and licensed under BSD 3-clause license.

USB CDC ACM class driver Copyright (c) 2015-2016 Intel Corporation and licensed under Apache 2.0 license.

Xtensa libhal MIT License
Copyright (c) 2003, 2006, 2010 Tensilica Inc.

Permission is hereby granted, free of charge, to any person obtaining a copy of this software and associated documentation files (the "Software"), to deal in the Software without restriction, including without limitation the rights to use, copy, modify, merge, publish, distribute, sublicense, and/or sell copies of the Software, and to permit persons to whom the Software is furnished to do so, subject to the following conditions:

The above copyright notice and this permission notice shall be included in all copies or substantial portions of the Software.

THE SOFTWARE IS PROVIDED "AS IS", WITHOUT WARRANTY OF ANY KIND, EXPRESS OR IMPLIED, INCLUDING BUT NOT LIMITED TO THE WARRANTIES OF MERCHANTABILITY, FITNESS FOR A PARTICULAR PURPOSE AND NONINFRINGEMENT. IN NO EVENT SHALL THE AUTHORS OR COPYRIGHT HOLDERS BE LIABLE FOR ANY CLAIM, DAMAGES OR OTHER LIABILITY, WHETHER IN AN ACTION OF CONTRACT, TORT OR OTHERWISE, ARISING FROM, OUT OF OR IN CONNECTION WITH THE SOFTWARE OR THE USE OR OTHER DEALINGS IN THE SOFTWARE.

TinyBasic Plus MIT License
Copyright (c) 2012-2013

Permission is hereby granted, free of charge, to any person obtaining a copy of this software and associated documentation files (the "Software"), to deal in the Software without restriction, including without limitation the rights to use, copy, modify, merge, publish, distribute, sublicense, and/or sell copies of the Software, and to permit persons to whom the Software is furnished to do so, subject to the following conditions:

The above copyright notice and this permission notice shall be included in all copies or substantial portions of the Software.

THE SOFTWARE IS PROVIDED "AS IS", WITHOUT WARRANTY OF ANY KIND, EXPRESS OR IMPLIED, INCLUDING BUT NOT LIMITED TO THE WARRANTIES OF MERCHANTABILITY, FITNESS FOR A PARTICULAR PURPOSE AND NONINFRINGEMENT. IN NO EVENT SHALL THE AUTHORS OR COPYRIGHT HOLDERS BE LIABLE FOR ANY CLAIM, DAMAGES OR OTHER LIABILITY, WHETHER IN AN ACTION OF CONTRACT, TORT OR OTHERWISE, ARISING FROM, OUT OF OR IN CONNECTION WITH THE SOFTWARE OR THE USE OR OTHER DEALINGS IN THE SOFTWARE.

TJpgDec License
TJpgDec - Tiny JPEG Decompressor R0.01 (C) ChaN, 2011 The TJpgDec is a generic JPEG decompressor module for tiny embedded systems. This is a free software that opened for education, research and commercial developments under license policy of following terms.

Copyright (C) 2011, ChaN, all right reserved.

The TJpgDec module is a free software and there is NO WARRANTY.

No restriction on use. You can use, modify and redistribute it for personal, non-profit or commercial products UNDER YOUR RESPONSIBILITY.

Redistributions of source code must retain the above copyright notice.

* For FlashDB see also this required NOTICE:
Copyright (c) 2021, Armink, <armink.ztl@gmail.com>



Copyright (c) 2020, Armink, <armink.ztl@gmail.com>
Copyright (c) 2016-2018, Armink, <armink.ztl@gmail.com>
Copyright (c) 2020 STMicroelectronics.
Copyright (c) 2018 STMicroelectronics.
Copyright (c) 2017 STMicroelectronics.
Copyright (c) 2016 STMicroelectronics.
Copyright (c) 2009-2018 Arm Limited. All rights reserved.
Copyright (c) 2017-2018 Arm Limited. All rights reserved.
Copyright (c) 2022, kaans, <https://github.com/kaans>
Copyright (c) 2006-2018, RT-Thread Development Team
Copyright (c) 2006-2020, RT-Thread Development Team
Copyright (c) 2022, Spider, <spider@spider.vc>
* For Fal see also this required NOTICE:
Copyright (c) 2006-2018, RT-Thread Development Team

** uthash; version 2.1.0 -- https://linkprotect.cudasvc.com/url?a=https%3a%2f%2ftroydhanson.github.io%2futhash%2f&c=E,1,XS_C7bGvNJYwOLI9Z-aN4KjDOGwwVKMxcZPYq3ToZHdiw6EU_x-w4NjGxfCKfcTfLGJ-T7BR26le9lqeSM_hfFUzluoQY2IOD44benhBkyXfc394HFJsrTyMPp0,&typo=1
Copyright (c) 2005-2014, Troy D. Hanson <http://troydhanson.github.com/uthash/>
All rights reserved.

Redistribution and use in source and binary forms, with or without modification, are permitted provided that the following conditions are met:

* Redistributions of source code must retain the above copyright notice, this list of conditions and the following disclaimer.

THIS SOFTWARE IS PROVIDED BY THE COPYRIGHT HOLDERS AND CONTRIBUTORS "AS IS" AND ANY EXPRESS OR IMPLIED WARRANTIES, INCLUDING, BUT NOT LIMITED TO, THE IMPLIED WARRANTIES OF MERCHANTABILITY AND FITNESS FOR A PARTICULAR PURPOSE ARE DISCLAIMED. IN NO EVENT SHALL THE COPYRIGHT OWNER OR CONTRIBUTORS BE LIABLE FOR ANY DIRECT, INDIRECT, INCIDENTAL, SPECIAL, EXEMPLARY, OR CONSEQUENTIAL DAMAGES (INCLUDING, BUT NOT LIMITED TO, PROCUREMENT OF SUBSTITUTE GOODS OR SERVICES; LOSS OF USE, DATA, OR PROFITS; OR BUSINESS INTERRUPTION) HOWEVER CAUSED AND ON ANY THEORY OF LIABILITY, WHETHER IN CONTRACT, STRICT LIABILITY, OR TORT (INCLUDING NEGLIGENCE OR OTHERWISE) ARISING IN ANY WAY OUT OF THE USE OF THIS SOFTWARE, EVEN IF ADVISED OF THE POSSIBILITY OF SUCH DAMAGE.

** |wIP; version v2.0.3 -- https://linkprotect.cudasvc.com/url?a=http%3a%2f%2fsavannah.nongnu.org%2fprojects%2fiwip%2f&c=E,1,4xq4_NCo-36suoOGxwKjND0Q8mqRr1RK3r7MubtRC1d8Z5gNsFbLqPIAhaXT_ASKJ8IR9wL85fklX13A7sDZz9OyRtEJH8Hc8zc_7dt_B5AKJn8dGp7g_19Fg,,&typo=1
Copyright (c) 2001, 2002 Swedish Institute of Computer Science.

Redistribution and use in source and binary forms, with or without modification, are permitted provided that the following conditions are met:

1. Redistributions of source code must retain the above copyright notice, this list of conditions and the following disclaimer.
2. Redistributions in binary form must reproduce the above copyright notice, this list of conditions and the following disclaimer in the documentation and/or other materials provided with the distribution.
3. The name of the author may not be used to endorse or promote products derived from this software without specific prior written permission.

THIS SOFTWARE IS PROVIDED BY THE AUTHOR "AS IS AND ANY EXPRESS OR IMPLIED WARRANTIES, INCLUDING, BUT NOT LIMITED TO, THE IMPLIED WARRANTIES OF MERCHANTABILITY AND FITNESS FOR A PARTICULAR PURPOSE ARE DISCLAIMED. IN NO EVENT SHALL THE AUTHOR BE LIABLE FOR ANY DIRECT, INDIRECT, INCIDENTAL, SPECIAL, EXEMPLARY, OR CONSEQUENTIAL DAMAGES (INCLUDING, BUT NOT LIMITED TO, PROCUREMENT OF SUBSTITUTE GOODS OR SERVICES; LOSS OF USE, DATA, OR PROFITS; OR BUSINESS INTERRUPTION) HOWEVER CAUSED AND ON ANY THEORY OF LIABILITY, WHETHER IN CONTRACT, STRICT LIABILITY, OR TORT (INCLUDING NEGLIGENCE OR OTHERWISE) ARISING IN ANY WAY OUT OF THE USE OF THIS SOFTWARE, EVEN IF ADVISED OF THE POSSIBILITY OF SUCH DAMAGE.



** newlib; version 2.2.0 -- <https://github.com/espressif/esp-idf/blob/v4.3.2/components/newlib/COPYING.NEWLIB>
The newlib subdirectory is a collection of software from several sources.

Each file may have its own copyright/license that is embedded in the source file. Unless otherwise noted in the body of the source file(s), the following copyright notices will apply to the contents of the newlib subdirectory:

(1) Red Hat Incorporated

Copyright (c) 1994-2009 Red Hat, Inc. All rights reserved.

This copyrighted material is made available to anyone wishing to use, modify, copy, or redistribute it subject to the terms and conditions of the BSD License. This program is distributed in the hope that it will be useful, but WITHOUT ANY WARRANTY expressed or implied, including the implied warranties of MERCHANTABILITY or FITNESS FOR A PARTICULAR PURPOSE. A copy of this license is available at <http://www.opensource.org/licenses>. Any Red Hat trademarks that are incorporated in the source code or documentation are not subject to the BSD License and may only be used or replicated with the express permission of Red Hat, Inc.

(2) University of California, Berkeley

Copyright (c) 1981-2000 The Regents of the University of California.
All rights reserved.

Redistribution and use in source and binary forms, with or without modification, are permitted provided that the following conditions are met:

- * Redistributions of source code must retain the above copyright notice, this list of conditions and the following disclaimer.
- * Redistributions in binary form must reproduce the above copyright notice, this list of conditions and the following disclaimer in the documentation and/or other materials provided with the distribution.
- * Neither the name of the University nor the names of its contributors may be used to endorse or promote products derived from this software without specific prior written permission.

THIS SOFTWARE IS PROVIDED BY THE COPYRIGHT HOLDERS AND CONTRIBUTORS "AS IS" AND ANY EXPRESS OR IMPLIED WARRANTIES, INCLUDING, BUT NOT LIMITED TO, THE IMPLIED WARRANTIES OF MERCHANTABILITY AND FITNESS FOR A PARTICULAR PURPOSE ARE DISCLAIMED. IN NO EVENT SHALL THE COPYRIGHT OWNER OR CONTRIBUTORS BE LIABLE FOR ANY DIRECT, INDIRECT, INCIDENTAL, SPECIAL, EXEMPLARY, OR CONSEQUENTIAL DAMAGES (INCLUDING, BUT NOT LIMITED TO, PROCUREMENT OF SUBSTITUTE GOODS OR SERVICES; LOSS OF USE, DATA, OR PROFITS; OR BUSINESS INTERRUPTION) HOWEVER CAUSED AND ON ANY THEORY OF LIABILITY, WHETHER IN CONTRACT, STRICT LIABILITY, OR TORT (INCLUDING NEGLIGENCE OR OTHERWISE) ARISING IN ANY WAY OUT OF THE USE OF THIS SOFTWARE, EVEN IF ADVISED OF THE POSSIBILITY OF SUCH DAMAGE.

(3) David M. Gay (AT&T 1991, Lucent 1998)

The author of this software is David M. Gay.

Copyright (c) 1991 by AT&T.

Permission to use, copy, modify, and distribute this software for any purpose without fee is hereby granted, provided that this entire notice is included in all copies of any software which is or includes a copy or modification of this software and in all copies of the supporting

documentation for such software.

THIS SOFTWARE IS BEING PROVIDED "AS IS", WITHOUT ANY EXPRESS OR IMPLIED WARRANTY. IN PARTICULAR, NEITHER THE AUTHOR NOR AT&T MAKES ANY REPRESENTATION OR WARRANTY OF ANY KIND CONCERNING THE MERCHANTABILITY OF THIS SOFTWARE OR ITS FITNESS FOR ANY PARTICULAR PURPOSE.

The author of this software is David M. Gay.

Copyright (C) 1998-2001 by Lucent Technologies
All Rights Reserved

Permission to use, copy, modify, and distribute this software and its documentation for any purpose and without fee is hereby granted, provided that the above copyright notice appear in all copies and that both that the copyright notice and this permission notice and warranty disclaimer appear in supporting documentation, and that the name of Lucent or any of its entities not be used in advertising or publicity pertaining to distribution of the software without specific, written prior permission.

LUCENT DISCLAIMS ALL WARRANTIES WITH REGARD TO THIS SOFTWARE, INCLUDING ALL IMPLIED WARRANTIES OF MERCHANTABILITY AND FITNESS. IN NO EVENT SHALL LUCENT OR ANY OF ITS ENTITIES BE LIABLE FOR ANY SPECIAL, INDIRECT OR CONSEQUENTIAL DAMAGES OR ANY DAMAGES WHATSOEVER RESULTING FROM LOSS OF USE, DATA OR PROFITS, WHETHER IN AN ACTION OF CONTRACT, NEGLIGENCE OR OTHER TORTIOUS ACTION, ARISING OUT OF OR IN CONNECTION WITH THE USE OR PERFORMANCE OF THIS SOFTWARE.

(4) Advanced Micro Devices

Copyright 1989, 1990 Advanced Micro Devices, Inc.

This software is the property of Advanced Micro Devices, Inc (AMD) which specifically grants the user the right to modify, use and distribute this software provided this notice is not removed or altered. All other rights are reserved by AMD.

AMD MAKES NO WARRANTY OF ANY KIND, EXPRESS OR IMPLIED, WITH REGARD TO THIS SOFTWARE. IN NO EVENT SHALL AMD BE LIABLE FOR INCIDENTAL OR CONSEQUENTIAL DAMAGES IN CONNECTION WITH OR ARISING FROM THE FURNISHING, PERFORMANCE, OR USE OF THIS SOFTWARE.

So that all may benefit from your experience, please report any problems or suggestions about this software to the 29K Technical Support Center at 800-29-29-AMD (800-292-9263) in the USA, or 0800-89-1131 in the UK, or 0031-11-1129 in Japan, toll free. The direct dial number is 512-462-4118.

Advanced Micro Devices, Inc.
29K Support Products
Mail Stop 573
5900 E. Ben White Blvd.
Austin, TX 78741
800-292-9263

(5)

(6)

(7) Sun Microsystems

Copyright (C) 1993 by Sun Microsystems, Inc. All rights reserved.

Developed at SunPro, a Sun Microsystems, Inc. business.

Permission to use, copy, modify, and distribute this software is freely granted, provided that this notice is preserved.

(8) Hewlett Packard

(c) Copyright 1986 HEWLETT-PACKARD COMPANY

To anyone who acknowledges that this file is provided "AS IS" without any express or implied warranty:

permission to use, copy, modify, and distribute this file for any purpose is hereby granted without fee, provided that the above copyright notice and this notice appears in all copies, and that the name of Hewlett-Packard Company not be used in advertising or publicity pertaining to distribution of the software without specific, written prior permission. Hewlett-Packard Company makes no representations about the suitability of this software for any purpose.

(9) Hans-Peter Nilsson

Copyright (C) 2001 Hans-Peter Nilsson

Permission to use, copy, modify, and distribute this software is freely granted, provided that the above copyright notice, this notice and the following disclaimer are preserved with no changes.

THIS SOFTWARE IS PROVIDED "AS IS" AND WITHOUT ANY EXPRESS OR IMPLIED WARRANTIES, INCLUDING, WITHOUT LIMITATION, THE IMPLIED WARRANTIES OF MERCHANTABILITY AND FITNESS FOR A PARTICULAR PURPOSE.

(10) Stephane Carrez (m68hc11-elf/m68hc12-elf targets only)

Copyright (C) 1999, 2000, 2001, 2002 Stephane Carrez (stcarrez@nerim.fr)

The authors hereby grant permission to use, copy, modify, distribute, and license this software and its documentation for any purpose, provided that existing copyright notices are retained in all copies and that this notice is included verbatim in any distributions. No written agreement, license, or royalty fee is required for any of the authorized uses. Modifications to this software may be copyrighted by their authors and need not follow the licensing terms described here, provided that the new terms are clearly indicated on the first page of each file where they apply.

(11) Christopher G. Demetriou

Copyright (c) 2001 Christopher G. Demetriou
All rights reserved.

Redistribution and use in source and binary forms, with or without modification, are permitted provided that the following conditions are met:

1. Redistributions of source code must retain the above copyright notice, this list of conditions and the following disclaimer.
2. Redistributions in binary form must reproduce the above copyright notice, this list of conditions and the following disclaimer in the documentation and/or other materials provided with the distribution.
3. The name of the author may not be used to endorse or promote products derived from this software without specific prior written permission.

THIS SOFTWARE IS PROVIDED BY THE AUTHOR "AS IS" AND ANY EXPRESS OR IMPLIED WARRANTIES, INCLUDING, BUT NOT LIMITED TO, THE IMPLIED WARRANTIES OF MERCHANTABILITY AND FITNESS FOR A PARTICULAR PURPOSE ARE DISCLAIMED. IN NO EVENT SHALL THE AUTHOR BE LIABLE FOR ANY DIRECT, INDIRECT, INCIDENTAL, SPECIAL, EXEMPLARY, OR CONSEQUENTIAL DAMAGES (INCLUDING, BUT NOT LIMITED TO, PROCUREMENT OF SUBSTITUTE GOODS OR SERVICES; LOSS OF USE, DATA, OR PROFITS; OR BUSINESS INTERRUPTION) HOWEVER CAUSED AND ON ANY THEORY OF LIABILITY, WHETHER IN CONTRACT, STRICT LIABILITY, OR TORT

(INCLUDING NEGLIGENCE OR OTHERWISE) ARISING IN ANY WAY OUT OF THE USE OF THIS SOFTWARE, EVEN IF ADVISED OF THE POSSIBILITY OF SUCH DAMAGE.

(12) SuperH, Inc.

Copyright 2002 SuperH, Inc. All rights reserved

This software is the property of SuperH, Inc (SuperH) which specifically grants the user the right to modify, use and distribute this software provided this notice is not removed or altered. All other rights are reserved by SuperH.

SUPERH MAKES NO WARRANTY OF ANY KIND, EXPRESS OR IMPLIED, WITH REGARD TO THIS SOFTWARE. IN NO EVENT SHALL SUPERH BE LIABLE FOR INDIRECT, SPECIAL, INCIDENTAL OR CONSEQUENTIAL DAMAGES IN CONNECTION WITH OR ARISING FROM THE FURNISHING, PERFORMANCE, OR USE OF THIS SOFTWARE.

So that all may benefit from your experience, please report any problems or suggestions about this software to the SuperH Support Center via e-mail at softwaresupport@superh.com.

SuperH, Inc.
405 River Oaks Parkway
San Jose
CA 95134
USA

(13) Royal Institute of Technology

Copyright (c) 1999 Kungliga Tekniska Högskolan
(Royal Institute of Technology, Stockholm, Sweden).
All rights reserved.

Redistribution and use in source and binary forms, with or without modification, are permitted provided that the following conditions are met:

1. Redistributions of source code must retain the above copyright notice, this list of conditions and the following disclaimer.
2. Redistributions in binary form must reproduce the above copyright notice, this list of conditions and the following disclaimer in the documentation and/or other materials provided with the distribution.
3. Neither the name of KTH nor the names of its contributors may be used to endorse or promote products derived from this software without specific prior written permission.

THIS SOFTWARE IS PROVIDED BY KTH AND ITS CONTRIBUTORS "AS IS" AND ANY EXPRESS OR IMPLIED WARRANTIES, INCLUDING, BUT NOT LIMITED TO, THE IMPLIED WARRANTIES OF MERCHANTABILITY AND FITNESS FOR A PARTICULAR PURPOSE ARE DISCLAIMED. IN NO EVENT SHALL KTH OR ITS CONTRIBUTORS BE LIABLE FOR ANY DIRECT, INDIRECT, INCIDENTAL, SPECIAL, EXEMPLARY, OR CONSEQUENTIAL DAMAGES (INCLUDING, BUT NOT LIMITED TO, PROCUREMENT OF SUBSTITUTE GOODS OR SERVICES; LOSS OF USE, DATA, OR PROFITS; OR BUSINESS INTERRUPTION) HOWEVER CAUSED AND ON ANY THEORY OF LIABILITY, WHETHER IN CONTRACT, STRICT LIABILITY, OR TORT (INCLUDING NEGLIGENCE OR OTHERWISE) ARISING IN ANY WAY OUT OF THE USE OF THIS SOFTWARE, EVEN IF ADVISED OF THE POSSIBILITY OF SUCH DAMAGE.

(14) Alexey Zelkin

Copyright (c) 2000, 2001 Alexey Zelkin <phantom@FreeBSD.org>
All rights reserved.

Redistribution and use in source and binary forms, with or without modification, are permitted provided that the following conditions are met:

1. Redistributions of source code must retain the above copyright

notice, this list of conditions and the following disclaimer.

2. Redistributions in binary form must reproduce the above copyright notice, this list of conditions and the following disclaimer in the documentation and/or other materials provided with the distribution.

THIS SOFTWARE IS PROVIDED BY THE AUTHOR AND CONTRIBUTORS "AS IS" AND ANY EXPRESS OR IMPLIED WARRANTIES, INCLUDING, BUT NOT LIMITED TO, THE IMPLIED WARRANTIES OF MERCHANTABILITY AND FITNESS FOR A PARTICULAR PURPOSE ARE DISCLAIMED. IN NO EVENT SHALL THE AUTHOR OR CONTRIBUTORS BE LIABLE FOR ANY DIRECT, INDIRECT, INCIDENTAL, SPECIAL, EXEMPLARY, OR CONSEQUENTIAL DAMAGES (INCLUDING, BUT NOT LIMITED TO, PROCUREMENT OF SUBSTITUTE GOODS OR SERVICES; LOSS OF USE, DATA, OR PROFITS; OR BUSINESS INTERRUPTION) HOWEVER CAUSED AND ON ANY THEORY OF LIABILITY, WHETHER IN CONTRACT, STRICT LIABILITY, OR TORT (INCLUDING NEGLIGENCE OR OTHERWISE) ARISING IN ANY WAY OUT OF THE USE OF THIS SOFTWARE, EVEN IF ADVISED OF THE POSSIBILITY OF SUCH DAMAGE.

(15) Andrey A. Chernov

Copyright (C) 1997 by Andrey A. Chernov, Moscow, Russia.
All rights reserved.

Redistribution and use in source and binary forms, with or without modification, are permitted provided that the following conditions are met:

1. Redistributions of source code must retain the above copyright notice, this list of conditions and the following disclaimer.
2. Redistributions in binary form must reproduce the above copyright notice, this list of conditions and the following disclaimer in the documentation and/or other materials provided with the distribution.

THIS SOFTWARE IS PROVIDED BY THE AUTHOR "AS IS" AND ANY EXPRESS OR IMPLIED WARRANTIES, INCLUDING, BUT NOT LIMITED TO, THE IMPLIED WARRANTIES OF MERCHANTABILITY AND FITNESS FOR A PARTICULAR PURPOSE ARE DISCLAIMED. IN NO EVENT SHALL THE REGENTS OR CONTRIBUTORS BE LIABLE FOR ANY DIRECT, INDIRECT, INCIDENTAL, SPECIAL, EXEMPLARY, OR CONSEQUENTIAL DAMAGES (INCLUDING, BUT NOT LIMITED TO, PROCUREMENT OF SUBSTITUTE GOODS OR SERVICES; LOSS OF USE, DATA, OR PROFITS; OR BUSINESS INTERRUPTION) HOWEVER CAUSED AND ON ANY THEORY OF LIABILITY, WHETHER IN CONTRACT, STRICT LIABILITY, OR TORT (INCLUDING NEGLIGENCE OR OTHERWISE) ARISING IN ANY WAY OUT OF THE USE OF THIS SOFTWARE, EVEN IF ADVISED OF THE POSSIBILITY OF SUCH DAMAGE.

(16) FreeBSD

Copyright (c) 1997-2002 FreeBSD Project.
All rights reserved.

Redistribution and use in source and binary forms, with or without modification, are permitted provided that the following conditions are met:

1. Redistributions of source code must retain the above copyright notice, this list of conditions and the following disclaimer.
2. Redistributions in binary form must reproduce the above copyright notice, this list of conditions and the following disclaimer in the documentation and/or other materials provided with the distribution.

THIS SOFTWARE IS PROVIDED BY THE AUTHOR AND CONTRIBUTORS "AS IS" AND ANY EXPRESS OR IMPLIED WARRANTIES, INCLUDING, BUT NOT LIMITED TO, THE IMPLIED WARRANTIES OF MERCHANTABILITY AND FITNESS FOR A PARTICULAR PURPOSE ARE DISCLAIMED. IN NO EVENT SHALL THE AUTHOR OR CONTRIBUTORS BE LIABLE FOR ANY DIRECT, INDIRECT, INCIDENTAL, SPECIAL, EXEMPLARY, OR CONSEQUENTIAL DAMAGES (INCLUDING, BUT NOT LIMITED TO, PROCUREMENT OF SUBSTITUTE GOODS OR SERVICES; LOSS OF USE, DATA, OR PROFITS; OR BUSINESS INTERRUPTION) HOWEVER CAUSED AND ON ANY THEORY OF LIABILITY, WHETHER IN CONTRACT, STRICT LIABILITY, OR TORT (INCLUDING NEGLIGENCE OR OTHERWISE) ARISING IN ANY WAY OUT OF THE USE OF THIS SOFTWARE, EVEN IF ADVISED OF THE POSSIBILITY OF SUCH DAMAGE.

(17) S. L. Moshier

Author: S. L. Moshier.

Copyright (c) 1984,2000 S.L. Moshier

Permission to use, copy, modify, and distribute this software for any purpose without fee is hereby granted, provided that this entire notice is included in all copies of any software which is or includes a copy or modification of this software and in all copies of the supporting documentation for such software.

THIS SOFTWARE IS BEING PROVIDED "AS IS", WITHOUT ANY EXPRESS OR IMPLIED WARRANTY. IN PARTICULAR, THE AUTHOR MAKES NO REPRESENTATION OR WARRANTY OF ANY KIND CONCERNING THE MERCHANTABILITY OF THIS SOFTWARE OR ITS FITNESS FOR ANY PARTICULAR PURPOSE.

(18) Citrus Project

Copyright (c)1999 Citrus Project,
All rights reserved.

Redistribution and use in source and binary forms, with or without modification, are permitted provided that the following conditions are met:

1. Redistributions of source code must retain the above copyright notice, this list of conditions and the following disclaimer.
2. Redistributions in binary form must reproduce the above copyright notice, this list of conditions and the following disclaimer in the documentation and/or other materials provided with the distribution.

THIS SOFTWARE IS PROVIDED BY THE AUTHOR AND CONTRIBUTORS "AS IS" AND ANY EXPRESS OR IMPLIED WARRANTIES, INCLUDING, BUT NOT LIMITED TO, THE IMPLIED WARRANTIES OF MERCHANTABILITY AND FITNESS FOR A PARTICULAR PURPOSE ARE DISCLAIMED. IN NO EVENT SHALL THE AUTHOR OR CONTRIBUTORS BE LIABLE FOR ANY DIRECT, INDIRECT, INCIDENTAL, SPECIAL, EXEMPLARY, OR CONSEQUENTIAL DAMAGES (INCLUDING, BUT NOT LIMITED TO, PROCUREMENT OF SUBSTITUTE GOODS OR SERVICES; LOSS OF USE, DATA, OR PROFITS; OR BUSINESS INTERRUPTION) HOWEVER CAUSED AND ON ANY THEORY OF LIABILITY, WHETHER IN CONTRACT, STRICT LIABILITY, OR TORT (INCLUDING NEGLIGENCE OR OTHERWISE) ARISING IN ANY WAY OUT OF THE USE OF THIS SOFTWARE, EVEN IF ADVISED OF THE POSSIBILITY OF SUCH DAMAGE.

(19) Todd C. Miller

Copyright (c) 1998 Todd C. Miller <Todd.Miller@courtesan.com>
All rights reserved.

Redistribution and use in source and binary forms, with or without modification, are permitted provided that the following conditions are met:

1. Redistributions of source code must retain the above copyright notice, this list of conditions and the following disclaimer.
2. Redistributions in binary form must reproduce the above copyright notice, this list of conditions and the following disclaimer in the documentation and/or other materials provided with the distribution.
3. The name of the author may not be used to endorse or promote products derived from this software without specific prior written permission.

THIS SOFTWARE IS PROVIDED "AS IS" AND ANY EXPRESS OR IMPLIED WARRANTIES, INCLUDING, BUT NOT LIMITED TO, THE IMPLIED WARRANTIES OF MERCHANTABILITY AND FITNESS FOR A PARTICULAR PURPOSE ARE DISCLAIMED. IN NO EVENT SHALL THE AUTHOR BE LIABLE FOR ANY DIRECT, INDIRECT, INCIDENTAL, SPECIAL, EXEMPLARY, OR CONSEQUENTIAL DAMAGES (INCLUDING, BUT NOT LIMITED TO, PROCUREMENT OF SUBSTITUTE GOODS OR SERVICES; LOSS OF USE, DATA, OR PROFITS; OR BUSINESS INTERRUPTION) HOWEVER CAUSED AND ON ANY THEORY OF LIABILITY, WHETHER IN CONTRACT, STRICT LIABILITY, OR TORT (INCLUDING NEGLIGENCE OR OTHERWISE) ARISING IN ANY WAY OUT OF THE USE OF THIS SOFTWARE, EVEN IF ADVISED OF THE POSSIBILITY OF SUCH DAMAGE.

(20) DJ Delorie (i386)
Copyright (C) 1991 DJ Delorie
All rights reserved.

Redistribution, modification, and use in source and binary forms is permitted provided that the above copyright notice and following paragraph are duplicated in all such forms.

This file is distributed WITHOUT ANY WARRANTY; without even the implied warranty of MERCHANTABILITY or FITNESS FOR A PARTICULAR PURPOSE.

(21) Free Software Foundation LGPL License (*-linux* targets only)

Copyright (C) 1990-1999, 2000, 2001 Free Software Foundation, Inc.
This file is part of the GNU C Library.
Contributed by Mark Kettenis <kettenis@phys.uva.nl>, 1997.

The GNU C Library is free software; you can redistribute it and/or modify it under the terms of the GNU Lesser General Public License as published by the Free Software Foundation; either version 2.1 of the License, or (at your option) any later version.

The GNU C Library is distributed in the hope that it will be useful, but WITHOUT ANY WARRANTY; without even the implied warranty of MERCHANTABILITY or FITNESS FOR A PARTICULAR PURPOSE. See the GNU Lesser General Public License for more details.

You should have received a copy of the GNU Lesser General Public License along with the GNU C Library; if not, write to the Free Software Foundation, Inc., 51 Franklin Street, Fifth Floor, Boston, MA 02110-1301 USA.

(22) Xavier Leroy LGPL License (i[3456]86-*-*linux* targets only)

Copyright (C) 1996 Xavier Leroy (Xavier.Leroy@inria.fr)

This program is free software; you can redistribute it and/or modify it under the terms of the GNU Library General Public License as published by the Free Software Foundation; either version 2 of the License, or (at your option) any later version.

This program is distributed in the hope that it will be useful, but WITHOUT ANY WARRANTY; without even the implied warranty of MERCHANTABILITY or FITNESS FOR A PARTICULAR PURPOSE. See the GNU Library General Public License for more details.

(23) Intel (i960)

Copyright (c) 1993 Intel Corporation

Intel hereby grants you permission to copy, modify, and distribute this software and its documentation. Intel grants this permission provided that the above copyright notice appears in all copies and that both the copyright notice and this permission notice appear in supporting documentation. In addition, Intel grants this permission provided that you prominently mark as "not part of the original" any modifications made to this software or documentation, and that the name of Intel Corporation not be used in advertising or publicity pertaining to distribution of the software or the documentation without specific, written prior permission.

Intel Corporation provides this AS IS, WITHOUT ANY WARRANTY, EXPRESS OR IMPLIED, INCLUDING, WITHOUT LIMITATION, ANY WARRANTY OF MERCHANTABILITY OR FITNESS FOR A PARTICULAR PURPOSE. Intel makes no guarantee or representations regarding the use of, or the results of the use of, the software and documentation in terms of correctness, accuracy, reliability, currentness, or otherwise; and you rely on the software, documentation and results solely at your own risk.

IN NO EVENT SHALL INTEL BE LIABLE FOR ANY LOSS OF USE, LOSS OF BUSINESS, LOSS OF PROFITS, INDIRECT, INCIDENTAL, SPECIAL OR CONSEQUENTIAL DAMAGES OF ANY KIND. IN NO EVENT SHALL INTEL'S TOTAL LIABILITY EXCEED THE SUM PAID TO INTEL FOR THE PRODUCT LICENSED HEREUNDER.

(24) Hewlett-Packard (hppa targets only)

(c) Copyright 1986 HEWLETT-PACKARD COMPANY

To anyone who acknowledges that this file is provided "AS IS"

without any express or implied warranty:

permission to use, copy, modify, and distribute this file for any purpose is hereby granted without fee, provided that the above copyright notice and this notice appears in all copies, and that the name of Hewlett-Packard Company not be used in advertising or publicity pertaining to distribution of the software without specific, written prior permission. Hewlett-Packard Company makes no representations about the suitability of this software for any purpose.

(25) Henry Spencer (only *-linux targets)

Copyright 1992, 1993, 1994 Henry Spencer. All rights reserved.

This software is not subject to any license of the American Telephone and Telegraph Company or of the Regents of the University of California.

Permission is granted to anyone to use this software for any purpose on any computer system, and to alter it and redistribute it, subject to the following restrictions:

1. The author is not responsible for the consequences of use of this software, no matter how awful, even if they arise from flaws in it.
2. The origin of this software must not be misrepresented, either by explicit claim or by omission. Since few users ever read sources, credits must appear in the documentation.
3. Altered versions must be plainly marked as such, and must not be misrepresented as being the original software. Since few users ever read sources, credits must appear in the documentation.
4. This notice may not be removed or altered.

(26) Mike Barcroft

Copyright (c) 2001 Mike Barcroft <mike@FreeBSD.org>

All rights reserved.

Redistribution and use in source and binary forms, with or without modification, are permitted provided that the following conditions are met:

1. Redistributions of source code must retain the above copyright notice, this list of conditions and the following disclaimer.
2. Redistributions in binary form must reproduce the above copyright notice, this list of conditions and the following disclaimer in the documentation and/or other materials provided with the distribution.

THIS SOFTWARE IS PROVIDED BY THE AUTHOR AND CONTRIBUTORS "AS IS" AND ANY EXPRESS OR IMPLIED WARRANTIES, INCLUDING, BUT NOT LIMITED TO, THE IMPLIED WARRANTIES OF MERCHANTABILITY AND FITNESS FOR A PARTICULAR PURPOSE ARE DISCLAIMED. IN NO EVENT SHALL THE AUTHOR OR CONTRIBUTORS BE LIABLE FOR ANY DIRECT, INDIRECT, INCIDENTAL, SPECIAL, EXEMPLARY, OR CONSEQUENTIAL DAMAGES (INCLUDING, BUT NOT LIMITED TO, PROCUREMENT OF SUBSTITUTE GOODS OR SERVICES; LOSS OF USE, DATA, OR PROFITS; OR BUSINESS INTERRUPTION) HOWEVER CAUSED AND ON ANY THEORY OF LIABILITY, WHETHER IN CONTRACT, STRICT LIABILITY, OR TORT (INCLUDING NEGLIGENCE OR OTHERWISE) ARISING IN ANY WAY OUT OF THE USE OF THIS SOFTWARE, EVEN IF ADVISED OF THE POSSIBILITY OF SUCH DAMAGE.

(27) Konstantin Chuguev (--enable-newlib-iconv)

Copyright (c) 1999, 2000

Konstantin Chuguev. All rights reserved.

Redistribution and use in source and binary forms, with or without modification, are permitted provided that the following conditions are met:

1. Redistributions of source code must retain the above copyright notice, this list of conditions and the following disclaimer.
2. Redistributions in binary form must reproduce the above copyright notice, this list of conditions and the following disclaimer in the documentation and/or other materials provided with the distribution.

THIS SOFTWARE IS PROVIDED BY THE AUTHOR AND CONTRIBUTORS "AS IS" AND ANY EXPRESS OR IMPLIED WARRANTIES, INCLUDING, BUT NOT LIMITED TO, THE IMPLIED WARRANTIES OF MERCHANTABILITY AND FITNESS FOR A PARTICULAR PURPOSE ARE DISCLAIMED. IN NO EVENT SHALL THE AUTHOR OR CONTRIBUTORS BE LIABLE FOR ANY DIRECT, INDIRECT, INCIDENTAL, SPECIAL, EXEMPLARY, OR CONSEQUENTIAL DAMAGES (INCLUDING, BUT NOT LIMITED TO, PROCUREMENT OF SUBSTITUTE GOODS OR SERVICES; LOSS OF USE, DATA, OR PROFITS; OR BUSINESS INTERRUPTION) HOWEVER CAUSED AND ON ANY THEORY OF LIABILITY, WHETHER IN CONTRACT, STRICT LIABILITY, OR TORT (INCLUDING NEGLIGENCE OR OTHERWISE) ARISING IN ANY WAY OUT OF THE USE OF THIS SOFTWARE, EVEN IF ADVISED OF THE POSSIBILITY OF SUCH DAMAGE.

iconv (Charset Conversion Library) v2.0

(28) Artem Bityuckiy (--enable-newlib-iconv)

Copyright (c) 2003, Artem B. Bityuckiy, SoftMine Corporation.

Rights transferred to Franklin Electronic Publishers.

Redistribution and use in source and binary forms, with or without modification, are permitted provided that the following conditions are met:

1. Redistributions of source code must retain the above copyright notice, this list of conditions and the following disclaimer.
2. Redistributions in binary form must reproduce the above copyright notice, this list of conditions and the following disclaimer in the documentation and/or other materials provided with the distribution.

THIS SOFTWARE IS PROVIDED BY THE AUTHOR AND CONTRIBUTORS "AS IS" AND ANY EXPRESS OR IMPLIED WARRANTIES, INCLUDING, BUT NOT LIMITED TO, THE IMPLIED WARRANTIES OF MERCHANTABILITY AND FITNESS FOR A PARTICULAR PURPOSE ARE DISCLAIMED. IN NO EVENT SHALL THE AUTHOR OR CONTRIBUTORS BE LIABLE FOR ANY DIRECT, INDIRECT, INCIDENTAL, SPECIAL, EXEMPLARY, OR CONSEQUENTIAL DAMAGES (INCLUDING, BUT NOT LIMITED TO, PROCUREMENT OF SUBSTITUTE GOODS OR SERVICES; LOSS OF USE, DATA, OR PROFITS; OR BUSINESS INTERRUPTION) HOWEVER CAUSED AND ON ANY THEORY OF LIABILITY, WHETHER IN CONTRACT, STRICT LIABILITY, OR TORT (INCLUDING NEGLIGENCE OR OTHERWISE) ARISING IN ANY WAY OUT OF THE USE OF THIS SOFTWARE, EVEN IF ADVISED OF THE POSSIBILITY OF SUCH DAMAGE.

(29) IBM, Sony, Toshiba (only spu-* targets)

(C) Copyright 2001,2006,
International Business Machines Corporation,
Sony Computer Entertainment, Incorporated,
Toshiba Corporation,

All rights reserved.

Redistribution and use in source and binary forms, with or without modification, are permitted provided that the following conditions are met:

* Redistributions of source code must retain the above copyright notice, this list of conditions and the following disclaimer.

- * Redistributions in binary form must reproduce the above copyright notice, this list of conditions and the following disclaimer in the documentation and/or other materials provided with the distribution.
- * Neither the names of the copyright holders nor the names of their contributors may be used to endorse or promote products derived from this software without specific prior written permission.

THIS SOFTWARE IS PROVIDED BY THE COPYRIGHT HOLDERS AND CONTRIBUTORS "AS IS" AND ANY EXPRESS OR IMPLIED WARRANTIES, INCLUDING, BUT NOT LIMITED TO, THE IMPLIED WARRANTIES OF MERCHANTABILITY AND FITNESS FOR A PARTICULAR PURPOSE ARE DISCLAIMED. IN NO EVENT SHALL THE COPYRIGHT OWNER OR CONTRIBUTORS BE LIABLE FOR ANY DIRECT, INDIRECT, INCIDENTAL, SPECIAL, EXEMPLARY, OR CONSEQUENTIAL DAMAGES (INCLUDING, BUT NOT LIMITED TO, PROCUREMENT OF SUBSTITUTE GOODS OR SERVICES; LOSS OF USE, DATA, OR PROFITS; OR BUSINESS INTERRUPTION) HOWEVER CAUSED AND ON ANY THEORY OF LIABILITY, WHETHER IN CONTRACT, STRICT LIABILITY, OR TORT (INCLUDING NEGLIGENCE OR OTHERWISE) ARISING IN ANY WAY OUT OF THE USE OF THIS SOFTWARE, EVEN IF ADVISED OF THE POSSIBILITY OF SUCH DAMAGE.

(30) - Alex Tatmanjants (targets using libc/posix)

Copyright (c) 1995 Alex Tatmanjants <alex@elvisti.kiev.ua>
at Electronni Visti IA, Kiev, Ukraine.
All rights reserved.

Redistribution and use in source and binary forms, with or without modification, are permitted provided that the following conditions are met:

1. Redistributions of source code must retain the above copyright notice, this list of conditions and the following disclaimer.
2. Redistributions in binary form must reproduce the above copyright notice, this list of conditions and the following disclaimer in the documentation and/or other materials provided with the distribution.

THIS SOFTWARE IS PROVIDED BY THE AUTHOR "AS IS" AND ANY EXPRESS OR IMPLIED WARRANTIES, INCLUDING, BUT NOT LIMITED TO, THE IMPLIED WARRANTIES OF MERCHANTABILITY AND FITNESS FOR A PARTICULAR PURPOSE ARE DISCLAIMED. IN NO EVENT SHALL THE AUTHOR BE LIABLE FOR ANY DIRECT, INDIRECT, INCIDENTAL, SPECIAL, EXEMPLARY, OR CONSEQUENTIAL DAMAGES (INCLUDING, BUT NOT LIMITED TO, PROCUREMENT OF SUBSTITUTE GOODS OR SERVICES; LOSS OF USE, DATA, OR PROFITS; OR BUSINESS INTERRUPTION) HOWEVER CAUSED AND ON ANY THEORY OF LIABILITY, WHETHER IN CONTRACT, STRICT LIABILITY, OR TORT (INCLUDING NEGLIGENCE OR OTHERWISE) ARISING IN ANY WAY OUT OF THE USE OF THIS SOFTWARE, EVEN IF ADVISED OF THE POSSIBILITY OF SUCH DAMAGE.

(31) - M. Warner Losh (targets using libc/posix)

Copyright (c) 1998, M. Warner Losh <imp@freebsd.org>
All rights reserved.

Redistribution and use in source and binary forms, with or without modification, are permitted provided that the following conditions are met:

1. Redistributions of source code must retain the above copyright notice, this list of conditions and the following disclaimer.
2. Redistributions in binary form must reproduce the above copyright notice, this list of conditions and the following disclaimer in the documentation and/or other materials provided with the distribution.

THIS SOFTWARE IS PROVIDED BY THE AUTHOR AND CONTRIBUTORS "AS IS" AND ANY EXPRESS OR IMPLIED WARRANTIES, INCLUDING, BUT NOT LIMITED TO, THE IMPLIED WARRANTIES OF MERCHANTABILITY AND FITNESS FOR A PARTICULAR PURPOSE ARE DISCLAIMED. IN NO EVENT SHALL THE AUTHOR OR CONTRIBUTORS BE LIABLE FOR ANY DIRECT, INDIRECT, INCIDENTAL, SPECIAL, EXEMPLARY, OR CONSEQUENTIAL DAMAGES (INCLUDING, BUT NOT LIMITED TO, PROCUREMENT OF SUBSTITUTE GOODS OR SERVICES; LOSS OF USE, DATA, OR PROFITS; OR BUSINESS INTERRUPTION) HOWEVER CAUSED AND ON ANY THEORY OF LIABILITY, WHETHER IN CONTRACT, STRICT LIABILITY, OR TORT (INCLUDING NEGLIGENCE OR OTHERWISE) ARISING IN ANY WAY

OUT OF THE USE OF THIS SOFTWARE, EVEN IF ADVISED OF THE POSSIBILITY OF SUCH DAMAGE.

(32) - Andrey A. Chernov (targets using libc/posix)

Copyright (C) 1996 by Andrey A. Chernov, Moscow, Russia.
All rights reserved.

Redistribution and use in source and binary forms, with or without modification, are permitted provided that the following conditions are met:

1. Redistributions of source code must retain the above copyright notice, this list of conditions and the following disclaimer.
2. Redistributions in binary form must reproduce the above copyright notice, this list of conditions and the following disclaimer in the documentation and/or other materials provided with the distribution.

THIS SOFTWARE IS PROVIDED BY THE AUTHOR "AS IS" AND ANY EXPRESS OR IMPLIED WARRANTIES, INCLUDING, BUT NOT LIMITED TO, THE IMPLIED WARRANTIES OF MERCHANTABILITY AND FITNESS FOR A PARTICULAR PURPOSE ARE DISCLAIMED. IN NO EVENT SHALL THE REGENTS OR CONTRIBUTORS BE LIABLE FOR ANY DIRECT, INDIRECT, INCIDENTAL, SPECIAL, EXEMPLARY, OR CONSEQUENTIAL DAMAGES (INCLUDING, BUT NOT LIMITED TO, PROCUREMENT OF SUBSTITUTE GOODS OR SERVICES; LOSS OF USE, DATA, OR PROFITS; OR BUSINESS INTERRUPTION) HOWEVER CAUSED AND ON ANY THEORY OF LIABILITY, WHETHER IN CONTRACT, STRICT LIABILITY, OR TORT (INCLUDING NEGLIGENCE OR OTHERWISE) ARISING IN ANY WAY OUT OF THE USE OF THIS SOFTWARE, EVEN IF ADVISED OF THE POSSIBILITY OF SUCH DAMAGE.

(33) - Daniel Eischen (targets using libc/posix)

Copyright (c) 2001 Daniel Eischen <deischen@FreeBSD.org>.
All rights reserved.

Redistribution and use in source and binary forms, with or without modification, are permitted provided that the following conditions are met:

1. Redistributions of source code must retain the above copyright notice, this list of conditions and the following disclaimer.
2. Redistributions in binary form must reproduce the above copyright notice, this list of conditions and the following disclaimer in the documentation and/or other materials provided with the distribution.

THIS SOFTWARE IS PROVIDED BY THE AUTHOR AND CONTRIBUTORS "AS IS" AND ANY EXPRESS OR IMPLIED WARRANTIES, INCLUDING, BUT NOT LIMITED TO, THE IMPLIED WARRANTIES OF MERCHANTABILITY AND FITNESS FOR A PARTICULAR PURPOSE ARE DISCLAIMED. IN NO EVENT SHALL THE REGENTS OR CONTRIBUTORS BE LIABLE FOR ANY DIRECT, INDIRECT, INCIDENTAL, SPECIAL, EXEMPLARY, OR CONSEQUENTIAL DAMAGES (INCLUDING, BUT NOT LIMITED TO, PROCUREMENT OF SUBSTITUTE GOODS OR SERVICES; LOSS OF USE, DATA, OR PROFITS; OR BUSINESS INTERRUPTION) HOWEVER CAUSED AND ON ANY THEORY OF LIABILITY, WHETHER IN CONTRACT, STRICT LIABILITY, OR TORT (INCLUDING NEGLIGENCE OR OTHERWISE) ARISING IN ANY WAY OUT OF THE USE OF THIS SOFTWARE, EVEN IF ADVISED OF THE POSSIBILITY OF SUCH DAMAGE.

(34) - Jon Beniston (only lm32-* targets)

Contributed by Jon Beniston <jon@beniston.com>

Redistribution and use in source and binary forms, with or without modification, are permitted provided that the following conditions are met:

1. Redistributions of source code must retain the above copyright notice, this list of conditions and the following disclaimer.
2. Redistributions in binary form must reproduce the above copyright notice, this list of conditions and the following disclaimer in the documentation and/or other materials provided with the distribution.

THIS SOFTWARE IS PROVIDED BY THE AUTHOR AND CONTRIBUTORS "AS IS" AND ANY EXPRESS OR IMPLIED WARRANTIES, INCLUDING, BUT NOT LIMITED TO, THE IMPLIED WARRANTIES OF MERCHANTABILITY AND FITNESS FOR A PARTICULAR PURPOSE ARE DISCLAIMED. IN NO EVENT SHALL THE AUTHOR OR CONTRIBUTORS BE LIABLE FOR ANY DIRECT, INDIRECT, INCIDENTAL, SPECIAL, EXEMPLARY, OR CONSEQUENTIAL DAMAGES (INCLUDING, BUT NOT LIMITED TO, PROCUREMENT OF SUBSTITUTE GOODS OR SERVICES; LOSS OF USE, DATA, OR PROFITS; OR BUSINESS INTERRUPTION) HOWEVER CAUSED AND ON ANY THEORY OF LIABILITY, WHETHER IN CONTRACT, STRICT LIABILITY, OR TORT (INCLUDING NEGLIGENCE OR OTHERWISE) ARISING IN ANY WAY OUT OF THE USE OF THIS SOFTWARE, EVEN IF ADVISED OF THE POSSIBILITY OF SUCH DAMAGE.

(35) - ARM Ltd (arm and thumb variant targets only)

Copyright (c) 2009 ARM Ltd
All rights reserved.

Redistribution and use in source and binary forms, with or without modification, are permitted provided that the following conditions are met:

1. Redistributions of source code must retain the above copyright notice, this list of conditions and the following disclaimer.
2. Redistributions in binary form must reproduce the above copyright notice, this list of conditions and the following disclaimer in the documentation and/or other materials provided with the distribution.
3. The name of the company may not be used to endorse or promote products derived from this software without specific prior written permission.

THIS SOFTWARE IS PROVIDED BY ARM LTD "AS IS" AND ANY EXPRESS OR IMPLIED WARRANTIES, INCLUDING, BUT NOT LIMITED TO, THE IMPLIED WARRANTIES OF MERCHANTABILITY AND FITNESS FOR A PARTICULAR PURPOSE ARE DISCLAIMED. IN NO EVENT SHALL ARM LTD BE LIABLE FOR ANY DIRECT, INDIRECT, INCIDENTAL, SPECIAL, EXEMPLARY, OR CONSEQUENTIAL DAMAGES (INCLUDING, BUT NOT LIMITED TO, PROCUREMENT OF SUBSTITUTE GOODS OR SERVICES; LOSS OF USE, DATA, OR PROFITS; OR BUSINESS INTERRUPTION) HOWEVER CAUSED AND ON ANY THEORY OF LIABILITY, WHETHER IN CONTRACT, STRICT LIABILITY, OR TORT (INCLUDING NEGLIGENCE OR OTHERWISE) ARISING IN ANY WAY OUT OF THE USE OF THIS SOFTWARE, EVEN IF ADVISED OF THE POSSIBILITY OF SUCH DAMAGE.

(36) - Xilinx, Inc. (microblaze-* and powerpc-* targets)

Copyright (c) 2004, 2009 Xilinx, Inc. All rights reserved.

Redistribution and use in source and binary forms, with or without modification, are permitted provided that the following conditions are met:

1. Redistributions source code must retain the above copyright notice, this list of conditions and the following disclaimer.
2. Redistributions in binary form must reproduce the above copyright notice, this list of conditions and the following disclaimer in the documentation and/or other materials provided with the distribution.
3. Neither the name of Xilinx nor the names of its contributors may be used to endorse or promote products derived from this software without specific prior written permission.

THIS SOFTWARE IS PROVIDED BY THE COPYRIGHT HOLDER AND CONTRIBUTORS "AS IS" AND ANY EXPRESS OR IMPLIED WARRANTIES, INCLUDING, BUT NOT LIMITED TO, THE IMPLIED WARRANTIES OF MERCHANTABILITY AND FITNESS FOR A PARTICULAR PURPOSE ARE DISCLAIMED. IN NO EVENT SHALL THE COPYRIGHT HOLDER OR CONTRIBUTORS BE LIABLE FOR ANY DIRECT, INDIRECT, INCIDENTAL, SPECIAL, EXEMPLARY, OR CONSEQUENTIAL DAMAGES (INCLUDING, BUT NOT LIMITED TO, PROCUREMENT OF SUBSTITUTE GOODS OR SERVICES; LOSS OF USE, DATA, OR PROFITS; OR BUSINESS INTERRUPTION) HOWEVER CAUSED AND ON ANY THEORY OF LIABILITY, WHETHER IN CONTRACT, STRICT LIABILITY, OR TORT (INCLUDING

NEGLIGENCE OR OTHERWISE) ARISING IN ANY WAY OUT OF THE USE OF THIS SOFTWARE, EVEN IF ADVISED OF THE POSSIBILITY OF SUCH DAMAGE.

(37) Texas Instruments Incorporated (tic6x-*, *-tirtos targets)

Copyright (c) 1996-2010,2014 Texas Instruments Incorporated
<http://www.ti.com/>

Redistribution and use in source and binary forms, with or without modification, are permitted provided that the following conditions are met:

Redistributions of source code must retain the above copyright notice, this list of conditions and the following disclaimer.

Redistributions in binary form must reproduce the above copyright notice, this list of conditions and the following disclaimer in the documentation and/or other materials provided with the distribution.

Neither the name of Texas Instruments Incorporated nor the names of its contributors may be used to endorse or promote products derived from this software without specific prior written permission.

THIS SOFTWARE IS PROVIDED BY THE COPYRIGHT HOLDERS AND CONTRIBUTORS "AS IS" AND ANY EXPRESS OR IMPLIED WARRANTIES, INCLUDING, BUT NOT LIMITED TO, THE IMPLIED WARRANTIES OF MERCHANTABILITY AND FITNESS FOR A PARTICULAR PURPOSE ARE DISCLAIMED. IN NO EVENT SHALL THE COPYRIGHT OWNER OR CONTRIBUTORS BE LIABLE FOR ANY DIRECT, INDIRECT, INCIDENTAL, SPECIAL, EXEMPLARY, OR CONSEQUENTIAL DAMAGES (INCLUDING, BUT NOT LIMITED TO, PROCUREMENT OF SUBSTITUTE GOODS OR SERVICES; LOSS OF USE, DATA, OR PROFITS; OR BUSINESS INTERRUPTION) HOWEVER CAUSED AND ON ANY THEORY OF LIABILITY, WHETHER IN CONTRACT, STRICT LIABILITY, OR TORT (INCLUDING NEGLIGENCE OR OTHERWISE) ARISING IN ANY WAY OUT OF THE USE OF THIS SOFTWARE, EVEN IF ADVISED OF THE POSSIBILITY OF SUCH DAMAGE.

(38) National Semiconductor (cr16-* and crx-* targets)

Copyright (c) 2004 National Semiconductor Corporation

The authors hereby grant permission to use, copy, modify, distribute, and license this software and its documentation for any purpose, provided that existing copyright notices are retained in all copies and that this notice is included verbatim in any distributions. No written agreement, license, or royalty fee is required for any of the authorized uses.

Modifications to this software may be copyrighted by their authors and need not follow the licensing terms described here, provided that the new terms are clearly indicated on the first page of each file where they apply.

(39) - Adapteva, Inc. (epiphany-* targets)

Copyright (c) 2011, Adapteva, Inc.
All rights reserved.

Redistribution and use in source and binary forms, with or without modification, are permitted provided that the following conditions are met:

* Redistributions of source code must retain the above copyright notice, this list of conditions and the following disclaimer.

* Redistributions in binary form must reproduce the above copyright notice, this list of conditions and the following disclaimer in the documentation and/or other materials provided with the distribution.

* Neither the name of Adapteva nor the names of its contributors may be used to endorse or promote products derived from this software without specific prior written permission.

THIS SOFTWARE IS PROVIDED BY THE COPYRIGHT HOLDERS AND CONTRIBUTORS "AS IS" AND

ANY EXPRESS OR IMPLIED WARRANTIES, INCLUDING, BUT NOT LIMITED TO, THE IMPLIED WARRANTIES OF MERCHANTABILITY AND FITNESS FOR A PARTICULAR PURPOSE ARE DISCLAIMED. IN NO EVENT SHALL THE COPYRIGHT HOLDER OR CONTRIBUTORS BE LIABLE FOR ANY DIRECT, INDIRECT, INCIDENTAL, SPECIAL, EXEMPLARY, OR CONSEQUENTIAL DAMAGES (INCLUDING, BUT NOT LIMITED TO, PROCUREMENT OF SUBSTITUTE GOODS OR SERVICES; LOSS OF USE, DATA, OR PROFITS; OR BUSINESS INTERRUPTION) HOWEVER CAUSED AND ON ANY THEORY OF LIABILITY, WHETHER IN CONTRACT, STRICT LIABILITY, OR TORT (INCLUDING NEGLIGENCE OR OTHERWISE) ARISING IN ANY WAY OUT OF THE USE OF THIS SOFTWARE, EVEN IF ADVISED OF THE POSSIBILITY OF SUCH DAMAGE.

(40) - Altera Corporation (nios2-* targets)

Copyright (c) 2003 Altera Corporation
All rights reserved.

Redistribution and use in source and binary forms, with or without modification, are permitted provided that the following conditions are met:

- o Redistributions of source code must retain the above copyright notice, this list of conditions and the following disclaimer.
- o Redistributions in binary form must reproduce the above copyright notice, this list of conditions and the following disclaimer in the documentation and/or other materials provided with the distribution.
- o Neither the name of Altera Corporation nor the names of its contributors may be used to endorse or promote products derived from this software without specific prior written permission.

THIS SOFTWARE IS PROVIDED BY ALTERA CORPORATION, THE COPYRIGHT HOLDER, AND ITS CONTRIBUTORS "AS IS" AND ANY EXPRESS OR IMPLIED WARRANTIES, INCLUDING, BUT NOT LIMITED TO, THE IMPLIED WARRANTIES OF MERCHANTABILITY AND FITNESS FOR A PARTICULAR PURPOSE ARE DISCLAIMED. IN NO EVENT SHALL THE COPYRIGHT HOLDER OR CONTRIBUTORS BE LIABLE FOR ANY DIRECT, INDIRECT, INCIDENTAL, SPECIAL, EXEMPLARY, OR CONSEQUENTIAL DAMAGES (INCLUDING, BUT NOT LIMITED TO, PROCUREMENT OF SUBSTITUTE GOODS OR SERVICES; LOSS OF USE, DATA, OR PROFITS; OR BUSINESS INTERRUPTION) HOWEVER CAUSED AND ON ANY THEORY OF LIABILITY, WHETHER IN CONTRACT, STRICT LIABILITY, OR TORT (INCLUDING NEGLIGENCE OR OTHERWISE) ARISING IN ANY WAY OUT OF THE USE OF THIS SOFTWARE, EVEN IF ADVISED OF THE POSSIBILITY OF SUCH DAMAGE.

(41) Ed Schouten - Free BSD

Copyright (c) 2008 Ed Schouten <ed@FreeBSD.org>
All rights reserved.

Redistribution and use in source and binary forms, with or without modification, are permitted provided that the following conditions are met:

1. Redistributions of source code must retain the above copyright notice, this list of conditions and the following disclaimer.
2. Redistributions in binary form must reproduce the above copyright notice, this list of conditions and the following disclaimer in the documentation and/or other materials provided with the distribution.

THIS SOFTWARE IS PROVIDED BY THE AUTHOR AND CONTRIBUTORS "AS IS" AND ANY EXPRESS OR IMPLIED WARRANTIES, INCLUDING, BUT NOT LIMITED TO, THE IMPLIED WARRANTIES OF MERCHANTABILITY AND FITNESS FOR A PARTICULAR PURPOSE ARE DISCLAIMED. IN NO EVENT SHALL THE AUTHOR OR CONTRIBUTORS BE LIABLE FOR ANY DIRECT, INDIRECT, INCIDENTAL, SPECIAL, EXEMPLARY, OR CONSEQUENTIAL DAMAGES (INCLUDING, BUT NOT LIMITED TO, PROCUREMENT OF SUBSTITUTE GOODS OR SERVICES; LOSS OF USE, DATA, OR PROFITS; OR BUSINESS INTERRUPTION) HOWEVER CAUSED AND ON ANY THEORY OF LIABILITY, WHETHER IN CONTRACT, STRICT LIABILITY, OR TORT (INCLUDING NEGLIGENCE OR OTHERWISE) ARISING IN ANY WAY OUT OF THE USE OF THIS SOFTWARE, EVEN IF ADVISED OF THE POSSIBILITY OF SUCH DAMAGE.

Copyright 1992-2012 The FreeBSD Project. All rights reserved.

Redistribution and use in source and binary forms, with or without modification,

are permitted provided that the following conditions are met:

1. Redistributions of source code must retain the above copyright notice, this list of conditions and the following disclaimer.
2. Redistributions in binary form must reproduce the above copyright notice, this list of conditions and the following disclaimer in the documentation and/or other materials provided with the distribution.

THIS SOFTWARE IS PROVIDED BY THE FREEBSD PROJECT "AS IS" AND ANY EXPRESS OR IMPLIED WARRANTIES, INCLUDING, BUT NOT LIMITED TO, THE IMPLIED WARRANTIES OF MERCHANTABILITY AND FITNESS FOR A PARTICULAR PURPOSE ARE DISCLAIMED. IN NO EVENT SHALL THE FREEBSD PROJECT OR CONTRIBUTORS BE LIABLE FOR ANY DIRECT, INDIRECT, INCIDENTAL, SPECIAL, EXEMPLARY, OR CONSEQUENTIAL DAMAGES (INCLUDING, BUT NOT LIMITED TO, PROCUREMENT OF SUBSTITUTE GOODS OR SERVICES; LOSS OF USE, DATA, OR PROFITS; OR BUSINESS INTERRUPTION) HOWEVER CAUSED AND ON ANY THEORY OF LIABILITY, WHETHER IN CONTRACT, STRICT LIABILITY, OR TORT (INCLUDING NEGLIGENCE OR OTHERWISE) ARISING IN ANY WAY OUT OF THE USE OF THIS SOFTWARE, EVEN IF ADVISED OF THE POSSIBILITY OF SUCH DAMAGE.

The views and conclusions contained in the software and documentation are those of the authors and should not be interpreted as representing official policies, either expressed or implied, of the FreeBSD Project.

** harry-spencer-regex; version alpha3.8p1 -- <https://github.com/garyhouston/regex>
<https://github.com/garyhouston/regex/blob/alpha3.8p1/COPYRIGHT>

Copyright 1992, 1993, 1994, 1997 Henry Spencer. All rights reserved.
This software is not subject to any license of the American Telephone and Telegraph Company or of the Regents of the University of California.

Permission is granted to anyone to use this software for any purpose on any computer system, and to alter it and redistribute it, subject to the following restrictions:

1. The author is not responsible for the consequences of use of this software, no matter how awful, even if they arise from flaws in it.
2. The origin of this software must not be misrepresented, either by explicit claim or by omission. Since few users ever read sources, credits must appear in the documentation.
3. Altered versions must be plainly marked as such, and must not be misrepresented as being the original software. Since few users ever read sources, credits must appear in the documentation.
4. This notice may not be removed or altered.

** WPA supplicant; version 2.9 -- https://linkprotect.cudasvc.com/url?a=https%3a%2f%2fw1.fi%2fwpa_pplicant%2f&c=E,1,JCuzjsaJDsMATRBOuZICYQIH8E0v2LplWbmqfyXaes00MU8a4pBAolwBPXIXKmJR_3ayb8EiAbTXIhIVOfsl8vawEDvUGmsSMUKrr1tJ&typo=1
Copyright (c) 2003-2019, Jouni Malinen <j@w1.fi> and contributors

This software may be distributed, used, and modified under the terms of BSD license:

Redistribution and use in source and binary forms, with or without modification, are permitted provided that the following conditions are met:

1. Redistributions of source code must retain the above copyright notice, this list of conditions and the following disclaimer.
2. Redistributions in binary form must reproduce the above copyright notice, this list of conditions and the following disclaimer in the documentation and/or other materials provided with the distribution.

3. Neither the name(s) of the above-listed copyright holder(s) nor the names of its contributors may be used to endorse or promote products derived from this software without specific prior written permission.

THIS SOFTWARE IS PROVIDED BY THE COPYRIGHT HOLDERS AND CONTRIBUTORS "AS IS" AND ANY EXPRESS OR IMPLIED WARRANTIES, INCLUDING, BUT NOT LIMITED TO, THE IMPLIED WARRANTIES OF MERCHANTABILITY AND FITNESS FOR A PARTICULAR PURPOSE ARE DISCLAIMED. IN NO EVENT SHALL THE COPYRIGHT OWNER OR CONTRIBUTORS BE LIABLE FOR ANY DIRECT, INDIRECT, INCIDENTAL, SPECIAL, EXEMPLARY, OR CONSEQUENTIAL DAMAGES (INCLUDING, BUT NOT LIMITED TO, PROCUREMENT OF SUBSTITUTE GOODS OR SERVICES; LOSS OF USE, DATA, OR PROFITS; OR BUSINESS INTERRUPTION) HOWEVER CAUSED AND ON ANY THEORY OF LIABILITY, WHETHER IN CONTRACT, STRICT LIABILITY, OR TORT (INCLUDING NEGLIGENCE OR OTHERWISE) ARISING IN ANY WAY OUT OF THE USE OF THIS SOFTWARE, EVEN IF ADVISED OF THE POSSIBILITY OF SUCH DAMAGE.

** Bluez; version 5.64 -- https://linkprotect.cudasvc.com/url?a=http%3a%2f%2fwww.bluez.org&c=E,1,rGUGrZydhIepD1pq3XD43lzh2p-jjODVdcR2ia_pplN08YFXyUxJSQRkWitoylFKs8tDgbonWWLsbBzSWpzfzrwOCi9L26vPlevbTsPZJCvYlu7-J7LVi-_&typo=1
Copyright (C) 2000-2001 Qualcomm Incorporated
Copyright (C) 2002-2003 Maxim Krasnyansky <maxk@qualcomm.com>
Copyright (C) 2002-2010 Marcel Holtmann <marcel@holtmann.org>

* Package Bluez's source code may be found at:
https://amazon-source-code-downloads.s3.amazonaws.com/Alexa_Connect_Kit/bluez-5.64.tar.xz

GNU GENERAL PUBLIC LICENSE
Version 2, June 1991

Copyright (C) 1989, 1991 Free Software Foundation, Inc.
51 Franklin St, Fifth Floor, Boston, MA 02110-1301 USA
Everyone is permitted to copy and distribute verbatim copies
of this license document, but changing it is not allowed.

Preamble

The licenses for most software are designed to take away your freedom to share and change it. By contrast, the GNU General Public License is intended to guarantee your freedom to share and change free software--to make sure the software is free for all its users. This General Public License applies to most of the Free Software Foundation's software and to any other program whose authors commit to using it. (Some other Free Software Foundation software is covered by the GNU Library General Public License instead.) You can apply it to your programs, too.

When we speak of free software, we are referring to freedom, not price. Our General Public Licenses are designed to make sure that you have the freedom to distribute copies of free software (and charge for this service if you wish), that you receive source code or can get it if you want it, that you can change the software or use pieces of it in new free programs; and that you know you can do these things.

To protect your rights, we need to make restrictions that forbid anyone to deny you these rights or to ask you to surrender the rights. These restrictions translate to certain responsibilities for you if you distribute copies of the software, or if you modify it.

For example, if you distribute copies of such a program, whether gratis or for a fee, you must give the recipients all the rights that you have. You must make sure that they, too, receive or can get the source code. And you must show them these terms so they know their rights.

We protect your rights with two steps: (1) copyright the software, and (2) offer you this license which gives you legal permission to copy, distribute and/or modify the software.

Also, for each author's protection and ours, we want to make certain that everyone understands that there is no warranty for this free software. If the software is modified by someone else and passed on, we want its recipients to know that what they have is not the original, so that any problems introduced by others will not reflect on the original authors' reputations.

Finally, any free program is threatened constantly by software patents. We wish to avoid the danger that redistributors of a free program will individually obtain patent licenses, in effect making the program proprietary. To prevent this, we have made it clear that any patent must be licensed for everyone's free use or not licensed at all.

The precise terms and conditions for copying, distribution and modification follow.

GNU GENERAL PUBLIC LICENSE TERMS AND CONDITIONS FOR COPYING, DISTRIBUTION AND MODIFICATION

0. This License applies to any program or other work which contains a notice placed by the copyright holder saying it may be distributed under the terms of this General Public License. The "Program", below, refers to any such program or work, and a "work based on the Program" means either the Program or any derivative work under copyright law: that is to say, a work containing the Program or a portion of it, either verbatim or with modifications and/or translated into another language. (Hereinafter, translation is included without limitation in the term "modification".) Each licensee is addressed as "you".

Activities other than copying, distribution and modification are not covered by this License; they are outside its scope. The act of running the Program is not restricted, and the output from the Program is covered only if its contents constitute a work based on the Program (independent of having been made by running the Program). Whether that is true depends on what the Program does.

1. You may copy and distribute verbatim copies of the Program's source code as you receive it, in any medium, provided that you conspicuously and appropriately publish on each copy an appropriate copyright notice and disclaimer of warranty; keep intact all the notices that refer to this License and to the absence of any warranty; and give any other recipients of the Program a copy of this License along with the Program.

You may charge a fee for the physical act of transferring a copy, and you may at your option offer warranty protection in exchange for a fee.

2. You may modify your copy or copies of the Program or any portion of it, thus forming a work based on the Program, and copy and distribute such modifications or work under the terms of Section 1 above, provided that you also meet all of these conditions:

a) You must cause the modified files to carry prominent notices stating that you changed the files and the date of any change.

b) You must cause any work that you distribute or publish, that in whole or in part contains or is derived from the Program or any part thereof, to be licensed as a whole at no charge to all third parties under the terms of this License.

c) If the modified program normally reads commands interactively when run, you must cause it, when started running for such interactive use in the most ordinary way, to print or display an announcement including an appropriate copyright notice and a notice that there is no warranty (or else, saying that you provide a warranty) and that users may redistribute the program under these conditions, and telling the user how to view a copy of this License. (Exception: if the Program itself is interactive but

does not normally print such an announcement, your work based on the Program is not required to print an announcement.)

These requirements apply to the modified work as a whole. If identifiable sections of that work are not derived from the Program, and can be reasonably considered independent and separate works in themselves, then this License, and its terms, do not apply to those sections when you distribute them as separate works. But when you distribute the same sections as part of a whole which is a work based on the Program, the distribution of the whole must be on the terms of this License, whose permissions for other licensees extend to the entire whole, and thus to each and every part regardless of who wrote it.

Thus, it is not the intent of this section to claim rights or contest your rights to work written entirely by you; rather, the intent is to exercise the right to control the distribution of derivative or collective works based on the Program.

In addition, mere aggregation of another work not based on the Program with the Program (or with a work based on the Program) on a volume of a storage or distribution medium does not bring the other work under the scope of this License.

3. You may copy and distribute the Program (or a work based on it, under Section 2) in object code or executable form under the terms of Sections 1 and 2 above provided that you also do one of the following:

a) Accompany it with the complete corresponding machine-readable source code, which must be distributed under the terms of Sections 1 and 2 above on a medium customarily used for software interchange; or,

b) Accompany it with a written offer, valid for at least three years, to give any third party, for a charge no more than your cost of physically performing source distribution, a complete machine-readable copy of the corresponding source code, to be distributed under the terms of Sections 1 and 2 above on a medium customarily used for software interchange; or,

c) Accompany it with the information you received as to the offer to distribute corresponding source code. (This alternative is allowed only for noncommercial distribution and only if you received the program in object code or executable form with such an offer, in accord with Subsection b above.)

The source code for a work means the preferred form of the work for making modifications to it. For an executable work, complete source code means all the source code for all modules it contains, plus any associated interface definition files, plus the scripts used to control compilation and installation of the executable. However, as a special exception, the source code distributed need not include anything that is normally distributed (in either source or binary form) with the major components (compiler, kernel, and so on) of the operating system on which the executable runs, unless that component itself accompanies the executable.

If distribution of executable or object code is made by offering access to copy from a designated place, then offering equivalent access to copy the source code from the same place counts as distribution of the source code, even though third parties are not compelled to copy the source along with the object code.

4. You may not copy, modify, sublicense, or distribute the Program except as expressly provided under this License. Any attempt otherwise to copy, modify, sublicense or distribute the Program is void, and will automatically terminate your rights under this License. However, parties who have received copies, or rights, from you under this License will not have their licenses terminated so long as such parties remain in full compliance.

5. You are not required to accept this License, since you have not signed it. However, nothing else grants you permission to modify or distribute the Program or its derivative works. These actions are prohibited by law if you do not accept this License. Therefore, by modifying or distributing the Program (or any work based on the Program), you indicate your acceptance of this License to do so, and all its terms and conditions for copying, distributing or modifying the Program or works based on it.

6. Each time you redistribute the Program (or any work based on the Program), the recipient automatically receives a license from the original licensor to copy, distribute or modify the Program subject to these terms and conditions. You may not impose any further restrictions on the recipients' exercise of the rights granted herein. You are not responsible for enforcing compliance by third parties to this License.

7. If, as a consequence of a court judgment or allegation of patent infringement or for any other reason (not limited to patent issues), conditions are imposed on you (whether by court order, agreement or otherwise) that contradict the conditions of this License, they do not excuse you from the conditions of this License. If you cannot distribute so as to satisfy simultaneously your obligations under this License and any other pertinent obligations, then as a consequence you may not distribute the Program at all. For example, if a patent license would not permit royalty-free redistribution of the Program by all those who receive copies directly or indirectly through you, then the only way you could satisfy both it and this License would be to refrain entirely from distribution of the Program.

If any portion of this section is held invalid or unenforceable under any particular circumstance, the balance of the section is intended to apply and the section as a whole is intended to apply in other circumstances.

It is not the purpose of this section to induce you to infringe any patents or other property right claims or to contest validity of any such claims; this section has the sole purpose of protecting the integrity of the free software distribution system, which is implemented by public license practices. Many people have made generous contributions to the wide range of software distributed through that system in reliance on consistent application of that system; it is up to the author/donor to decide if he or she is willing to distribute software through any other system and a licensee cannot impose that choice.

This section is intended to make thoroughly clear what is believed to be a consequence of the rest of this License.

8. If the distribution and/or use of the Program is restricted in certain countries either by patents or by copyrighted interfaces, the original copyright holder who places the Program under this License may add an explicit geographical distribution limitation excluding those countries, so that distribution is permitted only in or among countries not thus excluded. In such case, this License incorporates the limitation as if written in the body of this License.

9. The Free Software Foundation may publish revised and/or new versions of the General Public License from time to time. Such new versions will be similar in spirit to the present version, but may differ in detail to address new problems or concerns.

Each version is given a distinguishing version number. If the Program specifies a version number of this License which applies to it and "any later version", you have the option of following the terms and conditions either of that version or of any later version published by the Free Software Foundation. If the Program does not specify a version number of this License, you may choose any version ever published by the Free Software Foundation.

10. If you wish to incorporate parts of the Program into other free programs whose distribution conditions are different, write to the author to ask for permission. For software which is copyrighted by the Free Software Foundation, write to the Free Software Foundation; we sometimes make exceptions for this. Our decision will be guided by the two goals of preserving the free status of all derivatives of our free software and of promoting the sharing and reuse of software generally.

NO WARRANTY

11. BECAUSE THE PROGRAM IS LICENSED FREE OF CHARGE, THERE IS NO WARRANTY FOR THE PROGRAM, TO THE EXTENT PERMITTED BY APPLICABLE LAW. EXCEPT WHEN OTHERWISE STATED IN WRITING THE COPYRIGHT HOLDERS AND/OR OTHER PARTIES PROVIDE THE PROGRAM "AS IS" WITHOUT WARRANTY OF ANY KIND, EITHER EXPRESSED OR IMPLIED, INCLUDING, BUT NOT LIMITED TO, THE IMPLIED WARRANTIES OF MERCHANTABILITY AND FITNESS FOR A PARTICULAR PURPOSE. THE ENTIRE RISK AS TO THE QUALITY AND PERFORMANCE OF THE PROGRAM IS WITH YOU. SHOULD THE PROGRAM PROVE DEFECTIVE, YOU ASSUME THE COST OF ALL NECESSARY SERVICING, REPAIR OR CORRECTION.

12. IN NO EVENT UNLESS REQUIRED BY APPLICABLE LAW OR AGREED TO IN WRITING WILL ANY COPYRIGHT HOLDER, OR ANY OTHER PARTY WHO MAY MODIFY AND/OR REDISTRIBUTE THE PROGRAM AS PERMITTED ABOVE, BE LIABLE TO YOU FOR DAMAGES, INCLUDING ANY GENERAL, SPECIAL, INCIDENTAL OR CONSEQUENTIAL DAMAGES ARISING OUT OF THE USE OR INABILITY TO USE THE PROGRAM (INCLUDING BUT NOT LIMITED TO LOSS OF DATA OR DATA BEING RENDERED INACCURATE OR LOSSES SUSTAINED BY YOU OR THIRD PARTIES OR A FAILURE OF THE PROGRAM TO OPERATE WITH ANY OTHER PROGRAMS), EVEN IF SUCH HOLDER OR OTHER PARTY HAS BEEN ADVISED OF THE POSSIBILITY OF SUCH DAMAGES.

END OF TERMS AND CONDITIONS

How to Apply These Terms to Your New Programs

If you develop a new program, and you want it to be of the greatest possible use to the public, the best way to achieve this is to make it free software which everyone can redistribute and change under these terms.

To do so, attach the following notices to the program. It is safest to attach them to the start of each source file to most effectively convey the exclusion of warranty; and each file should have at least the "copyright" line and a pointer to where the full notice is found.

```
<one line to give the program's name and a brief idea of what it does.>  
Copyright (C) <year> <name of author>
```

This program is free software; you can redistribute it and/or modify it under the terms of the GNU General Public License as published by the Free Software Foundation; either version 2 of the License, or (at your option) any later version.

This program is distributed in the hope that it will be useful, but WITHOUT ANY WARRANTY; without even the implied warranty of MERCHANTABILITY or FITNESS FOR A PARTICULAR PURPOSE. See the GNU General Public License for more details.

You should have received a copy of the GNU General Public License along with this program; if not, write to the Free Software Foundation, Inc., 51 Franklin St, Fifth Floor, Boston, MA 02110-1301 USA

Also add information on how to contact you by electronic and paper mail.

If the program is interactive, make it output a short notice like this when it starts in an interactive mode:

```
Gnomovision version 69, Copyright (C) year name of author  
Gnomovision comes with ABSOLUTELY NO WARRANTY; for details type `show w'.
```

This is free software, and you are welcome to redistribute it under certain conditions; type `show c` for details.

The hypothetical commands `show w` and `show c` should show the appropriate parts of the General Public License. Of course, the commands you use may be called something other than `show w` and `show c`; they could even be mouse-clicks or menu items--whatever suits your program.

You should also get your employer (if you work as a programmer) or your school, if any, to sign a "copyright disclaimer" for the program, if necessary. Here is a sample; alter the names:

Yoyodyne, Inc., hereby disclaims all copyright interest in the program 'Gnomovision' (which makes passes at compilers) written by James Hacker.

<signature of Ty Coon>, 1 April 1989
Ty Coon, President of Vice

This General Public License does not permit incorporating your program into proprietary programs. If your program is a subroutine library, you may consider it more useful to permit linking proprietary applications with the library. If this is what you want to do, use the GNU Library General Public License instead of this License.

** riscv32-esp-elf; version esp-2021r2-patch3-8.4.0 -- <https://github.com/espressif/crosstool-NG>
Copyright (C) 1988-2016 Free Software Foundation, Inc.

* Package riscv32-esp-elf's source code may be found at:
https://amazon-source-code-downloads.s3.amazonaws.com/Alexa_Connect_Kit/riscv32-esp-elf-gcc8_4_0-esp-2021r2-patch3-linux-arm64.tar.gz

GCC RUNTIME LIBRARY EXCEPTION

Version 3.1, 31 March 2009

General information: <http://www.gnu.org/licenses/gcc-exception.html>

Copyright (C) 2009 Free Software Foundation, Inc. <https://linkprotect.cudasvc.com/url?a=http%3a%2f%2ffsf.org%2f&c=E,1jtEKsR8b1Oak5ejmZjhgPwqlRn_Z3oye5qciYZHO6ZOF7cdB7zOMlvVjxnaWFnK78fY6DchFuhJXjXURIKooj-uNintE12wUJ-hQOZ0xlJhNSVW8&typo=1>

Everyone is permitted to copy and distribute verbatim copies of this license document, but changing it is not allowed.

This GCC Runtime Library Exception ("Exception") is an additional permission under section 7 of the GNU General Public License, version 3 ("GPLv3"). It applies to a given file (the "Runtime Library") that bears a notice placed by the copyright holder of the file stating that the file is governed by GPLv3 along with this Exception.

When you use GCC to compile a program, GCC may combine portions of certain GCC header files and runtime libraries with the compiled program. The purpose of this Exception is to allow compilation of non-GPL (including proprietary) programs to use, in this way, the header files and runtime libraries covered by this Exception.

0. Definitions.

A file is an "Independent Module" if it either requires the Runtime Library for execution after a Compilation Process, or makes use of an interface provided by the Runtime Library, but is not otherwise based on the Runtime Library.

"GCC" means a version of the GNU Compiler Collection, with or without modifications, governed by version 3 (or a specified later version) of the GNU General Public License (GPL) with the option of using any subsequent versions published by the FSF.

"GPL-compatible Software" is software whose conditions of propagation,

modification and use would permit combination with GCC in accord with the license of GCC.

“Target Code” refers to output from any compiler for a real or virtual target processor architecture, in executable form or suitable for input to an assembler, loader, linker and/or execution phase. Notwithstanding that, Target Code does not include data in any format that is used as a compiler intermediate representation, or used for producing a compiler intermediate representation.

The “Compilation Process” transforms code entirely represented in non-intermediate languages designed for human-written code, and/or in Java Virtual Machine byte code, into Target Code. Thus, for example, use of source code generators and preprocessors need not be considered part of the Compilation Process, since the Compilation Process can be understood as starting with the output of the generators or preprocessors.

A Compilation Process is “Eligible” if it is done using GCC, alone or with other GPL-compatible software, or if it is done without using any work based on GCC. For example, using non-GPL-compatible Software to optimize any GCC intermediate representations would not qualify as an Eligible Compilation Process.

1. Grant of Additional Permission.

You have permission to propagate a work of Target Code formed by combining the Runtime Library with Independent Modules, even if such propagation would otherwise violate the terms of GPLv3, provided that all Target Code was generated by Eligible Compilation Processes. You may then convey such a combination under terms of your choice, consistent with the licensing of the Independent Modules.

2. No Weakening of GCC Copyleft.

The availability of this Exception does not imply any general presumption that third-party software is unaffected by the copyleft requirements of the license of GCC.

** ceedling; version 0.28.2 -- https://linkprotect.cudasvc.com/url?a=http%3a%2f%2fwww.throwtheswitch.org%2fceedling&c=E,1,Z-bGe739C6ndr7t6nhTnS4UG3WRC2ZorgR86WYQnbb7u-aSRGOohGo8gzW6wQ7w2mG054y7d25SCA1a_4JwhUgLiJhc_-5FeuMj1T90VjD7zjbb1NUuVmCs,&typo=1
Copyright (c) 2007-2019 Mike Karlesky, Mark VanderVoord, Greg Williams

Permission is hereby granted, free of charge, to any person obtaining a copy of this software and associated documentation files (the “Software”), to deal in the Software without restriction, including without limitation the rights to use, copy, modify, merge, publish, distribute, sublicense, and/or sell copies of the Software, and to permit persons to whom the Software is furnished to do so, subject to the following conditions:

The above copyright notice and this permission notice shall be included in all copies or substantial portions of the Software.

The end-user documentation included with the redistribution, if any, must include the following acknowledgment: “This product includes software developed for the Unity Project, by Mike Karlesky, Mark VanderVoord, and Greg Williams and other contributors”, in the same place and form as other third-party acknowledgments. Alternately, this acknowledgment may appear in the software itself, in the same form and location as other such third-party acknowledgments.

THE SOFTWARE IS PROVIDED “AS IS”, WITHOUT WARRANTY OF ANY KIND, EXPRESS OR IMPLIED, INCLUDING BUT NOT LIMITED TO THE WARRANTIES OF MERCHANTABILITY, FITNESS FOR A PARTICULAR PURPOSE AND NONINFRINGEMENT. IN NO EVENT SHALL THE AUTHORS OR COPYRIGHT HOLDERS BE LIABLE FOR ANY CLAIM, DAMAGES OR OTHER LIABILITY, WHETHER IN AN ACTION OF CONTRACT, TORT OR OTHERWISE, ARISING FROM, OUT OF OR IN CONNECTION WITH THE SOFTWARE OR THE USE OR OTHER DEALINGS IN THE SOFTWARE.

** Unity; version 7d2bf62b7e6afaf38153041a9d53c21aeeca9a25 -- <https://github.com/ThrowTheSwitch/Unity/tree/7d2bf62b7e6afaf38153041a9d53c21aeeca9a25>
Copyright (c) 2007 - 2017 Unity Project by Mike Karlesky, Mark VanderVoord, and Greg Williams

The MIT License (MIT)

Copyright (c) <year> 2007-23 Mike Karlesky, Mark VanderVoord, Greg Williams

Permission is hereby granted, free of charge, to any person obtaining a copy of this software and associated documentation files (the "Software"), to deal in the Software without restriction, including without limitation the rights to use, copy, modify, merge, publish, distribute, sublicense, and/or sell copies of the Software, and to permit persons to whom the Software is furnished to do so, subject to the following conditions:

The above copyright notice and this permission notice shall be included in all copies or substantial portions of the Software.

THE SOFTWARE IS PROVIDED "AS IS", WITHOUT WARRANTY OF ANY KIND, EXPRESS OR IMPLIED, INCLUDING BUT NOT LIMITED TO THE WARRANTIES OF MERCHANTABILITY, FITNESS FOR A PARTICULAR PURPOSE AND NONINFRINGEMENT. IN NO EVENT SHALL THE AUTHORS OR COPYRIGHT HOLDERS BE LIABLE FOR ANY CLAIM, DAMAGES OR OTHER LIABILITY, WHETHER IN AN ACTION OF CONTRACT, TORT OR OTHERWISE, ARISING FROM, OUT OF OR IN CONNECTION WITH THE SOFTWARE OR THE USE OR OTHER DEALINGS IN THE SOFTWARE.

** nghttp2; version 1.41.0 -- <https://github.com/nghttp2/nghttp2>
Copyright (c) 2012, 2014, 2015, 2016 Tatsuhiro Tsujikawa

Copyright (c) 2012, 2014, 2015, 2016 nghttp2 contributors

The MIT License

Copyright (c) 2012, 2014, 2015, 2016 Tatsuhiro Tsujikawa

Copyright (c) 2012, 2014, 2015, 2016 nghttp2 contributors

Permission is hereby granted, free of charge, to any person obtaining a copy of this software and associated documentation files (the "Software"), to deal in the Software without restriction, including without limitation the rights to use, copy, modify, merge, publish, distribute, sublicense, and/or sell copies of the Software, and to permit persons to whom the Software is furnished to do so, subject to the following conditions:

The above copyright notice and this permission notice shall be included in all copies or substantial portions of the Software.



THE SOFTWARE IS PROVIDED "AS IS", WITHOUT WARRANTY OF ANY KIND,
EXPRESS OR IMPLIED, INCLUDING BUT NOT LIMITED TO THE WARRANTIES OF
MERCHANTABILITY, FITNESS FOR A PARTICULAR PURPOSE AND
NONINFRINGEMENT. IN NO EVENT SHALL THE AUTHORS OR COPYRIGHT HOLDERS BE
LIABLE FOR ANY CLAIM, DAMAGES OR OTHER LIABILITY, WHETHER IN AN ACTION
OF CONTRACT, TORT OR OTHERWISE, ARISING FROM, OUT OF OR IN CONNECTION
WITH THE SOFTWARE OR THE USE OR OTHER DEALINGS IN THE SOFTWARE.

** libwebsockets; version 4.3.0 -- <https://linkprotect.cudasvc.com?url?a=https%3a%2f%2fwebsockets.org%2f&c=E,1,udrTlcfFCalhElitbPxRahNnZycNOr-hJLPrx1Q4nBy0VJ9o1xb1B6hIH6A8NzZ2eFPvFq0PeZ2qBtmOa7FigorGOYIEaUz1HoC7WMIbvA,&typo=1>
Copyright (C) 2010 - 2019 Andy Green <andy@warmcat.com>

Libwebsockets and included programs are provided under the terms of the MIT license shown below, with the exception that some sources are under a similar permissive license like BSD, or are explicitly CCO / public domain to remove any obstacles from basing differently-licensed code on them.

Original liberal license retained:

- lib/misc/sha-1.c - 3-clause BSD license retained, link to original
- win32port/zlib - ZLIB license (see zlib.h)
- lib/tls/mbedtls/wrapper - Apache 2.0 (only built if linked against mbedtls)
- lib/misc/base64-decode.c - already MIT

Relicensed to MIT:

- lib/misc/daemonize.c - relicensed from Public Domain to MIT, link to original Public Domain version
- lib/plat/windows/windows-resolv.c - relicensed from "Beerware v42" to MIT

Public Domain (CC-zero) to simplify reuse:

- test-apps/*.c
- test-apps/*.h
- minimal-examples/*
- lwsws/*

Although libwebsockets is available under a permissive license, it does not change the reality of dealing with large lumps of external code... if your copy diverges it is guaranteed to contain security problems after a while and can be very painful to pick backports (especially since historically, we are very hot on cleaning and refactoring the codebase). The least painful and lowest risk way remains sending your changes and fixes upstream to us so you can easily use later releases and fixes.

MIT License applied to libwebsockets:

<https://opensource.org/licenses/MIT>

Permission is hereby granted, free of charge, to any person obtaining a copy of this software and associated documentation files (the "Software"), to deal in the Software without restriction, including without limitation the rights to use, copy, modify, merge, publish, distribute, sublicense, and/or sell copies of the Software, and to permit persons to whom the Software is furnished to do so, subject to the following conditions:

The above copyright notice and this permission notice shall be included in

all copies or substantial portions of the Software.

THE SOFTWARE IS PROVIDED "AS IS", WITHOUT WARRANTY OF ANY KIND, EXPRESS OR IMPLIED, INCLUDING BUT NOT LIMITED TO THE WARRANTIES OF MERCHANTABILITY, FITNESS FOR A PARTICULAR PURPOSE AND NONINFRINGEMENT. IN NO EVENT SHALL THE AUTHORS OR COPYRIGHT HOLDERS BE LIABLE FOR ANY CLAIM, DAMAGES OR OTHER LIABILITY, WHETHER IN AN ACTION OF CONTRACT, TORT OR OTHERWISE, ARISING FROM, OUT OF OR IN CONNECTION WITH THE SOFTWARE OR THE USE OR OTHER DEALINGS IN THE SOFTWARE.

** tinycbor; version 0.5.2 -- <https://github.com/intel/tinycbor>
Copyright (c) 2017 Intel Corporation

** aws_iot_sdk; version v4_beta:sha 6f7357a66ff51dc99603e5075cb95b0ef81cfd82 -- <https://github.com/aws/aws-iot-device-sdk-embedded-C>
Copyright (c) 2018 Amazon Web Services

** http-parser; version 2.9.3 -- <https://github.com/nodejs/http-parser>
Copyright Joyent, Inc. and other Node contributors.

** JSMN; version 1.0.0 -- https://linkprotect.cudasvc.com/url?a=https%3a%2f%2fzserge.com%2fjsmn.html&c=E,1,tpeXypdXjB39I5MgXbMXhzQT2QCip8LlLgSu6mQHAb6iwEVa_TO9nP6A5HnLUlwVP_GklPjP_n0tn-4zyDT2bKH10cj_vj1BNKM6c7g_VEHMDA,,&typo=1
Copyright (c) 2010 Serge A. Zaitsev

** cJSON; version 1.7.12 -- <https://github.com/DaveGamble/cJSON>
Copyright (c) 2009-2017 Dave Gamble and cJSON contributors

** bluez-alsa; version 4.0.0 -- <https://github.com/Arkq/bluez-alsa>
Copyright (c) 2016-2020 Arkadiusz Bokowy <arkadiusz.bokowy@gmail.com>

** http-parser; version 2.9.3 -- <https://github.com/nodejs/http-parser>
Copyright Joyent, Inc. and other Node contributors.

** aws_iot_ota; version 3.3.0 -- <https://docs.aws.amazon.com/freertos/latest/userguide/ota-update-library.html>
Copyright (c) 2019-2022 Amazon Web Services

** Amazon FreeRTOS; version 10.3.1 -- <https://aws.amazon.com/freertos/>
Copyright (C) 2017 https://linkprotect.cudasvc.com/url?a=https%3a%2f%2fAmazon.com&c=E,1,_2227N4RnXurcUoyJpdxdLnMtraaumzXlHeSEQfm-k4I9n8ds905Uvt6sf_qh3C4ImlvLyfTusiJxP1c2bhKaa41UwTsyDcPEYKEugbC3gPlcABCQyyjh5vFug,,&typo=1, Inc. or its affiliates. All Rights Reserved.

Copyright (C) 2020 https://linkprotect.cudasvc.com/url?a=https%3a%2f%2fAmazon.com&c=E,1,ki3dOBMNUWbjCxPGqGsE2UYx1EO9EpVv30Cq_zTB-qKFGJU1DyrqPjfb0AqUX8PfZjRmOzJFg_X8KV-ZS0eY9L2459QjR-zmpdhSissjswiHA,,&typo=1, Inc. or its affiliates. All Rights Reserved.

Permission is hereby granted, free of charge, to any person obtaining a copy of this software and associated documentation files (the "Software"), to deal in the Software without restriction, including without limitation the rights to use, copy, modify, merge, publish, distribute, sublicense, and/or sell copies of the Software, and to permit persons to whom the Software is furnished to do so, subject to the following conditions:

The above copyright notice and this permission notice shall be included in all copies or substantial portions of the Software.

THE SOFTWARE IS PROVIDED "AS IS", WITHOUT WARRANTY OF ANY KIND, EXPRESS OR IMPLIED, INCLUDING BUT NOT LIMITED TO THE WARRANTIES OF MERCHANTABILITY, FITNESS FOR A PARTICULAR PURPOSE AND NONINFRINGEMENT. IN NO EVENT SHALL THE AUTHORS OR COPYRIGHT HOLDERS BE LIABLE FOR ANY CLAIM, DAMAGES OR OTHER LIABILITY, WHETHER IN AN ACTION OF CONTRACT, TORT OR OTHERWISE, ARISING FROM, OUT OF OR IN CONNECTION WITH THE SOFTWARE OR THE USE OR OTHER DEALINGS IN THE SOFTWARE.

** openssl; version 1.1.1l -- https://linkprotect.cudasvc.com/url?a=https%3a%2f%2fwww.openssl.org%2fsource%2f&c=E,1,3c3GYgNr2wP1gzjg7Pb3vd uAcA19MVe8cCGol29qGA2djX9nkAl5hn1jeDf3s-axbvs0QMt2WViJdmN8297xe7F6S7-YsoaeTrYZyq_wnHF6Fg3j8QrjBzzluUCe&typo=1
/* Copyright (C) 1995-1998 Eric Young (eay@cryptsoft.com)

LICENSE ISSUES =====

The OpenSSL toolkit stays under a double license, i.e. both the conditions of the OpenSSL License and the original SSLeay license apply to the toolkit. See below for the actual license texts.



OpenSSL License

```
/* =====
 * Copyright (c) 1998-2019 The OpenSSL Project. All rights reserved.
 *
 * Redistribution and use in source and binary forms, with or without
 * modification, are permitted provided that the following conditions
 * are met:
 *
 * 1. Redistributions of source code must retain the above copyright
 * notice, this list of conditions and the following disclaimer.
 *
 * 2. Redistributions in binary form must reproduce the above copyright
 * notice, this list of conditions and the following disclaimer in
 * the documentation and/or other materials provided with the
 * distribution.
 *
 * 3. All advertising materials mentioning features or use of this
 * software must display the following acknowledgment:
 * "This product includes software developed by the OpenSSL Project
 * for use in the OpenSSL Toolkit. (https://linkprotect.cudasvc.com/url?a=http%3a%2f%2fwww.openssl.org%2f&c=E,1,a-k7cbXLhHfl-SiV2d\_fmRAZIOJrd1bmAmVTNVBn1GodtmXbt2TZhUMHHS8SQ5XQ40KUwkVCQAHC\_Sbecz2TKreqb2vdQUMOr\_iBWrO4&typo=1)"
 *
 * 4. The names "OpenSSL Toolkit" and "OpenSSL Project" must not be used to
 * endorse or promote products derived from this software without
 * prior written permission. For written permission, please contact
 * openssl-core@openssl.org.
 *
 * 5. Products derived from this software may not be called "OpenSSL"
 * nor may "OpenSSL" appear in their names without prior written
 * permission of the OpenSSL Project.
 *
 * 6. Redistributions of any form whatsoever must retain the following
 * acknowledgment:
 * "This product includes software developed by the OpenSSL Project
 * for use in the OpenSSL Toolkit (https://linkprotect.cudasvc.com/url?a=http%3a%2f%2fwww.openssl.org%2f&c=E,1,15fVrhJxYaxTijO6Szl-xlG9rIWJZ-urR63XrqKIFofsPA6gZv5hYcZY-FojDrnL\_5W4pZ06oWZJ-fVAweNceA-CvLaXCDTjmmjXoZHqCYWjmHiDrwCatKEVDjg,,&typo=1)"
 *
 * THIS SOFTWARE IS PROVIDED BY THE OpenSSL PROJECT "AS IS" AND ANY
 * EXPRESSED OR IMPLIED WARRANTIES, INCLUDING, BUT NOT LIMITED TO, THE
 * IMPLIED WARRANTIES OF MERCHANTABILITY AND FITNESS FOR A PARTICULAR
 * PURPOSE ARE DISCLAIMED. IN NO EVENT SHALL THE OpenSSL PROJECT OR
 * ITS CONTRIBUTORS BE LIABLE FOR ANY DIRECT, INDIRECT, INCIDENTAL,
 * SPECIAL, EXEMPLARY, OR CONSEQUENTIAL DAMAGES (INCLUDING, BUT
 * NOT LIMITED TO, PROCUREMENT OF SUBSTITUTE GOODS OR SERVICES;
 * LOSS OF USE, DATA, OR PROFITS; OR BUSINESS INTERRUPTION)
 * HOWEVER CAUSED AND ON ANY THEORY OF LIABILITY, WHETHER IN CONTRACT,
 * STRICT LIABILITY, OR TORT (INCLUDING NEGLIGENCE OR OTHERWISE)
 * ARISING IN ANY WAY OUT OF THE USE OF THIS SOFTWARE, EVEN IF ADVISED
 * OF THE POSSIBILITY OF SUCH DAMAGE.
 * =====
 *
 * This product includes cryptographic software written by Eric Young
 * (eay@cryptsoft.com). This product includes software written by Tim
 * Hudson (tjh@cryptsoft.com).
 */
```

Original SSLeay License

```
/* Copyright (C) 1995-1998 Eric Young (eay@cryptsoft.com)
 * All rights reserved.
 *
 * This package is an SSL implementation written
 * by Eric Young (eay@cryptsoft.com).
 * The implementation was written so as to conform with Netscapes SSL.
 */
```

* This library is free for commercial and non-commercial use as long as
 * the following conditions are adhered to. The following conditions
 * apply to all code found in this distribution, be it the RC4, RSA,
 * lhash, DES, etc., code; not just the SSL code. The SSL documentation
 * included with this distribution is covered by the same copyright terms
 * except that the holder is Tim Hudson (tjh@cryptsoft.com).
 *

* Copyright remains Eric Young's, and as such any Copyright notices in
 * the code are not to be removed.
 * If this package is used in a product, Eric Young should be given attribution
 * as the author of the parts of the library used.
 * This can be in the form of a textual message at program startup or
 * in documentation (online or textual) provided with the package.
 *

* Redistribution and use in source and binary forms, with or without
 * modification, are permitted provided that the following conditions
 * are met:

* 1. Redistributions of source code must retain the copyright
 * notice, this list of conditions and the following disclaimer.
 * 2. Redistributions in binary form must reproduce the above copyright
 * notice, this list of conditions and the following disclaimer in the
 * documentation and/or other materials provided with the distribution.
 * 3. All advertising materials mentioning features or use of this software
 * must display the following acknowledgement:
 * "This product includes cryptographic software written by
 * Eric Young (eay@cryptsoft.com)"
 * The word 'cryptographic' can be left out if the routines from the library
 * being used are not cryptographic related :-).
 * 4. If you include any Windows specific code (or a derivative thereof) from
 * the apps directory (application code) you must include an acknowledgement:
 * "This product includes software written by Tim Hudson (tjh@cryptsoft.com)"
 *

* THIS SOFTWARE IS PROVIDED BY ERIC YOUNG "AS IS" AND
 * ANY EXPRESS OR IMPLIED WARRANTIES, INCLUDING, BUT NOT LIMITED TO, THE
 * IMPLIED WARRANTIES OF MERCHANTABILITY AND FITNESS FOR A PARTICULAR PURPOSE
 * ARE DISCLAIMED. IN NO EVENT SHALL THE AUTHOR OR CONTRIBUTORS BE LIABLE
 * FOR ANY DIRECT, INDIRECT, INCIDENTAL, SPECIAL, EXEMPLARY, OR CONSEQUENTIAL
 * DAMAGES (INCLUDING, BUT NOT LIMITED TO, PROCUREMENT OF SUBSTITUTE GOODS
 * OR SERVICES; LOSS OF USE, DATA, OR PROFITS; OR BUSINESS INTERRUPTION)
 * HOWEVER CAUSED AND ON ANY THEORY OF LIABILITY, WHETHER IN CONTRACT, STRICT
 * LIABILITY, OR TORT (INCLUDING NEGLIGENCE OR OTHERWISE) ARISING IN ANY WAY
 * OUT OF THE USE OF THIS SOFTWARE, EVEN IF ADVISED OF THE POSSIBILITY OF
 * SUCH DAMAGE.
 *

* The licence and distribution terms for any publically available version or
 * derivative of this code cannot be changed. i.e. this code cannot simply be
 * copied and put under another distribution licence
 * [including the GNU Public Licence.]
 */

** nanopb; version 0.3.9.8 -- <https://github.com/nanopb/nanopb>
 Copyright (c) 2011 Petteri Aimonen <jpa at https://linkprotect.cudasvc.com/url?a=https%3a%2f%2fnanopb.mail.kapsi.fi&c=E,1,2hypNHuTgPxrUgBCZEpERyFD4zuO3Q-9gtCplXYQSN6NTX4LHqHAKfg--rBwsiMvles_5iWWGgWBWDRVrXKlePxRke1yaP9tl2COvKo3kvt3t50pVZaw5A,,&typo=1>>

This software is provided 'as-is', without any express or implied warranty. In no event will the authors be held liable for any damages arising from the use of this software.

Permission is granted to anyone to use this software for any purpose, including commercial applications, and to alter it and redistribute it freely, subject to the following restrictions:

1. The origin of this software must not be misrepresented; you must not claim that you wrote the original software. If you use this software in a product, an acknowledgment in the product documentation would be appreciated but is not required.



2. Altered source versions must be plainly marked as such, and must not be misrepresented as being the original software.

3. This notice may not be removed or altered from any source distribution.