

Smart Wi-Fi Dimmer Switch, 3-Way Kit



Tapo S515D KIT



Control One Light From Two Spots

0-100% Brightness
Control

Manual, App, and
Voice Control

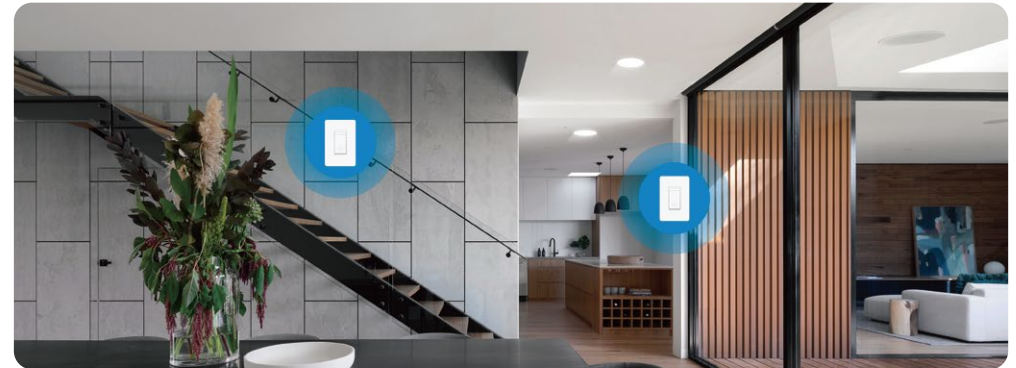
Intuitive Energy
Monitoring



// Highlights

Smart 3-Way Lighting Control

Control a single light from multiple locations for increased flexibility and convenience, perfect for use in living rooms, bedrooms, and staircases.



0-100% Brightness Control

Smoothly set your optimal light brightness within a 0%-100% dimming range for the perfect ambience.



// Highlights

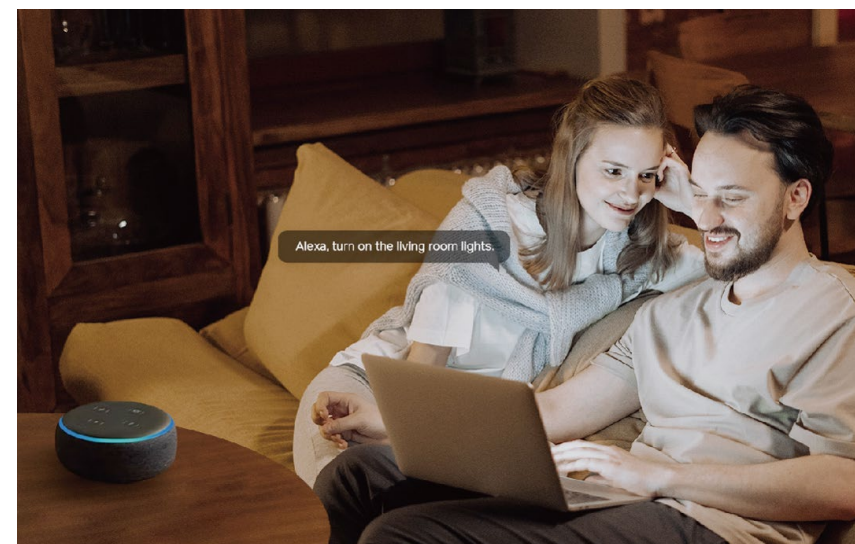
Matter-Compatible

With Matter support, using one app to control all smart devices is no longer a fantasy. Integrate your matter-certified device into your favorite ecosystems to create a unified smart home*.



Free Up Your Hands with Voice Control

Use simple voice commands with Siri®, Alexa, or Google Assistant to conveniently control the lights without leaving your spot.



// Features

Fade On/Off

Smoothly illuminate or dim your lights with the Fade On/Off feature, allowing your eyes to adjust to the new lighting level.

Energy Monitoring

Track detailed daily energy usage and estimated bills with intuitive charts to help you save money.

Away Mode

Away Mode will automatically turn your connected devices, like lights, on and off randomly, to make it appear as if you're home.

Remote Control

Instantly turn connected devices on/off, or set brightness wherever you are through the Tapo app.

Set Custom Schedules

Schedule your lights to turn on, off, or be dimmed at custom times to sync up with your daily routine and preferences.

Local Control

Your connected devices at home remain accessible via the Tapo app even when the household goes offline.

Set Up with Matter

This is a Matter-certified device. You can integrate it into any Matter ecosystem you prefer for easy control.

Before You Start

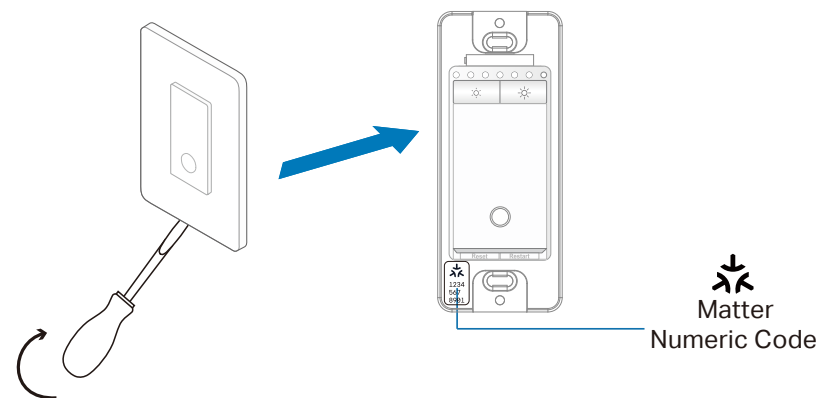
- Factory reset your device before setup.
- A Matter-supported controller and smart home app of the same ecosystem are required. For optimal performance, please update them to the latest version. Note: For **iOS 18 and above**, using a controller is optional. However, with a controller, you can fully enjoy remote control, automation, and other advanced features.
- The Matter setup code on the device is only applicable for the initial ecosystem. To add it to a new ecosystem, please generate a new setup code from a smart home app of an already-established ecosystem in your home.
- Take a photo of the Matter setup code for backup.
- Matter setup will be turned off 15 minutes after the device is powered up. Restart your device to re-enter setup mode.

How to Set Up

*Setup processes may vary between ecosystems.

1. Turn on Bluetooth on your phone.

2. Open the smart home app, then scan the Matter QR code or enter the provided numeric setup code (usually can be found on your device).



3. Follow the instructions in the app to complete setup.

Failed to Set Up?

- Try to connect your phone to a stable 2.4 GHz Wi-Fi network with internet access instead of a 5 GHz network.
- Restart your device, controller or phone.
- Make sure IPv6 is enabled on your router.

Visit

<https://www.tp-link.com/support/faq/3520/>



Scan QR Code



- Matter setup in different ecosystems
- Multi-admin setup and videos
- Features supported in different ecosystems
- Troubleshooting & Help



Matter is still developing and the progress of each platform may differ from one another. There may also be different device performances and bugs that have no relation to the device itself. TP-Link is working hard to optimize user experience with other CSA members to provide better services.



We have professional Technical Support and R&D team. If you have any questions, feel free to contact us. Your feedback matters!



Contact us at www.tp-link.com/support for Technical Support, FAQs & more.

// Specifications

Technical Specifications

- Rating: 120 V~ 60 Hz
- Max Load: Max Load: 300 W INC/HAL, 150 W LED (TRIAC Dimmable)
- Dimming Type[‡]: Leading Edge Dimming/ TRIAC Phase-Cut
- Wireless: IEEE 802.11b/g/n, 2.4 GHz Wi-Fi
- Setup: Bluetooth[†]
- Main Switch Dimensions: 4.13 × 1.71 × 1.78 in (105 × 43.5 × 44.9 mm)
- Main Switch In-wall Depth: 1.35 in (34.2 mm)
- Satellite Switch Dimensions: 4.13 × 1.71 × 1.42 in (105 × 43.5 × 36.1 mm)
- Satellite Switch In-wall Depth: 1.00 in (25.4 mm)

Requirements:

- Neutral wire in wall box
- Standard lighting wall box (at least 2 inches deep)
- Indoor Use Only

The Tapo S515D KIT requires both units to be used together to function in a 3-way installation. The main and satellite dimmers cannot work separately or with traditional 3-way switches.

[†]Bluetooth is only used for setup.

[‡]We suggest contacting your bulbs' support to check the supported dimming type.

Please do not use in damp environments or outdoors.

For more information, please visit <https://www.tapo.com/>

Specifications are subject to change without notice. All brands and product names are trademarks or registered trademarks of their respective holders. Copyright © 2024

General

- Package Contents:

Main Dimmer Switch × 1	Wall Plates × 2
Satellite Dimmer Switch × 1	Wire Nuts × 5
Wire Labels	Quick Start Guide
Screws × 4	
- Certifications: FCC, UL, RoHS
- Main Switch Buttons: Switch button, Reset, Restart, Decrease dimmer button, Increase dimmer button
- Satellite Switch Buttons: Switch button, Decrease dimmer button, Increase dimmer button
- Operating Temperature: 0 °C– 40 °C (32°F–104°F)
- Operating Humidity: 10%–90%RH, Non-condensing

