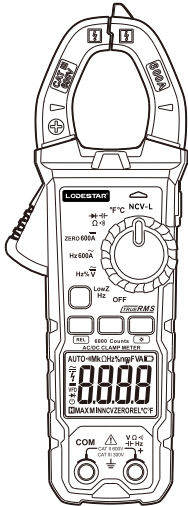


Digital Clamp Meter

LD201+/LD202A+/LD204+/LD206+



Quickly User's Manual

1.Safety information

- (1) This product strictly follows the safety standard of European Electrotechnical Commission EN61010-1 and the technical design standard of China GB T 13978.
- (2) Please read the "safety information" before using the instrument and operate in strict accordance with the provisions.
- (3) Please measure according to the range specified by the product and do not rotate the gear during the measurement process to avoid damage caused by misoperation of the instrument.
- (4) To avoid possible electrical shock, please do not touch the live conductor exceeding 30V AC and 60V DC during measurement.
- (5) When measuring AC and DC over 599V, there will be high voltage lightning symbol display and buzzer beeps, please pay attention to the safety of measurement.
- (6) To avoid danger, do not use in inflammable and explosive environment.
- (7) To avoid measurement error, when the meter display symbol, the battery should be replaced immediately.
- (8) Please check the test pen and wire before measuring whether there is damage and leakage, such as found do not use.
- (9) Please comply with the national regulations and measurement safety standards. Wear insulating gloves or flame retardant products when measuring hazardous voltage.

2. General technical indicator

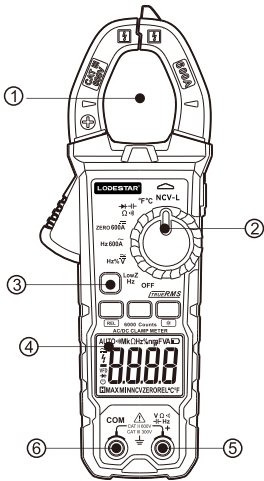
Safety level: CATII 600V CATIII300V
Product range: Automatic

Maximum display: LD201+ display 2000
LD202A+ display 4000
LD204+ LD206+ display 6000
Sampling rate: 3times/S; Overload displayOL
Auto power off: About 15 minutes
Operating temperature: 0~40°C
Precision: 23°C±5°C (18~28°C; Humidity<75%); 1year
Storage temperature: -10~60°C; Storage humidity≤80%
Pollution grade: 2
Altitude: 0~2000m
Safety codes: CE EN61010-1-2-032; EN61010-1-2-033
Electromagnetic environment: EN61326-1-2
Power: AAA 1.5Vx2
Dimensions: 195H x 73W x 36D mm
Weight: 218g (Inclusive of battery)

3.Overview

New technology digital clamp meter, hand-held non-slip ergonomic design, with multi-function, high precision, high performance, anti-drop, safety and stability, etc., can accurately measure AC/DC current, AC/DC voltage, high voltage alarm, frequency, continuity, diode, resistance, capacitor, NCV and Live wire detection, etc., and has misoperation circuit protection, suitable for electrical maintenance and repair of professional electricians, and is a must-have for factory and distribution control system maintenance.

4.Description of appearance



1	Current clamp wire measurement center point	4	LCD Display
2	Dial switch	5	VΩ Voltage resistance red test pen input port
3	Function key	6	COM Common ground black test pen input port

5.LCD Display and symbol

SERIAL NUMBER	SYMBOL	EXPLAIN	REMARK
1	OFF	Turn off the power	
2		Auto power-off	
3		Low battery indication	
4		DC millivolt	
5		DC voltage	
6	TRUE RMS	True RMS	
7		AC voltage	
8	Hz	Frequency	
9	%	Duty cycle measurement	
10	VFD	Frequency conversion measurement	
11		DC current	
12		AC current	
13	Ω KΩ MΩ	Resistance Ω KΩ MΩ	
14		Continuity beeper, Diode	
15		Capacitance nF uF mF	
16	°C	Centigrade scale	
17	°F	Fahrenheit temperature	
18	NCV	Non-contact sensing signal	
19	LIVE	Live wire	
20	KVA	DC Power	

6.Key functions

1	MODE	Switcher mode
2	HOLD	Data hold/Backlight
3	ZERO/REL	Zero clearance/Relative measurement
4	MAX / MIN	Max/Min
5		Flashlight

7.International electrical symbol

1		Be careful! Indicates a dangerous operation
2		High current! Indicates a high voltage hazard warning
3		European Union unified directive, European CE certification
4		Grounding
5		Double insulation or enhanced insulation protection
6		Compliance with WEEE recycling instructions

8. Technical Index

MEASUREMENT RANGE	RESOLUTION	ACCURACY
2A/4A	0.01A	±(3.5%+30)/100Hz
20A/40A	0.01A	
200A/400A	0.1A	±(2%+5)/100Hz
600A/600A	1A	

AC current (LD204+ LD206+)

MEASUREMENT RANGE	RESOLUTION	ACCURACY
40A/60A/60A	0.01A	±(2%+5)/60Hz
400A/600A/600A	0.1A	

DC current (LD204+ LD206+)

MEASUREMENT RANGE	RESOLUTION	ACCURACY
40A/60A/60A	0.01A	±(2%+5)
400A/600A/600A	0.1A	

DC power (LD206+)

MEASUREMENT RANGE	RESOLUTION	ACCURACY
1020KVA	0.01VA	±(3%+30)
0.01~600A	0.01A	±(2%+5)
1V~1700V	1V	±(2%+10)

High voltage detection (LD206+)

MEASUREMENT RANGE	RESOLUTION	ACCURACY
DC1700V	1V	±(2%+10)
AC1000V	1V	
Overload protection	Input impedance6MΩ; 1000Vrms/DC1700V	

AC voltage

MEASUREMENT RANGE	RESOLUTION	ACCURACY
2V/4V/6V	0.001V	±(0.8%+3)/400Hz ±(1.5%+5)/1KHz (LD204+ LD206+)
20V/40V/60V	0.01V	
200V/400V/600V	0.1V	
600V/600V/600V	1V	
VFD: 100V~600V	0.1V	VFD Frequency conversion measurement:100V~600V ±(4%+5)/400Hz(LD206+)
Overload protection	Input impedance10MΩ; 600Vrms	

ACV (LowZ LD204+)

MEASUREMENT RANGE	RESOLUTION	ACCURACY
100V	0.1V	±(0.8%+3)/400Hz
400V	0.1V	±(1.5%+5)/1KHz
600V	0.1V	Measurement time Max 3min
Overload protection	Input impedance10MΩ; 600Vrms	

ACV frequency (LD202A+ LD204+ LD206+)

MEASUREMENT RANGE	RESOLUTION	ACCURACY
10Hz > 5Vrms	0.01Hz	±(0.5%+5)
400Hz > 5Vrms	0.1Hz	
4KHz > 5Vrms	0.001KHz	
40KHz > 5Vrms	0.01KHz	
60KHz > 5Vrms	0.1KHz	(LD204+LD206+)
Overload protection	Input impedance10MΩ; 600Vrms	

DC voltage

MEASUREMENT RANGE	RESOLUTION	ACCURACY
200mV/400mV/600mV	0.1mV	±(0.5%+3)
2V/4V/6V	0.001V	
20V/40V/60V	0.01V	
200V/400V/600V	0.1V	
600V/600V/600V	1V	
Overload protection	Input impedance10MΩ; 600Vrms	

Resistance

MEASUREMENT RANGE	RESOLUTION	ACCURACY
200Ω/400Ω/600Ω	0.1Ω	±(1%+5)
2KΩ/4KΩ/6KΩ	0.001KΩ	
20KΩ/40KΩ/60KΩ	0.01KΩ	
200KΩ/400KΩ/600KΩ	0.1KΩ	
2MΩ/4MΩ/6MΩ	0.001MΩ	±(2%+5)
20MΩ/40MΩ/60MΩ	0.01MΩ	
Overload protection	PTC Thermistor; 600Vrms	

Continuity/Diode/NCV/LIVE

MEASUREMENT RANGE	FUNCTION	ACCURACY
Continuity	Red and black test pen continuity	<30Ω Buzzer beeps
Diode	Measuring diode voltage	Forward0.500V~0.800V; BackwardOL
NCV	Non-contact induction	0~5cm distance sensing, Buzzer beeps and red LED flash
LIVE	Red test pen detects AC fire wire	Detect live wire buzzer beeps, red LED flashing
Overload protection		PTC Thermistor; 600Vrms

Capacitance (LD202A+)

MEASUREMENT RANGE	RESOLUTION	ACCURACY
4nF/40nF/400nF	0.001nF/0.01nF/0.1nF	±(4%+5)
4uF/40uF/400uF	0.001uF/0.01uF/0.1uF	
4000uF	0.01mF	±(8%+5)
Overload protection		PTC Thermistor; 600Vrms

Capacitance (LD204+ LD206+)

MEASUREMENT RANGE	RESOLUTION	ACCURACY
6nF/60nF/600nF	0.001nF/0.01nF/0.1nF	±(4%+5)
6uF/60uF/600uF	0.001uF/0.01uF/0.1uF	
6000uF	0.01mF	±(8%+5)
60mF	0.01mF	
Overload protection	PTC Thermistor; 600Vrms	

Temperature (LD202A+)

MEASUREMENT RANGE	RESOLUTION	ACCURACY
°C: (-40°C~10°C)	1°C	4°C
°C: 10°C~1000°C	1°C	±(1.5%+4°C)

Temperature (LD204+ LD206+)

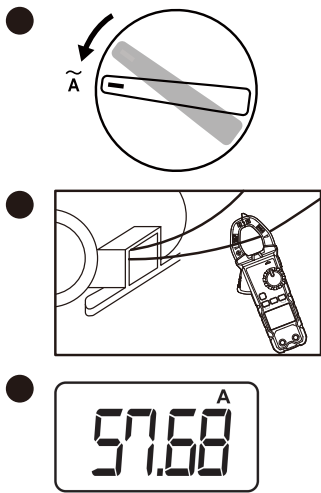
MEASUREMENT RANGE	RESOLUTION	ACCURACY
°C: (-50°C~10°C)		4°C
°C: 10°C~1000°C		±(1.5%+4°C)
°F: (-58°F~50°F)		5°F
°F: 50°F~1832°F		±(2%+5°F)
Overload protection	PTC Thermistor; 600Vrms	

9.Quick tutorial

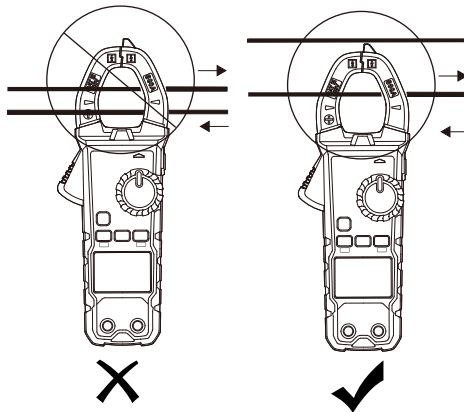
MEASUREMENT RANGE	TEST PEN LINK HOLE	MEASUREMENT EXAMPLE
ACA 0~600A	Clamp line induction	Measure AC current, distribution box load
DCA 0~600A	Clamp line induction	Measure DC current, electric vehicle DC
DC Power1020KVA	Clamp head induced current X DC voltage	Solar and new energy DC electric control system
ACV/Hz/%	BlackCOM VΩ Red	AC voltage 220V/50Hz, duty cycle measurement
ACV (VFD Frequency)	BlackCOM VΩ Red	VFD frequency conversion measurement, such as variable frequency air conditioning voltage
LowZ ACV/Hz	BlackCOM VΩ Red	ACV instability and variable signal measurement
DCV	BlackCOM VΩ Red	Electric vehicle battery voltage 36V/48V
Resistance/Continuity/Diode	BlackCOM VΩ Red	Chip resistance, power resistance
Continuity/Diode	BlackCOM VΩ Red	Continuity buzzer beeps, Diode forward
Capacitance	BlackCOM VΩ Red	SMD capacitance, Electrolytic capacitor
Temperature	BlackCOM VΩ Red	Insert the temperature test pen into the cooling port of the air conditioner
NCV/LIVE	- VΩ Red	Contactless sensing and AC live wire detection

10. Operating Instructions

AC current measurement

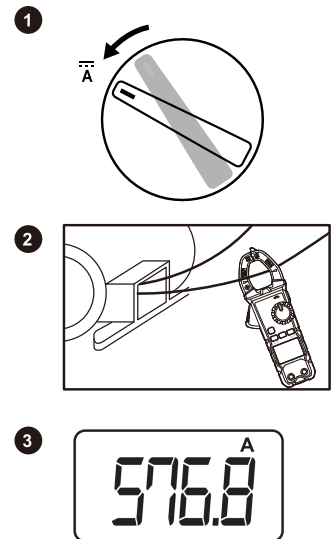


9



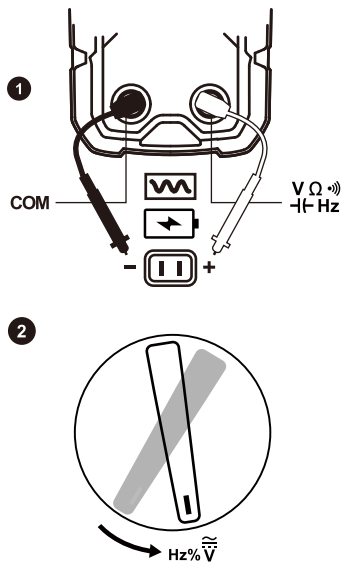
10

DC current measurement

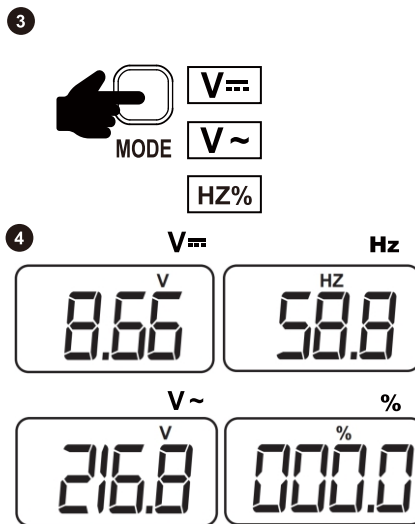


11

AC/DC voltage/frequency Hz (% duty cycle) measurement

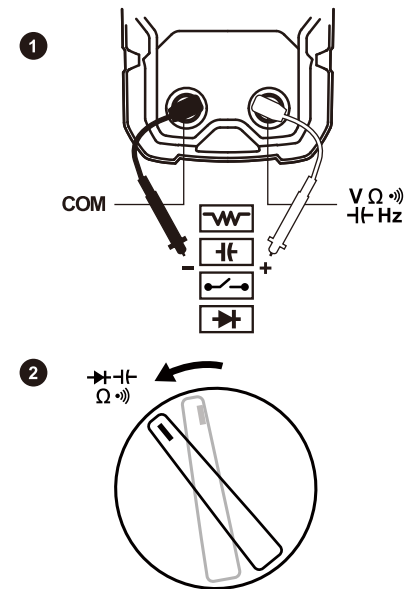


12

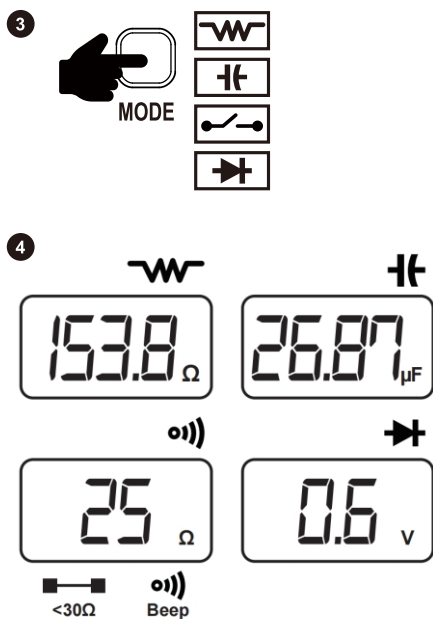


13

Circuit continuity / resistance / diode / capacitor measurement

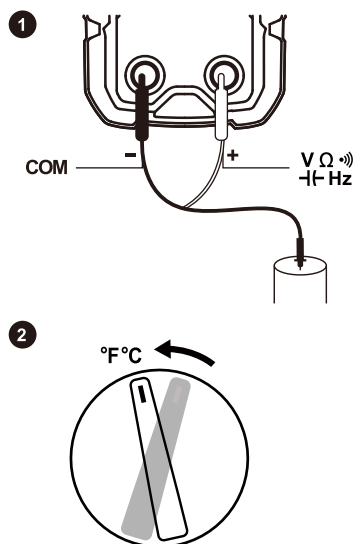


14

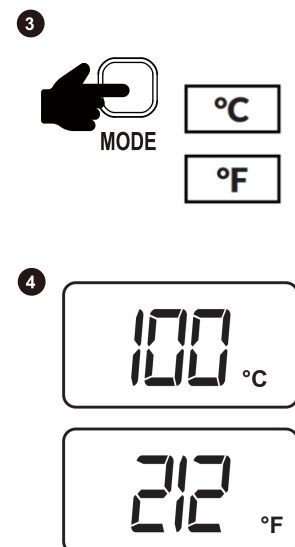


15

Celsius/Fahrenheit ($^{\circ}$ C/ $^{\circ}$ F) measurement

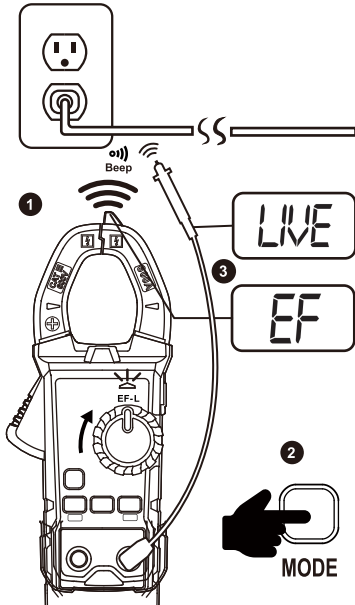


16

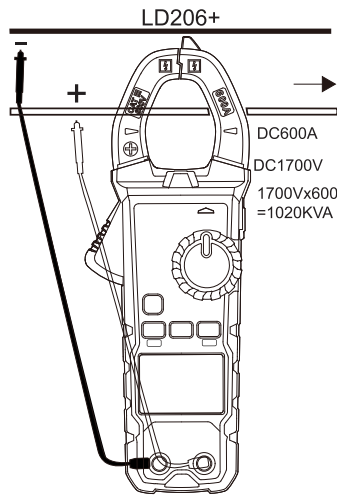


17

NCV non-contact electric field and LIVE live wire identification measurement



DC power measurement



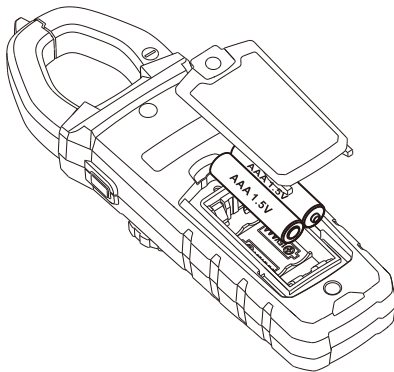
11.Maintenance

(1) Replace the battery ⚠️ ⚠️

Disconnect the test pen from the circuit before replacing the fuse to avoid electric shock.
 Battery specification: LR03-AAA 1.5Vx2
 Please unscrew the battery cover according to the following picture and replace the battery.
 After replacing the battery, ensure that the battery cover is tightly screwed before the meter can be used normally.

(2) Repair ⚠️ ⚠️

Please have the cover open for repairs by an approved and professionally experienced technician. If the fault cannot be solved, please contact the official after-sales service in time. Non-professionals please do not operate to avoid damage to the instrument or risk of electric shock caused by improper maintenance.



Replace the battery diagram



LODESTAR® IS COMMITTED TO CUSTOMER-CENTRICITY

LODESTAR 乐达®

Shenzhen LODESTAR Precision Tool Co., Ltd.
 Address: 2nd Floor, Building 10, Longbi Industrial Zone, Shatian Street, Longgang District, Shenzhen
 After-sales service hotline: (86-755)8253 3796
 Email: lodestar@szlodestar.com.cn

