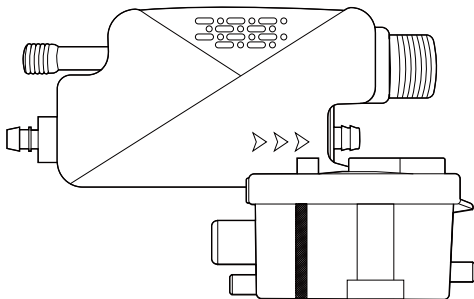


TURBRO

Condensate Pump for Split Unit

Model: CP40

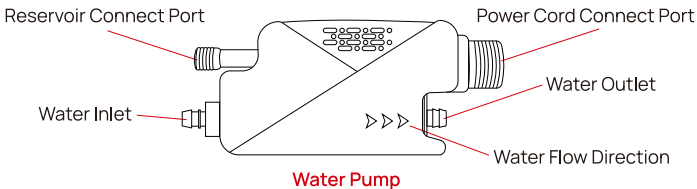
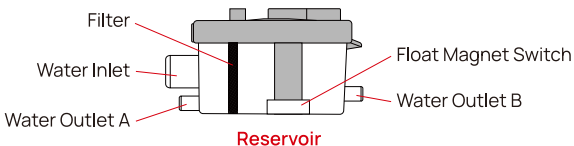


Please read the manual carefully before use and keep it for future reference.



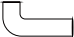
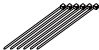



Safety Instructions

- Disconnect all electrical power before installation.
- This product is for a split unit with a maximum rating of 45,000 BTU.
- The pump is for use with water only. Do not run the pump dry.
- Make sure the magnet side of each float is always up and the reservoir is placed evenly.
- It is not recommended to use this unit in greasy or dirty environments.
- Do not operate the unit with wet hands or while standing in water.
- For indoor use only.
- The pump should be connected to an individual power source to ensure that it continues to operate if the air conditioner stops working.
- Do not connect to any voltage other than that shown on the label.

Parts Description



Parts List

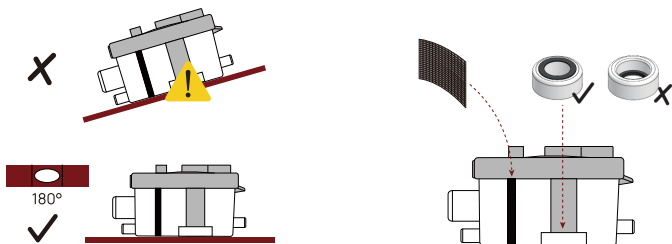
Part Name	Looks Like
Power Cord	
Drain Tube (3/8" outer diameter x 1/4" inner diameter)	
Rubber Tube	
Zip Ties	
Velcro Pads	
Mounting Plate	
Screws*4	

Specification

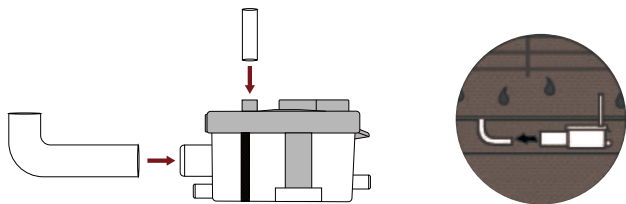
Model	CP40
Voltage	110-240V AC, 50/60Hz
Maximum Flow	10.5gph
Maximum Head	66ft
Maximum Suction Head	6.6ft
Rated Power	5W
Reservoir Capacity	1.4oz
Ambient Operating Temperature	32-158°F

Installation

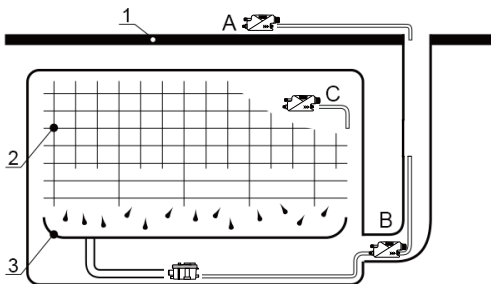
- Before installation, thoroughly clean the coil and the condensate collection of the air conditioner tray to get rid of any moisture or debris.
 - The inflow of water cannot be greater than the allowable output of the drainage pump.
1. Ensure the reservoir is placed horizontally using Velcro or the mounting plate and that the magnet in the float is facing forward. The filter is already in place and the cover should be firmly mounted on the reservoir.



2. Cut a small section of the drain tube as a breather tube and connect it to the reservoir cover port. Ensure the top of the tube is above the maximum water level in the drain tray of the air conditioner. Connect the rubber tube to the water inlet port of the reservoir and connect it to the air conditioner drainage pipe.



3. Install the pump in the evaporator casing, above the ceiling, or inside the line set cover. The image below shows a few options you can choose from.



1: Ceiling

2: Evaporator Casing

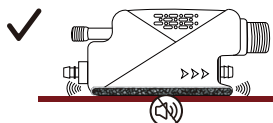
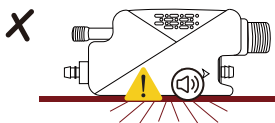
3: Drain Tray

A: On the Ceiling

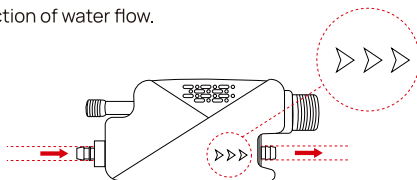
B: Inside Line Set Cover

C: Inside the Evaporator where Space Permits

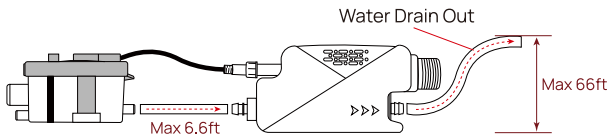
4. Use the velcro to attach the bottom of the pump firmly without vibration to reduce noise during operation.



5. Note the direction of water flow.



- Connect the reservoir to the pump with the drain tube and secure it with a zip tie. The length of the tubing should be less than 6.6ft (2m). Connect the wire attached to the reservoir cap to the connecting port of the pump.
- Prepare a 3/8" outer diameter x 1/4" inner diameter drainage pipe (not included) and connect it to the water outlet of the pump and secure it with a zip tie.



The tube should not be bent to ensure smooth drainage.

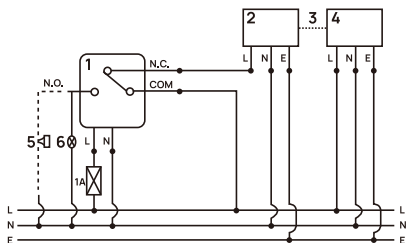


- Wire the product to the power supply. It is not necessary but recommended to connect the signal cable.

Connecting the NC and COM signal wires can stop the air conditioner when the reservoir detects a high water level to avoid water leakage.

Connecting the NO and COM signal wires to an alarm contact sensor or a lamp can tell you the water level is high.

Note: Ensure that the voltage is consistent with the product label voltage and that the wire connection is correct.



- 1: Condensate Pump
- 2: Air Conditioner Indoor Unit
- 3: Air Conditioner Communication Wire between Indoor and Outdoor Unit
- 4: Air Conditioning Outdoor Unit
- 5: Alarm Contact Sensor
- 6: Lamp

Power Cable:

L: Live Wire (Brown)

N: Neutral Wire (Blue)

E: Ground Wire (Yellow and Green Wire)

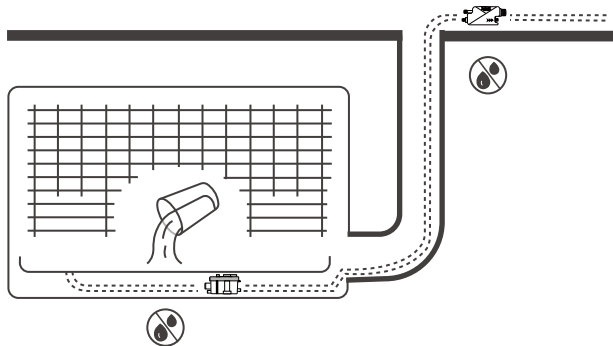
Signal Cable:

N.C: Normally Closed Wire (Purple)

COM: Common Wire (Green)

N.O: Normally Open Wire (Red)

9. Test the pump operation by pouring water into the evaporator tray for a leak check.



Maintenance

It is recommended to check and clean the air conditioner and condensate pump (including filter) every 6 months or more frequently in extreme environments. When replacing the magnet float switch, ensure the side with the magnet is facing up as shown below.



Troubleshooting

Issue	Possible Cause	Possible Solutions
The pump works all the time.	Magnet float switch is not facing up.	Install the float again and ensure the magnet is facing up.
	Pump installation is not horizontal.	Adjust the pump position and make it level.
	The reservoir is dirty.	Clear the reservoir interior and the magnet float switch.
The pump is loud.	The water is siphoning back into the pump.	Check whether the outlet tube is lower than the drainage pump. Raise the pump position.
The pump works but doesn't discharge water outside.	The pipe is clogged.	Check the water tube and solve the water plugging problem.
The pump does not work.	Installation is not horizontal.	Adjust the reservoir position to make sure it is level.
	The power can't reach the pump.	Check whether the power supply is properly plugged in.
	Wiring error.	Check that the wires are properly connected.

WARRANTY & CUSTOMER SUPPORT

Warranty

TURBRO provides a 1-year limited warranty for the condensate pump, from the date of purchase, subject to the following conditions and limitations outlined below.

WHAT IS COVERED?

- This warranty is limited to the repair or replacement of part(s) proved to be defective in material or workmanship after a side defect is confirmed by the manufacturer's inspection.
- The manufacturer may, at its discretion, fully discharge all obligations with respect to this warranty by refunding the wholesale price of the defective part(s).

WHAT IS NOT COVERED?

- Damage caused by the owner when attempting to fix or alter the product themselves.
- Damage caused by misuse, abuse, neglect, alterations, or unauthorized repair.
- Natural depreciation.
- Any alteration or misuse of the product will nullify this warrant.
- This warranty is non-transferable and is effective for the original buyer from the authorized seller only.

HOW TO REQUEST WARRANTY SERVICES?

To obtain the benefit of this warranty, please leave a message online (www.turbro.com/contact), or send an email to support@turbro.com

WHAT WILL TURBRO DO?

- Repair the item.
- Replace the item if not repairable.
- Refund the item under certain circumstances.

Customer Support

We are here to help anytime!

Any problems, write to us via support@turbro.com. We will get back to you within 1 business day.

TURBRO

support@turbro.com

www.turbro.com

(323)438-3334



© Katmai Technology Limited

V20240522

