



Wireless Microphone System DWM-101



INSTRUCTION MANUAL

Transmitter

Input Device



Receiver

Input Device



Parameters

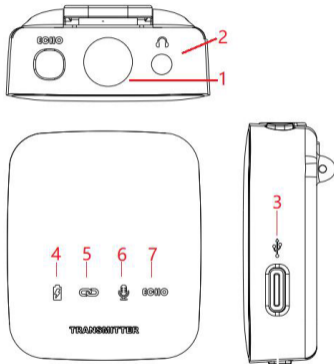
Transmitter

TYPE-C Charging	DC 5V/1A
Connection Distance	15-30M
Standby Power	$\leq 42\mu\text{A}$
Working E-current	$\leq 33\text{mA}$
S/N Ratio	$\geq 75\text{dB}$
Sensitivity	90dB
Battery	3.7V/400mA Polymer battery
Working Time	10H-12H

Receiver

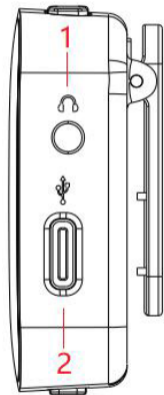
TYPE-C Charging	DC 5V/1A
Connection Distance	15-30M
Standby Power	$\leq 42\mu\text{A}$
Working E-current	$\leq 33\text{mA}$
S/N Ratio	$\geq 75\text{dB}$
Sensitivity	90dB
Frequency Stability	$\pm 10\text{ppm}$
Audio Output	350mv (MAX)
Battery	3.7V/400mA Polymer battery
Working Time	10H-12H

Transmitter Instruction



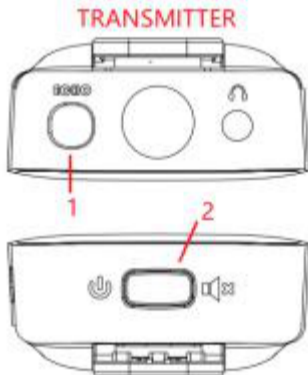
1.Mic	Build-in Mic can't be damping
2.Monitor Earphone	Listen to Mic audio output
3.Type-c Charging	Charging with Adaptor DC/5V, charging port is Type-c
4.Power Indicator	Green-Working, Red-Charging , Blue-Low power
5.Connection Indicator	Stay Green light-connection successful Flash green light-connection failed
6.Mic Indicator	Green light-with noise, Blue light-no noise, Red light-noiseless
7.Echo	Green light-Echo mode, No light-No echo

Receiver Instruction

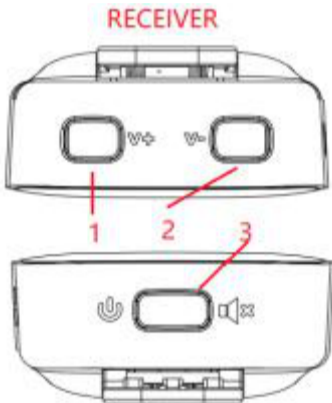


<p>1.Monitor Earphone</p>	<p>Listen to the Mic audio output</p>
<p>2.OTG Mic output Type-charging</p>	<p>OTG (Mic/echo signal output) Charging with Adaptor DC/5V, charging port is Type-c</p>
<p>3.Power Indicator</p>	<p>Green-Working, Red-Charging , Blue-Low power</p>
<p>4.Connection Indicator</p>	<p>Stay Green light-connection successful Flash green light-connection failed</p>
<p>5.Mic Indicator</p>	<p>Green light-with noise, Blue light-no noise, Red light-noiseless</p>
<p>6.Echo Indicator</p>	<p>Green light-Echo mode, No light-No echo</p>

TX Buttons Instruction



RX Buttons Instruction



For Transmitter

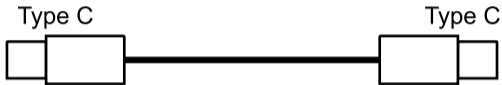
1. ECHO	Long press 2S OFF/ON One Click Noise/No noise
2. POWER MUTE	Long press 2s OFF/ON One click Mute/Working

For Receiver

1. V+	Click: Volume up
2. V-	Click: Volume down
3. Power Mute	Long press 2s OFF/ON One click Mute/Working

Cables Instruction

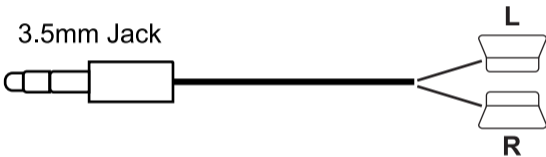
OTG AUDIO OUTPUT



Note : Type-C port for RX, Jack for DSLR

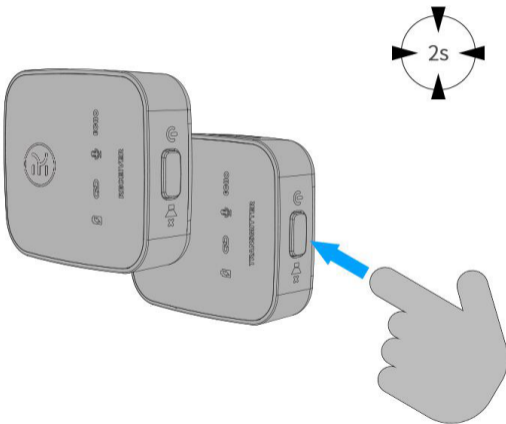
Cables Instruction

MONITOR EARPHONE

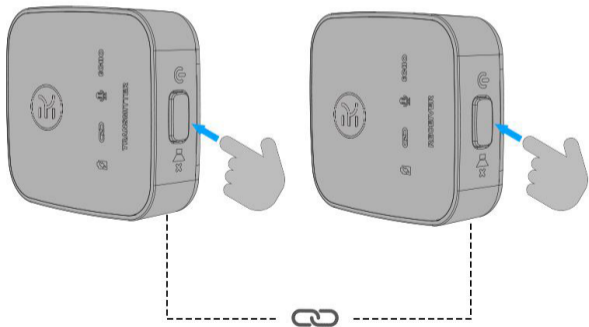
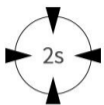


Note: Usually for Receiver

Transmitter & Receiver



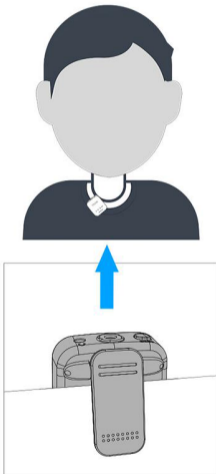
Pairing



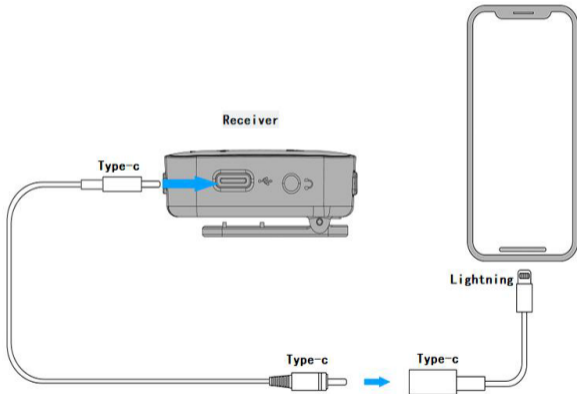
Transmitter with Wind Muff



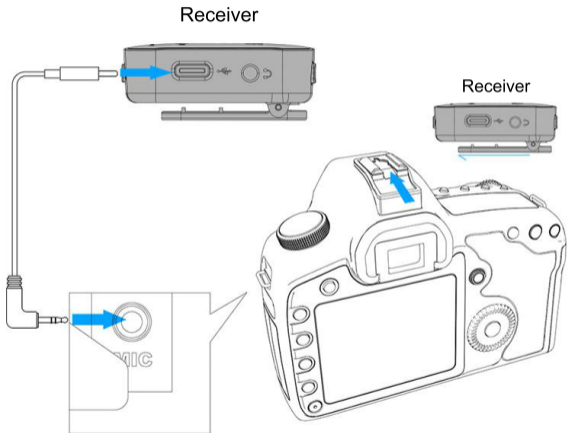
Transmitter Fixed



Connected with Apple Device



Connected with DSLR



For Any Enquiry please contact :

IMS Mercantiles Pvt. Ltd.

#704, Ring Road Mall, Outer Ring Road,

Near Kali Mandir, Sector-3, Rohini, Delhi - 110085

Customer Care Telephone : 1800-123-544-444

E-Mail : support@digitek.net.in Website : www.digitek.net.in