

设计版本号	产品名称 Product name	比例 scale	日期 Date	设计师 Designer	审核 Audit
Rev_V1_EN	DR-HAC010S_美规说明书	1: 1	20260305	Yan/Rachel/Lily	Phil/Laura
	材质印刷与 技术要求 尺寸:210x285mm 材质:封面封底80g书纸 内页:80g书纸 印刷要求:双面印刷,文字线图清晰 装订方式:骑马钉装订	字体 Fonts Manrope	尺寸 Size 210mm × 285mm 3mm 出血		

*此页删除不做印刷

图纸设计禁止修改, 尺寸刀模图为准



	裁切线
	正折线
	反折线
	出血位
	粘胶区域

图层使用规范:
1、备注信息图层为非印刷区域, 展示印刷物料基础信息。 2、刀板线、备注工艺、尺寸层展示印刷工艺部分。 3、画面信息层展示印刷展示图片与文字。 *电子文档为Adobe Illustrator制作
文件格式: model规格类目日期.AI (为可编辑原始文档) 文件格式: model规格类目日期.pdf (为文件转曲不可编辑文档)

审稿 检查事项 会签以“/”形式确认 (负责部门/日期/姓名)
审稿检查事项 商标规范 字符高度 工艺材质 颜色标识
产品文案 条码检查 厂址 全成分 警告标语 执行标准 产品尺寸 外/内箱尺寸 OEM信息* 产品包装信息
请相关部门确认产品、包装等信息! *OEM信息: 委托方及被委托方 信息(名称、地址、 邮编、电话、生产 许可证、卫生许可 证)

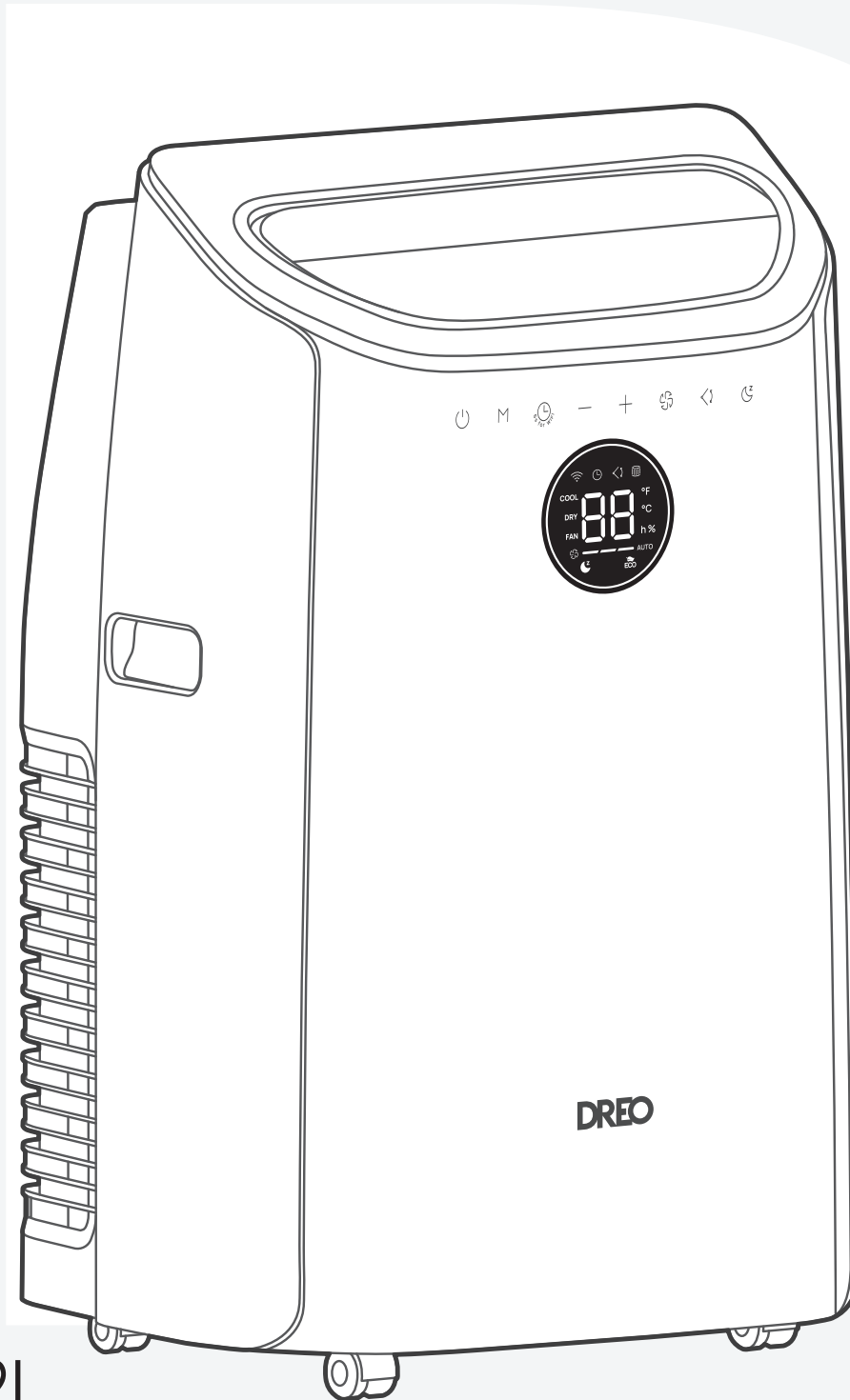
设计师	审核	产品负责人	法规	采购
-----	----	-------	----	----



DREO

Portable Air Conditioner 740S

USER MANUAL



//

Thanks for Choosing DREO!

Your support means the world to us. We hope you enjoy our product as much as we did creating it.

CONTENT

01

IMPORTANT SAFETY
INSTRUCTIONS

1-10

02

ASSEMBLING YOUR
APPLIANCE

11-15

03

CONNECTING TO YOUR
APPLIANCE

16

04

KNOWING YOUR
APPLIANCE

17-18

05

USING YOUR APPLIANCE

19-21

06

CLEANING AND
MAINTENANCE

22-25

07

TROUBLESHOOTING

26

08

DREO CUSTOMER CARE

27-28

IMPORTANT SAFETY INSTRUCTIONS

01



DANGER

DANGER - This symbol indicates immediate hazards which **WILL** result in severe personal injury or death



WARNING

WARNING - This symbol indicates hazards or unsafe practices which **COULD** result in severe personal injury or death



CAUTION

CAUTION - This symbol indicates hazards or unsafe practices which **COULD** result in minor personal injury



WARNING When using electrical appliances, basic safety precautions should be followed, including the following.

General Safety

1. To reduce risk of injury, read this guide before using the appliance.
2. This appliance is not intended for use by persons (including children) with reduced physical sensory or mental capabilities or lack of experience & knowledge, unless the use of the appliance by a person responsible for their safety.
3. Children should be supervised to ensure that they do not play with the appliance.
4. Always unplug the appliance before servicing or moving the unit.

Electricity Safety

1. The appliance must be connected to proper electrical outlet with the correct electrical outlet with the correct electrical supply.
2. Proper grounding must be ensured to reduce the risk of shock and fire, **DO NOT CUT OR REMOVE THE GROUNDING PRONG**. If you do not have a three-prong electric receptacle outlet in the wall, have a certified electrician install the proper receptacle. The wall receptacle **MUST** be properly grounded.
3. **DO NOT USE AN ADAPTER OR AN EXTENSION CORD.**
4. Do not place any object on the top of the unit.
5. If the **SUPPLY CORD** is damaged, it must be replaced by the manufacturer, a service agent or similarly qualified persons in order to avoid a hazard.
6. The appliance shall be installed in accordance with national wiring regulations.

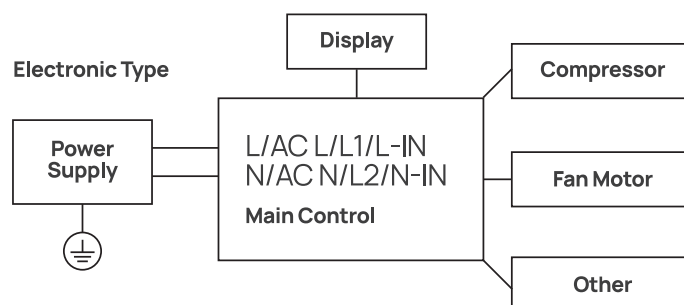
Operation Safety

1. Do not use the appliance near a bathtub, shower or wash basin.
2. Never operate the appliance without filters in place.
3. Do not operate the appliance if power cord is frayed or otherwise damaged. Avoid using it if there are any cracks or abrasion damage along the length, plug connector or if the unit malfunctions or is damaged in any manner. Contact an authorized service technician for examination, repairs or adjustments.
4. Do not block airflow around the appliance. The exhaust hose should be free of any obstructions.
5. Do not install or use the appliance in any area where the atmosphere contains combustible gases or where the atmosphere is oily or sulphurous. Avoid any chemical coming in contact with your appliance.

Electric Work



WARNING BEFORE PERFORMING ANY ELECTRICAL OR WIRING WORK, TURN OFF THE MAIN POWER TO THE SYSTEM.



NOTE: Please strictly follow the wiring label attached to the machine for all wiring connections. The wiring diagram may vary for different units. Please refer to the wiring diagram on the purchased unit. The above wiring diagram is a simplified version for preliminary illustration purposes only.

Handling Alkaline Batteries

WARNING


When handling alkaline batteries, basic safety precautions should be followed, including the following

1. Should fluid from the battery accidentally get into your eyes, there is a threat of loss of eyesight, do not rub them. Immediately rinse your eyes with clean tap water and then consult a physician immediately.
2. Do not put the battery in a fire, expose it to heat, dismantle or modify it. If the insulation or safety valve is damaged, the battery may leak fluid, overheat or explode.
3. Do not insert the battery with the poles reversed. Doing so may cause some abnormality or a short and the battery may leak fluid, overheat or explode.
4. Keep the battery out of the reach of children. If the battery is swallowed, contact a physician immediately.
5. If the alkali fluid gets in your mouth, rinse your mouth with water and contact a physician immediately.
6. If the alkali fluid gets on your skin or clothes, it may burn your skin, thoroughly rinse the affected area with tap water.
7. Do not mix new and old batteries or other makes of batteries. The different attributes may cause the battery to leak fluid, overheat or explode.
8. This battery was not made to be recharged. Recharging this battery may damage the insulation or internal structure and may cause the battery to leak fluid, overheat or explode.
9. Do not damage or remove the label on the exterior of the battery. Doing so may cause the battery to short, leak fluid, overheat or explode.
10. Do not drop, throw or expose the battery to extreme impact. Doing so may cause the battery to leak fluid, overheat or explode.
11. Do not alter the shape of the battery. If the insulation of safety valve is damaged, the battery may leak fluid, overheat or explode.
12. Immediately remove batteries when they have lost all power. Leaving the batteries in the unit for a long time may cause the batteries to leak fluid, overheat or explode due to gas that is generated by the batteries.
13. Remove the batteries from the unit when not using the unit for an extended period of time. The batteries may leak fluid, overheat or explode due to gas that is generated by the batteries.
14. Do not apply solder directly to the batteries. The heat may cause the batteries to leak fluid, overheat or explode.
15. Do not get the batteries wet. Doing so may cause the batteries to overheat.
16. Store batteries someplace out of direct sunlight where the temperature and humidity are not high. Not doing so may cause the batteries to leak fluid, overheat or explode. Also, it may cause the life and performance of the batteries to decline.
17. Follow the regulations of the local government when disposing of these batteries.
18. NEVER mix alkaline, standard (carbon-zinc), rechargeable (nickel-cadmium) batteries with this product.

Grounding Instructions

ELECTRICAL REQUIREMENTS

In the event of malfunction or breakdown, grounding provides a path of least resistance for electric current to reduce the risk of electric shock. The appliance must be connected to a cord having an equipment-grounding conductor and a grounding plug. The plug must be plugged into an appropriate outlet that is properly installed and grounded in accordance with all local codes and ordinances.

 DANGER - Improper connection of the equipment grounding conductor can result in a risk of electric shock. The conductor with insulation having an outer surface that is green with or without yellow stripes is the equipment grounding conductor. If repair or replacement of the cord or plug is necessary, do not connect the equipment-grounding conductor to a live terminal. Check with a qualified electrician or service person if the grounding instructions are not completely understood, or if in doubt as to whether the appliance is properly grounded. Do not modify the plug connected to the appliance - if it will not fit the outlet, have a proper outlet installed by a qualified electrician.

FOR GROUNDED, CORD-CONNECTED APPLIANCE RATED LESS THAN 15A AND INTENDED FOR USE ON A NOMINAL 115V SUPPLY CIRCUIT

- The appliance is for use on a nominal 115V circuit and should be connected to a grounding outlet.
- The use of a temporary adapter is not recommended.

LCDI POWER CORD AND PLUG

This air conditioner is equipped with an LCDI (Leakage Current Detection and Interruption) power cord that is required by UL. This power supply cord contains state-of-the-art electronics that sense leakage current. If the cord is damaged and leakage occurs, power will be disconnected from the unit.

The test and reset buttons on the LCDI Plug are used to check if the plug is functioning properly.

⚠ WARNING: TEST LCDI before each use.

To test the plug:

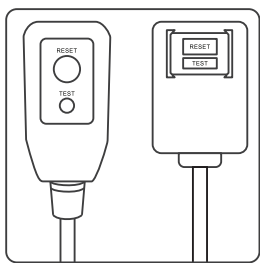
1. Plug power cord into a grounded 3-prong outlet.
2. Press RESET (on some units a green light will turn on).
3. Press the TEST button, the circuit should trip and cut all power to the appliance (on some units green light may turn off).
4. Press the RESET button for use. You will hear a click and the A/C is ready for use.
5. The power supply cord must be replaced if it fails to trip when the TEST button is pressed and the unit fails to reset.

NOTE:

- Do not use this device to turn the unit on or off.
- Always make sure the reset button is pushed in for correct operation.

⚠ WARNING:

- The power supply cord must be replaced if it fails to reset when either the test button is pushed, or it cannot be reset.
- If power supply cord is damaged, it cannot be repaired.
- It must be replaced by one obtained from the product manufacturer.



⚠ WARNING - RISK OF FIRE

- It is important the plug fits tightly into the wall outlet.
- If the plug does not fit securely and appears loose, it should not be used.
- Have a licensed electrician replace the receptacle.

SAFETY GUIDELINES

⚠ WARNING: To prevent injury to the user or other people and property damage, the following instruction must be followed. Incorrect operation due to ignoring of instructions may cause harm or damage.

- Your appliance should be used in such a way that it is protected from moisture. E.g. condensation, splashed water, etc.
- Do not place or store your appliance where it can fall or be pulled to water or any other liquid. Unplug immediately.
- Always transport your appliance in a vertical position and stand on a stable, level surface during use.
- Turn off the product when not in use.
- Always use the switch on the control to start or shut off the unit.
- Always contact a qualified person to carry out repairs. If the supply cord is damaged it must be repaired by a qualified technician.

- Ensure the unit remains at least 3ft (1m) away from any combustible materials such as bedding, curtains, and furniture.
- Keep an air path of at least 12 inches (30cm) all around the unit from walls, furniture and curtains.
- If the appliance is knocked over during use, turn off the unit and unplug from the power supply immediately.
- Do not operate your appliance in a wet room such as a bathroom laundry room.
- Do not touch the unit with wet or damp hands or when barefoot.
- Do not press the buttons on the control panel with anything other than your fingers.
- Do not remove any fixed covers. Never use this appliance if it is not working properly, or if it has been dropped or damaged.
- Never use the plug to start and stop the unit.
- Always use the switch on the control panel to start or shut off the unit.
- Do not cover or obstruct the inlet or outlet grilles.
- Do not use hazardous chemicals to clean or come into contact with the unit. Do not use the unit in the presence of inflammable substances or vapor such as alcohol, insecticides, petrol, etc.
- Do not allow children to operate the unit unsupervised.
- Do not use this product for functions other than those described in this instruction manual.
- Locate the unit where furniture cannot obstruct the air flow.
- Keep blinds/curtains drawn.
- Keep the filters clean.
- Keep doors and windows closed to keep cool air in and warm air out.







Caution: Risk of fire / flammable materials
(Required for R32/R290 units only)



IMPORTANT NOTE: Read this manual carefully before installing or operating your new appliance. Make sure to save this manual for future reference.

EXPLANATION OF SYMBOLS DISPLAYED ON THE UNIT

	WARNING	This symbol shows that this appliance used a flammable refrigerant. If the refrigerant is leaked and exposed to an external ignition source, there is a risk of fire.
	CAUTION	This symbol shows that the operation manual should be read carefully.
	CAUTION	This symbol shows that a service personnel should be handling this equipment with reference to the installation manual.
	CAUTION	This symbol shows that information is available such as the operating manual or installation manual.

⚠ WARNING

1. This appliance is not intended for use by persons (including children) with reduced physical, sensory or mental capabilities, or lack of experience and knowledge, unless they have been given supervision or instruction concerning use of the appliance by a person responsible for their safety.
2. Children should be supervised to ensure that they do not play with the appliance.
3. If the SUPPLY CORD is damaged, it must be replaced by the manufacturer, its service agent or similarly qualified persons in order to avoid a hazard.
4. The appliance shall be installed in accordance with national wiring regulations.
5. Do not use means to accelerate the defrosting process or to clean, other than those recommended by the manufacturer.
6. The appliance shall be stored in a room without continuously operating ignition sources (for example: open flames, an operating gas appliance or an operating electric heater).
7. Do not pierce or burn.
Be aware that refrigerants may not contain an odour.

IMPORTANT SAFEGUARDS

- This appliance is for household use only.
- Disconnect the appliance from its power source during service and when replacing parts and cleaning.
- Please note: Check the nameplate for the type of refrigerant gas used in your appliance.
- Specific information regarding appliances with refrigerant gas.
The appliance is recommended not to pierce the cooling circuit of the machine. At the end of its useful life, deliver the appliance to a special waste collection centre for disposal.
GWP(Global Warming Potential): R410A: 2088, R134a: 1430, R290: 3, R32: 675.
- This hermetically sealed system contains fluoridated greenhouse gases.
- ENVIRONMENTAL INFORMATION: This unit contains fluoridated greenhouse gases covered by the Kyoto Protocol.
- Do not use this unit for functions other than those described in this instruction manual.
- Make sure the plug is plugged firmly and completely into the outlet. It can result in the risk of electric shock or fire.
- Do not plug other appliances into the same outlet, it can result in the risk of electric shock.
- Do not disassemble or modify the appliance or the power cord, it can result in the risk of electric shock or fire. All other services should be referred to a qualified technician.
- Do not place the power cord or appliance near a heater, radiator, or other heat source. It can result in the risk of electric shock or fire.
- This unit is equipped with a cord that has a earthed wire connected to an earthed pin or grounding tab. The plug must be plugged into a socket that is properly installed and earthed. Do not under any circumstances cut or remove the earthed pin or grounding tab from this plug.
- The unit should be used or store in such a way that it is protected from moisture e.g. condensation, splashed water, etc. Unplug unit immediately if this occurs.
- Always transport your appliance in a vertical position and place on a stable, level surface during use. If the unit is transported laying on its side it should be stood up and left unplugged for 6 hours.
- Always use the switch on the control panel or remote controller to turn the unit off, and do not start or stop operation by plugging in or unplugging the power cord. It can result in the risk of electric shock.
- Do not use hazardous chemicals to clean or come into contact with the unit. To prevent damage to the surface finish, use only a soft cloth to clean the appliance. Do not use wax, thinner, or a strong detergent. Do not use the unit in the presence of inflammable substance or vapour such as alcohol, insecticides, gasoline, etc.
- If the appliance is making unusual sounds or is emitting smoke or an unusual odor, unplug it immediately.
- Do not clean the unit with water. Water can enter the unit and damage the insulation, creating a shock hazard. If water enters the unit, unplug it immediately and contact Customer Service.
- Utilize two or more people to lift and install the unit.
- Always grasp the plug when plugging in or unplugging the appliance. Never unplug by pulling on the cord. It can result in the risk of electrical shock and damage.
- Install the appliance on a sturdy, level floor capable of supporting up to 110lbs(50kg). Installation on a weak or unlevel floor can result in the risk of property damage and personal injury.
- The unit's circuit board (PCB) is designed with a fuse to provide overcurrent protection. The specifications of the fuse are printed on the circuit board, such as: T 3.15A/250V, etc.

Information for qualification of workers

All operators or refrigeration system maintenance personnel shall have a valid certificate issued by an industry-recognized evaluation body to certify that they are qualified for the safe disposal of refrigerant agents as recognized by the industry;

Maintain and repair the equipment only in accordance with the method recommended by the equipment manufacturer. If other professionals are required to assist in the maintenance and repair of equipment, do so under the supervision of personnel qualified to use combustible refrigerants.

HH.1 General

Information of procedures additional to usual information for refrigerating appliance installation, repair, maintenance and decommission procedures is required when an appliance with FLAMMABLE REFRIGERANTS is affected.

The training of these procedures is carried out by national training organisations or manufacturers that are accredited to teach the relevant national competency standards that may be set in legislation.

The achieved competence should be documented by a certificate.

HH.2 Information and training

HH.2.1 The training should include the substance of the following:

HH.2.2 Information about the explosion potential of FLAMMABLE REFRIGERANTS to show that flammables may be dangerous when handled without care.

HH.2.3 Information about POTENTIAL IGNITION SOURCES, especially those that are not obvious, such as lighters, light switches, vacuum cleaners, electric heaters.

HH.2.4 Information about the different safety concepts:

Unventilated – Safety of the appliance does not depend on ventilation of the housing. Switching off the appliance or opening of the housing has no significant effect on the safety. Nevertheless, it is possible that leaking refrigerant may accumulate inside the enclosure and flammable atmosphere will be released when the enclosure is opened.

Ventilated enclosure – Safety of the appliance depends on ventilation of the housing. Switching off the appliance or opening of the enclosure has a significant effect on the safety. Care should be taken to ensure sufficient ventilation before.

Ventilated room – Safety of the appliance depends on the ventilation of the room. Switching off the appliance or opening of the housing has no significant effect on the safety. The ventilation of the room shall not be switched off during repair procedures.

HH.2.5 Information about refrigerant detectors:

- Principle of function, including influences on the operation.
- Procedures, how to repair, check or replace a refrigerant detector or parts of it in a safe way.
- Procedures, how to disable a refrigerant detector in case of repair work on the refrigerant carrying parts.

HH.2.6 Information about the concept of sealed components and sealed enclosures according to IEC 60079-15:2010.

a) Commissioning

- Ensure that the floor area is sufficient for the REFRIGERANT CHARGE or that the ventilation duct is assembled in a correct manner.
- Connect the pipes and carry out a leak test before charging with refrigerant.
- Check safety equipment before putting into service.

b) Maintenance

- Portable equipment shall be repaired outside or in a workshop specially equipped for servicing units with FLAMMABLE REFRIGERANTS.
- Ensure sufficient ventilation at the repair place.
- Be aware that malfunction of the equipment may be caused by refrigerant loss and a refrigerant leak is possible.
- Discharge capacitors in a way that won't cause any spark. The standard procedure to short circuit the capacitor terminals usually creates sparks.
- Reassemble sealed enclosures accurately. If seals are worn, replace them.
- Check safety equipment before putting into service.

c) Repair

- Portable equipment shall be repaired outside or in a workshop specially equipped for servicing units with FLAMMABLE REFRIGERANTS.
- Ensure sufficient ventilation at the repair place.
- Be aware that malfunction of the equipment may be caused by refrigerant loss and a refrigerant leak is possible.
- Discharge capacitors in a way that won't cause any spark.
- When brazing is required, the following procedures shall be carried out in the following order:
 - Safely remove the refrigerant following local and national regulations. If the recovery is not required by national regulations, drain the refrigerant to the outside. Take care that the drained refrigerant will not cause any danger. In doubt, one person should guard the outlet. Take special care that drained refrigerant will not float back into the building;
 - Purge the refrigerant circuit with oxygen free nitrogen;
 - Evacuate the refrigerant circuit;
 - Purge the refrigerant circuit with nitrogen for 5 min (not required for A2L refrigerants).
 - Evacuate again (not required for A2L refrigerants).
 - Remove parts to be replaced by cutting or brazing.
 - Purge the braze point with nitrogen during the brazing procedure required for repair.
 - Carry out a leak test before charging with refrigerant.
- Reassemble sealed enclosures accurately. If seals are worn, replace them.
- Check safety equipment before putting into service.

d) Decommissioning

- If the safety is affected when the equipment is putted out of service, the REFRIGERANT CHARGE shall be removed before decommissioning.
- Ensure sufficient ventilation at the equipment location.
- Be aware that malfunction of the equipment may be caused by refrigerant loss and a refrigerant leak is possible.

- Discharge capacitors in a way that won't cause any spark.
- Remove the refrigerant. If the recovery is not required by national regulations, drain the refrigerant to the outside. Take care that the drained refrigerant will not cause any danger. In doubt, one person should guard the outlet. Take special care that drained refrigerant will not float back into the building.
- When FLAMMABLE REFRIGERANTS except A2L REFRIGERANTS are used,
 - Evacuate the refrigerant circuit.
 - Purge the refrigerant circuit with nitrogen for 5 min.
 - Evacuate again.
 - Fill with nitrogen up to atmospheric pressure.
 - Put a label on the equipment that the refrigerant is removed.
- e) Disposal
 - Ensure sufficient ventilation at the working place.
 - Remove the refrigerant. If the recovery is not required by national regulations, drain the refrigerant to the outside. Take care that the drained refrigerant will not cause any danger. In doubt, one person should guard the outlet. Take special care that drained refrigerant will not float back into the building.
 - When flammable refrigerants are used,
 - a) Evacuate the refrigerant circuit.
 - b) Purge the refrigerant circuit with oxygen free nitrogen.
 - c) Evacuate again. (not required for A2L refrigerants)
 - d) Cut out the compressor and drain the oil.

GENERAL INSTRUCTIONS

1.1 Checks to the area

Prior to beginning work on systems containing flammable refrigerants, safety checks are necessary to ensure that the risk of ignition is minimised. For repair to the refrigerating system, the following precautions shall be complied with prior to conducting work on the system.

1.2 Work procedure

Work shall be undertaken under a controlled procedure so as to minimise the risk of a flammable gas or vapour being present while the work is being performed.

1.3 General work area

All maintenance staff and others working in the local area shall be instructed on the nature of work being carried out. Work in confined spaces shall be avoided. The area around the workspace shall be sectioned off. Ensure that the conditions within the area have been made safe by control of flammable material.

1.4 Checking for presence of refrigerant

The area shall be checked with an appropriate refrigerant detector prior to and during work, to ensure the technician is aware of potentially flammable atmospheres. Ensure that the leak detection equipment being used is suitable for use with flammable refrigerants, i.e. nonsparking, adequately sealed or intrinsically safe.

1.5 Presence of fire extinguisher

If any hot work is to be conducted on the refrigeration equipment or any associated parts, appropriate fire extinguishing equipment shall be available to hand. Have a dry powder or CO₂ fire extinguisher adjacent to the charging area.

1.6 No ignition sources

No person carrying out work in relation to a refrigeration system which involves exposing any pipe work that contains or has contained flammable refrigerant shall use any sources of ignition in such a manner that it may lead to the risk of fire or explosion. All possible ignition sources, including cigarette smoking, should be kept sufficiently far away from the site of installation, repairing, removing and disposal, during which flammable refrigerant can possibly be released to the surrounding space. Prior to work taking place, the area around the equipment is to be surveyed to make sure that there are no flammable hazards or ignition risks. "No Smoking" signs shall be displayed.

1.7 Ventilated area

Ensure that the area is in the open or that it is adequately ventilated before breaking into the system or conducting any hot work. A degree of ventilation shall continue during the period that the work is carried out. The ventilation should safely disperse any released refrigerant and preferably expel it externally into the atmosphere.

1.8 Checks to the refrigeration equipment

Where electrical components are being changed, they shall be fit for the purpose and to the correct specification. At all times the manufacturer's maintenance and service guidelines shall be followed. If in doubt consult the manufacturer's technical department for assistance. The following checks shall be applied to installations using flammable refrigerants: the charge size is in accordance with the room size within which the refrigerant containing parts are installed; the ventilation machinery and outlets are operating adequately and are not obstructed; if an indirect refrigerating circuit is

being used, the secondary circuit shall be checked for the presence of refrigerant; marking to the equipment continues to be visible and legible. Markings and signs that are illegible shall be corrected; refrigeration pipe or components are installed in a position where they are unlikely to be exposed to any substance which may corrode refrigerant containing components, unless the components are constructed of materials which are inherently resistant to being corroded or are suitably protected against being so corroded.

1.9 Checks to electrical devices

Repair and maintenance to electrical components shall include initial safety checks and component inspection procedures. If a fault exists that could compromise safety, then no electrical supply shall be connected to the circuit until it is satisfactorily dealt with. If the fault cannot be corrected immediately but it is necessary to continue operation, an adequate temporary solution shall be used. This shall be reported to the owner of the equipment so all parties are advised.

Initial safety checks shall include: that capacitors are discharged: this shall be done in a safe manner to avoid possibility of sparking; that there no live electrical components and wiring are exposed while charging, recovering or purging the system; that there is continuity of earth bonding.

1.10 Sealed electrical components shall be replaced.

REPAIR TO INTRINSICALLY SAFE COMPONENTS

Intrinsically safe components must be replaced.

CABLING

Check that cabling will not be subject to wear, corrosion, excessive pressure, vibration, sharp edges or any other adverse environmental effects. The check shall also take into account the effects of aging or continual vibration from sources such as compressors or fans.

DETECTION OF FLAMMABLE REFRIGERANTS

Under no circumstances shall potential sources of ignition be used in the searching for or detection of refrigerant leaks. A halide torch (or any other detector using a naked flame) shall not be used.

The following leak detection methods are deemed acceptable for all refrigerant systems.

Electronic leak detectors may be used to detect refrigerant leaks but, in the case of FLAMMABLE REFRIGERANTS, the sensitivity may not be adequate, or may need re-calibration. (Detection equipment shall be calibrated in a refrigerant-free area.) Ensure that the detector is not a potential source of ignition and is suitable for the refrigerant used. Leak detection equipment shall be set at a percentage of the LFL of the refrigerant and shall be calibrated to the refrigerant employed, and the appropriate percentage of gas (25 % maximum) is confirmed.

Leak detection fluids are also suitable for use with most refrigerants but the use of detergents containing chlorine shall be avoided as the chlorine may react with the refrigerant and corrode the copper pipe-work.

NOTE Examples of leak detection fluids are

- bubble method,
- fluorescent method agents.

If a leak is suspected, all naked flames shall be removed/extinguished.

If a leakage of refrigerant is found which requires brazing, all of the refrigerant shall be recovered from the system, or isolated (by means of shut off valves) in a part of the system remote from the leak. Removal of refrigerant shall be according to (Removal and evacuation).

REMOVAL AND EVACUATION

When breaking into the refrigerant circuit to make repairs – or for any other purpose – conventional procedures shall be used. However, for flammable refrigerants it is important that best practice be followed, since flammability is a consideration. The following procedure shall be adhered to:

- a) safely remove refrigerant following local and national regulations;
 - evacuate;
 - purge the circuit with inert gas (optional for A2L);
 - evacuate (optional for A2L);
 - continuously flush or purge with inert gas when using flame to open circuit; and
 - open the circuit.

The refrigerant charge shall be recovered into the correct recovery cylinders if venting is not allowed by local and national codes. For appliances containing flammable refrigerants, the system shall be purged with oxygen-free nitrogen to render the appliance safe for flammable refrigerants. This process might need to be repeated several times.

Compressed air or oxygen shall not be used for purging refrigerant systems.

For appliances containing flammable refrigerants, refrigerants purging shall be achieved by breaking the vacuum in the system with oxygen-free nitrogen and continuing to fill until the working pressure is achieved, then venting to atmosphere, and finally pulling down to a vacuum (optional for A2L). This process shall be repeated until no refrigerant is within the system (optional for A2L). When the final oxygen-free nitrogen charge is used, the system shall be vented down to atmospheric pressure to enable work to take place.

Ensure that the outlet for the vacuum pump is not close to any potential ignition sources and that ventilation is available.

CHARGING PROCEDURES

In addition to conventional charging procedures, the following requirements shall be followed.

- Ensure that contamination of different refrigerants does not occur when using charging equipment. Hoses or lines shall be as short as possible to minimise the amount of refrigerant contained in them.
- Cylinders shall be kept in an appropriate position according to the instructions.
- Ensure that the refrigeration system is earthed prior to charging the system with refrigerant.
- Label the system when charging is complete (if not already).
- Extreme care shall be taken not to overfill the refrigeration system.

Prior to recharging the system, it shall be pressure-tested with the appropriate purging gas. The system shall be leak-tested on completion of charging but prior to commissioning. A follow up leak test shall be carried out prior to leaving the site.

DECOMMISSIONING

Before carrying out this procedure, it is essential that the technician is completely familiar with the equipment and all its detail. It is recommended good practice that all refrigerants are recovered safely. Prior to the task being carried out, an oil and refrigerant sample shall be taken in case analysis is required prior to re-use of reclaimed refrigerant. It is essential that electrical power is available before the task is commenced.

a) Become familiar with the equipment and its operation.

b) Isolate system electrically.

c) Before attempting the procedure ensure that :mechanical handling equipment is available, if required, for handling refrigerant cylinders; all personal protective equipment is available and being used correctly; the recovery process is supervised at all times by a competent person; recovery equipment and cylinders conform to the appropriate standards.

d) Pump down refrigerant system, if possible.

e) If a vacuum is not possible, make a manifold so that refrigerant can be removed from various parts of the system.

f) Make sure that cylinder is situated on the scales before recovery takes place.

g) Start the recovery machine and operate in accordance with manufacturer's instructions.

h) Do not overfill cylinders. (No more than 80 % volume liquid charge).

i) Do not exceed the maximum working pressure of the cylinder, even temporarily.

j) When the cylinders have been filled correctly and the process completed, make sure that the cylinders and the equipment are removed from site promptly and all isolation valves on the equipment are closed off.

k) Recovered refrigerant shall not be charged into another refrigeration system unless it has been cleaned and checked.

LABELLING

Equipment shall be labelled stating that it has been decommissioned and emptied of refrigerant. The label shall be dated and signed.

Ensure that there are labels on the equipment stating the equipment contains flammable refrigerant.

Annex CC (informative)

Transportation, marking and storage for units that employ flammable refrigerants

CC.1 General

The following information is provided for units that employ FLAMMABLE REFRIGERANTS.

CC.2 Transport of equipment containing flammable refrigerants

Attention is drawn to the fact that additional transportation regulations may exist with respect to equipment containing flammable gas. The maximum number of pieces of equipment or the configuration of the equipment permitted to be

transported together will be determined by the applicable transport regulations.

CC.3 Marking of equipment using signs

Signs for similar appliances used in a work area are generally addressed by local regulations and give the minimum requirements for the provision of safety and/or health signs for a work location.

All required signs are to be maintained and employers should ensure that employees receive suitable and sufficient instruction and training on the meaning of appropriate safety signs and the actions that need to be taken in connection with these signs.

The effectiveness of signs should not be diminished by too many signs being placed together.

Any pictograms used should be as simple as possible and contain only essential details.

CC.4 Disposal of equipment using flammable refrigerants

See national regulations.

CC.5 Storage of equipment/appliances

The storage of the appliance should be in accordance with the applicable regulations or instructions, whichever is more stringent.

CC.6 Storage of packed (unsold) equipment

Storage package protection should be constructed in such a way that mechanical damage to the equipment inside the package will not cause a leak of the REFRIGERANT CHARGE.

The maximum number of pieces of equipment permitted to be stored together will be determined by local regulations.

RECOVERY

When removing refrigerant from a system, either for servicing or decommissioning, it is recommended good practice that all refrigerants are removed safely. When transferring refrigerant into cylinders, ensure that only appropriate refrigerant recovery cylinders are employed. Ensure that the correct number of cylinders for holding the total system charge are available. All cylinders to be used are designated for the recovered refrigerant and labelled for that refrigerant (i.e. special cylinders for the recovery of refrigerant). Cylinders shall be complete with pressure relief valve and associated shut-off valves in good working order. Empty recovery cylinders are evacuated and, if possible, cooled before recovery occurs.

The recovery equipment shall be in good working order with a set of instructions concerning the equipment that is at hand and shall be suitable for the recovery of flammable refrigerants. In addition, a set of calibrated weighing scales shall be available and in good working order. Hoses shall be complete with leak-free disconnect couplings and in good condition. Before using the recovery machine, check that it is in satisfactory working order, has been properly maintained and that any associated electrical components are sealed to prevent ignition in the event of a refrigerant release. Consult manufacturer if in doubt.

The recovered refrigerant shall be returned to the refrigerant supplier in the correct recovery cylinder, and the relevant Waste Transfer Note arranged. Do not mix refrigerants in recovery units and especially not in cylinders.

If compressors or compressor oils are to be removed, ensure that they have been evacuated to an acceptable level to make certain that flammable refrigerant does not remain within the lubricant. The evacuation process shall be carried out prior to returning the compressor to the suppliers. Only electric heating to the compressor body shall be employed to accelerate this process. When oil is drained from a system, it shall be carried out safely.

FOR HOUSEHOLD USE ONLY READ AND SAVE THESE INSTRUCTIONS

Specifications

Model No.	DR-HAC010S
Rated Voltage	115V~60Hz
R32	380g (13.4 Oz.)

ASSEMBLING YOUR APPLIANCE

02

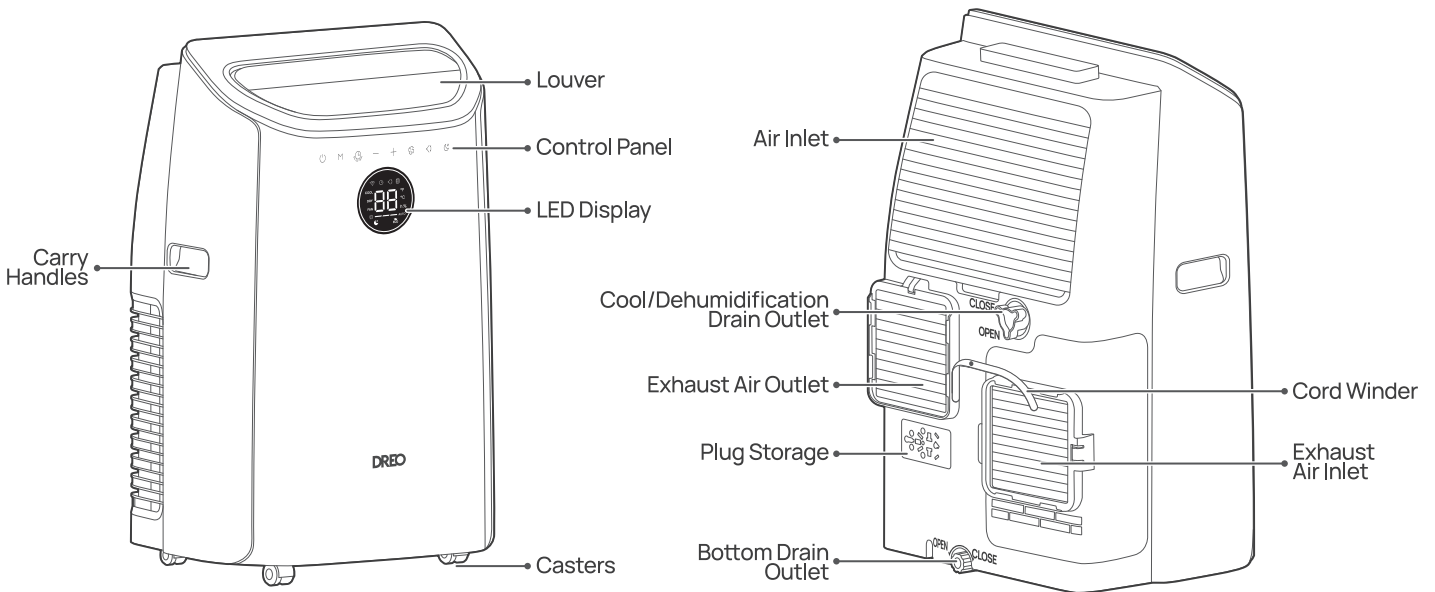


Please keep the appliance upright for at least 6 hours before using the unit for the first time.

Operating Ambient Temperature Range

MODE	Temperature Range
Cool	16-35°C (60-95°F)
Dry	16-35°C (60-95°F)

Package Contents



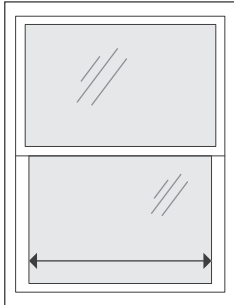
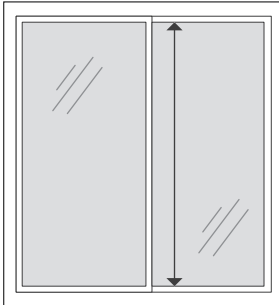
Accessories

	Air Exhaust Hoses x2 Hose Diameter: 5.9-inches Hose Length: 5 ft.		Locking Plate and Screw		Butterfly Bolt
	Window Panel (A)		Window Extension Panel (B)		Window Extension Panel (C)
	Window Extension Panel (D)		Long Foam Seal (Adhesive)		Long Foam Seal (Non-Adhesive)
	Drain Hose x1		Remote Control		Remote Control Battery

Getting Started

1. Preparing the Window Panel

Standard maximum and minimum window openings:
 MAXIMUM: 53.3" (135.3 cm)
 MINIMUM: 20" (50.8 cm)

Hung Window	Sliding Window
 <p>Measure the width between the frames of the opened window. Refer to the table below for compatible window sizes.</p>	 <p>Measure the height between the frames of the opened window. Refer to the table below for compatible window sizes.</p>

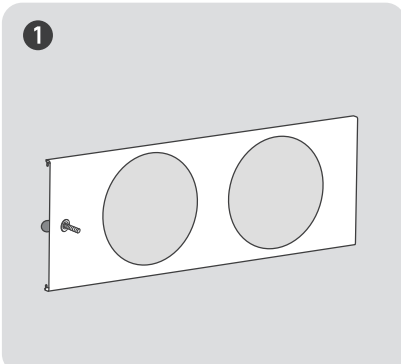
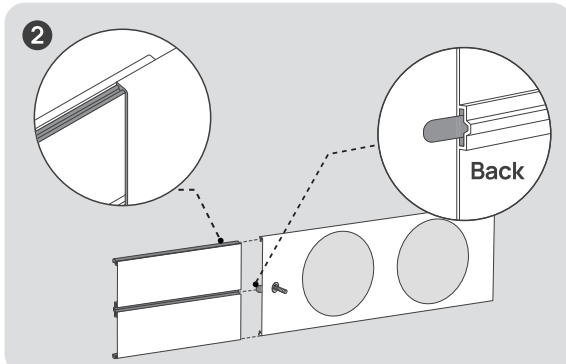
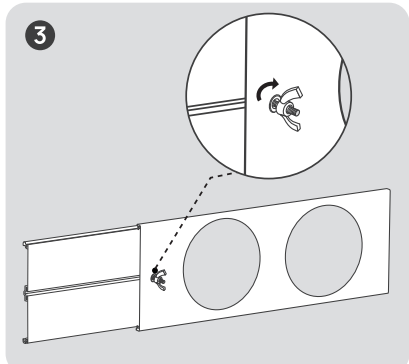
Prepare the corresponding panels to use according to your window opening size:

Window Opening Size	Panels to Use			
	Extension Panel A	Extension Panel B	Extension Panel C	Extension Panel D
20"	✓			
24"-26"	✓	✓		
30"-32"	✓		✓	
35.5"-38"	✓	✓	✓	
38"-47.4"	✓		✓	✓
43.5"-53.3"	✓	✓	✓	✓

Note:

- For openings smaller than 20" proceed to measure and cut the panel A to fit the opening.
- For opening between 20"-24" proceed to measure and cut the panel B to fit the opening.
- For openings larger than 53.3" contact DREO customer support.
- Contact DREO customer support if you need guidance on cutting the panels.

Extension Panel Assembly

- 
- 
- 

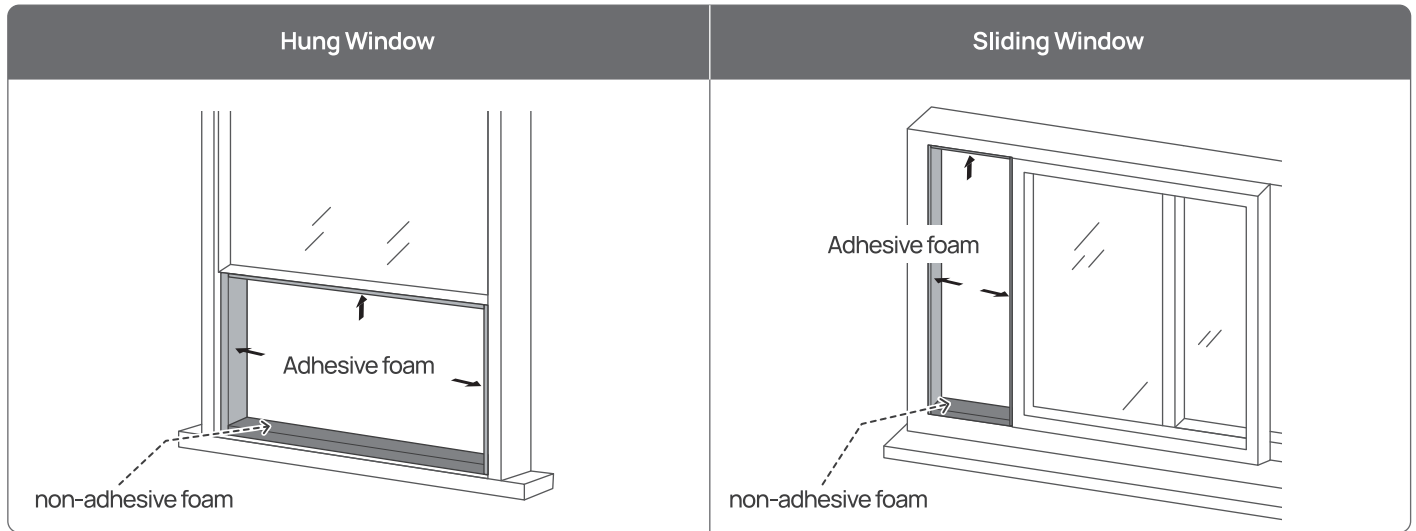
Loosen the butterfly bolt and insert it into the back slot of Panel A.

Align and insert the required extension panel.

Place the washer and tighten the wing nut until secure, leaving some looseness for later adjustment to fit the window.

2. Installing the Adhesive Foam Seals (Included inside the air conditioner hose)

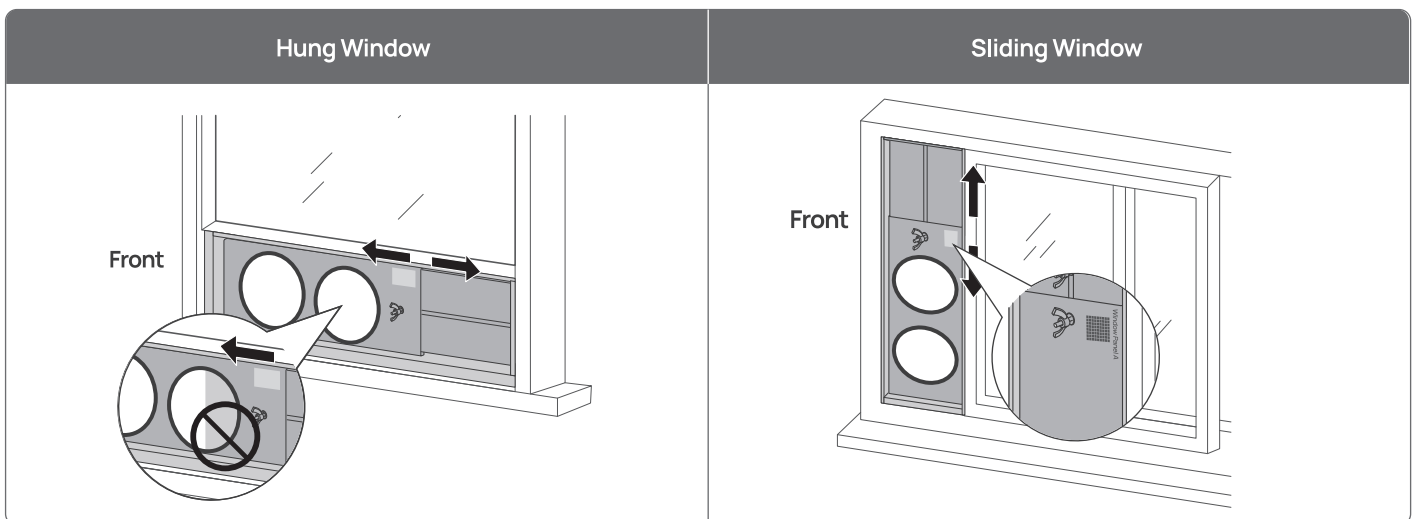
Cut the adhesive foam seals to proper lengths, peel the back side and attach them to the window frame and sash as shown.
Note: It is recommended to use non-adhesive foam for the bottom part of the frame.



3. Installing the window panel

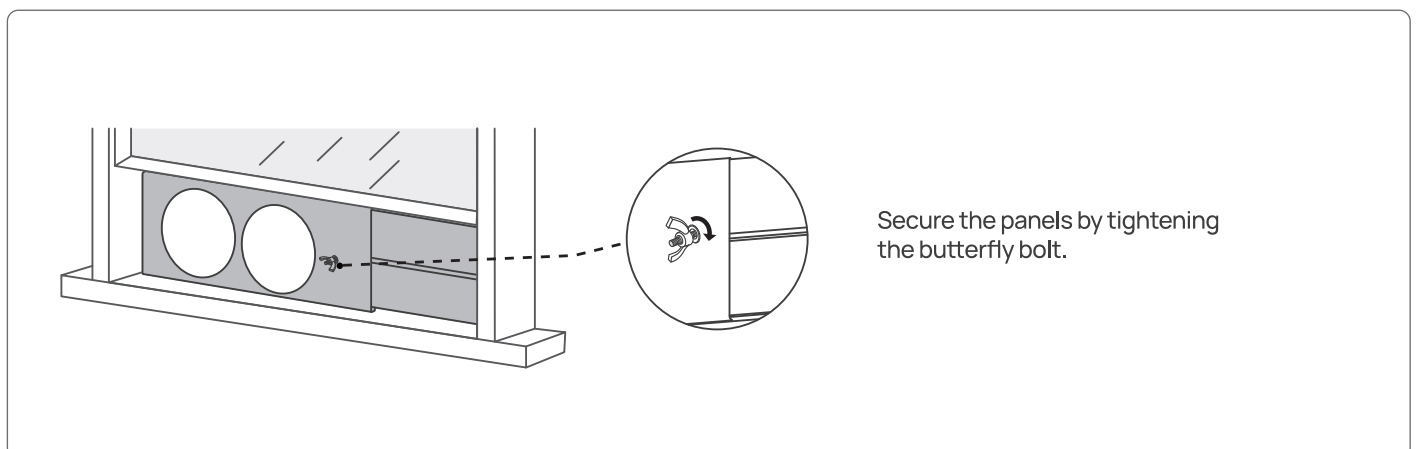
Place the panel on the window and adjust the extension according to the opening length.

Note: Make sure both panels are facing the front. You can add adhesive foam around the panel for a more secure fit into the window.

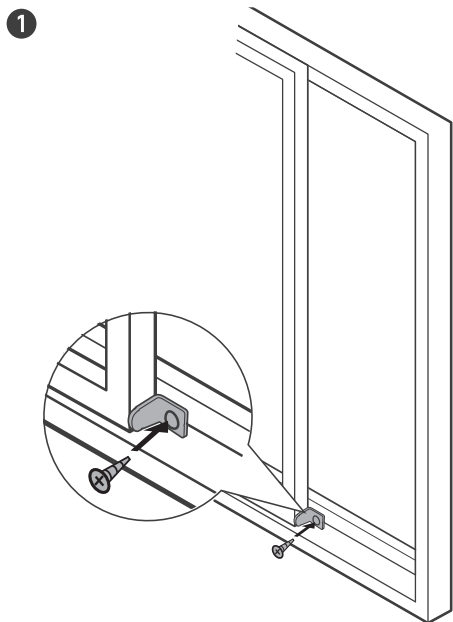


Make sure the window panel hole is not blocked by the window, you can add non-adhesive foam to adjust its position.

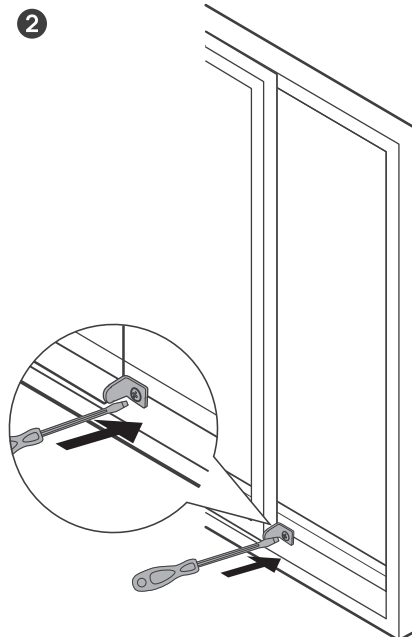
4. Securing the extension panel



5. Installing the Locking Plate (Optional)



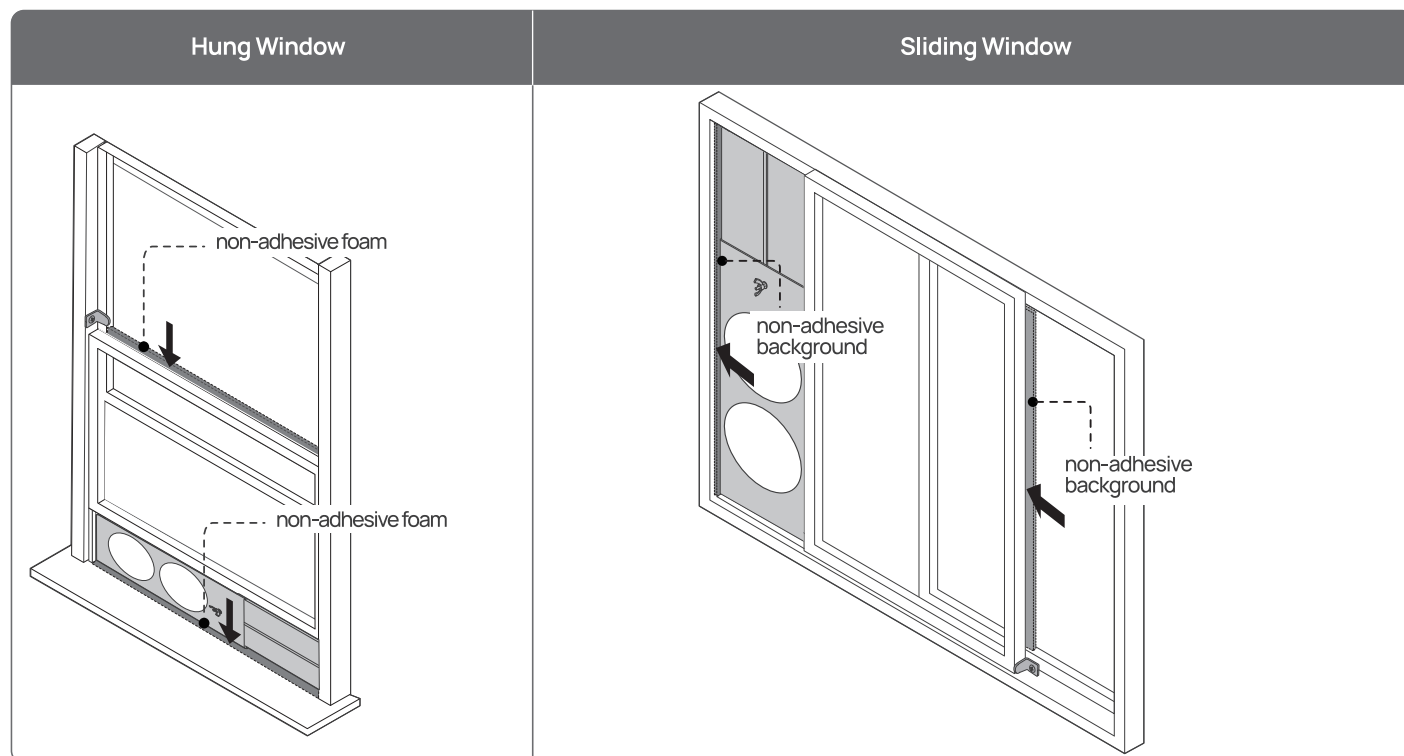
Make sure the window is fully closed. Place the locking plate on the window frame as shown in the picture.



Drill holes and fasten the screws to secure the locking plate. Confirm that the window is firmly secured.

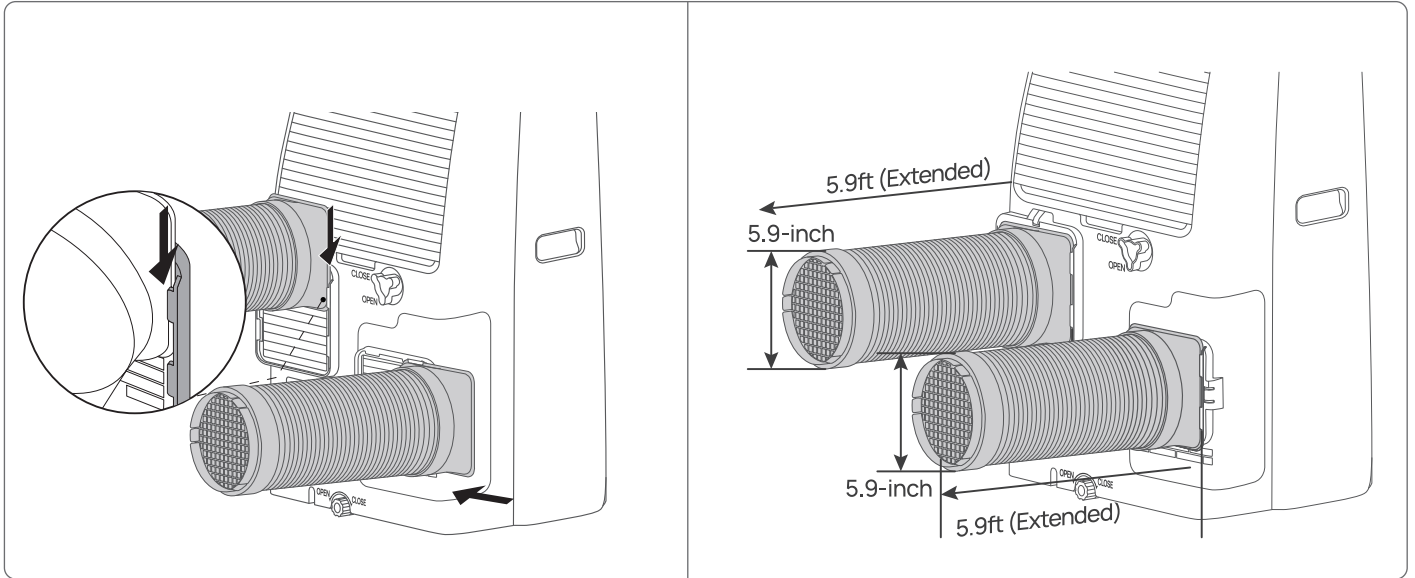
6. Sealing the Window Gaps

Cut a non-adhesive foam seal to the proper size and insert it into all visible gaps between the frame and sash to prevent air and insects from entering the room.

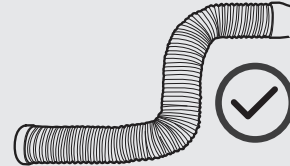
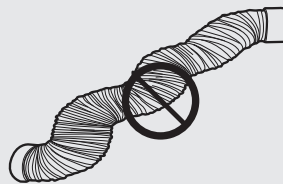


7. Attaching the Hose to the Air Conditioner

Align the hose inlet with the slots over the air exhaust housing outlet to assemble.

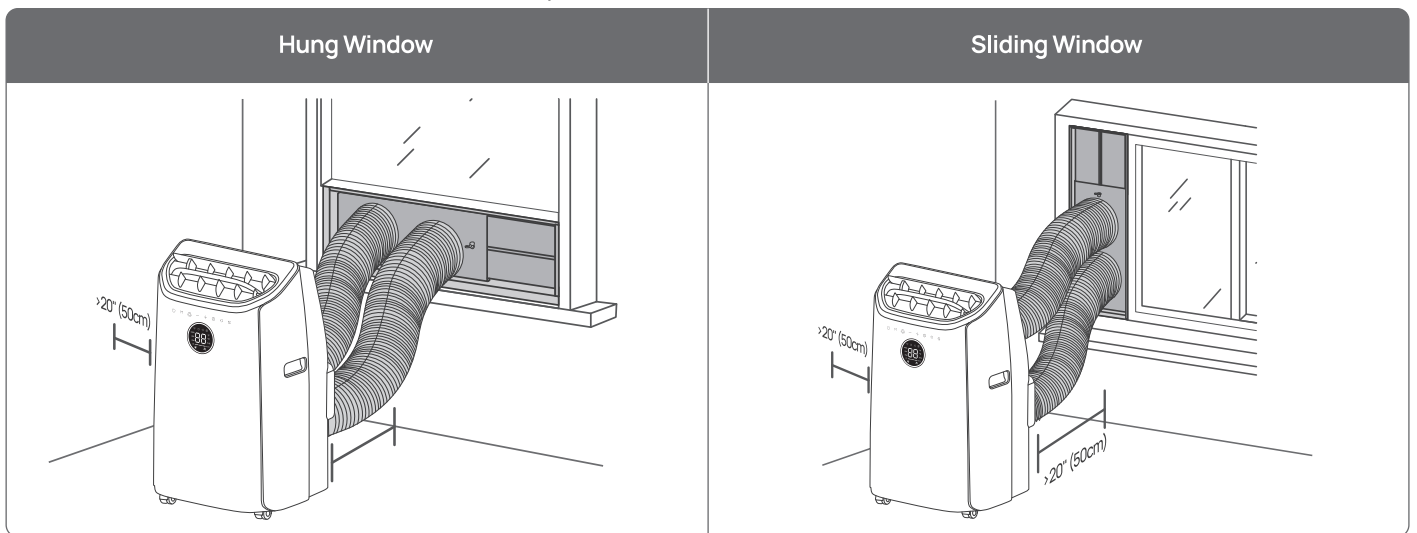


To ensure optimum performance, **DO NOT** overextend or twist the hose. Place the air conditioner at least 20" away from windows. Do not cover or place objects against the air conditioner.



8. Attaching the Hose to the Window

Attach the vent hose to the cutout on the window panel.



CONNECTING TO YOUR APPLIANCE

03



Before connecting the appliance to your mobile device, please scan the QR code on the left or go to the app store and search "DREO", then select and download the app.



Look for "Portable Air Conditioner 740S" when connecting your new appliance.



You can use the DREO app to connect your appliance to **Amazon Alexa** or **Google Home**. Please follow the in-app instructions to set up your voice assistant.

NOTE: You must create a DREO account to access voice assistants.



Launch DREO and sign in or create account by following in-app instructions.



1

Enable Bluetooth on your mobile device and plug in your appliance.



2



Hold  for 5 seconds to start WiFi connection settings.
(Tip: The WiFi icon  will keep flashing when pairing.)

3

Tap +Add Device and select **Portable Air Conditioner 740S**.




4



Follow in-app instructions to complete WiFi connection.

5

You're now ready to control the appliance on your app.
(Tip: To restart connection settings, hold  again for 5 seconds)



6

Long press the power button  for 5 seconds to unpair WiFi and restore factory settings.

Control Panel



Power Button

- Turn on/off the appliance.
- Long press for 5 seconds to restore to factory settings.
- When shutting down, there is a 20-second countdown to dry the residual water on the evaporator.



Mode Button

- Switch between Cool, Fan Only, and Dry (dehumidify) modes.



Timer Button

- Select to set a timer (0-12h).
- Long press for 5 seconds to start network settings and device pairing.



Settings Adjustment Buttons

- Select to increase or decrease temp/timer.
- Press ⊖ and ⊕ simultaneously for 3 seconds to switch between Fahrenheit and Celsius.



Fan Speed Button

- Adjust airflow speed between low, mid, high and auto.

LOW  —
MID  — —
HIGH  — — —
AUTO  — — — — AUTO

- The speed indicator changes according to the actual fan speed.
- Long press for 5 seconds to reset the filter life indicator. The filter indicator light will turn off briefly.



Swing Louver Button

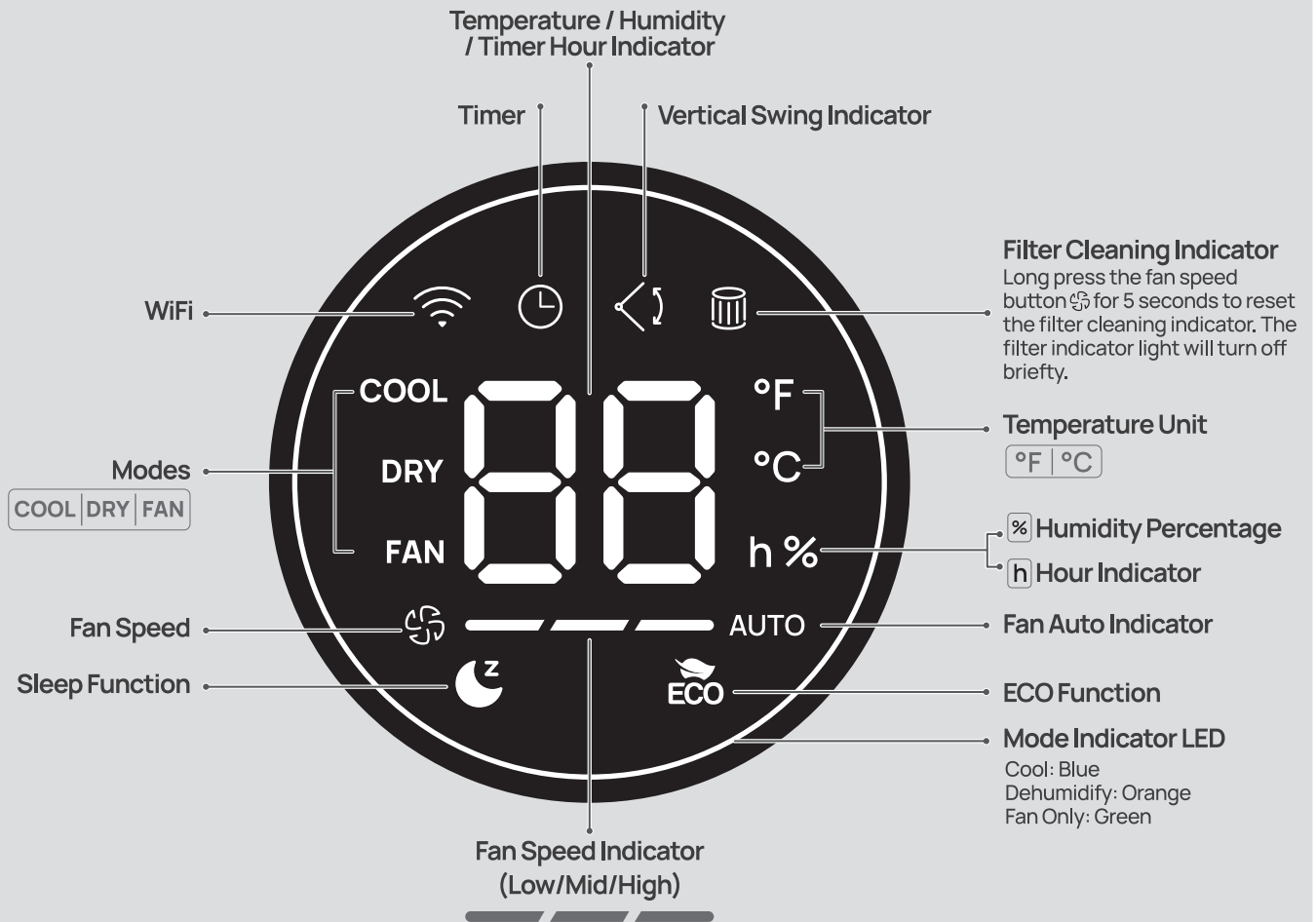
- Sets the air discharge louvers to oscillate up and down.
- Long press for 5 seconds to activate/deactivate the Child Lock function (Display will show "⏏" when activated).



Sleep Function Button (Only available in Cool Mode)

- Turns Sleep Function on/off.
- Long press for 5 seconds to turn on/off the ECO Function.
- Sleep Function automatically turns off after 8 hours.
- All beep sounds, and the LED display are turned off. You can wake up the screen by touching any button.
- In Sleep function, target temperature increases in stages (2°F for every hour, up to 86°F) to compensate body temperature loss during sleep.

LED Display



Working Modes

Cool Mode (61°F to 86°F)

- Fast cooling with customizable temperature and fan speed.
- You can select your target room temperature by touching \oplus or \ominus .
- The fan speed can be customized by touching ⏏ and choosing between: Low/Mid/High/Auto.
- Long press ⏏ and ⏏ for 5 seconds to enable Power Cooling (max fan speed, 16°C temperature setting).

Fan Only

- The air conditioner blows air into the room.
- Choose between four different fan settings (Low, Mid, High, Auto).
- Temperature cannot be adjusted in Fan Mode.

Dry (RH 30% - 80%)

- Reduces room relative humidity.
- Default humidity set to 60%.
- You can set target humidity from 30% to 80% (5% increments).
- Keep windows and doors closed for the best dehumidifying effect.
- Fan speed changes automatically and cannot be adjusted.
- In Dry Mode, please remove the cover and attach a drain hose to the main drain outlet, and place a bucket at the other end for water drainage.

ECO (61°F to 86°F)

- ECO function is only effective in Cool Mode.
- Press the Sleep Function Button for 5 s to activate/deactivate the ECO function.
- Set target temperature from 61°F to 86°F by touching \oplus or \ominus .
- Choose from different power levels through the DREO app.

Sleep

- Sleep function is only available when using Cool Mode.
- Target temperature increases in stages (2°F for every hour, up to 86°F) to compensate body temperature lost during sleep.
- You can customize the temperature increase of every stage in the DREO app.
- You can select your target room temperature by touching \oplus or \ominus .
- All beep sounds, LED display are turned off. You can wake up the screen by touching any button.

Additional Features



Timer

When the appliance is ON/OFF, touch the timer button repeatedly to set a timer (0-12h). When the timer ends, the appliance will stop/start running automatically. To cancel, set the time to 0 hour.



Memory

If the appliance is turned OFF or disconnected from power, it will operate under the previous settings (except the Timer setting) when it is turned ON again.



Firmware Update

Check the firmware version on the DREO app and update regularly for the appliance to work more efficiently.
 ⚠️ Display will show "UP" during the update process. Do not operate until the update is completed.



Child Lock

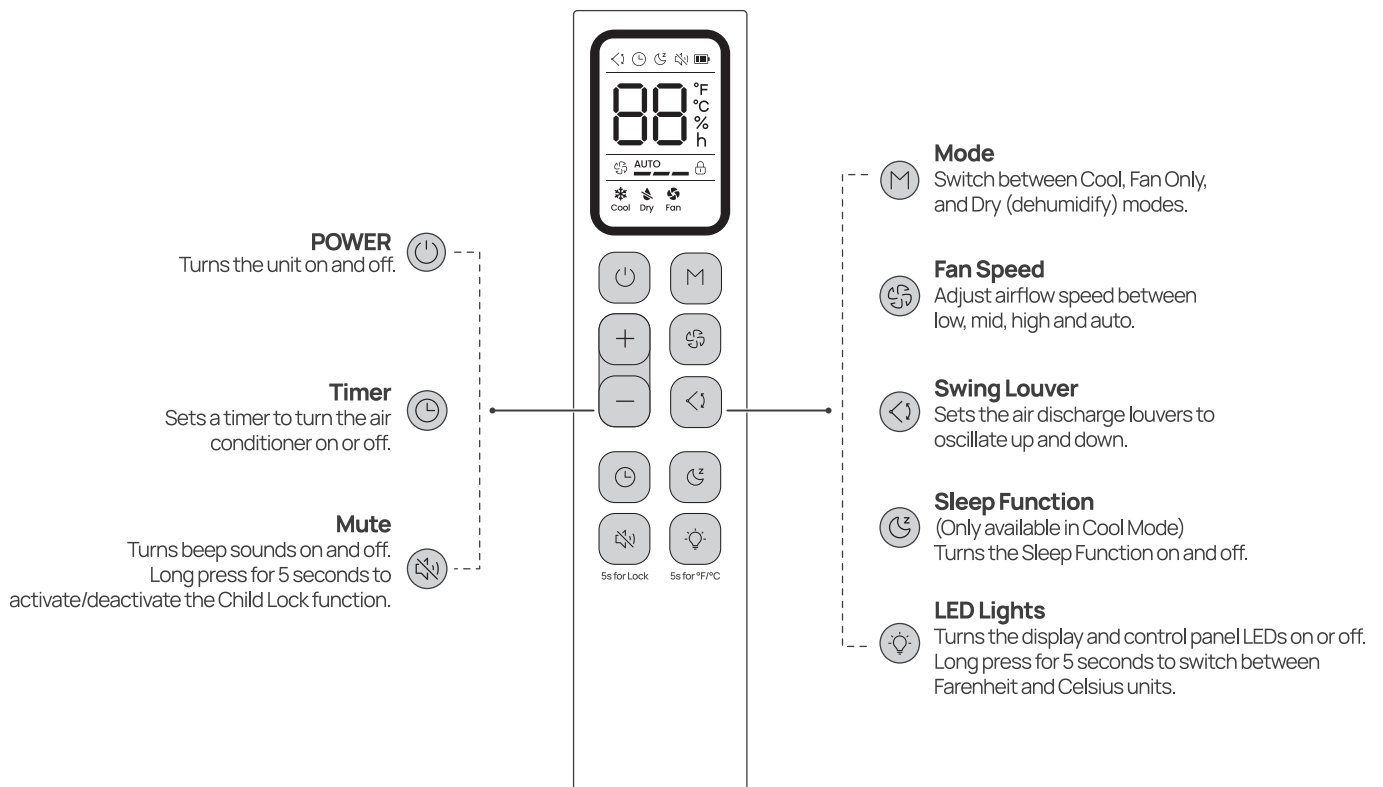
Long press <1> for 5 seconds to activate / deactivate the Child Lock function. When activated, the display will show "L", and all the buttons on the appliance will be locked.

°F °C

Temperature Unit Switch

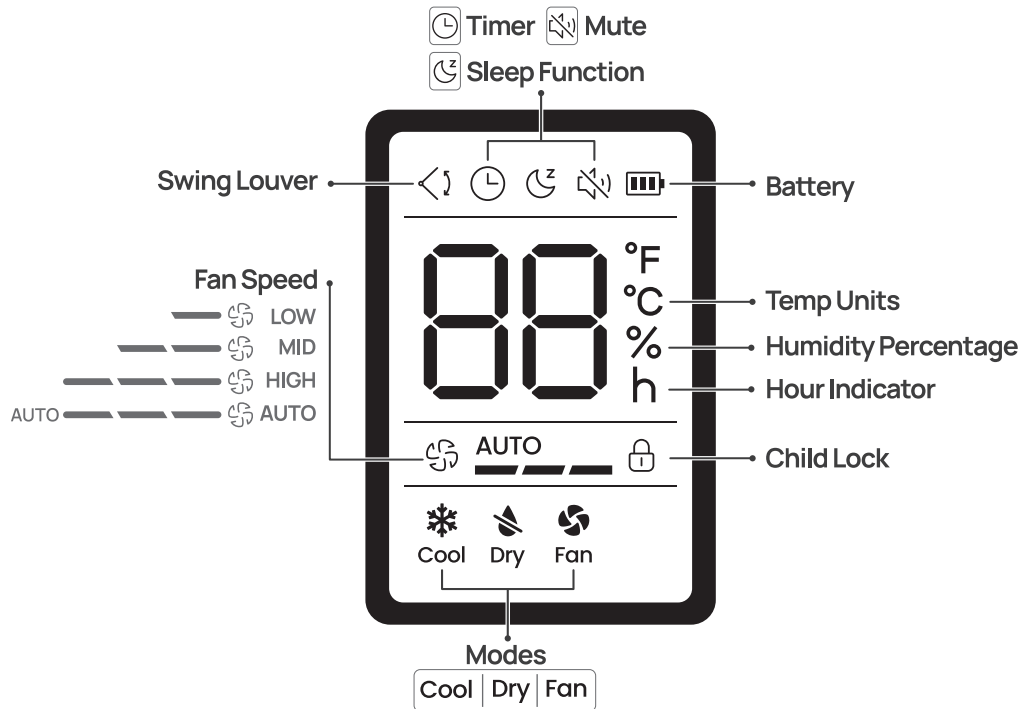
Long press (+) and (-) to switch the temperature units displayed in your air conditioner

Remote Control



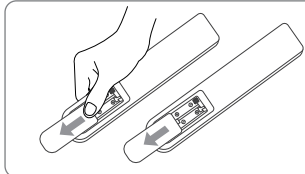
NOTE:
 Use the remote control within 26 ft. from the unit, ideally in less than 45° angle.
 The remote control has no RF circuit.

Indicators



Battery Replacement

Your air conditioner may come with two batteries (2 x AAA, 1.5V). Put the batteries in the remote control before use.



1. Slide the back from the remote control downward, exposing the battery compartment.
2. Insert the batteries, paying attention to match up the (+) and (-) ends of the batteries with the symbols inside the battery compartment.
3. Slide the battery cover back into place.

- a) Remove and immediately recycle or dispose of used batteries according to local regulations and keep away from children. Do NOT dispose of batteries in household trash or incinerate.
- b) Even used batteries may cause severe injury or death.
- c) Call a local poison control center for treatment information.
- d) Compatible battery type: AAA.
- e) Battery nominal voltage: 1.5 V
- f) Non-rechargeable batteries are not to be recharged.
- g) Do not force discharge, recharge, disassemble, heat above (rated temperature: 140 °F) or incinerate. Doing so may result in injury due to venting, leakage or explosion resulting in chemical burns.
- h) Ensure the batteries are installed correctly according to polarity (+ and -).
- i) Do not mix old and new batteries, different brands or types of batteries, such as alkaline, carbon-zinc, or rechargeable batteries.
- j) Remove and immediately recycle or dispose of batteries from equipment not used for an extended period of time according to local regulations.
- k) Always completely secure the battery compartment. If the battery compartment does not close securely, stop using the product, remove the batteries, and keep them away from children.

⚠ CAUTION

Airflow Direction Adjustment

The louver can be adjusted automatically. Adjust the airflow direction automatically;

- When the power is ON, the louver opens fully.

- Press the Swing Louver button on the panel or remote controller to initiate the Auto swing feature. The louver will swing up and down automatically.

Please do not adjust the louver manually.

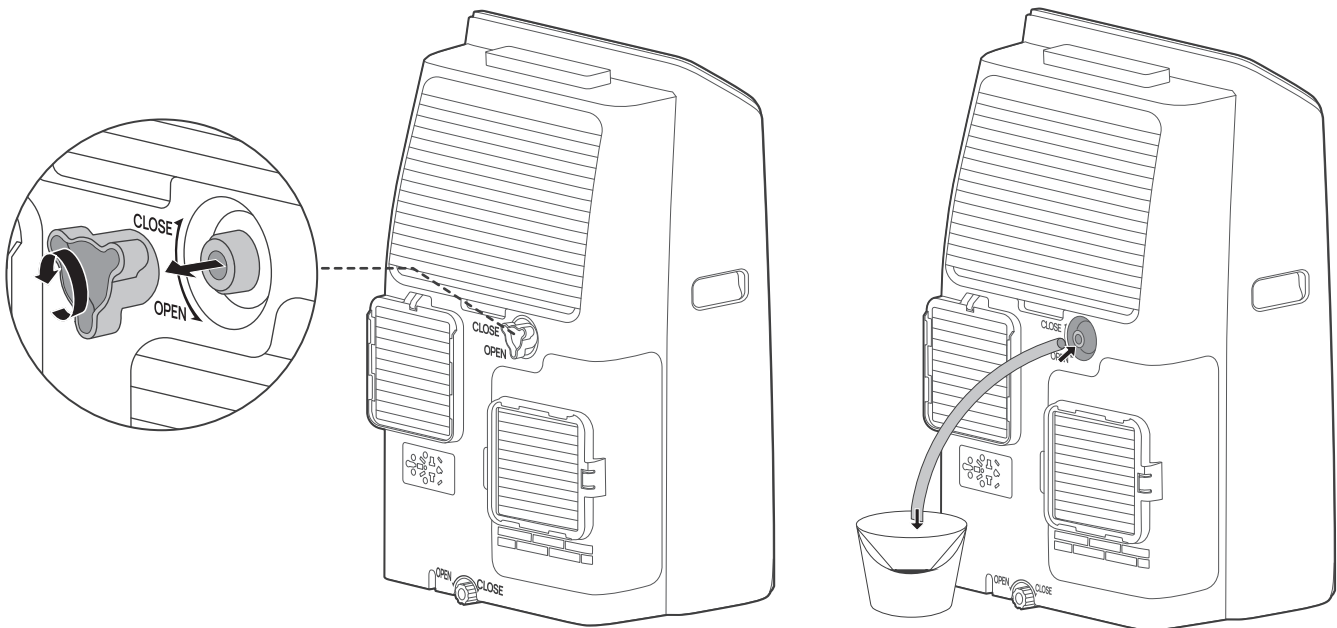
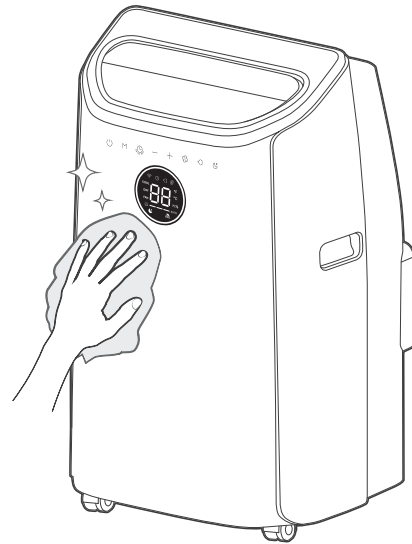


WARNING

- Always turn off and unplug the appliance before cleaning or servicing.
- DO NOT use flammable liquids or chemicals to clean the appliance.
- DO NOT wash the appliance under running water. Doing so causes electrical danger.
- DO NOT operate the appliance if the power supply was damaged during cleaning.
- A damaged power cord must be replaced with a new cord from the manufacturer.

Outer Surface

Clean the outer surface using a damp, lint-free cloth and mild detergent. Dry the appliance with a dry, lint-free cloth.

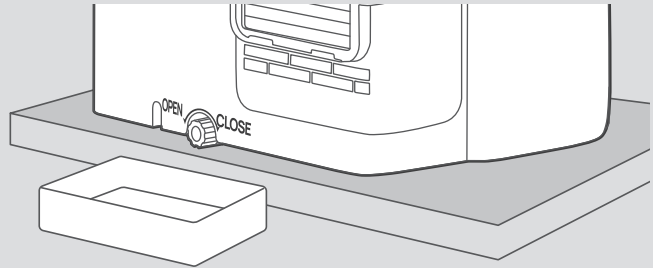


Water Drainage

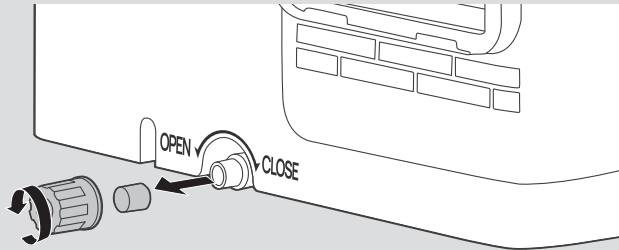
Your air conditioner has a built-in evaporator so the water compartment would not typically fill unless there is high humidity in the environment.

Intermittent & P1 Drainage

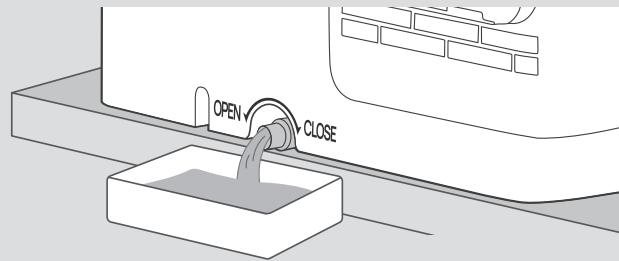
- 1 Unplug the unit and carefully move it to a drain area or use a drip pan (not included). (It is recommended to place the unit on a higher level than the drip pan).



- 2 Remove the bottom drain cap.

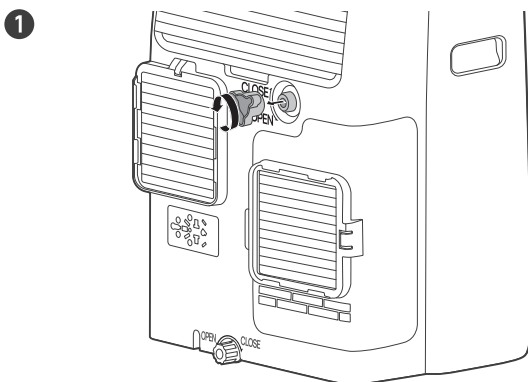


- 3 Let the water drain until the water reservoir is empty, then replace the drain cap. Restart the machine. If the error code repeats, call for service.

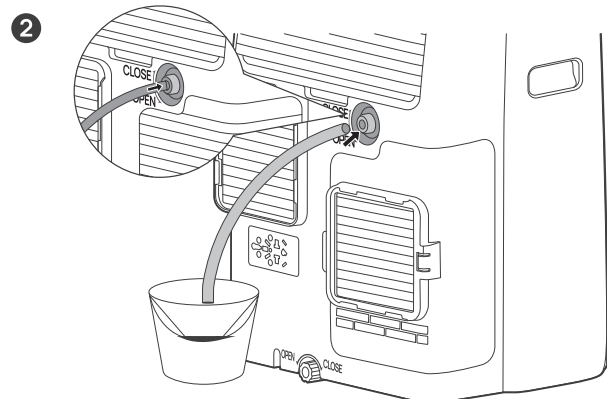


Continuous Drainage

When using Dry mode, you will need a hose to drain the condensed water from the unit. Follow the steps below:



Unscrew the main drain outlet cap.
Note: Use a drip pan when opening the outlet cap to avoid wetting floors.



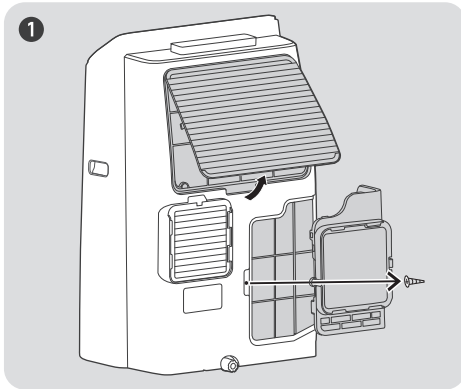
Connect the hose to the main drain outlet then lead the other end into a drain that is lower than the unit.

NOTE

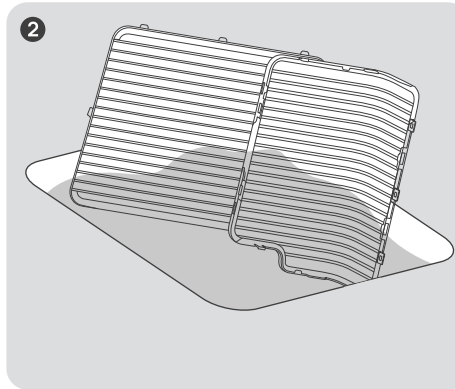
- Condensate may leak out after removing the drain cap, if the unit is running in Cool or ECO function. Make sure to prepare a drip tray (not included) to collect the leakage.
- Make sure that the height of the drain and section of the drain hose should not be higher than that of the drain outlet, or the continuous drainage may not work properly.
- For maximum performance, during Cool or ECO function, it is recommended to disable continuous drainage by replacing the drain cap to the drain outlet.

Air Filter Cleaning

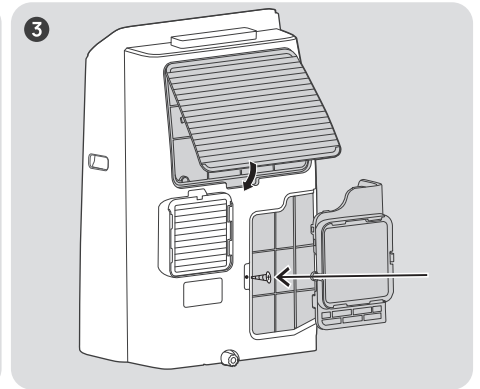
For better performance and less operational noise, clean the appliance filter at least once every two months.



1 Remove both grills from the back of the unit.



2 If there is stubborn dirt or dust, immerse in lukewarm water and rinse a couple of times.

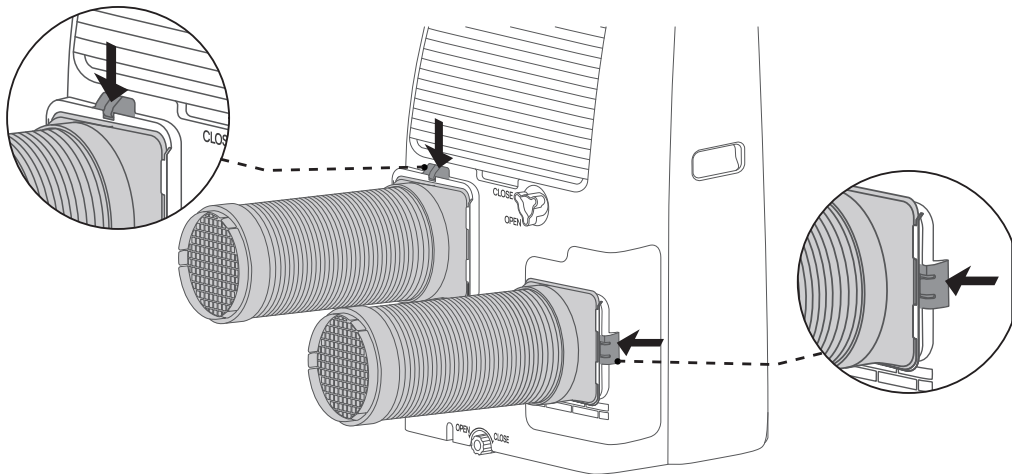


3 Let the filter dry before re-attaching to the main unit.

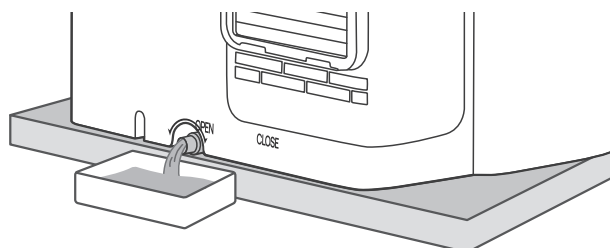
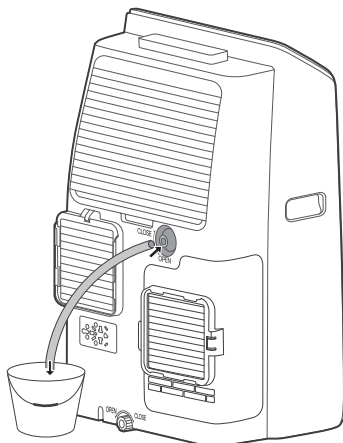
Winter Storage

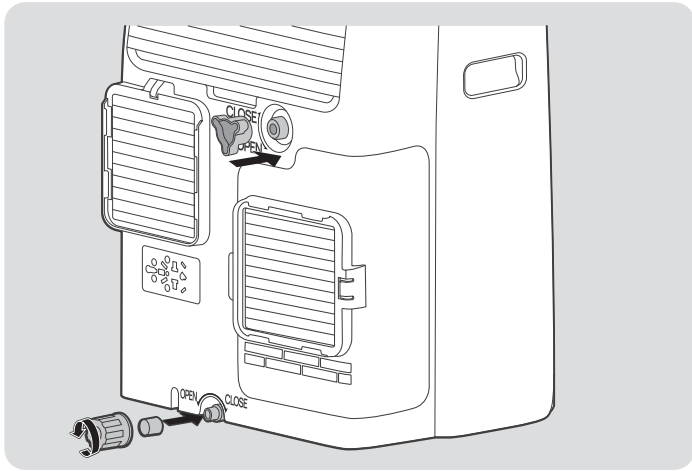
If you are not using the air conditioner for a long period of time:

- Press the latch tab to take out the exhaust hose.

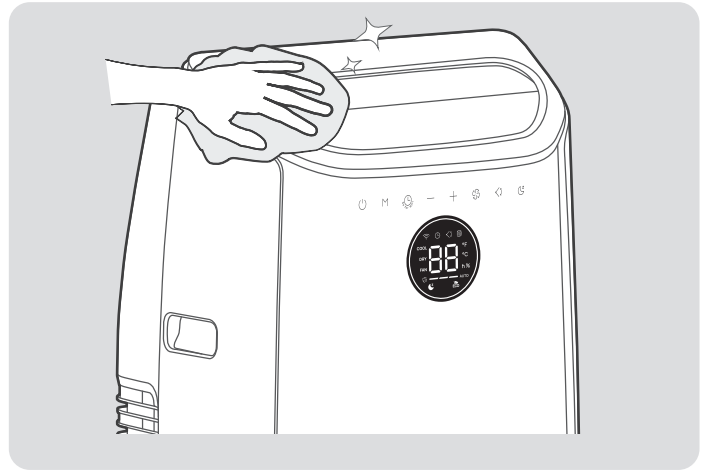


- Drain any remaining water from the tank and leave both drain outlets open for enough time to allow all residual water to drain out.

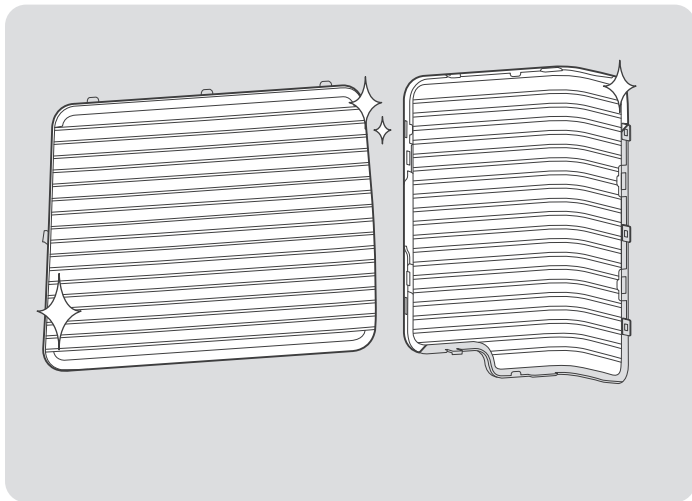




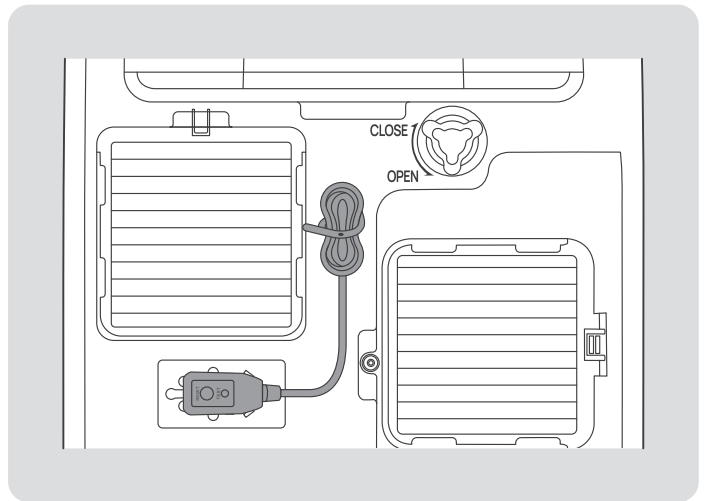
- Once the tank is completely drained close the main and backup drain outlet.



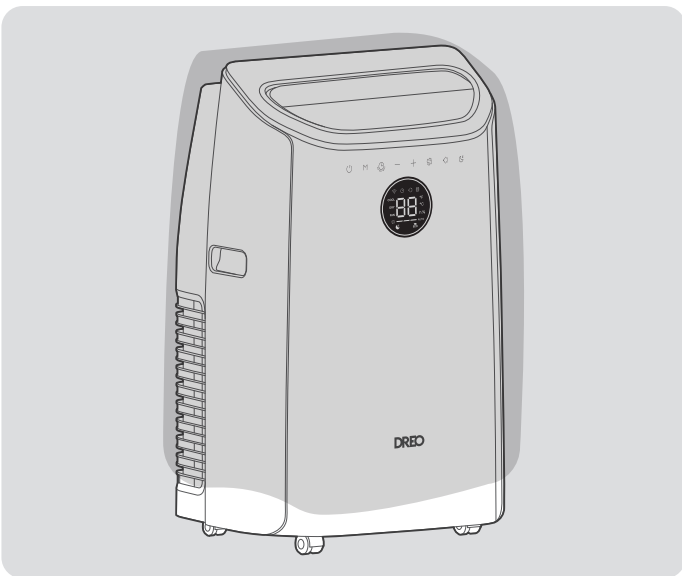
- Clean the louver



- Clean the filter and dry thoroughly before reinstalling.



- Wrap around the cord using the plastic cord strip and plug it to the air conditioner outlet storage.



- Wrap the air conditioner in a plastic bag to prevent dust buildup decreasing its efficiency.

Problem	Possible Cause	Solution
My air conditioner is not working	Unit not plugged correctly.	Make sure the unit is plugged firmly into the outlet.
	Plug Current Device tripped.	Press the RESET button.
	Room temperature is lower than the target temperature (Cool Mode).	Reset the temperature.
	P1 Protection Code	The water collection tray is full. Turn off your air conditioner, drain the water and restart the unit.
	E0/E1/E2 Error Codes	Contact customer service (Page 28).
Unit does not cool well	The air filter is blocked with dust or animal hair.	Turn off the unit and clean the filter according to the instructions (see page 25).
	Exhaust hose is not connected or it is blocked.	Turn off the unit, disconnect the hose, check for blockage and reconnect the hose.
	The windows and doors in the room are open.	Make sure all windows and doors are closed.
	The unit is low on refrigerant.	Contact customer service to inspect the unit and top off refrigerant.
Ice formed on the cooling coil behind the air outlet	Indoor temperature is below 60°F (16°C).	Change to Fan Only mode.
	Air filter may be dirty.	Clean the filter and then set the air conditioner to FAN only mode.
The unit is noisy and vibrates too much	The air conditioner is not placed on a level surface.	Place the unit on a flat, level surface.
	The air filter is blocked with dust or animal hair.	Turn off the unit and clean the filter according to instructions.
The unit makes a gurgling sound	Flow of refrigerants inside the unit.	This is normal.

If your problem is not listed or still persists, please contact our Customer Support (see page 28)

12-MONTH LIMITED WARRANTY

What is Covered

DREO warrants to you that your product will be free from original defects in materials and workmanship for a period of twelve (12) months from the date of your purchase, when you use your product for intended purposes in accordance with this User Manual.

Please retain your proof of purchase. If you do not retain your proof of purchase, your warranty will start two (2) months from the date of manufacture printed on your product label.

What is Not Covered

This limited warranty only applies to the original purchaser of your product and is non-transferable. This warranty is only valid if your product is used in the country in which you originally purchased it. In addition, this warranty will not apply, and DREO will not be liable for any costs, damages, or repairs, in connection with any of the following:

- Accidents or use of your product with inappropriate force;
- Damage or destruction caused by wrong voltage or unstable electric current;
- Normal wear and tear;
- Careless operation or handling, misuse, abuse, neglect, and/or failure to maintain or use your product in accordance with this User Manual;
- Any partially or completely altered, modified and/or dismantled products;
- Reduction in battery discharge time due to battery age or use (as applicable);
- Products with altered or removed serial numbers;
- Clearing any blockages from the product;
- Purchases from retailers and distributors not authorized by DREO to sell this product;
- Defects caused by or resulting from damages from shipping or handling by any third party not authorized by DREO to ship or handle your product; or
- Defects caused by or resulting from repairs, service, improper maintenance, or alteration to your product or any of its components by anyone other than a repair person authorized by DREO.

Any service and customer support that DREO provides to you under this limited warranty will not extend the duration of this limited warranty.

Warranty Limitations and Exclusions

ANY IMPLIED WARRANTIES RELATING TO YOUR PRODUCT, INCLUDING BUT NOT LIMITED TO THE WARRANTY OF MERCHANTABILITY AND THE WARRANTY OF FITNESS FOR A PARTICULAR PURPOSE, ARE LIMITED TO THE DURATION OF THE LIMITED WARRANTY SET FORTH ABOVE AND ARE OTHERWISE DISCLAIMED.

THIS LIMITED WARRANTY SHALL BE THE SOLE REMEDY OF THE PURCHASER OR USER OF THE PRODUCT, AND DREO SHALL NOT BE LIABLE FOR AN ALLEGEDLY DEFECTIVE OR DAMAGED PRODUCT EXCEPT TO REPAIR OR REPLACE IT IN ACCORDANCE WITH THIS LIMITED WARRANTY. DREO WILL NOT BE LIABLE FOR SPECIAL, INCIDENTAL, INDIRECT, CONTINGENT, OR CONSEQUENTIAL DAMAGES OR LOSSES OF ANY NATURE THAT YOU MAY INCUR IN CONNECTION WITH YOUR PURCHASE OR USE OF YOUR PRODUCT.

Some jurisdictions do not allow limitations on how long an implied warranty lasts or the exclusion or limitation of incidental or consequential damages, so the above limitations or exclusions may not apply to you. This limited warranty gives you specific legal rights, and you also may have other rights which vary from jurisdiction to jurisdiction.

Limited Remedies

If your product fails because of an original defect in material and/or workmanship during the warranty period, DREO will repair or replace (in DREO's sole discretion) your product.

To obtain warranty service on your product, contact us at support@dreo.com or at (888) 290-1688 (available from Monday - Friday, 9:00 AM - 5:00 PM PST/PDT) for further instructions.

IN THE EVENT OF AN ORIGINAL DEFECT IN MATERIAL AND/OR WORKMANSHIP, TO THE EXTENT PERMITTED BY LAW, THE REMEDIES SET FORTH IMMEDIATELY ABOVE ARE YOUR SOLE AND EXCLUSIVE REMEDIES.

FCC Statement

This device complies with Part 15 of the FCC Rules. Operation is subject to the following two conditions: (1) this device may not cause harmful interference, and (2) this device must accept any interference received, including interference that may cause undesired operation.

Any changes or modifications not expressly approved by the party responsible for compliance could void the user's authority to operate the equipment.

NOTE: This equipment has been tested and found to comply with the limits for a Class B digital device, pursuant to Part 15 of the FCC Rules. These limits are designed to provide reasonable protection against harmful interference in a residential installation. This equipment generates, uses and can radiate radio frequency energy and, if not installed and used in accordance with the instructions, may cause harmful interference to radio communications. However, there is no guarantee that interference will not occur in a particular installation.

If this equipment does cause harmful interference to radio or television reception, which can be determined by turning the equipment off and on, the user is encouraged to try to correct the interference by one or more of the following measures:

- Reorient or relocate the receiving antenna.
- Increase the separation between the equipment and receiver.
- Connect the equipment into an outlet on a circuit different from that to which the receiver is connected.
- Consult the dealer or an experienced radio/TV technician for help.

This equipment complies with FCC radiation exposure limits set forth for an uncontrolled environment. This equipment should be installed and operated with a minimum distance of 20cm between the radiator & your body. This transmitter must not be co-located or operating in conjunction with any other antenna or transmitter.

Model No.: DR-HAC010S
Rev_EN_1.1

We're Here to Help!



(888) 290-1688 Mon - Fri, 9:00 am-5:00 pm PST/PDT



support@dreo.com



www.dreo.com



DREO PTE. LTD.



112 ROBINSON ROAD, #03-01, ROBINSON 112, SINGAPORE 068902

www.dreo.com

Looking for help?

Contact us to get expert support.

 support@dreo.com

 [\(888\) 290-1688](tel:(888)290-1688)

 www.dreo.com

Mon - Fri, 9:00 am-5:00 pm PST/PDT