

4. Can I use group control with voice assistance?

- Please make sure your device is connected to Wi-Fi before using voice assistance.
- Please set voice group control in Alexa/Google Assistant App.

5. What is the maximum number of devices I can connect via Bluetooth?

- Typically, up to 6 devices can be connected devices may vary based on your smartphone brand.

6. How many downlights can be connected to one phone?

- Up to 50 downlights can be connected to one phone if the network is normal.

Customer Service

Warranty: 12-Month Limited Warranty

Support: Lifetime Technical Support

Email: support@govee.com

Official Website: www.govee.com

@GOVEE @goveeofficial @govee.official

@GoveeOfficial @GOVEE

FCC and ISED Canada Statement Déclaration de la FCC et d'ISED Canada

This device complies with Part 15 of the FCC Rules and Innovation, Science and Economic Development Canada licence-exempt RSS standard(s). Operation is subject to the following two conditions:

(1) This device may not cause harmful interference, and (2) This device must accept any interference received, including interference that may cause undesired operation.

Warning: Changes or modifications not expressly approved by the party responsible for compliance could void the user's authority to operate the equipment.

Le présent appareil est conforme aux CNR d'Innovation, Sciences et Développement économique Canada applicables aux appareils radio exempts de licence. L'exploitation est autorisée aux deux conditions suivantes :

(1) l'appareil ne doit pas produire de brouillage, et (2) l'utilisateur de l'appareil doit accepter tout brouillage radioélectrique subi, même si le brouillage est susceptible d'en compromettre le fonctionnement."

Avertissement: Tout changement ou modification n'ayant pas été expressément approuvé(e) par la partie responsable de la conformité pourrait annuler l'autorité de l'utilisateur à utiliser l'appareil.

NOTE: This equipment has been tested and found to comply with the limits for a Class B digital device, pursuant to Part 15 of the FCC Rules.

REMARQUE : cet équipement a été testé et déclaré conforme aux limites imposées aux appareils numériques de classe B, en vertu de la partie 15 des règles de la FCC.

These limits are designed to provide reasonable protection against harmful interference in a residential installation. This

equipment generates uses and can radiate radio frequency energy and, if not installed and used in accordance with the instructions, may cause harmful interference to radio communications. However, there is no guarantee that interference will not occur in a particular installation. If this equipment does cause harmful interference to radio or television reception, which can be determined by turning the equipment off and on, the user is encouraged to try to correct the interference by one or more of the following measures:

1. Reorient or relocate the receiving antenna.
2. Increase the separation between the equipment and receiver.
3. Connect the equipment into an outlet on a circuit different from that to which the receiver is connected.
4. Consult the dealer or an experienced radio/TV technician for help.

WCes limites sont conçues pour assurer une protection suffisante contre les interférences nuisibles dans les installations résidentielles.

Cet équipement génère, utilise et peut dégager de l'énergie de radiofréquence et, s'il n'est pas installé et utilisé conformément aux instructions du fabricant, provoquer des interférences préjudiciables aux communications radio. Il n'existe toutefois aucune garantie qu'un équipement particulier ne souffrira pas d'interférences. Si cet équipement entraîne des interférences préjudiciables à la réception des émissions radio ou de télévision, identifiables en mettant l'appareil hors tension, puis sous tension, il est recommandé que l'utilisateur tente de résoudre ce problème au moyen d'une ou plusieurs des mesures suivantes :

1. en réorientant l'antenne réceptrice ou en la changeant de place ;
2. en augmentant la distance séparant l'équipement du récepteur ;
3. en connectant l'équipement à une prise sur un circuit différent de celui sur lequel le récepteur est branché ;
4. en obtenant de l'aide auprès du revendeur ou d'un technicien radio/TV expérimenté.

This Class B digital apparatus complies with Canadian ICES-005. Cet appareil numérique de la classe B est conforme à la norme NMB-005 du Canada.

FCC and IC Radiation Exposure Statement Déclaration de la FCC et de l'IC sur l'exposition aux radiations

This equipment complies with FCC and IC radiation exposure limits set forth for an uncontrolled environment.

Cet équipement est conforme aux limites d'exposition aux rayonnements de la FCC et de l'IC définies pour un environnement non contrôlé.

This equipment should be installed and operated with minimum distance 20cm between the radiator & your body.

Lors de l'utilisation du produit, maintenez une distance de 20 cm du corps afin de vous conformer aux exigences en matière d'exposition RF.

Responsible party (this contact information is only for FCC matters) :

Name: GOVEE MOMENTS(US) TRADING LIMITED
Address: 2501 Chatham Rd Suite R Springfield IL 62704
Email: certification@govee.com
Contact information: https://www.govee.com/support

Partie responsable (ces coordonnées concernent uniquement les questions liées à la FCC) :

Nom : GOVEE MOMENTS(US) TRADING LIMITED
Address: 2501 Chatham Rd Suite R Springfield IL 62704
E-mail : certification@govee.com
Contact : https://www.govee.com/support

The Bluetooth® word mark and logos are registered trademarks owned by Bluetooth SIG, Inc. and any use of such marks by Shenzhen Intellirocks Tech. Co.,Ltd. is under license.

La marque et les logos Bluetooth® sont des marques déposées appartenant à Bluetooth SIG, Inc., et toute utilisation de ces marques par Shenzhen Intellirocks Tech. Co., Ltd. est sous licence.

The trademark Govee have been authorised to Shenzhen Intellirocks Tech. Co.,Ltd.
Copyright ©2021 Shenzhen Intellirocks Tech. Co.,Ltd.
All Rights Reserved.

La marque Govee a été autorisée à Shenzhen Intellirocks Tech. Co., Ltd.
Copyright ©2021 Shenzhen Intellirocks Tech. Co., Ltd.
Tous droits réservés.

THIS PRODUCT MUST BE INSTALLED IN ACCORDANCE WITH THE APPLICABLE INSTALLATION

CODE BY A PERSON FAMILIAR WITH THE CONSTRUCTION AND OPERATION OF THE PRODUCT

AND THE HAZARDS INVOLVED

CE PRODUIT DOIT ÊTRE INSTALLÉ SELON LE CODE

D'INSTALLATION PERTINENT, PAR UNE PERSONNE QUI CONNAÎT BIEN LE PRODUIT ET SON

FONCTIONNEMENT AINSI QUE LES RISQUES INHÉRENTS

CONSULT A QUALIFIED ELECTRICIAN TO ENSURE CORRECT BRANCH CIRCUIT CONDUCTOR

CONSULTER UN ÉLECTRICIEN QUALIFIÉ POUR VOUS ASSURER QUE LES CONDUCTEURS DE LA

DÉRIVATION SONT ADÉQUATS



User Manual

Model: H601F

Govee Recessed Downlight 2



For FAQs and more information,
please visit: www.govee.com

Safety Instructions

IMPORTANT SAFETY INSTRUCTIONS

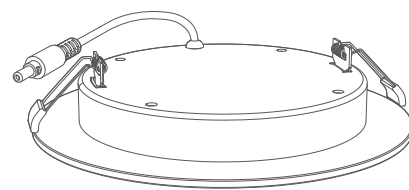
When using products, basic precautions should always be practiced including the following:

READ AND FOLLOW ALL SAFETY INSTRUCTIONS.

- The downlight is not waterproof. Avoid exposing it to splashes or water drops
- The downlight internal light source is unfixable. If it breaks, the entire downlight must be replaced.
- Do not allow children to install the downlight.
- External dimmers cannot be used with this product.
- Installation and maintenance should be operated by a professional.
- Avoid installing the downlight near heat sources or in damp locations.
- Avoid installing the downlight near potentially dangerous sources (e.g., candles, liquid-filled objects).
- CAUTION-The product is not a toy. Children and the disabled should use it under adult supervision.

SAVE THESE INSTRUCTIONS

At a Glance



Thanks for choosing Govee Recessed Downlight 2. This product can be quickly connected to your smartphone in just a few steps. You can change its color, set timers, and DIY your own lighting scenes.

Specifications

Working Voltage	AC 120V
Power	13W
Lumen	1100lm
Color Temperature	2700K
Main light	RGBWW
Back light	RGBIC

Installing Your Device

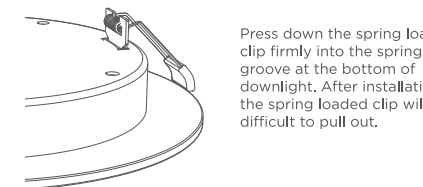
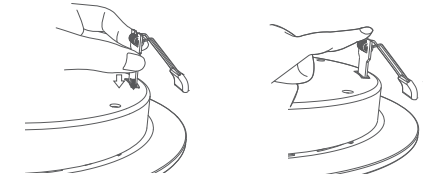
per Pack:



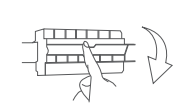
Downlight x1 Hardwire box x1 Wire terminals x3 Spring loaded clips x2



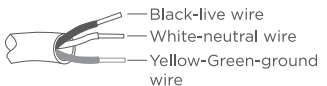
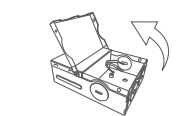
Saw, Slotted screwdriver (Not included)



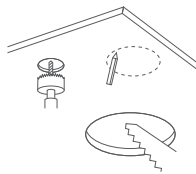
Press down the spring loaded clip firmly into the spring groove at the bottom of downlight. After installation, the spring loaded clip will be difficult to pull out.



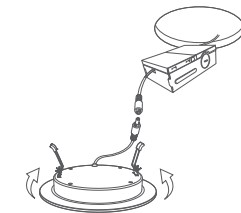
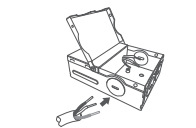
Unplug the device from power before installation.



Open the hardwire box swing cover. Push open the round hole on the side by a tool. Using wire terminals, connect green ground wire of cable to green ground wire of box, so are the white wire and the black wire.



Place the template and trace it with a pen, then cut the hole in the ceiling.



Connect the fixture to the hardwire box and Insert it through the mounting hole. Push spring loaded clips on the fixture upwards and insert fixture base in to the mounting hole, then release the clips.

Notice:

- a. Make sure the distance between the devices and the router is less than 100ft.
- b. Keep as few obstructions (e.g. wall, windows) as possible between the devices and the router.

Pairing Your Downlight with Govee Home App

What You Need:

- A Wi-Fi router supporting the 2.4GHz and 802.11 b/g/n bands. 5GHz is not supported.
- A smartphone or tablet running iOS 8.0 (or above) or Android 4.3 (or above).



1. Download the Govee Home App from the App Store (iOS devices) or Google Play (Android devices).
2. Turn on the Bluetooth in your smartphone.
3. Open the app, tap "+" icon in the top right corner and search "H601F"
4. Tap the device icon and follow the on-screen instructions to complete pairing.

Controlling the Downlight with Your Voice

1. Open the Govee Home App, then tap the device icon to enter the details page.
2. Tap the "setting" icon in the top right corner.
3. Select "Using Guidance" and follow the on-screen instructions to begin using voice control.

Night Light Mode

1. Turn the light off and quickly turn it on again (within 2 seconds) to enter the Night Light Mode.
2. In Night Light Mode, the main light will be turned off by default, and the backlight will be a warm yellow. Other parameters can be set on Govee Home App.

Matter Guide

Cautions:

1. You will need to complete the network connection of apps that support Matter (e.g. Google Home/Apple HomeKit, etc.) within 15 minutes after the product is powered on when using Matter for the first time.
2. An IPv6 network is required.
3. Changing the network may cause Matter to malfunction.
4. If the product cannot connect to the app, first restore the product to factory settings by switching on and off for 5 times. After restoring, try connecting again.

Step 1

Find the Matter QR code or device number on the product or on the "Device Settings" page in Govee Home App.

Step 2

Turn on Bluetooth on your smartphone.

Step 3

Download and open an app that supports Matter like Google Home, Apple HomeKit, etc.

Step 4

Use the device number or QR code located on the product or in the app to complete the network connection for the product for Matter.

Troubleshooting

1. Cannot connect the downlight to Govee Home.

- Check whether the downlight is powered on.
- Check whether your smartphone Wi-Fi is enabled. Please make sure Wi-Fi connected to your phone is 2.4GHz (5GHz band is not supported).
- Make sure your smartphone is close to the device when connecting for the first time.
- Check if you have entered the correct Wi-Fi password during Wi-Fi setup.
- Make sure the distance between the bulb and router is less than 50 ft.
- Check whether the home network is stable by connecting downlight to another phone's hotspot.

2. The downlight lost connection.

- Check whether the device is powered on.
- Check whether your home network is stable.
- Check if there are too many devices connected to the router by connecting downlight to another phone's hotspot.
- Ensure the distance between the smartphone and the device does not exceed 50ft.
- Delete downlight connected in "My Devices" and reconnect the downlight to Wi-Fi following on screen instructions.

3. Can I group multiple Govee devices together?

- Yes, you can group multiple downlights and other Govee devices by Schemes. Same model, General (Wi-Fi or Bluetooth devices). It depends on the function of different devices.

