

# Instruction Manual



60cm Freestanding  
Dishwasher

Model/s:  
DW6CS  
DW6CW

**TEKA**  
TECHNIK & KÜCHE

## Welcome

Congratulations on purchasing your new dishwasher! The Teka brand is proudly distributed within Australia by Residentia Group Pty Ltd.

Please refer to the warranty card at the rear of this manual for information regarding your product's parts and labour warranty, or visit us online at [www.residentia.group](http://www.residentia.group)

At Residentia Group, we are customer obsessed and our Support Team are there to ensure you get the most out of your appliance. Should you want to learn more about your dishwasher features, and importantly taking care of your appliance when cleaning, our Support Team are here to help.

You can use our online Support Centre at anytime by visiting <http://support.residentiagroup.com.au> Alternatively, you can contact us via calling our support team on: 1300 11 HELP (4357).

### Residentia Group

–  
Head Office.  
165 Barkly Ave  
Burnley  
Victoria 3121  
Australia

–  
ACN.  
600 546 656

–  
Online.  
[residentia.group](http://residentia.group)

### Teka

–  
[teka.com/en-au/](http://teka.com/en-au/)  
f @teka.au  
i @teka.au

It is important that you read through the following use and care manual thoroughly to familiarise yourself with the installation and operation requirements of your appliance to ensure optimum performance.

Again, thank you for choosing a Teka appliance and we look forward to being of service to you.

Kind regards,  
The Residentia Group

## Contents

Welcome	02
Safety Notes	04
Your Appliance	07
Operating Instructions	08
Installation Instructions	13
Cleaning and Maintenance	14
Troubleshooting	16
Warranty	18

## Safety Notes

### 1. Conditions of use

This appliance is intended to be used in household and similar applications such as farm houses or by clients in serviced apartments, holiday apartments and other residential type environments.

### 2. Safety instructions

Before the installation and use of the appliance, carefully read the supplied instructions. The manufacturer is not responsible if an incorrect installation and use causes injuries and damages. Always keep the instructions with your appliance for future reference.

**Warning!** To prevent any damages to your and others' life or property, you have to follow the safety notes.

**Warning!** Caution, risk of electricution!

#### 2.1 Children & vulnerable people safety

**Warning!** Risk of suffocation, injury or permanent disability.

- This appliance can be used by children aged from 8 years and above and persons with reduced physical, sensory or mental capabilities or lack of experience and knowledge if they have been given supervision or instruction for the operation of the appliance by a person who is responsible for their safety.
- Do not let children play with the appliance.
- Keep all packaging away from children.
- Keep all detergents away from children.
- Keep children and pets away from the appliance door when it is open.
- Cleaning and user maintenance shall not be made by children without supervision.
- Dishwasher detergents are strongly alkaline and they can be extremely dangerous if swallowed. Avoid contact with skin and eyes and always keep children away from the dishwasher when the door is open.

#### 2.2 Installation

- Remove all the packaging.
- Do not install or use a damaged appliance.
- Obey the installation instruction supplied with the appliance.
- Make sure that the floor where you install the appliance is flat, stable, heat resistant and clean.
- Do not install or use the appliance where the temperature is less than 5°C or higher than 35°C.
- Do not install the appliance behind a lockable door, a sliding door or a door with a hinge on the opposite side, where the appliance door can not be fully opened.
- Always be careful when you move the appliance because it is heavy. Always wear safety gloves.
- Always move the appliance vertically.
- The rear surface of the appliance must be put against the wall.
- The appliance can be installed as freestanding or below the kitchen counter with correct space (Refer to the Installation leaflet).
- When the appliance is put in its permanent position, check if it is fully level with the aid of a spirit level. If it is not, adjust the feet until it is.

#### Electrical Connection

- Make sure that the electrical information on the rating plate agrees with the power supply. If not, contact an electrician.
- Do not use multi-plug adapters and extension cables.
- Make sure not to cause damage to the mains plug and to the mains cable. Should the appliance power supply cable need to be replaced, this must be carried out by our Service Centre.
- Connect the mains plug to the mains socket only at the end of the installation. Make sure that there is access to the mains plug after the installation. Do not connect the appliance plug with a power connection board.
- Do not touch the mains cable or the mains plug with wet hands.

### Grounding Instructions

**Warning!** Risk of fire and electrical shock.

- The appliance must be earthed (grounded). In the event of a malfunction or breakdown, grounding will reduce the risk of an electric shock by providing a path of least resistance of electric current. This appliance is equipped with a cord having an equipment grounding conductor and a grounding plug.
- The plug must be plugged into an appropriate outlet that is installed and grounded in accordance with all local codes and ordinances.

**Warning!** Improper connection of the equipment-grounding conductor can result in the risk of electric shock.

**Warning!** Check with a qualified electrician or service representative if you are in doubt whether the appliance is properly grounded. Do not modify the plug supplied with the appliance, even if it does not fit the outlet. Have a qualified electrician install the correct power outlet for use.

### 2.3 Appliance use

**Warning!** Risk of fire, explosion, electric shock or damage to the appliance.

- Do not abuse, sit on, or stand on the door or dish racks of the dishwasher.
- Do not touch the heating element during or immediately after use.
- Do not operate your dishwasher unless all enclosure panels are properly in place. Open the door very carefully (and slowly) if the dishwasher is operating, as there is a risk of water spraying out.
- Do not place any heavy objects on the or stand on the door when it is open. Aside from potential damage to the appliance, the appliance could tip forward.
- When loading items to be washed:
  - 1) Locate sharp items so that they are not likely to damage the door seals;
  - 2) Warning: Knives and other utensils with sharp points/edges, must be loaded into the cutlery drawer with their sharp points facing down, or placed in a horizontal position.
- When using your dishwasher, you should prevent plastic items from coming into contact with the heating element.
- Check that the detergent compartment is empty after the completion of the wash cycle.
- Do not wash plastic items within the dishwasher unless they are marked as dishwasher safe (or equivalent). For plastic items without markings, always refer to the manufacturer's recommendations.
- Use only detergent and rinse additives designed for an automatic dishwasher.
- Never use soap, laundry detergent or hand washing detergent in your dishwasher. Keep these products out of the reach of children.
- Keep children away from detergent and rinse aid, keep children away from the open door of the dishwasher, as there could still be residual detergent left inside.
- Never leave the dishwasher door open as this creates a tripping hazard.
- The appliance is to be connected to the water mains using the new hose sets supplied (never use old or existing hoses).
- The maximum place settings to be washed is 14.
- The maximum permissible inlet water pressure is 1Mpa, whilst the minimum is 0.04Mpa.
- It is dangerous to open the dishwasher door whilst in operation, as the hot water may scald you.

### 2.4 Care and Cleaning

**Warning!** Risk of injury or damage to the appliance.

- Before maintenance, deactivate the appliance and disconnect the mains plug from the mains socket.
- Do not use water spray and steam to clean the appliance.
- Clean the appliance with a moist soft cloth. Only use neutral detergents. Do not use abrasive products, abrasive cleaning pads, solvents or metal objects.

### 2.5 Product Disposal

**Warning!** Risk of injury or suffocation.

- Disconnect the appliance from the mains supply.
- Cut off the mains cable and discard it.
- Remove the door catch to prevent children and pets to get closed in the appliance.
- Speak with your local council as to where best to discard the appliance, with most councils offering an appliance recycling service.
- Please dispose of packaging materials properly and recycle where possible.

### 2.6 Transport

Always move the appliance cautiously. Avoid using the appliance door or handle to lift the appliance.

### 2.7 Installation Positioning

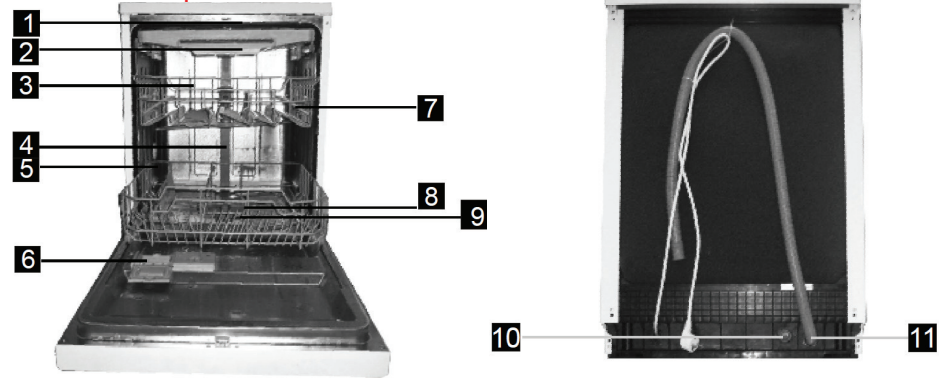
- Ensure that your appliance is installed on solid and flat ground, in a level position.
- Please do not place the appliance on a slope, soft carpet or wooden floor.
- Your appliance should only be installed within an internal environment. Do not install the appliance outdoors.

#### Level Adjusting

- If the floor is obviously uneven, your appliance feet need to be adjusted. If your appliance isn't level, it will cause your appliance to vibrate, and potentially move from its position.
- Adjust the appliance legs to ensure your appliance is level.

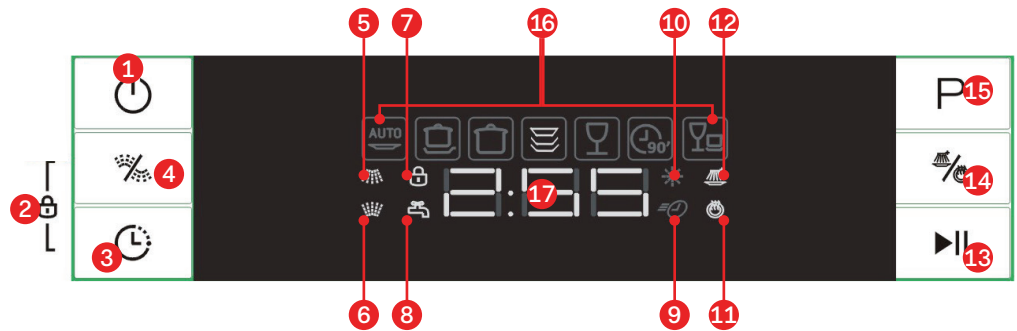
Your Appliance

3. Product Components



- |                 |                |                         |
|-----------------|----------------|-------------------------|
| 1 Top Spray Arm | 5 Lower Basket | 9 Filter Assembly       |
| 2 Cutlery Rack  | 6 Dispenser    | 10 Inlet Pipe Connector |
| 3 Upper Basket  | 7 Cup Shelf    | 11 Drain Pipe           |
| 4 Inner Pipe    | 8 Spray Arms   |                         |

4. Control Panel



- |                          |                           |                       |
|--------------------------|---------------------------|-----------------------|
| 1 On/Off Button          | 7 Child Lock Indicator    | 13 Start/Pause Button |
| 2 Child Lock             | 8 Water Supply Indicator  | 14 Function Button    |
| 3 Delay Button           | 9 Express Wash Indicator  | 15 Program Button     |
| 4 Alt Function Button    | 10 Rinse Aid Indicator    | 16 Program Display    |
| 5 Alt Function Indicator | 11 Extra Drying Indicator | 17 Time Display       |
| 6 Alt Function Indicator | 12 Strong Wash Indicator  |                       |

# Operating Instructions

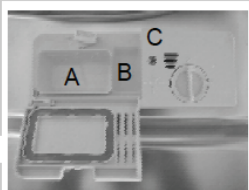
## 5. Quick Start

Follow the procedure below to operate your dishwasher.

Quick Operation Guide

For detailed operating method read the corresponding content on the instruction manual.

Switch on the appliance	Open the door, press the On/Off button to switch on the appliance.
↓	
Fill the detergent dispenser	<p><b>Compartment A:</b> For each wash cycle.</p> <p><b>Compartment B:</b> For programs with pre-wash only. (Follow the user instructions)</p>
↓	
Check the rinse aid level	<p><b>Mechanical indicator C.</b> Electric indicator on control panel (if provided).</p>
↓	
Load the baskets	Scrape off any large food particles. Soften remnants of burnt food in pans, then load the baskets. Refer to the dishwasher loading instructions.
↓	
Select a programme	Close the door, press the Program Button until the selected program lights up. ( See the section entitled "Operation instruction" )
↓	
Running the dishwasher	Turn on the water tap and press the <b>Start/Pause Button</b> . The machine will start working after about 10 seconds.
⋮	
<ul style="list-style-type: none"> <li>● Changing the programme</li> </ul>	<ul style="list-style-type: none"> <li>● 1. A running cycle can only be modified if it has been running for a short time. Otherwise the detergent may have already been released and the water already drained. If in this case, the detergent dispenser must be refilled.</li> <li>2. Press the Start/Pause button, the machine will be in standby state, press the program button more than 3 seconds then you can change the program to the desired cycle setting.</li> <li>3. Press the Start/Pause Button, the dishwasher will run after 10 seconds.</li> </ul>
<ul style="list-style-type: none"> <li>● Add forgotten dishes in the dishwasher.</li> </ul>	<ul style="list-style-type: none"> <li>● 1. Press the Start/Pause Button to stop the washing.</li> <li>2. Open the door a little.</li> <li>3. After the spray arms stop working, you can open the door completely.</li> <li>4. Add forgotten dishes.</li> <li>5. Close the door.</li> <li>6. Press the Start/Pause Button, the dishwasher will run after 10 seconds.</li> </ul>
<ul style="list-style-type: none"> <li>● If the appliance is switched off during a wash cycle.</li> </ul>	<ul style="list-style-type: none"> <li>● If the appliance is switched off during a wash cycle, when switched on again, please re-select the washing cycle and operate the dishwasher according to the original Power-on state ).</li> </ul>
↓	
Switch off the appliance	When the working cycle is finished, the buzzer of the dishwasher will sound 8 times, then stop. Turn off the appliance using the On/Off Button. If the appliance was under standby mode, it will be power off automatically after 30 minutes without any operation.
↓	
Turn off the water tap, unload the baskets	Warning: wait a few minutes (about 15 minutes) before unloading the dishwasher to avoid scald, as the dishes and utensils are still hot and more susceptible to break. They could also dry better. Unload the appliance, starting from the lower basket.



**⚠ WARNING!**

Open the door carefully. Hot steam may escape when the door is opened!

## 6. Wash Cycle Table

Program	Running Time	Description of Cycle	Detergent pre/main	Energy (Kw/h)	Water (L)	Rinse Aid required?
<b>Auto</b>	<i>This wash cycle provides an auto-sensing wash, lightly, normally or heavily soiled crockery, with or without dried food.</i>					
	150 mins	1. Pre-wash (45° C) 2. Auto-wash (45-55° C) 3. Rinse 4. Rinse (65° C) 5. Drying	5/27.5g or 'All in One'	0.9~1.3	11-15	Y
<b>Intensive</b>	<i>This wash cycle is ideal for the heaviest soiled loads, such as pots/pans, casserole dishes and dishes that have been sitting with dried food.</i>					
	170 mins	1. Pre-wash (50° C) 2. Wash (60° C) 3. Rinse 4. Rinse 5. Rinse (65° C) 6. Drying	5/27.5g or 'All in One'	1.5	17.5	Y
<b>Heavy</b>	<i>This wash cycle is ideal for heavily soiled loads such as plates, glasses and lightly soiled pots/pans.</i>					
	160 mins	1. Pre-wash (45° C) 2. Wash (55° C) 3. Rinse 4. Rinse (65° C) 5. Drying	5/27.5g or 'All in One'	1.3	13.5	Y
<b>Normal*</b>	<i>This wash cycle is ideal for normally soiled loads such as plates, glasses, etc. Ideal for your everyday cycle.</i>					
	170 mins	1. Pre-wash 2. Wash (45° C) 3. Rinse (48° C) 4. Drying	5/27.5g or 'All in One'	0.71	12.5	Y
<b>Glass</b>	<i>This wash cycle is ideal for lightly soiled loads, such as glasses, crystal and fine china.</i>					
	125 mins	1. Pre-wash 2. Wash (42° C) 3. Rinse 4. Rinse (60° C) 5. Drying	5/27.5g or 'All in One'	0.8	13	Y
<b>90 min</b>	<i>This wash cycle is ideal for lightly soiled crockery and glassware.</i>					
	90 mins	1. Wash (65° C) 2. Rinse 3. Rinse (65° C) 4. Drying	25g or 'All in One'	1.2	11.5	Y
<b>Rapid</b>	<i>This wash cycle provides a quick wash program for lightly soiled loads that do not require drying.</i>					
	30 mins	1. Wash (40° C) 2. Rinse 3. Rinse (45° C)	25g	0.6	11.5	N

\* AS/NZS 2007.1: This program is the test cycle. The information for comparability test in accordance with AS/NZS 2007.1, as follows:

- Capacity: 14 Place Settings
- Position Upper basket: upper wheels on rails
- Rinse Aid Setting: 6
- Open the the door slightly (50mm) to assist in drying of the dishes at the completion of each wash cycle

## 7. Operating the Dishwasher

### 7.1 Turning on the Appliance

Starting a wash cycle:

- Draw out the lower and upper baskets, load the dishes and push the baskets back into the dishwasher. It is recommended to load the lower basket first, followed by the upper basket (refer to the loading instructions within this user manual).
- Add the detergent into the dispenser and close (refer to the Detergent and Rinse Aid section of this user manual).
- Insert the plug into the power outlet. The power supply should be 220-240 VAC/50Hz and the power outlet should be 10A, 250VAC. Ensure that the water supply is on and allowing full pressure.
- Close the door and press the On/Off button to switch on the machine.
- Press the Program button to select your desired wash program. These will cycle in the following direction: Normal > Glass > 90 mins > Rapid > Auto > Intensive > Heavy.
- Once you've selected your wash program, press the Start/Pause button to begin your cycle.
- Should you wish to improve the drying performance, you can press the Extra Drying button before starting the cycle.

**Note:** When you press the Start/Pause button during operation, the cycle will pause. When in its paused state, the LED display will stop blinking and the dishwasher will beep every minute until you press the Start/Pause button once again to continue the cycle.

### 7.2 Changing the Wash Program

- A cycle that is underway can only be modified if it has been running for a short time. Otherwise the detergent may have already been released and/or drained the wash water. In this case, the detergent dispenser would need to be refilled.
- Press the Start/Pause button and the dishwasher will enter its standby state.
- Press and hold the Program button for 3 seconds and you can then change the program to your desired option.

**Note:** The dishwasher LED time display indicate the state of the dishwasher. If the display is flashing, the dishwasher is operating. If the display is not flashing, then the the dishwasher is in standby mode (Paused).

**Note:** If the dishwasher door is opening during a wash cycle, the dishwasher will pause. Once the door is closed, the dishwasher will resume its' cycle after 10 seconds.

### 7.3 At the Completion of a Wash Cycle

When the wash cycle has completed, your dishwasher will make an audible tone for 8 seconds, before stopping.

- Turn off the dishwasher using the On/Off button.
- Close the water supply off at the isolation tap.
- Open the door slightly (50mm) being careful to avoid the hot steam. This will assist the drying performance of your dishes.
- Leave the dishwasher for approximately 15 minutes, allowing the dishes and utensils to cool down. Hot dishes are also more susceptible to breakage and best left to cool.
- Empty the dishwasher, starting with the lower basket first, then the upper basket, followed by the cutlery rack last of all. This will avoid water dripping from the upper baskets onto your lower racks.

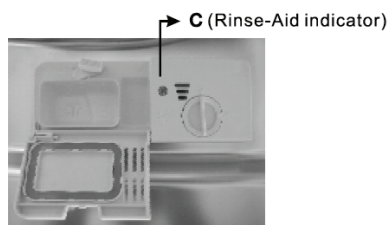
**Note:** It is normal for the inside of the dishwasher to remain wet at the completion of a cycle.

### 7.4 Child Lock

Your dishwasher features a child lock, preventing children from pressing keys or changing the dishwashers operation.

To activate the child lock:

- When the appliance is in operation, press and hold the “Delay” and “Alt Function” buttons simultaneously for 3 seconds. Once activated, the display will show the Child Lock icon.
- Whilst the Child Lock is activated, pressing of buttons won't effect the dishwasher.
- To deactivate the Child Lock, simply press and hold the “Delay” and “Alt Function” buttons simultaneously for 3 seconds. The Child Lock indicator icon will switch off the display.



- Full
- ◐ 3 / 4 full
- ◑ 1 / 2 full
- ◒ 1 / 4 full
- Empty

### 7.5 Rinse Aid Dispenser

The rinse aid is released during the final rinse to prevent water from forming droplets on your dishes, which can leave spots and streaks. It also improves drying by allowing water to roll off the dishes. Your dishwasher is designed to use liquid rinse aids. The rinse aid dispenser is located inside the door next to the detergent dispenser. To fill the dispenser, open the cap and pour the rinse aid into the dispenser until the level indicator turns completely black. The volume of the rinse aid container is about 110ml.

**Note:** Only use branded Rinse Aid with your dishwasher. Never fill with other substances such as liquid detergent, as these will damage your dishwasher.

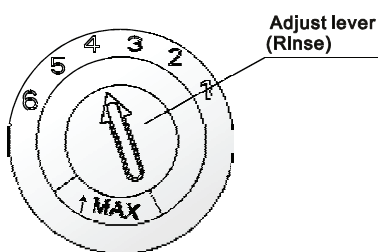
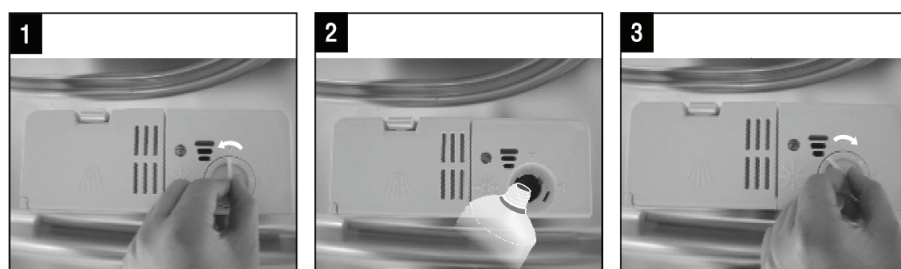
#### When to refill the Rinse Aid Dispenser

If there is no Rinse Aid warning indicator on the control panel, you can judge the amount of rinse aid within the dispenser using the optical level indicator (C) located next to the cap. You should never allow the dispenser to fall below 1/4 full.

**Note:** The size of the black dot indicates the Rinse Aid level.

#### How to refill the Rinse Aid Dispenser

- To open the dispenser, turn the cap to the open arrow (anti-clockwise) and lift out.
- Pour the Rinse Aid in to the dispenser, being careful not to overfill.
- Replace the cap by inserting it aligned with the “Open” arrow and turn in a clockwise direction to lock in place.
- Wipe up any Rinse Aid spillage to avoid excess foaming during your next wash cycle.



#### Adjusting the Rinse Aid Dispenser

The rinse aid dispenser has six settings. Always start with the dispenser set on “4”. If spots and poor drying are a problem, increase the amount of rinse aid dispensed by removing the dispenser lid and rotating the dial to “5”. If the dishes still are not drying properly or showing spots, adjust the dial to the next higher lever until your dishes are spot-free. The recommended setting is “4”.

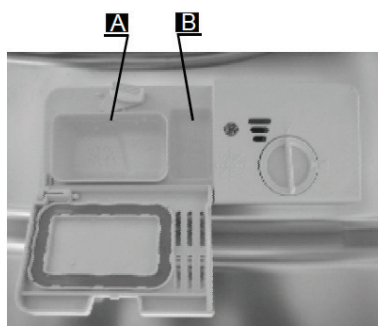
### 7.6 Detergent

Only use branded dishwasher detergents that are available from your local supermarket. The detergent dispenser must be re-filled before the start of each wash cycle. Your dishwasher utilises the latest technology and uses less detergent and Rinse Aid than conventional dishwashers.

#### Detergent Dispenser

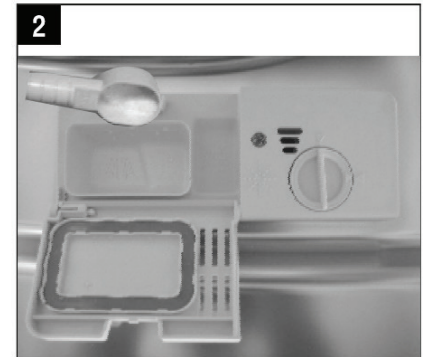
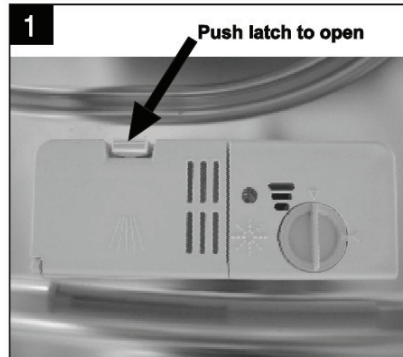
The dispenser is divided into two compartments.

- A: Location of the main wash cycle detergent
- B: Location of the pre-wash cycle detergent



**Adding Detergent to the Dispenser**

Always refer to the detergent manufacturer's guidelines for dosage.



— Once you've filled your detergent compartment, close the lid and press until it locks into place.

**7.7 Loading the Baskets and Racks**

Note: Always ensure your items are suitable for use within a dishwasher and are labelled as "dishwasher safe".

Warning! Very small items shouldn't be washed in the dishwasher as they could easily fall through the racks/baskets.

**Loading Normal Dishware**

**Loading the Upper Basket**

The upper basket is designed to hold more delicate and lighter dishware such as glasses, coffee and tea cups and saucers, as well as plates, small bowls and shallow pans (as long as they are not too dirty). Position the dishes and cookware so that they will not get moved by the spray of water.

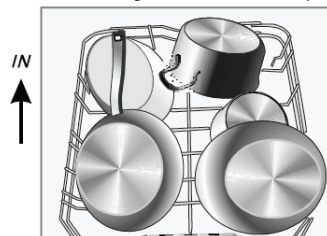


Please be reminded that:

- Pots, serving bowls, etc, must always be placed top down.
- Deep pots should be slanted to allow water to flow out.
- The Bottom Basket features folding spikes so that larger or more pots and pans can be loaded.

**Loading the Lower Basket**

We suggest that you place large items and the most difficult to clean items are to be placed into the lower basket: such as pots, pans, lids, serving dishes and bowls, as shown in the figure below. It is preferable to place serving dishes and lids on the side of the racks in order to avoid blocking the rotation of the top spray arm.



**Adjusting the Upper Basket**

The height of the upper basket can be adjusted in order to create more space for large utensils both for the upper /lower basket. The height of the upper basket can be adjusted by lift up the basket for the upper position, and up press the handle to lower the upper basket, see the picture below:

Lift the basket for upper position

Up press the handle to lower the basket



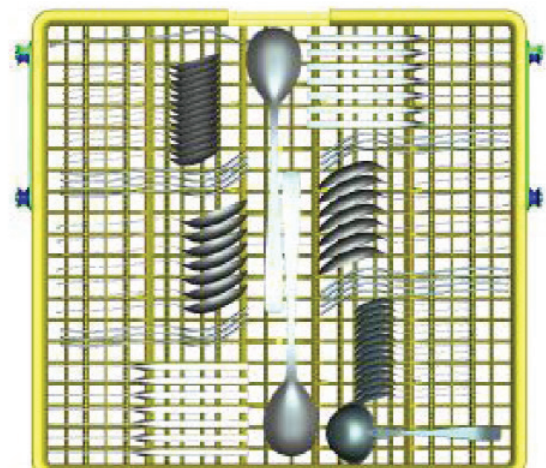
Adjust handle

**Cutlery Basket**

Cutlery should be placed into the cutlery rack separately from each other in the appropriate positions, and do make sure the utensils do not nest together, this may cause bad performance.

For a top quality cleaning, place the silverware in the basket making sure that:

- They do not stick together.
- Silverware is placed with the male face up.
- Long utensils in the middle.



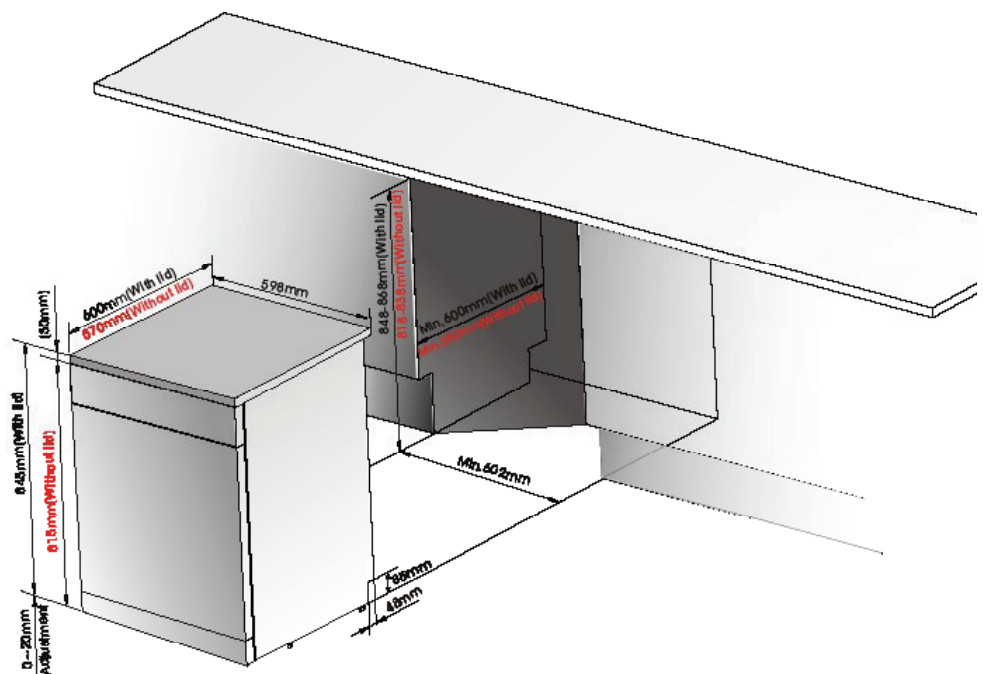
# Installation Instructions

It's important to carefully read the following installation instructions before beginning the installation of your dishwasher.

**Important!** The installation of the pipes and electrical outlets should be completed by suitably licensed and qualified persons.

### Positioning

- The installation position of the dishwasher should be near the existing inlet, drainage wastepipe and power outlet.
- Choose a position near your sink to facilitate the installation of inlet and drain hoses (refer to figure one).
- If the dishwasher is installed in the corner of your kitchen cabinetry, make sure an allowance is made to ensure your dishwasher door can freely open without obstruction from other cabinetry/door handles.

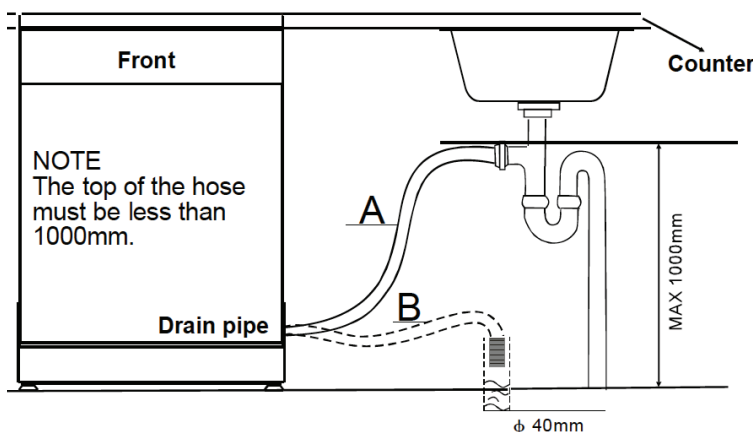


### Cold Water Connection

- Connect the cold water supply hose to a threaded 3/4(inch) connector and make sure that it is fastened tightly in place.
- If the water pipes are new or have not been used for an extended period of time, let the water run to make sure that the water is clear. This precaution is needed to avoid the risk of the water inlet to be blocked and damage the appliance.

### Connection of the drain hose

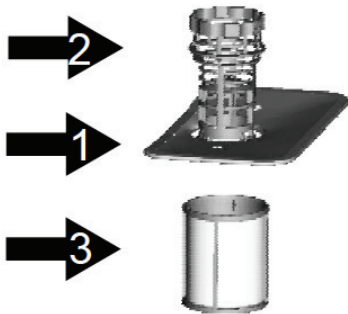
- Insert the drain hose into a drain pipe with a minimum diameter of 40mm, or connect it onto the trap of your sink where a dishwasher connection is present.



**Important!** The top of the hose must be less than 1000mm, as illustrated below.

**Note:** If you require a longer drain hose, make sure you use a similar drain hose. It must be no longer than 4 metres; otherwise the performance of the dishwasher will be effected.

## Cleaning & Maintenance



### 8. Maintenance and Cleaning Procedures

#### 8.1 Filter System

The filter system prevents larger remnants of food or other objects from entering the dishwasher pump. Residues may block the filter and in this case they should be removed.

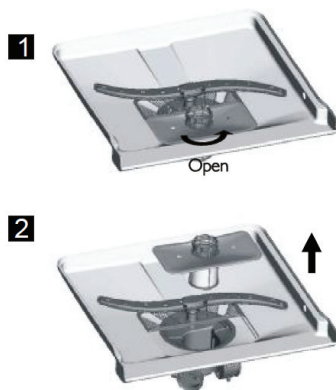
The filter system consists of a coarse filter, a flat main filter and a micro-filter.

1. Main Filter: Food and soil particles trapped within this filter and pulverised by a special jet on the lower spray arm and washed down the drain.
2. Coarse Filter: Larger items such as pieces of bones or glass are trapped in the coarse filter. To remove the items caught in this filter, gently squeeze the top of this filter and lift out.
3. Fine Filter: This filter holds soil and food residues in the sump area and prevents it from being re-deposited on to dishes during the wash cycle.

**Note:** For best wash results, the filter system should be cleaned regularly.

#### Cleaning the Filter

**Warning!** Never operate the dishwasher without the filters in place. Improper replacement of the filter may reduce the wash performance and/or damage dishes and utensils.



1. Turn the filter in an anti-clockwise direction.

2. Lift the filter assembly upwards.

- Wash the filter components under running water.
- Be careful not to damage the filters in any way.
- To re-install the filter assembly, follow the above two steps in reverse.

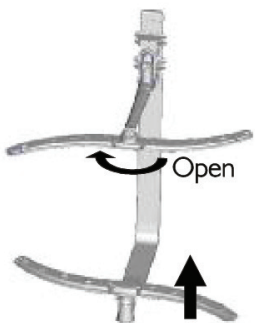
**Note:** Inspect the filters for blockage after each dishwasher use.

#### 8.2 Cleaning the Door

To clean the edge around the dishwasher door, you should only use a soft warm damp cloth. Never use a spray cleaner of any kind, as these can penetrate sealed components. Never use abrasives.

#### 8.3 Cleaning the Spray Arms

It is necessary to clean the spray arms regularly for water chemicals, as these will clog the spray arm jets and bearings.



- To remove the upper spray arm, hold the nut and rotate the arm clockwise to remove it.
- To remove the lower spray arm, pull the spray arm upward.
- Wash the spray arms in warm soapy water and use a soft bristle brush to clean the jets.
- Replace the spray arms after rinsing them thoroughly.

**8.4 Error Alarms**

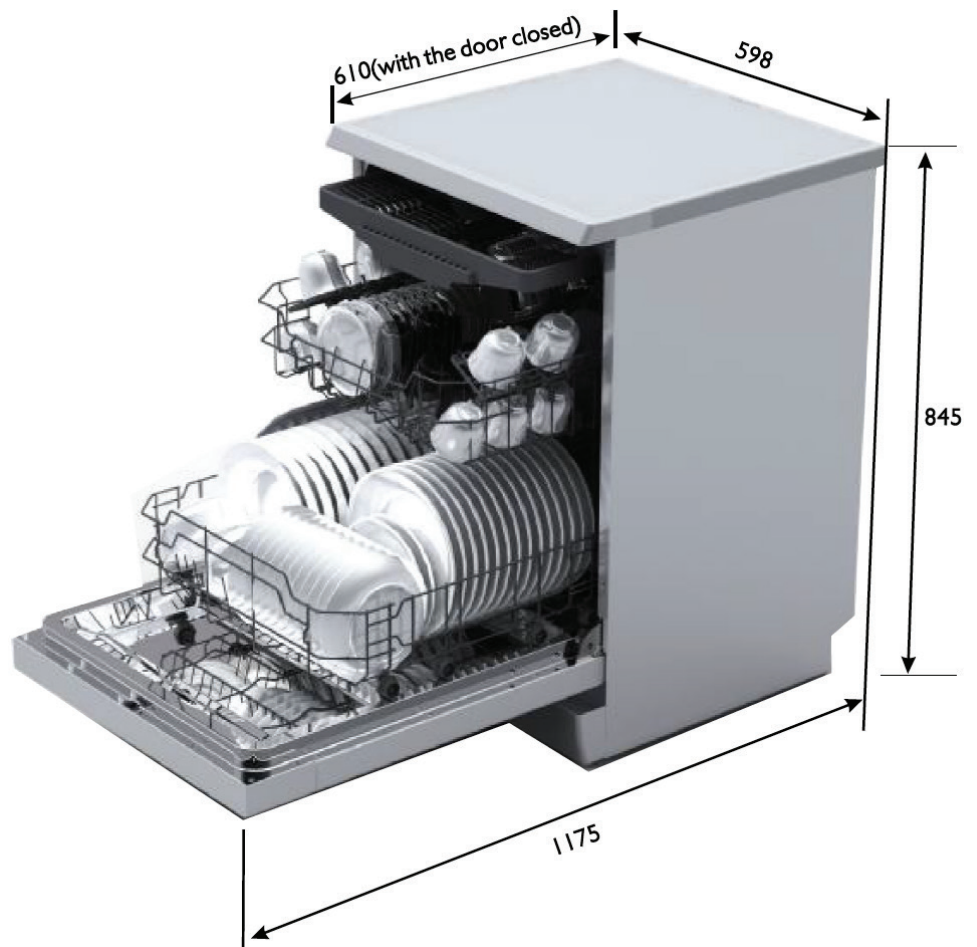
When a malfunction occurs, the dishwasher will display an error code to warn you. These are outlined below.

**Warning!** If an overflow occurs, immediately turn off the main water supply before calling our service department. If there is water in the base pan because of an overflow or small leak, the water should be removed before re-starting the dishwasher.

<i>Codes</i>	<i>Meanings</i>	<i>Possible Causes</i>
E1	Longer inlet time.	Faucet is not opened, or water intake is restricted, or water pressure is too low.
E3	Not reaching required temperature	Malfunction of heating element.
E4	Overflow.	Some element of dishwasher leaks.
E8	Failure of orientation of distributary valve.	Open circuit or break of distributary valve.

**8.5 Technical Information**

Height x Width x Depth	845mm x 598mm x 610mm (door closed)
Water pressure	0.04-1.00 MPa
Power Supply	Refer to the rating label
Capacity	14 Place Settings
Net Weight	42kg



## Troubleshooting

### 9. Troubleshooting

**Warning!** Only authorised technicians can carry out repairs.

Before contacting our customer service team, please refer to the table below to see if your fault can be fixed by yourself. Should a service technician visit be arranged and its found there are no faults with the appliance, a call out charge will apply.

Problem	Solutions
The dishwasher won't start or turn on	<ul style="list-style-type: none"> <li>– Check that the mains plug is inserted and switched on at the power point.</li> <li>– Check that the relevant fuse hasn't blown.</li> <li>– Ensure that the dishwasher isn't over-loaded and the door is closed completely.</li> <li>– Error code E1 indicates that the water pressure is low. Ensure that the water supply is on and fully open.</li> </ul>
Water isn't being drained from the dishwasher	<ul style="list-style-type: none"> <li>– Check that the drain hose isn't kinked .</li> <li>– Check that the filter isn't clogged. Follow the filter cleaning process within this user manual.</li> <li>– Check that your waste outlet isn't clogged.</li> </ul>
Residual soap suds in the dishwasher after a wash cycle	<ul style="list-style-type: none"> <li>– Ensure that you are only using dishwasher detergents and the correct dosage.</li> <li>– Open the dishwasher and allow suds to evaporate. Then add 1 litre of cold water into the base of the dishwasher, close the door, select any wash cycle and allow the dishwasher to drain the water. Repeat if necessary.</li> </ul>
Stained interior	<ul style="list-style-type: none"> <li>– Avoid using detergents with colourants, as they can lead to staining.</li> </ul>
White film on internal dishwasher surface	<ul style="list-style-type: none"> <li>– This can be caused where the water quality is poor and contains hard water minerals. To clean the interior, simply use a damp sponge with some dishwasher detergent. Never use harsh abrasives.</li> </ul>
There are rust stains on cutlery	<ul style="list-style-type: none"> <li>– The cutlery may not be corrosion resistant and shouldn't be used within the dishwasher.</li> </ul>
Banging or knocking noise within the dishwasher cabinet during cycle	<ul style="list-style-type: none"> <li>– A spray arm is knocking against an item within a basket. Pause the dishwasher and re-arrange the items to ensure the spray arms are free to rotate.</li> </ul>
The dishes are not clean after a wash cycle has completed or residual detergent left on dishes	<ul style="list-style-type: none"> <li>– Ensure that you are loading the baskets and racks correctly, as per the recommendations.</li> <li>– Try using a different wash program (i.e. a more intensive option).</li> <li>– Try using a different detergent or different dosage.</li> </ul>
The dishes are not drying	<ul style="list-style-type: none"> <li>– Ensure that the dishwasher is loaded correctly.</li> <li>– Ensure that you have Rinse Aid loaded in the Rinse Aid dispenser and try adjusting the Rinse Aid Dispenser to a higher level.</li> <li>– Remember to slightly open the dishwasher door at the completion of its cycle.</li> </ul>
Knocking noise within the water pipes	<ul style="list-style-type: none"> <li>– This has no influence on the dishwasher function and relates to the household plumbing.</li> <li>– Speak to a qualified plumber to discuss your options.</li> </ul>

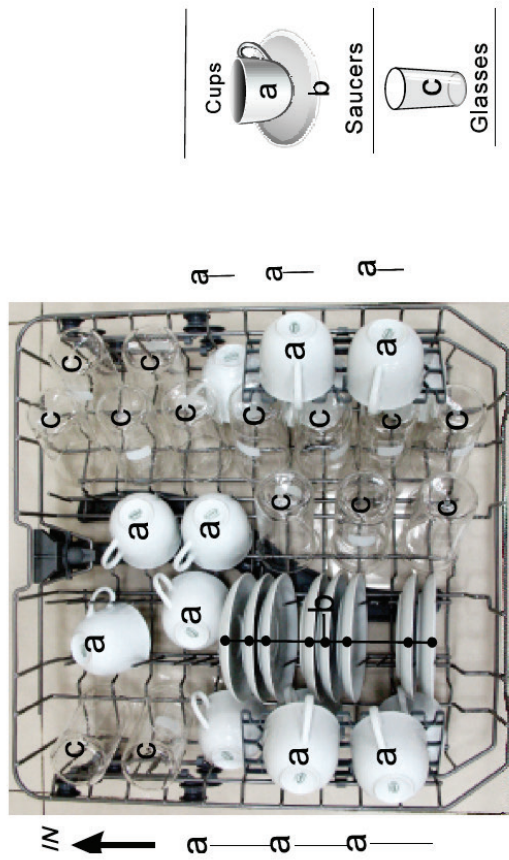
#### Note:

If the above steps don't resolve your issue or you cannot resolve the fault by yourself:

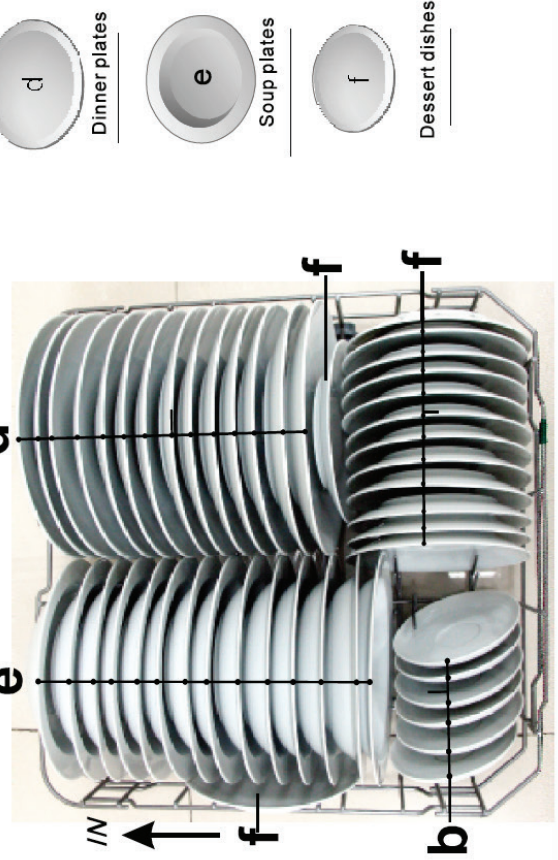
- Press the "On/Off" button,
- Switch off the appliance at the power outlet and remove the plug,
- Call our customer service team.

**Loading the baskets according to (\*AS/NZS 2007.1) :**

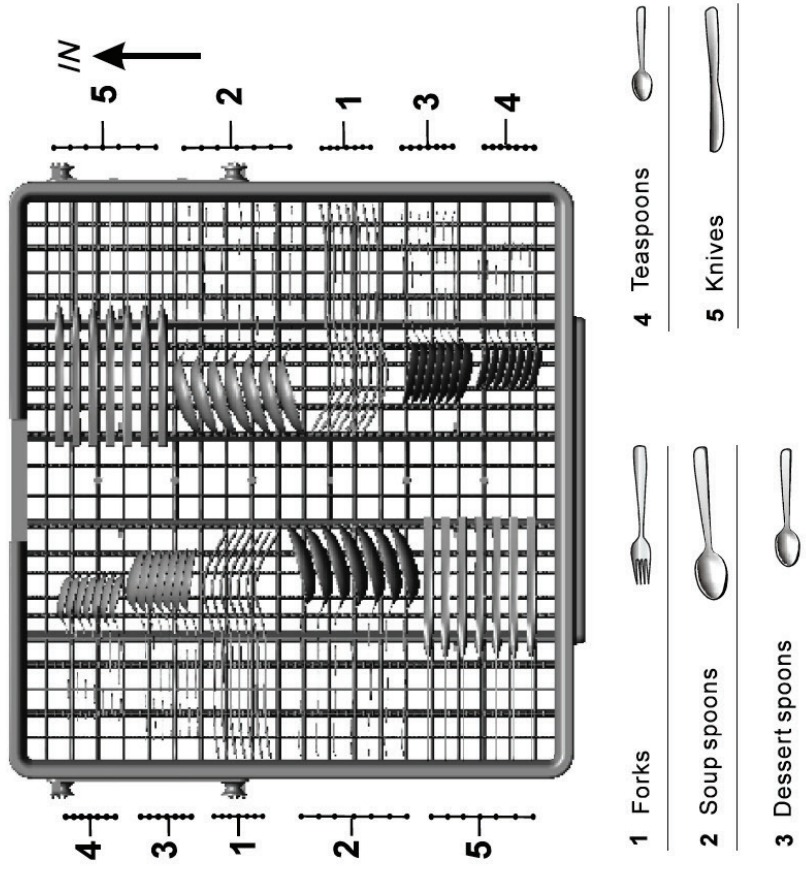
**1. Upper basket:**



**2. Lower basket:**



**3. Cutlery basket:**



Information for comparability tests in accordance with (\*AS/NZS 2007.1)

- Voltage: 220~240V/50Hz
- Capacity: 14 place settings
- Position of the upper basket: lower
- Programme: Normal
- Detergent (Pre/main): 5 g/27.5 g
- Rinse aid setting: 6
- Door is open at the end of the drying cycle for the drying performance test (Door position: Open 50 mm)

## Warranty

### 11. WARRANTY TERMS & CONDITIONS

#### —RESIDENTIA DISHWASHERS

This document sets out the terms and conditions of the product warranties for Residentia Group Appliances. It is an important document. Please keep it with your proof of purchase documents in a safe place for future reference should you require service for your Appliance.

#### 1. IN THIS WARRANTY

- a) 'acceptable quality' as referred to in clause 10 of this warranty has the same meaning referred to in the ACL;
  - b) 'ACL' means Trade Practices Amendment (Australian Consumer Law) Act (No.2) 2010;
  - c) 'Appliance' means any Residentia Group product purchased by you accompanied by this document;
  - d) 'ASR' means Residentia Group authorised service representative;
  - e) 'Residentia Group' means Residentia Group Pty Ltd of 7/32 Wangaratta Street, Richmond, Victoria 3121, ACN 600 546 656 in respect of Appliances purchased in Australia;
  - f) 'major failure' as referred to in clause 10 of this warranty has the same meaning referred to in the ACL and includes a situation when an Appliance cannot be repaired or it is uneconomic for Residentia Group, at its discretion, to repair an Appliance during the Warranty Period;
  - g) 'Warranty Period' means:
    - i) where the Appliance is used for personal, domestic or household use (i.e. normal single family use) as set out in the instruction manual, the Appliance is warranted against manufacturing defects for 24 months, following the date of original purchase of the Appliance;
    - h) 'you' means the purchaser of the Appliance not having purchased the Appliance for re-sale, and 'your' has a corresponding meaning.
2. This warranty only applies to Appliances purchased and used in Australia and is in addition to (and does not exclude, restrict, or modify in any way) any non excludable statutory warranties in Australia.
  3. During the Warranty Period Residentia Group or its ASR will, at no extra charge if your Appliance is readily accessible for service, without special equipment and subject to these terms and conditions, repair or replace any parts which it considers to be defective. Residentia Group or its ASR may use remanufactured parts to repair your Appliance. You agree that any replaced Appliances or parts become the property of Residentia Group. This warranty does not apply to light globes, batteries, seals, filters or similar perishable parts.
  4. Parts and Appliances not supplied by Residentia Group are not covered by this warranty.
  5. You will bear the cost of transportation, travel and delivery of the Appliance to and from Residentia Group or its ASR. If you reside outside of the service area, you will bear the cost of:
    - a) travel of an authorised representative;
    - b) transportation and delivery of the Appliance to and from Residentia Group or its ASR, in all instances, unless the Appliance is transported by Residentia Group or its ASR, the Appliance is transported at the owner's cost and risk while in transit to and from Residentia Group or its ASR.
  6. Proof of purchase is required before you can make a claim under this warranty.
  7. You may not make a claim under this warranty unless the defect claimed is due to faulty or defective parts or workmanship. Residentia Group is not liable in the following situations (which are not exhaustive):
    - a) the Appliance is damaged by:
      - i) accident
      - ii) misuse or abuse, including failure to properly maintain or service

- iii) normal wear and tear
  - iv) power surges, electrical storm damage or incorrect power supply
  - v) incomplete or improper installation
  - vi) incorrect, improper or inappropriate operation
  - vii) insect or vermin infestation
  - viii) failure to comply with any additional instructions supplied with the Appliance;
- b) the Appliance is modified without authority from Residentia Group in writing;
- c) the Appliance's serial number or warranty seal has been removed or defaced;
- d) the Appliance was serviced or repaired by anyone other than Residentia Group, an authorised repairer or ASR.
8. This warranty, the contract to which it relates and the relationship between you and Residentia Group are governed by the law applicable where the Appliance was purchased.
9. To the extent permitted by law, Residentia Group excludes all warranties and liabilities (other than as contained in this document) including liability for any loss or damage whether direct or indirect arising from your purchase, use or non use of the Appliance.
10. For Appliances and services provided by Residentia Group in Australia, the Appliances come with a guarantee by Residentia Group that cannot be excluded under the Australian Consumer Law. You are entitled to a replacement or refund for a major failure and for compensation for any other reasonably foreseeable loss or damage. You are also entitled to have the Appliance repaired or replaced if the Appliance fails to be of acceptable quality and the failure does not amount to a major failure. The benefits to you given by this warranty are in addition to your other rights and remedies under a law in relation to the Appliances or services to which the warranty relates.
11. At all times during the Warranty Period, Residentia Group shall, at its discretion, determine whether repair, replacement or refund will apply if an Appliance has a valid warranty claim applicable to it.
12. Missing parts are not covered by warranty. Residentia Group reserves the right to assess each request for missing parts in a case by case basis. Any parts that are not reported missing in the first week after purchase will not provide free of charge.
13. To enquire about claiming under this warranty, please follow these steps:
- a) carefully check the operating instructions, user manual and the terms of this warranty;
  - b) have the model and serial number of the Appliance available;
  - c) have the proof of purchase (e.g. an invoice) available;
  - d) telephone the numbers shown below.
14. You accept that if you make a warranty claim, Residentia Group and its ASR may exchange information in relation to you to enable Residentia Group to meet its obligations under this warranty.

**IMPORTANT!** Before calling for service, please ensure that the steps in point 13 have been followed.

---

Telephone contacts:	Service Centre:	1300 11 HELP (4357)
	Spare Parts:	1300 11 SPARE (7277)

---

**The Australian Consumer Law requires the inclusion of the following statement with this warranty:** Our goods come with guarantees that cannot be excluded under the Australian Consumer Law. You are entitled to a replacement or refund for a major failure and for compensation for any other reasonably foreseeable loss or damage. You are also entitled to have the goods repaired or replaced if the goods fail to be of acceptable quality and the failure does not amount to a major failure.

# TEKA

TECHNIK & KÜCHE