

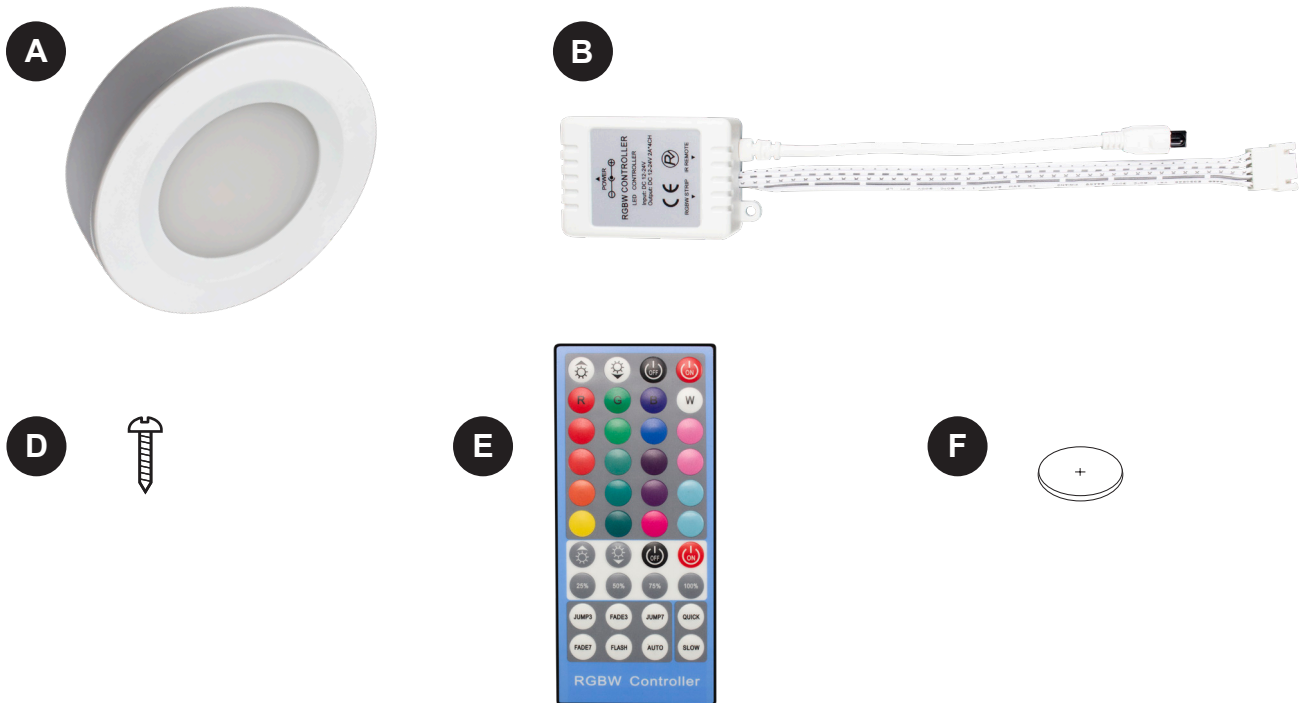
3 PK RGB+WHITE LED PUCK LIGHTS

Model Number: 0005-0052



Questions, problems, missing parts?
Before returning to your retailer, call our customer service at
1-844-255-9692 Monday – Friday 8:00 a.m. – 5:00 p.m. CST

PACKAGE CONTENTS



PART	DESCRIPTION	QUANTITY
A	LED Puck Light	3
B	In-Line Receiver	1
C	12V Plug-in Power Supply	1
D	Mounting Screws	8
E	Handheld Remote Control	1
F	CR2025 Battery	1

Note: Hardware not shown to actual size.



Questions, problems, missing parts?
Before returning to your retailer, call our customer service at
1-844-255-9692 Monday – Friday 8:00 a.m. – 5:00 p.m. CST

Patriot Lighting® is a registered trademark
of Menard, Inc. All Rights Reserved.

SAFETY INFORMATION

Please read and understand this entire manual before attempting to assemble, operate or install the product.

READ AND FOLLOW ALL SAFETY INSTRUCTIONS

WARNING:

- This product is not a toy and contains small parts. Close supervision is necessary when this unit is used near children. The remote control contains a button battery. If swallowed, it could cause severe injury or death in just 2 hours. Seek medical attention immediately.
- To reduce the risk of electrical shock, do not put the unit in water or other liquid. Do not place or store unit where it can fall or be pulled into a tub or sink. Do not open battery compartment with wet hands.
- Ensure mounting surface is sturdy. Do not mount pucks to moving or unstable surfaces.
- For cleaning, use a soft dry cloth. Do not use alcohol, benzene, thinner, or other caustic chemicals to clean the puck light. Do not use the light in places which are extremely hot, cold, dusty, or humid.

SAVE THESE INSTRUCTIONS

PREPARATION

Before beginning assembly, installation, or operation of product, make sure all parts are present. Compare parts with package and hardware contents lists on page 1. If any part is missing or damaged, do not attempt to assemble, install or operate the product. Contact customer service for replacement parts.

Helpful Tools (not included): Tape measure, pencil

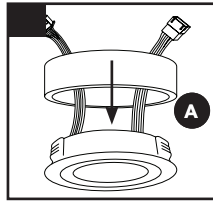
Estimated assembly time: 15 minutes

INSTALLATION INSTRUCTIONS

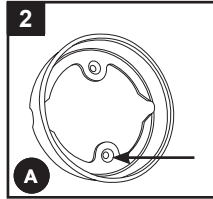
WARNING

- Ensure mounting surface is sturdy. Do not mount pucks to moving or unstable surfaces.

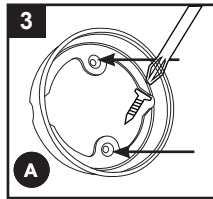
1. Separate the surface ring from the LED puck light (A) by holding the surface ring of the puck firmly with your fingers while the lens is facing away from you, pressing the back of the puck light housing with your thumbs outward.



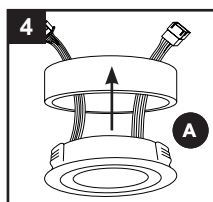
2. Using the surface ring as a template, mark the locations of the mounting holes on the mounting surface. Be sure to orient the side openings according to where the puck's (A) lead wires will be routed towards adjacent pucks and/or the nearest power outlet.



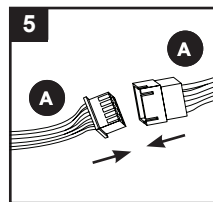
3. Secure surface ring to a sturdy mounting surface using mounting screws (D) provided. Use an awl or nail to start screw-holes if needed. Ensure puck lights (A) are no more than 23 inches apart and the first puck light (A) in the series is no more than 72 inches from the nearest power outlet. Repeat this process for all 3 puck light surface rings (A).



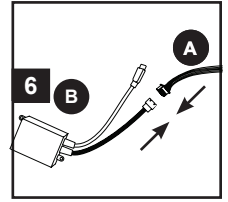
4. Route the lead wires through the openings on either side of the surface ring, then push the puck light housing into the surface ring. Repeat this process for all 3 puck lights (A).



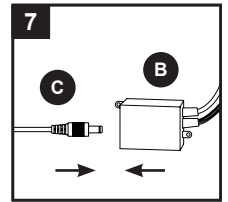
5. Connect each puck light (A) to one another by securely fastening each connector on either end of the puck light's (A) lead wires, starting at the last puck light (A) in the series.



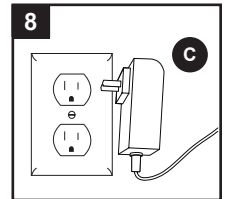
6. Connect the in-line receiver (B) to the first puck light (A) in the series by securely fastening each clip connector on the lead wires.



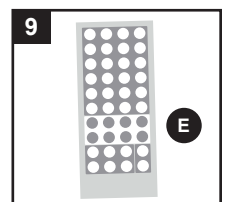
7. Connect the 12V plug-in power supply (C) to the receiver by plugging the DC connection jack into the input side of the receiver.



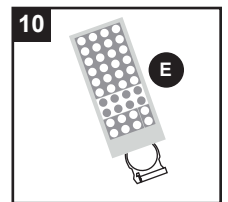
8. Plug the 12V plug-in power supply (C) to an appropriate power outlet.



9. Use remote control (E) for on/off control, dimming, and color control. Remove plastic tab from battery door before use.



10. To replace remote control's battery (F), follow directions on the back of remote control (E) to slide battery drawer out. Replace battery (+ side up) and slide battery drawers back in place.



CARE AND MAINTENANCE

- Do not use chemical solvents or harsh abrasives to clean puck lights.
- LEDs are not serviceable. Do not attempt to open or service LEDs or LED housing.

TROUBLESHOOTING

- 1) Pucks will not light up.
 - a) Ensure all connections are correct and have not disconnected.
- 2) Pucks will not respond to remote control.
 - a) Remote control signal is weak. Replace remote control battery.
 - b) Remote control is too far from puck lights. Use remote control closer to the puck lights.
 - c) Plastic safety tab has not been removed. Remove plastic tab from battery drawer.
- 3) Pucks are out of sync.
 - a) Unplug pucks and re-connect before trying again.

If unable to fix any of the above issues, please consult a certified electrician.

FCC Compliance Statement

This device complies with part 15 of the FCC Rules. Operation is subject to the following two conditions:

1. This device may not cause harmful interference, and
2. This device must accept any interference received, including interference that may cause undesired operation.

FCC WARNING

This equipment has been tested and found to comply with the limits for a Class B digital device, pursuant to Part 15 of the FCC Rules. These limits are designed to provide reasonable protection against harmful interference in a residential installation. This equipment generates, uses and can radiate radio frequency energy and, if not installed and used in accordance with the instructions, may cause harmful interference to radio communications. However, there is no guarantee that interference will not occur in a particular installation. If this equipment does cause harmful interference to radio or television reception, which can be determined by turning the equipment off and on, the user is encouraged to try to correct the interference by one or more of the following measures:

- Reorient or relocate the receiving antenna.
- Increase the separation between the equipment and the receiver.
- Connect the equipment into an outlet different from that to which the receiver is connected.
- Consult the dealer or an experienced radio/TV technician for help.

FIVE-YEAR LIMITED WARRANTY

If, during normal use, this PATRIOT LIGHTING® lighting fixture breaks or fails due to a defect in material and workmanship within five (5) years from the date of original purchase, simply bring this lighting fixture with your original sales receipt back to your nearest MENARDS® retail store. At its discretion, PATRIOT LIGHTING® agrees to have the product or any defective part(s) repaired or replaced with the same or similar PATRIOT LIGHTING® product free of charge, within the stated warranty period, when returned by the original purchaser with original sales receipt. This warranty; (1) excludes expendable parts including but not limited to light bulbs; (2) does not cover damage that has resulted from abuse or misuse; and (3) does not cover any losses, labor, injuries to persons/ property or costs. This warranty does give you specific legal rights and you may have other rights, which vary from state to state.