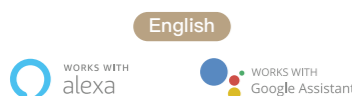


78mm

135mm



Instruction Manual Temperature and Humidity Smart Switch Module Model: MS-103



- Bitte scannen Sie den QR-Code, um das deutsche Handbuch, das Installationsvideo und die Funktionseinführung zu erhalten
- Escanee el código QR para obtener el manual en español, el video de instalación y la introducción de la función
- Veuillez scanner le code QR pour obtenir le manuel en français, la vidéo d'installation et l'introduction des fonctions
- Отсканируйте QR-код, чтобы получить руководство на русском языке, видео по установке и описанию функций
- Leia o código QR para obter o manual em português, o vídeo de instalação e a introdução das funções



请扫描二维码获取中文说明书、安装视频及功能介绍

Thank you for purchasing your smart home product.
Ready to get started?
Download the Smart Life app to manage your smart home products straight from your phone or tablet.
Easily connect to your home Wi-Fi and control multiple devices with the touch of your fingertips.

Introduction

MS-103 is an easy-to-use, safe and reliable dual relay output temperature and humidity controller.
It can be used as overtemperature protection and automatic temperature & humidity control system for various electric appliances such as equipment for home-brew, pet breeding, incubation, seedling heat mats, terrestrial heat control, constant temperature cycle of heating pump, culture fermentation, accelerating germination, electric radiator, electric oven, automatic watering, humidification and dehumidification as humidity control system.

- Control Your Device From Anywhere – Control your device from wherever you are with the free smart life app.
- Dual relay output – Be able to connect with refrigeration and heating equipment at the same time
- Temperature Unit – Supports Centigrade or Fahrenheit
- High and low temperature alarms are available
- Group Control – Create a group to control different home devices at the same time.
- Share devices: You can share the devices with your family, and then different people can control it without setting up again.

Specifications

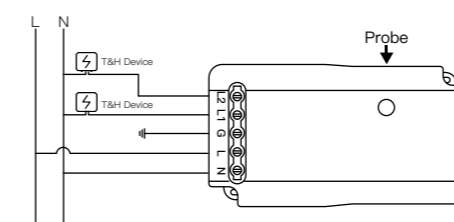
Model: MS-103
Input Voltage: 90–250V AC, 50/60Hz
Max. Current: 15A/Gang; Total 15A
Temperature Measurement Range: –40–80 °C / –40–176 ° F
Humidity Measurement Range: 0–99%
Wireless Protocol: Wi-Fi 2.4GHz 802.11 b/g/n
APP Control: Smart Life APP (Android 4.4/iOS 8.0 or above)
Type of Temperature and Humidity Probe: 3.3–5.5VDC
Temperature and Humidity Accuracy: ±3%RH ±0.5°C
Probe Length: Max. 30 meters available

NOTE:

Before installing Smart Life App, please check your home network setting as following:

- Check your home routers or related: please use 2.4G Wi-Fi network. Recommend set your 2.4G network and 5G network different names.
- Your phone is connected with your home 2.4G Wi-Fi network.
- To stay strong Wi-Fi connection, please keep smart device close to router.
- Whether connected devices have reached the maximum number of router connections, if so, remove the device from the filter list and make sure that router is not prohibiting device from connection.
- Please use English and numbers to name your Wi-Fi router. Otherwise the Smart Device may not recognize it when you try to add it into Smart Life.

WIRING DIAGRAM



STEP 1

How to Download Smart Life App

- Scan the QR code to download and install Smart Life app for iOS or Android phone.
- If you cannot download Smart Life app, please search "Smart Life" on Google Play (for Android phone) or Apple Store (for iOS phone) to download.

Download Smart Life APP

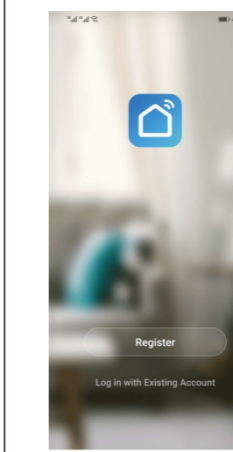


STEP 2

How to Sign Up an Account

You will need to sign up for an account after downloading the app. There are two ways to sign up for an account, using your cell phone number or your email address. Select the country you living in, and enter your cell phone number or email whichever makes you feel comfortable.

- If cell phone number is entered, you will receive a text message with registration code. Type the code, your password and confirm.
- If you enter email, you will be asked to create a password and then Confirm. Tap "Next" to continue.



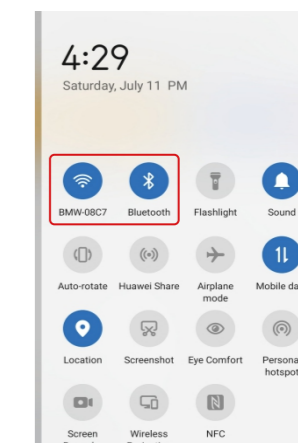
STEP 3

Wi-Fi link method Complete the wiring of the switch module before pairing How to reset /pair Wi-Fi code

Long press the reset button on the module until indicator flashes for reset.

3.1 Pair and clear up the WIFI code with Bluetooth and WIFI connected meantime.(New Updated)

- Make sure your phone is connected to Wi-Fi and Bluetooth.



3.2 Open Smart Life/Tuya App and Click "+", then the prompt page will automatically show on the screen. Click "Go to add".

English

1

2

English

English

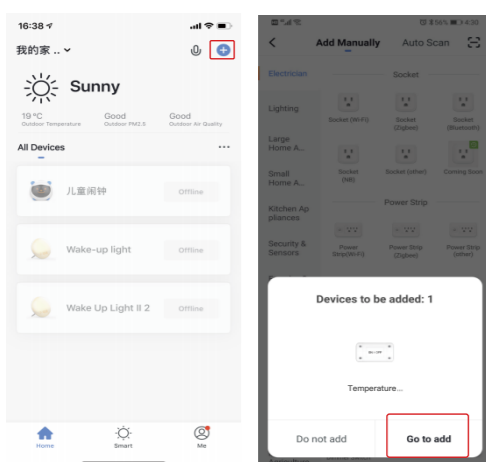
3

4

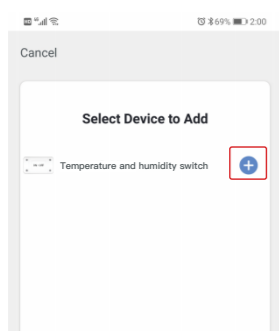
English

English

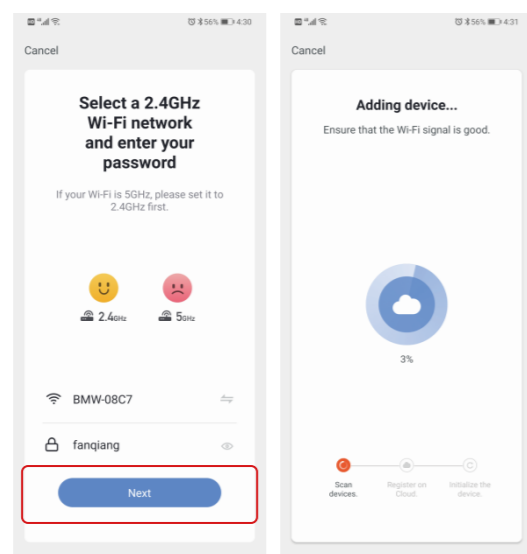
5



3. Select the device you want to add and click "+"



4. Enter Wi-Fi Password and click "Next", waiting for completing the connection.



5. Add the device successfully, you can edit the name of the device to enter the device page by click "Done"

FAQ

- If you cannot add your Smart Device, please check:
 - Whether the Smart Device is powered on.
 - Whether the phone is connected with 2.4GHz Wi-Fi network.
 - Please check routers or related: if your router is dual-band, please select 2.4GHz Wi-Fi network to connect your phone and Smart Plug.
 - Setting up Wi-Fi router: setting encryption method as WPA2-PSK and authorization type as AES, or set both as auto. Wireless mode cannot be 11n only.
 - Please use English and numbers to name your Wi-Fi router. Otherwise our Smart Plug may not recognize it when you try to add it into Smart Life.
 - To stay strong Wi-Fi connection, please keep smart device close to router.
 - Whether connected devices have reached the maximum number of router's connections. If so, please turn off some devices connected to the router and try again.
 - The manual (automatic) mode can be switched only when the temperature and humidity probe is on.
 - The temperature & humidity probe and dual relay output will be off when the main switch is turned off; And only the temperature and humidity probe will be ON when the main switch is ON.

Control Function Instructions

- Heating Mode**
When the measured temperature < Low Temperature Value the controller will enter the heating state, the switch module is on, HEATING output works.
When the measured temperature ≥ High Temperature Value, the switch module is off and the HEATING output turns off.
- Cooling Mode**
When the measured temperature > High Temperature Value, the controller will enter the cooling state, the switch module is on, COOLING output works;
when measured temperature ≤ Low Temperature Setting Value, the switch module is off and the COOLING output turns off.
- Humidifying Mode**
When the measured humidity < Low Humidity Value the controller will enter the humidifying state, the switch module is on, HUMIDIFYING output works.
When the measured humidity ≥ High Humidity Value, the switch module is off and the HUMIDIFYING output turns off.
- Dehumidifying Mode**
When the measured humidity > High Humidity Value the controller will enter the dehumidifying state, the switch module is on, DEHUMIDIFYING output works.
When the measured humidity ≤ Low Humidity Value, the switch module is off and the DEHUMIDIFYING output turns off.

Contact us

For any inquiries comments concerning to our products, please do not hesitate to send us email, and we will respond to you as soon as possible.

We appreciate your support!

SERVICE

- During the free warranty period, if the product breaks down during normal use, we will offer free maintenance for the product.
- Natural disasters/man-made equipment failures, disassembly and repair without the permission of our company, no warranty card, products beyond the free warranty period, etc., are not within the scope of free warranty
- Any commitment (oral or written) made by the third party (including the dealer/service provider) to the user beyond the warranty scope shall be executed by the third party
- Please keep this warranty card to ensure your rights
- Our company may update or change the products without notice. Please refer to the official website for the updates.

RECYCLING INFORMATION

All products marked with the symbol for separate collection of waste electrical and electronic equipment (WEEE Directive 2012/19 / EU) must be disposed of separately from unsorted municipal waste. To protect your health and the environment, this equipment must be disposed of at designated collection points for electrical and electronic equipment designated by the government or local authorities. Correct disposal and recycling will help prevent potential negative consequences for the environment and human health. To find out where these collection points are and how they work, contact the installer or your local authority.

WENZHOU NOVA NEW ENERGY CO.,LTD
Address: Power Science and Technology Innovation Center, NO.238, Wei 11 Road, Yueqing Economic Development Zone, Yueqing, Zhejiang, China
Tel: +86-577-87188818
Email: jianca@moeshouse.com
AMDLAB GmbH
Laubenhof 23, 45326 Essen
Made in China

WARRANTY CARD

Product Information

Product Name _____
Product Type _____
Purchase Date _____
Warranty Period _____
Dealer Information _____
Customer's Name _____
Customer Phone _____
Customer Address _____

Maintenance Records

Failure date	Cause Of Issue	Fault Content	Principal

Thank you for your support and purchase at we Moes, we are always here for your complete satisfaction, just feel free to share your great shopping experience with us.



If you have any other need, please do not hesitate to contact us first, we will try to meet your demand.

FOLLOW US

@moessmart
@moes_smart
@moes_smart
www.moeshouse.com



English

English

7

8

English

English

9

10

English

English

11

11