

CUCKOO

Disinfectant Solution Generator

USER MANUAL

Product specifications

Product name : Disinfectant Solution Generator

Model Name : CS-A0250AW, CS-A0250WH

Components : Product, USB cable, User Manual

Weight : 246g

Dimension : H (262mm), D (70mm)

Rated Voltage : DC 5V 1A

Power Consumption : 5W

Capacity : 250ml

Charging time : 3 to 4 hours

Function : Sterilization & Deodorization

Operation mode : 2 modes

- Low : 3 minutes / 4ppm

- High : 6 minutes / 6ppm

(Concentration value may differ depending on the water quality)

Product image and name of components

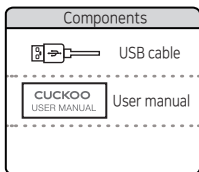


Spray

Water container

Main body
(Disinfectant Solution
Generator)

Operation button
(Generation / Stop making
sterilized water)



Components



USB cable

CUCKOO
USER MANUAL

User manual

Caution for Use

1. Please fully charge the product for 3 to 4 hours with the USB cable enclosed before using the product for the first time.
2. How to clean the water container
 - Fill the water container with 200ml of water.
 - Operate the product once.
 - Dispose the water.
3. Please use tap water only
4. Please fill at least 200ml of water when using the product.
5. Battery Indicator : If the LED light keeps blinking in red and a buzzer alarms, it means the battery is only 20%.
6. USB cable : DC5V, 1~2A (USB micro 5-pin)

Safety Precautions



Use the USB cable enclosed.



Do not touch the connection part of USB cable with wet hand as there is a risk of electric shock.



Check if water leaks during the operation.
Do not use the product without water.



Do not place any heavy object on top of the product and please place it on a flat surface.

* If the product makes abnormal sound, smells, heat, or smoke, immediately stop the uses and contact CUCKOO customer center.

Safety precautions

Prohibition

1. Do not drink (it is not drinking water)
2. Do not spray on the face
3. Do not spray on a person's face (respiratory organs) or a pet
4. Do not use as water for humidifiers
5. Do not use for medical purposes on pets (Do not use for pet skin disease or wipe tears)
6. Do not use in a place where it is high humidity, wetness, or easily freezing
7. Do not keep in a place where it is direct sunlight, high temperature, firearms, or high humidity.
8. Use common tap water with temperature between 5 °C and 35°C
9. Do not use underground water, contaminated water, or purified water
10. Using with non-specified power and voltage may cause a malfunction
11. Do not use in confined space and make sure to use in well-ventilated place
12. Do not use around heaters and firearms
13. Do not store in a water bottle or in a refrigerator. It can be confused with drinking water.
14. Do not disassemble or modify the instrument.
15. Be sure to install the product horizontally and do not move the product while it is operating
16. Be cautious about discoloring or deforming when used in textiles, leather, or metal.
17. Wear a mask when using.
18. Be cautious about inhaling into the eyes and respiratory organ when spray into the air
19. This device is not intended for use by people who lack physical, sensory or mental abilities, or lack experience and knowledge, who cannot use the device safely without supervision or instruction. (Be cautious not to let children play with devices.)
20. It may cause the deterioration of the device when store the long period
21. Do not use foreign substances other than water. It may causes the failure.

Risks

1. After using disinfectant solution, rinse with dry or clean water.
2. If the customer disassembles, repairs, modifications, or assembles this product, they will not receive 'After Service' for free.
3. If you soak device into the water, it will cause breakdown and damage.
4. Keep out device from children, infants, or pets.
5. Do not use in chemical storage or a place where the gas is generated
6. Do not use the device while plug, wires, or USB cable is damaged
7. Do not leave the device in the vehicle (in high temperature)
8. Make sure to check leakage before carrying it in your bag
9. Do not drink or inhale on purpose. (If you have inhaled or drunk a significant volume, make sure to be treated by a doctor)
10. Don't spray it on your eyes. If disinfectant solution has gotten into the eye, rinse immediately with plenty of water and seek medical attention if necessary.
11. Wash your hands after using. Avoid contact with sensitive or injured skin.
12. There is an air outlet in the neck of the sprayer, which may cause leakage if it is flipped over or tilted excessively.
13. Do not store disinfectant solution in a water bottle or in a refrigerator.

Precautions during use

1. Make sure to use tap water.

When operating the product with no water or purified water, a buzzer alarms and the red-colored and blue-colored lamp flickers 5 times. This is an alert for the absence of water or incorrect use of water so make sure to use tap water.

2. Charge it for at least 1 hour prior to use.

When reusing the product while it is completely discharged, it must be charged for at least 1 hour before it can properly operate (time needed for a full charge when it is completely discharged: 3-4 hours).

3. Clean the electrode part about once a month (to remove scale).

After using it for over a specific period of time, scale adheres to the electrode part, which reduces the sterilization capability. Make sure to remove scale on the electrode part about once a month (refer to "Product Management Method" on how to clean scale).

4. Do not operate the product for 3 or more consecutive times.

Do not operate the product for 3 or more consecutive times in the non-sprayed state. It may cause a malfunction.

5. Do not turn the spray by force.

When locking the spray on the water container, do not turn with an excessive force. The part on which the spray location is fixed may be worn.

To use the product for a long period of time without a malfunction, make sure to read the "User Manual" prior to use.

Product description and benefits

Product description

The Disinfectant Solution Generator without chemicals can sterilize and deodorize our daily lives quickly and easily with more than 99.9% sterilization power through sterilized water(HOCl) harmless to the human body made of tap water.

※Test conditions (testing agency: Korean Environment & Waterworks Institute)

Experimental group

1. Pour tap water into the Disinfectant Solution Generator provided, operate the product and spray it on a beaker to fill 20ml of sterilized water
2. Pour 200ml of prepared test sample into the sterilized water in the beaker and mix them for 30 seconds to analyze

Control group

1. Pour purified water into the specimen(spray) provided and spray it on a beaker to fill 20ml of purified water
2. Pour 200ml of prepared test sample into the purifier water in the beaker and mix them for 30 seconds to analyze

Benefits

Sterilization : Sterilizes more than 99.9% of germs (Klebsiella pneumoniae and 3 other species)

Deodorization : Removes odor when you wipe it off with tissue or cloth where it smells

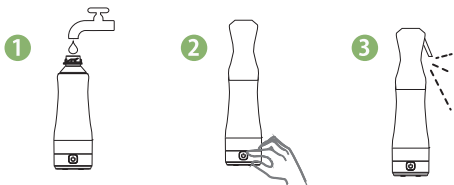
Cleansing : Easy to clean when spot or dirt on the surface of an object

Removal of residual pesticide : Effective in removing residual pesticide on the surface of fruits and vegetables

How to use Disinfectant Solution Generator

How to use

1. Pour 250ml of tap water
2. Press the power button once, and disinfectant solution is generated for 3 minutes (LOW-Blue LED On)
3. If pressed power button once more, disinfectant solution is generated for 6 minutes (HIGH-Please press power button up to 2 times)
4. During disinfectant solution generation, bubbles are generated.
5. To turn off disinfectant water generation while it is being generated, please press power button and hold.
6. When LED lamp turns off, disinfectant solution generation is completed. User is ok to use it.



1. The period of use for disinfectant solution is up to 24 hours. (at ambient temperature)
2. Discard disinfectant solution that was made previous day. Please use fresh tap water on the day of its use.

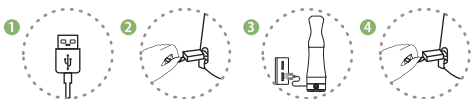
(Precautions)

- Over production in high density of disinfectant solution generation will cause rise in internal pressure which may result in malfunction of the device.
- Make sure to pour tap water up to 250ml or less marked on the water container.

How to charge Disinfectant Solution Generator

How to charge

1. Connect the USB cable
2. Connect the adapter on the connection part at the bottom of the main body
3. It can be used with adapter connected while being charged
4. The red LED lamp is off when charge is completed
5. Disconnect the cable and seal it with USB cap



Charge the device when fully discharged with 3 times buzzer sounds and red LED flickers. With complete discharged, it will require 3~4 hours to fully charge.

* Make sure to check there is no remaining water on the USB socket or main body of the device when charging the device.

(Precautions)

The USB cable enclosed is compatible with USB charging adapters for smartphones, computer and vehicles. However, the charging time will take longer when charging with computer USB port

How to manage product

Maintenance and Management

Do not keep water inside of sprayer for a long time. If it is not using for a long time, completely dry inside of product and store it in place out of moisture and sunlight. If the product is stored at low temperature, it may cause malfunction.

Exterior cleaning

Wipe the exterior of the product with dry cloth. Do not use any chemical or detergent. Make sure not to let water go inside the connection part of water container and the main body. If it is wet, wipe it off and dry it completely.

Interior cleaning

Do not separate the electrode part from main body or wipe it off with excessive force. If fur created by containing water for awhile, be cautious not to put excessive force on the electrode part and wipe it with dry cloth before rinsing it with tap water.

Scale cleaning

If white scale is observed on the electrode part, pour 200ml of warm water with 20g of citric acid (purchase separately) or 100ml of water with 100ml of vinegar and leave it for over 1 hour to automatically cleanse the electrode. White scale is a lime contained in tap water.

-Do not use detergent or organic solvent / Do not use cleansing brush, scrub brush, etc.

-Do not cleaning with other product or dishes

Various use

1. Furniture, leather, woven goods, etc. in need of sterilization

Spray it evenly and wash The surface with clean water after 5 minutes

2. Sterilization of pet supplies

Put disinfectant solution water on a soft cotton cloth and wash it with clean water after 5 minutes

3. Sterilization of oral supplementary products such as braces

Fill the container with disinfectant water, place the products in and wash it after 5 minutes

4. Sterilization of leaves and stems of plants

Spray it evenly and wash The surface with clean water after 5 minutes

5. Car and supplies cleaning

Spray it evenly and wipe the disinfectant solution water with a clean cotton cloth after 5 minutes

6. Daily Supplies

Fill the container with disinfectant water, place the supplies such as comb, brushes, clippers and beauty products in and wash it with clean water after 5 minutes

7. Livingroom

Put Disinfectant Solution water on a colth and wipe the surface to make it sterilized

8. Kitchen

Spray it evenly on your tablewares and wash out the Disinfectant Solution water with clean water after 5 minutes

9. Bathroom

Fill the container with disinfectant solution water and put the supplies in it or spray the solution water and wash out it with clean water after 5 minutes.

CUCKOO

WWW.CUCKOOWORLD.COM

If you provide us accurate information including the product model name, conditions of malfunction and contact details, we will always offer friendly and kind consultation and speedy service for any difficulties, complaints, suggestions and/or proposals you may have.

- After reading the manual, make sure to keep it where those who use the product will be able to access at all times.
- The product warranty is included in the user manual.
- Note: Make sure to read the user manual if you wish to be able to use the product for a long period of time without any malfunction.