

INSTALL/REMOVAL INSTRUCTIONS: IGNITION LOCK CYLINDER

ATTENTION: Refer to the appropriate shop manual for your vehicle to obtain specific service procedures for this part. If you do not have a service manual or lack the skill to install this part, it is recommended that you seek the services of a qualified technician. Pay special attention to all cautions and warnings included in the shop manual. Read and follow all instructions carefully.

REMOVAL/INSTALL OF IGNITION LOCK CYLINDER (989-714) Ford F150 2004

General Tech Tips:

- This lock cylinder kit consists of an ignition lock with keys and a programming tool. There are 3 keys provided in this kit; 2 transponder security keys and 1 non-transponder security key. The 2 transponder keys will need to be programmed to your car to avoid a no-start condition.

**PLEASE WEAR
SAFETY GLASSES!**

Removal Instructions

STEP 1: Disconnect battery.

STEP 2: Rotate lock cylinder to the run position.

STEP 3: Push a small screwdriver or small drift punch in hole in trim shroud under lock cylinder. Push retaining pin in while pulling on lock cylinder to remove from column.



Disclaimer:

Even though every attempt is made to ensure this information is complete and accurate, it is impossible to account for all possible circumstances or situations. Please consult with a qualified auto technician before attempting to perform any work you are not qualified to do. Automobiles can be hazardous to work on; be sure to take all necessary safety precautions. Failure to do so may result in property damage or personal injury. Certain motor vehicle standards and performance requirements may apply to your motor vehicle (such as Federal Motor Vehicle Safety Standards by the National Highway Traffic Safety Administration). Be sure that your work is performed in accordance with such standards and that you do not disable any motor vehicle safety feature.

©2018 Dorman Products, Inc.

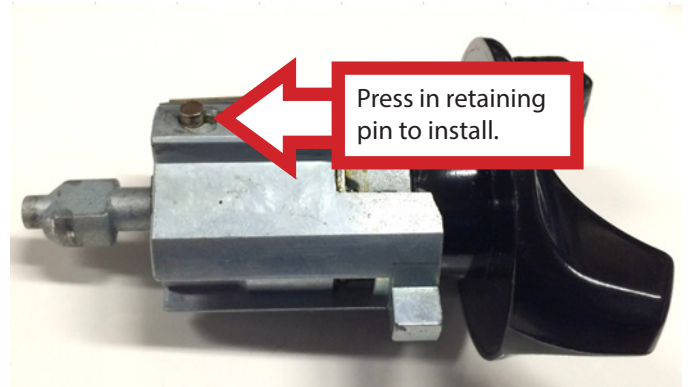
No reproductions in whole or in part without prior written approval.

INSTALL/REMOVAL INSTRUCTIONS: IGNITION LOCK CYLINDER

ATTENTION: Refer to the appropriate shop manual for your vehicle to obtain specific service procedures for this part. If you do not have a service manual or lack the skill to install this part, it is recommended that you seek the services of a qualified technician. Pay special attention to all cautions and warnings included in the shop manual. Read and follow all instructions carefully.

Installation Instructions

STEP 1: Install lock cylinder by rotating the new lock to the run position and pressing down on retaining pin.



STEP 2: Insert lock into column. Ensure that cylinder is fully seated and aligned in interlocking washer before turning key to the off position. This will enable the lock retaining pin to extend into cylinder housing.

STEP 3: Rotate new lock cylinder using key to ensure proper operation in all positions.

STEP 4: Reconnect battery.

Programming Procedure

STEP 1: Plug programmer into OBD2 port and wait for programmer to beep.



Disclaimer:

Even though every attempt is made to ensure this information is complete and accurate, it is impossible to account for all possible circumstances or situations. Please consult with a qualified auto technician before attempting to perform any work you are not qualified to do. Automobiles can be hazardous to work on; be sure to take all necessary safety precautions. Failure to do so may result in property damage or personal injury. Certain motor vehicle standards and performance requirements may apply to your motor vehicle (such as Federal Motor Vehicle Safety Standards by the National Highway Traffic Safety Administration). Be sure that your work is performed in accordance with such standards and that you do not disable any motor vehicle safety feature.

INSTALL/REMOVAL INSTRUCTIONS: IGNITION LOCK CYLINDER

ATTENTION: Refer to the appropriate shop manual for your vehicle to obtain specific service procedures for this part. If you do not have a service manual or lack the skill to install this part, it is recommended that you seek the services of a qualified technician. Pay special attention to all cautions and warnings included in the shop manual. Read and follow all instructions carefully.

STEP 2: Insert the non-transponder key into the new lock while simultaneously holding the original key up against the lock. Turn the key to the ON position without starting, and wait for programmer to beep.



TECH NOTE: Do not hold original key next column or ignition after step 3 as this will cause programming failure.

STEP 3: Re-insert first transponder key. Turn to ON position but do not start vehicle. Wait for programmer to beep.

STEP 4: Programmer will begin 10 minute security access wait, LED light on programmer will flash quickly during this time.

STEP 5: Programmer will beep twice when security access is attained; LED light on programmer will flash slowly at this time.

STEP 6: Immediately cycle key to "OFF" position, then to the "ON" position and back to the "OFF" position.

STEP 7: Remove key from ignition.

STEP 8: Wait 90 seconds until programmer beeps twice.

STEP 9: Re-insert first new transponder key and turn to "ON" position.

Disclaimer:

Even though every attempt is made to ensure this information is complete and accurate, it is impossible to account for all possible circumstances or situations. Please consult with a qualified auto technician before attempting to perform any work you are not qualified to do. Automobiles can be hazardous to work on; be sure to take all necessary safety precautions. Failure to do so may result in property damage or personal injury. Certain motor vehicle standards and performance requirements may apply to your motor vehicle (such as Federal Motor Vehicle Safety Standards by the National Highway Traffic Safety Administration). Be sure that your work is performed in accordance with such standards and that you do not disable any motor vehicle safety feature.

INSTALL/REMOVAL INSTRUCTIONS: IGNITION LOCK CYLINDER

ATTENTION: Refer to the appropriate shop manual for your vehicle to obtain specific service procedures for this part. If you do not have a service manual or lack the skill to install this part, it is recommended that you seek the services of a qualified technician. Pay special attention to all cautions and warnings included in the shop manual. Read and follow all instructions carefully.

STEP 10: The programmer will beep once to signal the first key has been programmed.

STEP 11: Remove key from ignition.

STEP 12: Insert second new transponder key and turn to "ON" position.

STEP 13: Programmer will beep 3 times to signal programming complete.

STEP 14: Unplug programmer, key programming is now complete.

**We appreciate your opinions regarding this product!
Please call our Technical Assistant with any challenges or suggestions
regarding the installation or operation of this product.**

1-800-523-2492

Disclaimer:

Even though every attempt is made to ensure this information is complete and accurate, it is impossible to account for all possible circumstances or situations. Please consult with a qualified auto technician before attempting to perform any work you are not qualified to do. Automobiles can be hazardous to work on; be sure to take all necessary safety precautions. Failure to do so may result in property damage or personal injury. Certain motor vehicle standards and performance requirements may apply to your motor vehicle (such as Federal Motor Vehicle Safety Standards by the National Highway Traffic Safety Administration). Be sure that your work is performed in accordance with such standards and that you do not disable any motor vehicle safety feature.

©2018 Dorman Products, Inc.

No reproductions in whole or in part without prior written approval.