

**FISHER & PAYKEL**

**ASSISTED OPENING ACCESSORY**

---

OPIN1, OPIN1EX1RSB,  
OPIN1EX1RSW & OPEX1 models

**USER GUIDE**  
**NZ AU SG UK IE**



## CONTENTS

---

Safety and warnings	4
Compatible models	5
Using assisted opening accessory	6
Maintenance	7
Troubleshooting	8
Adjust sensitivity	10
Adjust mode	11
Warranty and service	12
Waste Electrical and Electronic Equipment information	13

---

### Registration

To register your product visit our website: [fisherpaykel.com/register](https://fisherpaykel.com/register)

### READ AND SAVE THIS GUIDE

When using your Assisted Opening Accessory, follow basic precautions, including the following:

#### General

- This product is not intended for use by person (including children under the age of 8) with reduced physical sensory or mental Capabilities, or lack of experience of knowledge, unless they have been given supervision or instruction concerning use of the product and the hazards involved by a person responsible for their safety.
- Young children should be supervised to ensure they do not play with the product.
- Cleaning and user maintenance shall not be made by children without supervision.
- Ensure that dimensions or product vs. dimensions in the alcove are clear.
  - Dimensions of space.
  - Dimensions and position of means of supporting and fixing.
  - Minimum distance between appliance and surroundings.
  - Minimum dimensions of ventilation openings and their correct arrangement.
  - Connection of the appliance to the supply mains and interconnection of separate components.
  - Necessity to provide disconnection from mains with an accessible plug or accessible switch in the fixed wiring in accordance with local wiring rules.
- For current details about model and specification availability in your country, go to our website [fisherpaykel.com](http://fisherpaykel.com) or contact your local Fisher & Paykel dealer.
- The product must be installed by a qualified installer, or Fisher & Paykel trained and supported service technician to avoid faulty electrical connections.
- All connections for electrical power and grounding must comply with local codes and ordinances and be made by licensed personnel when required.
- Check the power supply. Ensure that there is a separate power outlet for the product. Avoid sharing the power point with other appliances to prevent the appliance from accidentally switching off.
- For power requirements, refer to the information on the serial plate. Connect the product to a supply (220-240 V, 50 Hz) with fitted power cord. We recommend using an isolating switch that is easily accessible to the user after the product is installed.
- Follow the national electrical codes and all other local codes and ordinances when installing this product.

### WARNING!

To reduce the risk associated with choking:

**DO NOT** allow children under 3 years of age to have access to small parts during the installation of the Assisted Opening Accessory.

The product contains a strong permanent magnet which could cause interference with cardiac pacemakers, implanted defibrillator's (ICDs) and other implants. Always maintain a distance of at least 10cm/4" between the actuator head and cardiac pacemakers, implanted defibrillator's (ICDs) and other implant.

## COMPATIBLE MODELS

<b>ASSISTED OPENING ACCESSORY KIT</b>	<b>COMPATIBLE MODELS</b>
<b>OPEX1</b>  (Contains 868305 Assisted Opening Accessory - quantity 1)	RS4621F, RS6121F, RS6121S, RS6121V, RS7621F, RS7621S, DD60STX611, RB9064S
<b>OPIN1EX1RSW</b>  (Contains 868305 Assisted Opening Accessory - quantity 2)	RS6121W, RS7621W
<b>OPIN1EX1RSB</b>  (Contains 868305 Assisted Opening Accessory - quantity 2)	RS6019B
<b>OPIN1</b>  (Contains 868305 or 864750 Assisted Opening Accessory - quantity 1)	RS6019F, RS6019S

## USING ASSISTED OPENING ACCESSORY

---



### Push door

Push the door to open slightly. The door will remain ajar for four seconds. If left ajar, the door will automatically close again after four seconds.

Pull door to open fully.



### Push handle

If handles are fitted, gently push the handle to open slightly. The door will remain ajar for four seconds. If left ajar, the door will automatically close again after four seconds.

Pull door to open fully.



### Knock to open (DishDrawer™ only)

For optimal use knock on the door twice to open drawer slightly. We recommend knocking in the area shown.

The door will remain ajar for four seconds. If left ajar, the door will automatically close again after four seconds.

Pull door to open fully.

## MAINTENANCE

---



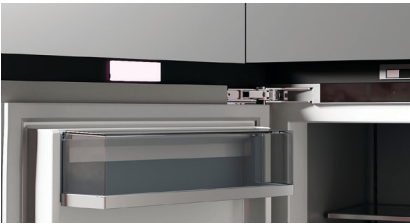
### **Lens**

Keep lens free of dust.



### **Gasket**

Wash regularly using a damp cloth and dishwashing liquid.



### **Striker cover**

Keep striker cover free of dust.

## TROUBLESHOOTING

PROBLEM	POSSIBLE CAUSES	WHAT TO DO
Door is opening unexpectedly	Sensitivity may be too high	These false triggers may be reduced by lowering the sensitivity setting. Refer to page 10 for details.
Door opens slightly, then closes immediately	The door opening force may be too high	Wait 20 seconds and try again. It is normal for large doors to be hard to open for a short time after closing due to a vacuum created in the product.
	There may be an obstruction preventing the door from opening or closing correctly	Check for obstructions and remove if present.
	Door gasket may need cleaned	Wash gasket using a damp cloth and dishwashing liquid.  Power may need to be reset to your Assisted Opening Accessory unit.
Door immediately reopens after closing	Door movement within one second after door has closed.	Ensure the product is secure. If the issue persists, refer to 'Adjust sensitivity'.
Door is not opening	Deactivated mode may be selected.	The mode may be set to Deactivated. Change this to the desired setting. Refer to page 11 for details.
	Sensitivity may be too low	Increasing the sensitivity will help detect soft pushes, refer to 10 for details.
	Incorrect use	Push door with deliberate force to ensure the Assisted Opening Accessory does not register the touch as a false trigger. Refer to page 6 for details.
	There is no door gap	The door should not be hard against cabinetry or movement can't be detected. Refer to installation guide.  Power may need to be reset to your Assisted Opening Accessory unit.
	Striker plate may be misaligned	Refer to installation guide for striker plate location.
	Door gap is too large	Refer to installation guide for alignment guidance.

## TROUBLESHOOTING

PROBLEM	POSSIBLE CAUSES	WHAT TO DO
<b>Door is not closing</b>	Mode has been incorrectly set*	Ensure mode has been correctly set. Setting the accessory to <b>DRAWER MODE</b> may resolve.
	Drawer may be catching on surrounding cabinetry*	Check product is level and opens and closes smoothly. Adjust position in cavity as required.
	Drawer may not be correctly sitting on runners*	Check product opens and closes smoothly. Refer to installation guide for guidance on locking the drawer onto the runners correctly.
	Product may not be level*	Check product is level and adjust as required.
	Striker plate may be misaligned or missing**	Refer to the installation guide for guidance around fitting the striker plate.
<b>Power failure</b>	The actuator head is remaining in the extended position	Gently push the door/drawer closed, this will drive the actuator head back in.

\*Drawer installs only.

\*\*Applies to all models using Assisted Opening Accessory.

## ADJUST SENSITIVITY

---

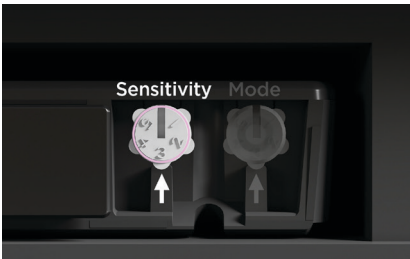
### Sensitivity

The **SENSITIVITY** dial can be used to adjust the push/pull sensitivity of your Assisted Opening Accessory. Your accessory is set to 3 by default and should only be adjusted if required. The sensitivity cannot be adjusted on DishDrawer™ installations.



### Remove lens cover

Pull lens cover towards you to remove. If required, a screwdriver may be used to loosen the cover.



### Adjust sensitivity

Rotate the dial using a flat-bladed screwdriver until the desired setting is selected.

Setting 1 is the least sensitive and 5 is the most sensitive.

# ADJUST MODE

## Mode

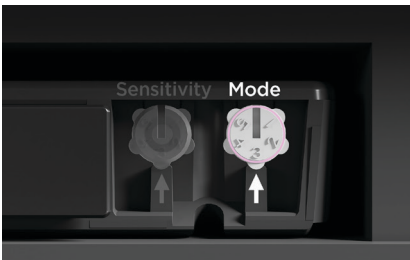
The **MODE** dial can be used to adjust the overall use settings of your Assisted Opening Accessory. The mode will be automatically set to **DRAWER** for DishDrawer™ installations and cannot be adjusted.

MODE	DESCRIPTION
1 - DEACTIVATED	Prevents the Assisted Opening Accessory from operating during installation. Your Accessory will not operate if left in this setting.
2 - SMALL OPENING	Recommended for all hinged door installations. Sets the opening distance to its minimum.*
3 & 4 - LARGE OPENING	Recommended for all hinged door installations. Sets the opening distance to its maximum.*
5 - DRAWER	Sets the opening distance to its maximum.* Required for all drawer installations.



### Remove lens cover

Pull lens cover towards you to remove. If required, a screwdriver may be used to loosen the cover.



### Adjust mode

Rotate the dial using a flat-bladed screwdriver until the desired setting is selected.

\*Opening distance will vary depending on custom panel thickness and the position of the Assisted Opening Accessory in the cavity.

## WARRANTY AND SERVICE

---

### NZ



#### To access your Warranty and Service Guide

Scan the QR code with your smartphone to access your warranty and book a service, or view online at <https://www.fisherpaykel.com/nz/help-and-support/warranty-information>

### AU



#### To access your Warranty and Service Guide

Scan the QR code with your smartphone to access your warranty and book a service, refer to your separate warranty and service book or view online at <https://www.fisherpaykel.com/au/help-and-support/warranty-information>

This product has been designed for use in a domestic (residential) environment. This product is not designed for any commercial use. Any commercial use by the customer will affect this products Manufacturer's Warranty.

#### Complete and keep for safe reference:

Model \_\_\_\_\_

Serial No. \_\_\_\_\_

Purchase Date \_\_\_\_\_

Purchaser \_\_\_\_\_

Dealer \_\_\_\_\_

Suburb \_\_\_\_\_

Town \_\_\_\_\_


Country \_\_\_\_\_

## WASTE ELECTRICAL AND ELECTRONIC EQUIPMENT INFORMATION

---

This appliance is marked according to the European directive 2012/19/EU and UK The Waste Electrical and Electronic Equipment Regulations 2013. By ensuring this product is disposed of correctly, you will help prevent potential negative consequences for the environment and human health, which could otherwise be caused by inappropriate waste handling of this product.



The symbol  on the product, or on the documents accompanying the product, indicates that this appliance may not be treated as household waste. Instead it shall be handed over to the applicable collection point for the recycling of electrical and electronic equipment. Disposal must be carried out in accordance with local environmental regulations for waste disposal. For more detailed information about treatment, recovery and recycling of this product, please contact your local city office, your household waste disposal service or the shop where you purchased the product.

**FISHERPAYKEL.COM**

© Fisher & Paykel Appliances 2023. All rights reserved.

The models shown in this guide may not be available in all markets and are subject to change at any time.

The product specifications in this guide apply to the specific products and models described at the date of issue. Under our policy of continuous product improvement, these specifications may change at any time.

For current details about model and specification availability in your country, please go to our website or contact your local Fisher & Paykel dealer.

**592956B 11.23**