

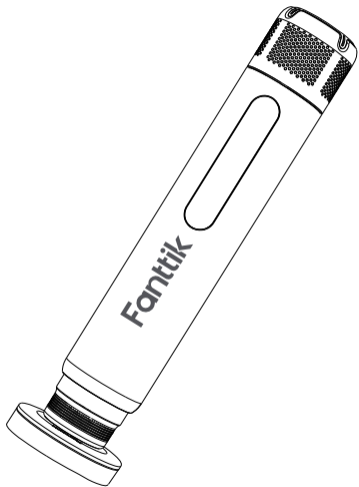
Fanttik

P10 PRO

PORTABLE CAR POLISHER

User Manual

Read this manual carefully before use and keep it for future reference.



Contents

| | |
|--------------------------------------|----|
| 1.SAFETY INSTRUCTIONS | 02 |
| 2.PRODUCT OVERVIEW | 04 |
| 3.PACKAGE CONTENTS | 05 |
| 4.BATTERY LEVEL INDICATOR & CHARGING | 06 |
| 5.FUNCTIONS AND OPERATIONS | 07 |
| 6.SPECIFICATIONS | 12 |
| 7.TROUBLESHOOTING | 13 |

1. SAFETY INSTRUCTIONS

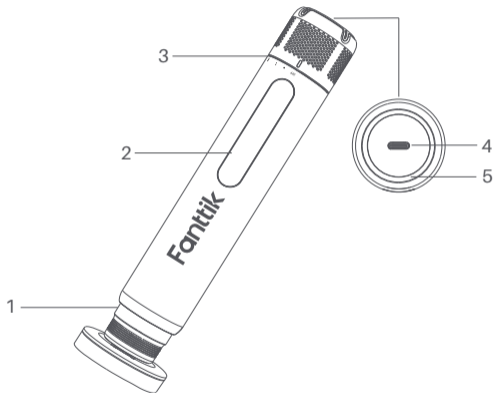
- This product is not a toy and is prohibited for children. The recommended user age is above 18 years old.
- Keep hair, loose clothing, jewelry and other items away from the polishing disc when using the product.
- The appropriate car wax should be selected in conjunction with this product and the car.
- The product contains a non-removable lithium-ion battery. Do not throw the product into a fire or dispose of it arbitrarily. Overheating, impacting, or submerging the lithium-ion battery poses risks of fire, spontaneous combustion, and explosion. Please avoid exposing it to high-temperature environments such as inside vehicles.
- The storage temperature of the product should not be below -10°C or above 45°C. Excessive cold or heat can shorten the product's lifespan and damage the battery.
- Do not disassemble, hit, squeeze, or cut the battery; otherwise, it may explode.
- Do not place the battery at extremely low pressure; otherwise, the battery may explode or leak flammable liquids and gases.
- If the battery is severely expanded, do not continue to use.
- Do not swallow the battery, otherwise it may cause chemical burns.
- If you think the battery may have been swallowed or placed in any part of your body, seek medical attention immediately.
- Please do not throw the battery into the domestic waste for disposal, and please comply with the

corresponding national regulations to safely dispose of the used battery.

- Long-term idling of the product may damage the battery. It is recommended to charge it at least once every three months.
- If abnormal sounds or excessive temperature are detected during operation, please immediately turn off the power.
- Use in a dry and clean environment. The ingress of dirt and dust may cause product damage. The product is not waterproof, and rinsing with water is prohibited.
- Please use a safe and compliant adapter and original charging cable to charge this product. Faults caused by not following these instructions are not covered by the warranty.

2.PRODUCT OVERVIEW

- 1.Quick release parts
- 2.Gear indicator light
- 3.Knob switch
- 4.Charging port
- 5.Battery indicator



3. CONTENTS



P10 Pro cordless
car polisher x 1



2" Polishing
Sponge x 3



3" Polishing
Sponge x 2
(deep orange)



3" Polishing
Sponge x 1
(light orange)



Shaped Polishing
Sponge x 2



3" Sandpaper
x 3



2" Velcro
Base x 1



2" Nylon Cleaning
Brush x 1



C-C
Cable x 1



3" Velcro
Base x 1

4. BATTERY LEVEL INDICATOR & CHARGING

Red



between 0%
and 15%

Orange



between 15%
and 30%

Green



between 30%
and 100%

Battery Level Indicator

Red light flashing = below 10%

Red light steady on = between 10% and 15%

Orange light steady on = between 15% and 30%

Green light steady on = between 30% and 100%

Charging

Please fully charge before first use. Use a charging cable to connect a 5V/3A.

USB adapter to the polisher for charging.

Fully charge the polisher before using it for the first time.

Green

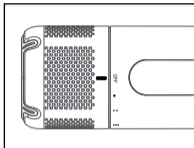


While charging:

The indicator will blink green slowly. When the battery is fully charged, the indicator will display solid green.

- **Tips:** You need to purchase a safe and compliant adapter yourself.

5. FUNCTIONS AND OPERATIONS



On

Rotate the knob from the "OFF" position through three gear settings to progressively increase the speed.

Off

Rotate any gear counterclockwise to "OFF" and the device will shut down.

Gear Usage Guide

1st Gear (Low Speed) Recommended Applications:

Used with nylon brush for cleaning exhaust pipes and standard aluminum alloy wheels

2nd Gear (Medium Speed) Recommended Applications:

Use a medium-hard sponge pad (light orange) to polish minor scratches and dings.

3rd Gear (High Speed) Recommended Applications:

Combined with a low-hardness polishing sponge (deep orange), it is used for the shiny surface treatment after polishing.

Note: When polishing, do not stay at the same spot for too long to avoid the temperature rising and damaging the paint surface. Always ensure proper pad/brush attachment before operation and allow the machine to cool between extended uses.

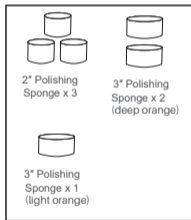
Selecting polishing accessory

Select the appropriate polishing accessory according to the purpose of use. Improper use may damage the polished surface. Please test the accessory in an inconspicuous place first.

Clean and dry the surface completely before operation.

There are two types of cutting available for the polishing sponge. The light orange one is of medium cut, while the deep orange one is of light cut.

Reference Applications



Polishing Sponge

Scenarios: car paint surface polishing, waxing.

Operation Steps:

1. Paste the polishing sponge to the Velcro, apply the polish or liquid wax directly to the car paint surface.
2. Start the polishing machine (gently stick to the paint surface to prevent dumping and splashing before turning on the machine) and move in a circle at a constant speed.
3. Wipe the residue with a soft cloth after polishing.

Note: The 3inch sponge pad is recommended to be used in conjunction with the second gear or higher.

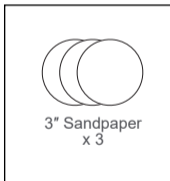


Shaped polishing sponge

Scenarios: emblems, air intake grilles, door handle recesses.

Operation Steps:

1. Apply a small amount of polishing paste with a sponge or finger directly to the dead center area (avoid contaminating the surrounding paint).
2. Install the shaped disk, turn on the machine and apply light pressure to the dead space with a point and click (keep the disk at the same angle as the gap).
3. Operate for no more than 10 seconds per spot to avoid overheating, and promptly clean up debris with a soft cloth.



Sandpaper

Scenario: localized shallow scratches, orange peel pre-treatment.

Operation Steps:

Wet construction: spray water mist on the sandpaper and paint surface first (keep wet to reduce friction damage).

Unidirectional sanding: Lightly sand in a straight line along the direction of the scratches (no drawing circles), check the progress every 30 seconds.

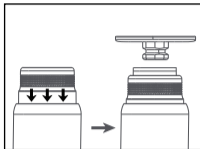
Cleaning verification: rinse out the sanding area, no bumpy feeling after fingertip touch, change the polishing disk to deal with it.

Note: When plastic parts such as lights or bumpers are used, the speed is reduced to a low gear to avoid high temperature deformation.



Nylon Cleaning Brush

Brushing technique: install the nylon brush and spot clean (avoid continuous rotation to damage the plating).



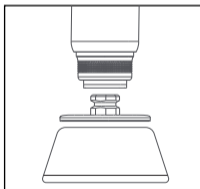
Accessory Installation and Replacement

Velcro Base Installation

Pull down the position shown in the diagram, align the polisher arbor with the Velcro base slot and release.

NOTE:

Make sure the base fits perfectly to avoid dislodging at high speeds. Still need to pull down to remove velcro base or brush.



Polishing sponge /Cleaning Brush Replacement

Flat sponge/ Shaped sponge/ Sandpaper: press directly to the Velcro base, make sure the fit is flat.

Brushes: Pull down and align the polisher arbor with the slot in the brush base.

6. SPECIFICATIONS

| | |
|------------------------------|---------------------------------------|
| Name | Fanttik P10 Pro portable car polisher |
| Model | P10 Pro |
| Item Dimensions | 205mm×38mm ×38mm |
| Max.Rotation Speed(Unloaded) | 950RPM |
| Troque | 1.6N.m±10% |
| Working Temperature | 0°C~45°C |
| Storage Temperature | -10°C~45°C |
| Battery Capacity | 4000mAh/3.6V |
| Input parameter | 5V/3A |
| Charging Port | USB Type-C |
| Charging Time | Less than 2.5 hours |
| Noise | < 65dB |

7. TROUBLESHOOTING

| Problems | Solutions |
|--|---|
| Polisher won't start | Check if battery is fully charged Confirm power switch is turned on |
| Machine overheating during use | Immediately stop using and let cool for 15 minutes Reduce speed setting and avoid applying excessive pressure |
| Uneven polishing results | Verify polishing compound is evenly applied Ensure polishing pad is clean without residue Maintain consistent movement speed, avoid lingering in one spot |
| Accessories becoming loose or detached | Power off and reinstall accessories Check if hook-and-loop backing is clean (dust affects adhesion) Ensure accessories are fully locked in place |
| New scratches appearing on surface | Stop use immediately Inspect polishing pad for embedded debris |
| Abnormal noise or vibration | Power off and check accessory installation Remove any foreign objects that may be caught Contact after-sales service if problem persists |
| High Temp Alert: Light strip flashes red (10 sec) Low Temp Alert: Light strip flashes blue (10 sec) | If the temperature exceeds the range, let the device cool at room temperature for one hour before use. |

WARRANTY

This product is covered by a 12-month limited warranty for manufacturing defects.

929-693-6066 MON-FRI 9AM-5PM (ET)

www.fanttik.com

support@fanttik.com

METASEE LLC

12 GREENWAY PLZ STE 1161A HOUSTON, TX 77046-1203

Made in China

CAN ICES(B)/NMB (B)

FC C E RoHS

