

**DESLAC®**

# Function Operation Manual

**VI50 Plus**

**SOLAR  
SMART LOCK  
WITH 3D FACE  
RECOGNITION**



# 1. Product Parameters

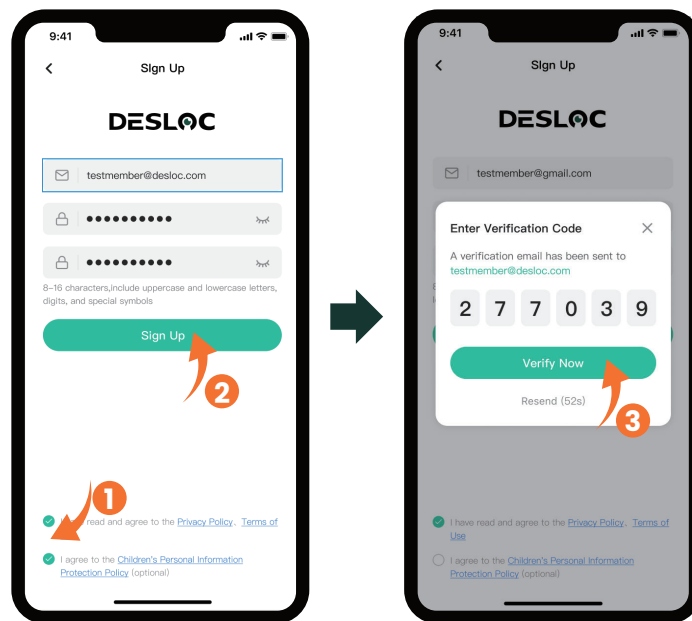
Battery Specifications	10,000mAh lithium battery (Actual capacity may vary from 9,600-10,000 mAh due to lithium battery characteristics.)
Solar Charging	5V pulsed input for charging or power supply supported under specific conditions
Unlocking Methods	3D facial recognition, fingerprint recognition, app, mechanical key
Face Entries	50 entries
Fingerprint Entries	50 entries

<01>

## 2. App Network Configuration

### 2.1 Owner Account Registration

Please download the DESLOC app before use



**Tips:**  
8-16 characters, include uppercase and lowercase letters, digits, and special symbols.  
Example: Asdf120!

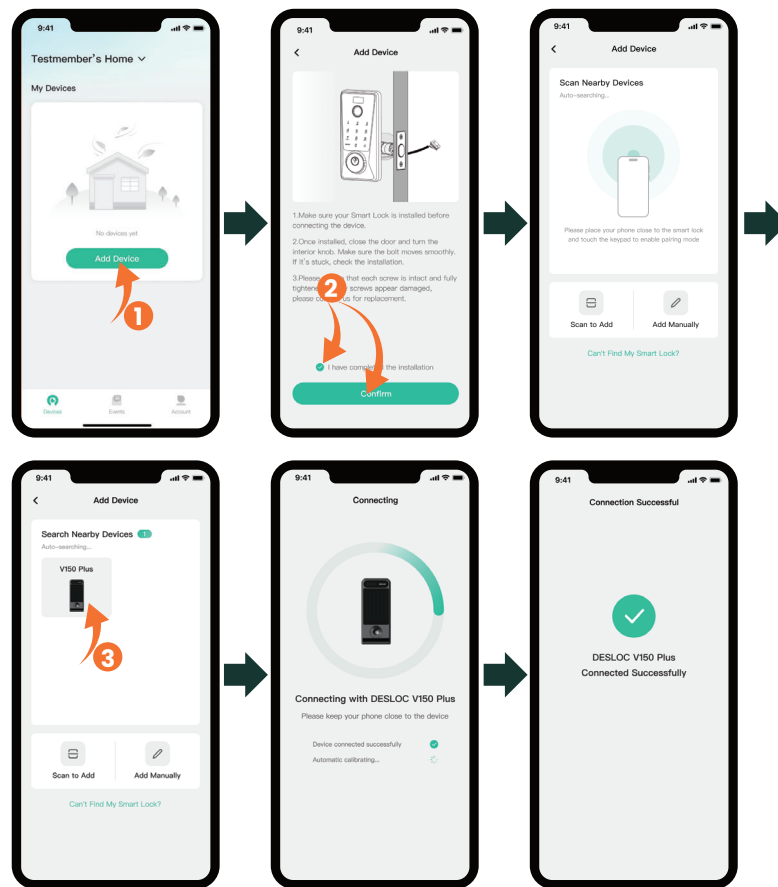
<02>

## 2.2 Add Device

There are three ways to add the device. Before connecting, activate the touch keypad.

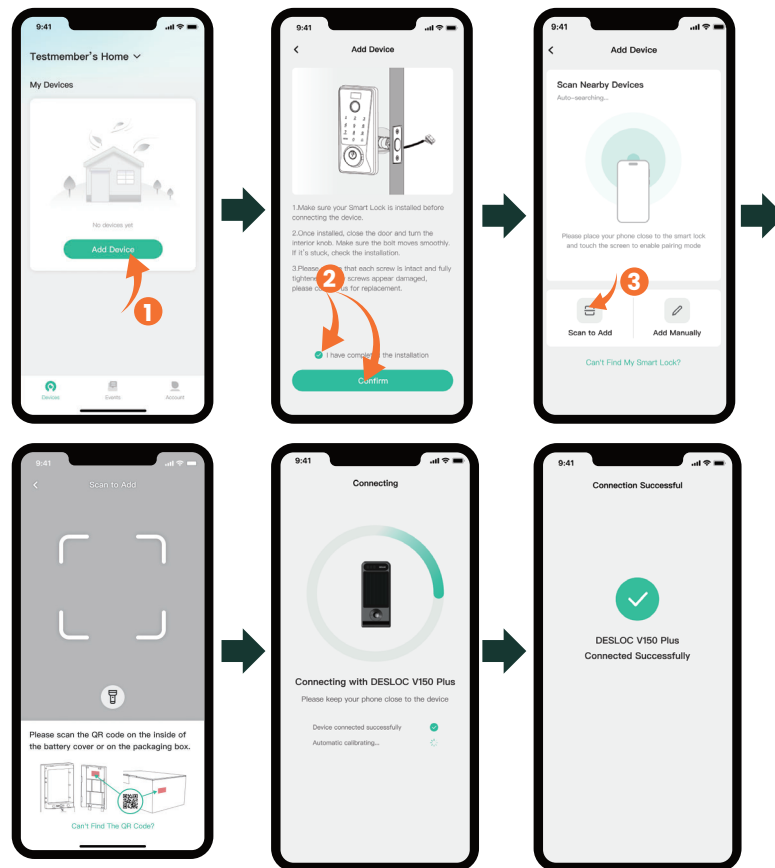
### Method 1: Bluetooth Connection

Make sure Bluetooth is enabled and is close to the device.



### Method 2: Scan to Add

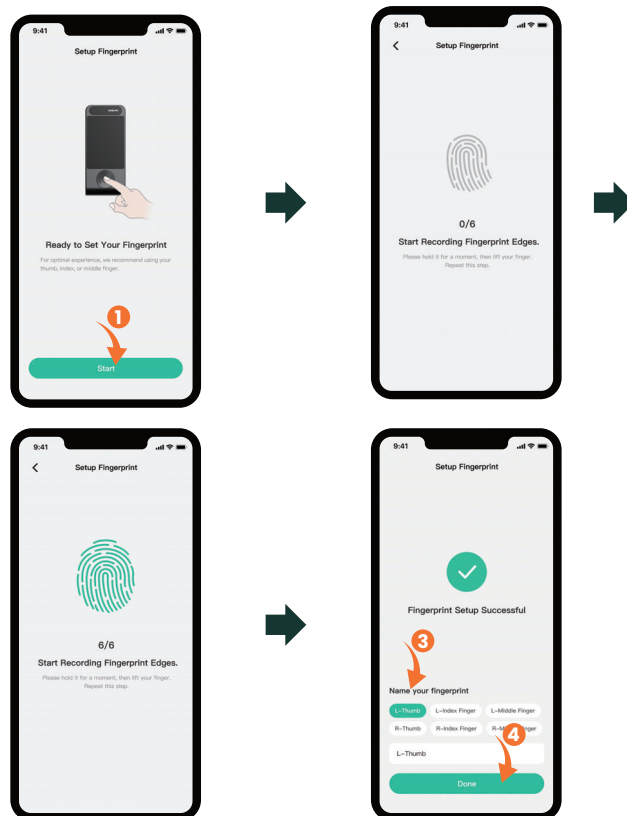
Please scan the QR code on the inside of the battery cover or on the packaging box to add.



### Method 3: Add Manually

Tap "Add Manually", then manually enter the SN code (located on the inside of the battery cover or on the packaging box) until "Connected Successfully" is prompted.

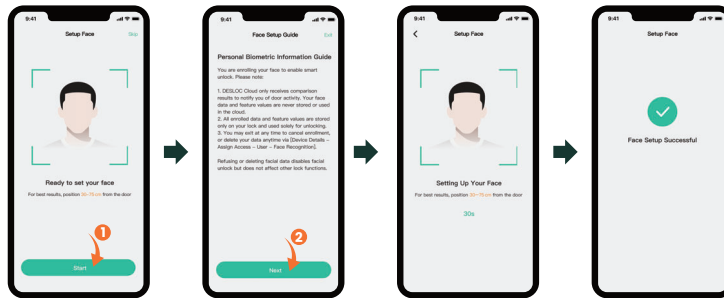
## 2.3 Owner Fingerprint Setting



**Tips:**

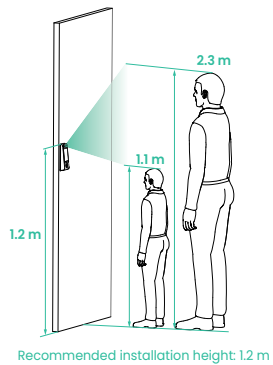
1. Wipe off the water stains and dust on the finger before entering the fingerprint, and it is recommended to give priority to the thumb, index finger, or middle finger.
2. You can also tap "Skip" and set up the fingerprint later via Devices > Enter the Device Window > Assign Access > Owner > Add Fingerprint.

## 2.4 Owner Face Setting

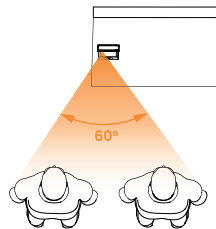


Face enrollment and unlocking require the following three conditions to be met simultaneously:

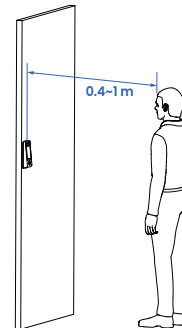
1. Vertical effective recognition range: 1.1–2.3 m.



2. Horizontal effective recognition angle:  $\leq 60^\circ$ .



3. Effective recognition distance range: 0.4–1.0 m.

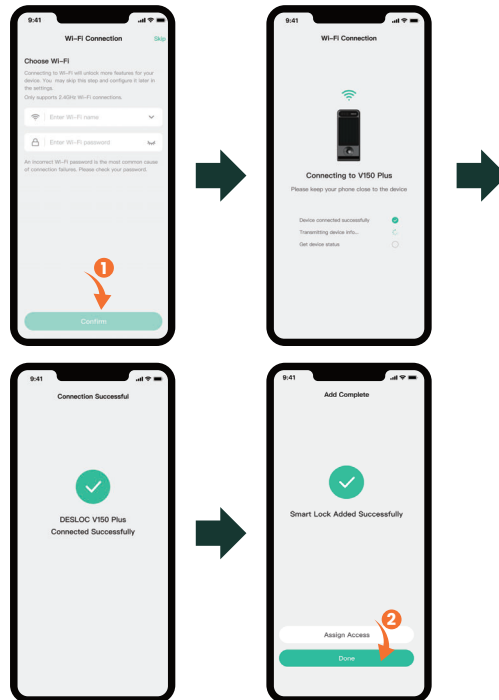


## 2.5 Wi-Fi Configuration

**For iOS:** The Wi-Fi name will be detected automatically (location authorization required).

**For Android:** Choose the Wi-Fi name from the drop-down list (location authorization required).

**For both systems:** Manual Wi-Fi name entry is also supported (no location authorization required).



### Tips:

1. Please connect to a 2.4 GHz Wi-Fi network.
2. Enable Location Services in Settings > Privacy > Location Services and allow DESLOC to access.
3. You can also tap "Skip" and configure Wi-Fi later via Devices > Enter the Device Window > Settings > General > Wi-Fi > Choose Wi-Fi.

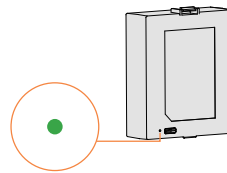
## 3. Instructions for Use

### 3.1 Battery Charging Reminder

The lithium battery is not fully charged; please fully charge it before use (Use Type-C chargers only).

The battery itself has an indicator that shows the following colors (indicated only during charging):

- Green light: Fully charged
- Red light: Charging in progress



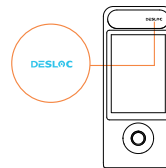
Optimal Charger:

- ✓ RECOMMENDED 5V/2A(5-7 hours)
- ✗ NOT RECOMMENDED 5V/1A(> 10 hours)
- ✗ Fast Charge: Not Supported

The exterior lock's battery level indicator will show the following colors:

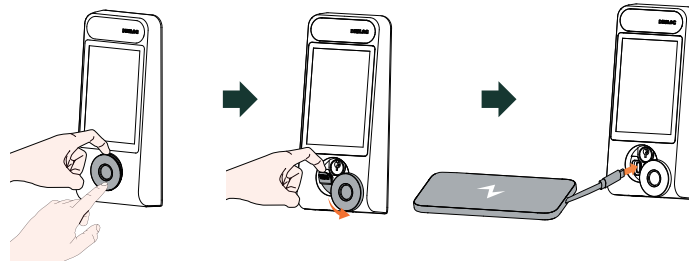
**DESLAC** Blue: Battery level > 10%

**DESLAC** Red: Battery level ≤ 10%



### 3.2 Emergency Charging Method

1. Press the lower side of the lock cylinder cover of the exterior lock, then pry the cover out from above.
2. Rotate the cover to one side and pry out the silicone plug from the charging port.
3. Insert a Type-C charging cable.



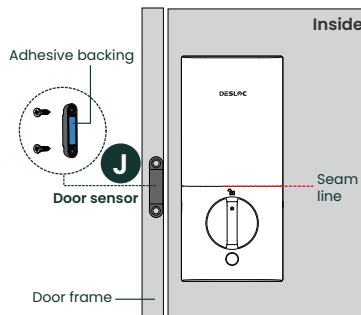
<08>

### 3.3 Installing the Door Sensor

**Step 1:** Determine the horizontal installation position. The door sensor should be flush with the edge of the door frame.

**Step 2:** Determine the vertical installation position. The door sensor should be vertically centered with the seam line between the battery cover and the interior lock (as shown by the red dashed line in the right figure).

**Step 3:** Once the position is determined, peel off the adhesive backing of the door sensor and stick it. If it does not adhere, you may choose to secure it with screws.



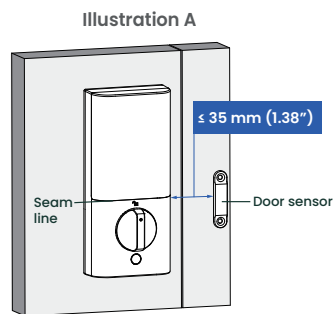
**Tips:**

The door sensor does not need to be installed if the auto-lock function is not used.

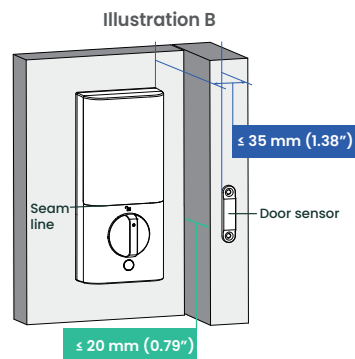
If the above illustrations do not match your door type, you can try adjusting according to the following two scenarios:

In all scenarios, during installation, ensure the center of the door sensor is approximately aligned vertically with the lower seam line of the battery cover.

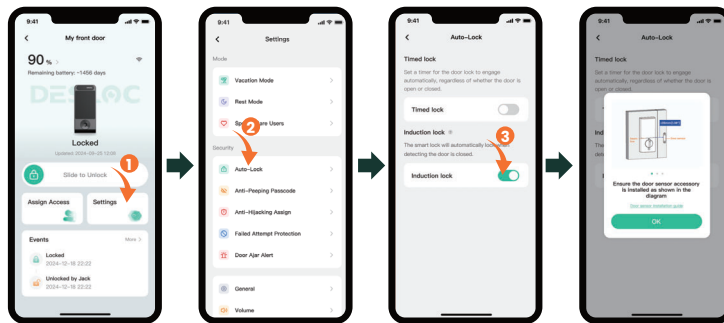
**Scenario A:** The horizontal gap between the door sensor and the interior lock is  $\leq 35$  mm (1.38"), as shown in Illustration A.



**Scenario B:** The horizontal gap between the door sensor and the interior lock is  $\leq 35$  mm (1.38"), and the interior/exterior depth offset is  $\leq 20$  mm (0.79"), as shown in Illustration B.



After installation, navigate to the Auto-Lock settings in the app and enable the "Induction lock" option. Next, perform a test by unlocking, opening, and closing the door to observe whether the smart lock engages automatically and confirm the setup is operational.



### 3.4 Unlocking Methods

#### Method 1: Fingerprint Unlocking

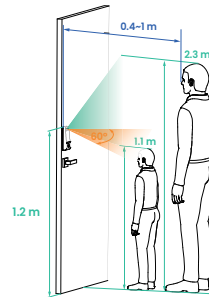
Place the enrolled finger on the fingerprint recognition area to unlock.



#### Method 2: 3D Face Unlocking

Face unlocking requires the following three conditions to be met simultaneously:

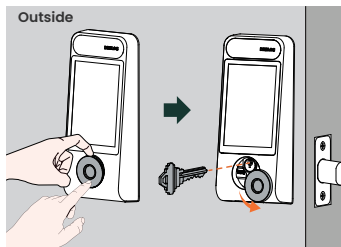
1. Vertical effective recognition range: 1.1–2.3 m.
2. Horizontal effective recognition angle:  $\leq 60^\circ$ .
3. Effective recognition distance range: 0.4–1.0 m.



Recommended installation height: 1.2 m

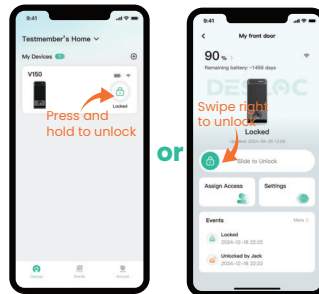
#### Method 3: Mechanical Key Unlocking

1. Press the lower side of the exterior lock's lock cylinder cover, then pry the cover out from above.
2. Rotate the cover to one side, insert the key, and turn it left or right to unlock.



#### Method 4: App Unlocking

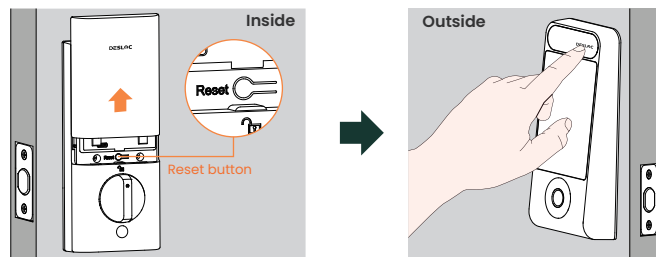
Press and hold or swipe right to unlock.



### 3.5 Factory Reset

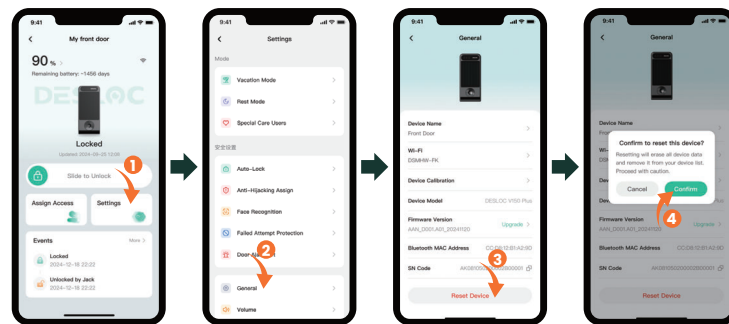
#### Method 1:

Remove the battery cover, press and hold the interior lock "Reset" key for more than 3 seconds, and press the exterior lock's "DESLOC Touch Button" to confirm.



#### Method 2:

Tap Settings > General > Reset Device > Confirm.

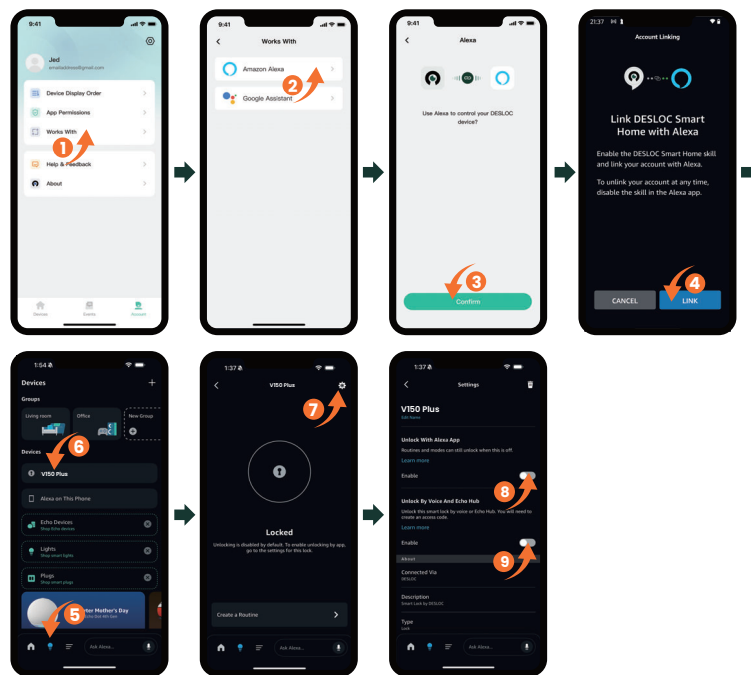


**Tips:**  
When restoring factory settings via the app, you need to be near the lock and maintain a Bluetooth connection. Otherwise, the lock may still be usable.



### 3.6 Third-party App Binding

#### a. How to connect the lock with Alexa



**Tips:**  
Ensure the Wi-Fi feature is enabled in this app (if not, the device will not support Alexa).

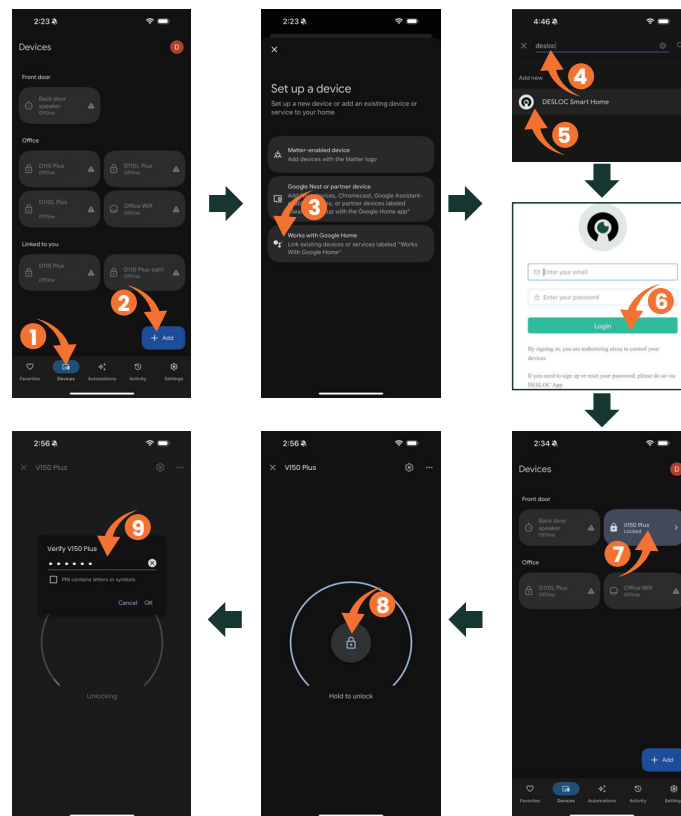


**b. How to connect the lock with Google Assistant**

**Step 1:** Install the Google Home app and tap "+".

**Step 2:** Search for DESLOC and authorize using your app account and password.

**Step 3:** Set a security code in this app to use it for unlocking via Google Home.



**Tips:**

1. Ensure the Wi-Fi feature is enabled in this app (if not, the device will not support Google Assistant).
2. Initial passcode is 123456.

## 4. Cautions and Statements

### 4.1 FCC Caution

This device complies with part 15 of the FCC Rules. Operation is subject to the following two conditions: (1) this device should not create harmful interference; (2) this device must be able to handle any interference it receives, even if it disrupts its operation. Any changes or modifications not expressly approved by the party responsible for compliance could void the user's authority to operate the equipment.

NOTE:

This device has been tested and found to comply with the limits for a Class B digital device, pursuant to part 15 of the FCC Rules. These limits are designed to provide reasonable protection against harmful interference in a residential installation. This device produces and emits radio frequency energy, and if not installed and operated as instructed, it could disrupt radio communications. However, there is no guarantee that interference will not occur in a particular installation. If this device results in interference to radio or television reception, which can be identified by power cycling the equipment, the user is advised to attempt to resolve the interference using the following steps:

- Reorient or relocate the receiving antenna.
- Increase the distance between the equipment and receiver.
- Connect the device to a circuit that is different from the one the receiver is using.
- Contact the dealer or an experienced radio/TV technician for help.

This device complies with FCC radiation exposure limits set forth for an uncontrolled environment. This device should be installed and operated with a minimum distance of 20 cm between the radiator and your body.

### 4.2 ISCED Statement

The device contains a licence-exempt transmitter(s)/receiver(s) that comply with Innovation, Science and Economic Development Canada's licence-exempt RSS(s). Operation is subject to the following two conditions: (1) this device may not cause interference; (2) this device must accept any interference, including interference that may cause undesired operation of the device.

This equipment complies with IC RSS-102 radiation exposure limits set forth for an uncontrolled environment.

The equipment complies with IC Radiation exposure limit set forth for uncontrolled environment. This equipment should be installed and operated with minimum distance 20 cm between the radiator and your body.

L'appareil contient des émetteurs/récepteurs exempts de licence qui sont conformes aux flux RSS exempts de licence d'innovation, sciences et développement économique Canada. Le fonctionnement est soumis aux deux conditions suivantes: (1) ce dispositif ne peut pas causer d'interférence; (2) ce dispositif doit accepter toute interférence, y compris l'interférence qui peut causer un fonctionnement indésirable du dispositif.

Cet équipement est conforme aux limites d'exposition au rayonnement IC RSS-102 établies pour un environnement non contrôlé.

L'équipement est conforme à la limite d'exposition au rayonnement IC établie pour l'environnement non contrôlé. Cet équipement doit être installé et utilisé avec une distance minimale de 20cm entre le radiateur et votre corps.

### 4.3 Copyright Notice

© 2025 Zhejiang Desman Intelligent Technology Co., LTD. All rights reserved.

No part of this document may be reproduced, transmitted, distributed, or stored in any form or by any means without the prior written consent of Zhejiang Desman Intelligent Technology Co., LTD. (hereinafter referred to as "Desman"). The products described herein may include software copyrighted by Desman and/or third parties. Unless explicitly authorized by the relevant rights holders, no individual or entity may reproduce, distribute, modify, extract, decompile, disassemble, decrypt, reverse engineer, rent, transfer, sublicense, or otherwise infringe upon the copyrights of any such software.

### 4.4 Trademark Notice

DESMANN, DESLOC, and DESLAC are trademarks or registered trademarks of Zhejiang Desman Intelligent Technology Co., LTD. and Hangzhou Key to the Future Technology Co., LTD. All other trademarks and company names mentioned in this document are the property of their respective owners.

### 4.5 About This Document

This document applies to multiple product models. Please refer to the actual item for the appearance and functionality.

The user shall bear any loss resulting from failure to follow the instructions in this document.

This document will be updated as needed in accordance with the laws and regulations of the relevant regions. For details, please refer to the product's printed materials, digital copy, QR code, or official website. In case of any discrepancy between the printed and electronic versions, the electronic version shall prevail.

Our company reserves the right to modify any information in this document at any time. All changes will be incorporated into the latest version without prior notice.

This document may contain technical inaccuracies, inconsistencies with product features or operation, or printing errors. The company's final interpretation shall apply.

If the downloaded PDF file cannot be opened, please use the latest version of a commonly used PDF reader.

### 4.6 Product Disclaimer

We (DESLAC) will not be liable for any of the following actions or circumstances.

The touch screen of this product is made of glass. If this product is dropped on a hard surface or subjected to a serious collision, the glass may break. To reduce the risk of being cut by glass fragments or cracks, do not touch or attempt to remove broken glass.

This product contains small parts that may pose a choking hazard to children under the age of 3. Please keep children away from these small parts.

The product may not work normally due to your own behavior or the malicious act of a third party or a low probability of quality problems. Do not attempt to gain access to the house through the window or break the door violently, which may lead to property damage or even personal damage. If you find this kind of situation, please put safety first and contact DESLOC after-sales team at support@desloc.com or its designated staff through other channels in time. DESLOC will offer technical support for you as soon as possible and provide you with a replacement if the lock cannot be repaired in time.

### 4.7 Solar Panel Precautions

1. Do not subject the solar panel to physical damage or impact; if damaged, dispose of it properly to prevent environmental and water contamination.

2. Keep away from high-temperature heat sources; do not incinerate. Operating and storage temperatures must not exceed 100 °C.