



Mini PC

User Manual

Contents

WARNING

- **UK** Protect the mini pc from being exposed to water or moisture.
- **DE** Schützen Sie den Mini-PC vor Wasser und Feuchtigkeit.
- **FR** Protégez le mini PC de l'exposition à l'eau ou à l'humidité.
- **IT** Proteggere il mini PC dall'esposizione ad acqua o umidità.
- **ES** Proteja la mini PC de la exposición al agua o la humedad.
- **NL** Bescherm de mini-pc tegen blootstelling aan water of vocht.
- **BE** Bescherm de mini-pc tegen blootstelling aan water of vocht.
- **TR** Mini bilgisayarınıza suya veya neme maruz kalmaktan koruyun.
- **SE** Skydda minidatorn från att utsättas för vatten eller fukt.



WARNING

- **INGESTION HAZARD:** This product contains a button cell or coin battery.
- **DEATH** or serious injury can occur if ingested.
- A swallowed button cell or coin battery can cause **Internal Chemical Burns** in as little as **2 hours**.
- **KEEP** new and used batteries **OUT OF REACH OF CHILDREN**
- **Seek immediate medical attention** if a battery is suspected to be swallowed or inserted inside any part of the body.



CR2032 Battery Safety Warning:

- a) **Safe Handling:** According to local regulations, depleted CR2032 batteries should be immediately removed and recycled or disposed of, and kept away from children. Do not discard the batteries in household waste or incinerate them.
- b) **Risk of Injury:** Even depleted CR2032 batteries can cause serious injury or even death if mishandled.
- c) **Emergency Assistance:** If accidental ingestion or any other emergency situation occurs, please call your local medical control center immediately for necessary treatment information.
- d) **Battery Type:** This product is only compatible with CR2032 type batteries.
- e) **Voltage Information:** The nominal voltage of a CR2032 battery is 3 volts.
- f) **Charging Warning:** CR2032 batteries are not rechargeable.
- g) **Prohibited Actions:** Do not forcibly discharge, recharge, disassemble, heat above the manufacturer's specified maximum temperature (usually 60°C), or incinerate. Improper handling may lead to battery venting, leakage, or explosion, causing personal injury and chemical burns.

Battery Statement:

This product contains a non-replaceable CR2032 button cell battery.
In accordance with local regulations, we remind consumers of the following:

The CR2032 battery inside this product should be removed by a professional and recycled or properly disposed of at the end of its service life.

Please ensure that the battery is kept out of reach of children and pets to prevent accidental ingestion.

Do not dispose of the battery with household waste or incinerate it.

We are committed to environmental protection and consumer safety.

Thank you for your understanding and cooperation.

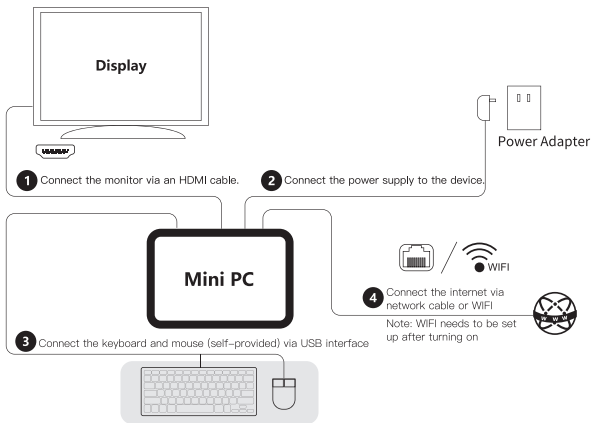
User Guide

Dear User: Thank you for using our product. For your safety and benefit, please carefully read this manual and all accompanying materials before using the product!

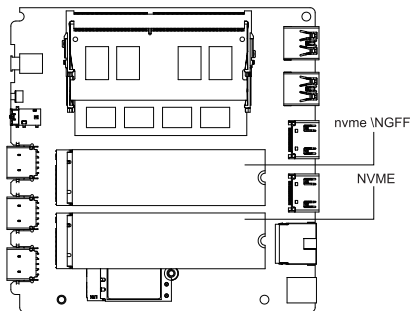
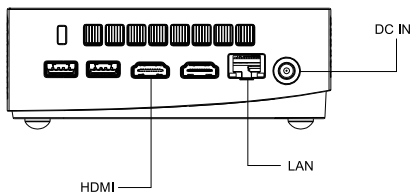
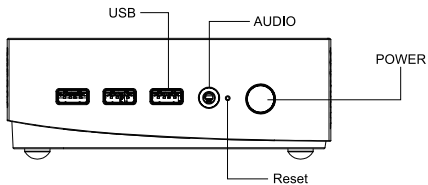
Disclaimer:

1. Please be sure to use the original power adapter. we assume no responsibility for any issues or malfunctions caused by the use of third-party adapters.
2. Users may use third-party music, video, images, and software, but we are not responsible for any copyright issues or software malfunctions.
3. If the product experiences a malfunction, we will strictly adhere to the warranty terms. However, we are not liable for any property damage or financial losses that may occur during use.
4. The device comes with pre-installed software, which can be used after actual testing. However, removing or not removing such software in cases of compatibility or other issues will not affect the machine. Please note that this is not a product quality issue.
5. We reserve the right to improve the product. In case of any changes in specifications or design, the actual product will prevail.
6. Please do not disassemble the product yourself. we assume no liability for damages caused by external physical or chemical damage unrelated to the product's quality.

Quick Installation



Schematic diagram of the product interface



Replace or install an M.2 SSD (Note: If you replace the new SSD, you need to reinstall the system)

Remove the pre-installed (if any) SSD from the connector in a counterclockwise direction with a screwdriver (as shown in Figure 1); Align the notch on the bottom of the new M.2 SSD with the bulge on the connector, then insert the bottom edge of the M.2 SSD into the connector (shown in Figure 2), and finally secure the M.2 SSD to the bracket with a screwdriver clockwise through the screws (shown in Figure 3).

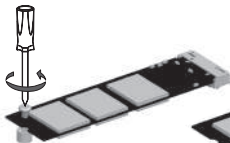


Figure 1

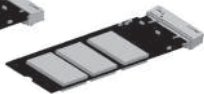


Figure 2

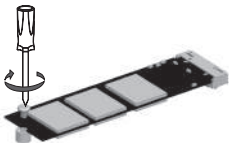
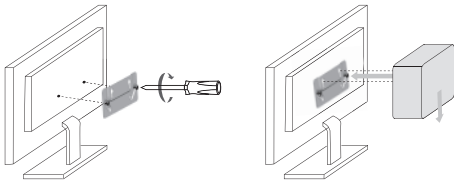


Figure 3

Installation of VESA bracket



Note: Some models do not support VESA mounts. Please refer to the actual product.

Tips and FAQ

1. Turn off your Mini PC

If your Mini PC does not respond, press the power button for at least (4–6) seconds until your Mini PC is turned off.

2. Boot into the system for the first time

- When you start-up your PC for the first time, you will be guided to configure your Windows operating system.

● Start-up your Mini PC for the first time: Press the PC's power button. Wait for a few minutes until the installation interface appears.

Step 1: Select language/country (region)

Step 2: Select the inputting method, and clicks confirm

Step 3: Select the second inputting method, which can be "skipped"

Step 4: Networking: After selecting wifi, enter password to connect it. Or choose to plug network cable for connection. (Networking will be updated automatically, and the update process will stay on an interface for a long time, which prolong the start-up time. (Skipping network connections is strongly recommended)

Step 5: Accept License Agreement

Step 6: Set User Name and Password Once the installation process is complete, the desktop will appear.

3. Connect WiFi

● Connect Wi-Fi. Connect PC to the Wi-Fi network using the following steps.

● Select the/icon  from the taskbar.

● Click the wifi icon to turn on the wi-fi.

● Select an access point in the list of available Wi-Fi connections. Select one of the connections to start the network connection.

Note: You may be prompted to enter a security key to activate a Wi-Fi connection.

4. Enter the BIOS setting

● The BIOS (Basic Input/ Output System) is the first software loaded when the Mini PC starts.

● Enter Bios: Click "Del" or "ESC" key.

● Under normal circumstances, the default BIOS settings apply in most cases to ensure optimum performance. Do not change the default BIOS settings. Except for the following situation. (You have installed new system components that require further BIOS settings or update.)

● Warning! Inappropriate BIOS settings may cause instability or startup failure. We strongly recommend that you can only change the BIOS settings with the help of technical service personnel.

Precautions

1. Be cautious when performing operations that may result in file damage or loss.

2. During use, ensure the device is protected from viruses and try to use antivirus software. If the mini PC will not be used for a long period, turn it off and disconnect the power supply.

3. Avoid turning the device on and off frequently within short periods. Ensure a minimum interval of 10 seconds between reboots.

4. Keep the device away from moisture and maintain a clean environment. If there is dust, use a dry, soft cloth to clean it.

5. Avoid direct exposure to strong light and keep the device away from strong magnetic fields.

6. Do not spill liquids such as water or food on the device. Do not pull data or power cables forcefully.

Operating Environment: -10°C to 45°C, 30% to 85% RH

Storage Environment: -20°C to 60°C, 10% to 90% RH

After-Sales Service

Thank you for choosing our mini PC. If you have any questions or need assistance, please contact our support team via the after-sales email or phone number on the device.

FCC Statement

This equipment has been tested and found to comply with the limits for a Class B digital device, pursuant to part 15 of the FCC Rules. These limits are designed to provide reasonable protection against harmful interference in a residential installation. This equipment generates, uses and can radiate radio frequency energy and, if not installed and used in accordance with the instructions, may cause harmful interference to radio communications. However, there is no guarantee that interference will not occur in a particular installation. If this equipment does cause harmful interference to radio or television reception, which can be determined by turning the equipment off and on, the user is encouraged to try to correct the interference by one or more of the following measures:

- Reorient or relocate the receiving antenna.
- Increase the separation between the equipment and receiver.
- Connect the equipment into an outlet on a circuit different from that to which the receiver is connected.
- Consult the dealer or an experienced radio/TV technician for help.

Caution: Any changes or modifications to this device not explicitly approved by manufacturer could void your authority to operate this equipment.

This device complies with part 15 of the FCC Rules. Operation is subject to the following two conditions: (1) This device may not cause harmful interference, and (2) this device must accept any interference received, including interference that may cause undesired operation.

RF Exposure Information

This equipment complies with FCC radiation exposure limits set forth for an uncontrolled environment. This equipment should be installed and operated with minimum distance 20cm between the radiator and your body.

Leaderhub 会参谋®

Mini PC 用户手册

CR2032电池安全警告：

- a) 安全处理：根据当地法规，耗尽的CR2032电池应立即移走、回收或处理，并远离儿童。请勿将电池丢弃在家庭垃圾中或焚烧。
- b) 损伤风险：即时是CR2032电池耗尽，如果处理不当，也会造成严重伤害甚至死亡。
- c) 紧急援助：如果有食物摄入或任何其他紧急情况，请及时致电您当地的医疗控制中心，以了解必要的治疗信息。
- d) 电池类型：本产品仅兼容CR2032型电池。
- e) 电压信息：CR2032电池的标称电压为3V。
- f) 充电器警告：CR2032电池不可充电。
- g) 禁止行为：不强行放电、充电、拆卸、加热超过制造商指定的最高温度(通常为60°C)，或焚烧。操作不当可能导致电池排气、泄露或爆炸，导致人身伤害和化学烧伤。

电池声明：

本产品包含一个不可复制的CR2032按钮电池。
根据当地法规，我们提醒客户注意以下事项：

本产品内部的CR2032电池应由专业人员拆卸，并在其使用寿命结束时重新循环或妥善处理。

请确保蓄电池远离儿童和宠物接触，以防止意外进食。

请勿将电池连同生活垃圾一起处理或焚烧。

我们致力于环境保护和消费者安全。

感谢您的理解与合作。

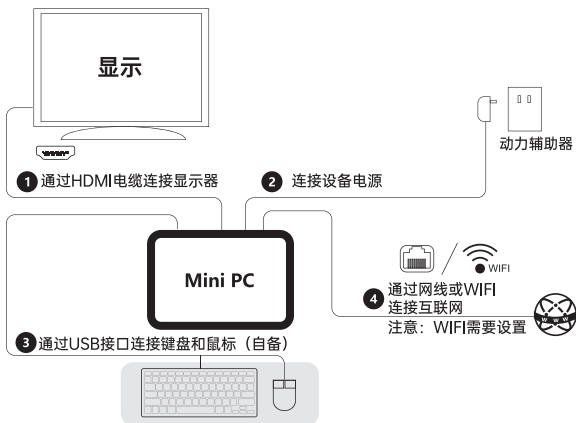
用户指南

亲爱的用户：感谢您使用我们的产品。为了您的安全利益，请在使用本产品前仔细阅读本手册和所有相关资料！

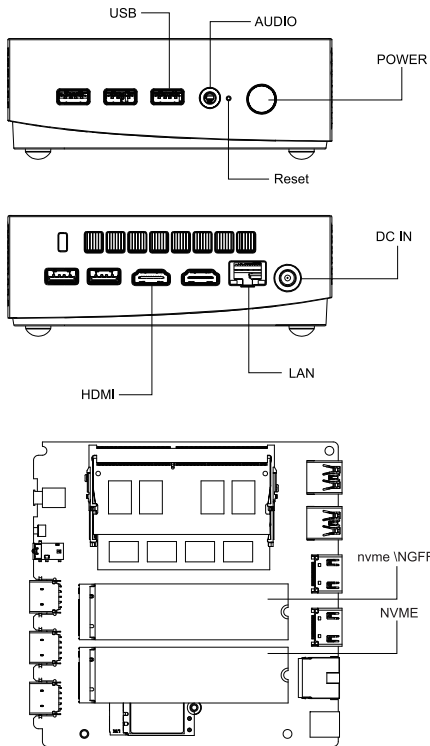
免责声明：

- 1.请务必使用原始的电源适配器。对于因使用第三方适配器而引起的任何问题或故障，我们不承担任何责任。
- 2.用户可以使用第三方音乐、视频、图像和软件，但我们不对任何版权问题或软件故障负责。
- 3.如果产品出现故障，我们将严格遵守保修条款。然而，我们不对在使用过程中可能产生的任何财产损失或经济损失负责。
- 4.该设备附带预装软件，可在实际测试后使用。但是，在出现兼容性或其他问题的情况下，删除或不能删除此类软件都不会影响机器。请注意，这不是一个产品质量的问题。
- 5.我们保留改进产品的权利。如果规格或设计有任何变化，实际产品将全部失效。
- 6.请不要自行拆卸产品。对于与产品质量无关的外部物理或化学损害所造成的损害，我们不承担任何责任。

快速安装：



产品界面示意图



更换安装M.2 SSD(注意:如果更换新的SSD盘, 需要重新安装系统)

用螺丝刀沿逆时针方向将预安装的SSD盘从连接器上拆下(如图1所示); 将新M.2 SSD底部的凹口与连接器上的凸起对齐, 然后将M.2 SSD的底部边缘插入连接器(如图2所示), 最后用螺丝刀顺时针穿过螺钉将M.2 SSD固定在支架上(如图3所示)。

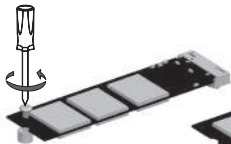


图 1



图 2

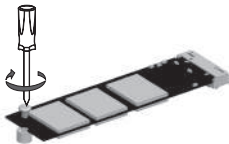
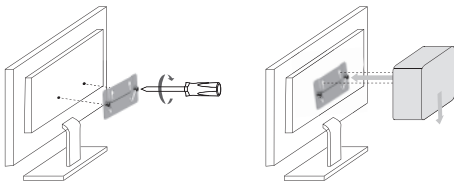


图 3

VESA 支架安装



注意: 有些型号不支持VESA安装, 请参考实际产品

提示和常见问题解答

1. 关掉你的Mini PC

如果您的Mini PC没有响应, 按下电源按钮至少(4-6)秒, 直至您的Mini PC被关闭。

2. 请立即启动到系统中

· 当你第一次启动你的电脑时, 你将被引导去使用你的窗口操作系统。

·第一次启动你的迷你电脑:按下电脑的电源按钮。等待几分钟,直到出现安装界面。

步骤1:选择语言语言(区域)

步骤2:选择输入方式,点击确认

步骤3:选择第二个输入g方法,可以“跳过”


步骤4:联网:使用后,输入密码连接。或选择插入网络电缆以进行连接。(网络将被自动更新,更新过程将在一个界面上停留很长一段时间,从而延长了启动时间。(强烈建议您跳过网络连接)

步骤5:接受许可协议

步骤6:设置用户名和密码。安装过程完成后,将出现桌面。

3.连接WIFI

·Wi-Fi连接。按照以下步骤将PC连接至Wi-Fi网络

·从任务栏中选择图标 

·点击WIFI图标开启WIFI

·在可用的WIFI连接列表中选择一个接入点,选择其中一个连接来启动网络连接

注意:系统可能会提示您输入安全密钥以激活WIFI连接。

4.进入BIOS设置界面

·BIOS(Basic输入/输出)是Mini PC启动时加载的第一个软件

·进入BIOS:按“Del”或“Esc”键

·在正常情况下,大多数情况下采用默认BIOS设置,以确保最佳性能。请勿更改BIOS默认设置,除了以下情况。(您已经安装了需要进一步BIOS设置或更新的新系统组件)

·警告! BIOS设置不当可能导致系统不稳定或启动失败,强烈建议在技术服务人员的帮助下修改BIOS设置。

预防措施

1.在执行可能导致损坏或损失的操作时要小心。

2.在使用期间,请确保该设备没有感染病毒,并尝试使用防病毒软件。如果迷你电脑长时间不使用,关闭并断开电源。

3.避免在短时间内频繁地开关设备。确保重新启动之间最短间隔10秒。

4.使设备远离湿气,并保持一个清洁的环境。如果有灰尘,用干燥的软布清洁。

5.避免直接暴露在强光下,并使设备远离强磁性。

6.不要将水或食物等液体洒在设备上。请勿强制拔拉数据或电力电缆。操作设备:-10°C至45°C, 30%至85%6

存储环境:-20°C至60°C, 10%至90%RH

售后服务

感谢您选择我们的Mini PC。如果您有任何问题或需要帮助,请通过设备上的售后电子邮件或电话号码联系我们的支持团队。

Leaderhub 会参谋

实效开会就用会参谋