

NINJA®

OWNER'S GUIDE

BL488ANZ



Welcome to the Nutri Ninja® with Auto-iQ™ Pro Complete all-purpose, customisable, everyday kitchen assistant. The Nutri Ninja with Auto-iQ Pro Complete features pre-programmed settings that take the guesswork out of drink and meal making. These programs are timed to deliver consistent, delicious results that finish on their own so all you have to do is press a button and enjoy.

If you should have a question about your Nutri Ninja with Auto-iQ Pro Complete, please call AU: 1800 890 840 or NZ: 0800 002 999.

THANK YOU!

REGISTER YOUR PURCHASE:

☎ AU: 01800 890 840

☎ NZ: 0800 002 999

RECORD THIS INFORMATION:

Model Number: _____

Date of Purchase (Keep receipt): _____

THIS BOOK COVERS MODEL NUMBER:

BL488ANZ 30

TECHNICAL SPECIFICATIONS:

Voltage: 220-240V~, 50/60Hz

Power: 1100W

Ninja® Jar Capacity: 1.4 L

Nutri Ninja® Cup Capacity: 650ml

Ninja® Double Wall Stainless

Steel Cup Capacity: 650ml



GMA-102233-EA-014

IMPORTANT SAFETY INSTRUCTIONS

Read all instructions before using your Ninja® product. When using an electrical appliance, basic safety precautions should always be observed, including the following:

IMPORTANT: This appliance is not intended for use by persons with reduced physical, sensory or mental capabilities, or lack of experience and knowledge, unless they have been given supervision or instruction concerning use of the appliance by a person responsible for their safety.

Children shall not use or play with this appliance. Close supervision is necessary to keep appliance and cord out of reach of children during use.

⚠ WARNING

TO REDUCE THE RISK OF FIRE, ELECTRIC SHOCK OR INJURY:

- 1 ⚠ **WARNING: Remove utensils prior to processing. Failure to remove may cause the jar to be damaged or to shatter which may cause personal injury.**
- 2 ⚠ **CAUTION: Do not blend hot liquids, doing so may cause excessive pressure build-up, resulting in risk of the user being burned.**
- 3 ⚠ **CAUTION: We do not recommend grinding in any of our Nutri Ninja® cups.**
- 4 ⚠ **CAUTION: Remove the Pro Extractor Blades™ Assembly from the Nutri Ninja cup or Nutri Ninja XL Multi-Serve Jar upon completion of blending. Do not store ingredients before or after blending them in the cup or jar with the blade assembly attached. Some foods may contain active ingredients or release gases that will expand if left in a sealed container, resulting in excessive pressure buildup that can pose a risk of injury. For ingredient storage in the cup or jar, use Sip & Seal Lid® to cover.**
- 5 ⚠ **WARNING: Extension cords are not recommended for use with this product.**

- 6 ⚠ **CAUTION: In order to avoid a hazard due to inadvertent resetting of the thermal cut-out, this appliance must not be supplied through an external switching device, such as a timer, or connected to a circuit that is regularly switched on and off by the utility.**
- 7 **IMPORTANT: Attachments are not interchangeable.**
- 8 **IMPORTANT: Never run the appliance empty.**
- 9 **IMPORTANT: Make sure that the motor base is plugged in for use.**
- 10 **IMPORTANT: Make sure that the motor base is unplugged when not in use.**
- 11 To protect against electrical shock, do not submerge the appliance or allow the power cord to come into contact with water or any other liquid.
- 12 DO NOT allow the appliance to be used by children. Close attention is necessary when used near children. This is not a toy.
- 13 Never leave the appliance unattended when in use.
- 14 Turn the appliance off and remove the power cord from the electrical outlet when not in use, before assembling or disassembling parts, accessing parts that move while in use, and before cleaning. To unplug, grasp the plug and pull from the electrical outlet. Never pull from the power cord.
- 15 DO NOT abuse the power cord. Never carry the appliance by the power cord or yank it to disconnect from the electrical outlet; to unplug, grasp the plug, not the cord.
- 16 DO NOT use with damaged cord or plug.
- 17 DO NOT USE if the appliance is not working, after it has been dropped, dropped into water, damaged, or left outdoors.
- 18 NO SERVICEABLE PARTS. Incorrect re-assembly or repair can cause a risk of electrical shock or injury to persons when the appliance is used.
- 19 DO NOT let the power cord hang over the edge of a table or counter or touch hot surfaces such as the stove.

SAVE THESE INSTRUCTIONS

IMPORTANT SAFETY INSTRUCTIONS

- 20** Always use the appliance on a dry, level surface. Make sure the suction cup feet are wiped clean and no crumbs or residue are on the bottom of them.
- 21** Keep hands, hair, clothing, and utensils out of container while processing to reduce the risk of severe injury to persons or damage to the appliance. A scraper may be used **ONLY** when the appliance is not running.
- 22** Avoid contact with moving parts.
- 23** DO NOT attempt to sharpen blade assemblies.
- 24** DO NOT use the appliance if the blade assembly is bent or damaged.
- 25** To reduce risk of injury, never place the blade assembly on the motor base without the proper container.
- 26** DO NOT operate this appliance on or near any hot surfaces (such as on a gas or electric burner or in a heated oven).
- 27** The use of attachments or accessories (including canning jars), that are not recommended or sold by the manufacturer may cause fire, electric shock, or personal injury.
- 28** DO NOT remove the container from the motor base while the appliance is running.
- 29** To reduce the risk of injury, NEVER operate the appliance without the blade assembly installed in a container. DO NOT try to defeat the interlock mechanism; make sure the blade assembly is properly installed before operating the appliance.
- 30** DO NOT expose containers to extreme temperature changes.
- 31** DO NOT overfill. Do not exceed "MAX" fill line.
- 32** Max ON time is 60 seconds under 1100W load. If the appliance overheats, a thermal switch will become activated and shut off the motor. To reset, unplug the appliance and let it cool down for approximately 30 minutes before using again.
- 33** To reduce the risk of burns, always allow the appliance to cool before taking off parts and before cleaning.
- 34** To avoid injury, never attempt to place the Pro Extractor Blades™ Assembly onto the motor base without first assembling the blade assembly to the Nutri Ninja® Cup.
- 35** THIS PRODUCT IS INTENDED FOR HOUSEHOLD USE ONLY. Do not use this appliance for anything other than its intended use. Do not use outdoors.
- 36** Appliance accessories are NOT intended to be used in the microwave. DO NOT place the containers (cups, processor bowls, lids, etc.) in the microwave as it may result in damage to the accessories.
- 37** The maximum power rating is based on the chopping blade (processor bowl) that drives the greatest power; other recommended attachments may draw significantly less power or current.

SAVE THESE INSTRUCTIONS

Nutri Ninja® Cups

Double Wall Stainless Steel Ninja® Cup

Nutri Ninja XL Multi-Serve Jar



650 ml



650 ml



1.4 L

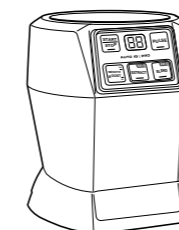
Sip & Seal™ Lid

Pro Extractor Blades™ Assembly

NOTE: Sip & Seal lid and Pro Extractor Blades Assembly can be used with all Ninja Cups.



Motor Base



ACCESSORIES

Select accessories are included. Others are available for purchase.

FEATURES:

- Nutrient & Vitamin Extraction*
- 1100 Watt Motor
- User Interface:

START/STOP

START/STOP is a manual setting that runs at High speed for 60 seconds. This button can be pressed at any time if you wish to stop a program.

SMOOTH BOOST™

SMOOTH BOOST YES/NO is a special feature available when using the Auto-iQ™ EXTRACT and Auto-iQ BLEND. This setting can be used to control the consistency of your beverage recipes. Select SMOOTH BOOST YES when smoother, creamier results are desired. This is the default program for both Auto-iQ EXTRACT and Auto-iQ BLEND programs. Select SMOOTH BOOST NO when more of a textured consistency is desired.

PULSE

Offers greater control to help prevent over-processing or over-blending. Simply hold down the button and our blades will run at a high speed for a quick burst of power to break through ice or chop vegetables.

AUTO-iQ EXTRACT™

EXTRACT should be used when blending hard, leafy, or fibrous whole fruits and vegetables, including apples, kale, and celery. This optimized program allows you to blend fresh items with their skins, seeds, and stems into nutrient extractions. Before using EXTRACT, select SMOOTH BOOST YES or NO depending on your desired consistency.

AUTO-iQ BLEND

BLEND can be used to make a range of beverages that do not include hard or fibrous fresh ingredients, such as milkshakes, protein smoothies, soft fresh-fruit smoothies, and frozen cocktails. Before using BLEND, select SMOOTH BOOST YES or NO depending on your desired consistency.

- Sip & Seal™ lids for drinks on the go.
 - Nutri Ninja® Cups and Sip & Seal lids, BPA Free, and dishwasher safe.
- NOTE: The Stainless Steel Ninja® Cup is NOT dishwasher safe.
- Cord Wrap located on back of the motor base.

Ice to Snow

Crushing Ice to Snow is easy – take ice cubes directly from your freezer, and put in a dry Ninja® Cup – use the pulse feature in short quick bursts until it's a snow like consistency.

*Extract a nutritious drink containing vitamins and nutrients from fruits and vegetables.

ASSEMBLY AND USE FOR THE NUTRI NINJA® CUP OR JAR

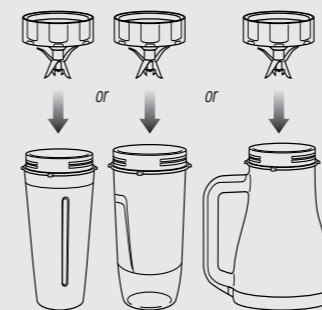


fig. 1

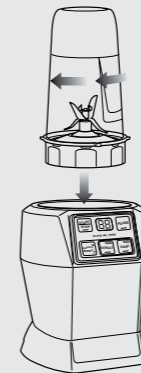


fig. 2



fig. 3

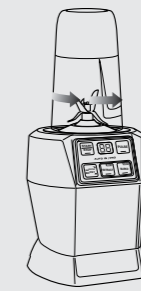


fig. 4

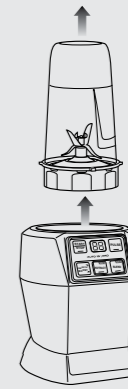


fig. 5

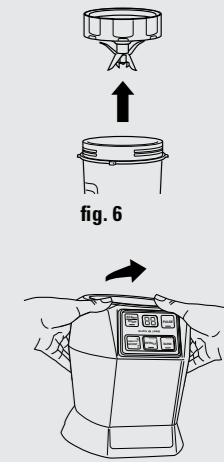


fig. 6

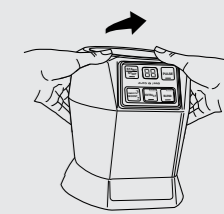


fig. 7

ASSEMBLY

USE

REMOVAL

For best results, follow the recipe/ingredient loading instructions found in your Inspiration Guide.

⚠ WARNING: Handle the Pro Extractor Blades™ Assembly with care, as the blades are sharp.

⚠ WARNING: Remove utensils prior to processing. Failure to remove may cause the Nutri Ninja cup to be damaged or to shatter, which may cause personal injury.

⚠ WARNING: Never leave the appliance unattended while in use.

⚠ CAUTION: Do not blend hot liquids, doing so may cause excessive pressure buildup, resulting in risk of the user being burned.

⚠ CAUTION: Remove the Pro Extractor Blades™ Assembly from the Nutri Ninja cup or Nutri Ninja XL Multi-Serve Jar upon completion of blending. Do not store ingredients before or after blending them in the cup or jar with the blade assembly attached. Some foods may contain active ingredients or release gases that will expand if left in a sealed container, resulting in excessive pressure buildup that can pose a risk of injury. For ingredient storage in the cup or jar, use Sip & Seal Lid® to cover.

NOTE: Ninja® Auto-iQ™ Technology can sense which jar is on the motor base. The function lights will illuminate depending on which container is placed on the motor base.

IMPORTANT: When processing soft dry ingredients such as day-old bread or cheese use quick, short 1 second pulses. Do not overfill to avoid overheating the appliance. Allow the appliance to cool after each use.

- 1 Review warning and caution statements above before proceeding to number 2.
- 2 Place the motor base on a clean, dry, level surface such as a counter or tabletop. Press down on the motor base to make sure that the suction cups adhere to the counter or tabletop.
- 3 Add ingredients to the Nutri Ninja cup.
NOTE: Do not overfill! To avoid spilling, do not add ingredients past the "MAX" fill line.
- 4 Place the Pro Extractor Blades Assembly onto the cup and tightly screw it on clockwise until you have a good seal. (Fig. 1)
- 5 Turn the Nutri Ninja cup upside down and place it onto the motor base, aligning the tabs on the

cup with the motor base. Rotate the Nutri Ninja cup clockwise until it locks in place, you will hear a click when the lock is engaged. (Fig. 2)

- 6 Once the cup is engaged, the programs available for that attachment will illuminate. Select the program desired based on your recipe. (Fig. 3)
- 7 To pause the appliance, press the selected speed or Auto-iQ program a second time. When the program is paused, the light on the program button will flash until you press it again to resume the rest of the program.
- 8 Once you have reached your desired consistency, press the **START/STOP** button to turn the program off. Turn the Nutri Ninja cup anticlockwise (Fig. 4) and pull straight up to remove. (Fig. 5)
- 9 Turn the cup upright and remove the Pro Extractor Blades Assembly by twisting the Pro Extractor Blades Assembly anticlockwise.

10 Do not store blended contents in the Nutri Ninja cup or Nutri Ninja XL Multi-Serve Jar with the Pro Extractor Blades Assembly attached. (Fig. 6)

11 Place the Sip & Seal™ lid onto the Nutri Ninja® cup, twist to seal and enjoy!

NOTE: Sip & Seal lid not intended for use with the Nutri Ninja XL Multi-Serve Jar.

12 For storage in the cup, use Sip & Seal lid to cover.

13 Make sure that the motor base is unplugged when not in use.

14 To remove the motor base unit, tip the unit forward from the rear to easily disengage the suction cups. (Fig. 7)

15 Be sure to store the Pro Extractor Blades Assembly attached to an empty cup when not in use.

CARE &
MAINTENANCE

CLEANING:

⚠ CAUTION: Make sure that the motor base is unplugged from the power source before inserting or removing any attachment and before cleaning.

⚠ CAUTION: DO NOT immerse the motor base into water or any other liquid.

- 1 Separate/remove all parts from each other.
- 2 Hand Washing: Wash the containers, lids, blade assemblies and attachments in warm, soapy water. When washing the blade assemblies, use a dish-washing utensil with a handle to avoid direct hand contact with blades. Handle blade assemblies with care to avoid contact with sharp edges. Rinse and air dry thoroughly.

Dishwasher: The containers, lids, blade assemblies and attachments are all dishwasher safe. The lids and blade assemblies are top rack dishwasher safe. Ensure that the Blade Assemblies are removed from the containers before placing in the dishwasher.

⚠ WARNING: Handle the Blade Assemblies with care when washing, as the blades are sharp. Contact with the blades' edges can result in laceration.

- 3 Wipe the motor base clean with a damp cloth.

NOTE: If the appliance needs servicing, please call Customer care at: AUST: 1800 890 840 or NZ: 0800 002 999.

STORING:

- 1 Store the Nutri Ninja with Auto-iQ™ Pro Complete upright with the blade assembly inside the corresponding container with the lid secured on top. Do not place anything on top. Store the rest of the attachments in a safe place where they will not be damaged and won't cause harm. Secure the power cord on the back of the base by wrapping the cord around the cord wrap.

NOTE: Do not store blended or unblended ingredients in the Nutri Ninja cup or Nutri Ninja XL Multi-Serve Jar with the blade assembly attached.

RESETTING THE MOTOR
THERMOSTAT:

The Nutri Ninja with Auto-iQ Pro Complete features a safety system that prevents damage to the unit's motor and drive system should you inadvertently overload the appliance. If the appliance is overloaded, the motor will stop. To reset the appliance, follow the resetting procedure below:

- 1 Unplug the appliance from the electrical outlet.
- 2 Remove and empty the cup and ensure that no food is jamming the cutting blades.
- 3 Allow the appliance to cool for approximately 30 minutes.
- 4 Re-install the cup onto the motor base and re-plug the appliance into the electrical outlet.
- 5 Proceed with using the appliance as before while making sure not to exceed the maximum recommended capacities.

TROUBLE-
SHOOTING
GUIDE

Unit doesn't turn on:

- Make sure the unit is plugged in and the **START/STOP** button is pressed.
- Insert and rotate cup clockwise in the base until it clicks into place. When the unit is plugged in and no jar installed, "--" is displayed on the timer.

Unit doesn't turn off:

- Remove cup from base by rotating cup anticlockwise and lifting out. Display should turn off. Unplug the power cord from the outlet.

Lid/blade assembly hard to assemble:

- Set the cup on a level surface. Place the lid or blade assembly on the top of the cup and align the threads so that the lid/blades sit flat on the cup. Twist clockwise so that the lid/blades evenly align to the cup until you have a tight seal.

Doesn't mix well, food gets stuck:

- Using the Auto-iQ programs is the easiest way to achieve great results. The pulses and pauses allow the food to settle towards the blade. If food is routinely getting stuck adding some liquid will usually help.
- When packing the cups, start with fresh items, then add liquids, powders/dry ingredients, and finally frozen items or ice.

Unit moves on the counter while blending:

- Make sure the surface as well as the feet of the unit are clean and dry.

Unit is difficult to remove from the counter for storage:

- To remove the motor base unit, tip the unit forward from the rear to easily disengage the suction cups.

NINJA®



**Exclusively Distributed
Throughout Australasia by:**

Brand Developers Aust Pty Ltd

Unit 3, 2 Roussos Place,
Truganina, VIC 3029, AUSTRALIA
AUST Customer Care: 1800 890 840

Brand Developers Limited

Unit H, 686 Rosebank Road,
Avondale, 1026 Auckland, NEW ZEALAND
NZ Customer Care: 0800 002 999



GMA-102233-EA-014

BL488ANZ_30_160630_1

© 2016 SharkNinja Operating LLC

Illustrations may differ from actual product. We are constantly striving to improve our products, therefore the specifications contained herein are subject to change without notice.

Printed in China

Ninja and Nutri-Ninja are registered trademarks of SharkNinja Operating LLC.

Auto-iQ, Pro Extractor Blades and Sip & Seal are trademarks of SharkNinja Operating LLC.

