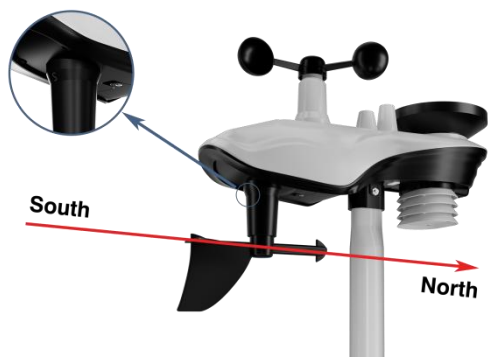


Sainlogic-SA9

Quick Setup Guide



Step 1:

Locate the battery door on the bottom of the transmitter, remove the retaining screws on the back of the sensor, remove the battery door, insert 3 new AA batteries and close the battery door.



Step 3:

1. Plug in the display console with the power adapter.2.

Remove the battery door on the back of the display and install three AAA (alkaline or lithium)batteries.



If outdoor data is still not displayed, press and hold the CHANNEL/+key for three seconds until a dash is displayed.

Product Includes:

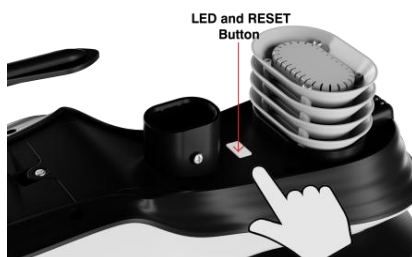
- Integrated outdoor transmitter
- Display Console
- Rain collector
- Wind Cups
- Wind Vane
- Mounting brackets and accessories
- Instruction manual
- Power Adapter

Recommended Tools:

- Precision screwdriver (for small Phillips screws)
- Compass or GPS (for wind direction calibration)
- Adjustable wrench

Step 2:

After installing the batteries, the Integrated Outdoor Sensor LED will illuminate for 3 seconds and then blink every 16 seconds. If it does not flash, press the reset button.



Referring to the instructions on the following page.

Learn how to make the display connect to WiFi and how to download the Weatherseed APP and register to log in.



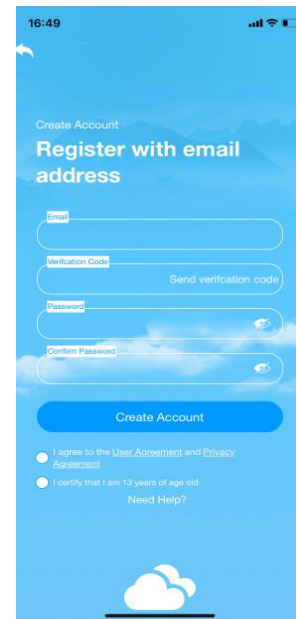
Step 4:

Please search "Weatherseed" APP in Google Play Store or IOS App Store.

Step 5:

Register and login to your own Weatherseed account:


- (1) Fill in the e-mail address;
- (2) Send a verification code to the e-mail address and enter the code;
- (3) Set a password;
- (4) Confirm the password (must be consistent with the set password);
- (5) Check the user agreement and proof of age;
- (6) Register account.




 **Note: The display console only supports 2.4 GHz signals.**

If you have a dual-band router (2.4 GHz and 5.0 GHz), make sure the router's 2.4 GHz band is turned on. And separate it from the SSID of the 5.0 GHz channel for accurate connection to 2.4 GHz.

Step 6: WiFi Connection Steps

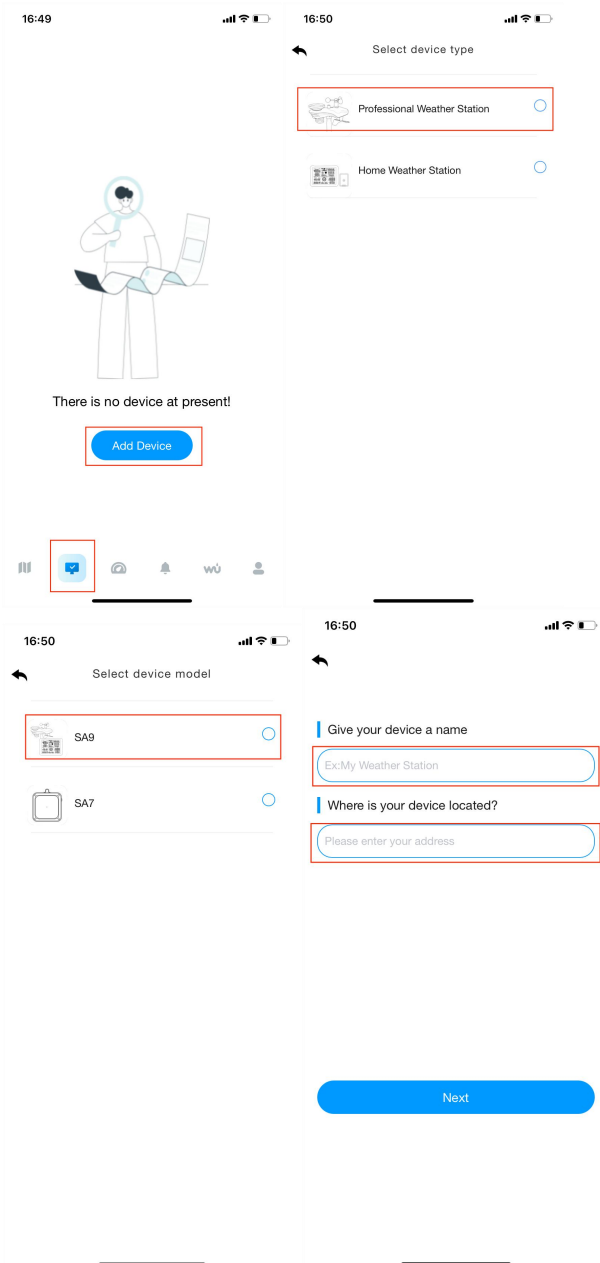
 **Note: Please don't choose the wrong type and model, if you choose the wrong one, you can't match the network successfully.**

1. Bluetooth Distribution Network Mode(Recommend)

Press and hold the MAX/MIN/- key to enter the distribution network mode, the WiFi icon  will flash and the BI icon will be shown in the date area.

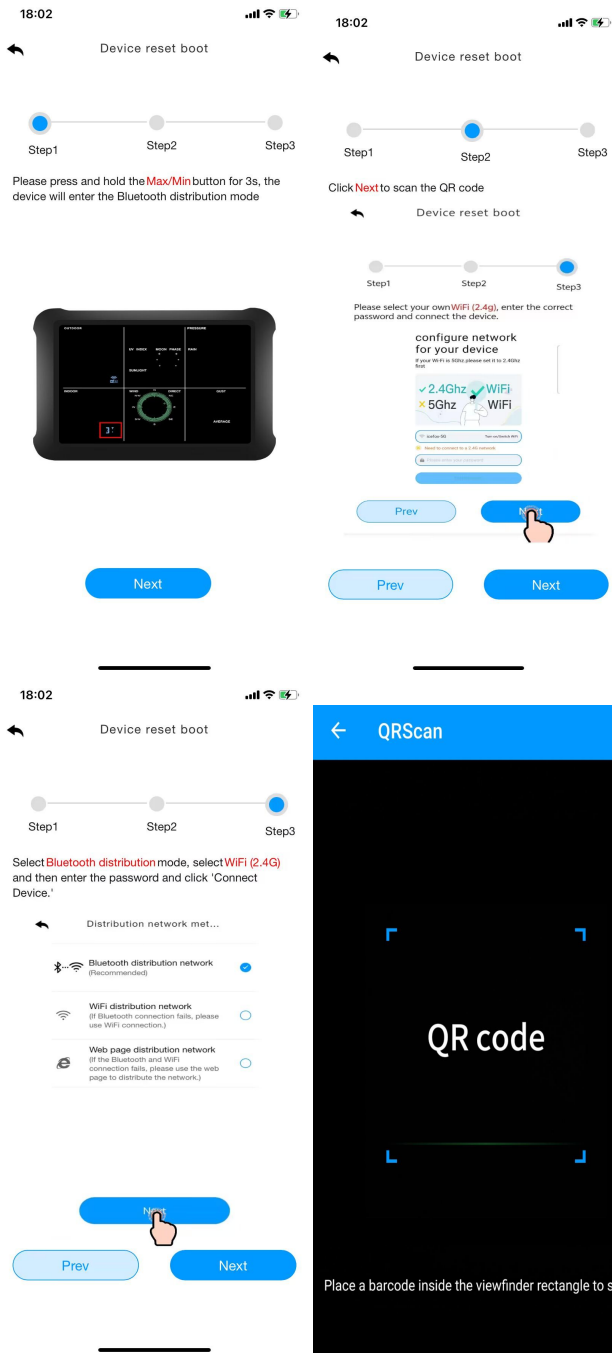
After the display enters the " Bluetooth distribution network " mode, please open the APP to start networking:

- (1) Select product model. Set the name and location by yourself;



(2) Follow steps 1 through 3 for WiFi connectivity, scan the QR code and then select the distribution method.

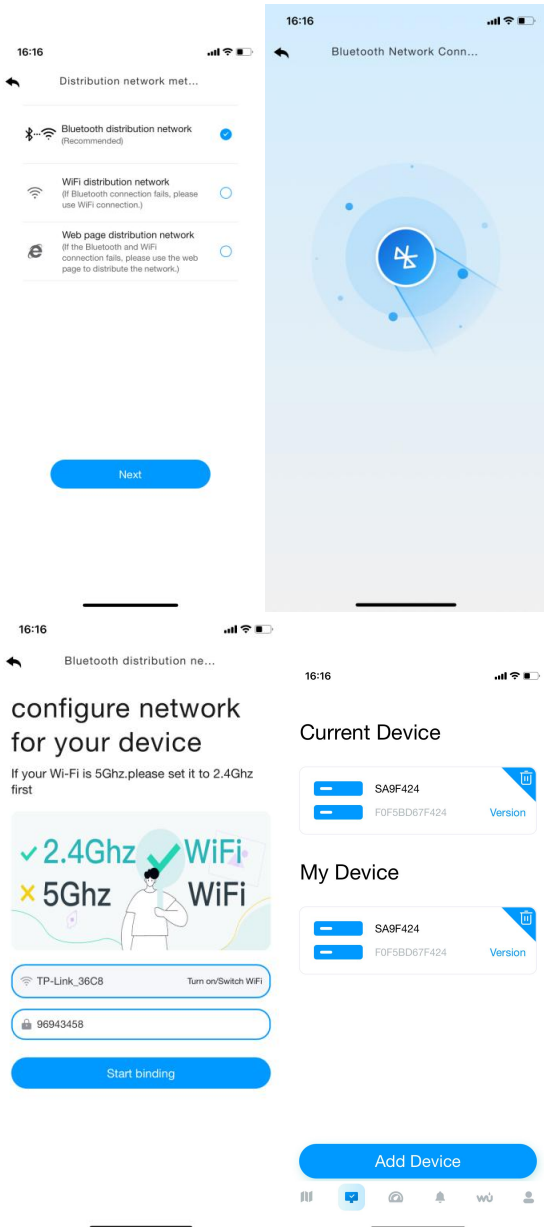






 **Note:** The QR code is attached to the back of the display.

(3) Select the "Bluetooth distribution network" to automatically search for Bluetooth signals and pairing. After successful pairing, jump to WiFi interface. Please select 2.4ghz WiFi and enter the password.



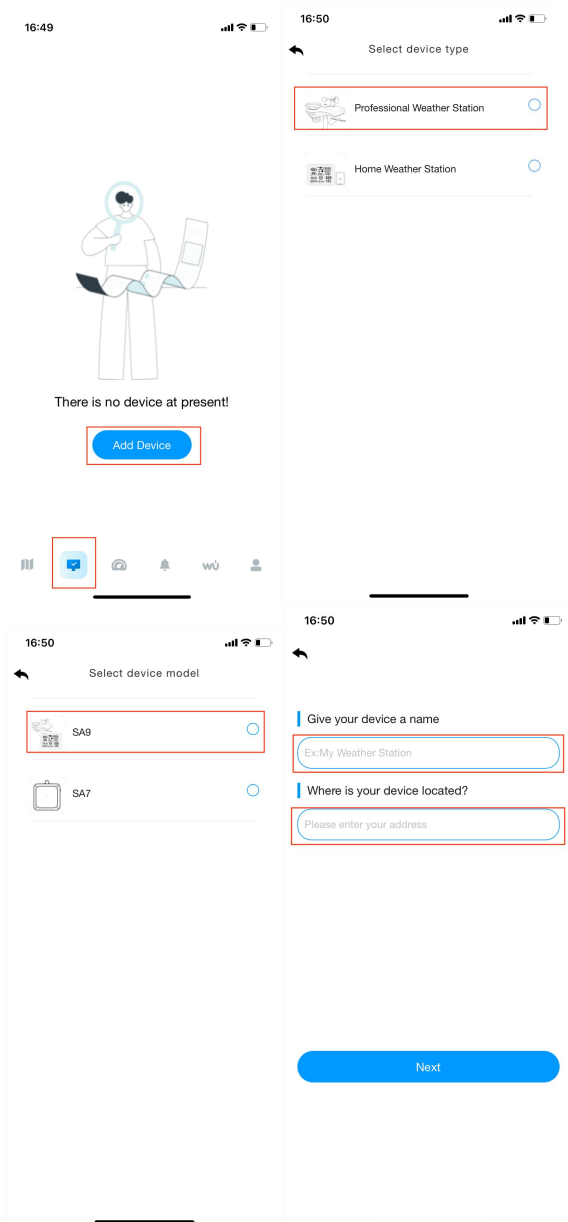


2. WiFi Distribution Network Mode

Press and hold the MAX/MIN/- key to enter the distribution network mode, the WiFi icon  will flash, then short press the SET key once, and the SC icon  will be shown in the date area.

After the display enters the "WiFi distribution network" mode, please open the APP to start networking:

(1) Select product model. Set the name and location by yourself;



(2) Follow steps 1 through 3 for WiFi connectivity, scan the QR code and then select the distribution method.



18:02 Device reset boot



Please press and hold the **Max/Min** button for 3s, the device will enter the Bluetooth distribution mode



Next

18:02 Device reset boot



Click **Next** to scan the QR code

Device reset boot



Please select your own WiFi (2.4g), enter the correct password and connect the device.

configure network for your device

2.4Ghz WiFi

5Ghz WiFi

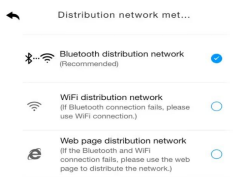
Prev Next

Prev Next

18:02 Device reset boot

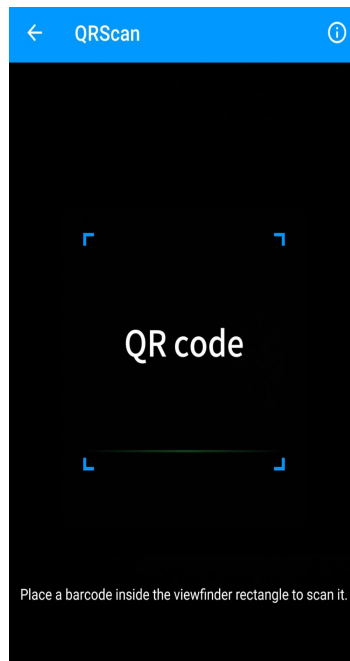


Select **Bluetooth distribution mode**, select **WiFi (2.4G)** and then enter the password and click 'Connect Device.'



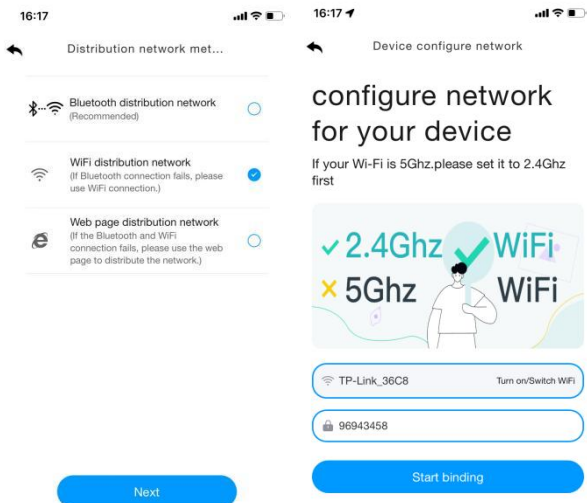
Next

Prev Next



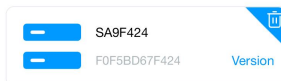
(3) Choose the “ Wifi distribution network “ mode, select the router WiFi name (2.4g), then enter the password and click next.



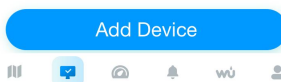
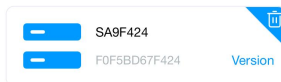


16:16



Current Device



My Device

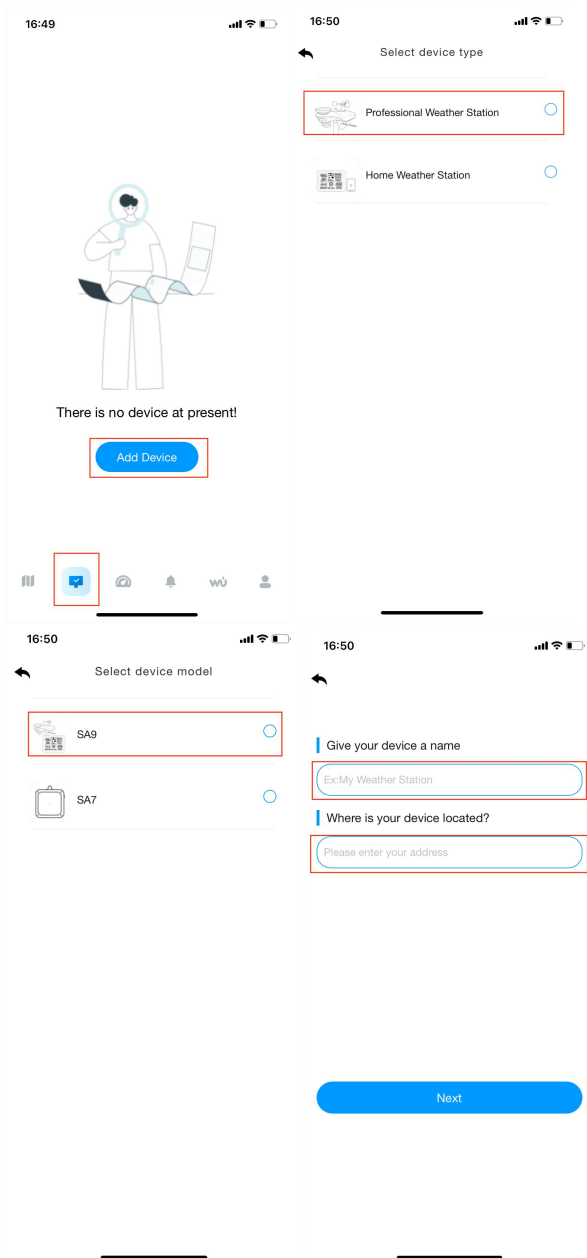


3. Web page distribution network mode

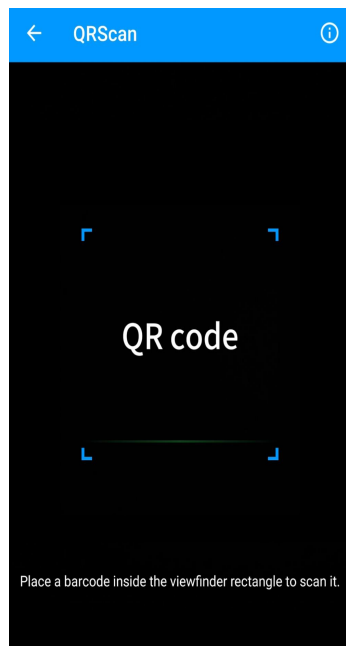
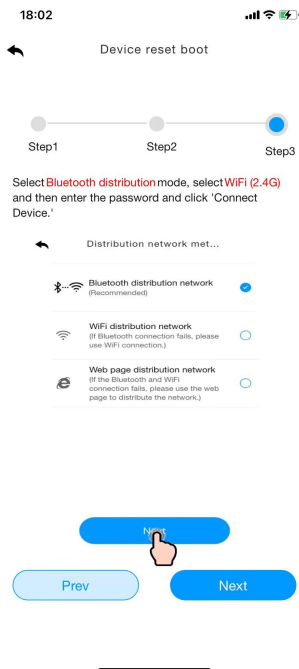
Press and hold the MAX/MIN/- key to enter the distribution network mode, the WiFi icon  will flash, then press the SET key briefly twice, the SC icon will be converted to WC icon .

After the display enters the " Web page distribution network" mode, please follow steps to connect the WiFi:

(1) Select product model. Set the name and location by yourself;

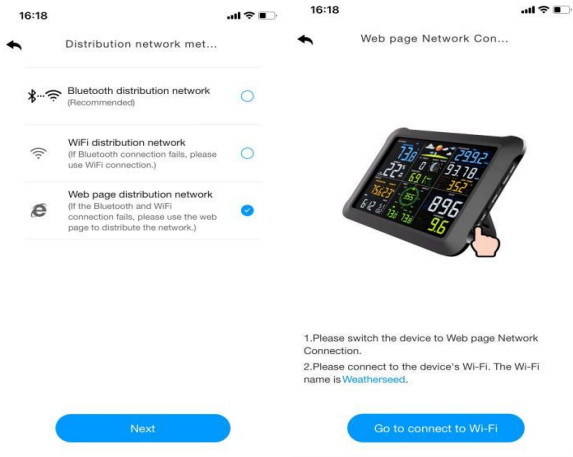


(2) Follow steps 1 through 3 for WiFi connectivity, scan the QR code and then select the distribution method.

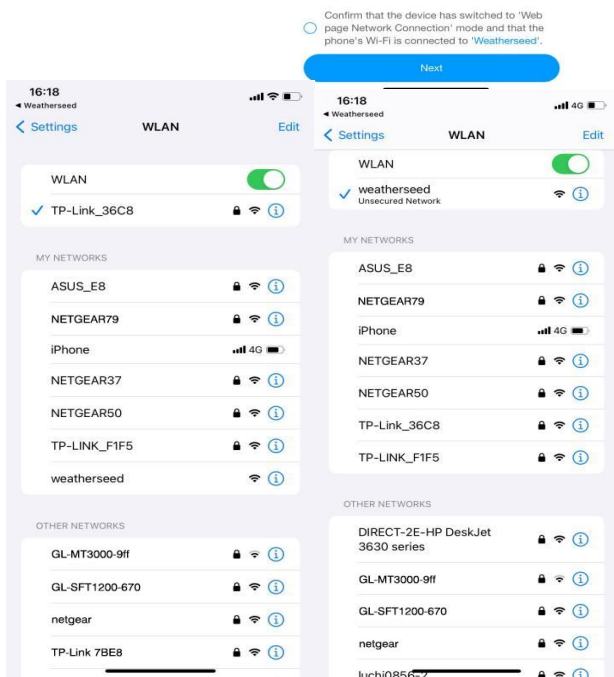


(3) Choose the " Web page distribution network" mode. Click Go to connect to WiFi. Automatically jump to the WiFi list screen, click Connect " weatherseed " WiFi.

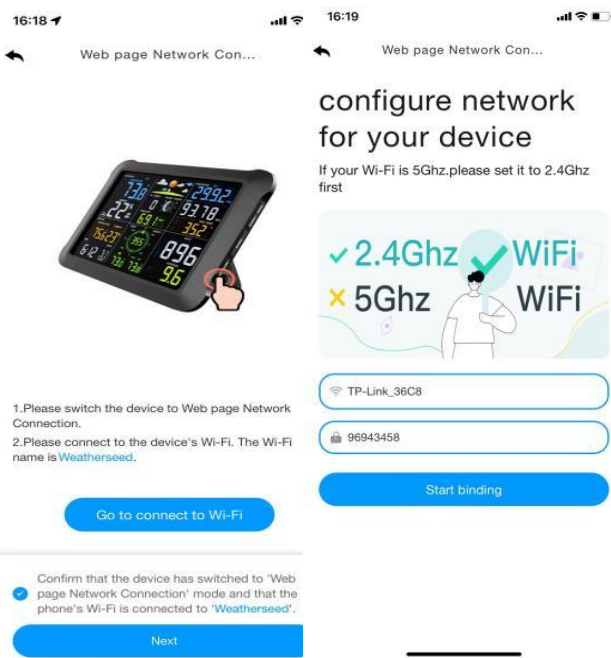




1. Please switch the device to Web page Network Connection.
 2. Please connect to the device's Wi-Fi. The Wi-Fi name is Weatherseed.




(4) Return to the app, click the confirmation dot and click " Next". Please select 2.4ghz WiFi, enter the password and click " Connect".



1. Please switch the device to Web page Network Connection.
 2. Please connect to the device's Wi-Fi. The Wi-Fi name is Weatherseed.





 **Note: Android system can select WiFi. IOS system needs to manually enter the WiFi name.**

If you have any questions, please feel free to contact us. You can reach us via Customer Support Email, Customer Support phone, or social media accounts.

Customer Support Email : info@sainlogic.com

Website: www.sainlogic.com

Customer Support Phone: +1 508 758 0493 (Mon-Sat 10 a.m. - 2 p.m, Eastern Standard Time)

YouTube:

<https://www.youtube.com/@sainlogicbrand>

Facebook:

<https://www.facebook.com/sainlogicofficial>

Instagram:

https://www.instagram.com/sainlogic_official/

Twitter:

<https://twitter.com/sainlogicbrand>

TikTok:

<https://www.tiktok.com/@sainlogic>